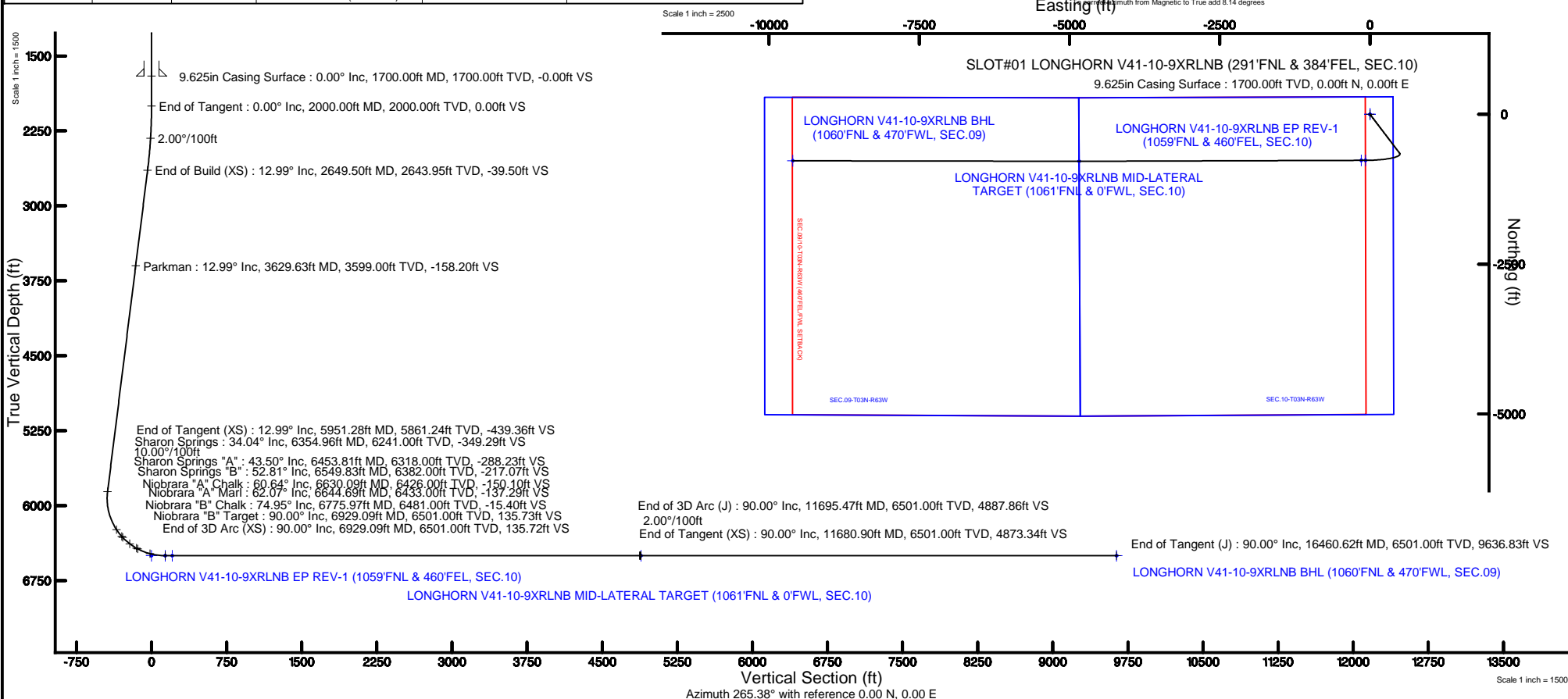


Location:	COLORADO	Slot:	SLOT#01 LONGHORN V41-10-9XRLNB (291'FNL & 384'FEL, SEC.10)
Field:	WELD COUNTY	Well:	LONGHORN V41-10-9XRLNB
Facility:	SEC.10-T03N-R63W	Wellbore:	LONGHORN V41-10-9XRLNB PWB

Plot reference wellpath is LONGHORN V41-10-9XRLNB PWP (REV-A.0)	Grid System: NAD83 / Lambert Colorado SP, Northern Zone (501), US feet
True vertical depths are referenced to RIG (17KB) (RKB)	* = Wellpath was transformed from a different geodetic datum
Measured depths are referenced to RIG (17KB) (RKB)	North Reference: True north
RIG (17KB) (RKB) to Mean Sea Level: 4806 feet	Scale: True distance
Mean Sea Level to Ground level (At Slot: SLOT901 LONGHORN V41-10-9XRLNB (291FNL & 394FEC, SEC.10): 0 feet	Depths are in feet
Coordinates are in feet referenced to Slot	Created by: ingnjamr on 2017-10-17
	Database: WA_DEN_Denver_Defn

Facility Name			Grid East (US It)	Grid North (US It)	Latitude	Longitude
SEC. 10-T03N-R63W			3302568.859	1334491.005	40°14'47.400"N	104°24'57.760"W
Slot	Local N (ft)	Local E (ft)	Grid East (US It)	Grid North (US It)	Latitude	Longitude
SLOT#01 LONGHORN V41-10-0XRLNB (291FNL & 384FEL, SEC.10)	0.00	0.00	3302568.859	1334491.005	40°14'47.400"N	104°24'57.760"W
RIG (17KRB) (RKB) to Ground level (At Slot: SLOT#01 LONGHORN V41-10-0XRLNB (291FNL & 384FEL, SEC.10))					4800ft	
Mean Sea Level to Ground level (At Slot: SLOT#01 LONGHORN V41-10-0XRLNB (291FNL & 384FEL, SEC.10))					0ft	
RIG (17KRB) (RKB) to Mean Sea Level					4800ft	

Start MD (ft)	End MD (ft)	Tool	Model	Log Name/Comment	Wellbore
17.00	16460.62	BHI NaviTrak	BHI NaviTrak (Standard)		LONGHORN V41-10-9XRLNB PWB





Planned Wellpath Report

LONGHORN V41-10-9XRLNB PWP (REV-A.0)
Page 1 of 10



REFERENCE WELLPATH IDENTIFICATION			
Operator	BONANZA CREEK OIL COMPANY	Slot	SLOT#01 LONGHORN V41-10-9XRLNB (291'FNL & 384'FEL, SEC.10)
Area	COLORADO	Well	LONGHORN V41-10-9XRLNB
Field	WELD COUNTY	Wellbore	LONGHORN V41-10-9XRLNB PWB
Facility	SEC.10-T03N-R63W		

REPORT SETUP INFORMATION			
Projection System	NAD83 / Lambert Colorado SP, Northern Zone (501), US feet	Software System	WellArchitect® 5.0
North Reference	True	User	Ingmjmr
Scale	0.999957	Report Generated	10/17/2017 at 11:30:42 AM
Convergence at slot	0.71° East	Database/Source file	WA_DEN_Denver_Defn/LONGHORN_V41-10-9XRLNB_PWP__REV-A.0_.xml

WELLPATH LOCATION						
	Local coordinates		Grid coordinates		Geographic coordinates	
	North[ft]	East[ft]	Easting[US ft]	Northing[US ft]	Latitude	Longitude
Slot Location	0.00	0.00	3302568.86	1334491.01	40°14'47.400"N	104°24'57.760"W
Facility Reference Pt			3302568.86	1334491.01	40°14'47.400"N	104°24'57.760"W
Field Reference Pt			3224525.77	1254425.87	40°01'44.400"N	104°41'53.556"W

WELLPATH DATUM			
Calculation method	Minimum curvature	RIG (17'KB) (RKB) to Facility Vertical Datum	4806.00ft
Horizontal Reference Pt	Slot	RIG (17'KB) (RKB) to Mean Sea Level	4806.00ft
Vertical Reference Pt	RIG (17'KB) (RKB)	RIG (17'KB) (RKB) to Ground Level at Slot (SLOT#01 LONGHORN V41-10-9XRLNB (291'FNL & 384'FEL, SEC.10))	4806.00ft
MD Reference Pt	RIG (17'KB) (RKB)	Section Origin	N 0.00, E 0.00 ft
Field Vertical Reference	Mean Sea Level	Section Azimuth	265.38°



Planned Wellpath Report

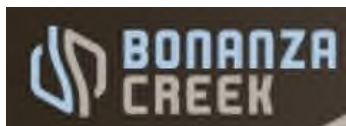
LONGHORN V41-10-9XRLNB PWP (REV-A.0)

Page 2 of 10



REFERENCE WELLPATH IDENTIFICATION			
Operator	BONANZA CREEK OIL COMPANY	Slot	SLOT#01 LONGHORN V41-10-9XRLNB (291'FNL & 384'FEL, SEC.10)
Area	COLORADO	Well	LONGHORN V41-10-9XRLNB
Field	WELD COUNTY	Wellbore	LONGHORN V41-10-9XRLNB PWB
Facility	SEC.10-T03N-R63W		

WELLPATH DATA (181 stations) † = interpolated/extrapolated station										
MD [ft]	Inclination [°]	Azimuth [°]	TVD [ft]	Vert Sect [ft]	North [ft]	East [ft]	Latitude	Longitude	DLS [°/100ft]	Comments
0.00†	0.000	142.779	0.00	0.00	0.00	0.00	40°14'47.400"N	104°24'57.760"W	0.00	
17.00	0.000	142.779	17.00	0.00	0.00	0.00	40°14'47.400"N	104°24'57.760"W	0.00	Tie On
117.00†	0.000	142.779	117.00	0.00	0.00	0.00	40°14'47.400"N	104°24'57.760"W	0.00	
217.00†	0.000	142.779	217.00	0.00	0.00	0.00	40°14'47.400"N	104°24'57.760"W	0.00	
317.00†	0.000	142.779	317.00	0.00	0.00	0.00	40°14'47.400"N	104°24'57.760"W	0.00	
417.00†	0.000	142.779	417.00	0.00	0.00	0.00	40°14'47.400"N	104°24'57.760"W	0.00	
517.00†	0.000	142.779	517.00	0.00	0.00	0.00	40°14'47.400"N	104°24'57.760"W	0.00	
617.00†	0.000	142.779	617.00	0.00	0.00	0.00	40°14'47.400"N	104°24'57.760"W	0.00	
717.00†	0.000	142.779	717.00	0.00	0.00	0.00	40°14'47.400"N	104°24'57.760"W	0.00	
817.00†	0.000	142.779	817.00	0.00	0.00	0.00	40°14'47.400"N	104°24'57.760"W	0.00	
917.00†	0.000	142.779	917.00	0.00	0.00	0.00	40°14'47.400"N	104°24'57.760"W	0.00	
1017.00†	0.000	142.779	1017.00	0.00	0.00	0.00	40°14'47.400"N	104°24'57.760"W	0.00	
1117.00†	0.000	142.779	1117.00	0.00	0.00	0.00	40°14'47.400"N	104°24'57.760"W	0.00	
1217.00†	0.000	142.779	1217.00	0.00	0.00	0.00	40°14'47.400"N	104°24'57.760"W	0.00	
1317.00†	0.000	142.779	1317.00	0.00	0.00	0.00	40°14'47.400"N	104°24'57.760"W	0.00	
1417.00†	0.000	142.779	1417.00	0.00	0.00	0.00	40°14'47.400"N	104°24'57.760"W	0.00	
1517.00†	0.000	142.779	1517.00	0.00	0.00	0.00	40°14'47.400"N	104°24'57.760"W	0.00	
1617.00†	0.000	142.779	1617.00	0.00	0.00	0.00	40°14'47.400"N	104°24'57.760"W	0.00	
1717.00†	0.000	142.779	1717.00	0.00	0.00	0.00	40°14'47.400"N	104°24'57.760"W	0.00	
1817.00†	0.000	142.779	1817.00	0.00	0.00	0.00	40°14'47.400"N	104°24'57.760"W	0.00	
1917.00†	0.000	142.779	1917.00	0.00	0.00	0.00	40°14'47.400"N	104°24'57.760"W	0.00	
2000.00	0.000	142.779	2000.00	0.00	0.00	0.00	40°14'47.400"N	104°24'57.760"W	0.00	End of Tangent
2017.00†	0.340	142.779	2017.00	-0.03	-0.04	0.03	40°14'47.400"N	104°24'57.760"W	2.00	
2117.00†	2.340	142.779	2116.97	-1.29	-1.90	1.44	40°14'47.381"N	104°24'57.741"W	2.00	
2217.00†	4.340	142.779	2216.79	-4.43	-6.54	4.97	40°14'47.335"N	104°24'57.696"W	2.00	
2317.00†	6.340	142.779	2316.35	-9.44	-13.95	10.60	40°14'47.262"N	104°24'57.623"W	2.00	
2417.00†	8.340	142.779	2415.53	-16.32	-24.12	18.33	40°14'47.162"N	104°24'57.524"W	2.00	
2517.00†	10.340	142.779	2514.20	-25.07	-37.05	28.14	40°14'47.034"N	104°24'57.397"W	2.00	
2617.00†	12.340	142.779	2612.24	-35.66	-52.70	40.04	40°14'46.879"N	104°24'57.244"W	2.00	
2649.50	12.990	142.779	2643.95	-39.50	-58.38	44.35	40°14'46.823"N	104°24'57.188"W	2.00	End of Build (XS)



Planned Wellpath Report

LONGHORN V41-10-9XRLNB PWP (REV-A.0)

Page 3 of 10



REFERENCE WELLPATH IDENTIFICATION			
Operator	BONANZA CREEK OIL COMPANY	Slot	SLOT#01 LONGHORN V41-10-9XRLNB (291'FNL & 384'FEL, SEC.10)
Area	COLORADO	Well	LONGHORN V41-10-9XRLNB
Field	WELD COUNTY	Wellbore	LONGHORN V41-10-9XRLNB PWB
Facility	SEC.10-T03N-R63W		

WELLPATH DATA (181 stations) † = interpolated/extrapolated station										
MD [ft]	Inclination [°]	Azimuth [°]	TVD [ft]	Vert Sect [ft]	North [ft]	East [ft]	Latitude	Longitude	DLS [°/100ft]	Comments
2717.00†	12.990	142.779	2709.72	-47.67	-70.46	53.52	40°14'46.704"N	104°24'57.070"W	0.00	
2817.00†	12.990	142.779	2807.16	-59.78	-88.36	67.12	40°14'46.527"N	104°24'56.894"W	0.00	
2917.00†	12.990	142.779	2904.60	-71.89	-106.26	80.72	40°14'46.350"N	104°24'56.719"W	0.00	
3017.00†	12.990	142.779	3002.05	-84.00	-124.16	94.31	40°14'46.173"N	104°24'56.544"W	0.00	
3117.00†	12.990	142.779	3099.49	-96.12	-142.06	107.91	40°14'45.996"N	104°24'56.368"W	0.00	
3217.00†	12.990	142.779	3196.93	-108.23	-159.96	121.51	40°14'45.819"N	104°24'56.193"W	0.00	
3317.00†	12.990	142.779	3294.37	-120.34	-177.86	135.10	40°14'45.642"N	104°24'56.018"W	0.00	
3417.00†	12.990	142.779	3391.81	-132.45	-195.76	148.70	40°14'45.466"N	104°24'55.842"W	0.00	
3517.00†	12.990	142.779	3489.25	-144.56	-213.66	162.30	40°14'45.289"N	104°24'55.667"W	0.00	
3617.00†	12.990	142.779	3586.69	-156.67	-231.56	175.89	40°14'45.112"N	104°24'55.492"W	0.00	
3629.63†	12.990	142.779	3599.00	-158.20	-233.82	177.61	40°14'45.089"N	104°24'55.470"W	0.00	Parkman
3717.00†	12.990	142.779	3684.13	-168.78	-249.46	189.49	40°14'44.935"N	104°24'55.316"W	0.00	
3817.00†	12.990	142.779	3781.57	-180.89	-267.36	203.09	40°14'44.758"N	104°24'55.141"W	0.00	
3917.00†	12.990	142.779	3879.01	-193.00	-285.26	216.68	40°14'44.581"N	104°24'54.966"W	0.00	
4017.00†	12.990	142.779	3976.45	-205.11	-303.16	230.28	40°14'44.404"N	104°24'54.790"W	0.00	
4117.00†	12.990	142.779	4073.90	-217.22	-321.06	243.88	40°14'44.227"N	104°24'54.615"W	0.00	
4217.00†	12.990	142.779	4171.34	-229.33	-338.96	257.48	40°14'44.050"N	104°24'54.440"W	0.00	
4317.00†	12.990	142.779	4268.78	-241.44	-356.86	271.07	40°14'43.874"N	104°24'54.264"W	0.00	
4417.00†	12.990	142.779	4366.22	-253.55	-374.76	284.67	40°14'43.697"N	104°24'54.089"W	0.00	
4517.00†	12.990	142.779	4463.66	-265.66	-392.66	298.27	40°14'43.520"N	104°24'53.914"W	0.00	
4617.00†	12.990	142.779	4561.10	-277.77	-410.56	311.86	40°14'43.343"N	104°24'53.738"W	0.00	
4717.00†	12.990	142.779	4658.54	-289.89	-428.46	325.46	40°14'43.166"N	104°24'53.563"W	0.00	
4817.00†	12.990	142.779	4755.98	-302.00	-446.36	339.06	40°14'42.989"N	104°24'53.388"W	0.00	
4917.00†	12.990	142.779	4853.42	-314.11	-464.26	352.65	40°14'42.812"N	104°24'53.212"W	0.00	
5017.00†	12.990	142.779	4950.86	-326.22	-482.15	366.25	40°14'42.635"N	104°24'53.037"W	0.00	
5117.00†	12.990	142.779	5048.30	-338.33	-500.05	379.85	40°14'42.458"N	104°24'52.862"W	0.00	
5217.00†	12.990	142.779	5145.75	-350.44	-517.95	393.44	40°14'42.282"N	104°24'52.686"W	0.00	
5317.00†	12.990	142.779	5243.19	-362.55	-535.85	407.04	40°14'42.105"N	104°24'52.511"W	0.00	
5417.00†	12.990	142.779	5340.63	-374.66	-553.75	420.64	40°14'41.928"N	104°24'52.336"W	0.00	
5517.00†	12.990	142.779	5438.07	-386.77	-571.65	434.23	40°14'41.751"N	104°24'52.160"W	0.00	



Planned Wellpath Report

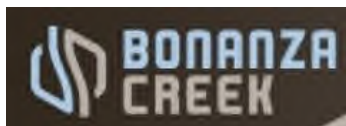
LONGHORN V41-10-9XRLNB PWP (REV-A.0)

Page 4 of 10



REFERENCE WELLPATH IDENTIFICATION			
Operator	BONANZA CREEK OIL COMPANY	Slot	SLOT#01 LONGHORN V41-10-9XRLNB (291'FNL & 384'FEL, SEC.10)
Area	COLORADO	Well	LONGHORN V41-10-9XRLNB
Field	WELD COUNTY	Wellbore	LONGHORN V41-10-9XRLNB PWB
Facility	SEC.10-T03N-R63W		

WELLPATH DATA (181 stations) † = interpolated/extrapolated station										
MD [ft]	Inclination [°]	Azimuth [°]	TVD [ft]	Vert Sect [ft]	North [ft]	East [ft]	Latitude	Longitude	DLS [°/100ft]	Comments
5617.00†	12.990	142.779	5535.51	-398.88	-589.55	447.83	40°14'41.574"N	104°24'51.985"W	0.00	
5717.00†	12.990	142.779	5632.95	-410.99	-607.45	461.43	40°14'41.397"N	104°24'51.810"W	0.00	
5817.00†	12.990	142.779	5730.39	-423.10	-625.35	475.02	40°14'41.220"N	104°24'51.634"W	0.00	
5917.00†	12.990	142.779	5827.83	-435.21	-643.25	488.62	40°14'41.043"N	104°24'51.459"W	0.00	
5951.28	12.990	142.779	5861.24	-439.36	-649.39	493.28	40°14'40.983"N	104°24'51.399"W	0.00	End of Tangent (XS)
6017.00†	10.504	173.167	5925.63	-443.58	-661.23	498.47	40°14'40.866"N	104°24'51.332"W	10.00	
6117.00†	13.613	220.305	6023.64	-435.60	-679.30	491.92	40°14'40.687"N	104°24'51.416"W	10.00	
6217.00†	21.402	241.785	6119.03	-410.51	-696.95	468.17	40°14'40.513"N	104°24'51.723"W	10.00	
6317.00†	30.471	251.570	6208.90	-369.06	-713.63	427.94	40°14'40.348"N	104°24'52.241"W	10.00	
6354.96†	34.041	253.991	6241.00	-349.29	-719.61	408.59	40°14'40.289"N	104°24'52.491"W	10.00	Sharon Springs
6417.00†	39.956	257.112	6290.53	-312.52	-728.85	372.44	40°14'40.198"N	104°24'52.957"W	10.00	
6453.81†	43.497	258.620	6318.00	-288.23	-733.98	348.49	40°14'40.147"N	104°24'53.266"W	10.00	Sharon Springs "A"
6517.00†	49.616	260.799	6361.43	-242.60	-742.13	303.37	40°14'40.066"N	104°24'53.848"W	10.00	
6549.83†	52.809	261.778	6382.00	-217.07	-746.00	278.08	40°14'40.028"N	104°24'54.174"W	10.00	Sharon Springs "B"
6617.00†	59.364	263.549	6419.46	-161.43	-753.08	222.82	40°14'39.958"N	104°24'54.887"W	10.00	
6630.09†	60.644	263.865	6426.00	-150.10	-754.33	211.55	40°14'39.946"N	104°24'55.032"W	10.00	Niobrara "A" Chalk
6644.69†	62.073	264.208	6433.00	-137.29	-755.66	198.81	40°14'39.933"N	104°24'55.196"W	10.00	Niobrara "A" Marl
6717.00†	69.159	265.790	6462.84	-71.47	-761.37	133.24	40°14'39.876"N	104°24'56.042"W	10.00	
6775.97†	74.948	266.972	6481.00	-15.40	-764.90	77.27	40°14'39.841"N	104°24'56.764"W	10.00	Niobrara "B" Chalk
6817.00†	78.979	267.755	6490.25	24.53	-766.73	37.36	40°14'39.823"N	104°24'57.278"W	10.00	
6917.00†	88.811	269.592	6500.87	123.67	-769.02	-61.92	40°14'39.801"N	104°24'58.559"W	10.00	
6929.09	90.000	269.811	6501.00†	135.72	-769.08	-74.01	40°14'39.800"N	104°24'58.714"W	10.00	End of 3D Arc (XS)
6929.09†	90.000	269.811	6501.00	135.73	-769.08	-74.01	40°14'39.800"N	104°24'58.714"W	0.00	Niobrara "B" Target
7017.00†	90.000	269.811	6501.00	223.38	-769.37	-161.92	40°14'39.797"N	104°24'59.848"W	0.00	
7117.00†	90.000	269.811	6501.00	323.08	-769.70	-261.92	40°14'39.794"N	104°25'01.138"W	0.00	
7217.00†	90.000	269.811	6501.00	422.78	-770.03	-361.92	40°14'39.791"N	104°25'02.427"W	0.00	
7317.00†	90.000	269.811	6501.00	522.48	-770.36	-461.92	40°14'39.787"N	104°25'03.717"W	0.00	
7417.00†	90.000	269.811	6501.00	622.18	-770.70	-561.92	40°14'39.784"N	104°25'05.006"W	0.00	
7517.00†	90.000	269.811	6501.00	721.88	-771.03	-661.92	40°14'39.781"N	104°25'06.296"W	0.00	
7617.00†	90.000	269.811	6501.00	821.58	-771.36	-761.92	40°14'39.777"N	104°25'07.586"W	0.00	



Planned Wellpath Report

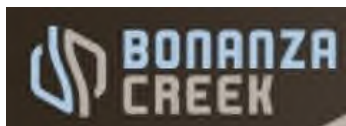
LONGHORN V41-10-9XRLNB PWP (REV-A.0)

Page 5 of 10



REFERENCE WELLPATH IDENTIFICATION			
Operator	BONANZA CREEK OIL COMPANY	Slot	SLOT#01 LONGHORN V41-10-9XRLNB (291'FNL & 384'FEL, SEC.10)
Area	COLORADO	Well	LONGHORN V41-10-9XRLNB
Field	WELD COUNTY	Wellbore	LONGHORN V41-10-9XRLNB PWB
Facility	SEC.10-T03N-R63W		

WELLPATH DATA (181 stations) † = interpolated/extrapolated station										
MD [ft]	Inclination [°]	Azimuth [°]	TVD [ft]	Vert Sect [ft]	North [ft]	East [ft]	Latitude	Longitude	DLS [°/100ft]	Comments
7717.00†	90.000	269.811	6501.00	921.28	-771.69	-861.92	40°14'39.774"N	104°25'08.875"W	0.00	
7817.00†	90.000	269.811	6501.00	1020.98	-772.02	-961.92	40°14'39.771"N	104°25'10.165"W	0.00	
7917.00†	90.000	269.811	6501.00	1120.69	-772.35	-1061.92	40°14'39.768"N	104°25'11.454"W	0.00	
8017.00†	90.000	269.811	6501.00	1220.39	-772.68	-1161.92	40°14'39.764"N	104°25'12.744"W	0.00	
8117.00†	90.000	269.811	6501.00	1320.09	-773.01	-1261.92	40°14'39.761"N	104°25'14.033"W	0.00	
8217.00†	90.000	269.811	6501.00	1419.79	-773.34	-1361.92	40°14'39.758"N	104°25'15.323"W	0.00	
8317.00†	90.000	269.811	6501.00	1519.49	-773.67	-1461.92	40°14'39.754"N	104°25'16.612"W	0.00	
8417.00†	90.000	269.811	6501.00	1619.19	-774.00	-1561.92	40°14'39.751"N	104°25'17.902"W	0.00	
8517.00†	90.000	269.811	6501.00	1718.89	-774.33	-1661.92	40°14'39.748"N	104°25'19.192"W	0.00	
8617.00†	90.000	269.811	6501.00	1818.59	-774.66	-1761.91	40°14'39.744"N	104°25'20.481"W	0.00	
8717.00†	90.000	269.811	6501.00	1918.29	-774.99	-1861.91	40°14'39.741"N	104°25'21.771"W	0.00	
8817.00†	90.000	269.811	6501.00	2018.00	-775.32	-1961.91	40°14'39.738"N	104°25'23.060"W	0.00	
8917.00†	90.000	269.811	6501.00	2117.70	-775.65	-2061.91	40°14'39.734"N	104°25'24.350"W	0.00	
9017.00†	90.000	269.811	6501.00	2217.40	-775.98	-2161.91	40°14'39.731"N	104°25'25.639"W	0.00	
9117.00†	90.000	269.811	6501.00	2317.10	-776.31	-2261.91	40°14'39.728"N	104°25'26.929"W	0.00	
9217.00†	90.000	269.811	6501.00	2416.80	-776.65	-2361.91	40°14'39.724"N	104°25'28.219"W	0.00	
9317.00†	90.000	269.811	6501.00	2516.50	-776.98	-2461.91	40°14'39.721"N	104°25'29.508"W	0.00	
9417.00†	90.000	269.811	6501.00	2616.20	-777.31	-2561.91	40°14'39.717"N	104°25'30.798"W	0.00	
9517.00†	90.000	269.811	6501.00	2715.90	-777.64	-2661.91	40°14'39.714"N	104°25'32.087"W	0.00	
9617.00†	90.000	269.811	6501.00	2815.60	-777.97	-2761.91	40°14'39.711"N	104°25'33.377"W	0.00	
9717.00†	90.000	269.811	6501.00	2915.31	-778.30	-2861.91	40°14'39.707"N	104°25'34.666"W	0.00	
9817.00†	90.000	269.811	6501.00	3015.01	-778.63	-2961.91	40°14'39.704"N	104°25'35.956"W	0.00	
9917.00†	90.000	269.811	6501.00	3114.71	-778.96	-3061.91	40°14'39.701"N	104°25'37.246"W	0.00	
10017.00†	90.000	269.811	6501.00	3214.41	-779.29	-3161.91	40°14'39.697"N	104°25'38.535"W	0.00	
10117.00†	90.000	269.811	6501.00	3314.11	-779.62	-3261.91	40°14'39.694"N	104°25'39.825"W	0.00	
10217.00†	90.000	269.811	6501.00	3413.81	-779.95	-3361.91	40°14'39.690"N	104°25'41.114"W	0.00	
10317.00†	90.000	269.811	6501.00	3513.51	-780.28	-3461.91	40°14'39.687"N	104°25'42.404"W	0.00	
10417.00†	90.000	269.811	6501.00	3613.21	-780.61	-3561.90	40°14'39.684"N	104°25'43.693"W	0.00	
10517.00†	90.000	269.811	6501.00	3712.91	-780.94	-3661.90	40°14'39.680"N	104°25'44.983"W	0.00	
10617.00†	90.000	269.811	6501.00	3812.62	-781.27	-3761.90	40°14'39.677"N	104°25'46.272"W	0.00	



Planned Wellpath Report

LONGHORN V41-10-9XRLNB PWP (REV-A.0)

Page 6 of 10



REFERENCE WELLPATH IDENTIFICATION			
Operator	BONANZA CREEK OIL COMPANY	Slot	SLOT#01 LONGHORN V41-10-9XRLNB (291'FNL & 384'FEL, SEC.10)
Area	COLORADO	Well	LONGHORN V41-10-9XRLNB
Field	WELD COUNTY	Wellbore	LONGHORN V41-10-9XRLNB PWB
Facility	SEC.10-T03N-R63W		

WELLPATH DATA (181 stations) † = interpolated/extrapolated station										
MD [ft]	Inclination [°]	Azimuth [°]	TVD [ft]	Vert Sect [ft]	North [ft]	East [ft]	Latitude	Longitude	DLS [°/100ft]	Comments
10717.00†	90.000	269.811	6501.00	3912.32	-781.60	-3861.90	40°14'39.673"N	104°25'47.562"W	0.00	
10817.00†	90.000	269.811	6501.00	4012.02	-781.93	-3961.90	40°14'39.670"N	104°25'48.852"W	0.00	
10917.00†	90.000	269.811	6501.00	4111.72	-782.26	-4061.90	40°14'39.666"N	104°25'50.141"W	0.00	
11017.00†	90.000	269.811	6501.00	4211.42	-782.60	-4161.90	40°14'39.663"N	104°25'51.431"W	0.00	
11117.00†	90.000	269.811	6501.00	4311.12	-782.93	-4261.90	40°14'39.660"N	104°25'52.720"W	0.00	
11217.00†	90.000	269.811	6501.00	4410.82	-783.26	-4361.90	40°14'39.656"N	104°25'54.010"W	0.00	
11317.00†	90.000	269.811	6501.00	4510.52	-783.59	-4461.90	40°14'39.653"N	104°25'55.299"W	0.00	
11417.00†	90.000	269.811	6501.00	4610.22	-783.92	-4561.90	40°14'39.649"N	104°25'56.589"W	0.00	
11517.00†	90.000	269.811	6501.00	4709.92	-784.25	-4661.90	40°14'39.646"N	104°25'57.879"W	0.00	
11617.00†	90.000	269.811	6501.00	4809.63	-784.58	-4761.90	40°14'39.642"N	104°25'59.168"W	0.00	
11680.90	90.000	269.811	6501.00	4873.34	-784.79	-4825.80	40°14'39.640"N	104°25'59.992"W	0.00	End of Tangent (XS)
11695.47	90.000	270.102	6501.00 ²	4887.86	-784.80	-4840.37	40°14'39.640"N	104°26'00.180"W	2.00	End of 3D Arc (J)
11717.00†	90.000	270.102	6501.00	4909.32	-784.76	-4861.90	40°14'39.640"N	104°26'00.458"W	0.00	
11817.00†	90.000	270.102	6501.00	5008.98	-784.58	-4961.90	40°14'39.642"N	104°26'01.747"W	0.00	
11917.00†	90.000	270.102	6501.00	5108.64	-784.41	-5061.90	40°14'39.643"N	104°26'03.037"W	0.00	
12017.00†	90.000	270.102	6501.00	5208.30	-784.23	-5161.90	40°14'39.645"N	104°26'04.326"W	0.00	
12117.00†	90.000	270.102	6501.00	5307.96	-784.05	-5261.90	40°14'39.647"N	104°26'05.616"W	0.00	
12217.00†	90.000	270.102	6501.00	5407.62	-783.87	-5361.90	40°14'39.648"N	104°26'06.906"W	0.00	
12317.00†	90.000	270.102	6501.00	5507.28	-783.70	-5461.90	40°14'39.650"N	104°26'08.195"W	0.00	
12417.00†	90.000	270.102	6501.00	5606.94	-783.52	-5561.90	40°14'39.651"N	104°26'09.485"W	0.00	
12517.00†	90.000	270.102	6501.00	5706.60	-783.34	-5661.90	40°14'39.653"N	104°26'10.774"W	0.00	
12617.00†	90.000	270.102	6501.00	5806.26	-783.16	-5761.90	40°14'39.654"N	104°26'12.064"W	0.00	
12717.00†	90.000	270.102	6501.00	5905.92	-782.98	-5861.90	40°14'39.656"N	104°26'13.353"W	0.00	
12817.00†	90.000	270.102	6501.00	6005.58	-782.81	-5961.90	40°14'39.657"N	104°26'14.643"W	0.00	
12917.00†	90.000	270.102	6501.00	6105.24	-782.63	-6061.90	40°14'39.659"N	104°26'15.933"W	0.00	
13017.00†	90.000	270.102	6501.00	6204.90	-782.45	-6161.90	40°14'39.660"N	104°26'17.222"W	0.00	
13117.00†	90.000	270.102	6501.00	6304.56	-782.27	-6261.90	40°14'39.662"N	104°26'18.512"W	0.00	
13217.00†	90.000	270.102	6501.00	6404.22	-782.09	-6361.90	40°14'39.663"N	104°26'19.801"W	0.00	
13317.00†	90.000	270.102	6501.00	6503.88	-781.92	-6461.90	40°14'39.665"N	104°26'21.091"W	0.00	
13417.00†	90.000	270.102	6501.00	6603.54	-781.74	-6561.90	40°14'39.666"N	104°26'22.380"W	0.00	



Planned Wellpath Report

LONGHORN V41-10-9XRLNB PWP (REV-A.0)

Page 7 of 10



REFERENCE WELLPATH IDENTIFICATION			
Operator	BONANZA CREEK OIL COMPANY	Slot	SLOT#01 LONGHORN V41-10-9XRLNB (291'FNL & 384'FEL, SEC.10)
Area	COLORADO	Well	LONGHORN V41-10-9XRLNB
Field	WELD COUNTY	Wellbore	LONGHORN V41-10-9XRLNB PWB
Facility	SEC.10-T03N-R63W		

WELLPATH DATA (181 stations) † = interpolated/extrapolated station										
MD [ft]	Inclination [°]	Azimuth [°]	TVD [ft]	Vert Sect [ft]	North [ft]	East [ft]	Latitude	Longitude	DLS [°/100ft]	Comments
13517.00†	90.000	270.102	6501.00	6703.20	-781.56	-6661.89	40°14'39.668"N	104°26'23.670"W	0.00	
13617.00†	90.000	270.102	6501.00	6802.86	-781.38	-6761.89	40°14'39.669"N	104°26'24.960"W	0.00	
13717.00†	90.000	270.102	6501.00	6902.53	-781.21	-6861.89	40°14'39.671"N	104°26'26.249"W	0.00	
13817.00†	90.000	270.102	6501.00	7002.19	-781.03	-6961.89	40°14'39.672"N	104°26'27.539"W	0.00	
13917.00†	90.000	270.102	6501.00	7101.85	-780.85	-7061.89	40°14'39.674"N	104°26'28.828"W	0.00	
14017.00†	90.000	270.102	6501.00	7201.51	-780.67	-7161.89	40°14'39.675"N	104°26'30.118"W	0.00	
14117.00†	90.000	270.102	6501.00	7301.17	-780.49	-7261.89	40°14'39.677"N	104°26'31.407"W	0.00	
14217.00†	90.000	270.102	6501.00	7400.83	-780.32	-7361.89	40°14'39.678"N	104°26'32.697"W	0.00	
14317.00†	90.000	270.102	6501.00	7500.49	-780.14	-7461.89	40°14'39.680"N	104°26'33.986"W	0.00	
14417.00†	90.000	270.102	6501.00	7600.15	-779.96	-7561.89	40°14'39.681"N	104°26'35.276"W	0.00	
14517.00†	90.000	270.102	6501.00	7699.81	-779.78	-7661.89	40°14'39.683"N	104°26'36.566"W	0.00	
14617.00†	90.000	270.102	6501.00	7799.47	-779.61	-7761.89	40°14'39.684"N	104°26'37.855"W	0.00	
14717.00†	90.000	270.102	6501.00	7899.13	-779.43	-7861.89	40°14'39.685"N	104°26'39.145"W	0.00	
14817.00†	90.000	270.102	6501.00	7998.79	-779.25	-7961.89	40°14'39.687"N	104°26'40.434"W	0.00	
14917.00†	90.000	270.102	6501.00	8098.45	-779.07	-8061.89	40°14'39.688"N	104°26'41.724"W	0.00	
15017.00†	90.000	270.102	6501.00	8198.11	-778.89	-8161.89	40°14'39.690"N	104°26'43.013"W	0.00	
15117.00†	90.000	270.102	6501.00	8297.77	-778.72	-8261.89	40°14'39.691"N	104°26'44.303"W	0.00	
15217.00†	90.000	270.102	6501.00	8397.43	-778.54	-8361.89	40°14'39.693"N	104°26'45.593"W	0.00	
15317.00†	90.000	270.102	6501.00	8497.09	-778.36	-8461.89	40°14'39.694"N	104°26'46.882"W	0.00	
15417.00†	90.000	270.102	6501.00	8596.75	-778.18	-8561.89	40°14'39.695"N	104°26'48.172"W	0.00	
15517.00†	90.000	270.102	6501.00	8696.41	-778.00	-8661.89	40°14'39.697"N	104°26'49.461"W	0.00	
15617.00†	90.000	270.102	6501.00	8796.07	-777.83	-8761.89	40°14'39.698"N	104°26'50.751"W	0.00	
15717.00†	90.000	270.102	6501.00	8895.74	-777.65	-8861.89	40°14'39.700"N	104°26'52.040"W	0.00	
15817.00†	90.000	270.102	6501.00	8995.40	-777.47	-8961.89	40°14'39.701"N	104°26'53.330"W	0.00	
15917.00†	90.000	270.102	6501.00	9095.06	-777.29	-9061.89	40°14'39.702"N	104°26'54.620"W	0.00	
16017.00†	90.000	270.102	6501.00	9194.72	-777.12	-9161.89	40°14'39.704"N	104°26'55.909"W	0.00	
16117.00†	90.000	270.102	6501.00	9294.38	-776.94	-9261.89	40°14'39.705"N	104°26'57.199"W	0.00	
16217.00†	90.000	270.102	6501.00	9394.04	-776.76	-9361.89	40°14'39.707"N	104°26'58.488"W	0.00	
16317.00†	90.000	270.102	6501.00	9493.70	-776.58	-9461.89	40°14'39.708"N	104°26'59.778"W	0.00	
16417.00†	90.000	270.102	6501.00	9593.36	-776.40	-9561.89	40°14'39.709"N	104°27'01.067"W	0.00	



Planned Wellpath Report

LONGHORN V41-10-9XRLNB PWP (REV-A.0)

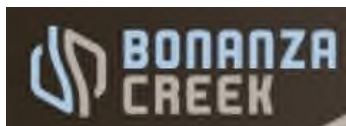
Page 8 of 10



REFERENCE WELLPATH IDENTIFICATION			
Operator	BONANZA CREEK OIL COMPANY	Slot	SLOT#01 LONGHORN V41-10-9XRLNB (291'FNL & 384'FEL, SEC.10)
Area	COLORADO	Well	LONGHORN V41-10-9XRLNB
Field	WELD COUNTY	Wellbore	LONGHORN V41-10-9XRLNB PWB
Facility	SEC.10-T03N-R63W		

WELLPATH DATA (181 stations)										
MD [ft]	Inclination [°]	Azimuth [°]	TVD [ft]	Vert Sect [ft]	North [ft]	East [ft]	Latitude	Longitude	DLS [°/100ft]	Comments
16460.62	90.000	270.102	6501.00 ³	9636.83	-776.33	-9605.51	40°14'39.710"N	104°27'01.630"W	0.00	End of Tangent (J)

HOLE & CASING SECTIONS									
- Ref Wellbore: LONGHORN V41-10-9XRLNB PWB					Ref Wellpath: LONGHORN V41-10-9XRLNB PWP (REV-A.0)				
String/Diameter	Start MD [ft]	End MD [ft]	Interval [ft]	Start TVD [ft]	End TVD [ft]	Start N/S [ft]	Start E/W [ft]	End N/S [ft]	End E/W [ft]
9.625in Casing Surface	17.00	1700.00	1683.00	17.00	1700.00	0.00	0.00	0.00	0.00
8.5in Open Hole	1700.00	16460.62	14760.62	1700.00	6501.00	0.00	0.00	-776.33	-9605.51



Planned Wellpath Report

LONGHORN V41-10-9XRLNB PWP (REV-A.0)

Page 9 of 10



REFERENCE WELLPATH IDENTIFICATION			
Operator	BONANZA CREEK OIL COMPANY	Slot	SLOT#01 LONGHORN V41-10-9XRLNB (291'FNL & 384'FEL, SEC.10)
Area	COLORADO	Well	LONGHORN V41-10-9XRLNB
Field	WELD COUNTY	Wellbore	LONGHORN V41-10-9XRLNB PWB
Facility	SEC.10-T03N-R63W		

TARGETS									
Name	MD [ft]	TVD [ft]	North [ft]	East [ft]	Grid East [US ft]	Grid North [US ft]	Latitude	Longitude	Shape
SEC.09-T03N-R63W		0.00	0.00	0.00	3302568.86	1334491.00	40°14'47.400"N	104°24'57.760"W	polygon
SEC.10-T03N-R63W		0.00	0.00	0.00	3302568.86	1334491.00	40°14'47.400"N	104°24'57.760"W	polygon
3) LONGHORN V41-10-9XRLNB BHL (1060'FNL & 470'FWL, SEC.09)	16460.62	6501.00	-776.33	-9605.51	3292973.99	1333597.36	40°14'39.710"N	104°27'01.630"W	point
LONGHORN V41-10-9XRLNB EP (1059'FNL & 531'FEL, SEC.10)		6501.00	-769.08	-145.01	3302433.27	1333720.24	40°14'39.800"N	104°24'59.630"W	point
1) LONGHORN V41-10-9XRLNB EP REV-1 (1059'FNL & 460'FEL, SEC.10)	6929.09	6501.00	-769.08	-74.01	3302504.26	1333721.11	40°14'39.800"N	104°24'58.714"W	point
2) LONGHORN V41-10-9XRLNB MID-LATERAL TARGET (1061'FNL & 0'FWL, SEC.10)	11695.47	6501.00	-784.80	-4840.37	3297738.67	1333647.13	40°14'39.640"N	104°26'00.180"W	point
SEC.09/10-T03N-R63W (460'FEL/FWL SETBACK)		6501.00	0.00	0.00	3302568.86	1334491.00	40°14'47.400"N	104°24'57.760"W	polygon

SURVEY PROGRAM -				
Ref Wellbore: LONGHORN V41-10-9XRLNB PWB		Ref Wellpath: LONGHORN V41-10-9XRLNB PWP (REV-A.0)		
Start MD [ft]	End MD [ft]	Positional Uncertainty Model	Log Name/Comment	Wellbore
17.00	16460.62	BHI NaviTrak (Standard)		LONGHORN V41-10-9XRLNB PWB



Planned Wellpath Report

LONGHORN V41-10-9XRLNB PWP (REV-A.0)

Page 10 of 10



REFERENCE WELLPATH IDENTIFICATION				
Operator	BONANZA CREEK OIL COMPANY	Slot	SLOT#01 LONGHORN V41-10-9XRLNB (291'FNL & 384'FEL, SEC.10)	
Area	COLORADO	Well	LONGHORN V41-10-9XRLNB	
Field	WELD COUNTY	Wellbore	LONGHORN V41-10-9XRLNB PWB	
Facility	SEC.10-T03N-R63W			

WELLPATH COMMENTS				
MD [ft]	Inclination [°]	Azimuth [°]	TVD [ft]	Comment
3629.63	12.990	142.779	3599.00	Parkman
6354.96	34.041	253.991	6241.00	Sharon Springs
6453.81	43.497	258.620	6318.00	Sharon Springs "A"
6549.83	52.809	261.778	6382.00	Sharon Springs "B"
6630.09	60.644	263.865	6426.00	Niobrara "A" Chalk
6644.69	62.073	264.208	6433.00	Niobrara "A" Marl
6775.97	74.948	266.972	6481.00	Niobrara "B" Chalk
6929.09	90.000	269.811	6501.00	Niobrara "B" Target

DESIGN COMMENTS				
MD [ft]	Inclination [°]	Azimuth [°]	TVD [ft]	Comment
17.00	0.000	142.779	17.00	Tie On
2000.00	0.000	142.779	2000.00	End of Tangent
2649.50	12.990	142.779	2643.95	End of Build (XS)
5951.28	12.990	142.779	5861.24	End of Tangent (XS)
6929.09	90.000	269.811	6501.00	End of 3D Arc (XS)
11680.90	90.000	269.811	6501.00	End of Tangent (XS)
11695.47	90.000	270.102	6501.00	End of 3D Arc (J)
16460.62	90.000	270.102	6501.00	End of Tangent (J)