

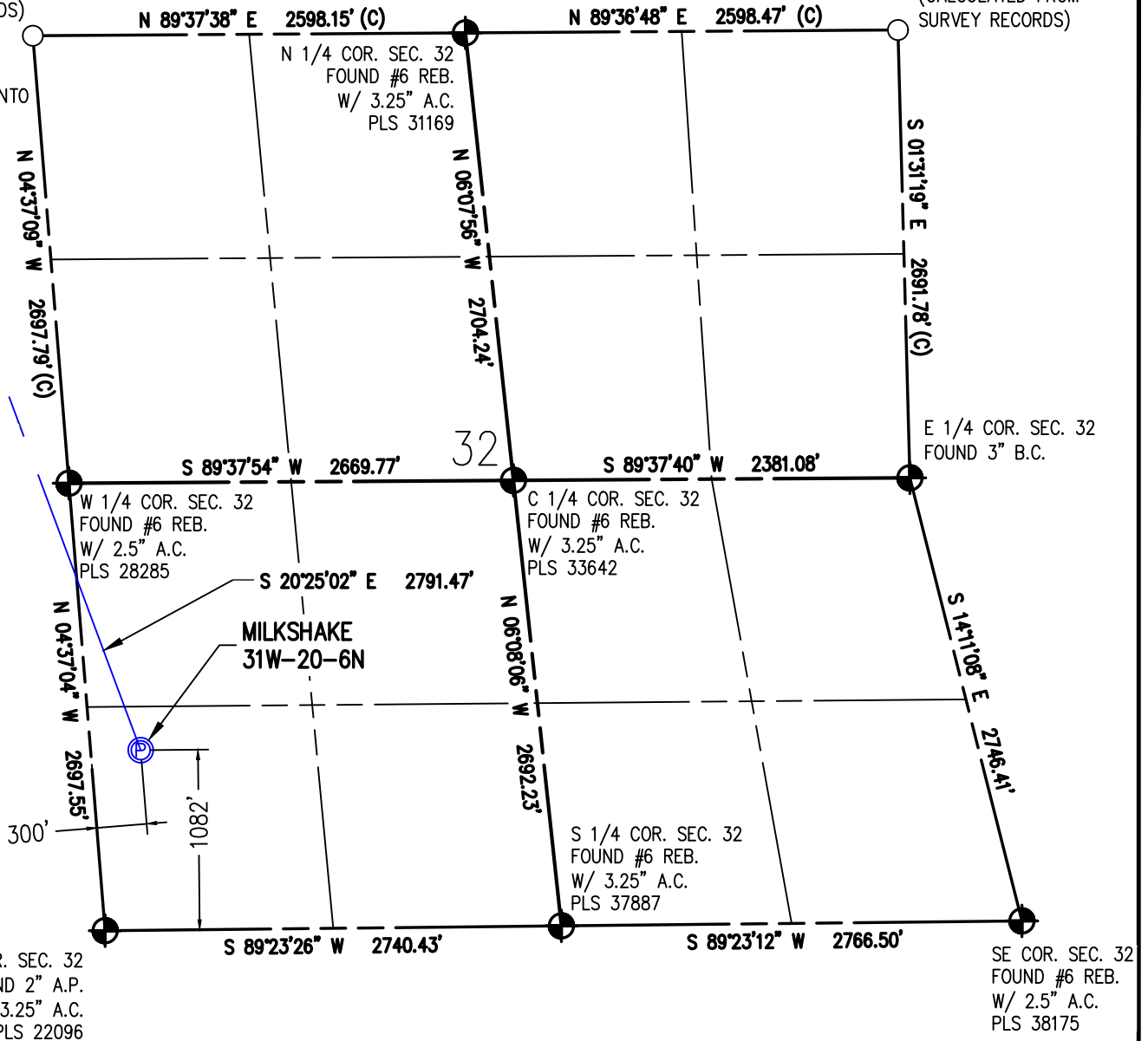
WELL CERTIFICATION EXHIBIT  
MILKSHAKE 31W-20-6N

SW 1/4 SW 1/4 SEC. 32, T6N, R67W, 6TH P.M.

NW COR. SEC. 32  
(CALCULATED  
FROM SURVEY  
RECORDS)

NE COR. SEC. 32  
(CALCULATED FROM  
SURVEY RECORDS)

WELL BORE  
CONTINUES INTO  
SECTION 31  
(SHEET 2)



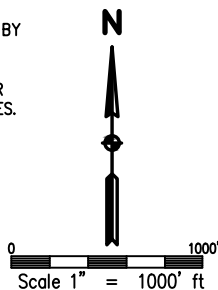
NOTES:

1. INDICATES SECTION CORNER
2. INDICATES CALCULATED CORNER
3. (C) INDICATES CALCULATED DIMENSION
4. ELEVATION BASED ON NAVD88 (GEOID12B)
5. BEARINGS DERIVED FROM COLORADO COORDINATE SYSTEM OF 1983 NORTH ZONE.
6. OPERATOR: JEFF VAN HORN
7. IMPROVEMENTS: SEE LOCATION DRAWING FOR ALL VISIBLE IMPROVEMENTS WITHIN 500' OF DISTURBED AREA.
8. WELL FOOTAGES ARE MEASURED AT RIGHT ANGLES TO THE SECTION LINES.

SURFACE LOCATION  
SEC. 32, T6N, R67W  
GROUND ELEVATION = 4947.3'  
PDOP = 1.4  
LATITUDE = 40.438938°  
LONGITUDE = -104.924277°  
1082' FSL, 300' FWL  
ENTRY POINT LOCATION  
SEC. 31, T6N, R67W  
LATITUDE = 40.446134°  
LONGITUDE = -104.927714°  
1665' FNL, 460' FEL  
BOTTOM HOLE LOCATION  
SEC. 36, T6N, R68W  
LATITUDE = 40.446222°  
LONGITUDE = -104.961791°  
1530' FNL, 460' FWL

I HEREBY CERTIFY THAT THIS WELL LOCATION CERTIFICATE WAS PREPARED BY ME, OR UNDER MY DIRECT SUPERVISION, THAT THE FIELD WORK WAS COMPLETED ON 3/2/2017, THAT IT IS NOT A LAND SURVEY PLAT OR AN IMPROVEMENT SURVEY PLAT, AND THAT IT IS NOT TO BE RELIED UPON FOR ESTABLISHMENT OF FENCE, BUILDING OR OTHER FUTURE IMPROVEMENT LINES.

AARON A. DEMO  
Professional Land Surveyor Registration No. 38285  
State of Colorado  
FOR AND ON BEHALF OF BASELINE ENGINEERING CORP.

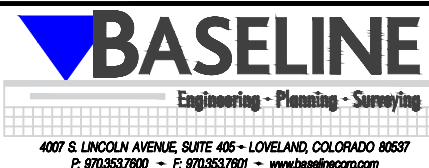


NEAREST CULTURAL ITEMS:

BUILDING: 763' S  
BUILDING UNIT: 1241' S  
HIGH OCCUPANCY BUILDING UNIT: 5280'+  
DESIGNATED OUTSIDE ACTIVITY AREA: 5280'+  
PUBLIC ROAD: WELD COUNTY ROAD 28 1050' S  
ABOVE GROUND UTILITY: 1183' S  
RAILROAD: 5280'+  
PROPERTY LINE: 94' N  
SURFACE USE: GRASSLAND  
NEAREST EXISTING WELL: 548' N



DRAWN BY	RPM
CHECKED BY	AAD
INITIAL SUBMITTAL	8/18/2017
REVISED	10/27/2017
DRAWING SIZE	8.5" X 11"
JOB NO.	EXT06N67W32-01
SHEET	1 OF 3



4007 S. LINCOLN AVENUE, SUITE 405 - LOVELAND, COLORADO 80537  
P: 970.353.7800 - F: 970.353.7801 - [www.baselineincorp.com](http://www.baselineincorp.com)

WELL CERTIFICATION EXHIBIT  
MILKSHAKE 31W-20-6N

SW 1/4 SW 1/4 SEC. 32, T6N, R67W, 6TH P.M.

NW COR. SEC. 31  
FOUND #6 REB.  
W/ 2.5" A.C.  
PLS 31169

N 1/4 COR. SEC. 31  
FOUND #6 REB.  
W/ 3.25" A.C.  
PLS 22098

NE COR. SEC. 31  
(CALCULATED  
FROM SURVEY  
RECORDS)

WELL BORE  
CONTINUES INTO  
SECTION 36  
(SHEET 3)

ENTRY POINT  
N 20°25'02" W 2791.47'

WELL BORE  
CONTINUES INTO  
SECTION 32  
(SHEET 1)

W 1/4 COR. SEC. 31  
FOUND #6 REB.  
W/ 2.5" A.C.  
PLS 31169

C 1/4 COR. SEC. 31  
(CALCULATED FROM  
SURVEY RECORDS)

E 1/4 COR. SEC. 31  
FOUND #6 REB.  
W/ 2.5" A.C.  
PLS 28285

SW COR. SEC. 31  
FOUND #6 REB.  
NO CAP

S 1/4 COR. SEC. 31  
FOUND #6 REB.  
W/ 3.25" A.C.  
PLS 22098



SE COR. SEC. 31  
FOUND 2" A.P.  
W/ 3.25" A.C.  
PLS 22096

I HEREBY CERTIFY THAT THIS WELL LOCATION CERTIFICATE WAS PREPARED BY ME, OR UNDER MY DIRECT SUPERVISION, THAT THE FIELD WORK WAS COMPLETED ON 3/2/2017, THAT IT IS NOT A LAND SURVEY PLAT OR AN IMPROVEMENT SURVEY PLAT, AND THAT IT IS NOT TO BE RELIED UPON FOR ESTABLISHMENT OF FENCE, BUILDING OR OTHER FUTURE IMPROVEMENT LINES.

AARON A. DEMO  
Professional Land Surveyor Registration No. 38285  
State of Colorado  
FOR AND ON BEHALF OF BASELINE ENGINEERING CORP.

SURFACE LOCATION  
SEC. 32, T6N, R67W  
GROUND ELEVATION = 4947.3'  
PDOP = 1.4  
LATITUDE = 40.438938°  
LONGITUDE = -104.924277°  
1082' FSL, 300' FWL  
ENTRY POINT LOCATION  
SEC. 31, T6N, R67W  
LATITUDE = 40.446134°  
LONGITUDE = -104.927714°  
1665' FNL, 460' FWL  
BOTTOM HOLE LOCATION  
SEC. 36, T6N, R68W  
LATITUDE = 40.446222°  
LONGITUDE = -104.961791°  
1530' FNL, 460' FWL

NOTES:

1.  INDICATES SECTION CORNER
2.  INDICATES CALCULATED CORNER
3. (C) INDICATES CALCULATED DIMENSION
4. ELEVATION BASED ON NAVD88 (GEOID12B)
5. BEARINGS DERIVED FROM COLORADO COORDINATE SYSTEM OF 1983 NORTH ZONE.
6. OPERATOR: JEFF VAN HORN
7. IMPROVEMENTS: SEE LOCATION DRAWING FOR ALL VISIBLE IMPROVEMENTS WITHIN 500' OF DISTURBED AREA.
8. WELL FOOTAGES ARE MEASURED AT RIGHT ANGLES TO THE SECTION LINES.

NEAREST CULTURAL ITEMS:

BUILDING: 763' S  
BUILDING UNIT: 1241' S  
HIGH OCCUPANCY BUILDING UNIT: 5280'+  
DESIGNATED OUTSIDE ACTIVITY AREA: 5280'+  
PUBLIC ROAD: WELD COUNTY ROAD 28 1050' S  
ABOVE GROUND UTILITY: 1183' S  
RAILROAD: 5280'+  
PROPERTY LINE: 94' N  
SURFACE USE: GRASSLAND  
NEAREST EXISTING WELL: 548' N



DRAWN BY	RPM
CHECKED BY	AAD
INITIAL SUBMITTAL	8/18/2017
REVISED	10/27/2017
DRAWING SIZE	8.5" X 11"
JOB NO.	EXT06N67W32-01
SHEET	2 OF 3

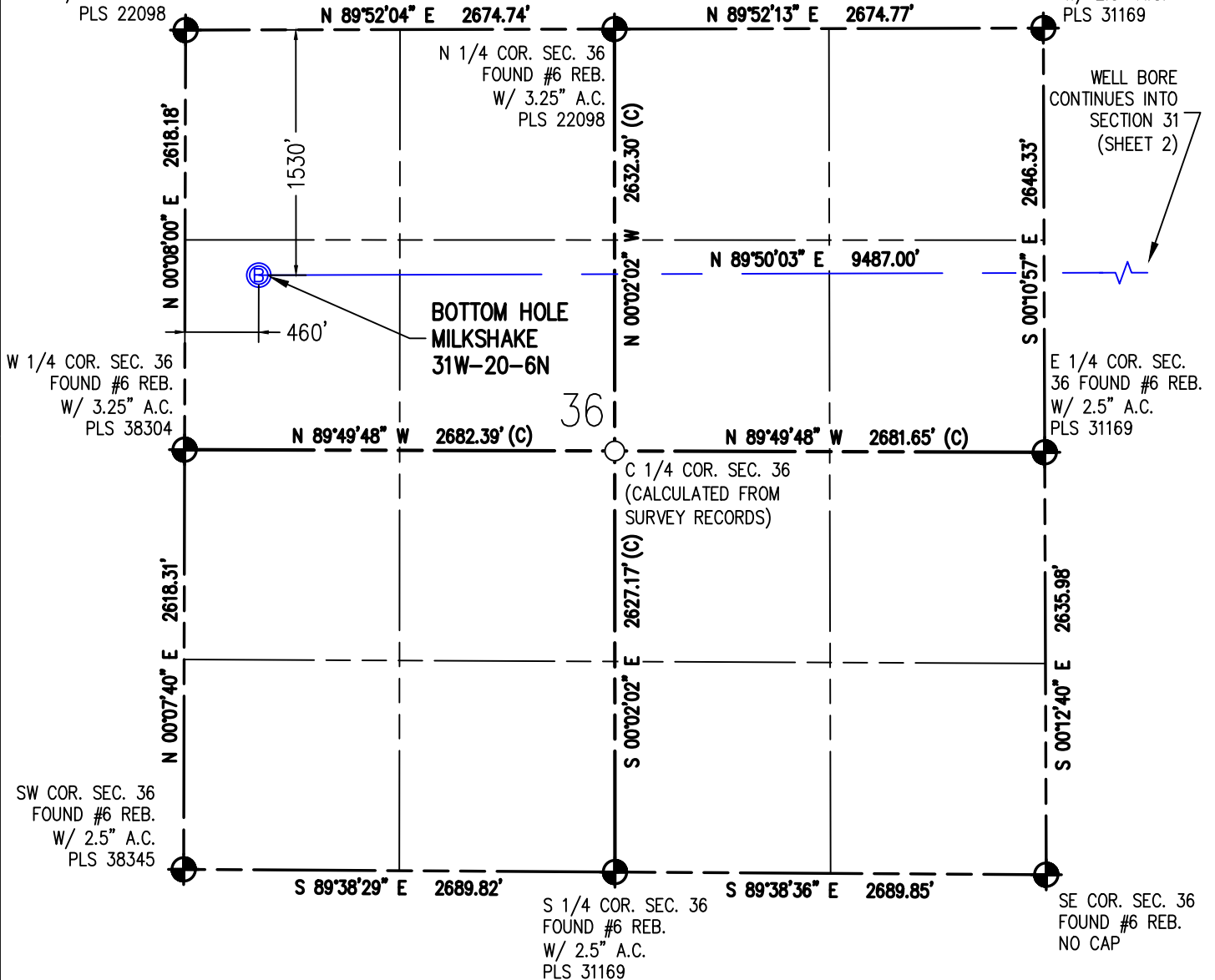


# WELL CERTIFICATION EXHIBIT MILKSHAKE 31W-20-6N

NW COR. SEC. 36  
FOUND #6 REB.  
W/ 3.25" A.C.  
PLS 22098

SW 1/4 SW 1/4 SEC. 32, T6N, R67W, 6TH P.M.

NE COR. SEC. 36  
FOUND #6 REB.  
W/ 2.5" A.C.  
PLS 31169



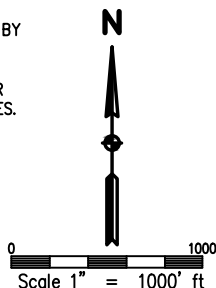
## NOTES:

1. INDICATES SECTION CORNER
2. INDICATES CALCULATED CORNER
3. (C) INDICATES CALCULATED DIMENSION
4. ELEVATION BASED ON NAVD88 (GEOID12B)
5. BEARINGS DERIVED FROM COLORADO COORDINATE SYSTEM OF 1983 NORTH ZONE.
6. OPERATOR: JEFF VAN HORN
7. IMPROVEMENTS: SEE LOCATION DRAWING FOR ALL VISIBLE IMPROVEMENTS WITHIN 500' OF DISTURBED AREA.
8. WELL FOOTAGES ARE MEASURED AT RIGHT ANGLES TO THE SECTION LINES.

SURFACE LOCATION  
SEC. 32, T6N, R67W  
GROUND ELEVATION = 4947.3'  
PDOP = 1.4  
LATITUDE = 40.438938°  
LONGITUDE = -104.924277°  
1082' FSL, 300' FWL  
ENTRY POINT LOCATION  
SEC. 31, T6N, R67W  
LATITUDE = 40.446134°  
LONGITUDE = -104.927714°  
1665' FNL, 460' FEL  
BOTTOM HOLE LOCATION  
SEC. 36, T6N, R68W  
LATITUDE = 40.446222°  
LONGITUDE = -104.961791°  
1530' FNL, 460' FWL

I HEREBY CERTIFY THAT THIS WELL LOCATION CERTIFICATE WAS PREPARED BY ME, OR UNDER MY DIRECT SUPERVISION, THAT THE FIELD WORK WAS COMPLETED ON 3/2/2017, THAT IT IS NOT A LAND SURVEY PLAT OR AN IMPROVEMENT SURVEY PLAT, AND THAT IT IS NOT TO BE RELIED UPON FOR ESTABLISHMENT OF FENCE, BUILDING OR OTHER FUTURE IMPROVEMENT LINES.

AARON A. DEMO  
Professional Land Surveyor Registration No. 38285  
State of Colorado  
FOR AND ON BEHALF OF BASELINE ENGINEERING CORP.



## NEAREST CULTURAL ITEMS:

BUILDING: 763' S  
BUILDING UNIT: 1241' S  
HIGH OCCUPANCY BUILDING UNIT: 5280'+  
DESIGNATED OUTSIDE ACTIVITY AREA: 5280'+  
PUBLIC ROAD: WELD COUNTY ROAD 28 1050' S  
ABOVE GROUND UTILITY: 1183' S  
RAILROAD: 5280'+  
PROPERTY LINE: 94' N  
SURFACE USE: GRASSLAND  
NEAREST EXISTING WELL: 548' N



DRAWN BY	RPM	CHECKED BY	AAD
INITIAL SUBMITTAL	8/18/2017		
REVISED	10/27/2017		
DRAWING SIZE	8.5" X 11"		
JOB NO.	EXT06N67W32-01		
SHEET	3 of 3		

