


***SURVEY NOTES***

1. SEE SHEET 3 OF 3 FOR COORDINATE TABLE, SURVEY NOTES, AND SURVEYOR'S CERTIFICATE.

	BP AMERICA PRODUCTION COMPANY US LOWER 48 ONSHORE
	WELL LOCATION PLAT
	<b>LUCHINI 32-06-12 2</b> PART OF SECTION 07, TOWNSHIP 32N, RANGE 05W AND SECTION 12, TOWNSHIP 32N, RANGE 06W, N.M.P.M. ARCHULETA COUNTY, COLORADO

DRAWN BY CFW/RLM	CHECKED BY RLT	SCALE 1"=1000'	DATE 10/24/2017	SHEET 1 OF 3	REVISION
---------------------	-------------------	-------------------	--------------------	-----------------	----------

**LEGEND**

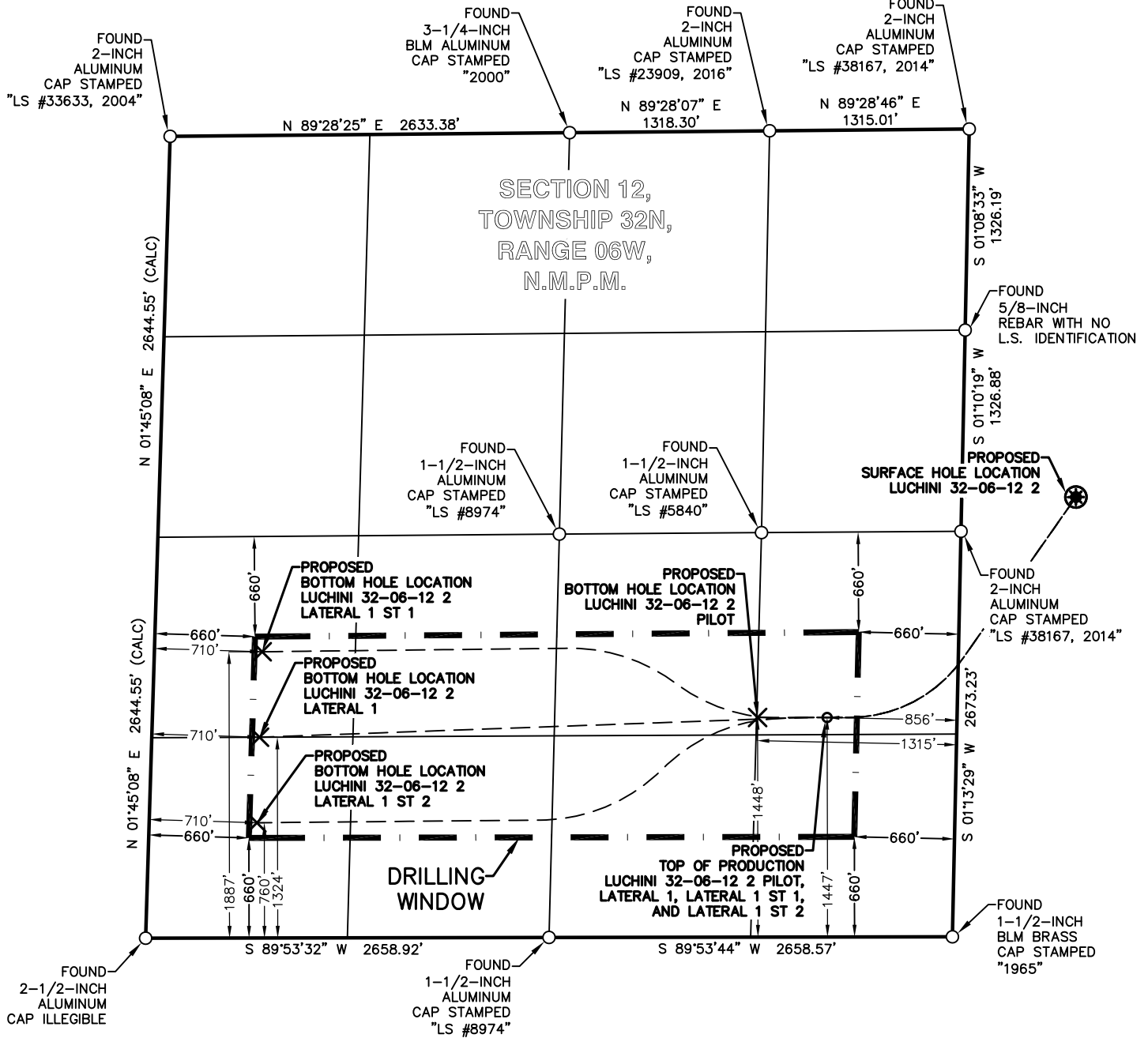
FOUND MONUMENT ○

PROPOSED SURFACE HOLE LOCATION ⊗

PROPOSED BOTTOM HOLE LOCATION ×

0 500 1000 2000

GRAPHIC SCALE IN FEET



BP AMERICA  
PRODUCTION COMPANY  
US LOWER 48 ONSHORE

**WELL LOCATION PLAT**

**LUCHINI 32-06-12 2**

PART OF  
SECTION 07, TOWNSHIP 32N, RANGE 05W AND  
SECTION 12, TOWNSHIP 32N, RANGE 06W,  
N.M.P.M.  
ARCHULETA COUNTY, COLORADO

DRAWN BY  
CFW/RLM

CHECKED BY  
RLT

SCALE  
1"=1000'

DATE  
10/24/2017

SHEET  
2 OF 3

REVISION

LUCHINI 32-06-12 2 WELLBORE DISTANCES	
SHL TO TOP	2,321'
TOP TO BHL PILOT	459'
TOP TO BHL LATERAL 1	3,744'
TOP TO BHL LATERAL 1 ST 1	3,825'
TOP TO BHL LATERAL 1 ST 2	3,938'

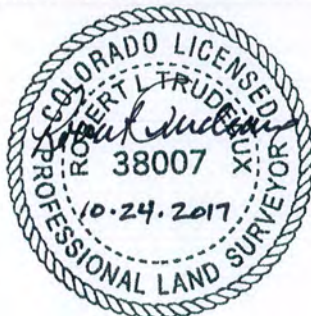
LUCHINI 32-06-12 2	CSZ NAD'83	NAD'83	TIES	SEC / TWP / RNG	ELEVATION
PROPOSED SURFACE HOLE LOCATION (SHL)	N (Y) = 1,139,306.97' E (X) = 2,433,750.94'	LAT. = 37.03309957°N LON. = 107.43989198°W	FNL = 2408' FWL = 752'	SEC 07, TWP 32N, RNG 05W	EXISTING GROUND 6262.51'
PROPOSED TOP OF PRODUCTION (TOP) PILOT, LAT 1, LAT 1 ST 1, AND LAT 1 ST 2	N (Y) = 1,137,854.02' E (X) = 2,432,111.69'	LAT. = 37.02901647°N LON. = 107.44540256°W	FSL = 1447' FEL = 856'	SEC 12, TWP 32N, RNG 06W	PROPOSED GRADE 6260.25'
PROPOSED BOTTOM HOLE LOCATION (BHL) PILOT	N (Y) = 1,137,854.02' E (X) = 2,431,652.98'	LAT. = 37.02899022°N LON. = 107.44697349°W	FSL = 1448' FEL = 1315'	SEC 12, TWP 32N, RNG 06W	
PROPOSED BOTTOM HOLE LOCATION (BHL) LATERAL 1	N (Y) = 1,137,723.93' E (X) = 2,428,370.32'	LAT. = 37.02844458°N LON. = 107.45820620°W	FSL = 1324' FWL = 710'	SEC 12, TWP 32N, RNG 06W	
PROPOSED BOTTOM HOLE LOCATION (BHL) LATERAL 1 ST 1	N (Y) = 1,138,287.51' E (X) = 2,428,387.56'	LAT. = 37.02999304°N LON. = 107.45818763°W	FSL = 1887' FWL = 710'	SEC 12, TWP 32N, RNG 06W	
PROPOSED BOTTOM HOLE LOCATION (BHL) LATERAL 1 ST 2	N (Y) = 1,137,160.24' E (X) = 2,428,353.08'	LAT. = 37.02689583°N LON. = 107.45822477°W	FSL = 760' FWL = 710'	SEC 12, TWP 32N, RNG 06W	


## SURVEY NOTES

1. BEARING BASIS FOR THIS SURVEY IS BASED ON THE NORTH AMERICAN DATUM OF 1983, COLORADO STATE PLANE COORDINATE SYSTEM, COLORADO SOUTH, ZONE 0503.
2. ELEVATION BASIS FOR THIS SURVEY IS BASED ON THE NORTH AMERICAN VERTICAL DATUM OF 1988 (GEOID12A).
3. SURVEYED IN THE FIELD ON 07/22/2017.
4. BEARINGS AND DISTANCE SHOWN ARE MEASURED IN THE FIELD UNLESS OTHERWISE NOTED.
5. ALL MEASURED DISTANCES SHOWN ARE GRID USING A COMBINED SCALE FACTOR 0.99974591.
6. GPS INSTRUMENT OPERATOR: BRIAN BONIFACE
7. GPS PDOP VALUE: 1.5

## SURVEYOR'S CERTIFICATE

I, ROBERT L. TRUDEAUX, A PROFESSIONAL LAND SURVEYOR IN THE STATE OF COLORADO, DO HEREBY CERTIFY THAT THIS PLAT WAS PREPARED FROM AN ACTUAL SURVEY PERFORMED BY ME OR UNDER MY DIRECT RESPONSIBILITY, SUPERVISION AND CHECKING, AND IS TRUE AND CORRECT TO THE BEST OF MY KNOWLEDGE AND BELIEF BASED ON THE STANDARDS OF CARE OF PROFESSIONAL LAND SURVEYORS PRACTICING IN THE STATE OF COLORADO. THIS DOES NOT REPRESENT A LAND SURVEY PLAT, IMPROVEMENT SURVEY PLAT, OR MONUMENTED LAND SURVEY AS DEFINED BY COLORADO REVISED STATUTES 38-51-102 AND CANNOT BE RELIED UPON TO DETERMINE OWNERSHIP. THIS SURVEY IS NOT A GUARANTY OR WARRANTY, EITHER EXPRESSED OR IMPLIED.



	BP AMERICA PRODUCTION COMPANY US LOWER 48 ONSHORE
WELL LOCATION PLAT	
LUCHINI 32-06-12 2 PART OF SECTION 07, TOWNSHIP 32N, RANGE 05W AND SECTION 12, TOWNSHIP 32N, RANGE 06W, N.M.P.M. ARCHULETA COUNTY, COLORADO	

DRAWN BY CFW/RLM	CHECKED BY RLT	SCALE N/A	DATE 10/24/2017	SHEET 3 OF 3	REVISION
---------------------	-------------------	--------------	--------------------	-----------------	----------