

OPERATOR: **Extraction Oil & Gas**

WELL NAME: **HFE 6**

FIELD NAME: DJ Basin - Wattenberg

DRILLING RIG: Cyclone 37

API #: 05-123-44775

LAT/LONG: 40.294721, -104.995106

SURFACE HOLE: SWSW S22-T4N-R68W, 1125' FSL, 1019' FWL

BOTTOM HOLE: S22-T4N-R68W, 1240' FSL, 460' FEL

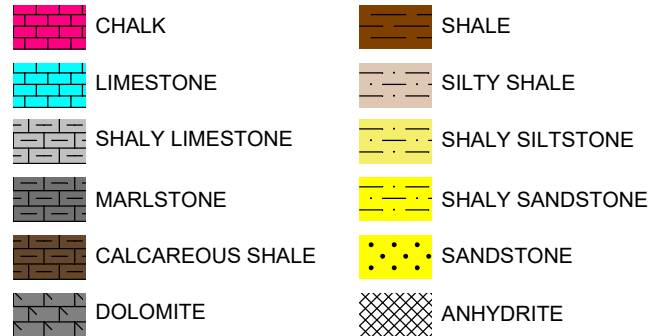


Earth Science Agency, LLC

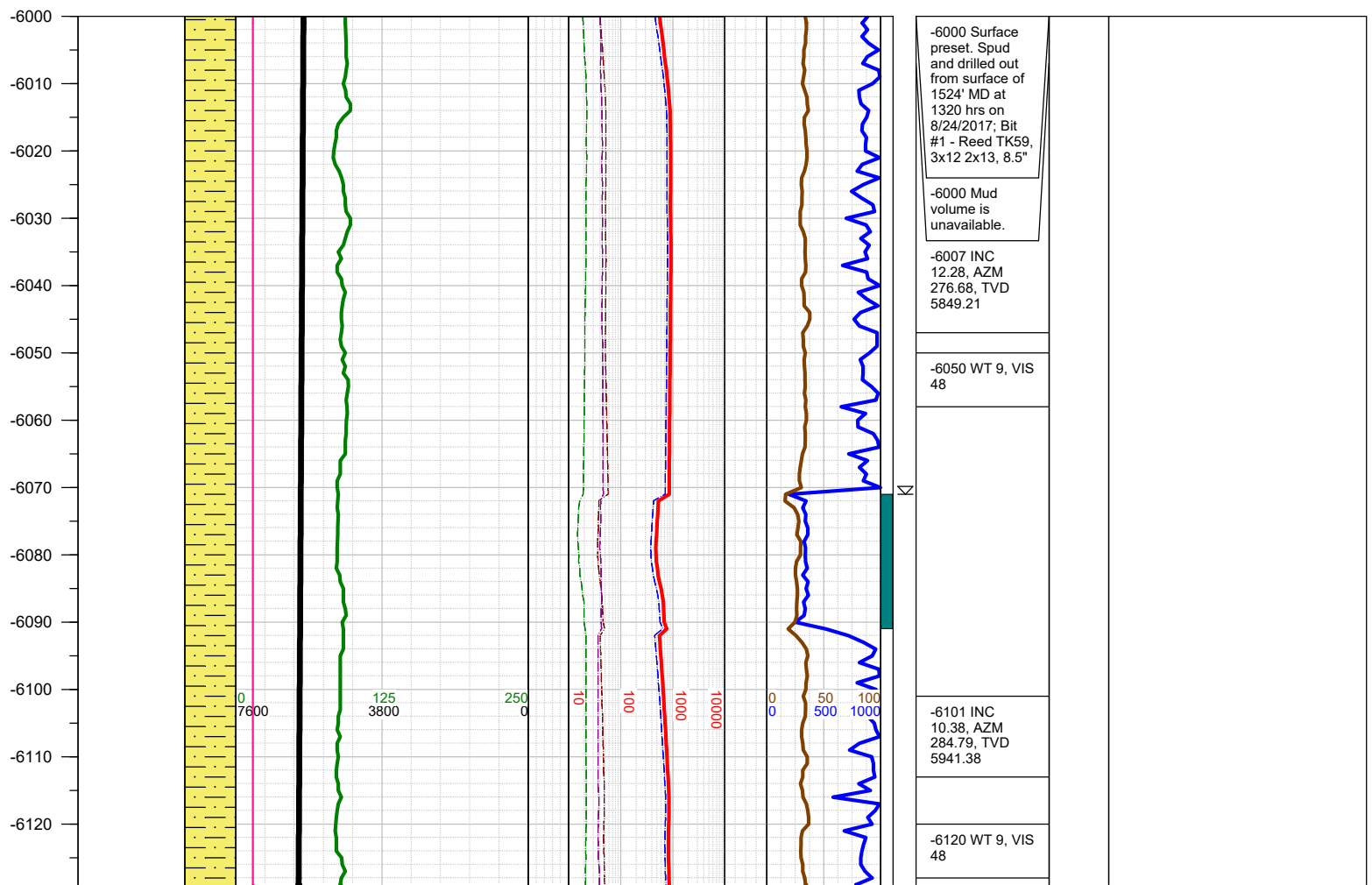
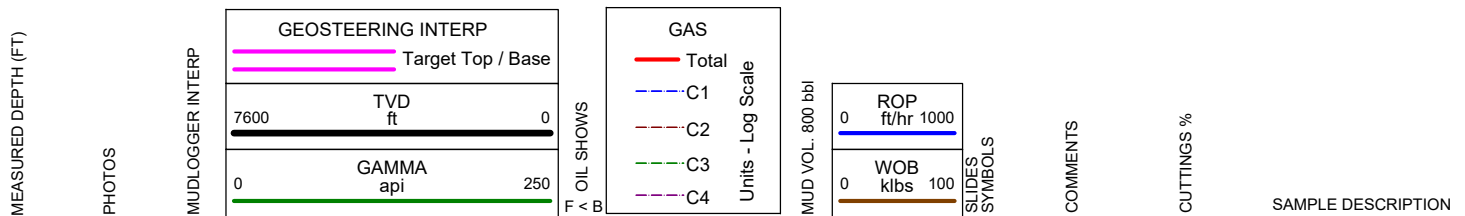
COUNTY: Weld
STATE: Colorado
GROUND ELEVATION: 4918'
KELLY BUSHING: 4946'
DRILLING FLUID: OBM
TVD VS. MD: 7243' / 11960'
SPUD DATE: August 24, 2017
TD DATE: August 26, 2017

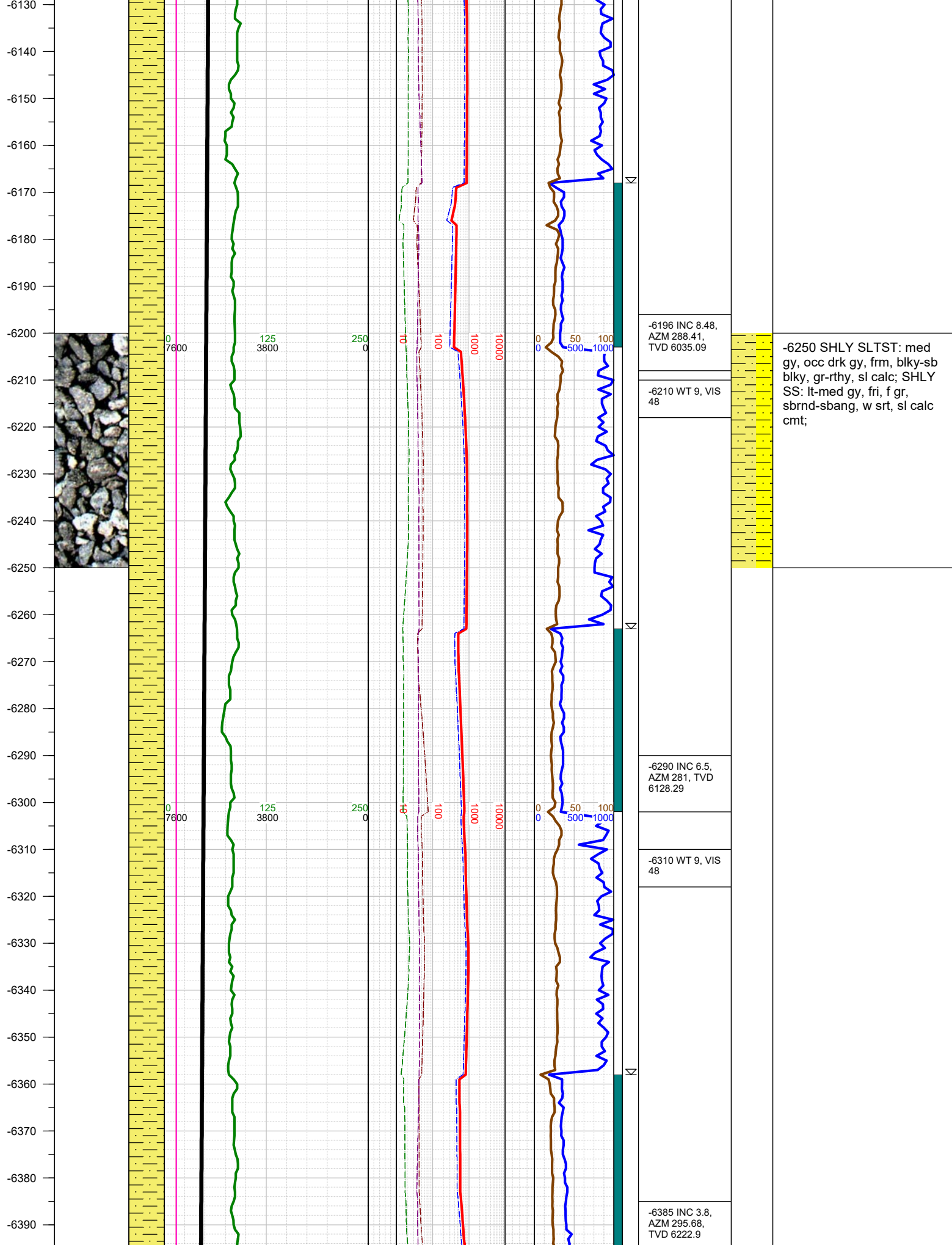
DEPTHS LOGGED: 6000' - 11960'
DATES LOGGED: August 24, 2017 - August 26, 2017
GEOLOGISTS: Levi Heintzelman, Kyle Welty
SCALE: 5" = 100'

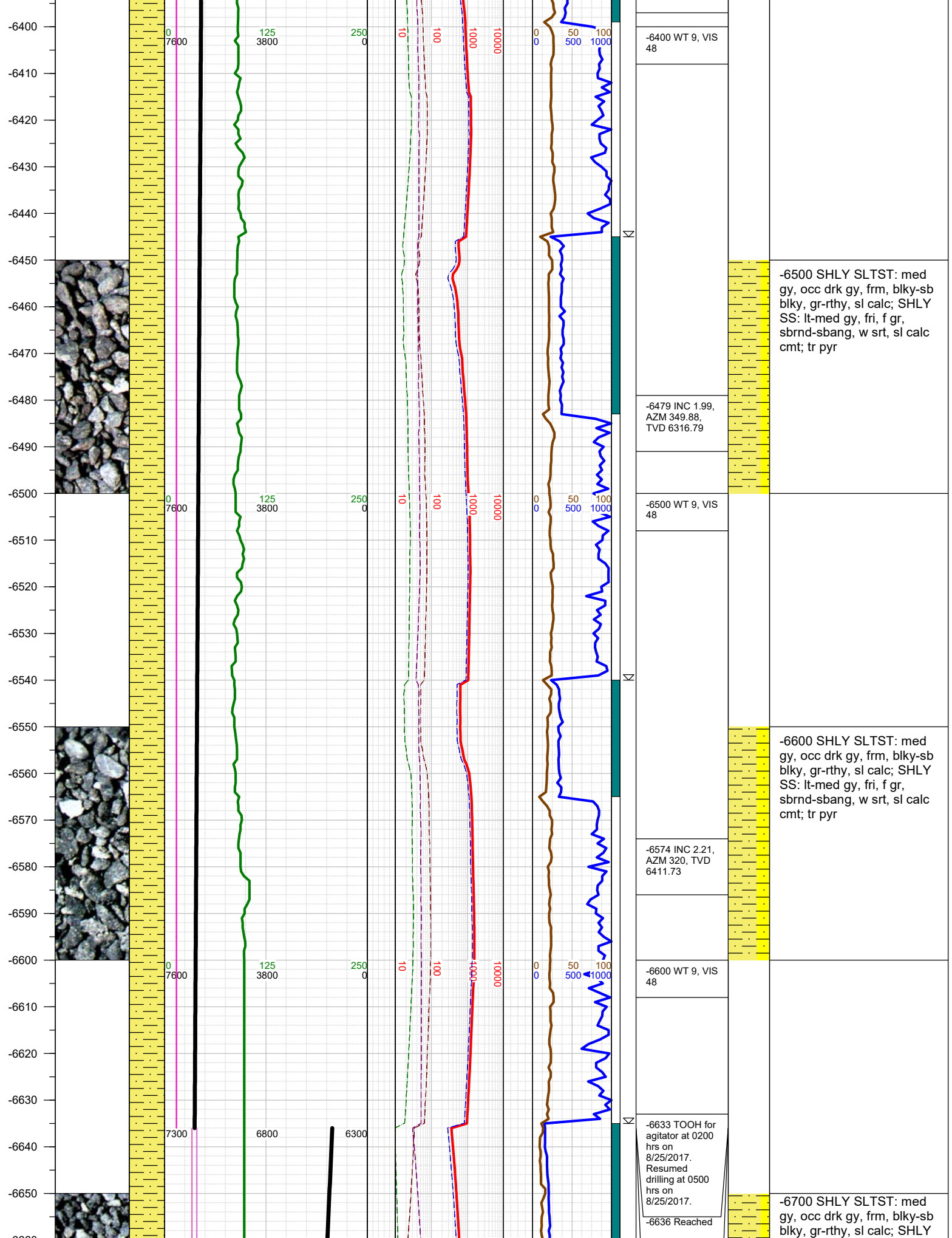
LEGEND

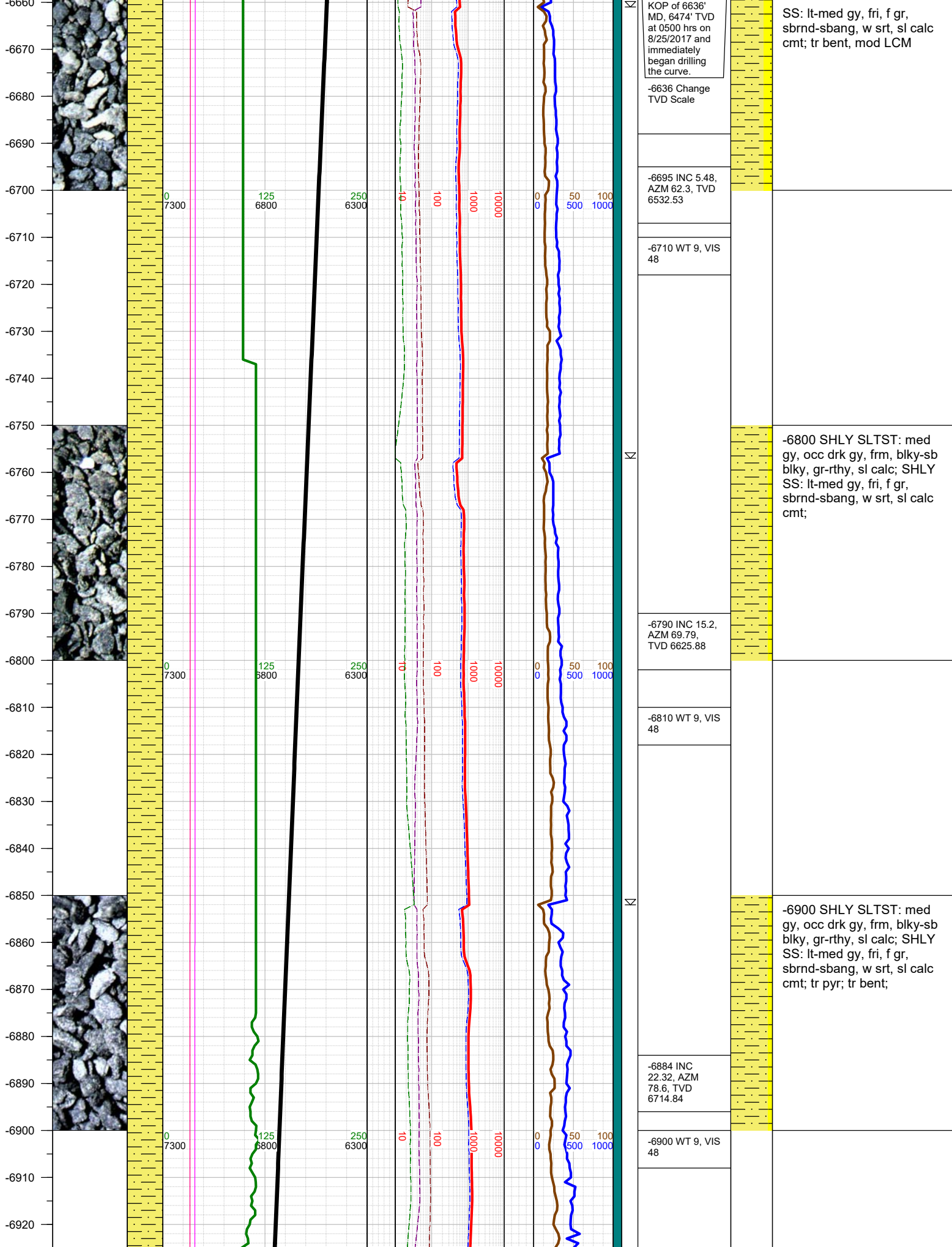


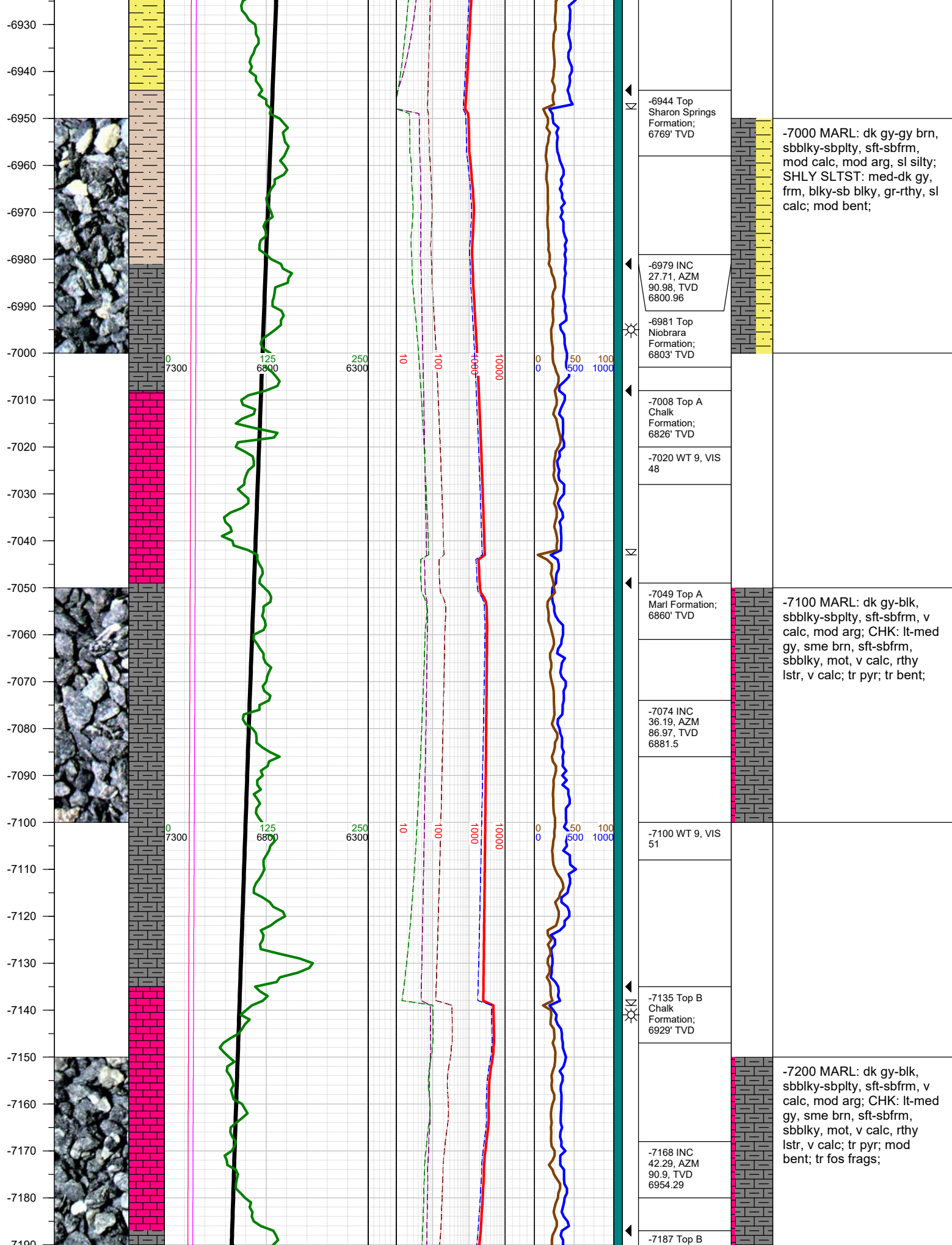
FORMATION \approx CONNECTION Δ MIDNIGHT NEW BIT GAS SHOW FAULT

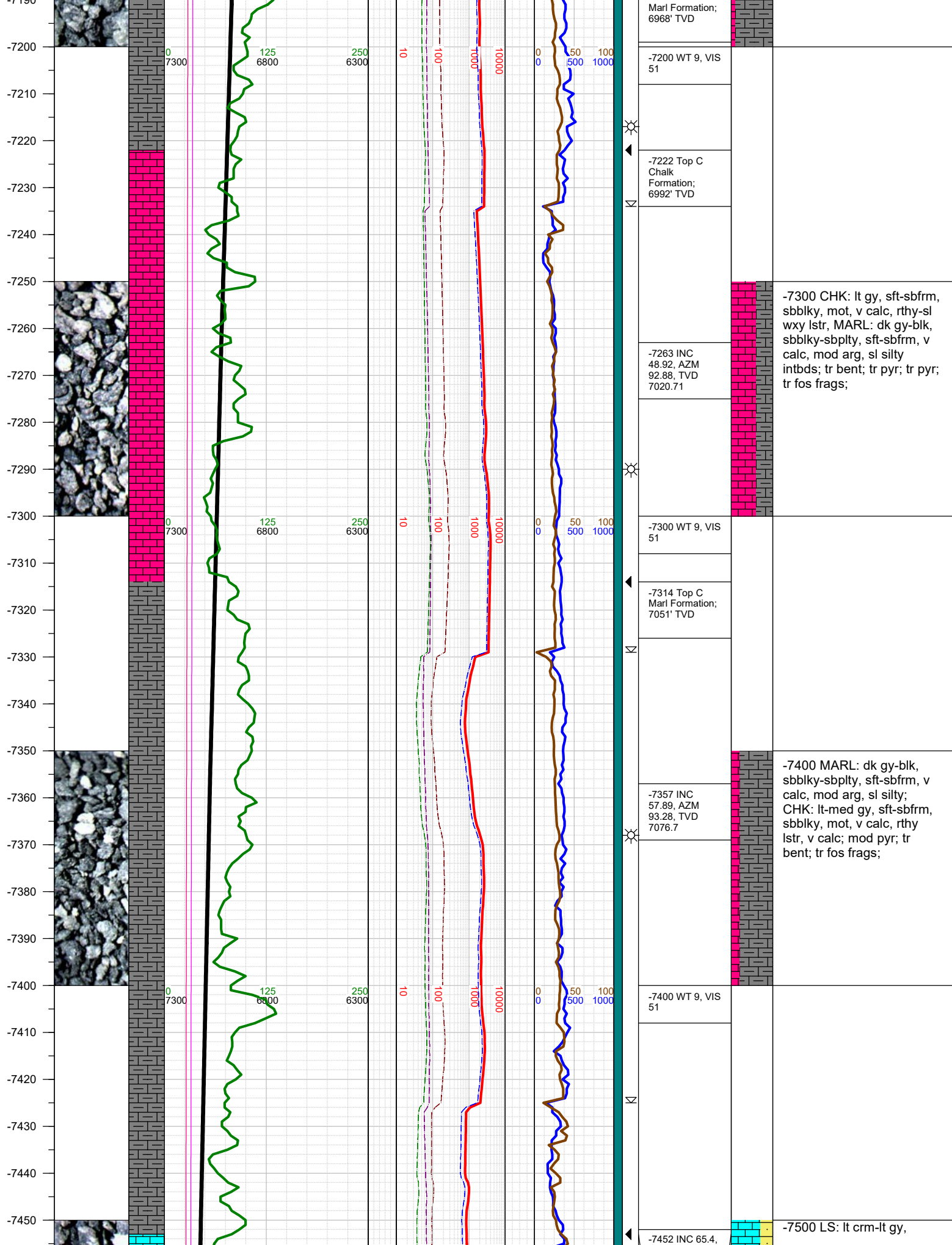


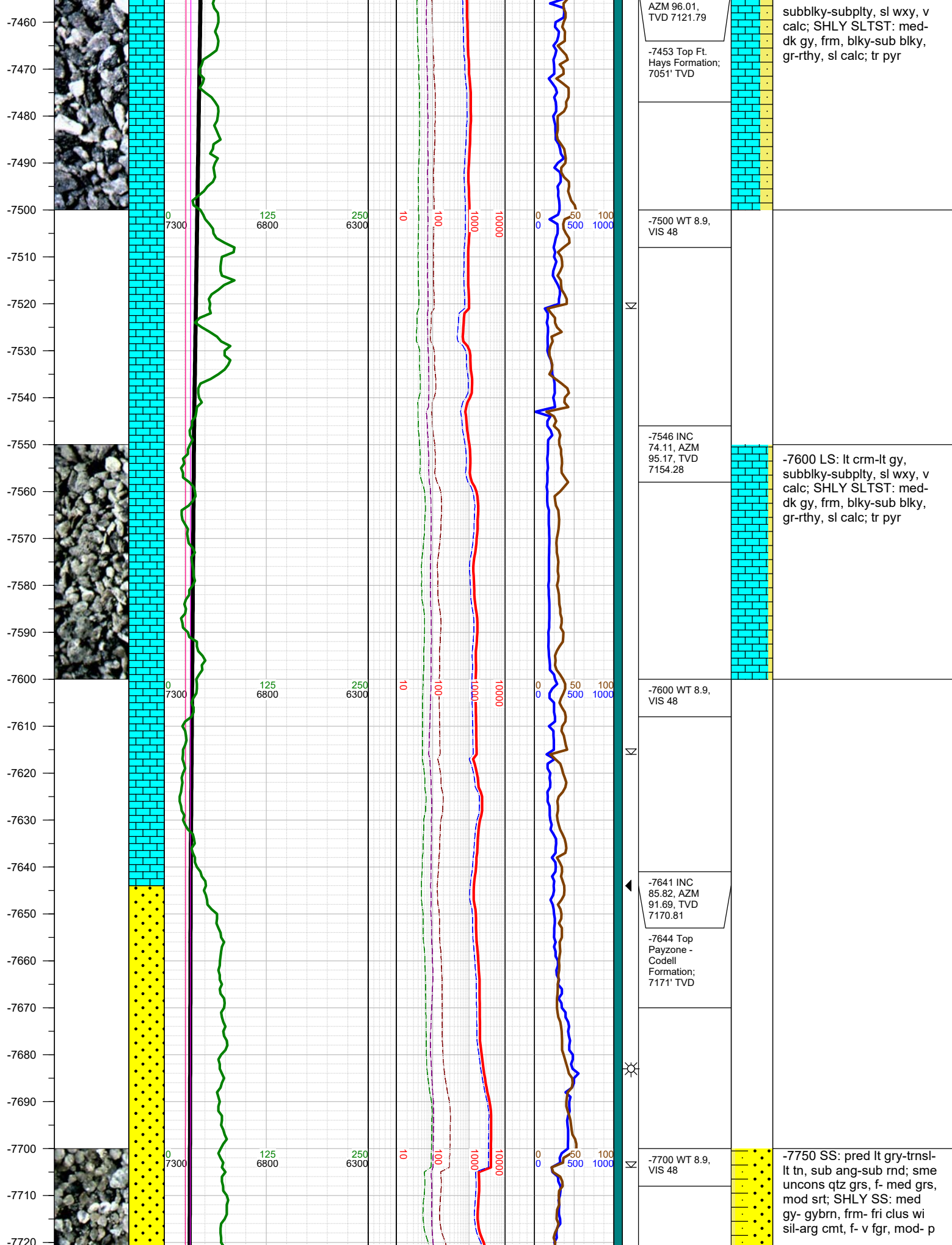












AZM 96.01,
TVD 7121.79

-7453 Top Ft.
Hays Formation;
7051' TVD

subblky-subply, sl wxy, v
calc; SHLY SLTST: med-
dk gy, frm, blky-sub blky,
gr-rthy, sl calc; tr pyr

-7500 WT 8.9,
VIS 48

-7546 INC
74.11, AZM
95.17, TVD
7154.28

-7600 LS: lt crm-lt gy,
subblky-subply, sl wxy, v
calc; SHLY SLTST: med-
dk gy, frm, blky-sub blky,
gr-rthy, sl calc; tr pyr

-7600 WT 8.9,
VIS 48

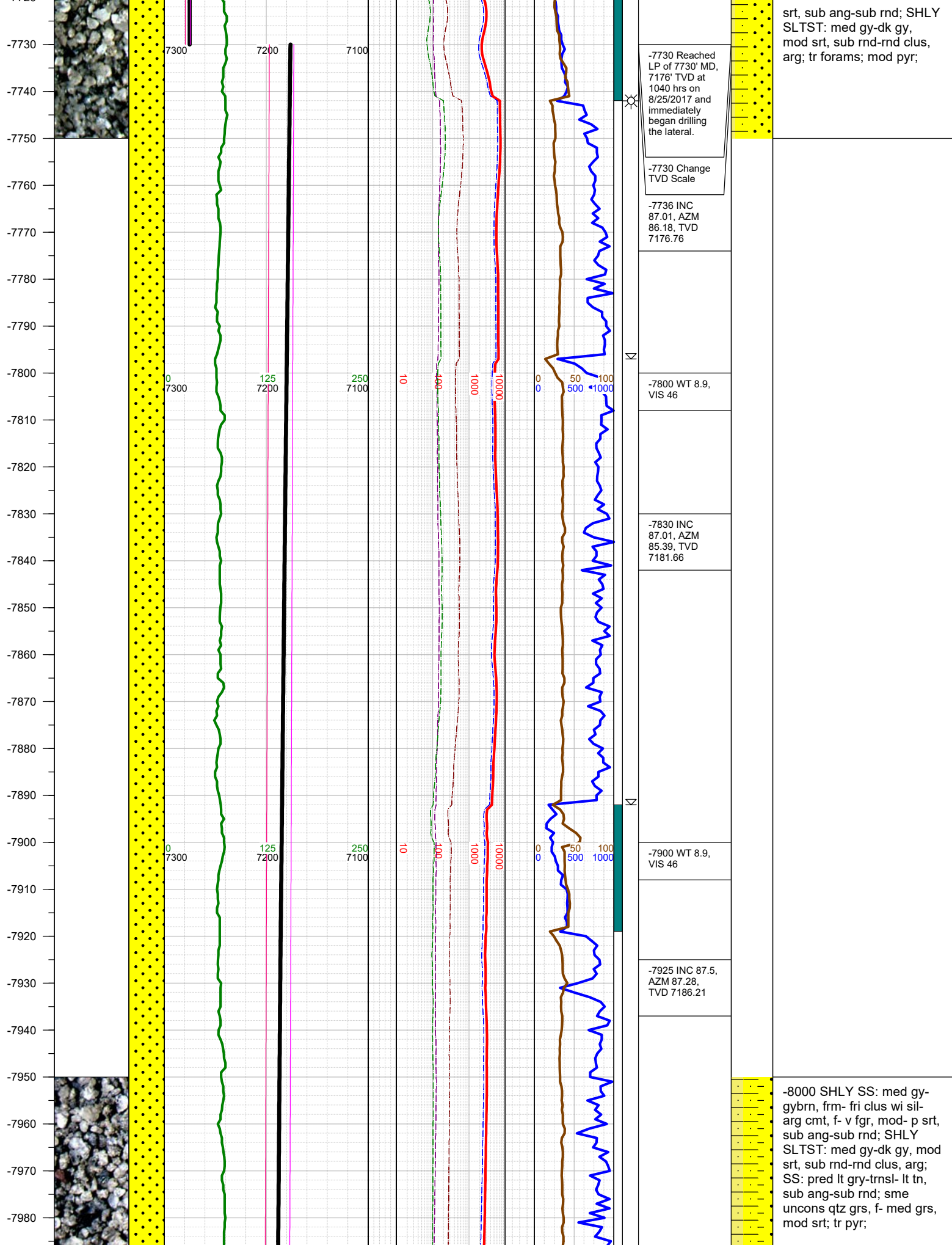
-7641 INC
85.82, AZM
91.69, TVD
7170.81

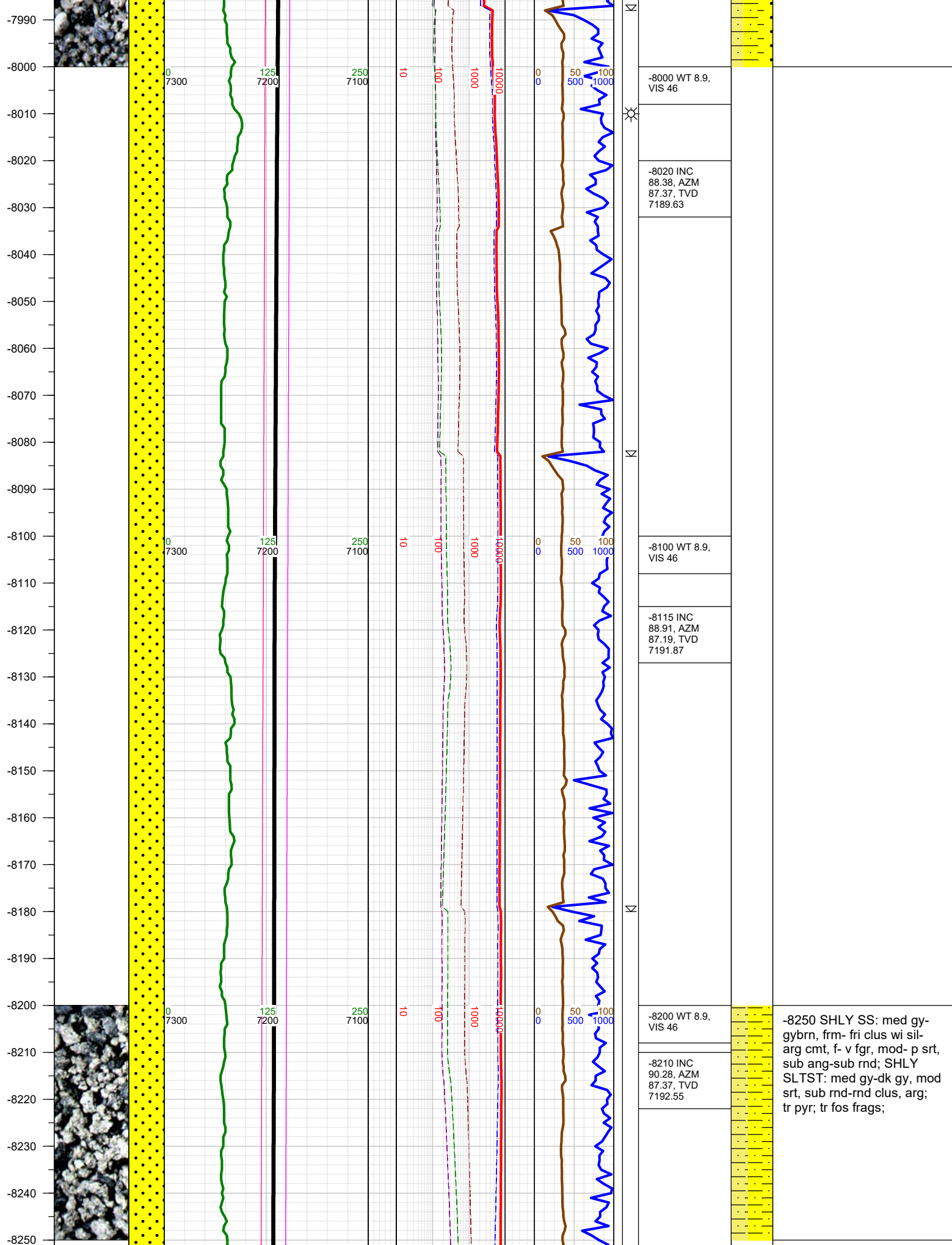
-7644 Top
Payzone -
Codell
Formation;
7171' TVD

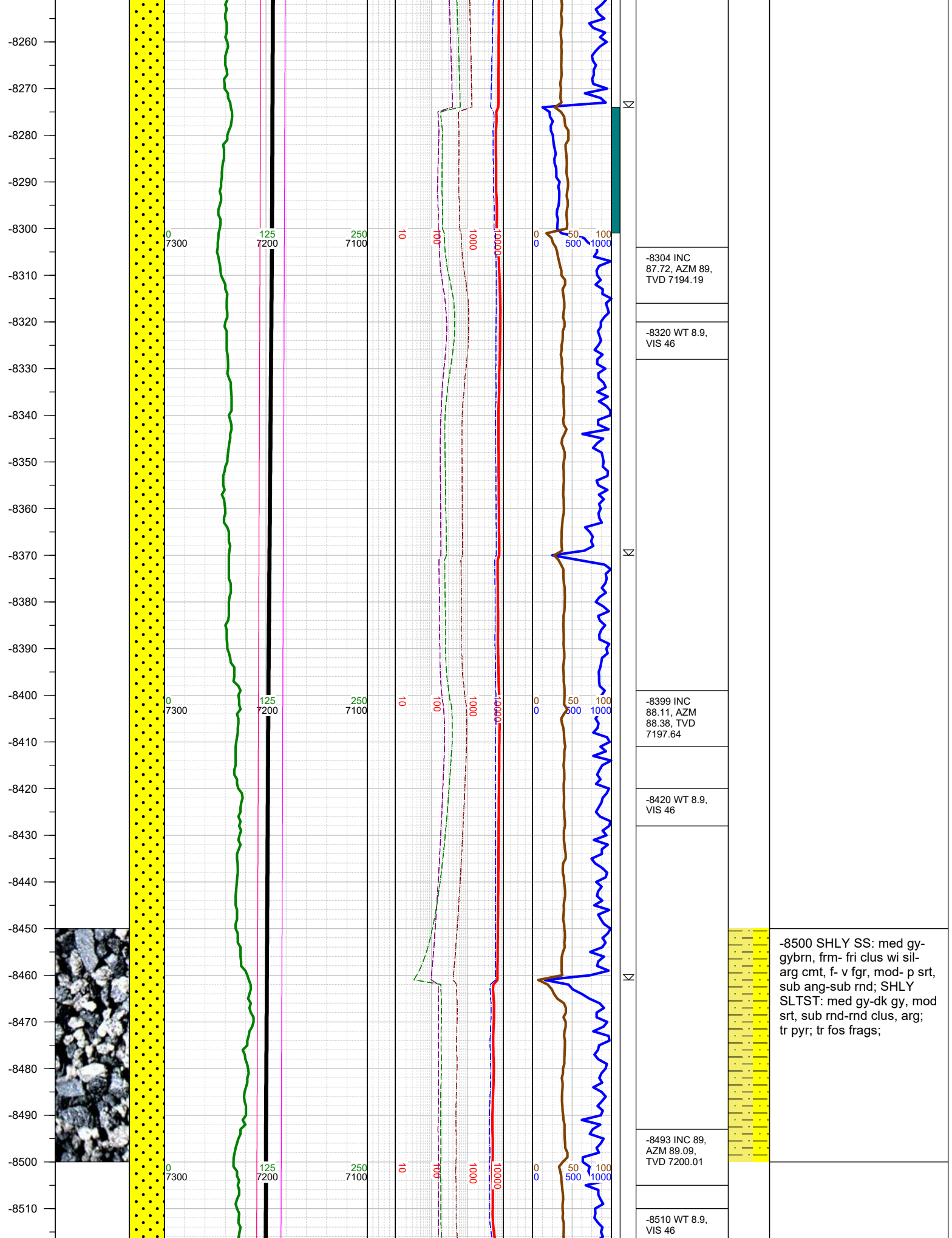


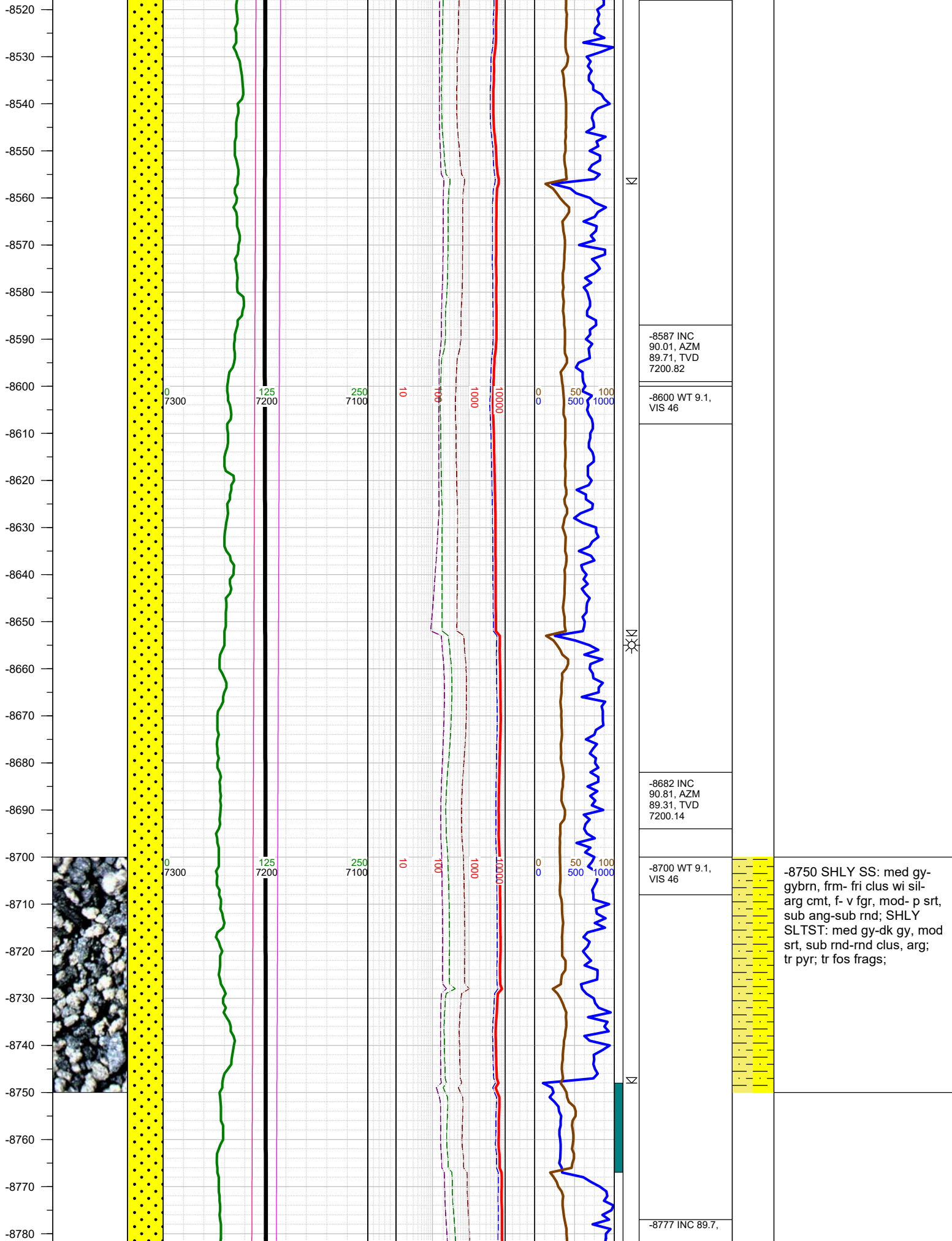
-7700 WT 8.9,
VIS 48

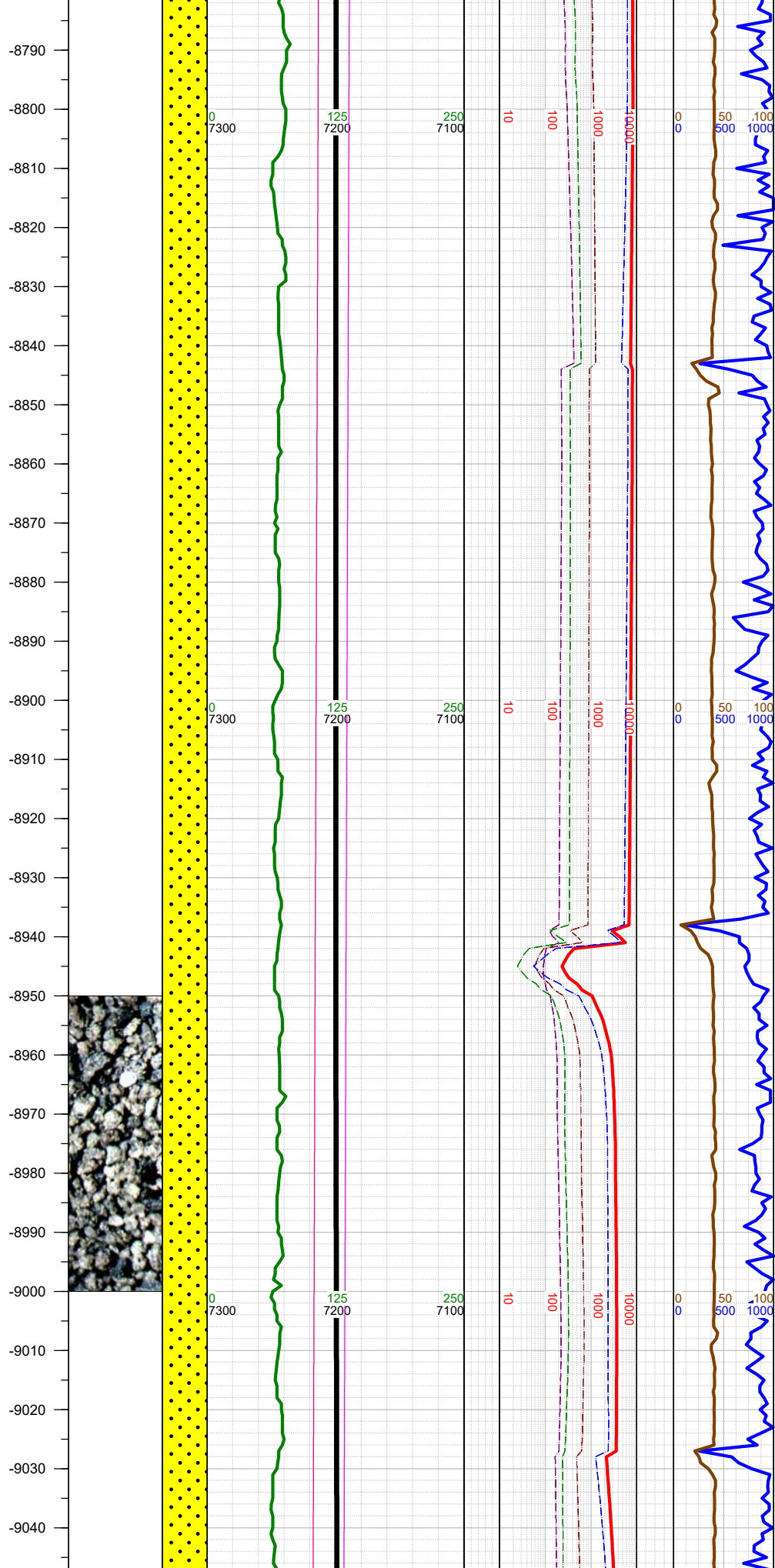
-7750 SS: pred lt gry-trnsl-
lt tn, sub ang-sub rnd; sme
uncons qtz grs, f- med grs,
mod srt; SHLY SS: med
gy- gybrn, frm- fri clus wi
sil-arg cmt, f- v fgr, mod- p



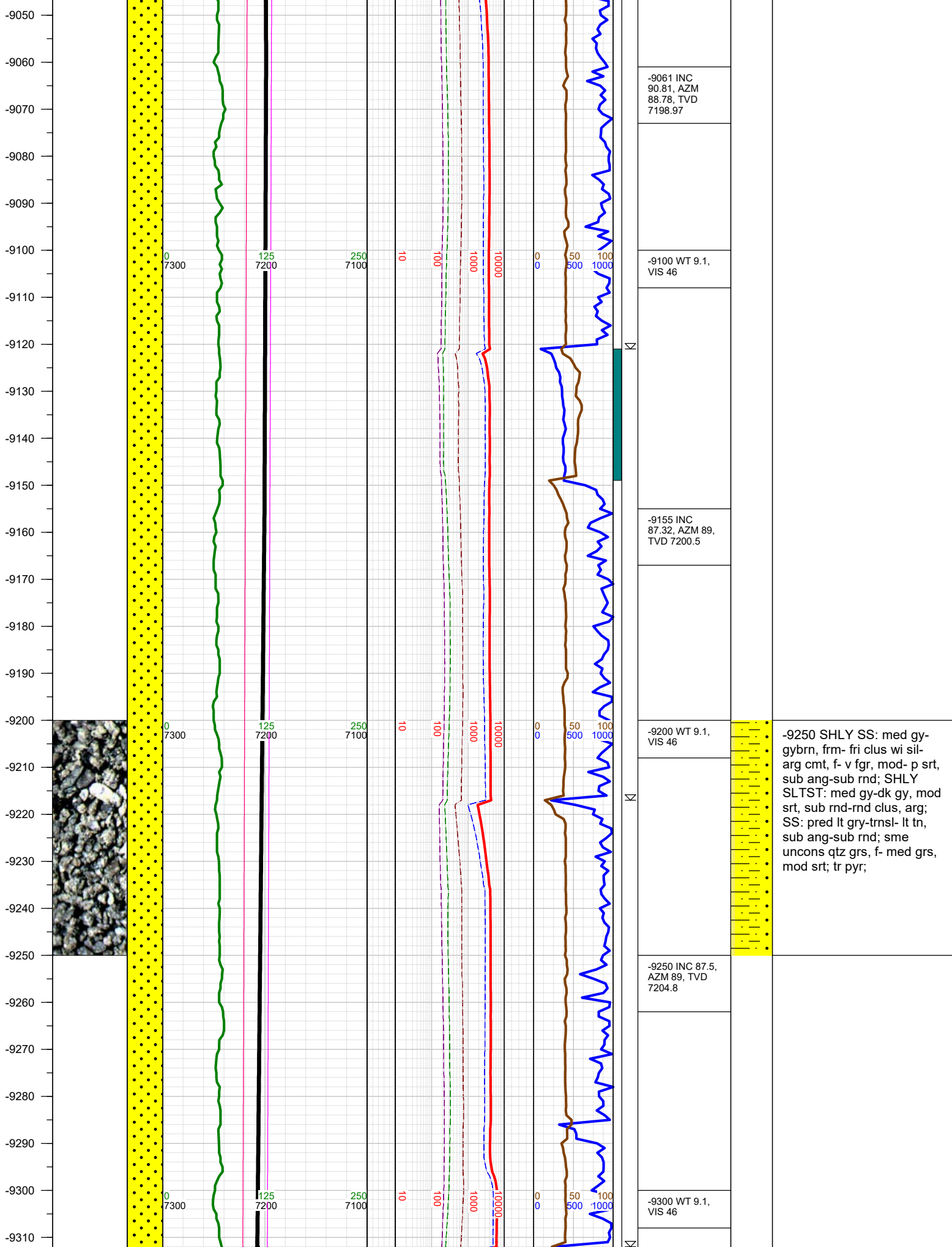


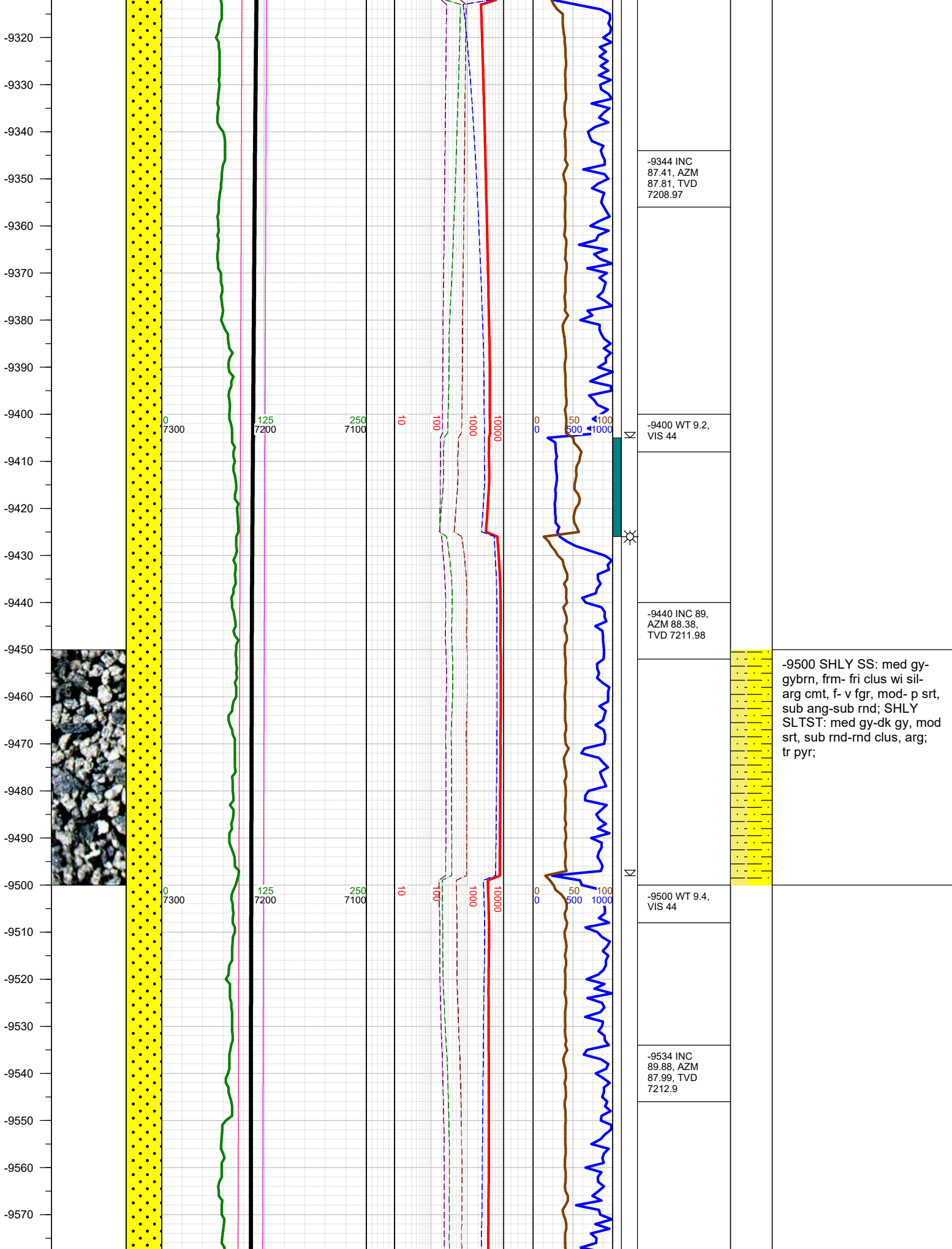


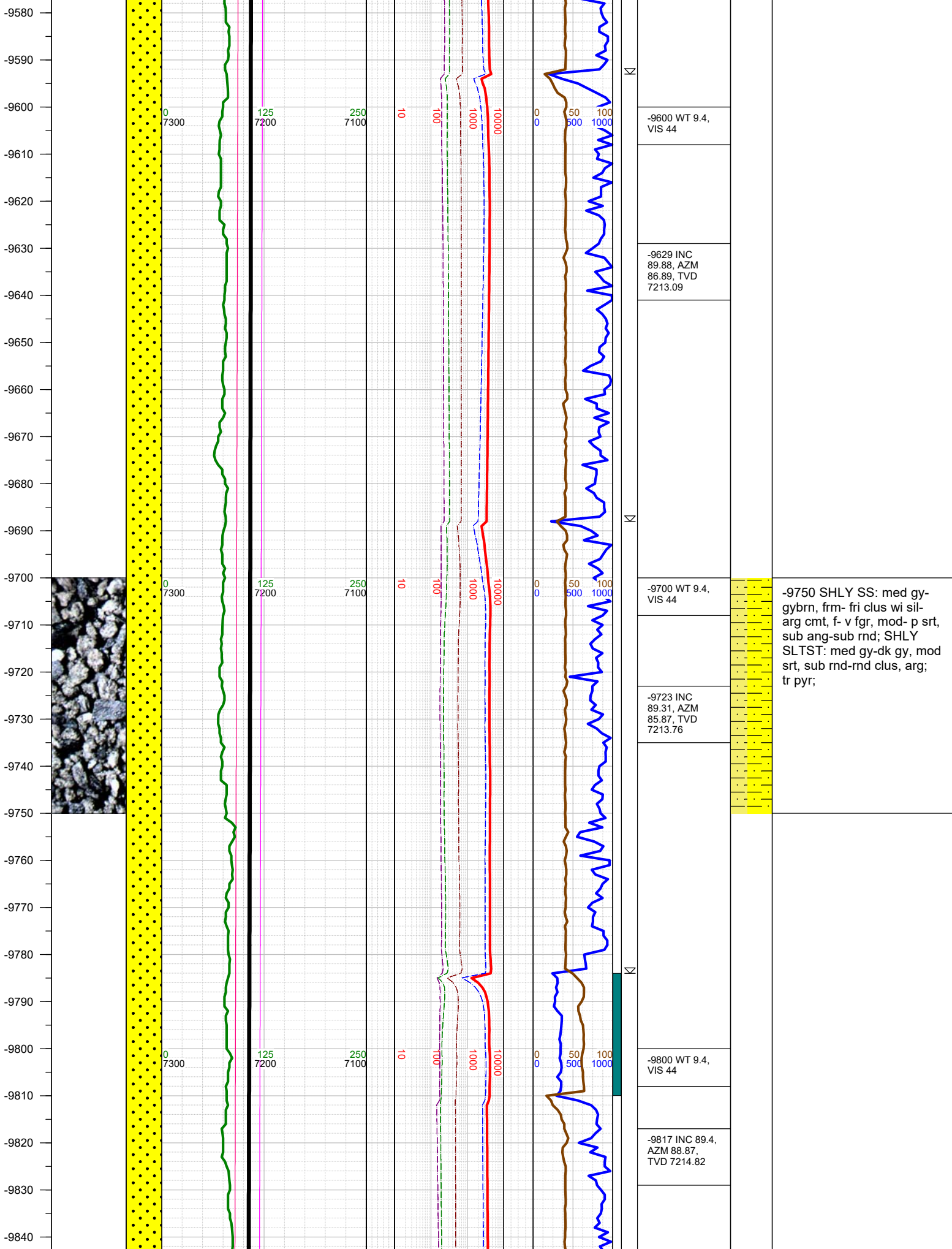




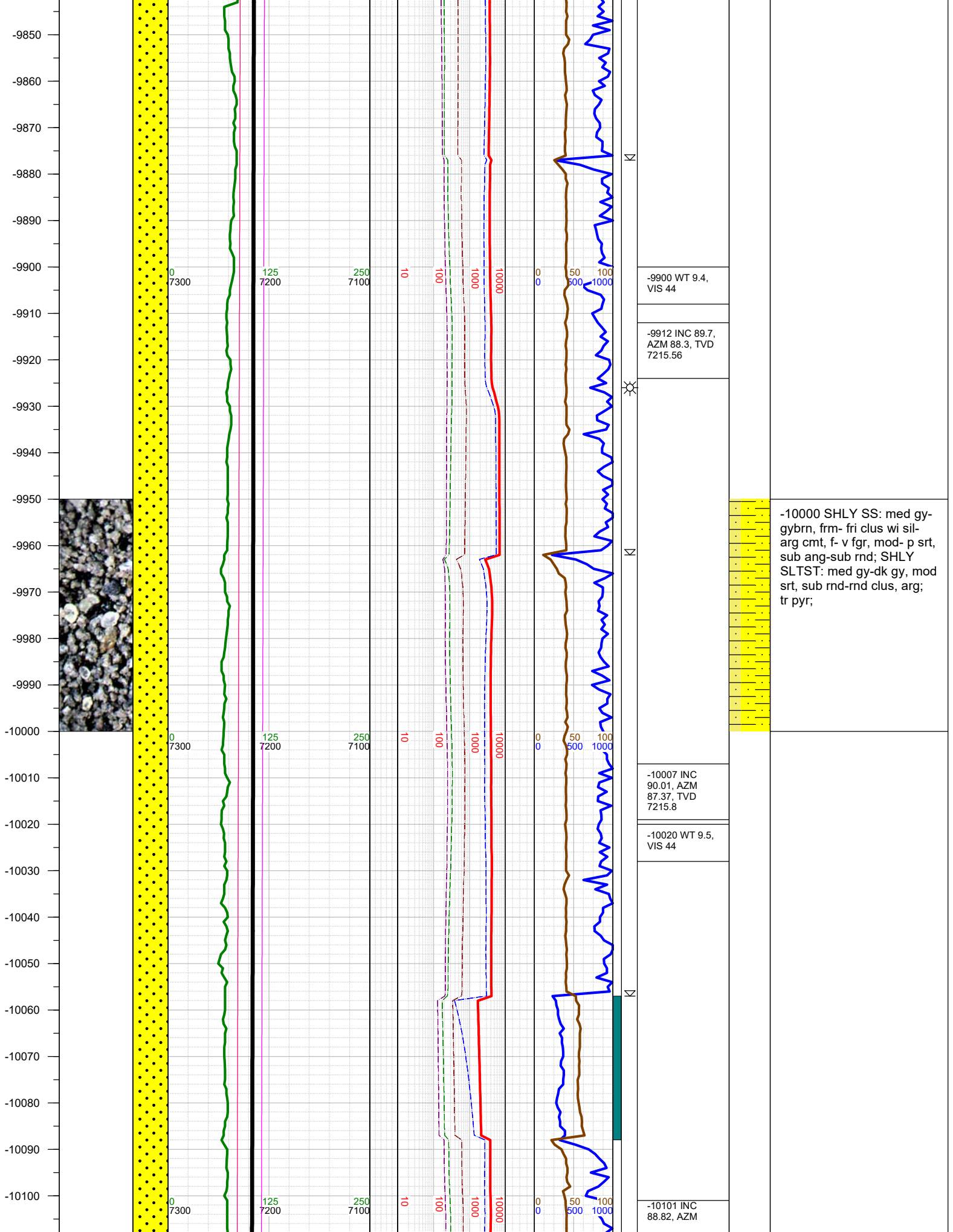
AZM 91.07, TVD 7199.72	
-8800 WT 9.1, VIS 46	
-8872 INC 90.01, AZM 89.88, TVD 7199.96	
-8900 WT 9.1, VIS 46	
-8966 INC 90.19, AZM 88.78, TVD 7199.8	<p>-9000 SHLY SS: med gy- gybrn, frm- fri clus wi sil- arg cmt, f- v fgr, mod- p srt, sub ang-sub rnd; SHLY SLTST: med gy-dk gy, mod srt, sub rnd-rnd clus, arg; tr pyr; tr fos frags;</p>
-9000 WT 9.1, VIS 46	

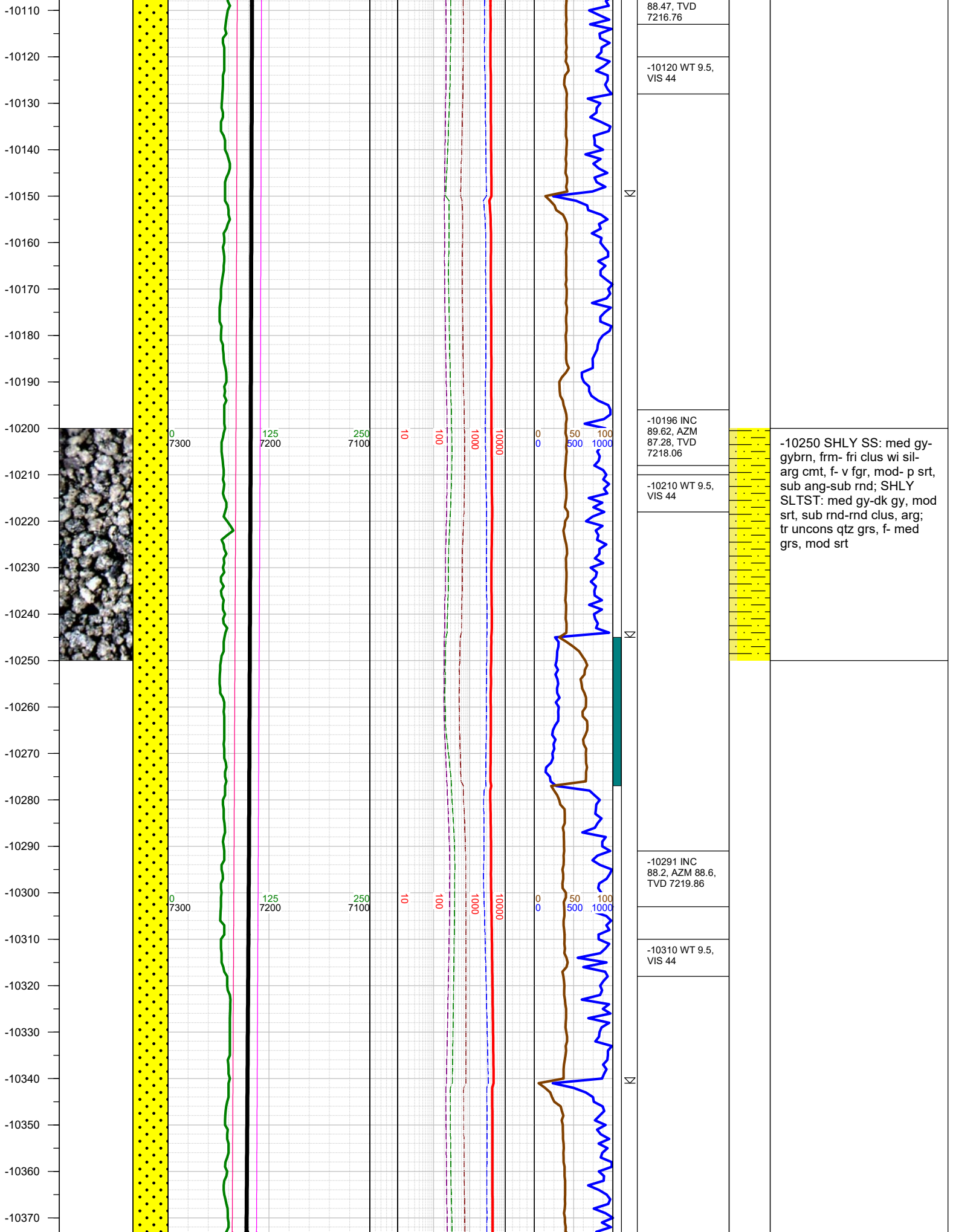


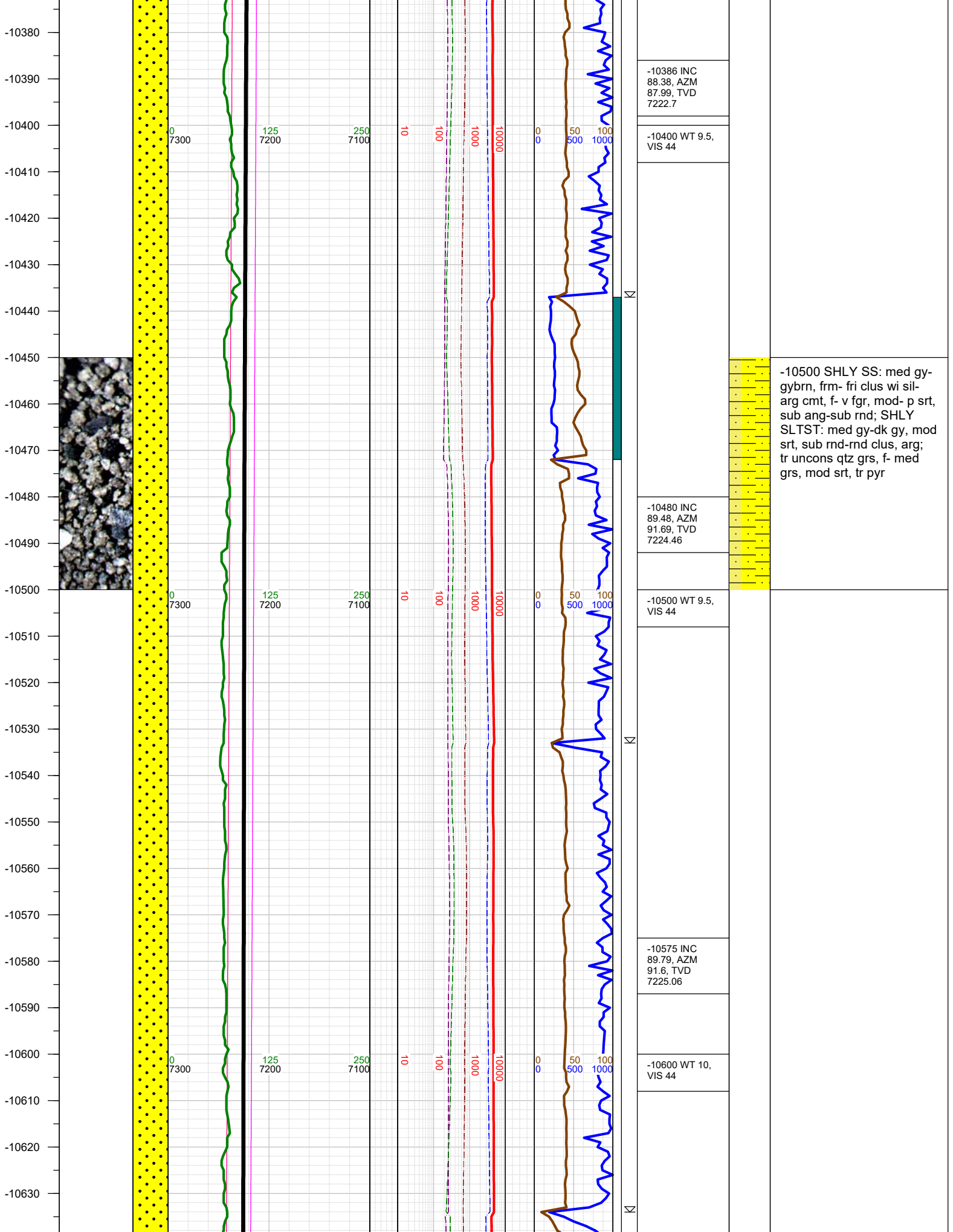


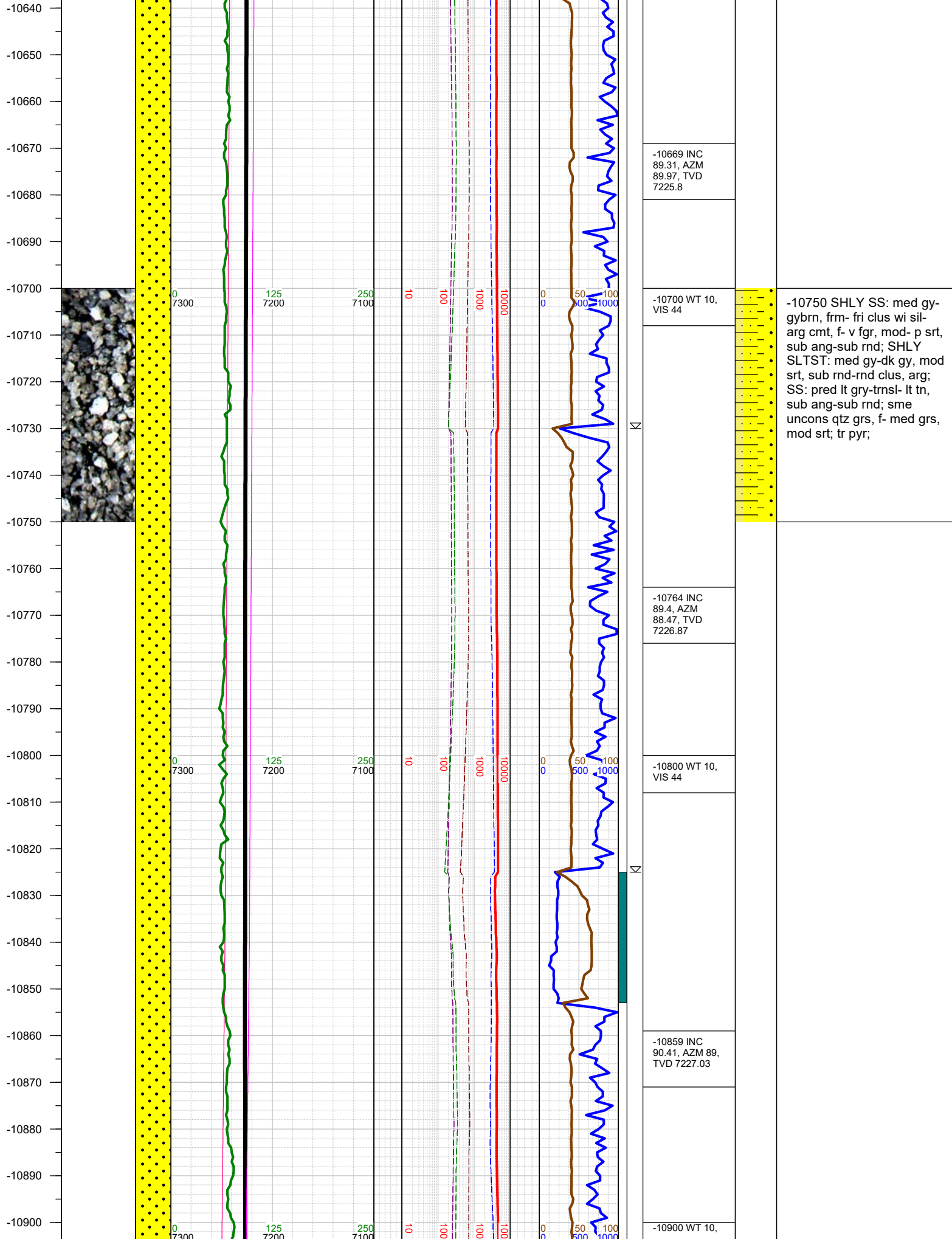


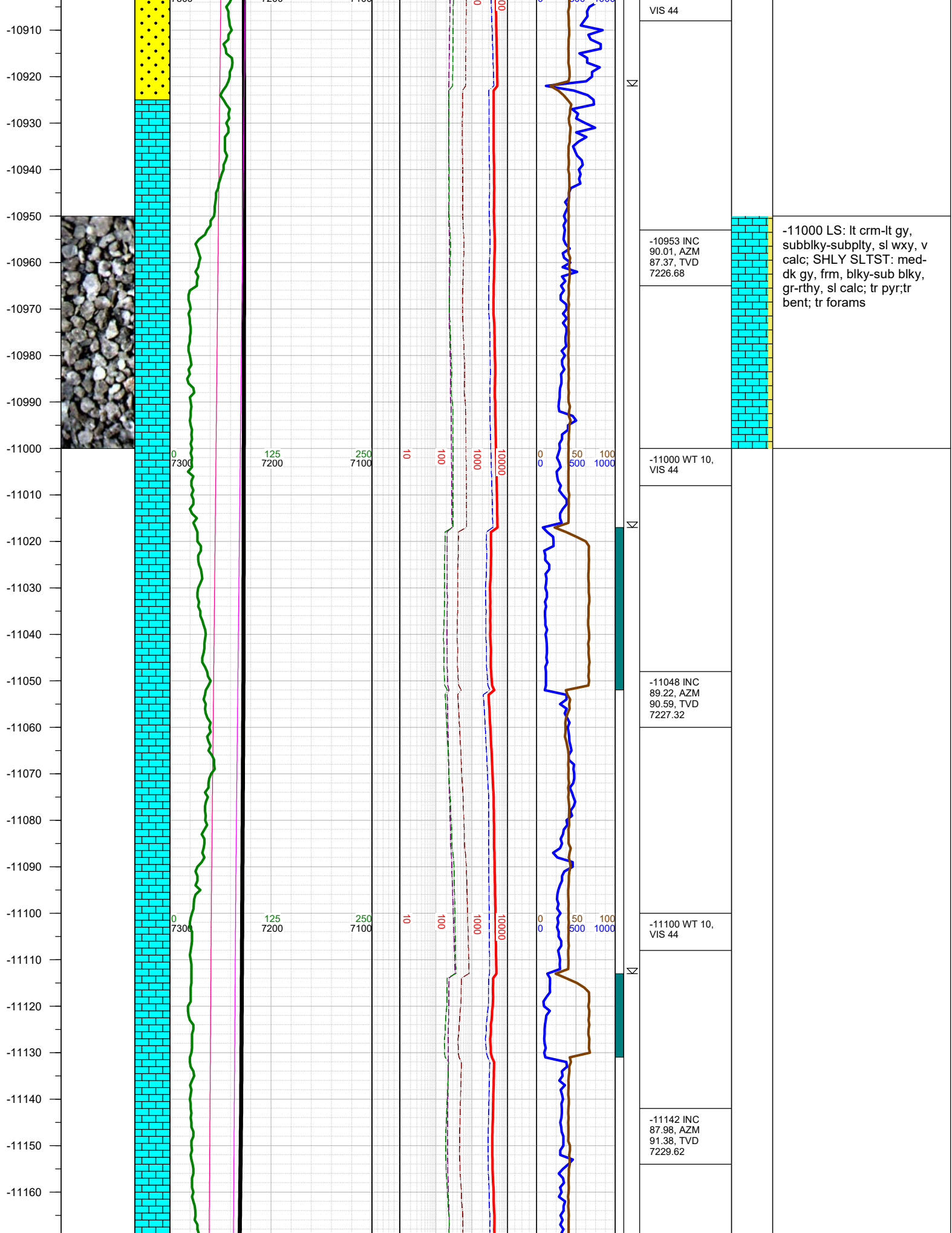
-9750 SHLY SS: med gy-brn, frm- fri clus wi sil-arg cmt, f- v fgr, mod- p srt, sub ang-sub rnd; SHLY SLTST: med gy-dk gy, mod srt, sub rnd-rnd clus, arg; tr pyr;

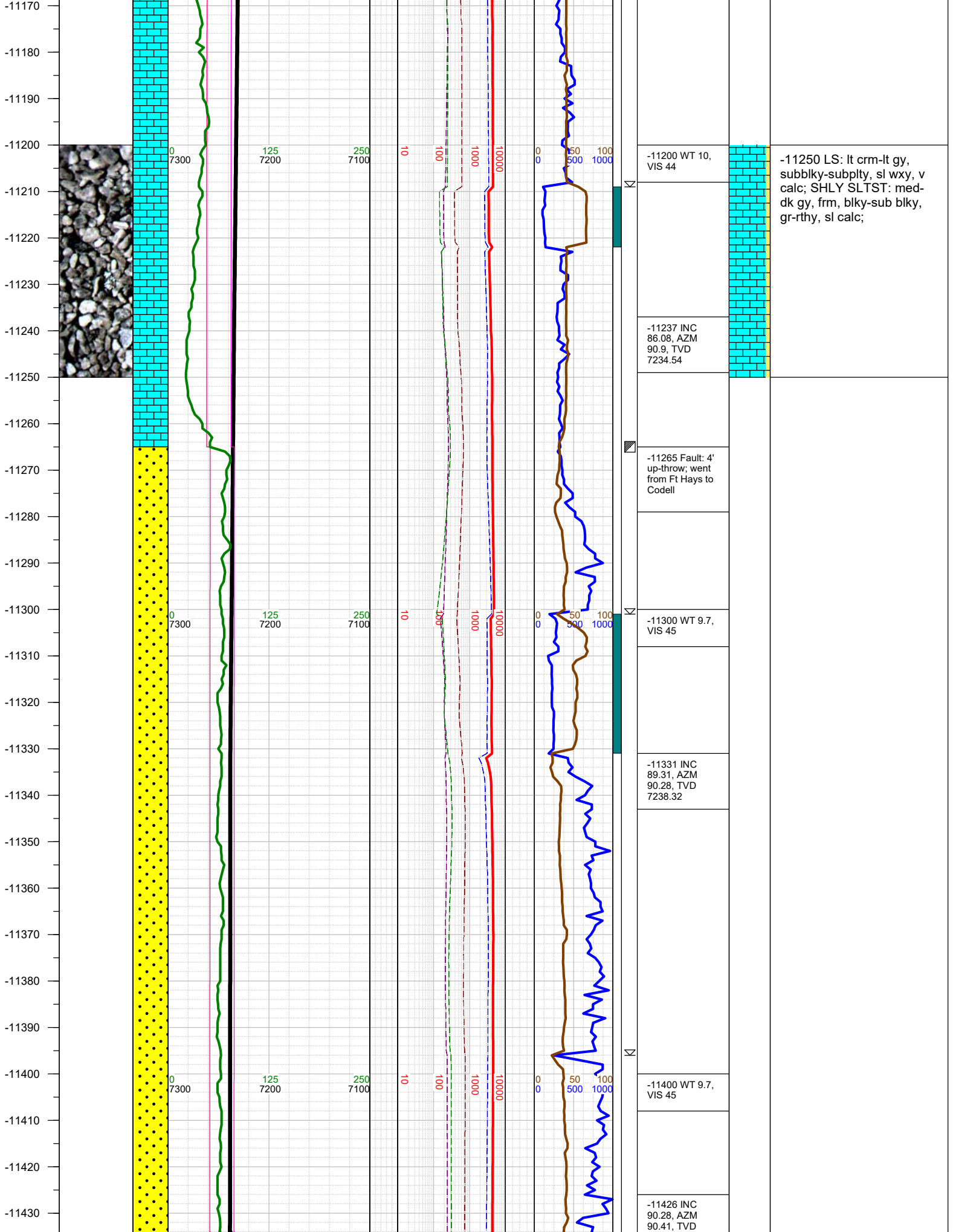






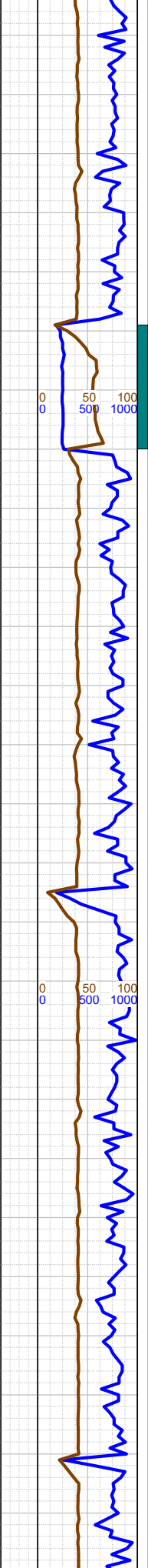
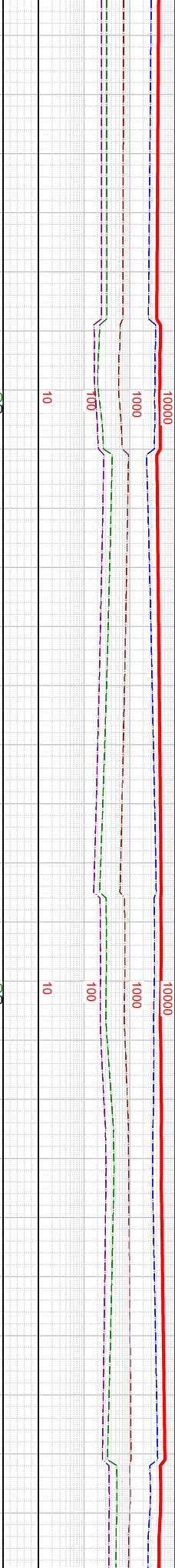
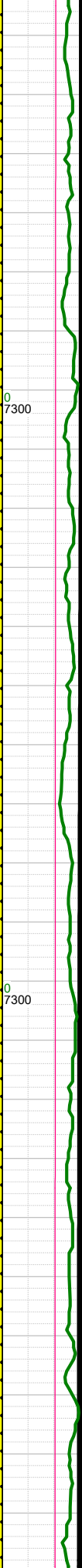
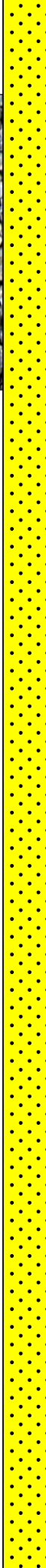
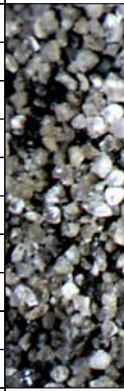






-11250 LS: lt crm-lt gy, subblky-subplty, sl wxy, v calc; SHLY SLTST: med-dk gy, frm, blky-sub blky, gr-rthy, sl calc;

-11440
-11450
-11460
-11470
-11480
-11490
-11500
-11510
-11520
-11530
-11540
-11550
-11560
-11570
-11580
-11590
-11600
-11610
-11620
-11630
-11640
-11650
-11660
-11670
-11680
-11690



-11500 SHLY SS: med gy-gybrn, frm- fri clus wi sil-arg cmt, f- v fgr, mod- p srt, sub ang-sub rnd; SS: pred lt gry-trnsl- lt tn, sub ang-sub rnd; sme uncons qtz grs, f- med grs, mod srt; SHLY SLTST: med gy-dk gy, mod srt, sub rnd-rnd clus, arg; tr forams; tr pyr; tr fos frags

7238.66

-11500 WT 9.7, VIS 45

-11521 INC
89.22, AZM
89.88, TVD
7239.07

-11600 WT 9.7, VIS 45

-11615 INC
89.48, AZM
88.47, TVD
7240.14



