

Inspection Photos

11/1/2017

Operator: ST CROIX OPERATING INC - 81490

Location ID: 452312

Inspection Doc. Number: 682502763

Washington County, CO

Aaron Trujillo
NE Reclamation Specialist
COGCC

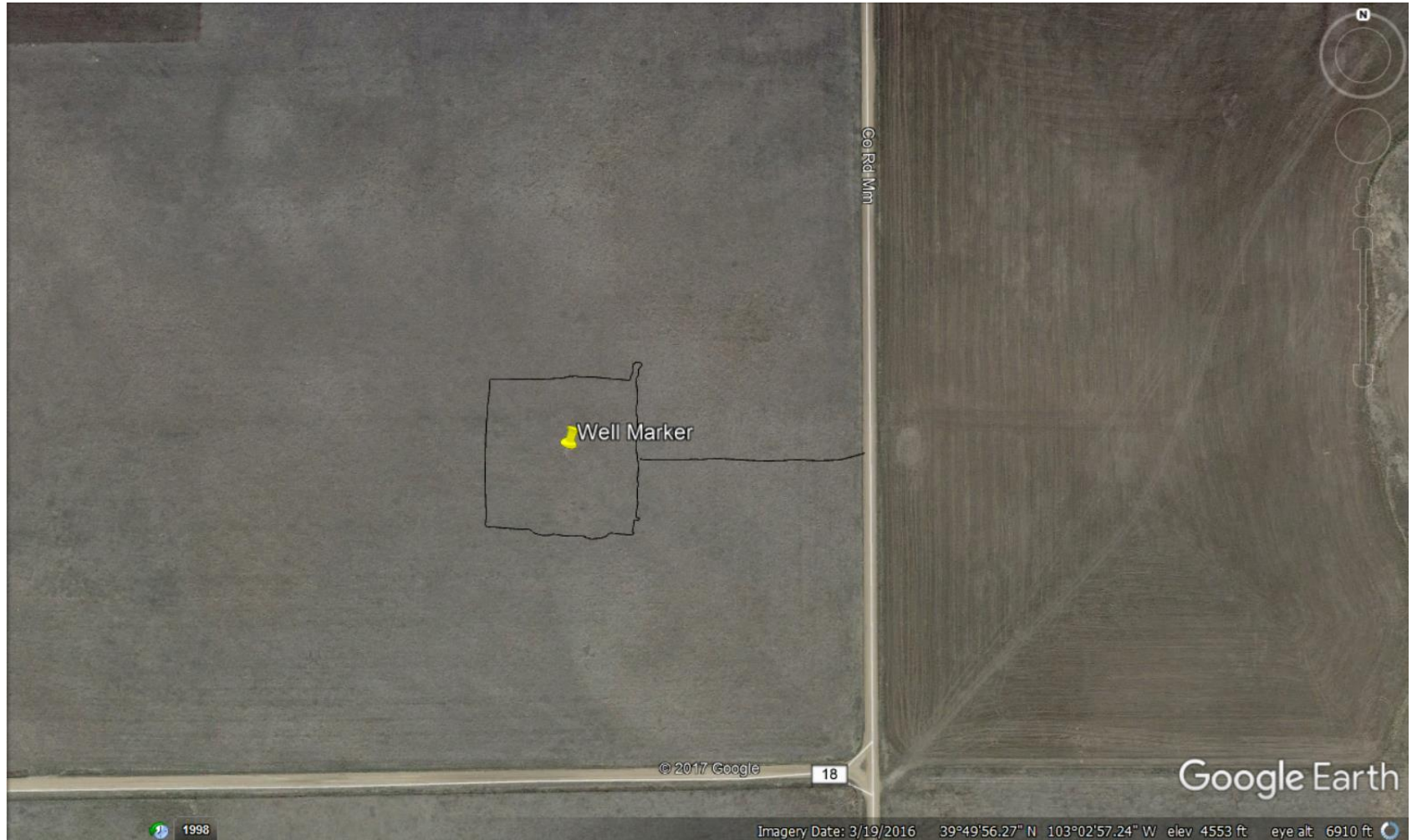


Photo 1: Aerial imagery showing current area of the construction site and disturbance. Current size of disturbance is ~2 acres

Inspection Photos
Operator: ST CROIX OPERATING INC - 81490
Location ID: 452312



Photo 2: Photo taken from the northeast area of the location, facing south. Photo shows equipment has been brought onto the location. Photo shows that, with exception to a pit on the south end, no topsoil salvage on the location has occurred. All equipment and materials have been placed directly on the surface of the soil.



Photo 3: Photo taken from the northeast area of the location, facing west. See comments under photo 2.

Inspection Photos
Operator: ST CROIX OPERATING INC - 81490
Location ID: 452312



Photo 4: Photo taken from the northeast area of the location. Photo shows barrel placed directly upon topsoil. This is poor good-housekeeping and materials management.



Photo 5: Photo taken from the northeast area of the location. Photo shows buckets placed directly upon topsoil. This is poor good-housekeeping and materials management.

Inspection Photos
Operator: ST CROIX OPERATING INC - 81490
Location ID: 452312



Photo 6: Photo taken from the east end of the location. Photo shows equipment has been brought onto the location. Photo shows that, with exception to a pit on the south end, no topsoil salvage on the location has occurred. All equipment and materials have been placed directly on the surface of the soil.



Photo 7: Photo taken from the northwest end of the location, facing east. See comments under photo 6.

Inspection Photos
Operator: ST CROIX OPERATING INC - 81490
Location ID: 452312



Photo 8: Photo taken from the northwest end of the location, facing southeast. See comments under photo 6.



Photo 9: Photo taken from the northwest end of the location, facing south. See comments under photo 6.



Photo 10: Photo taken from the center of the current location. Photo shows vegetation is a rangeland composed of Blue and Sideoats Grama, Western Wheat, Sand Dropseed, etc... Photo also shows that, with exception to a pit on the south end, no topsoil salvage on the location has occurred.



Photo 11: Photo taken from the west end of the pit, facing east. Photo shows topsoil pile has not been stabilized with good engineering practices. This is not protective of soils in accordance to 1002.c. Photo also shows that surface roughening appears to have been implemented throughout the site. Surface roughening is a temporary BMP that should be used in conjunction with other BMPs. Additional BMPs will be required.



Photo 12: Photo taken from the west end of the pit, facing south. See comments under photo 11.

Inspection Photos
Operator: ST CROIX OPERATING INC - 81490
Location ID: 452312



Photo 13: Photo taken from the southwest area of the location, facing north. Photo shows equipment has been brought onto the location. Photo shows that, with exception to a pit on the south end, no topsoil salvage on the location has occurred. All equipment and materials have been placed directly on the surface of the soil.



Photo 14: Photo taken from the southwest area of the location, facing east. See comments under photo 13.



Photo 15: Photo taken from the west end of the pit. Photo shows soil horizons do not appear to be stored separately from one another per 1002.b.



Photo 16: Photo taken from the south end of the pit, facing east. Photo shows topsoil pile has not been stabilized with good engineering practices. Photo also shows that surface roughening appears to have been implemented throughout the site. Surface roughening is a temporary BMP that should be used in conjunction with other BMPs. Additional BMPs will be required.

Inspection Photos
Operator: ST CROIX OPERATING INC - 81490
Location ID: 452312



Photo 17: Photo taken from the southeast area of the location, facing west. Photo shows equipment has been brought onto the location. Photo shows that, with exception to a pit on the south end, no topsoil salvage on the location has occurred. All equipment and materials have been placed directly on the surface of the soil.



Photo 18: Photo taken from the southeast area of the location, facing north. See comments under photo 17.



Photo 19: Photo taken from the southeast end of the location, facing south. Photo shows equipment and porta-johns on site. Portable toilets do not appear to have been anchored down per good engineering practices.



Photo 20: Photo taken from the east end of the pit. Photo shows soil horizons to not appear to be stored separately from one another per 1002.b.

Inspection Photos
Operator: ST CROIX OPERATING INC - 81490
Location ID: 452312



Photo 21: Photo taken from the north end of the location, facing west. Photo shows pit that has been constructed.



Photo 22: Photo taken from within pit seen in photo 21. Photo shows topsoil and soil horizons at the location. 6 foot measuring stick for reference.



Photo 23: Photo taken from within pit seen in photo 21. Photo shows topsoil layer. Topsoil appears to be ~ 2 feet in depth.



Photo 24: Photo taken from within pit seen in photo 21. Photo shows topsoil layer. Topsoil appears to be ~ 2 feet in depth.

Inspection Photos
Operator: ST CROIX OPERATING INC - 81490
Location ID: 452312



Photo 25: Photo taken from the within the pit, facing west. Photo shows soil horizons to not appear to be stored separately from one another per 1002.b.



Photo 26: Photo taken from the within the pit, facing east. Photo shows soil horizons to not appear to be stored separately from one another per 1002.b.

Inspection Photos
Operator: ST CROIX OPERATING INC - 81490
Location ID: 452312



Photo 27: Photo taken from the east end of the location, facing south. Photo shows equipment has been brought onto the location. Photo shows that, with exception to a pit on the south end, no topsoil salvage on the location has occurred. All equipment and materials have been placed directly on the surface of the soil.



Photo 28: Photo taken from the location, facing west. Photo shows well marker. Photo also shows that no topsoil salvage has occurred at the well marker.

Inspection Photos
Operator: ST CROIX OPERATING INC - 81490
Location ID: 452312



Photo 29: Photo taken from the east end of the location, facing east. Photo shows access road leading to the location. Photo shows no topsoil has been salvaged from the access road. Operator appears to have traveled over the surface to access location.



Photo 30: Photo taken from the country road, east of the location, facing west. Photo shows access road leading to the location. Photo shows no topsoil has been salvaged from the access road. Operator appears to have traveled over the surface to access location.