

T7N, R81W, 6th P.M.

SandRidge Exploration & Production, LLC

Well location, Beaver Creek 0881 1-3H34 located as shown in the NW1/4NE1/4 of Section 10, T7N, R81W, 6th P.M., Jackson County, Colorado.

BASIS OF BEARINGS:

US STATE PLANE 1983
CO NORTH 0501 GRID

BASIS OF ELEVATION

SPOT ELEVATION AT THE NW CORNER OF SECTION 10, T7N, R81W, 6TH PM, TAKEN FROM THE COALMONT QUADRANGLE, USGS 7.5 MIN QUAD (TOPOGRAPHIC MAP) WITH SAID ELEVATION MARKED AS BEING 8251 FEET.

LEGEND

90° SYMBOL
FOUND CORNER
PROPOSED WELL
PROPOSED BHL/LPL



GRAPHIC SCALE 1"=1000'



THIS IS TO CERTIFY THAT THE ABOVE PLAT WAS PREPARED FROM FIELD NOTES OF ACTUAL SURVEYS MADE BY ME OR UNDER MY SUPERVISION AND THAT THE SAME ARE TRUE AND CORRECT TO THE BEST OF MY KNOWLEDGE AND BELIEF.



NORTH PARK ENGINEERING & CONSULTING, INC.

P.O. BOX 395
WALDEN, CO 80480
(970) 723-3725

DATE OF FIELD WORK: SEP 15, 2016 DRAWING COMPLETION: June 23, 2017

SURVEYED BY: ADL DRAWN BY: ADL/RRM CHECKED BY: RRM

N89°52'50"W 2664.04' (Meas.) S89°51'07"E 2660.16' (Meas.)

GLO Brass
Cap 1940
N=1462805.94
E=2727170.24

GLO Brass
Cap 1940
N=1462793.79
E=2729834.15

GLO Brass
Cap 1940
N=1462786.92
E=2732494.29

Beaver Creek 0881 1-3H34

Surface Location Elev.
Ungraded Ground= 8250'
388 FNL 2524 FEL
N=1462405.44
E=2729967.12

Top of Niobrara
384 FNL 798 FEL

GLO Brass
Cap 1940
N=1460102.50
E=2727143.57

NPE&C
PLS 38084
N=1460089.87
E=2732474.03

GLO Brass
Cap 1940
N=1457466.89
E=2727190.71

GLO Brass
Cap 1940
N=1457436.11
E=2729778.43

GLO Brass
Cap 1940
N=1457392.82
E=2732453.76

S89°19'09"E 2587.90' (Meas.)

S89°04'23"E 2675.68' (Meas.)

N00°25'50"E 2697.12' (Meas.)

N00°25'50"E 2697.12' (Meas.)

N00°33'50"E 2696.97' (Meas.)

N01°01'29"W 2636.07' (Meas.)

NAD 83 (TOP OF FORMATION)

LATITUDE=40.598688°N
LONGITUDE=106.466215°W

NAD 83 (SURFACE LOCATION)

LATITUDE=40.59863661°N
LONGITUDE=106.4724301°W PDOP = 1.446

NAD 83 (LEASE ENTRY)

LATITUDE=40.610864°N
LONGITUDE=106.464613°W

NAD 83 (TARGET BOTTOM HOLE)

LATITUDE=40.62862641°N
LONGITUDE=106.4642064°W

NAD 83 (LANDING POINT LOCATION)

LATITUDE=40.600276°N
LONGITUDE=106.464462°W

T7N, R81W, 6th P.M.

SandRidge Exploration & Production, LLC

Landing Point location, Beaver Creek 0881 1-3H34 located as shown in the SE1/4SE1/4 of Section 3, T7N, R81W, 6th P.M., Jackson County, Colorado.

BASIS OF BEARINGS:

US STATE PLANE 1983
CO NORTH 0501 GRID

BASIS OF ELEVATION

SPOT ELEVATION AT THE NW CORNER OF SECTION 10, T7N, R81W, 6TH PM, TAKEN FROM THE COALMONT QUADRANGLE, USGS 7.5 MIN QUAD (TOPOGRAPHIC MAP) WITH SAID ELEVATION MARKED AS BEING 8251 FEET.

LEGEND

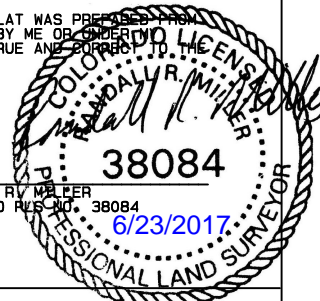
90° SYMBOL
FOUND CORNER
PROPOSED WELL
PROPOSED BHL/LPL



GRAPHIC SCALE 1"=1000'



THIS IS TO CERTIFY THAT THE ABOVE PLAT WAS PREPARED FROM FIELD NOTES OF ACTUAL SURVEYS MADE BY ME OR UNDER MY SUPERVISION AND THAT THE SAME ARE TRUE AND CORRECT TO THE BEST OF MY KNOWLEDGE AND BELIEF.



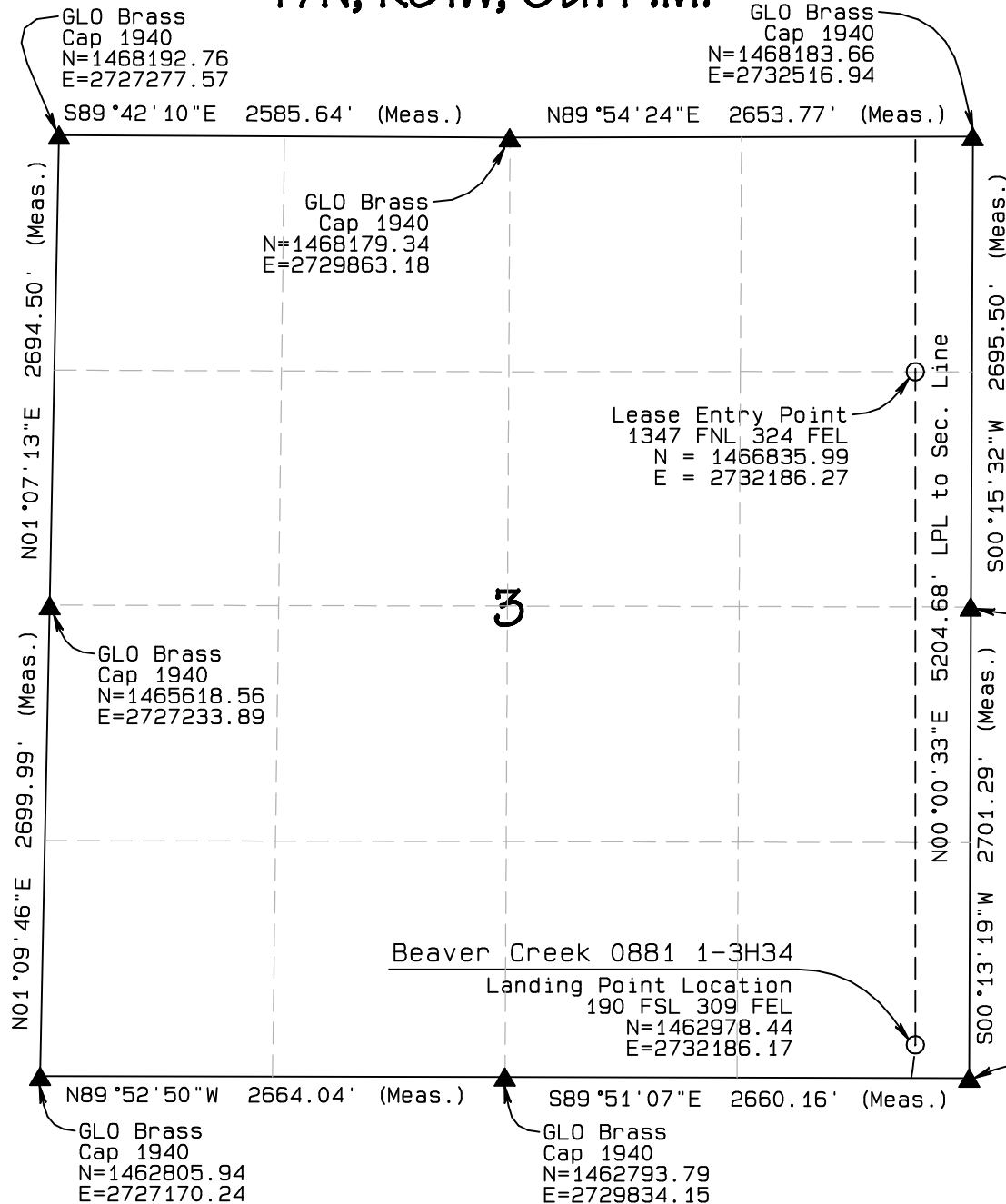
RANDALL R. MILLER
COLORADO REG. NO. 38084

NORTH PARK ENGINEERING & CONSULTING, INC.

P.O. BOX 395
WALDEN, CO 80480
(970) 723-3725

DATE OF FIELD WORK: SEP 15, 2016 DRAWING COMPLETION: June 23, 2017

SURVEYED BY: ADL DRAWN BY: ADL/RRM CHECKED BY: RRM



NAD 83 (TOP OF FORMATION)

LATITUDE=40.598688°N
LONGITUDE=106.466215°W

NAD 83 (SURFACE LOCATION)

LATITUDE=40.59863661°N
LONGITUDE=106.4724301°W PDOP = 1.446

NAD 83 (LEASE ENTRY)

LATITUDE=40.610864°N
LONGITUDE=106.464613°W

NAD 83 (TARGET BOTTOM HOLE)

LATITUDE=40.62862641°N
LONGITUDE=106.4642064°W

NAD 83 (LANDING POINT LOCATION)

LATITUDE=40.600276°N
LONGITUDE=106.464462°W

T8N, R81W, 6th P.M.

SandRidge Exploration & Production, LLC

Bottom Hole location, Beaver Creek 0881 1-3H34 located as shown in the NE1/4NE1/4 of Section 34, T8N, R81W, 6th P.M., Jackson County, Colorado.

BASIS OF BEARINGS:

US STATE PLANE 1983
CO NORTH 0501 GRID

BASIS OF ELEVATION

SPOT ELEVATION AT THE NW CORNER OF SECTION 10, T7N, R81W, 6TH PM, TAKEN FROM THE COALMONT QUADRANGLE, USGS 7.5 MIN QUAD (TOPOGRAPHIC MAP) WITH SAID ELEVATION MARKED AS BEING 8251 FEET.

LEGEND

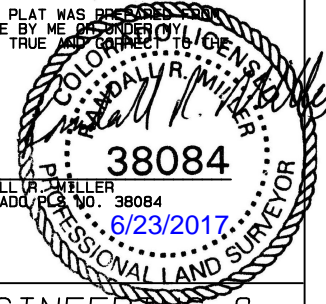
90° SYMBOL
FOUND CORNER
PROPOSED WELL
PROPOSED BHL/LPL



GRAPHIC SCALE 1"=1000'



THIS IS TO CERTIFY THAT THE ABOVE PLAT WAS PREPARED FROM FIELD NOTES OF ACTUAL SURVEYS MADE BY ME OR UNDER MY SUPERVISION AND THAT THE SAME ARE TRUE AND CORRECT TO THE BEST OF MY KNOWLEDGE AND BELIEF.



RANDALL R. MILLER
COLORADO P.L.S. NO. 38084

38084

6/23/2017

NORTH PARK ENGINEERING & CONSULTING, INC.

P.O. BOX 395
WALDEN, CO 80480
(970) 723-3725

DATE OF FIELD WORK: SEP 15, 2016 DRAWING COMPLETION: June 23, 2017

SURVEYED BY: ADL DRAWN BY: ADL/RRM CHECKED BY: RRM

GLO Brass Cap 1940
N=1473450.02
E=2730039.55

GLO Brass Cap 1940
N=1473399.29
E=2732702.97

N88°55'01"W 2664.52' (Meas.)

N88°54'32"W 2663.91' (Meas.)

GLO Brass Cap 1940
N=1473500.38
E=2727375.51

Beaver Creek 0881 1-3H34

Target Bottom Hole
100 FNL 330 FEL
N=1473305.64
E=2732369.47

GLO Brass Cap 1940
N=1470847.95
E=2727327.04

GLO Brass Cap 1940
N=1470657.34
E=2732624.21

GLO Brass Cap 1946
N=1468179.34
E=2729863.18

GLO Brass Cap 1940
N=1468192.76
E=2727277.57

GLO Brass Cap 1940
N=1468183.66
E=2732516.94

S89°42'10"E 2585.64' (Meas.)

N89°54'24"E 2653.77' (Meas.)

NAD 83 (TOP OF FORMATION)

LATITUDE=40.598688°N
LONGITUDE=106.466215°W

NAD 83 (SURFACE LOCATION)

LATITUDE=40.59863661°N
LONGITUDE=106.4724301°W PDOP = 1.446

NAD 83 (LEASE ENTRY)

LATITUDE=40.610864°N
LONGITUDE=106.464613°W

NAD 83 (TARGET BOTTOM HOLE)

LATITUDE=40.62862641°N
LONGITUDE=106.4642064°W

NAD 83 (LANDING POINT LOCATION)

LATITUDE=40.600276°N
LONGITUDE=106.464462°W