

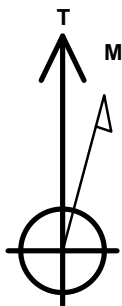
Clear Creek Resource Partners

Well Name: **Salt Ranch Fee 501-1807H**

Surface Location: Salt Ranch Fee 1807H East Pad Sec.18-T11N-R64W
 North American Datum 1983 , US State Plane 1983, Colorado Northern Zone
 Ground Elevation: 5603.0
 +N/-S +E/-W Northing Easting Latitude Longitude Slot
 0.0 0.0 1577347.89 3253100.54 40.914601 -104.584267
 Original Well Elev WELL @ 5626.0ft (Original Well Elev)

WELLBORE TARGET DETAILS

Name	TVD	+N/-S	+E/-W	Shape
SHL 364'FSL, 1008'FEL, SEC.18	1.0	0.0	0.0	Point
BHL 300'FNL, 440'FEL, SEC.7	8188.0	9860.7	499.0	Point
WP (501-1807H)	8204.0	4918.7	926.3	Point
LPL 735'FSL, 440'FEL, SEC.18	8218.0	387.3	597.3	Point



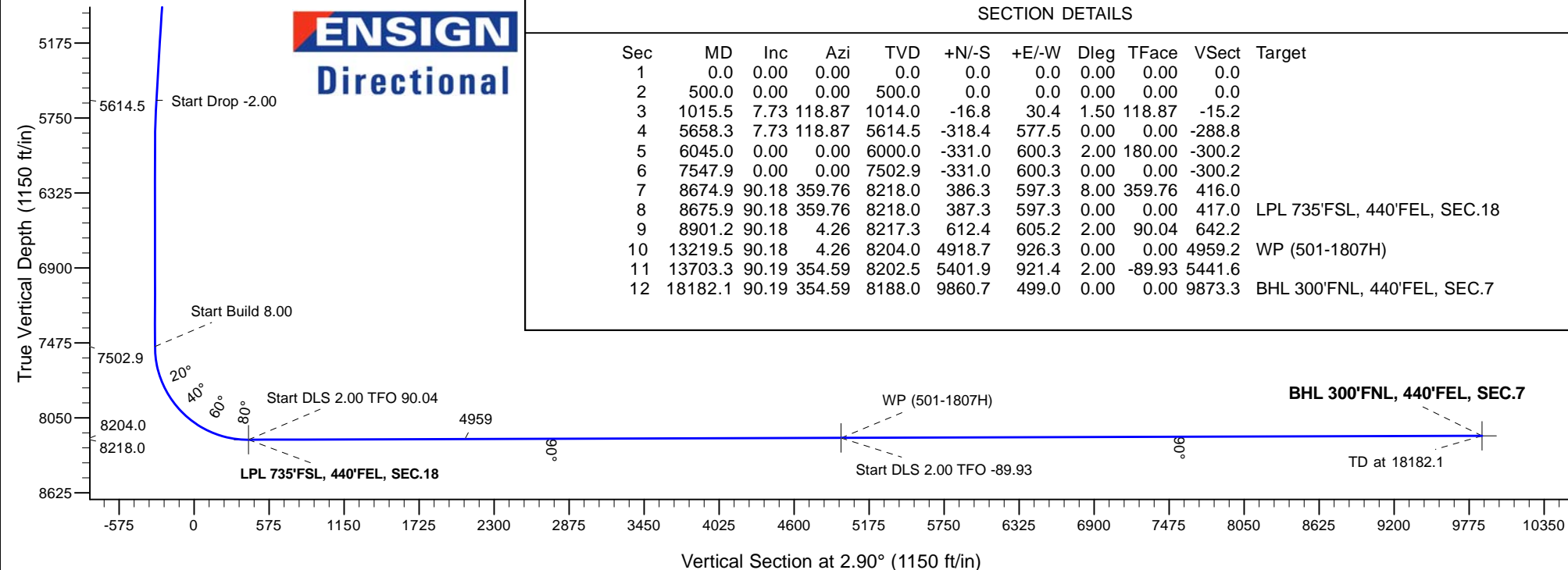
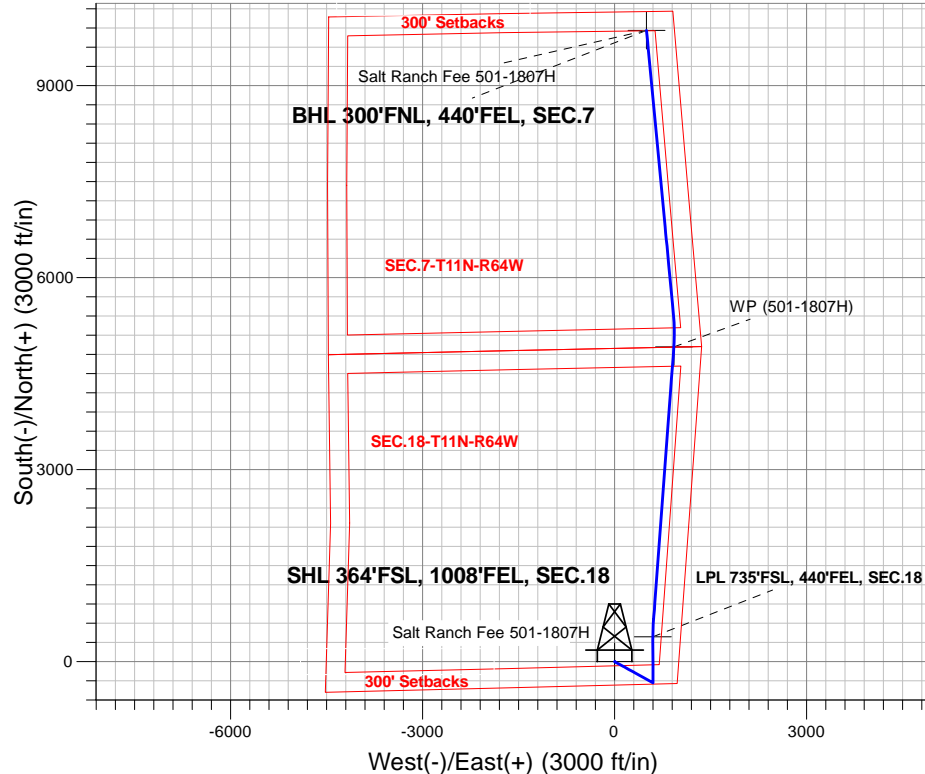
Azimuths to True North
 Magnetic North: 7.95°

Magnetic Field
 Strength: 52743.1snT
 Dip Angle: 67.27°
 Date: 10/12/2017
 Model: IGRF2010

Salt Ranch Fee 1807H East Pad Sec.18-T11N-R64W
 Salt Ranch Fee 501-1807H
 Plan #1 (9-26-17)
 10:50, October 12 2017

ANNOTATIONS

TVD	MD	Annotation
500.0	500.0	KOP - Start Build 1.50
5614.5	5658.3	Start Drop -2.00
7502.9	7547.9	Start Build 8.00
8218.0	8675.9	Start DLS 2.00 TFO 90.04
8204.0	13219.5	Start DLS 2.00 TFO -89.93
8188.0	18182.1	TD at 18182.1





Clear Creek Resource Partners

SEC.18-T11N-R64W

Salt Ranch Fee 1807H East Pad Sec.18-T11N-R64W

Salt Ranch Fee 501-1807H

Wellbore #1

Plan: Plan #1 (9-26-17)

Standard Planning Report

12 October, 2017

Database:	US_EDM	Local Co-ordinate Reference:	Well Salt Ranch Fee 501-1807H
Company:	Clear Creek Resource Partners	TVD Reference:	WELL @ 5626.0ft (Original Well Elev)
Project:	SEC.18-T11N-R64W	MD Reference:	WELL @ 5626.0ft (Original Well Elev)
Site:	Salt Ranch Fee 1807H East Pad Sec.18-T11N-R64W	North Reference:	True
Well:	Salt Ranch Fee 501-1807H	Survey Calculation Method:	Minimum Curvature
Wellbore:	Wellbore #1		
Design:	Plan #1 (9-26-17)		

Project	SEC.18-T11N-R64W, Weld County, CO		
Map System:	US State Plane 1983	System Datum:	Mean Sea Level
Geo Datum:	North American Datum 1983		Using Well Reference Point
Map Zone:	Colorado Northern Zone		Using geodetic scale factor

Site	Salt Ranch Fee 1807H East Pad Sec.18-T11N-R64W				
Site Position:		Northing:	1,577,348.20 usft	Latitude:	40.914601
From:	Lat/Long	Easting:	3,253,130.67 usft	Longitude:	-104.584158
Position Uncertainty:	0.0 ft	Slot Radius:	13-3/16 "	Grid Convergence:	0.59

Well	Salt Ranch Fee 501-1807H					
Well Position	+N/-S	0.0 ft	Northing:	1,577,347.89 usft	Latitude:	40.914601
	+E/-W	-30.1 ft	Easting:	3,253,100.54 usft	Longitude:	-104.584267
Position Uncertainty		0.0 ft	Wellhead Elevation:	0.0 ft	Ground Level:	5,603.0 ft

Wellbore	Wellbore #1				
Magnetics	Model Name	Sample Date	Declination (°)	Dip Angle (°)	Field Strength (nT)
	IGRF2010	10/12/2017	7.95	67.27	52,743

Design	Plan #1 (9-26-17)			
Audit Notes:				
Version:	Phase:	PROTOTYPE	Tie On Depth:	0.0
Vertical Section:	Depth From (TVD) (ft)	+N/-S (ft)	+E/-W (ft)	Direction (°)
	0.0	0.0	0.0	2.90

Plan Sections										
Measured Depth (ft)	Inclination (°)	Azimuth (°)	Vertical Depth (ft)	+N/-S (ft)	+E/-W (ft)	Dogleg Rate (°/100usft)	Build Rate (°/100usft)	Turn Rate (°/100usft)	TFO (°)	Target
0.0	0.00	0.00	0.0	0.0	0.0	0.00	0.00	0.00	0.00	
500.0	0.00	0.00	500.0	0.0	0.0	0.00	0.00	0.00	0.00	
1,015.5	7.73	118.87	1,014.0	-16.8	30.4	1.50	1.50	0.00	118.87	
5,658.3	7.73	118.87	5,614.5	-318.4	577.5	0.00	0.00	0.00	0.00	
6,045.0	0.00	0.00	6,000.0	-331.0	600.3	2.00	-2.00	0.00	180.00	
7,547.9	0.00	0.00	7,502.9	-331.0	600.3	0.00	0.00	0.00	0.00	
8,674.9	90.18	359.76	8,218.0	386.3	597.3	8.00	8.00	0.00	359.76	
8,675.9	90.18	359.76	8,218.0	387.3	597.3	0.00	0.00	0.00	0.00	LPL 735'FSL, 440'FEI
8,901.2	90.18	4.26	8,217.3	612.4	605.2	2.00	0.00	2.00	90.04	
13,219.5	90.18	4.26	8,204.0	4,918.7	926.3	0.00	0.00	0.00	0.00	WP (501-1807H)
13,703.3	90.19	354.59	8,202.5	5,401.9	921.4	2.00	0.00	-2.00	-89.93	
18,182.1	90.19	354.59	8,188.0	9,860.7	499.0	0.00	0.00	0.00	0.00	BHL 300'FNL, 440'FE

Database:	US_EDM	Local Co-ordinate Reference:	Well Salt Ranch Fee 501-1807H
Company:	Clear Creek Resource Partners	TVD Reference:	WELL @ 5626.0ft (Original Well Elev)
Project:	SEC.18-T11N-R64W	MD Reference:	WELL @ 5626.0ft (Original Well Elev)
Site:	Salt Ranch Fee 1807H East Pad Sec.18-T11N-R64W	North Reference:	True
Well:	Salt Ranch Fee 501-1807H	Survey Calculation Method:	Minimum Curvature
Wellbore:	Wellbore #1		
Design:	Plan #1 (9-26-17)		

Planned Survey									
Measured Depth (ft)	Inclination (°)	Azimuth (°)	Vertical Depth (ft)	+N/-S (ft)	+E/-W (ft)	Vertical Section (ft)	Dogleg Rate (°/100usft)	Build Rate (°/100usft)	Turn Rate (°/100usft)
0.0	0.00	0.00	0.0	0.0	0.0	0.0	0.00	0.00	0.00
1.0	0.00	0.00	1.0	0.0	0.0	0.0	0.00	0.00	0.00
SHL 364'FSL, 1008'FEL, SEC.18									
100.0	0.00	0.00	100.0	0.0	0.0	0.0	0.00	0.00	0.00
200.0	0.00	0.00	200.0	0.0	0.0	0.0	0.00	0.00	0.00
300.0	0.00	0.00	300.0	0.0	0.0	0.0	0.00	0.00	0.00
400.0	0.00	0.00	400.0	0.0	0.0	0.0	0.00	0.00	0.00
500.0	0.00	0.00	500.0	0.0	0.0	0.0	0.00	0.00	0.00
KOP - Start Build 1.50									
600.0	1.50	118.87	600.0	-0.6	1.1	-0.6	1.50	1.50	0.00
700.0	3.00	118.87	699.9	-2.5	4.6	-2.3	1.50	1.50	0.00
800.0	4.50	118.87	799.7	-5.7	10.3	-5.2	1.50	1.50	0.00
900.0	6.00	118.87	899.3	-10.1	18.3	-9.2	1.50	1.50	0.00
1,000.0	7.50	118.87	998.6	-15.8	28.6	-14.3	1.50	1.50	0.00
1,015.5	7.73	118.87	1,014.0	-16.8	30.4	-15.2	1.50	1.50	0.00
1,100.0	7.73	118.87	1,097.7	-22.3	40.4	-20.2	0.00	0.00	0.00
1,200.0	7.73	118.87	1,196.8	-28.8	52.2	-26.1	0.00	0.00	0.00
1,300.0	7.73	118.87	1,295.8	-35.3	63.9	-32.0	0.00	0.00	0.00
1,400.0	7.73	118.87	1,394.9	-41.8	75.7	-37.9	0.00	0.00	0.00
1,500.0	7.73	118.87	1,494.0	-48.2	87.5	-43.8	0.00	0.00	0.00
1,600.0	7.73	118.87	1,593.1	-54.7	99.3	-49.7	0.00	0.00	0.00
1,700.0	7.73	118.87	1,692.2	-61.2	111.1	-55.6	0.00	0.00	0.00
1,800.0	7.73	118.87	1,791.3	-67.7	122.9	-61.4	0.00	0.00	0.00
1,900.0	7.73	118.87	1,890.4	-74.2	134.6	-67.3	0.00	0.00	0.00
2,000.0	7.73	118.87	1,989.5	-80.7	146.4	-73.2	0.00	0.00	0.00
2,100.0	7.73	118.87	2,088.6	-87.2	158.2	-79.1	0.00	0.00	0.00
2,200.0	7.73	118.87	2,187.7	-93.7	170.0	-85.0	0.00	0.00	0.00
2,300.0	7.73	118.87	2,286.8	-100.2	181.8	-90.9	0.00	0.00	0.00
2,400.0	7.73	118.87	2,385.8	-106.7	193.6	-96.8	0.00	0.00	0.00
2,500.0	7.73	118.87	2,484.9	-113.2	205.3	-102.7	0.00	0.00	0.00
2,600.0	7.73	118.87	2,584.0	-119.7	217.1	-108.6	0.00	0.00	0.00
2,700.0	7.73	118.87	2,683.1	-126.2	228.9	-114.5	0.00	0.00	0.00
2,800.0	7.73	118.87	2,782.2	-132.7	240.7	-120.4	0.00	0.00	0.00
2,900.0	7.73	118.87	2,881.3	-139.2	252.5	-126.3	0.00	0.00	0.00
3,000.0	7.73	118.87	2,980.4	-145.7	264.3	-132.2	0.00	0.00	0.00
3,100.0	7.73	118.87	3,079.5	-152.2	276.0	-138.1	0.00	0.00	0.00
3,200.0	7.73	118.87	3,178.6	-158.7	287.8	-144.0	0.00	0.00	0.00
3,300.0	7.73	118.87	3,277.7	-165.2	299.6	-149.8	0.00	0.00	0.00
3,400.0	7.73	118.87	3,376.8	-171.7	311.4	-155.7	0.00	0.00	0.00
3,500.0	7.73	118.87	3,475.8	-178.2	323.2	-161.6	0.00	0.00	0.00
3,600.0	7.73	118.87	3,574.9	-184.7	335.0	-167.5	0.00	0.00	0.00
3,700.0	7.73	118.87	3,674.0	-191.2	346.7	-173.4	0.00	0.00	0.00
3,800.0	7.73	118.87	3,773.1	-197.7	358.5	-179.3	0.00	0.00	0.00
3,900.0	7.73	118.87	3,872.2	-204.2	370.3	-185.2	0.00	0.00	0.00
4,000.0	7.73	118.87	3,971.3	-210.7	382.1	-191.1	0.00	0.00	0.00
4,100.0	7.73	118.87	4,070.4	-217.2	393.9	-197.0	0.00	0.00	0.00
4,200.0	7.73	118.87	4,169.5	-223.7	405.7	-202.9	0.00	0.00	0.00
4,300.0	7.73	118.87	4,268.6	-230.2	417.4	-208.8	0.00	0.00	0.00
4,400.0	7.73	118.87	4,367.7	-236.7	429.2	-214.7	0.00	0.00	0.00
4,500.0	7.73	118.87	4,466.7	-243.2	441.0	-220.6	0.00	0.00	0.00
4,600.0	7.73	118.87	4,565.8	-249.7	452.8	-226.5	0.00	0.00	0.00
4,700.0	7.73	118.87	4,664.9	-256.2	464.6	-232.4	0.00	0.00	0.00
4,800.0	7.73	118.87	4,764.0	-262.7	476.3	-238.2	0.00	0.00	0.00

Database:	US_EDM	Local Co-ordinate Reference:	Well Salt Ranch Fee 501-1807H
Company:	Clear Creek Resource Partners	TVD Reference:	WELL @ 5626.0ft (Original Well Elev)
Project:	SEC.18-T11N-R64W	MD Reference:	WELL @ 5626.0ft (Original Well Elev)
Site:	Salt Ranch Fee 1807H East Pad Sec.18-T11N-R64W	North Reference:	True
Well:	Salt Ranch Fee 501-1807H	Survey Calculation Method:	Minimum Curvature
Wellbore:	Wellbore #1		
Design:	Plan #1 (9-26-17)		

Planned Survey									
Measured Depth (ft)	Inclination (°)	Azimuth (°)	Vertical Depth (ft)	+N/-S (ft)	+E/-W (ft)	Vertical Section (ft)	Dogleg Rate (°/100usft)	Build Rate (°/100usft)	Turn Rate (°/100usft)
4,900.0	7.73	118.87	4,863.1	-269.2	488.1	-244.1	0.00	0.00	0.00
5,000.0	7.73	118.87	4,962.2	-275.6	499.9	-250.0	0.00	0.00	0.00
5,100.0	7.73	118.87	5,061.3	-282.1	511.7	-255.9	0.00	0.00	0.00
5,200.0	7.73	118.87	5,160.4	-288.6	523.5	-261.8	0.00	0.00	0.00
5,300.0	7.73	118.87	5,259.5	-295.1	535.3	-267.7	0.00	0.00	0.00
5,400.0	7.73	118.87	5,358.6	-301.6	547.0	-273.6	0.00	0.00	0.00
5,500.0	7.73	118.87	5,457.7	-308.1	558.8	-279.5	0.00	0.00	0.00
5,600.0	7.73	118.87	5,556.7	-314.6	570.6	-285.4	0.00	0.00	0.00
5,658.3	7.73	118.87	5,614.5	-318.4	577.5	-288.8	0.00	0.00	0.00
Start Drop -2.00									
5,700.0	6.90	118.87	5,655.9	-321.0	582.1	-291.2	2.00	-2.00	0.00
5,800.0	4.90	118.87	5,755.3	-325.9	591.1	-295.7	2.00	-2.00	0.00
5,900.0	2.90	118.87	5,855.1	-329.2	597.1	-298.6	2.00	-2.00	0.00
6,000.0	0.90	118.87	5,955.0	-330.8	600.0	-300.1	2.00	-2.00	0.00
6,045.0	0.00	0.00	6,000.0	-331.0	600.3	-300.2	2.00	-2.00	0.00
6,100.0	0.00	0.00	6,055.0	-331.0	600.3	-300.2	0.00	0.00	0.00
6,200.0	0.00	0.00	6,155.0	-331.0	600.3	-300.2	0.00	0.00	0.00
6,300.0	0.00	0.00	6,255.0	-331.0	600.3	-300.2	0.00	0.00	0.00
6,400.0	0.00	0.00	6,355.0	-331.0	600.3	-300.2	0.00	0.00	0.00
6,500.0	0.00	0.00	6,455.0	-331.0	600.3	-300.2	0.00	0.00	0.00
6,600.0	0.00	0.00	6,555.0	-331.0	600.3	-300.2	0.00	0.00	0.00
6,700.0	0.00	0.00	6,655.0	-331.0	600.3	-300.2	0.00	0.00	0.00
6,800.0	0.00	0.00	6,755.0	-331.0	600.3	-300.2	0.00	0.00	0.00
6,900.0	0.00	0.00	6,855.0	-331.0	600.3	-300.2	0.00	0.00	0.00
7,000.0	0.00	0.00	6,955.0	-331.0	600.3	-300.2	0.00	0.00	0.00
7,100.0	0.00	0.00	7,055.0	-331.0	600.3	-300.2	0.00	0.00	0.00
7,200.0	0.00	0.00	7,155.0	-331.0	600.3	-300.2	0.00	0.00	0.00
7,300.0	0.00	0.00	7,255.0	-331.0	600.3	-300.2	0.00	0.00	0.00
7,400.0	0.00	0.00	7,355.0	-331.0	600.3	-300.2	0.00	0.00	0.00
7,500.0	0.00	0.00	7,455.0	-331.0	600.3	-300.2	0.00	0.00	0.00
7,547.9	0.00	0.00	7,502.9	-331.0	600.3	-300.2	0.00	0.00	0.00
Start Build 8.00									
7,600.0	4.17	359.76	7,555.0	-329.1	600.3	-298.3	8.00	8.00	0.00
7,700.0	12.17	359.76	7,653.9	-314.9	600.2	-284.2	8.00	8.00	0.00
7,800.0	20.17	359.76	7,749.9	-287.1	600.1	-256.4	8.00	8.00	0.00
7,900.0	28.17	359.76	7,841.0	-246.2	599.9	-215.5	8.00	8.00	0.00
8,000.0	36.18	359.76	7,925.6	-193.0	599.7	-162.4	8.00	8.00	0.00
8,100.0	44.18	359.76	8,001.9	-128.5	599.4	-98.0	8.00	8.00	0.00
8,200.0	52.18	359.76	8,068.6	-54.0	599.1	-23.7	8.00	8.00	0.00
8,300.0	60.18	359.76	8,124.2	29.0	598.8	59.2	8.00	8.00	0.00
8,400.0	68.18	359.76	8,167.7	118.9	598.4	149.0	8.00	8.00	0.00
8,500.0	76.18	359.76	8,198.3	214.0	598.0	244.0	8.00	8.00	0.00
8,600.0	84.18	359.76	8,215.3	312.5	597.6	342.3	8.00	8.00	0.00
8,674.9	90.18	359.76	8,218.0	386.3	597.3	416.0	8.00	8.00	0.00
8,675.9	90.18	359.76	8,218.0	387.3	597.3	417.0	0.00	0.00	0.00
Start DLS 2.00 TFO 90.04 - LPL 735°FSL, 440°FEL, SEC.18									
8,700.0	90.18	0.24	8,217.9	411.4	597.3	441.0	2.00	0.00	2.00
8,800.0	90.18	2.24	8,217.6	511.3	599.4	541.0	2.00	0.00	2.00
8,900.0	90.18	4.24	8,217.3	611.2	605.1	641.0	2.00	0.00	2.00
8,901.2	90.18	4.26	8,217.3	612.4	605.2	642.2	2.00	0.00	2.00
9,000.0	90.18	4.26	8,217.0	710.9	612.5	740.9	0.00	0.00	0.00
9,100.0	90.18	4.26	8,216.7	810.6	620.0	840.9	0.00	0.00	0.00
9,200.0	90.18	4.26	8,216.4	910.3	627.4	940.9	0.00	0.00	0.00

Database:	US_EDM	Local Co-ordinate Reference:	Well Salt Ranch Fee 501-1807H
Company:	Clear Creek Resource Partners	TVD Reference:	WELL @ 5626.0ft (Original Well Elev)
Project:	SEC.18-T11N-R64W	MD Reference:	WELL @ 5626.0ft (Original Well Elev)
Site:	Salt Ranch Fee 1807H East Pad Sec.18-T11N-R64W	North Reference:	True
Well:	Salt Ranch Fee 501-1807H	Survey Calculation Method:	Minimum Curvature
Wellbore:	Wellbore #1		
Design:	Plan #1 (9-26-17)		

Planned Survey										
Measured Depth (ft)	Inclination (°)	Azimuth (°)	Vertical Depth (ft)	+N/-S (ft)	+E/-W (ft)	Vertical Section (ft)	Dogleg Rate (°/100usft)	Build Rate (°/100usft)	Turn Rate (°/100usft)	
9,300.0	90.18	4.26	8,216.1	1,010.1	634.8	1,040.9	0.00	0.00	0.00	
9,400.0	90.18	4.26	8,215.8	1,109.8	642.3	1,140.8	0.00	0.00	0.00	
9,500.0	90.18	4.26	8,215.5	1,209.5	649.7	1,240.8	0.00	0.00	0.00	
9,600.0	90.18	4.26	8,215.1	1,309.2	657.1	1,340.8	0.00	0.00	0.00	
9,700.0	90.18	4.26	8,214.8	1,409.0	664.6	1,440.7	0.00	0.00	0.00	
9,800.0	90.18	4.26	8,214.5	1,508.7	672.0	1,540.7	0.00	0.00	0.00	
9,900.0	90.18	4.26	8,214.2	1,608.4	679.4	1,640.7	0.00	0.00	0.00	
10,000.0	90.18	4.26	8,213.9	1,708.1	686.9	1,740.7	0.00	0.00	0.00	
10,100.0	90.18	4.26	8,213.6	1,807.8	694.3	1,840.6	0.00	0.00	0.00	
10,200.0	90.18	4.26	8,213.3	1,907.6	701.7	1,940.6	0.00	0.00	0.00	
10,300.0	90.18	4.26	8,213.0	2,007.3	709.2	2,040.6	0.00	0.00	0.00	
10,400.0	90.18	4.26	8,212.7	2,107.0	716.6	2,140.5	0.00	0.00	0.00	
10,500.0	90.18	4.26	8,212.4	2,206.7	724.1	2,240.5	0.00	0.00	0.00	
10,600.0	90.18	4.26	8,212.1	2,306.5	731.5	2,340.5	0.00	0.00	0.00	
10,700.0	90.18	4.26	8,211.8	2,406.2	738.9	2,440.5	0.00	0.00	0.00	
10,800.0	90.18	4.26	8,211.5	2,505.9	746.4	2,540.4	0.00	0.00	0.00	
10,900.0	90.18	4.26	8,211.1	2,605.6	753.8	2,640.4	0.00	0.00	0.00	
11,000.0	90.18	4.26	8,210.8	2,705.4	761.2	2,740.4	0.00	0.00	0.00	
11,100.0	90.18	4.26	8,210.5	2,805.1	768.7	2,840.3	0.00	0.00	0.00	
11,200.0	90.18	4.26	8,210.2	2,904.8	776.1	2,940.3	0.00	0.00	0.00	
11,300.0	90.18	4.26	8,209.9	3,004.5	783.5	3,040.3	0.00	0.00	0.00	
11,400.0	90.18	4.26	8,209.6	3,104.2	791.0	3,140.3	0.00	0.00	0.00	
11,500.0	90.18	4.26	8,209.3	3,204.0	798.4	3,240.2	0.00	0.00	0.00	
11,600.0	90.18	4.26	8,209.0	3,303.7	805.9	3,340.2	0.00	0.00	0.00	
11,700.0	90.18	4.26	8,208.7	3,403.4	813.3	3,440.2	0.00	0.00	0.00	
11,800.0	90.18	4.26	8,208.4	3,503.1	820.7	3,540.1	0.00	0.00	0.00	
11,900.0	90.18	4.26	8,208.1	3,602.9	828.2	3,640.1	0.00	0.00	0.00	
12,000.0	90.18	4.26	8,207.8	3,702.6	835.6	3,740.1	0.00	0.00	0.00	
12,100.0	90.18	4.26	8,207.4	3,802.3	843.0	3,840.0	0.00	0.00	0.00	
12,200.0	90.18	4.26	8,207.1	3,902.0	850.5	3,940.0	0.00	0.00	0.00	
12,300.0	90.18	4.26	8,206.8	4,001.7	857.9	4,040.0	0.00	0.00	0.00	
12,400.0	90.18	4.26	8,206.5	4,101.5	865.3	4,140.0	0.00	0.00	0.00	
12,500.0	90.18	4.26	8,206.2	4,201.2	872.8	4,239.9	0.00	0.00	0.00	
12,600.0	90.18	4.26	8,205.9	4,300.9	880.2	4,339.9	0.00	0.00	0.00	
12,700.0	90.18	4.26	8,205.6	4,400.6	887.6	4,439.9	0.00	0.00	0.00	
12,800.0	90.18	4.26	8,205.3	4,500.4	895.1	4,539.8	0.00	0.00	0.00	
12,900.0	90.18	4.26	8,205.0	4,600.1	902.5	4,639.8	0.00	0.00	0.00	
13,000.0	90.18	4.26	8,204.7	4,699.8	910.0	4,739.8	0.00	0.00	0.00	
13,100.0	90.18	4.26	8,204.4	4,799.5	917.4	4,839.8	0.00	0.00	0.00	
13,200.0	90.18	4.26	8,204.1	4,899.3	924.8	4,939.7	0.00	0.00	0.00	
13,219.5	90.18	4.26	8,204.0	4,918.7	926.3	4,959.2	0.00	0.00	0.00	
Start DLS 2.00 TFO -89.93 - WP (501-1807H)										
13,300.0	90.18	2.65	8,203.8	4,999.0	931.1	5,039.7	2.00	0.00	-2.00	
13,400.0	90.18	0.65	8,203.4	5,099.0	934.0	5,139.7	2.00	0.00	-2.00	
13,500.0	90.18	358.65	8,203.1	5,199.0	933.4	5,239.5	2.00	0.00	-2.00	
13,600.0	90.18	356.65	8,202.8	5,298.9	929.3	5,339.1	2.00	0.00	-2.00	
13,700.0	90.19	354.65	8,202.5	5,398.6	921.7	5,438.3	2.00	0.00	-2.00	
13,703.3	90.19	354.59	8,202.5	5,401.9	921.4	5,441.6	2.00	0.00	-2.00	
13,800.0	90.19	354.59	8,202.2	5,498.2	912.3	5,537.2	0.00	0.00	0.00	
13,900.0	90.19	354.59	8,201.8	5,597.7	902.9	5,636.2	0.00	0.00	0.00	
14,000.0	90.19	354.59	8,201.5	5,697.3	893.4	5,735.1	0.00	0.00	0.00	
14,100.0	90.19	354.59	8,201.2	5,796.8	884.0	5,834.1	0.00	0.00	0.00	
14,200.0	90.19	354.59	8,200.9	5,896.4	874.6	5,933.0	0.00	0.00	0.00	

Database:	US_EDM	Local Co-ordinate Reference:	Well Salt Ranch Fee 501-1807H
Company:	Clear Creek Resource Partners	TVD Reference:	WELL @ 5626.0ft (Original Well Elev)
Project:	SEC.18-T11N-R64W	MD Reference:	WELL @ 5626.0ft (Original Well Elev)
Site:	Salt Ranch Fee 1807H East Pad Sec.18-T11N-R64W	North Reference:	True
Well:	Salt Ranch Fee 501-1807H	Survey Calculation Method:	Minimum Curvature
Wellbore:	Wellbore #1		
Design:	Plan #1 (9-26-17)		

Planned Survey									
Measured Depth (ft)	Inclination (°)	Azimuth (°)	Vertical Depth (ft)	+N/-S (ft)	+E/-W (ft)	Vertical Section (ft)	Dogleg Rate (°/100usft)	Build Rate (°/100usft)	Turn Rate (°/100usft)
14,300.0	90.19	354.59	8,200.5	5,995.9	865.1	6,032.0	0.00	0.00	0.00
14,400.0	90.19	354.59	8,200.2	6,095.5	855.7	6,130.9	0.00	0.00	0.00
14,500.0	90.19	354.59	8,199.9	6,195.0	846.3	6,229.9	0.00	0.00	0.00
14,600.0	90.19	354.59	8,199.6	6,294.6	836.9	6,328.8	0.00	0.00	0.00
14,700.0	90.19	354.59	8,199.2	6,394.1	827.4	6,427.8	0.00	0.00	0.00
14,800.0	90.19	354.59	8,198.9	6,493.7	818.0	6,526.7	0.00	0.00	0.00
14,900.0	90.19	354.59	8,198.6	6,593.3	808.6	6,625.7	0.00	0.00	0.00
15,000.0	90.19	354.59	8,198.3	6,692.8	799.1	6,724.6	0.00	0.00	0.00
15,100.0	90.19	354.59	8,198.0	6,792.4	789.7	6,823.6	0.00	0.00	0.00
15,200.0	90.19	354.59	8,197.6	6,891.9	780.3	6,922.5	0.00	0.00	0.00
15,300.0	90.19	354.59	8,197.3	6,991.5	770.8	7,021.5	0.00	0.00	0.00
15,400.0	90.19	354.59	8,197.0	7,091.0	761.4	7,120.4	0.00	0.00	0.00
15,500.0	90.19	354.59	8,196.7	7,190.6	752.0	7,219.4	0.00	0.00	0.00
15,600.0	90.19	354.59	8,196.3	7,290.1	742.5	7,318.3	0.00	0.00	0.00
15,700.0	90.19	354.59	8,196.0	7,389.7	733.1	7,417.3	0.00	0.00	0.00
15,800.0	90.19	354.59	8,195.7	7,489.2	723.7	7,516.2	0.00	0.00	0.00
15,900.0	90.19	354.59	8,195.4	7,588.8	714.2	7,615.2	0.00	0.00	0.00
16,000.0	90.19	354.59	8,195.0	7,688.3	704.8	7,714.1	0.00	0.00	0.00
16,100.0	90.19	354.59	8,194.7	7,787.9	695.4	7,813.1	0.00	0.00	0.00
16,200.0	90.19	354.59	8,194.4	7,887.5	685.9	7,912.0	0.00	0.00	0.00
16,300.0	90.19	354.59	8,194.1	7,987.0	676.5	8,011.0	0.00	0.00	0.00
16,400.0	90.19	354.59	8,193.8	8,086.6	667.1	8,109.9	0.00	0.00	0.00
16,500.0	90.19	354.59	8,193.4	8,186.1	657.6	8,208.9	0.00	0.00	0.00
16,600.0	90.19	354.59	8,193.1	8,285.7	648.2	8,307.8	0.00	0.00	0.00
16,700.0	90.19	354.59	8,192.8	8,385.2	638.8	8,406.8	0.00	0.00	0.00
16,800.0	90.19	354.59	8,192.5	8,484.8	629.3	8,505.7	0.00	0.00	0.00
16,900.0	90.19	354.59	8,192.1	8,584.3	619.9	8,604.7	0.00	0.00	0.00
17,000.0	90.19	354.59	8,191.8	8,683.9	610.5	8,703.6	0.00	0.00	0.00
17,100.0	90.19	354.59	8,191.5	8,783.4	601.0	8,802.6	0.00	0.00	0.00
17,200.0	90.19	354.59	8,191.2	8,883.0	591.6	8,901.5	0.00	0.00	0.00
17,300.0	90.19	354.59	8,190.8	8,982.5	582.2	9,000.5	0.00	0.00	0.00
17,400.0	90.19	354.59	8,190.5	9,082.1	572.7	9,099.4	0.00	0.00	0.00
17,500.0	90.19	354.59	8,190.2	9,181.6	563.3	9,198.4	0.00	0.00	0.00
17,600.0	90.19	354.59	8,189.9	9,281.2	553.9	9,297.3	0.00	0.00	0.00
17,700.0	90.19	354.59	8,189.6	9,380.8	544.4	9,396.3	0.00	0.00	0.00
17,800.0	90.19	354.59	8,189.2	9,480.3	535.0	9,495.2	0.00	0.00	0.00
17,900.0	90.19	354.59	8,188.9	9,579.9	525.6	9,594.2	0.00	0.00	0.00
18,000.0	90.19	354.59	8,188.6	9,679.4	516.1	9,693.1	0.00	0.00	0.00
18,100.0	90.19	354.59	8,188.3	9,779.0	506.7	9,792.1	0.00	0.00	0.00
18,182.1	90.19	354.59	8,188.0	9,860.7	499.0	9,873.3	0.00	0.00	0.00
TD at 18182.1 - BHL 300'FNL, 440'FEL, SEC.7									

Database:	US_EDM	Local Co-ordinate Reference:	Well Salt Ranch Fee 501-1807H
Company:	Clear Creek Resource Partners	TVD Reference:	WELL @ 5626.0ft (Original Well Elev)
Project:	SEC.18-T11N-R64W	MD Reference:	WELL @ 5626.0ft (Original Well Elev)
Site:	Salt Ranch Fee 1807H East Pad Sec.18-T11N-R64W	North Reference:	True
Well:	Salt Ranch Fee 501-1807H	Survey Calculation Method:	Minimum Curvature
Wellbore:	Wellbore #1		
Design:	Plan #1 (9-26-17)		

Design Targets									
Target Name - hit/miss target - Shape	Dip Angle (°)	Dip Dir. (°)	TVD (ft)	+N/-S (ft)	+E/-W (ft)	Northing (usft)	Easting (usft)	Latitude	Longitude
SHL 364'FSL, 1008'FEL - plan hits target center - Point	0.00	0.00	1.0	0.0	0.0	1,577,347.89	3,253,100.54	40.914601	-104.584267
BHL 300'FNL, 440'FEL, - plan hits target center - Point	0.00	0.00	8,188.0	9,860.7	499.0	1,587,213.42	3,253,497.66	40.941665	-104.582461
WP (501-1807H) - plan hits target center - Point	0.00	0.00	8,204.0	4,918.7	926.3	1,582,275.99	3,253,975.99	40.928101	-104.580915
LPL 735'FSL, 440'FEL, 9 - plan hits target center - Point	0.00	0.00	8,218.0	387.3	597.3	1,577,741.36	3,253,693.79	40.915664	-104.582106

Plan Annotations					
Measured Depth (ft)	Vertical Depth (ft)	Local Coordinates			
		+N/-S (ft)	+E/-W (ft)	Comment	
500.0	500.0	0.0	0.0	KOP - Start Build 1.50	
5,658.3	5,614.5	-16.8	30.4	Start Drop -2.00	
7,547.9	7,502.9	-318.4	577.5	Start Build 8.00	
8,675.9	8,218.0	-331.0	600.3	Start DLS 2.00 TFO 90.04	
13,219.5	8,204.0	-331.0	600.3	Start DLS 2.00 TFO -89.93	
18,182.1	8,188.0	386.3	597.3	TD at 18182.1	



Clear Creek Resource Partners

SEC.18-T11N-R64W

Salt Ranch Fee 1807H East Pad Sec.18-T11N-R64W

Salt Ranch Fee 501-1807H

Wellbore #1

Plan #1 (9-26-17)

Anticollision Report

12 October, 2017

Company:	Clear Creek Resource Partners	Local Co-ordinate Reference:	Well Salt Ranch Fee 501-1807H
Project:	SEC.18-T11N-R64W	TVD Reference:	WELL @ 5626.0ft (Original Well Elev)
Reference Site:	Salt Ranch Fee 1807H East Pad Sec.18-T11N-R64W	MD Reference:	WELL @ 5626.0ft (Original Well Elev)
Site Error:	0.0 ft	North Reference:	True
Reference Well:	Salt Ranch Fee 501-1807H	Survey Calculation Method:	Minimum Curvature
Well Error:	0.0 ft	Output errors are at	2.00 sigma
Reference Wellbore	Wellbore #1	Database:	US_EDM
Reference Design:	Plan #1 (9-26-17)	Offset TVD Reference:	Offset Datum

Reference	Plan #1 (9-26-17)		
Filter type:	NO GLOBAL FILTER: Using user defined selection & filtering criteria		
Interpolation Method:	Stations	Error Model:	ISCWSA
Depth Range:	Unlimited	Scan Method:	Closest Approach 3D
Results Limited by:	Maximum center-center distance of 500.0 ft	Error Surface:	Elliptical Conic
Warning Levels Evaluated at:	2.00 Sigma	Casing Method:	Not applied

Survey Tool Program	Date 10/12/2017			
From (ft)	To (ft)	Survey (Wellbore)	Tool Name	Description
0.0	18,181.2	Plan #1 (9-26-17) (Wellbore #1)	MWD	MWD - Standard

Summary						
Site Name	Reference Measured Depth (ft)	Offset Measured Depth (ft)	Distance Between Centres (ft)	Distance Between Ellipses (ft)	Separation Factor	Warning
Offset Well - Wellbore - Design						
Salt Ranch Fee 1807H East Pad Sec.18-T11N-R64W						
Salt Ranch Fee 201-1807H - Wellbore #1 - Plan #1 (9-26	200.0	200.0	30.1	29.5	44.678	CC
Salt Ranch Fee 201-1807H - Wellbore #1 - Plan #1 (9-26	18,182.1	17,966.2	213.9	2.4	1.011	Level 2, ES, SF
Salt Ranch Fee 202-1807H - Wellbore #1 - Plan #1 (9-26	500.0	500.0	29.9	27.8	14.757	CC, ES
Salt Ranch Fee 202-1807H - Wellbore #1 - Plan #1 (9-26	700.0	699.9	34.6	31.7	11.986	SF
Salt Ranch Fee 203-1807H - Wellbore #1 - Plan #1 (9-26	500.0	500.0	90.1	88.1	44.545	CC, ES
Salt Ranch Fee 203-1807H - Wellbore #1 - Plan #1 (9-26	900.0	892.1	118.3	114.6	32.019	SF
Salt Ranch Fee 204-1807H - Wellbore #1 - Plan #1 (9-26	200.0	200.0	150.1	149.4	222.588	CC, ES
Salt Ranch Fee 204-1807H - Wellbore #1 - Plan #1 (9-26	1,000.0	955.4	254.4	250.1	60.042	SF
Salt Ranch Fee 502-1807H - Wellbore #1 - Plan #1 (9-26	500.0	500.0	60.0	58.0	29.651	CC, ES
Salt Ranch Fee 502-1807H - Wellbore #1 - Plan #1 (9-26	800.0	799.7	70.6	67.3	21.253	SF
Salt Ranch Fee 503-1807H - Wellbore #1 - Plan #1 (9-26	400.0	400.0	120.0	118.4	76.246	CC, ES
Salt Ranch Fee 503-1807H - Wellbore #1 - Plan #1 (9-26	900.0	880.6	168.1	164.4	45.365	SF
Salt Ranch Fee 1807H West Pad Sec.18-T11N-R64W						
Salt Ranch Fee 205-1807H - Wellbore #1 - Plan #1 (9-26						Out of range
Salt Ranch Fee 206-1807H - Wellbore #1 - Plan #1 (9-26						Out of range
Salt Ranch Fee 207-1807H - Wellbore #1 - Plan #1 (9-26						Out of range
Salt Ranch Fee 208-1807H - Wellbore #1 - Plan #1 (9-26						Out of range
Salt Ranch Fee 504-1807H - Wellbore #1 - Plan #1 (9-26						Out of range
Salt Ranch Fee 505-1807H - Wellbore #1 - Plan #1 (9-26						Out of range
Salt Ranch Fee 506-1807H - Wellbore #1 - Plan #1 (9-26						Out of range

Offset Design													Offset Site Error:	0.0 ft
Salt Ranch Fee 1807H East Pad Sec.18-T11N-R64W - Salt Ranch Fee 201-1807H - Wellbore #1 - Plan														
Survey Program:		0-MWD											Offset Well Error:	0.0 ft
Reference		Offset		Semi Major Axis			Distance						Warning	
Measured Depth	Vertical Depth	Measured Depth	Vertical Depth	Reference	Offset	Highside Toolface	Offset Wellbore Centre		Between Centres	Between Ellipses	Minimum Separation	Separation Factor		
Depth (ft)	Depth (ft)	Depth (ft)	Depth (ft)	(ft)	(ft)	(°)	+N/-S (ft)	+E/-W (ft)	(ft)	(ft)	(ft)			
0.0	0.0	0.0	0.0	0.0	0.0	89.99	0.0	30.1	30.1					
100.0	100.0	100.0	100.0	0.1	0.1	89.99	0.0	30.1	30.1	29.9	0.22	134.035		
200.0	200.0	200.0	200.0	0.3	0.3	89.99	0.0	30.1	30.1	29.5	0.67	44.678	CC	
300.0	300.0	299.3	299.3	0.6	0.5	91.04	-0.6	31.3	31.3	30.2	1.11	28.281		
400.0	400.0	398.4	398.3	0.8	0.8	93.77	-2.3	34.7	34.9	33.3	1.54	22.615		
500.0	500.0	497.3	497.0	1.0	1.0	97.24	-5.1	40.5	40.9	38.9	1.99	20.555		

CC - Min centre to center distance or convergent point, SF - min separation factor, ES - min ellipse separation

Company:	Clear Creek Resource Partners	Local Co-ordinate Reference:	Well Salt Ranch Fee 501-1807H
Project:	SEC.18-T11N-R64W	TVD Reference:	WELL @ 5626.0ft (Original Well Elev)
Reference Site:	Salt Ranch Fee 1807H East Pad Sec.18-T11N-R64W	MD Reference:	WELL @ 5626.0ft (Original Well Elev)
Site Error:	0.0 ft	North Reference:	True
Reference Well:	Salt Ranch Fee 501-1807H	Survey Calculation Method:	Minimum Curvature
Well Error:	0.0 ft	Output errors are at	2.00 sigma
Reference Wellbore	Wellbore #1	Database:	US_EDM
Reference Design:	Plan #1 (9-26-17)	Offset TVD Reference:	Offset Datum

Offset Design		Salt Ranch Fee 1807H East Pad Sec.18-T 11N-R64W - Salt Ranch Fee 201-1807H - Wellbore #1 - Plan											Offset Site Error:		0.0 ft
Survey Program: 0-MWD													Offset Well Error:		0.0 ft
Reference		Offset		Semi Major Axis			Distance							Warning	
Measured Depth	Vertical	Measured	Vertical	Reference	Offset	Highside	Offset Wellbore Centre		Between	Between	Minimum	Separation			
Depth (ft)	Depth (ft)	Depth (ft)	Depth (ft)	(ft)	(ft)	Tooltace (")	+N/-S (ft)	+E/-W (ft)	Centres (ft)	Ellipses (ft)	Separation (ft)	Factor			
600.0	600.0	595.9	595.2	1.2	1.2	-18.66	-9.1	48.5	48.3	45.9	2.42	19.984			
700.0	699.9	694.3	692.9	1.4	1.5	-16.61	-14.2	58.7	55.8	53.0	2.85	19.602			
800.0	799.7	793.7	791.4	1.6	1.8	-15.26	-20.2	70.8	62.7	59.4	3.29	19.033			
900.0	899.3	893.6	890.3	1.9	2.2	-14.72	-26.2	82.9	67.2	63.4	3.75	17.904			
1,000.0	998.6	993.5	989.4	2.1	2.5	-14.79	-32.3	95.1	69.1	64.9	4.22	16.371			
1,015.5	1,014.0	1,009.1	1,004.8	2.2	2.5	-14.85	-33.2	97.0	69.2	64.9	4.30	16.105			
1,100.0	1,097.7	1,093.5	1,088.4	2.4	2.8	-15.21	-38.4	107.3	69.5	64.8	4.70	14.788			
1,200.0	1,196.8	1,193.5	1,187.5	2.7	3.2	-15.64	-44.4	119.5	69.8	64.6	5.18	13.472			
1,300.0	1,295.8	1,293.5	1,286.6	3.0	3.5	-16.06	-50.5	131.7	70.1	64.4	5.67	12.367			
1,400.0	1,394.9	1,393.5	1,385.6	3.4	3.8	-16.48	-56.5	143.9	70.4	64.2	6.16	11.425			
1,500.0	1,494.0	1,493.5	1,484.7	3.7	4.2	-16.90	-62.6	156.1	70.7	64.0	6.66	10.616			
1,600.0	1,593.1	1,593.5	1,583.8	4.0	4.5	-17.31	-68.7	168.3	71.0	63.8	7.16	9.914			
1,700.0	1,692.2	1,693.5	1,682.8	4.3	4.9	-17.72	-74.7	180.5	71.3	63.6	7.67	9.300			
1,800.0	1,791.3	1,793.5	1,781.9	4.7	5.2	-18.13	-80.8	192.7	71.6	63.4	8.18	8.758			
1,900.0	1,890.4	1,893.5	1,881.0	5.0	5.6	-18.53	-86.8	204.8	71.9	63.3	8.69	8.278			
2,000.0	1,989.5	1,993.5	1,980.0	5.3	5.9	-18.93	-92.9	217.0	72.3	63.1	9.21	7.849			
2,100.0	2,088.6	2,093.5	2,079.1	5.7	6.3	-19.33	-99.0	229.2	72.6	62.9	9.73	7.463			
2,200.0	2,187.7	2,193.5	2,178.2	6.0	6.6	-19.72	-105.0	241.4	72.9	62.7	10.25	7.115			
2,300.0	2,286.8	2,293.5	2,277.3	6.4	6.9	-20.11	-111.1	253.6	73.3	62.5	10.78	6.799			
2,400.0	2,385.8	2,393.5	2,376.3	6.7	7.3	-20.49	-117.1	265.8	73.6	62.3	11.31	6.511			
2,500.0	2,484.9	2,493.5	2,475.4	7.0	7.6	-20.87	-123.2	278.0	74.0	62.1	11.84	6.248			
2,600.0	2,584.0	2,593.5	2,574.5	7.4	8.0	-21.25	-129.3	290.2	74.3	61.9	12.37	6.006			
2,700.0	2,683.1	2,693.5	2,673.5	7.7	8.3	-21.62	-135.3	302.4	74.7	61.7	12.91	5.784			
2,800.0	2,782.2	2,793.5	2,772.6	8.1	8.7	-21.99	-141.4	314.6	75.0	61.6	13.45	5.578			
2,900.0	2,881.3	2,893.5	2,871.7	8.4	9.0	-22.36	-147.4	326.8	75.4	61.4	13.99	5.388			
3,000.0	2,980.4	2,993.5	2,970.7	8.7	9.4	-22.72	-153.5	338.9	75.7	61.2	14.53	5.211			
3,100.0	3,079.5	3,093.5	3,069.8	9.1	9.7	-23.08	-159.6	351.1	76.1	61.0	15.08	5.046			
3,200.0	3,178.6	3,193.5	3,168.9	9.4	10.1	-23.44	-165.6	363.3	76.4	60.8	15.63	4.893			
3,300.0	3,277.7	3,293.5	3,267.9	9.8	10.4	-23.79	-171.7	375.5	76.8	60.6	16.18	4.749			
3,400.0	3,376.8	3,393.5	3,367.0	10.1	10.8	-24.14	-177.7	387.7	77.2	60.5	16.73	4.614			
3,500.0	3,475.8	3,493.5	3,466.1	10.4	11.1	-24.49	-183.8	399.9	77.6	60.3	17.28	4.487			
3,600.0	3,574.9	3,593.5	3,565.1	10.8	11.5	-24.83	-189.8	412.1	77.9	60.1	17.84	4.368			
3,700.0	3,674.0	3,693.5	3,664.2	11.1	11.8	-25.17	-195.9	424.3	78.3	59.9	18.40	4.256			
3,800.0	3,773.1	3,793.5	3,763.3	11.5	12.1	-25.51	-202.0	436.5	78.7	59.7	18.96	4.150			
3,900.0	3,872.2	3,893.5	3,862.3	11.8	12.5	-25.84	-208.0	448.7	79.1	59.6	19.53	4.050			
4,000.0	3,971.3	3,993.5	3,961.4	12.2	12.8	-26.17	-214.1	460.9	79.5	59.4	20.09	3.955			
4,100.0	4,070.4	4,093.5	4,060.5	12.5	13.2	-26.50	-220.1	473.1	79.9	59.2	20.66	3.865			
4,200.0	4,169.5	4,193.5	4,159.5	12.9	13.5	-26.82	-226.2	485.2	80.3	59.0	21.23	3.780			
4,300.0	4,268.6	4,293.5	4,258.6	13.2	13.9	-27.14	-232.3	497.4	80.6	58.8	21.80	3.699			
4,400.0	4,367.7	4,393.5	4,357.7	13.5	14.2	-27.46	-238.3	509.6	81.0	58.7	22.38	3.622			
4,500.0	4,466.7	4,493.5	4,456.7	13.9	14.6	-27.78	-244.4	521.8	81.4	58.5	22.95	3.548			
4,600.0	4,565.8	4,593.5	4,555.8	14.2	14.9	-28.09	-250.4	534.0	81.9	58.3	23.53	3.478			
4,700.0	4,664.9	4,693.5	4,654.9	14.6	15.3	-28.40	-256.5	546.2	82.3	58.1	24.11	3.411			
4,800.0	4,764.0	4,793.5	4,753.9	14.9	15.6	-28.70	-262.6	558.4	82.7	58.0	24.69	3.347			
4,900.0	4,863.1	4,893.5	4,853.0	15.3	16.0	-29.00	-268.6	570.6	83.1	57.8	25.28	3.286			
5,000.0	4,962.2	4,993.5	4,952.1	15.6	16.3	-29.30	-274.7	582.8	83.5	57.6	25.86	3.228			
5,100.0	5,061.3	5,093.5	5,051.1	15.9	16.7	-29.60	-280.7	595.0	83.9	57.4	26.45	3.172			
5,200.0	5,160.4	5,193.5	5,150.2	16.3	17.0	-29.89	-286.8	607.2	84.3	57.3	27.04	3.118			
5,300.0	5,259.5	5,293.5	5,249.3	16.6	17.3	-30.18	-292.9	619.4	84.7	57.1	27.63	3.067			
5,400.0	5,358.6	5,393.5	5,348.3	17.0	17.7	-30.47	-298.9	631.5	85.2	56.9	28.22	3.017			
5,500.0	5,457.7	5,493.4	5,447.4	17.3	18.0	-30.75	-305.0	643.7	85.6	56.8	28.82	2.969			

CC - Min centre to center distance or convergent point, SF - min separation factor, ES - min ellipse separation

Company:	Clear Creek Resource Partners	Local Co-ordinate Reference:	Well Salt Ranch Fee 501-1807H
Project:	SEC.18-T11N-R64W	TVD Reference:	WELL @ 5626.0ft (Original Well Elev)
Reference Site:	Salt Ranch Fee 1807H East Pad Sec.18-T11N-R64W	MD Reference:	WELL @ 5626.0ft (Original Well Elev)
Site Error:	0.0 ft	North Reference:	True
Reference Well:	Salt Ranch Fee 501-1807H	Survey Calculation Method:	Minimum Curvature
Well Error:	0.0 ft	Output errors are at	2.00 sigma
Reference Wellbore	Wellbore #1	Database:	US_EDM
Reference Design:	Plan #1 (9-26-17)	Offset TVD Reference:	Offset Datum

Offset Design		Salt Ranch Fee 1807H East Pad Sec.18-T 11N-R64W - Salt Ranch Fee 201-1807H - Wellbore #1 - Plan											Offset Site Error:		0.0 ft
Survey Program: 0-MWD													Offset Well Error:		0.0 ft
Reference		Offset		Semi Major Axis			Distance							Warning	
Measured Depth (ft)	Vertical Depth (ft)	Measured Depth (ft)	Vertical Depth (ft)	Reference (ft)	Offset (ft)	Highside Toolface (°)	Offset Wellbore Centre +N/-S (ft)	+E/-W (ft)	Between Centres (ft)	Between Ellipses (ft)	Minimum Separation (ft)	Separation Factor			
5,600.0	5,556.7	5,593.4	5,546.5	17.7	18.4	-31.04	-311.0	655.9	86.0	56.6	29.42	2.924			
5,658.3	5,614.5	5,651.8	5,604.2	17.9	18.6	-31.20	-314.6	663.0	86.3	56.5	29.76	2.898			
5,700.0	5,655.9	5,694.4	5,646.5	18.0	18.7	-31.29	-317.1	668.0	86.5	56.5	29.98	2.885			
5,800.0	5,755.3	5,797.1	5,748.7	18.2	18.9	-31.46	-321.9	677.7	87.0	56.6	30.38	2.863			
5,900.0	5,855.1	5,899.9	5,851.1	18.4	19.1	-31.57	-325.1	684.2	87.3	56.6	30.71	2.842			
6,000.0	5,955.0	6,002.6	5,953.8	18.5	19.3	-31.62	-326.6	687.3	87.4	56.4	30.98	2.822			
6,045.0	6,000.0	6,048.8	6,000.0	18.6	19.4	87.24	-326.8	687.6	87.4	56.4	31.05	2.815			
6,100.0	6,055.0	6,103.8	6,055.0	18.7	19.4	87.24	-326.8	687.6	87.4	56.2	31.24	2.799			
6,200.0	6,155.0	6,203.8	6,155.0	18.8	19.6	87.24	-326.8	687.6	87.4	55.9	31.56	2.770			
6,300.0	6,255.0	6,303.8	6,255.0	19.0	19.7	87.24	-326.8	687.6	87.4	55.5	31.88	2.743			
6,400.0	6,355.0	6,403.8	6,355.0	19.1	19.8	87.24	-326.8	687.6	87.4	55.2	32.20	2.715			
6,500.0	6,455.0	6,503.8	6,455.0	19.3	20.0	87.24	-326.8	687.6	87.4	54.9	32.53	2.688			
6,600.0	6,555.0	6,603.8	6,555.0	19.4	20.1	87.24	-326.8	687.6	87.4	54.6	32.86	2.660			
6,700.0	6,655.0	6,703.8	6,655.0	19.5	20.2	87.24	-326.8	687.6	87.4	54.2	33.19	2.634			
6,800.0	6,755.0	6,803.8	6,755.0	19.7	20.4	87.24	-326.8	687.6	87.4	53.9	33.53	2.607			
6,900.0	6,855.0	6,903.8	6,855.0	19.8	20.5	87.24	-326.8	687.6	87.4	53.6	33.87	2.581			
7,000.0	6,955.0	7,003.8	6,955.0	20.0	20.7	87.24	-326.8	687.6	87.4	53.2	34.21	2.556			
7,100.0	7,055.0	7,103.8	7,055.0	20.1	20.8	87.24	-326.8	687.6	87.4	52.9	34.55	2.530			
7,200.0	7,155.0	7,203.8	7,155.0	20.3	21.0	87.24	-326.8	687.6	87.4	52.5	34.90	2.505			
7,300.0	7,255.0	7,303.8	7,255.0	20.5	21.1	87.24	-326.8	687.6	87.4	52.2	35.25	2.480			
7,322.6	7,277.7	7,326.5	7,277.7	20.5	21.2	87.24	-326.8	687.6	87.4	52.1	35.33	2.475			
7,400.0	7,355.0	7,403.2	7,354.3	20.6	21.3	85.12	-323.5	687.6	87.6	51.8	35.89	2.442			
7,500.0	7,455.0	7,500.0	7,449.7	20.8	21.3	75.16	-307.9	687.6	90.5	52.8	37.66	2.403			
7,547.9	7,502.9	7,544.3	7,492.5	20.8	21.4	68.40	-296.4	687.6	94.5	55.7	38.76	2.438			
7,550.0	7,505.0	7,546.2	7,494.4	20.8	21.4	68.31	-295.9	687.6	94.7	55.9	38.85	2.439			
7,600.0	7,555.0	7,591.4	7,537.1	20.9	21.4	60.99	-281.4	687.6	101.1	61.2	39.94	2.532			
7,650.0	7,604.7	7,635.8	7,578.2	21.0	21.4	54.71	-264.5	687.6	108.8	68.2	40.64	2.677			
7,700.0	7,653.9	7,679.6	7,617.6	21.0	21.4	49.39	-245.5	687.6	117.4	76.4	40.95	2.866			
7,750.0	7,702.4	7,722.7	7,655.2	21.0	21.3	44.93	-224.3	687.6	126.5	85.6	40.90	3.093			
7,800.0	7,749.9	7,765.3	7,691.0	21.1	21.3	41.18	-201.3	687.6	135.9	95.4	40.53	3.353			
7,850.0	7,796.2	7,807.3	7,725.0	21.1	21.3	38.04	-176.5	687.6	145.4	105.5	39.89	3.645			
7,900.0	7,841.0	7,850.0	7,757.9	21.1	21.3	35.34	-149.4	687.6	154.8	115.8	39.00	3.969			
7,950.0	7,884.2	7,890.1	7,787.3	21.0	21.3	33.16	-122.1	687.6	164.0	126.1	37.92	4.325			
8,000.0	7,925.6	7,930.8	7,815.6	21.0	21.2	31.27	-92.8	687.6	172.8	136.2	36.66	4.715			
8,050.0	7,964.9	7,971.2	7,841.9	21.0	21.2	29.66	-62.2	687.6	181.3	146.0	35.25	5.142			
8,100.0	8,001.9	8,011.3	7,866.3	20.9	21.2	28.29	-30.4	687.6	189.2	155.5	33.73	5.609			
8,150.0	8,036.6	8,050.0	7,888.1	20.9	21.1	27.14	1.6	687.6	196.7	164.5	32.14	6.120			
8,200.0	8,068.6	8,090.5	7,909.1	20.9	21.1	26.14	36.3	687.6	203.6	173.1	30.49	6.677			
8,250.0	8,097.8	8,129.8	7,927.5	20.8	21.1	25.30	71.0	687.6	209.8	181.0	28.83	7.278			
8,300.0	8,124.2	8,168.9	7,943.9	20.8	21.1	24.60	106.4	687.6	215.4	188.2	27.20	7.919			
8,350.0	8,147.5	8,207.8	7,958.2	20.8	21.1	24.02	142.6	687.6	220.4	194.7	25.69	8.578			
8,400.0	8,167.7	8,250.0	7,971.6	20.8	21.1	23.53	182.6	687.6	224.7	200.4	24.31	9.242			
8,450.0	8,184.7	8,285.2	7,980.9	20.8	21.2	23.18	216.5	687.6	228.2	205.0	23.16	9.851			
8,500.0	8,198.3	8,323.7	7,989.2	20.8	21.3	22.91	254.2	687.6	231.0	208.7	22.30	10.358			
8,550.0	8,208.5	8,362.2	7,995.4	21.0	21.4	22.72	292.1	687.6	233.1	211.3	21.80	10.695			
8,600.0	8,215.3	8,400.0	7,999.5	21.1	21.5	22.61	329.7	687.6	234.5	212.8	21.69	10.807			
8,650.0	8,218.6	8,438.9	8,001.7	21.4	21.7	22.59	368.6	687.6	235.0	213.0	22.03	10.671			
8,672.4	8,219.0	8,450.0	8,001.9	21.6	21.8	22.60	379.6	687.6	235.2	212.9	22.27	10.561			
8,674.9	8,218.0	8,450.0	8,001.9	21.6	21.8	22.69	379.6	687.6	234.3	212.0	22.34	10.487			
8,675.9	8,218.0	8,450.0	8,001.9	21.6	21.8	22.69	379.6	687.6	234.3	212.0	22.35	10.486			
8,700.0	8,217.9	8,481.9	8,001.0	21.8	22.0	22.64	410.6	687.7	235.0	212.4	22.65	10.378			

CC - Min centre to center distance or convergent point, SF - min separation factor, ES - min ellipse separation

Company:	Clear Creek Resource Partners	Local Co-ordinate Reference:	Well Salt Ranch Fee 501-1807H
Project:	SEC.18-T11N-R64W	TVD Reference:	WELL @ 5626.0ft (Original Well Elev)
Reference Site:	Salt Ranch Fee 1807H East Pad Sec.18-T11N-R64W	MD Reference:	WELL @ 5626.0ft (Original Well Elev)
Site Error:	0.0 ft	North Reference:	True
Reference Well:	Salt Ranch Fee 501-1807H	Survey Calculation Method:	Minimum Curvature
Well Error:	0.0 ft	Output errors are at	2.00 sigma
Reference Wellbore	Wellbore #1	Database:	US_EDM
Reference Design:	Plan #1 (9-26-17)	Offset TVD Reference:	Offset Datum

Offset Design													Offset Site Error:	0.0 ft
Survey Program: 0-MWD													Offset Well Error:	0.0 ft
Reference		Offset		Semi Major Axis			Distance							Warning
Measured Depth (ft)	Vertical Depth (ft)	Measured Depth (ft)	Vertical Depth (ft)	Reference (ft)	Offset (ft)	Highside Toolface (°)	Offset Wellbore Centre +N/-S (ft)	+E/-W (ft)	Between Centres (ft)	Between Ellipses (ft)	Minimum Separation (ft)	Separation Factor		
8,800.0	8,217.6	8,578.8	8,000.9	22.6	22.7	22.72	507.4	690.1	234.9	211.1	23.85	9.848		
8,901.2	8,217.3	8,677.1	8,000.8	23.5	23.6	22.78	605.5	695.8	234.8	209.6	25.18	9.324		
9,000.0	8,217.0	8,775.8	8,000.8	24.5	24.7	22.79	704.0	703.1	234.5	208.0	26.59	8.820		
9,100.0	8,216.7	8,875.8	8,000.7	25.7	25.9	22.81	803.7	710.5	234.3	206.2	28.13	8.330		
9,200.0	8,216.4	8,975.8	8,000.6	27.0	27.2	22.83	903.5	717.9	234.1	204.4	29.73	7.875		
9,300.0	8,216.1	9,075.8	8,000.5	28.4	28.5	22.84	1,003.2	725.3	233.9	202.5	31.37	7.456		
9,400.0	8,215.8	9,175.8	8,000.5	29.8	29.9	22.86	1,102.9	732.8	233.7	200.6	33.05	7.069		
9,500.0	8,215.5	9,275.8	8,000.4	31.3	31.4	22.87	1,202.6	740.2	233.4	198.7	34.78	6.712		
9,600.0	8,215.1	9,375.8	8,000.3	32.8	32.9	22.89	1,302.4	747.6	233.2	196.7	36.53	6.384		
9,700.0	8,214.8	9,475.8	8,000.2	34.3	34.5	22.90	1,402.1	755.0	233.0	194.7	38.31	6.082		
9,800.0	8,214.5	9,575.8	8,000.1	35.9	36.1	22.92	1,501.8	762.4	232.8	192.6	40.11	5.803		
9,900.0	8,214.2	9,675.8	8,000.1	37.5	37.7	22.94	1,601.5	769.8	232.5	190.6	41.94	5.545		
10,000.0	8,213.9	9,775.8	8,000.0	39.2	39.3	22.95	1,701.3	777.2	232.3	188.5	43.78	5.307		
10,100.0	8,213.6	9,875.8	7,999.9	40.9	41.0	22.97	1,801.0	784.6	232.1	186.5	45.64	5.086		
10,200.0	8,213.3	9,975.8	7,999.8	42.5	42.7	22.98	1,900.7	792.0	231.9	184.4	47.51	4.880		
10,300.0	8,213.0	10,075.8	7,999.8	44.2	44.4	23.00	2,000.4	799.4	231.6	182.2	49.40	4.689		
10,400.0	8,212.7	10,175.8	7,999.7	46.0	46.1	23.02	2,100.2	806.8	231.4	180.1	51.29	4.512		
10,500.0	8,212.4	10,275.8	7,999.6	47.7	47.8	23.03	2,199.9	814.2	231.2	178.0	53.20	4.346		
10,600.0	8,212.1	10,375.8	7,999.5	49.5	49.6	23.05	2,299.6	821.7	231.0	175.9	55.12	4.190		
10,700.0	8,211.8	10,475.8	7,999.5	51.2	51.3	23.06	2,399.3	829.1	230.8	173.7	57.05	4.045		
10,800.0	8,211.5	10,575.8	7,999.4	53.0	53.1	23.08	2,499.0	836.5	230.5	171.5	58.98	3.908		
10,900.0	8,211.1	10,675.8	7,999.3	54.8	54.9	23.10	2,598.8	843.9	230.3	169.4	60.93	3.780		
11,000.0	8,210.8	10,775.8	7,999.2	56.6	56.7	23.11	2,698.5	851.3	230.1	167.2	62.88	3.659		
11,100.0	8,210.5	10,875.8	7,999.1	58.3	58.5	23.13	2,798.2	858.7	229.9	165.0	64.83	3.545		
11,200.0	8,210.2	10,975.8	7,999.1	60.1	60.3	23.14	2,897.9	866.1	229.6	162.8	66.80	3.438		
11,300.0	8,209.9	11,075.8	7,999.0	62.0	62.1	23.16	2,997.7	873.5	229.4	160.6	68.76	3.336		
11,400.0	8,209.6	11,175.8	7,998.9	63.8	63.9	23.18	3,097.4	880.9	229.2	158.5	70.74	3.240		
11,500.0	8,209.3	11,275.8	7,998.8	65.6	65.7	23.19	3,197.1	888.3	229.0	156.3	72.72	3.149		
11,600.0	8,209.0	11,375.8	7,998.8	67.4	67.5	23.21	3,296.8	895.7	228.7	154.0	74.70	3.062		
11,700.0	8,208.7	11,475.8	7,998.7	69.2	69.4	23.23	3,396.6	903.1	228.5	151.8	76.69	2.980		
11,800.0	8,208.4	11,575.8	7,998.6	71.1	71.2	23.24	3,496.3	910.6	228.3	149.6	78.68	2.902		
11,900.0	8,208.1	11,675.8	7,998.5	72.9	73.0	23.26	3,596.0	918.0	228.1	147.4	80.67	2.827		
12,000.0	8,207.8	11,775.8	7,998.4	74.8	74.9	23.28	3,695.7	925.4	227.9	145.2	82.67	2.756		
12,100.0	8,207.4	11,875.8	7,998.4	76.6	76.7	23.29	3,795.5	932.8	227.6	143.0	84.67	2.688		
12,200.0	8,207.1	11,975.8	7,998.3	78.5	78.6	23.31	3,895.2	940.2	227.4	140.7	86.68	2.624		
12,300.0	8,206.8	12,075.8	7,998.2	80.3	80.4	23.33	3,994.9	947.6	227.2	138.5	88.69	2.562		
12,400.0	8,206.5	12,175.8	7,998.1	82.2	82.3	23.34	4,094.6	955.0	227.0	136.3	90.70	2.502		
12,500.0	8,206.2	12,275.8	7,998.1	84.0	84.1	23.36	4,194.4	962.4	226.7	134.0	92.72	2.445		
12,600.0	8,205.9	12,375.8	7,998.0	85.9	86.0	23.38	4,294.1	969.8	226.5	131.8	94.74	2.391		
12,700.0	8,205.6	12,475.8	7,997.9	87.7	87.8	23.39	4,393.8	977.2	226.3	129.5	96.76	2.339		
12,800.0	8,205.3	12,575.8	7,997.8	89.6	89.7	23.41	4,493.5	984.6	226.1	127.3	98.78	2.289		
12,900.0	8,205.0	12,675.8	7,997.8	91.5	91.6	23.43	4,593.3	992.0	225.8	125.0	100.81	2.240		
13,000.0	8,204.7	12,775.8	7,997.7	93.3	93.4	23.44	4,693.0	999.5	225.6	122.8	102.84	2.194		
13,100.0	8,204.4	12,875.8	7,997.6	95.2	95.3	23.46	4,792.7	1,006.9	225.4	120.5	104.87	2.149		
13,200.0	8,204.1	12,975.8	7,997.5	97.1	97.2	23.48	4,892.4	1,014.3	225.2	118.3	106.91	2.106		
13,219.5	8,204.0	12,995.3	7,997.5	97.4	97.5	23.48	4,911.9	1,015.7	225.1	117.8	107.30	2.098		
13,300.0	8,203.8	13,078.2	7,997.4	98.8	99.0	23.54	4,994.6	1,020.9	225.0	116.2	108.87	2.067		
13,400.0	8,203.4	13,181.4	7,997.4	100.5	100.7	23.59	5,097.7	1,024.0	224.9	114.2	110.65	2.032		
13,500.0	8,203.1	13,284.7	7,997.3	102.1	102.4	23.62	5,201.0	1,023.4	224.7	112.3	112.32	2.000		
13,600.0	8,202.8	13,387.9	7,997.2	103.7	104.1	23.63	5,304.1	1,019.1	224.4	110.5	113.87	1.971		
13,703.3	8,202.5	13,494.4	7,997.1	105.4	105.8	23.60	5,410.3	1,010.8	224.1	108.7	115.37	1.942		

CC - Min centre to center distance or convergent point, SF - min separation factor, ES - min ellipse separation

Company:	Clear Creek Resource Partners	Local Co-ordinate Reference:	Well Salt Ranch Fee 501-1807H
Project:	SEC.18-T11N-R64W	TVD Reference:	WELL @ 5626.0ft (Original Well Elev)
Reference Site:	Salt Ranch Fee 1807H East Pad Sec.18-T11N-R64W	MD Reference:	WELL @ 5626.0ft (Original Well Elev)
Site Error:	0.0 ft	North Reference:	True
Reference Well:	Salt Ranch Fee 501-1807H	Survey Calculation Method:	Minimum Curvature
Well Error:	0.0 ft	Output errors are at	2.00 sigma
Reference Wellbore	Wellbore #1	Database:	US_EDM
Reference Design:	Plan #1 (9-26-17)	Offset TVD Reference:	Offset Datum

Offset Design													Offset Site Error:	0.0 ft
Survey Program: 0-MWD													Offset Well Error:	0.0 ft
Reference		Offset		Semi Major Axis			Distance							Warning
Measured Depth (ft)	Vertical Depth (ft)	Measured Depth (ft)	Vertical Depth (ft)	Reference (ft)	Offset (ft)	Highside Toolface (°)	Offset Wellbore Centre +N/-S (ft)	+E/-W (ft)	Between Centres (ft)	Between Ellipses (ft)	Minimum Separation (ft)	Separation Factor		
13,800.0	8,202.2	13,591.0	7,997.1	107.1	107.6	23.63	5,506.5	1,001.7	223.9	106.5	117.35	1.908		
13,900.0	8,201.8	13,691.0	7,997.0	109.0	109.5	23.66	5,606.0	992.2	223.6	104.2	119.44	1.872		
14,000.0	8,201.5	13,791.0	7,996.9	110.9	111.4	23.68	5,705.6	982.8	223.4	101.9	121.53	1.838		
14,100.0	8,201.2	13,891.0	7,996.9	112.7	113.2	23.71	5,805.1	973.4	223.2	99.5	123.63	1.805		
14,200.0	8,200.9	13,991.0	7,996.8	114.6	115.1	23.74	5,904.7	963.9	222.9	97.2	125.73	1.773		
14,300.0	8,200.5	14,091.0	7,996.7	116.5	117.0	23.76	6,004.3	954.5	222.7	94.9	127.83	1.742		
14,400.0	8,200.2	14,191.0	7,996.6	118.4	118.8	23.79	6,103.8	945.1	222.5	92.5	129.94	1.712		
14,500.0	8,199.9	14,291.0	7,996.6	120.3	120.7	23.82	6,203.4	935.6	222.2	90.2	132.05	1.683		
14,600.0	8,199.6	14,391.0	7,996.5	122.1	122.6	23.84	6,302.9	926.2	222.0	87.8	134.16	1.655		
14,700.0	8,199.2	14,491.0	7,996.4	124.0	124.5	23.87	6,402.5	916.8	221.8	85.5	136.28	1.627		
14,800.0	8,198.9	14,591.0	7,996.4	125.9	126.4	23.90	6,502.0	907.3	221.5	83.1	138.40	1.601		
14,900.0	8,198.6	14,691.0	7,996.3	127.8	128.3	23.92	6,601.6	897.9	221.3	80.8	140.52	1.575		
15,000.0	8,198.3	14,791.0	7,996.2	129.7	130.2	23.95	6,701.1	888.5	221.1	78.4	142.65	1.550		
15,100.0	8,198.0	14,891.0	7,996.2	131.6	132.1	23.98	6,800.7	879.0	220.9	76.1	144.78	1.525		
15,200.0	8,197.6	14,991.0	7,996.1	133.5	134.0	24.00	6,900.2	869.6	220.6	73.7	146.91	1.502		
15,300.0	8,197.3	15,091.0	7,996.0	135.4	135.9	24.03	6,999.8	860.2	220.4	71.3	149.05	1.479 Level 3		
15,400.0	8,197.0	15,191.0	7,995.9	137.3	137.8	24.06	7,099.3	850.8	220.2	69.0	151.19	1.456 Level 3		
15,500.0	8,196.7	15,291.0	7,995.9	139.2	139.7	24.09	7,198.9	841.3	219.9	66.6	153.33	1.434 Level 3		
15,600.0	8,196.3	15,391.0	7,995.8	141.1	141.6	24.11	7,298.5	831.9	219.7	64.2	155.47	1.413 Level 3		
15,700.0	8,196.0	15,491.0	7,995.7	143.0	143.5	24.14	7,398.0	822.5	219.5	61.9	157.62	1.392 Level 3		
15,800.0	8,195.7	15,591.0	7,995.7	144.9	145.4	24.17	7,497.6	813.0	219.2	59.5	159.77	1.372 Level 3		
15,900.0	8,195.4	15,691.0	7,995.6	146.8	147.3	24.20	7,597.1	803.6	219.0	57.1	161.93	1.353 Level 3		
16,000.0	8,195.0	15,791.0	7,995.5	148.8	149.2	24.22	7,696.7	794.2	218.8	54.7	164.09	1.333 Level 3		
16,100.0	8,194.7	15,891.0	7,995.5	150.7	151.1	24.25	7,796.2	784.7	218.6	52.3	166.25	1.315 Level 3		
16,200.0	8,194.4	15,991.0	7,995.4	152.6	153.0	24.28	7,895.8	775.3	218.3	49.9	168.41	1.296 Level 3		
16,300.0	8,194.1	16,091.0	7,995.3	154.5	154.9	24.31	7,995.3	765.9	218.1	47.5	170.58	1.279 Level 3		
16,400.0	8,193.8	16,191.0	7,995.2	156.4	156.9	24.33	8,094.9	756.4	217.9	45.1	172.74	1.261 Level 3		
16,500.0	8,193.4	16,291.0	7,995.2	158.3	158.8	24.36	8,194.4	747.0	217.6	42.7	174.92	1.244 Level 2		
16,600.0	8,193.1	16,391.0	7,995.1	160.3	160.7	24.39	8,294.0	737.6	217.4	40.3	177.09	1.228 Level 2		
16,700.0	8,192.8	16,491.0	7,995.0	162.2	162.6	24.42	8,393.5	728.2	217.2	37.9	179.27	1.211 Level 2		
16,800.0	8,192.5	16,591.0	7,995.0	164.1	164.5	24.45	8,493.1	718.7	216.9	35.5	181.45	1.196 Level 2		
16,900.0	8,192.1	16,691.0	7,994.9	166.0	166.5	24.47	8,592.7	709.3	216.7	33.1	183.64	1.180 Level 2		
17,000.0	8,191.8	16,791.0	7,994.8	168.0	168.4	24.50	8,692.2	699.9	216.5	30.7	185.82	1.165 Level 2		
17,100.0	8,191.5	16,891.0	7,994.8	169.9	170.3	24.53	8,791.8	690.4	216.3	28.2	188.01	1.150 Level 2		
17,200.0	8,191.2	16,991.0	7,994.7	171.8	172.2	24.56	8,891.3	681.0	216.0	25.8	190.21	1.136 Level 2		
17,300.0	8,190.8	17,091.0	7,994.6	173.7	174.2	24.59	8,990.9	671.6	215.8	23.4	192.40	1.122 Level 2		
17,400.0	8,190.5	17,191.0	7,994.5	175.7	176.1	24.61	9,090.4	662.1	215.6	21.0	194.60	1.108 Level 2		
17,500.0	8,190.2	17,291.0	7,994.5	177.6	178.0	24.64	9,190.0	652.7	215.3	18.5	196.80	1.094 Level 2		
17,600.0	8,189.9	17,391.0	7,994.4	179.5	179.9	24.67	9,289.5	643.3	215.1	16.1	199.01	1.081 Level 2		
17,700.0	8,189.6	17,491.0	7,994.3	181.5	181.9	24.70	9,389.1	633.8	214.9	13.7	201.21	1.068 Level 2		
17,800.0	8,189.2	17,591.0	7,994.3	183.4	183.8	24.73	9,488.6	624.4	214.7	11.2	203.43	1.055 Level 2		
17,900.0	8,188.9	17,691.0	7,994.2	185.3	185.7	24.76	9,588.2	615.0	214.4	8.8	205.64	1.043 Level 2		
18,000.0	8,188.6	17,791.0	7,994.1	187.3	187.7	24.79	9,687.7	605.5	214.2	6.3	207.86	1.031 Level 2		
18,100.0	8,188.3	17,891.0	7,994.1	189.2	189.6	24.82	9,787.3	596.1	214.0	3.9	210.07	1.019 Level 2		
18,160.4	8,188.1	17,951.4	7,994.0	190.1	190.8	24.83	9,847.4	590.4	213.8	2.6	211.21	1.012 Level 2		
18,182.1	8,188.0	17,966.2	7,994.0	190.5	191.1	24.84	9,862.1	589.0	213.9	2.4	211.54	1.011 Level 2, ES, SF		

Company:	Clear Creek Resource Partners	Local Co-ordinate Reference:	Well Salt Ranch Fee 501-1807H
Project:	SEC.18-T11N-R64W	TVD Reference:	WELL @ 5626.0ft (Original Well Elev)
Reference Site:	Salt Ranch Fee 1807H East Pad Sec.18-T11N-R64W	MD Reference:	WELL @ 5626.0ft (Original Well Elev)
Site Error:	0.0 ft	North Reference:	True
Reference Well:	Salt Ranch Fee 501-1807H	Survey Calculation Method:	Minimum Curvature
Well Error:	0.0 ft	Output errors are at	2.00 sigma
Reference Wellbore	Wellbore #1	Database:	US_EDM
Reference Design:	Plan #1 (9-26-17)	Offset TVD Reference:	Offset Datum

Offset Design												Offset Site Error:	0.0 ft
Survey Program: 0-MWD												Offset Well Error:	0.0 ft
Reference		Offset		Semi Major Axis			Distance						Warning
Measured Depth (ft)	Vertical Depth (ft)	Measured Depth (ft)	Vertical Depth (ft)	Reference (ft)	Offset (ft)	Highside Toolface (°)	Offset Wellbore Centre +N/-S (ft)	+E/-W (ft)	Between Centres (ft)	Between Ellipses (ft)	Minimum Separation (ft)	Separation Factor	
0.0	0.0	0.0	0.0	0.0	0.0	-89.30	0.4	-29.9	29.9				
100.0	100.0	100.0	100.0	0.1	0.1	-89.30	0.4	-29.9	29.9	29.6	0.22	132.815	
200.0	200.0	200.0	200.0	0.3	0.3	-89.30	0.4	-29.9	29.9	29.2	0.67	44.272	
300.0	300.0	300.0	300.0	0.6	0.6	-89.30	0.4	-29.9	29.9	28.7	1.12	26.563	
400.0	400.0	400.0	400.0	0.8	0.8	-89.30	0.4	-29.9	29.9	28.3	1.57	18.974	
500.0	500.0	500.0	500.0	1.0	1.0	-89.30	0.4	-29.9	29.9	27.8	2.02	14.757	CC, ES
600.0	600.0	600.0	600.0	1.2	1.2	152.96	0.4	-29.9	31.0	28.6	2.46	12.627	
700.0	699.9	699.9	699.9	1.4	1.5	155.90	0.4	-29.9	34.6	31.7	2.88	11.986	SF
800.0	799.7	799.7	799.7	1.6	1.7	159.64	0.4	-29.9	40.6	37.3	3.32	12.228	
900.0	899.3	899.3	899.3	1.9	1.9	163.30	0.4	-29.9	49.3	45.5	3.77	13.088	
1,000.0	998.6	998.6	998.6	2.1	2.1	166.45	0.4	-29.9	60.7	56.4	4.22	14.386	
1,015.5	1,014.0	1,014.1	1,014.1	2.2	2.2	166.87	0.3	-29.8	62.6	58.4	4.28	14.630	
1,100.0	1,097.7	1,098.4	1,098.4	2.4	2.3	167.99	-0.9	-29.7	73.3	68.7	4.63	15.826	
1,200.0	1,196.8	1,198.5	1,198.4	2.7	2.5	167.45	-4.8	-29.3	85.0	79.9	5.03	16.895	
1,300.0	1,295.8	1,298.7	1,298.4	3.0	2.7	165.58	-11.3	-28.7	95.7	90.3	5.45	17.569	
1,400.0	1,394.9	1,398.5	1,397.9	3.4	2.9	162.91	-20.0	-27.8	105.9	100.0	5.90	17.959	
1,500.0	1,494.0	1,497.9	1,496.8	3.7	3.1	160.57	-29.0	-27.0	116.1	109.7	6.36	18.246	
1,600.0	1,593.1	1,597.3	1,595.8	4.0	3.3	158.60	-38.0	-26.1	126.5	119.7	6.85	18.472	
1,700.0	1,692.2	1,696.7	1,694.7	4.3	3.6	156.94	-47.1	-25.2	137.0	129.7	7.35	18.649	
1,800.0	1,791.3	1,796.0	1,793.7	4.7	3.8	155.51	-56.1	-24.3	147.6	139.8	7.86	18.789	
1,900.0	1,890.4	1,895.4	1,892.6	5.0	4.1	154.28	-65.1	-23.4	158.3	150.0	8.38	18.899	
2,000.0	1,989.5	1,994.8	1,991.6	5.3	4.3	153.20	-74.1	-22.5	169.1	160.2	8.91	18.987	
2,100.0	2,088.6	2,094.2	2,090.6	5.7	4.6	152.25	-83.1	-21.6	179.9	170.5	9.44	19.058	
2,200.0	2,187.7	2,193.5	2,189.5	6.0	4.8	151.41	-92.2	-20.8	190.8	180.8	9.98	19.115	
2,300.0	2,286.8	2,292.9	2,288.5	6.4	5.1	150.66	-101.2	-19.9	201.6	191.1	10.52	19.161	
2,400.0	2,385.8	2,392.3	2,387.4	6.7	5.4	149.99	-110.2	-19.0	212.6	201.5	11.07	19.198	
2,500.0	2,484.9	2,491.6	2,486.4	7.0	5.6	149.38	-119.2	-18.1	223.5	211.9	11.62	19.228	
2,600.0	2,584.0	2,591.0	2,585.3	7.4	5.9	148.83	-128.3	-17.2	234.5	222.3	12.18	19.253	
2,700.0	2,683.1	2,690.4	2,684.3	7.7	6.2	148.33	-137.3	-16.3	245.5	232.7	12.74	19.274	
2,800.0	2,782.2	2,789.8	2,783.3	8.1	6.4	147.87	-146.3	-15.4	256.5	243.2	13.30	19.291	
2,900.0	2,881.3	2,889.1	2,882.2	8.4	6.7	147.45	-155.3	-14.5	267.5	253.6	13.86	19.305	
3,000.0	2,980.4	2,988.5	2,981.2	8.7	7.0	147.06	-164.4	-13.7	278.5	264.1	14.42	19.316	
3,100.0	3,079.5	3,087.9	3,080.1	9.1	7.3	146.71	-173.4	-12.8	289.6	274.6	14.98	19.326	
3,200.0	3,178.6	3,187.2	3,179.1	9.4	7.5	146.37	-182.4	-11.9	300.6	285.1	15.55	19.334	
3,300.0	3,277.7	3,286.6	3,278.1	9.8	7.8	146.07	-191.4	-11.0	311.7	295.6	16.12	19.340	
3,400.0	3,376.8	3,386.0	3,377.0	10.1	8.1	145.78	-200.4	-10.1	322.8	306.1	16.68	19.345	
3,500.0	3,475.8	3,485.4	3,476.0	10.4	8.4	145.51	-209.5	-9.2	333.9	316.6	17.25	19.350	
3,600.0	3,574.9	3,584.7	3,574.9	10.8	8.6	145.26	-218.5	-8.3	344.9	327.1	17.82	19.353	
3,700.0	3,674.0	3,684.1	3,673.9	11.1	8.9	145.03	-227.5	-7.4	356.0	337.6	18.39	19.356	
3,800.0	3,773.1	3,783.5	3,772.8	11.5	9.2	144.80	-236.5	-6.6	367.1	348.2	18.97	19.358	
3,900.0	3,872.2	3,882.9	3,871.8	11.8	9.5	144.60	-245.6	-5.7	378.2	358.7	19.54	19.360	
4,000.0	3,971.3	3,982.2	3,970.8	12.2	9.8	144.40	-254.6	-4.8	389.4	369.2	20.11	19.361	
4,100.0	4,070.4	4,081.6	4,069.7	12.5	10.0	144.22	-263.6	-3.9	400.5	379.8	20.68	19.362	
4,200.0	4,169.5	4,181.0	4,168.7	12.9	10.3	144.04	-272.6	-3.0	411.6	390.3	21.26	19.363	
4,300.0	4,268.6	4,280.3	4,267.6	13.2	10.6	143.87	-281.6	-2.1	422.7	400.9	21.83	19.363	
4,400.0	4,367.7	4,379.7	4,366.6	13.5	10.9	143.72	-290.7	-1.2	433.8	411.4	22.40	19.363	
4,500.0	4,466.7	4,479.1	4,465.6	13.9	11.2	143.57	-299.7	-0.3	445.0	422.0	22.98	19.363	
4,600.0	4,565.8	4,578.5	4,564.5	14.2	11.5	143.42	-308.7	0.5	456.1	432.5	23.55	19.363	
4,700.0	4,664.9	4,677.8	4,663.5	14.6	11.7	143.29	-317.7	1.4	467.2	443.1	24.13	19.362	
4,800.0	4,764.0	4,777.2	4,762.4	14.9	12.0	143.16	-326.8	2.3	478.4	453.6	24.71	19.362	
4,900.0	4,863.1	4,876.6	4,861.4	15.3	12.3	143.04	-335.8	3.2	489.5	464.2	25.28	19.361	

CC - Min centre to center distance or convergent point, SF - min separation factor, ES - min ellipse separation

Company:	Clear Creek Resource Partners	Local Co-ordinate Reference:	Well Salt Ranch Fee 501-1807H
Project:	SEC.18-T11N-R64W	TVD Reference:	WELL @ 5626.0ft (Original Well Elev)
Reference Site:	Salt Ranch Fee 1807H East Pad Sec.18-T11N-R64W	MD Reference:	WELL @ 5626.0ft (Original Well Elev)
Site Error:	0.0 ft	North Reference:	True
Reference Well:	Salt Ranch Fee 501-1807H	Survey Calculation Method:	Minimum Curvature
Well Error:	0.0 ft	Output errors are at	2.00 sigma
Reference Wellbore	Wellbore #1	Database:	US_EDM
Reference Design:	Plan #1 (9-26-17)	Offset TVD Reference:	Offset Datum

Company:	Clear Creek Resource Partners	Local Co-ordinate Reference:	Well Salt Ranch Fee 501-1807H
Project:	SEC.18-T11N-R64W	TVD Reference:	WELL @ 5626.0ft (Original Well Elev)
Reference Site:	Salt Ranch Fee 1807H East Pad Sec.18-T11N-R64W	MD Reference:	WELL @ 5626.0ft (Original Well Elev)
Site Error:	0.0 ft	North Reference:	True
Reference Well:	Salt Ranch Fee 501-1807H	Survey Calculation Method:	Minimum Curvature
Well Error:	0.0 ft	Output errors are at	2.00 sigma
Reference Wellbore	Wellbore #1	Database:	US_EDM
Reference Design:	Plan #1 (9-26-17)	Offset TVD Reference:	Offset Datum

Salt Ranch Fee 1807H East Pad Sec.18-T11N-R64W - Salt Ranch Fee 203-1807H - Wellbore #1 - Plan													Offset Site Error:	0.0 ft
Survey Program:		0-MWD											Offset Well Error:	0.0 ft
Reference		Offset		Semi Major Axis			Distance							Warning
Measured Depth (ft)	Vertical Depth (ft)	Measured Depth (ft)	Vertical Depth (ft)	Reference (ft)	Offset (ft)	Highside Toolface (°)	Offset Wellbore Centre +N/-S (ft)	+E/-W (ft)	Between Centres (ft)	Between Ellipses (ft)	Minimum Separation (ft)	Separation Factor		
0.0	0.0	0.0	0.0	0.0	0.0	-89.30	1.1	-90.1	90.1					
100.0	100.0	100.0	100.0	0.1	0.1	-89.30	1.1	-90.1	90.1	89.9	0.22	400.905		
200.0	200.0	200.0	200.0	0.3	0.3	-89.30	1.1	-90.1	90.1	89.4	0.67	133.635		
300.0	300.0	300.0	300.0	0.6	0.6	-89.30	1.1	-90.1	90.1	89.0	1.12	80.181		
400.0	400.0	400.0	400.0	0.8	0.8	-89.30	1.1	-90.1	90.1	88.5	1.57	57.272		
500.0	500.0	500.0	500.0	1.0	1.0	-89.30	1.1	-90.1	90.1	88.1	2.02	44.545 CC, ES		
600.0	600.0	600.0	600.0	1.2	1.2	152.20	1.1	-90.1	91.3	88.8	2.46	37.161		
700.0	699.9	697.9	697.9	1.4	1.4	152.84	0.4	-91.2	95.8	93.0	2.86	33.511		
800.0	799.7	795.3	795.2	1.6	1.6	153.26	-1.5	-94.4	104.9	101.6	3.27	32.091		
900.0	899.3	892.1	891.8	1.9	1.8	153.44	-4.7	-99.6	118.3	114.6	3.70	32.019 SF		
1,000.0	998.6	987.8	987.1	2.1	2.0	153.45	-9.2	-106.9	136.2	132.0	4.14	32.879		
1,015.5	1,014.0	1,002.6	1,001.8	2.2	2.1	153.43	-10.0	-108.2	139.3	135.1	4.21	33.080		
1,100.0	1,097.7	1,082.5	1,081.2	2.4	2.3	153.30	-14.8	-116.1	157.5	152.9	4.59	34.302		
1,200.0	1,196.8	1,177.8	1,175.6	2.7	2.6	152.81	-21.5	-127.2	180.7	175.6	5.06	35.715		
1,300.0	1,295.8	1,274.9	1,271.8	3.0	2.8	152.36	-28.6	-138.8	204.3	198.7	5.54	36.889		
1,400.0	1,394.9	1,372.1	1,368.0	3.4	3.2	152.00	-35.8	-150.5	227.9	221.8	6.03	37.814		
1,500.0	1,494.0	1,469.3	1,464.2	3.7	3.5	151.71	-42.9	-162.1	251.4	244.9	6.52	38.553		
1,600.0	1,593.1	1,566.4	1,560.4	4.0	3.8	151.47	-50.0	-173.7	275.0	268.0	7.03	39.136		
1,700.0	1,692.2	1,663.6	1,656.6	4.3	4.1	151.27	-57.1	-185.4	298.6	291.1	7.54	39.629		
1,800.0	1,791.3	1,760.8	1,752.8	4.7	4.4	151.09	-64.2	-197.0	322.2	314.2	8.05	40.033		
1,900.0	1,890.4	1,858.0	1,849.0	5.0	4.8	150.94	-71.3	-208.7	345.8	337.3	8.57	40.372		
2,000.0	1,989.5	1,955.1	1,945.2	5.3	5.1	150.81	-78.4	-220.3	369.4	360.3	9.09	40.658		
2,100.0	2,088.6	2,052.3	2,041.5	5.7	5.4	150.70	-85.5	-232.0	393.0	383.4	9.61	40.904		
2,200.0	2,187.7	2,149.5	2,137.7	6.0	5.7	150.60	-92.6	-243.6	416.6	406.5	10.13	41.115		
2,300.0	2,286.8	2,246.6	2,233.9	6.4	6.1	150.51	-99.8	-255.3	440.2	429.6	10.66	41.299		
2,400.0	2,385.8	2,343.8	2,330.1	6.7	6.4	150.42	-106.9	-266.9	463.9	452.7	11.19	41.460		
2,500.0	2,484.9	2,441.0	2,426.3	7.0	6.8	150.35	-114.0	-278.6	487.5	475.7	11.72	41.602		

Company:	Clear Creek Resource Partners	Local Co-ordinate Reference:	Well Salt Ranch Fee 501-1807H
Project:	SEC.18-T11N-R64W	TVD Reference:	WELL @ 5626.0ft (Original Well Elev)
Reference Site:	Salt Ranch Fee 1807H East Pad Sec.18-T11N-R64W	MD Reference:	WELL @ 5626.0ft (Original Well Elev)
Site Error:	0.0 ft	North Reference:	True
Reference Well:	Salt Ranch Fee 501-1807H	Survey Calculation Method:	Minimum Curvature
Well Error:	0.0 ft	Output errors are at	2.00 sigma
Reference Wellbore	Wellbore #1	Database:	US_EDM
Reference Design:	Plan #1 (9-26-17)	Offset TVD Reference:	Offset Datum

Offset Design													Offset Site Error:	0.0 ft
Survey Program: 0-MWD													Offset Well Error:	0.0 ft
Reference		Offset		Semi Major Axis			Distance							Warning
Measured Depth (ft)	Vertical Depth (ft)	Measured Depth (ft)	Vertical Depth (ft)	Reference (ft)	Offset (ft)	Highside Toolface (°)	Offset Wellbore Centre +N/-S (ft)	+E/-W (ft)	Between Centres (ft)	Between Ellipses (ft)	Minimum Separation (ft)	Separation Factor		
0.0	0.0	0.0	0.0	0.0	0.0	-89.30	1.8	-150.1	150.1					
100.0	100.0	100.0	100.0	0.1	0.1	-89.30	1.8	-150.1	150.1	149.9	0.22	667.765		
200.0	200.0	200.0	200.0	0.3	0.3	-89.30	1.8	-150.1	150.1	149.4	0.67	222.588 CC, ES		
300.0	300.0	296.4	296.4	0.6	0.5	-89.45	1.5	-151.2	151.3	150.2	1.10	137.318		
400.0	400.0	392.6	392.6	0.8	0.7	-89.86	0.4	-154.7	154.9	153.4	1.53	101.063		
500.0	500.0	488.6	488.4	1.0	1.0	-90.51	-1.4	-160.5	160.9	158.9	1.98	81.185		
600.0	600.0	584.2	583.5	1.2	1.2	149.93	-3.9	-168.5	170.5	168.1	2.41	70.707		
700.0	699.9	678.9	677.7	1.4	1.5	149.47	-7.1	-178.7	184.7	181.8	2.85	64.872		
800.0	799.7	772.6	770.4	1.6	1.8	149.21	-11.0	-191.0	203.5	200.2	3.30	61.693		
900.0	899.3	864.8	861.5	1.9	2.1	149.11	-15.4	-205.2	226.7	223.0	3.76	60.275		
1,000.0	998.6	955.4	950.5	2.1	2.5	149.11	-20.4	-221.1	254.4	250.1	4.24	60.042 SF		
1,015.5	1,014.0	969.4	964.2	2.2	2.5	149.12	-21.2	-223.8	259.1	254.8	4.31	60.089		
1,100.0	1,097.7	1,044.4	1,037.5	2.4	2.8	149.30	-25.9	-238.8	285.6	280.9	4.71	60.609		
1,200.0	1,196.8	1,132.0	1,122.8	2.7	3.3	149.37	-32.0	-258.1	318.9	313.7	5.20	61.368		
1,300.0	1,295.8	1,222.4	1,210.3	3.0	3.7	149.34	-38.7	-279.6	354.0	348.3	5.70	62.124		
1,400.0	1,394.9	1,315.9	1,300.8	3.4	4.2	149.31	-45.7	-302.1	389.3	383.1	6.21	62.696		
1,500.0	1,494.0	1,409.5	1,391.4	3.7	4.7	149.29	-52.8	-324.5	424.7	417.9	6.72	63.151		
1,600.0	1,593.1	1,503.0	1,481.9	4.0	5.2	149.27	-59.8	-347.0	460.0	452.7	7.25	63.476		
1,700.0	1,692.2	1,596.6	1,572.5	4.3	5.7	149.25	-66.8	-369.5	495.3	487.5	7.77	63.715		

Company:	Clear Creek Resource Partners	Local Co-ordinate Reference:	Well Salt Ranch Fee 501-1807H
Project:	SEC.18-T11N-R64W	TVD Reference:	WELL @ 5626.0ft (Original Well Elev)
Reference Site:	Salt Ranch Fee 1807H East Pad Sec.18-T11N-R64W	MD Reference:	WELL @ 5626.0ft (Original Well Elev)
Site Error:	0.0 ft	North Reference:	True
Reference Well:	Salt Ranch Fee 501-1807H	Survey Calculation Method:	Minimum Curvature
Well Error:	0.0 ft	Output errors are at	2.00 sigma
Reference Wellbore	Wellbore #1	Database:	US_EDM
Reference Design:	Plan #1 (9-26-17)	Offset TVD Reference:	Offset Datum

Offset Design		Salt Ranch Fee 1807H East Pad Sec.18-T11N-R64W - Salt Ranch Fee 502-1807H - Wellbore #1 - Plan											Offset Site Error:		0.0 ft
Survey Program: 0-MWD													Offset Well Error:		0.0 ft
Reference		Offset		Semi Major Axis			Distance							Warning	
Measured Depth	Vertical Depth	Measured Depth	Vertical Depth	Reference	Offset	Highside Toolface	Offset Wellbore Centre		Between Centres	Between Ellipses	Minimum Separation	Separation Factor			
(ft)	(ft)	(ft)	(ft)	(ft)	(ft)	(°)	+N/-S (ft)	+E/-W (ft)	(ft)	(ft)	(ft)				
0.0	0.0	0.0	0.0	0.0	0.0	-89.30	0.7	-60.0	60.0						
100.0	100.0	100.0	100.0	0.1	0.1	-89.30	0.7	-60.0	60.0	59.8	0.22	266.860			
200.0	200.0	200.0	200.0	0.3	0.3	-89.30	0.7	-60.0	60.0	59.3	0.67	88.953			
300.0	300.0	300.0	300.0	0.6	0.6	-89.30	0.7	-60.0	60.0	58.9	1.12	53.372			
400.0	400.0	400.0	400.0	0.8	0.8	-89.30	0.7	-60.0	60.0	58.4	1.57	38.123			
500.0	500.0	500.0	500.0	1.0	1.0	-89.30	0.7	-60.0	60.0	58.0	2.02	29.651	CC, ES		
600.0	600.0	600.0	600.0	1.2	1.2	152.40	0.7	-60.0	61.1	58.7	2.46	24.894			
700.0	699.9	699.9	699.9	1.4	1.5	153.98	0.7	-60.0	64.6	61.8	2.88	22.424			
800.0	799.7	799.7	799.7	1.6	1.7	156.28	0.7	-60.0	70.6	67.3	3.32	21.253	SF		
900.0	899.3	898.3	898.3	1.9	1.9	158.07	-0.3	-60.7	79.7	75.9	3.74	21.291			
1,000.0	998.6	996.4	996.3	2.1	2.1	158.64	-3.3	-63.0	92.5	88.3	4.16	22.255			
1,015.5	1,014.0	1,011.5	1,011.4	2.2	2.1	158.65	-4.0	-63.5	94.8	90.6	4.22	22.455			
1,100.0	1,097.7	1,093.9	1,093.6	2.4	2.3	158.26	-8.3	-66.7	108.1	103.5	4.58	23.617			
1,200.0	1,196.8	1,191.7	1,191.0	2.7	2.5	157.08	-15.1	-71.8	124.9	119.8	5.02	24.878			
1,300.0	1,295.8	1,290.2	1,289.1	3.0	2.7	156.04	-22.3	-77.2	141.9	136.4	5.48	25.902			
1,400.0	1,394.9	1,388.7	1,387.2	3.4	2.9	155.23	-29.4	-82.5	158.9	153.0	5.95	26.714			
1,500.0	1,494.0	1,487.2	1,485.3	3.7	3.2	154.58	-36.6	-87.9	176.0	169.5	6.43	27.364			
1,600.0	1,593.1	1,585.7	1,583.4	4.0	3.4	154.04	-43.7	-93.2	193.1	186.1	6.92	27.892			
1,700.0	1,692.2	1,684.2	1,681.6	4.3	3.7	153.58	-50.8	-98.6	210.1	202.7	7.42	28.323			
1,800.0	1,791.3	1,782.8	1,779.7	4.7	3.9	153.20	-58.0	-103.9	227.3	219.3	7.92	28.684			
1,900.0	1,890.4	1,881.3	1,877.8	5.0	4.2	152.87	-65.1	-109.2	244.4	235.9	8.43	28.986			
2,000.0	1,989.5	1,979.8	1,975.9	5.3	4.5	152.58	-72.3	-114.6	261.5	252.6	8.94	29.242			
2,100.0	2,088.6	2,078.3	2,074.0	5.7	4.7	152.33	-79.4	-119.9	278.6	269.2	9.46	29.461			
2,200.0	2,187.7	2,176.8	2,172.1	6.0	5.0	152.11	-86.6	-125.3	295.8	285.8	9.97	29.651			
2,300.0	2,286.8	2,275.3	2,270.2	6.4	5.3	151.91	-93.7	-130.6	312.9	302.4	10.49	29.815			
2,400.0	2,385.8	2,373.8	2,368.3	6.7	5.5	151.73	-100.9	-136.0	330.0	319.0	11.02	29.958			
2,500.0	2,484.9	2,472.4	2,466.4	7.0	5.8	151.58	-108.0	-141.3	347.2	335.6	11.54	30.085			
2,600.0	2,584.0	2,570.9	2,564.5	7.4	6.1	151.43	-115.2	-146.6	364.3	352.2	12.06	30.197			
2,700.0	2,683.1	2,669.4	2,662.7	7.7	6.3	151.30	-122.3	-152.0	381.5	368.9	12.59	30.297			
2,800.0	2,782.2	2,767.9	2,760.8	8.1	6.6	151.18	-129.4	-157.3	398.6	385.5	13.12	30.386			
2,900.0	2,881.3	2,866.4	2,858.9	8.4	6.9	151.07	-136.6	-162.7	415.8	402.1	13.65	30.467			
3,000.0	2,980.4	2,964.9	2,957.0	8.7	7.2	150.97	-143.7	-168.0	432.9	418.7	14.18	30.539			
3,100.0	3,079.5	3,063.5	3,055.1	9.1	7.5	150.87	-150.9	-173.4	450.1	435.4	14.71	30.605			
3,200.0	3,178.6	3,162.0	3,153.2	9.4	7.7	150.78	-158.0	-178.7	467.2	452.0	15.24	30.665			
3,300.0	3,277.7	3,260.5	3,251.3	9.8	8.0	150.70	-165.2	-184.0	484.4	468.6	15.77	30.719			

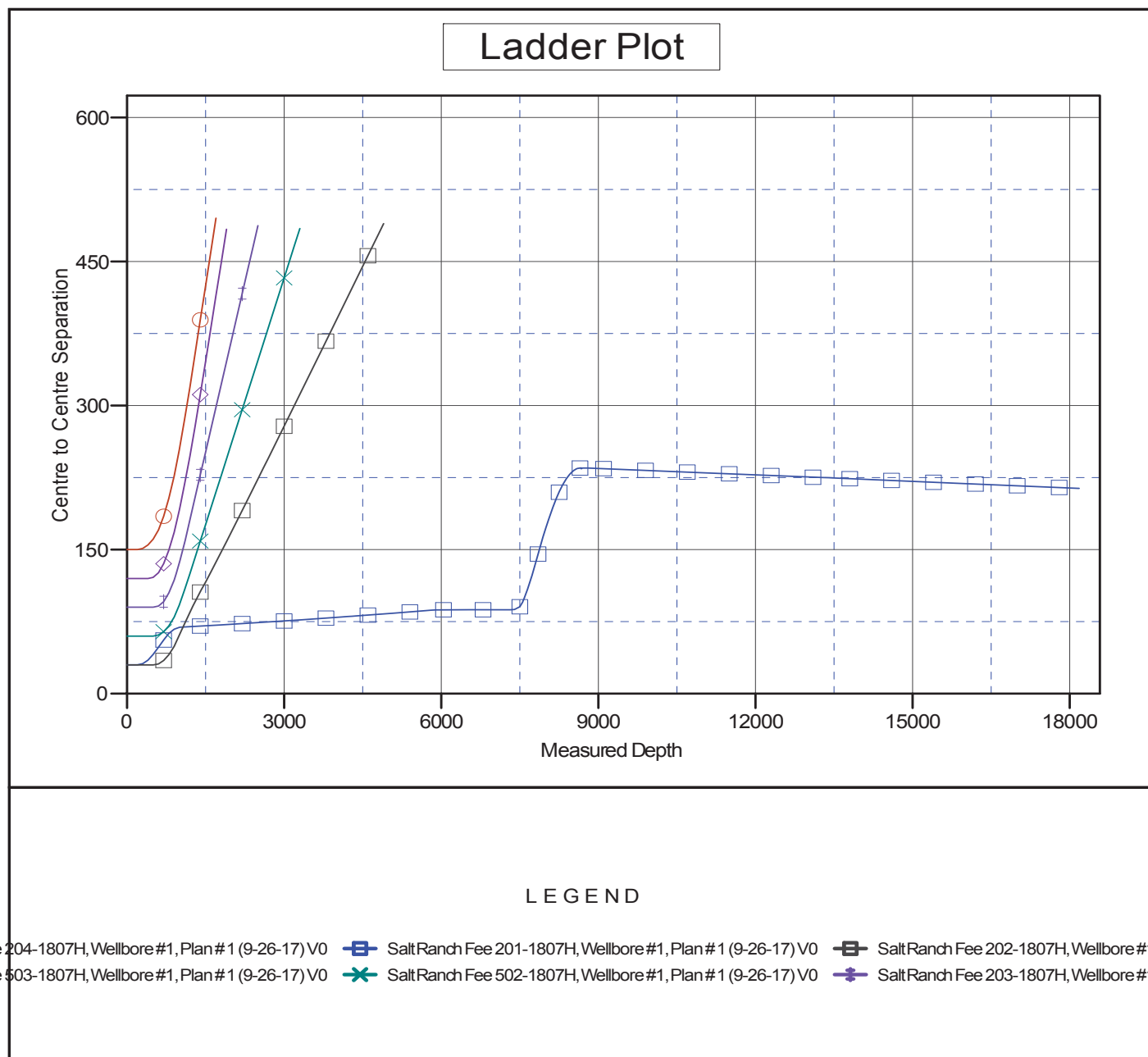
Company:	Clear Creek Resource Partners	Local Co-ordinate Reference:	Well Salt Ranch Fee 501-1807H
Project:	SEC.18-T11N-R64W	TVD Reference:	WELL @ 5626.0ft (Original Well Elev)
Reference Site:	Salt Ranch Fee 1807H East Pad Sec.18-T11N-R64W	MD Reference:	WELL @ 5626.0ft (Original Well Elev)
Site Error:	0.0 ft	North Reference:	True
Reference Well:	Salt Ranch Fee 501-1807H	Survey Calculation Method:	Minimum Curvature
Well Error:	0.0 ft	Output errors are at	2.00 sigma
Reference Wellbore	Wellbore #1	Database:	US_EDM
Reference Design:	Plan #1 (9-26-17)	Offset TVD Reference:	Offset Datum

Offset Design													Offset Site Error:	0.0 ft
Survey Program: 0-MWD													Offset Well Error:	0.0 ft
Reference		Offset		Semi Major Axis			Distance						Warning	
Measured Depth (ft)	Vertical Depth (ft)	Measured Depth (ft)	Vertical Depth (ft)	Reference (ft)	Offset (ft)	Highside Toolface (°)	Offset Wellbore Centre +N/-S (ft)	+E/-W (ft)	Between Centres (ft)	Between Ellipses (ft)	Minimum Separation (ft)	Separation Factor		
0.0	0.0	0.0	0.0	0.0	0.0	-89.30	1.5	-120.0	120.0					
100.0	100.0	100.0	100.0	0.1	0.1	-89.30	1.5	-120.0	120.0	119.7	0.22	533.720		
200.0	200.0	200.0	200.0	0.3	0.3	-89.30	1.5	-120.0	120.0	119.3	0.67	177.907		
300.0	300.0	300.0	300.0	0.6	0.6	-89.30	1.5	-120.0	120.0	118.8	1.12	106.744		
400.0	400.0	400.0	400.0	0.8	0.8	-89.30	1.5	-120.0	120.0	118.4	1.57	76.246 CC, ES		
500.0	500.0	497.1	497.1	1.0	1.0	-89.50	1.1	-121.1	121.2	119.2	2.00	60.575		
600.0	600.0	594.0	593.9	1.2	1.2	151.32	-0.1	-124.6	125.9	123.5	2.41	52.267		
700.0	699.9	690.4	690.2	1.4	1.4	151.19	-2.1	-130.4	135.4	132.5	2.82	47.945		
800.0	799.7	786.1	785.4	1.6	1.6	151.21	-4.7	-138.4	149.4	146.2	3.26	45.885		
900.0	899.3	880.6	879.3	1.9	1.9	151.32	-8.1	-148.6	168.1	164.4	3.71	45.365 SF		
1,000.0	998.6	973.7	971.6	2.1	2.2	151.49	-12.2	-160.7	191.3	187.1	4.17	45.896		
1,015.5	1,014.0	988.1	985.7	2.2	2.2	151.52	-12.9	-162.8	195.3	191.1	4.24	46.054		
1,100.0	1,097.7	1,065.4	1,062.1	2.4	2.5	151.72	-16.9	-174.8	218.1	213.5	4.63	47.114		
1,200.0	1,196.8	1,155.9	1,151.0	2.7	2.8	151.76	-22.3	-190.6	247.2	242.1	5.10	48.447		
1,300.0	1,295.8	1,245.2	1,238.3	3.0	3.2	151.63	-28.2	-208.2	278.3	272.7	5.58	49.841		
1,400.0	1,394.9	1,333.1	1,323.9	3.4	3.6	151.39	-34.6	-227.5	311.5	305.4	6.08	51.259		
1,500.0	1,494.0	1,426.4	1,414.3	3.7	4.0	151.11	-41.8	-249.0	345.9	339.3	6.58	52.540		
1,600.0	1,593.1	1,520.3	1,505.4	4.0	4.5	150.88	-49.1	-270.7	380.3	373.2	7.10	53.579		
1,700.0	1,692.2	1,614.1	1,596.4	4.3	4.9	150.69	-56.4	-292.4	414.8	407.1	7.62	54.449		
1,800.0	1,791.3	1,708.0	1,687.4	4.7	5.4	150.53	-63.7	-314.1	449.2	441.1	8.14	55.172		
1,900.0	1,890.4	1,801.9	1,778.5	5.0	5.9	150.39	-71.0	-335.9	483.6	475.0	8.67	55.781		

Company:	Clear Creek Resource Partners	Local Co-ordinate Reference:	Well Salt Ranch Fee 501-1807H
Project:	SEC.18-T11N-R64W	TVD Reference:	WELL @ 5626.0ft (Original Well Elev)
Reference Site:	Salt Ranch Fee 1807H East Pad Sec.18-T11N-R64W	MD Reference:	WELL @ 5626.0ft (Original Well Elev)
Site Error:	0.0 ft	North Reference:	True
Reference Well:	Salt Ranch Fee 501-1807H	Survey Calculation Method:	Minimum Curvature
Well Error:	0.0 ft	Output errors are at	2.00 sigma
Reference Wellbore	Wellbore #1	Database:	US_EDM
Reference Design:	Plan #1 (9-26-17)	Offset TVD Reference:	Offset Datum

Reference Depths are relative to WELL @ 5626.0ft (Original Well Elev)
 Offset Depths are relative to Offset Datum
 Central Meridian is -105.500000

Coordinates are relative to: Salt Ranch Fee 501-1807H
 Coordinate System is US State Plane 1983, Colorado Northern Zone
 Grid Convergence at Surface is: 0.59°



Company:	Clear Creek Resource Partners	Local Co-ordinate Reference:	Well Salt Ranch Fee 501-1807H
Project:	SEC.18-T11N-R64W	TVD Reference:	WELL @ 5626.0ft (Original Well Elev)
Reference Site:	Salt Ranch Fee 1807H East Pad Sec.18-T11N-R64W	MD Reference:	WELL @ 5626.0ft (Original Well Elev)
Site Error:	0.0 ft	North Reference:	True
Reference Well:	Salt Ranch Fee 501-1807H	Survey Calculation Method:	Minimum Curvature
Well Error:	0.0 ft	Output errors are at	2.00 sigma
Reference Wellbore	Wellbore #1	Database:	US_EDM
Reference Design:	Plan #1 (9-26-17)	Offset TVD Reference:	Offset Datum

Reference Depths are relative to WELL @ 5626.0ft (Original Well Elev)

Offset Depths are relative to Offset Datum

Central Meridian is -105.500000

Coordinates are relative to: Salt Ranch Fee 501-1807H

Coordinate System is US State Plane 1983, Colorado Northern Zone

Grid Convergence at Surface is: 0.59°

