

WELL CERTIFICATION EXHIBIT COYOTE TRAILS 34S-20-16N

SW1/4 SE1/4 SEC. 28, T1N, R68W, 6TH P.M.

NW COR. SEC. 28
FOUND #6 REB.
W/ 3-1/4" A.C.
PLS 13155

N 89°25'55" E

2683.83'

N 89°23'54" E

2684.71'

NE COR. SEC. 28
FOUND #6 REB.
W/ 2" A.C.
PLS 25937

N 1/4 COR. SEC. 28
FOUND #6 REB.

2658.93'

N 00°51'02" W

2650.14' (C)

N 00°42'38" W

2643.58'

S 00°33'35" E

W 1/4 COR.
SEC. 28
FOUND #6 REB.
W/ 2" A.C.
ILLEGIBLE

S 89°14'39" W

2677.38' (C)

28

S 89°15'29" W

2677.74' (C)

C 1/4 COR. SEC. 28
(CALCULATED FROM
RECORDS OF SURVEY)

E 1/4 COR.
SEC. 28
FOUND 2-3/8"
ALUM. PIPE
W/ 3-1/4" A.C.
PLS 18482

2658.98'

N 00°51'06" W

2651.29' (C)

N 00°42'52" W

2642.70'

S 00°34'04" E

SW COR. SEC. 28
FOUND #6 REB.
W/ 2.5" A.C.
PLS 28656

S 89°04'46" W

2670.97'

S 89°04'25" W

2671.01'

S 1/4 COR. SEC. 28
FOUND ALUM. PIPE
W/ 3-1/4" A.C.
PLS 4846

COYOTE TRAILS
34S-20-16N

1144'

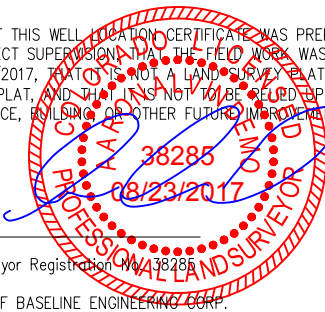
S 70°53'19" E
4756.92'

WELL BORES
CONTINUE
INTO SECTION
27 (SHEET 2)

SE COR. SEC. 28
FOUND #6 REB.
W/ 3-1/4" A.C.
PLS 13258

I HEREBY CERTIFY THAT THIS WELL LOCATION CERTIFICATE WAS PREPARED BY ME, OR UNDER MY DIRECT SUPERVISION, THAT THE FIELD WORK WAS COMPLETED ON 06/30/2017, THAT THIS IS NOT A LAND SURVEY PLAT OR AN IMPROVEMENT SURVEY PLAT, AND THAT IT IS NOT TO BE RELIED UPON FOR ESTABLISHMENT OF FENCE, BUILDING OR OTHER FUTURE IMPROVEMENT LINES.

AARON A. DEMO
Professional Land Surveyor Registration No. 38285
State of Colorado
FOR AND ON BEHALF OF BASELINE ENGINEERING CORP.



N

0 1000'
Scale 1" = 1000' ft

SURFACE LOCATION
SEC. 28, T1N, R68W
GROUND ELEVATION = 5274'
PDOP = 1.5
LATITUDE = 40.017973°
LONGITUDE = -105.006317°
1144' FSL, 2031' FEL
ENTRY POINT LOCATION
SEC. 34, T1N, R68W
LATITUDE = 40.013629°
LONGITUDE = -104.990306°
460' FNL, 2452' FWL
BOTTOM HOLE LOCATION
SEC. 3, T1S, R68W
LATITUDE = 39.987040°
LONGITUDE = -104.990102°
150' FSL, 1997' FWL

NOTES:

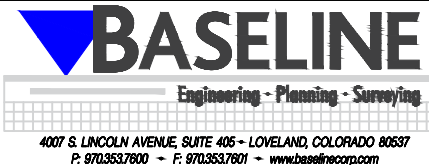
1. INDICATES SECTION CORNER
2. INDICATES CALCULATED CORNER
3. (C) INDICATES CALCULATED DIMENSION
4. ELEVATION BASED ON NAVD88 (GEOID12B)
5. BEARINGS DERIVED FROM COLORADO COORDINATE SYSTEM OF 1983 NORTH ZONE.
6. OPERATOR: TRAVIS WINNICKI
7. IMPROVEMENTS: SEE LOCATION DRAWING FOR ALL VISIBLE IMPROVEMENTS WITHIN 500' OF DISTURBED AREA.
8. WELL FOOTAGES ARE MEASURED AT RIGHT ANGLES TO THE SECTION LINES.

NEAREST CULTURAL ITEMS:

BUILDING: 1496' S
BUILDING UNIT: 1496' S
HIGH OCCUPANCY BUILDING UNIT: 4813' SW
DESIGNATED OUTSIDE ACTIVITY AREA: 5280' ±
PUBLIC ROAD: WELD COUNTY ROAD 4 1342' SW
ABOVE GROUND UTILITY: 1636' S
RAILROAD: 5280' ±
PROPERTY LINE: 643' W
SURFACE USE: GRASSLAND.
NEAREST EXISTING WELL: MEIKLE 2 376' E



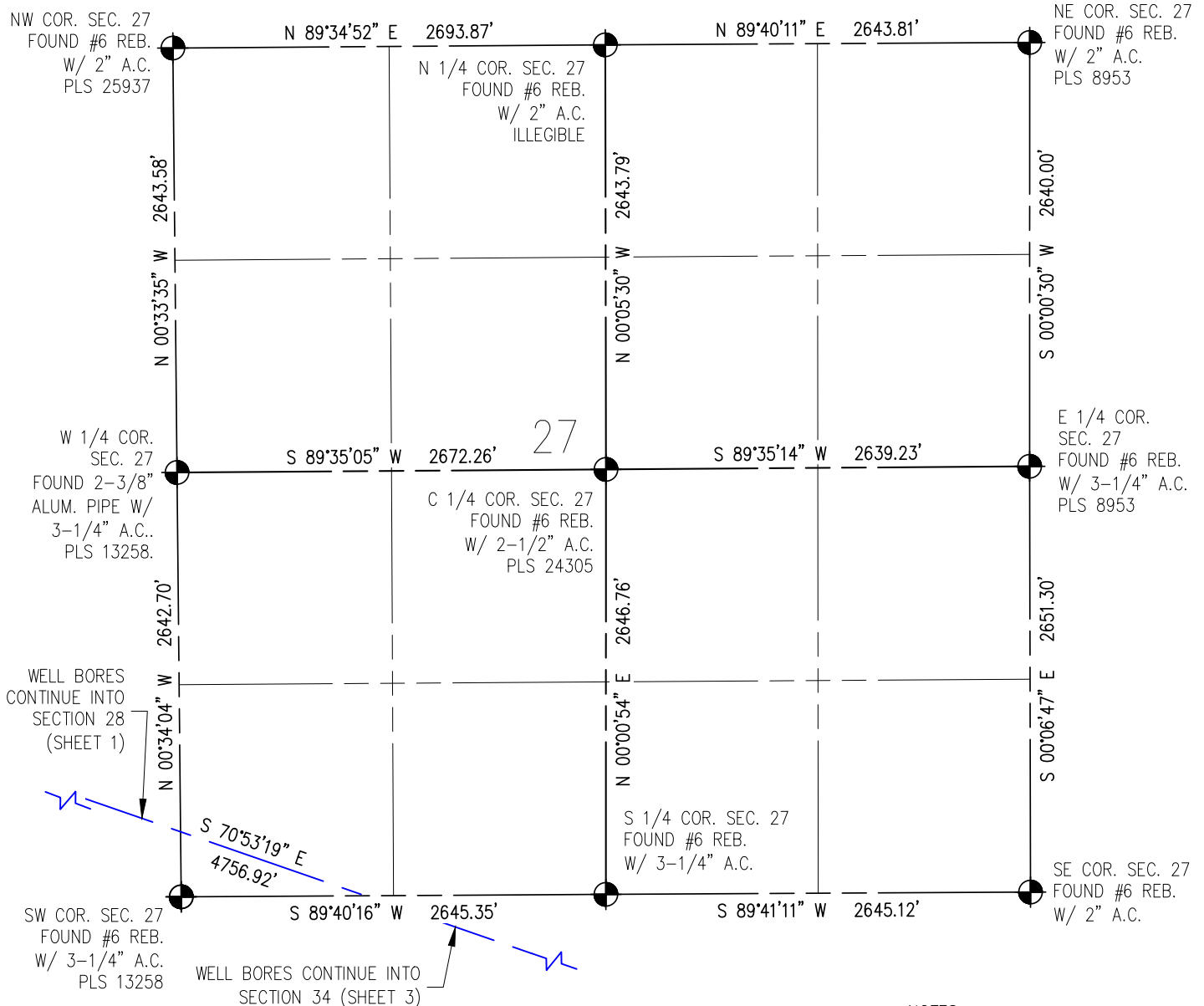
DRAWN BY	RPM	CHECKED BY	AAD
INITIAL SUBMITTAL	08/24/2017	REVISED	N/A
DRAWING SIZE	8.5" X 11"	JOB NO.	EXT01N68W28-01
SHEET	1 OF 4		



4007 S. LINCOLN AVENUE, SUITE 405 • LOVELAND, COLORADO 80537
P: 970.353.7800 • F: 970.353.7801 • www.baselinecorp.com

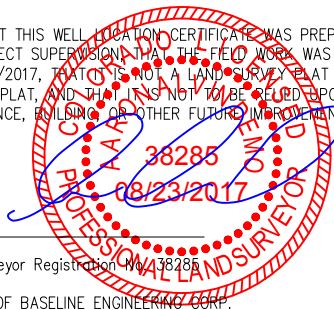
WELL CERTIFICATION EXHIBIT COYOTE TRAILS 34S-20-16N

SW1/4 SE1/4 SEC. 28, T1N, R68W, 6TH P.M.



I HEREBY CERTIFY THAT THIS WELL LOCATION CERTIFICATE WAS PREPARED BY ME, OR UNDER MY DIRECT SUPERVISION, THAT THE FIELD WORK WAS COMPLETED ON 06/30/2017, THAT THIS IS NOT A LAND SURVEY PLAT OR AN IMPROVEMENT SURVEY PLAT, AND THAT IT IS NOT TO BE RELIED UPON FOR ESTABLISHMENT OF FENCE, BUILDING OR OTHER FUTURE IMPROVEMENT LINES.

AARON A. DEMO
Professional Land Surveyor Registration No. 38285
State of Colorado
FOR AND ON BEHALF OF BASELINE ENGINEERING CORP.



N

0 1000'
Scale 1" = 1000' ft

SURFACE LOCATION
SEC. 28, T1N, R68W
GROUND ELEVATION = 5274'
PDOP = 1.5
LATITUDE = 40.017973°
LONGITUDE = -105.006317°
1144' FSL, 2031' FEL
ENTRY POINT LOCATION
SEC. 34, T1N, R68W
LATITUDE = 40.013629°
LONGITUDE = -104.990306°
460' FNL, 2452' FWL
BOTTOM HOLE LOCATION
SEC. 3, T1S, R68W
LATITUDE = 39.987040°
LONGITUDE = -104.990102°
150' FSL, 1997' FWL

NOTES:

1. INDICATES SECTION CORNER
2. INDICATES CALCULATED CORNER
3. (C) INDICATES CALCULATED DIMENSION
4. ELEVATION BASED ON NAVD88 (GEOID12B)
5. BEARINGS DERIVED FROM COLORADO COORDINATE SYSTEM OF 1983 NORTH ZONE.
6. OPERATOR: TRAVIS WINNICKI
7. IMPROVEMENTS: SEE LOCATION DRAWING FOR ALL VISIBLE IMPROVEMENTS WITHIN 500' OF DISTURBED AREA.
8. WELL FOOTAGES ARE MEASURED AT RIGHT ANGLES TO THE SECTION LINES.

NEAREST CULTURAL ITEMS:

BUILDING: 1496' S
BUILDING UNIT: 1496' S
HIGH OCCUPANCY BUILDING UNIT: 4813' SW
DESIGNATED OUTSIDE ACTIVITY AREA: 5280' +
PUBLIC ROAD: WELD COUNTY ROAD 4 1342' SW
ABOVE GROUND UTILITY: 1636' S
RAILROAD: 5280' +
PROPERTY LINE: 643' W
SURFACE USE: GRASSLAND
NEAREST EXISTING WELL: MEIKLE 2 376' E



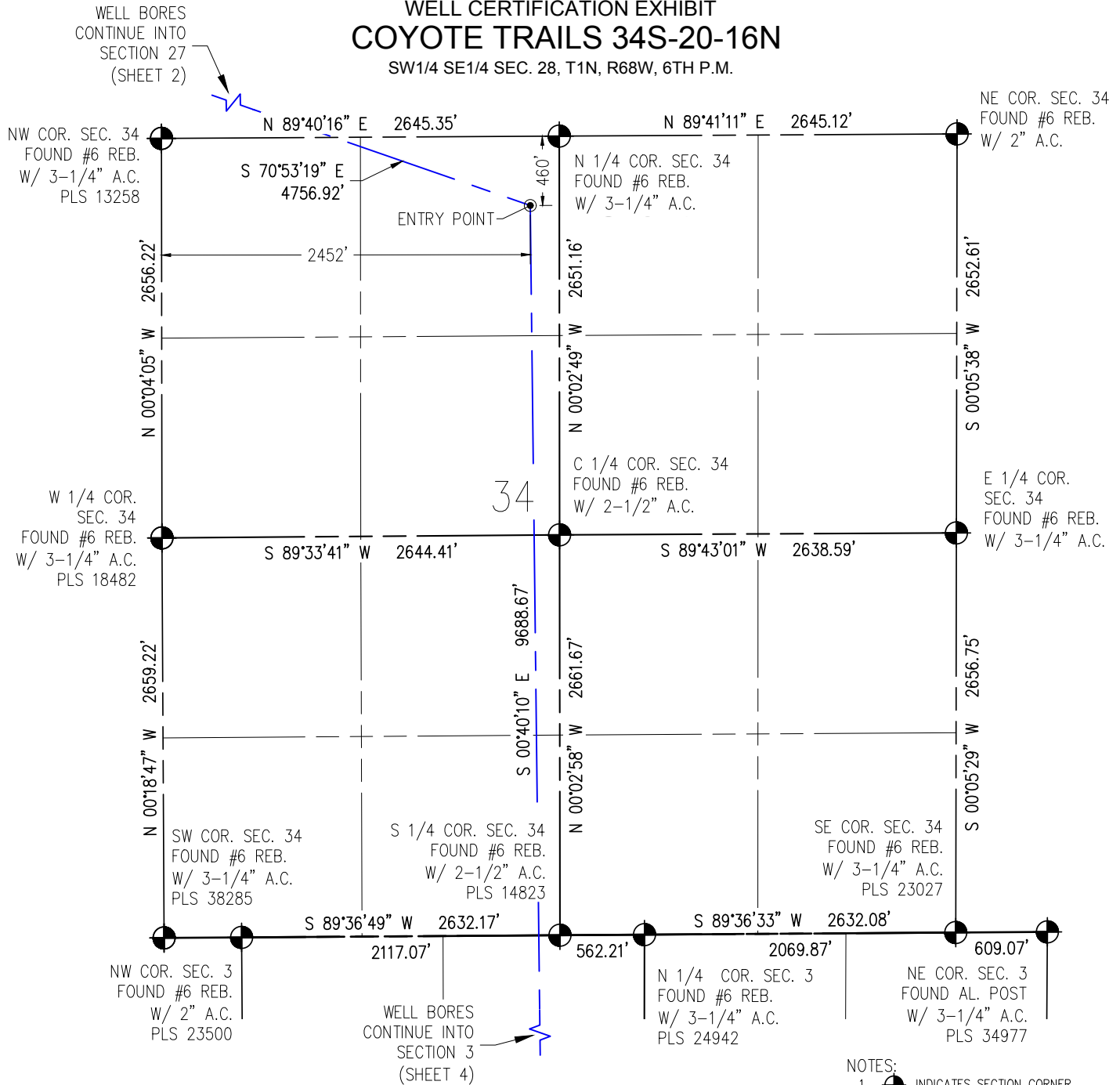
DRAWN BY	RPM
CHECKED BY	AAD
INITIAL SUBMITTAL	08/24/2017
REVISED	N/A
DRAWING SIZE	8.5" X 11"
JOB NO.	EXT01N68W28-01
SHEET	2 OF 4



4007 S. LINCOLN AVENUE, SUITE 405 - LOVELAND, COLORADO 80537
P: 970.353.7800 - F: 970.353.7801 - www.baselinecorp.com

WELL CERTIFICATION EXHIBIT COYOTE TRAILS 34S-20-16N

SW1/4 SE1/4 SEC. 28, T1N, R68W, 6TH P.M.



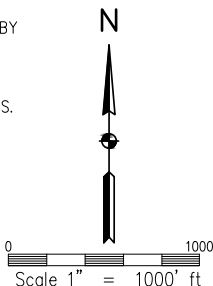
NOTES:

1. INDICATES SECTION CORNER
2. INDICATES CALCULATED CORNER
3. (C) INDICATES CALCULATED DIMENSION
4. ELEVATION BASED ON NAVD88 (GEOID12B)
5. BEARINGS DERIVED FROM COLORADO COORDINATE SYSTEM OF 1983 NORTH ZONE.
6. OPERATOR: TRAVIS WINNICKI
7. IMPROVEMENTS: SEE LOCATION DRAWING FOR ALL VISIBLE IMPROVEMENTS WITHIN 500' OF DISTURBED AREA.
8. WELL FOOTAGES ARE MEASURED AT RIGHT ANGLES TO THE SECTION LINES.

SURFACE LOCATION
SEC. 28, T1N, R68W
GROUND ELEVATION = 5274'
PDOP = 1.5
LATITUDE = 40.017973°
LONGITUDE = -105.006317°
1144' FSL, 2031' FEL
ENTRY POINT LOCATION
SEC. 34, T1N, R68W
LATITUDE = 40.013629°
LONGITUDE = -104.990306°
460' FNL, 2452' FWL
BOTTOM HOLE LOCATION
SEC. 3, T1S, R68W
LATITUDE = 39.987040°
LONGITUDE = -104.990102°
150' FSL, 1997' FWL

I HEREBY CERTIFY THAT THIS WELL LOCATION CERTIFICATE WAS PREPARED BY ME, OR UNDER MY DIRECT SUPERVISION, THAT THE FIELD WORK WAS COMPLETED ON 06/30/2017, THAT THIS IS NOT A LAND SURVEY PLAT OR AN IMPROVEMENT SURVEY PLAT, AND THAT IT IS NOT TO BE RELIED UPON FOR ESTABLISHMENT OF FENCE, BUILDING OR OTHER FUTURE IMPROVEMENT LINES.

AARON A. DEMO
Professional Land Surveyor Registration No. 38285
State of Colorado
FOR AND ON BEHALF OF BASELINE ENGINEERING CORP.



NEAREST CULTURAL ITEMS:

BUILDING: 1496' S
BUILDING UNIT: 1496' S
HIGH OCCUPANCY BUILDING UNIT: 4813' SW
DESIGNATED OUTSIDE ACTIVITY AREA: 5280' ±
PUBLIC ROAD: WELD COUNTY ROAD 4 1342' SW
ABOVE GROUND UTILITY: 1636' S
RAILROAD: 5280' ±
PROPERTY LINE: 643' W
SURFACE USE: GRASSLAND
NEAREST EXISTING WELL: MEIKLE 2 376' E



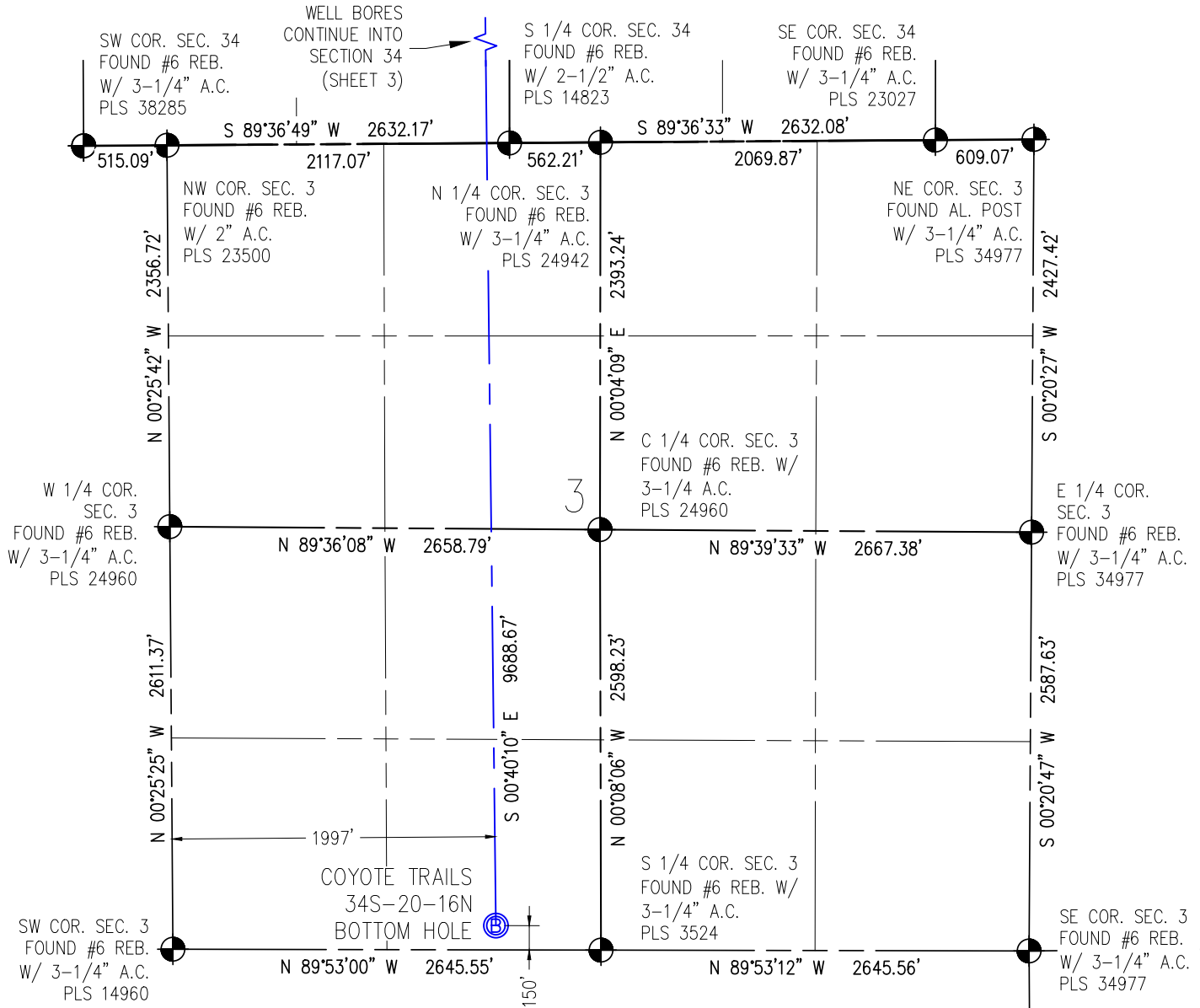
DRAWN BY	RPM	CHECKED BY	AAD
INITIAL SUBMITTAL	08/24/2017		
REVISED	N/A		
DRAWING SIZE	8.5" X 11"		
JOB NO.	EXT01N68W28-01		
SHEET	3 OF 4		

BASELINE
Engineering - Planning - Surveying

4007 S. LINCOLN AVENUE, SUITE 405 • LOVELAND, COLORADO 80537
P: 970.353.7800 • F: 970.353.7801 • www.baselinecorp.com

WELL CERTIFICATION EXHIBIT COYOTE TRAILS 34S-20-16N

SW1/4 SE1/4 SEC. 28, T1N, R68W, 6TH P.M.



I HEREBY CERTIFY THAT THIS WELL LOCATION CERTIFICATE WAS PREPARED BY ME, OR UNDER MY DIRECT SUPERVISION, THAT THE FIELD WORK WAS COMPLETED ON 06/30/2017, THAT THIS IS NOT A LAND SURVEY PLAT OR AN IMPROVEMENT SURVEY PLAT, AND THAT IT IS NOT TO BE RELIED UPON FOR ESTABLISHMENT OF FENCE, BUILDING OR OTHER FUTURE IMPROVEMENT LINES.

AARON A. DEMO
Professional Land Surveyor Registration No. 38285
State of Colorado
FOR AND ON BEHALF OF BASELINE ENGINEERING CORP.

N

0 1000'
Scale 1" = 1000' ft

SURFACE LOCATION
SEC. 28, T1N, R68W
GROUND ELEVATION = 5274'
PDOP = 1.5
LATITUDE = 40.017973°
LONGITUDE = -105.006317°
1144' FSL, 2031' FEL
ENTRY POINT LOCATION
SEC. 34, T1N, R68W
LATITUDE = 40.013629°
LONGITUDE = -104.990306°
460' FNL, 2452' FWL
BOTTOM HOLE LOCATION
SEC. 3, T1S, R68W
LATITUDE = 39.987040°
LONGITUDE = -104.990102°
150' FSL, 1997' FWL

NOTES:

1. INDICATES SECTION CORNER
2. INDICATES CALCULATED CORNER
3. (C) INDICATES CALCULATED DIMENSION
4. ELEVATION BASED ON NAVD88 (GEOID12B)
5. BEARINGS DERIVED FROM COLORADO COORDINATE SYSTEM OF 1983 NORTH ZONE.
6. OPERATOR: TRAVIS WINNICKI
7. IMPROVEMENTS: SEE LOCATION DRAWING FOR ALL VISIBLE IMPROVEMENTS WITHIN 500' OF DISTURBED AREA.
8. WELL FOOTAGES ARE MEASURED AT RIGHT ANGLES TO THE SECTION LINES.

NEAREST CULTURAL ITEMS:

BUILDING: 1496' S
BUILDING UNIT: 1496' S
HIGH OCCUPANCY BUILDING UNIT: 4813' SW
DESIGNATED OUTSIDE ACTIVITY AREA: 5280'±
PUBLIC ROAD: WELD COUNTY ROAD 4 1342' SW
ABOVE GROUND UTILITY: 1636' S
RAILROAD: 5280'±
PROPERTY LINE: 643' W
SURFACE USE: GRASSLAND
NEAREST EXISTING WELL: MEIKLE 2 376' E



DRAWN BY	RPM	CHECKED BY	AAD
INITIAL SUBMITAL	08/24/2017	REVISED	N/A
DRAWING SIZE	8.5" X 11"	JOB NO.	EXT01N68W28-01
SHEET	4 OF 4		

BASELINE
Engineering - Planning - Surveying
4007 S. LINCOLN AVENUE, SUITE 405 - LOVELAND, COLORADO 80537
P: 970.353.7800 - F: 970.353.7801 - www.baselinecorp.com