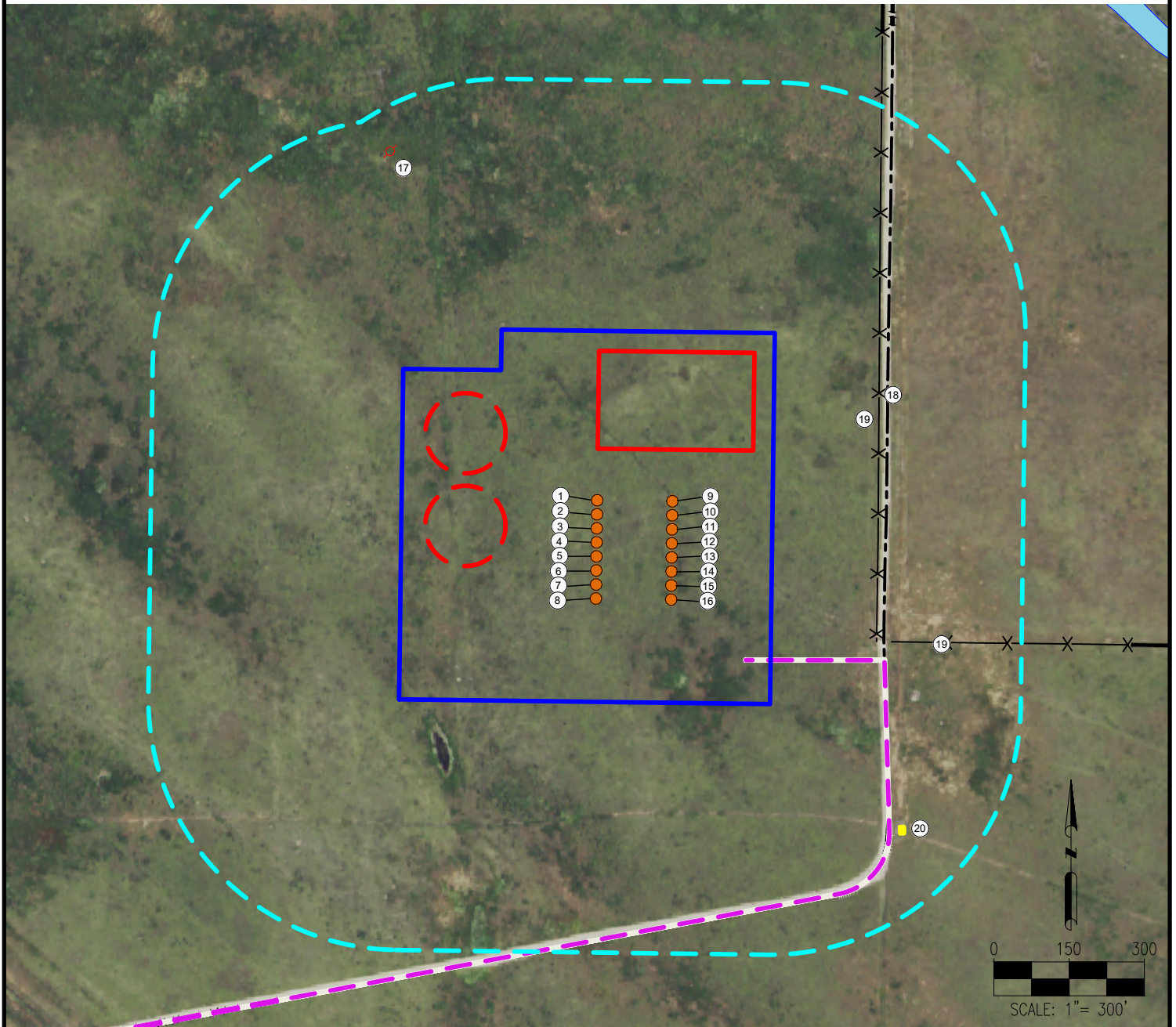


# CASTOR 8-59 19 PAD LOCATION DRAWING



- |                            |                          |  |
|----------------------------|--------------------------|--|
| 1. CASTOR FED 8-59 19-24-1 | 9. CASTOR 8-59 19-24-9   | 17. DE FORD 1 IS $\pm 897'$ NW             |
| 2. CASTOR FED 8-59 19-24-2 | 10. CASTOR 8-59 19-24-10 | 18. PRIVATE ROAD IS $\pm 427'$ E           |
| 3. CASTOR FED 8-59 19-24-3 | 11. CASTOR 8-59 19-24-11 | 19. FENCES ARE $\pm 411'$ E, $\pm 519'$ SE |
| 4. CASTOR FED 8-59 19-24-4 | 12. CASTOR 8-59 19-24-12 | 20. PIG LAUNCHER IS $\pm 793'$ SE          |
| 5. CASTOR FED 8-59 19-24-5 | 13. CASTOR 8-59 19-24-13 |  |
| 6. CASTOR FED 8-59 19-24-6 | 14. CASTOR 8-59 19-24-14 |  |
| 7. CASTOR FED 8-59 19-24-7 | 15. CASTOR 8-59 19-24-15 |  |
| 8. CASTOR FED 8-59 19-24-8 | 16. CASTOR 8-59 19-24-16 |  |

## LEGEND:

- |                            |                 |                          |
|----------------------------|-----------------|--------------------------|
| = PROPOSED WELL            | = EXISTING ROAD | = DISTURBANCE AREA       |
| = DRILLED & ABANDONED WELL | = FENCE         | = 500' RADIUS            |
|                            |                 | = POND                   |
|                            |                 | = PIG LAUNCHER           |
|                            |                 | = PROPOSED FACILITY AREA |
|                            |                 | = PROPOSED MLVT          |
|                            |                 | = PROPOSED ACCESS ROAD   |

## MEASURED FROM NEAREST WELL OR FACILITY:

BUILDING  $\pm 5280'$  SE  
 BUILDING UNIT  $\pm 5280'$  SE  
 PUBLIC ROAD (CO RD 390)  $\pm 1467'$  SW  
 PROP. LINE (Peterson Donald O & Penelope G)  $\pm 250'$  E  
 UTILITY (POWERLINE)  $\pm 4708'$  SE  
 RAILROAD  $\pm 5280'$  S

MEASURED FROM NEAREST EDGE OF DISTURBANCE:  
 SURFACE WATER (POND)  $\pm 701'$  N

## REFERENCE LOCATION

**\*\*CASTOR 8-59 19-24-9\*\***

LAT: 104.644946° N  
 LONG: 104.011983° W  
 ELEVATION: 4856'  
 1617' FSL & 410' FEL  
 PDOP: 1.7  
 GPS OPERATOR: ROSS TODD

**DISCLAIMER:**  
 THIS PLOT DOES NOT REPRESENT A MONUMENTED LAND SURVEY AND SHOULD NOT BE RELIED UPON TO DETERMINE BOUNDARY LINES, PROPERTY OWNERSHIP OR OTHER PROPERTY INTERESTS. PARCEL LINES, IF DEPICTED HAVE NOT BEEN FIELD VERIFIED AND MAY BE BASED UPON PUBLICLY AVAILABLE DATA THAT ALSO HAS NOT BEEN INDEPENDENTLY VERIFIED.

DATA SOURCE:  
 AERIAL IMAGERY: NAIP 2015  
 WATER WELLS: COLORADO DWR  
 NHD: USGS

PUBLICLY AVAILABLE DATA SOURCES HAVE NOT BEEN INDEPENDENTLY VERIFIED BY ASCENT.

## MEASURED FROM NEAREST WELL:

WATER WELL  $\pm 5416'$  SW SWL = 63'  
 PERMIT: 41866- RECEIPT: 9064249

**DISTURBANCE ACREAGE:**  
 12.20 ACRES DRILLING OPERATIONS  
 6.10 ACRES INTERIM RECLAIM

CURRENT SURFACE USE: RANGELAND  
 FUTURE SURFACE USE: RANGELAND



7535 Hilltop Circle  
 Denver, CO 80221  
 (303) 928-7128  
 www.ascentgeomatics.com

FIELD DATE:

06-28-17

DRAWING DATE:

10-24-17

BY:

AS

CHECKED:

KAD

SITE NAME:

CASTOR 8-59 19 PAD

SURFACE LOCATION:

NE 1/4 SE 1/4 SEC. 19, T8N, R59W, 6TH P.M.

WELD COUNTY, COLORADO

PREPARED FOR:

