



SRC ENERGY

Operator: SRC Energy
Well Name: State M 36-25
Legal: NWSW, Section 36, Township 6N, Range 67W
Location: Weld County, CO
API: 05-123-23212

Deepest Water Well
Within 1 Mile = 840'





Wellbore History

Spud Date: 10/9/2005
Surf Csg: 8.625", 24# @ 545' – 385 sx
Prod Csg: 4.5", 11.6# @ 7227' – 610 sx
TOC: 2860' (CBL)
Perfs: NBRR: 6768'-6918'
CODL: 7088'-7106'

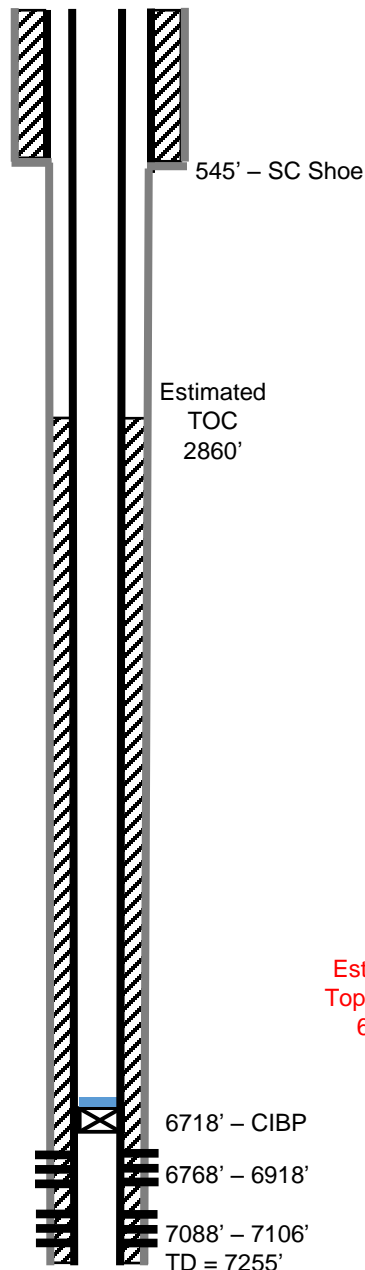
P&A Procedure

Tag existing CIBP w/ 2 sx on top (≈6692')
Set 14 sx on top of existing CIBP (142' plug)
Cut Casing @ 900'
Pmp 362 sx @ 950' to surface

Key

-  Existing Cement Coverage
-  CICR
-  Cement Pumped
-  CIBP

Current



Proposed

