



SRC ENERGY

Operator: SRC Energy
Well Name: State M 36-13
Legal: NWSW, Section 36, Township 6N, Range 67W
Location: Weld County, CO
API: 05-123-23209

Deepest Water Well
Within 1 Mile = 840'





Wellbore History

Spud Date: 10/15/2005
Surf Csg: 8.625", 24# @ 550' – 385 sx
Prod Csg: 4.5", 11.6# @ 7912' – 290 sx
S.C. 1.1: 3435'-5191' – 290 sx
TOC: 6152' & 3435' (CBL)
Perfs: GRNHN: 7446'-7512'
JSND: 7714'-7743'

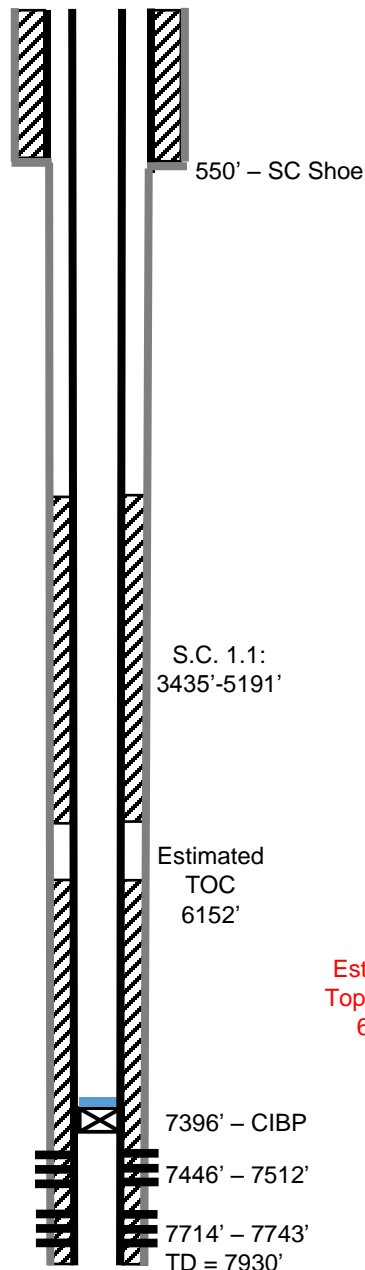
P&A Procedure

Tag existing CIBP w/ 2 sx on top (~7370')
Set 57 sx on top of existing CIBP (600' plug)
Cut Casing @ 900'
Pmp 362 sx @ 950' to surface

Key

-  Existing Cement Coverage
-  CICR
-  Cement Pumped
-  CIBP

Current



Proposed

