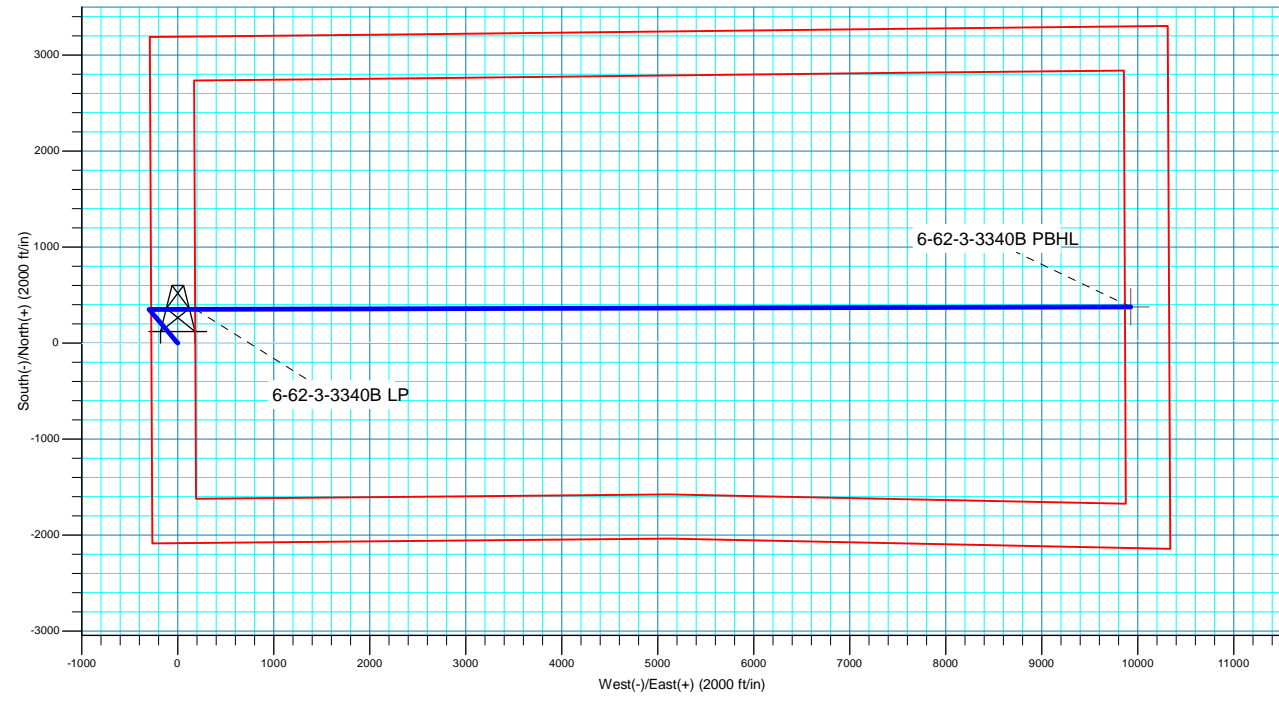
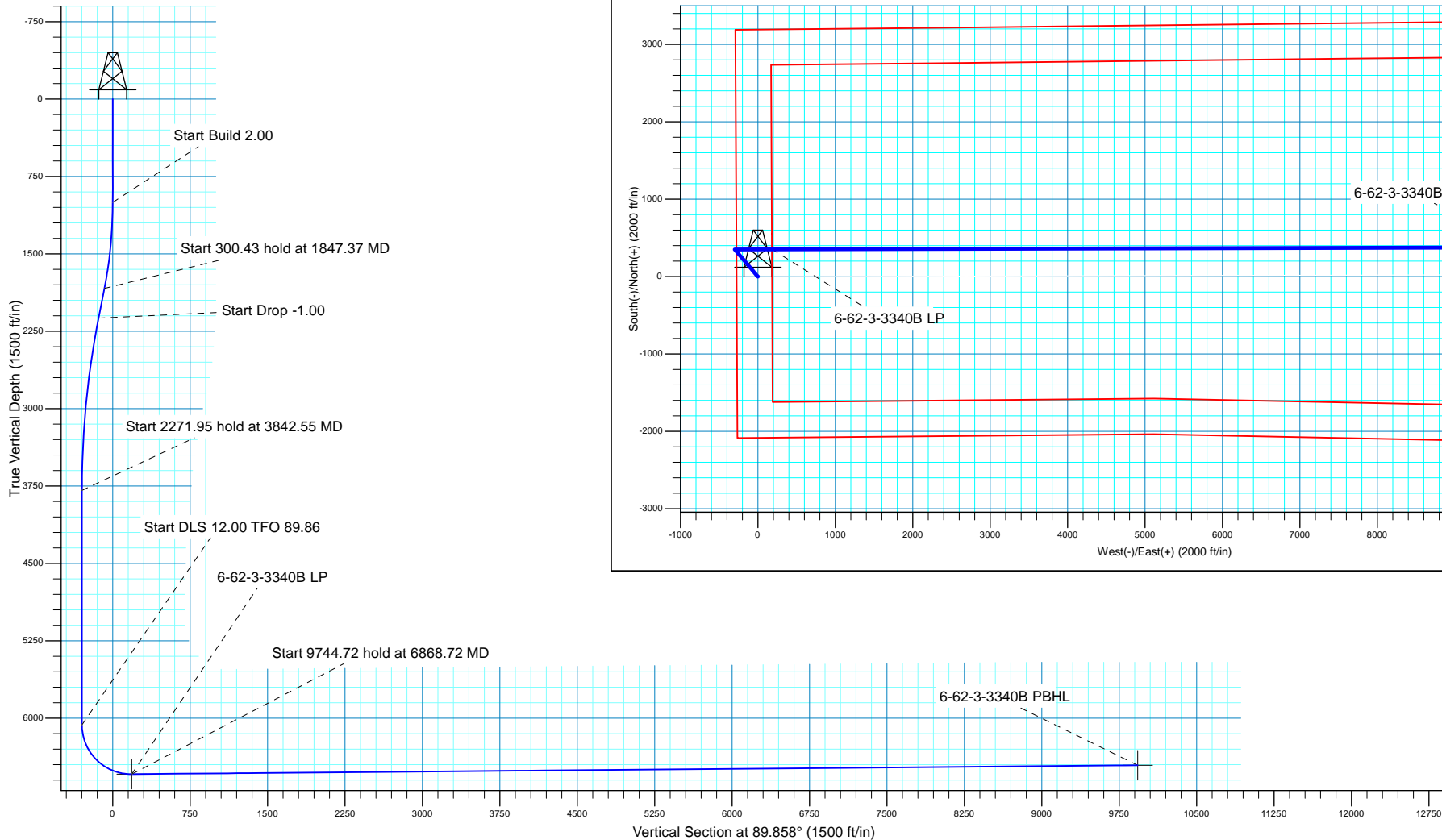



**SECTION DETAILS**

MD	Inc	Azi	TVD	+N/-S	+E/-W	Dleg	TFace	VSect
0.00	0.00	0.000	0.00	0.00	0.00	0.00	0.00	0.00
1000.00	0.00	0.000	1000.00	0.00	0.00	0.00	0.00	0.00
1847.37	16.95	319.634	1835.07	94.79	-80.58	2.00	319.63	-80.34
2147.81	16.95	319.634	2122.46	161.52	-137.30	0.00	0.00	-136.90
3842.55	0.00	0.000	3792.60	351.10	-298.45	1.00	180.00	-297.58
6114.50	0.00	0.000	6064.55	351.10	-298.45	0.00	0.00	-297.58
6868.72	90.51	89.858	6542.00	352.30	183.23	12.00	89.86	184.10
16613.44	90.51	89.858	6456.00	376.53	9927.54	0.00	0.00	9928.44

**WELL DETAILS: Will Trust 6-62-3-3340B**

+N/-S	+E/-W	GL 4820' & KB 20' @ 4840.00ft	4820.00	Longitude
Northing	Easting	Latitude		
0.00	0.00	1432520.46	3328909.13	40° 30' 52.729 N 104° 19' 1.222 W





**Bill Barrett Corporation**

## **Bill Barrett Corp.**

Weld County, CO NAD 83

Will Trust 6-62-3\_2 NWSW Pad

Will Trust 6-62-3-3340B

OH

Plan: Plan 2

## **Standard Planning Report**

20 July, 2017



**Scientific Drilling**

[www.scientificdrilling.com](http://www.scientificdrilling.com)



<b>Database:</b>	Casper District	<b>Local Co-ordinate Reference:</b>	Well Will Trust 6-62-3-3340B
<b>Company:</b>	Bill Barrett Corp.	<b>TVD Reference:</b>	GL 4820' & KB 20' @ 4840.00ft
<b>Project:</b>	Weld County, CO NAD 83	<b>MD Reference:</b>	GL 4820' & KB 20' @ 4840.00ft
<b>Site:</b>	Will Trust 6-62-3_2 NWSW Pad	<b>North Reference:</b>	True
<b>Well:</b>	Will Trust 6-62-3-3340B	<b>Survey Calculation Method:</b>	Minimum Curvature
<b>Wellbore:</b>	OH		
<b>Design:</b>	Plan 2		

<b>Project</b>	Weld County, CO NAD 83		
<b>Map System:</b>	US State Plane 1983	<b>System Datum:</b>	Mean Sea Level
<b>Geo Datum:</b>	North American Datum 1983		
<b>Map Zone:</b>	Colorado Northern Zone		

<b>Site</b>	Will Trust 6-62-3_2 NWSW Pad, Site Center : Will Trust 6-62-03-3225A2			
<b>Site Position:</b>		<b>Northing:</b>	1,432,534.69 usft	<b>Latitude:</b> 40° 30' 52.870 N
<b>From:</b>	Lat/Long	<b>Easting:</b>	3,328,908.95 usft	<b>Longitude:</b> 104° 19' 1.222 W
<b>Position Uncertainty:</b>	0.00 ft	<b>Slot Radius:</b>	13.200 in	<b>Grid Convergence:</b> 0.76 °

<b>Well</b>	Will Trust 6-62-3-3340B, 2084' FSL 275' FWL Sec 3 T6N R62W			
<b>Well Position</b>	<b>+N/-S</b>	-14.22 ft	<b>Northing:</b>	1,432,520.46 usft
	<b>+E/-W</b>	0.00 ft	<b>Easting:</b>	3,328,909.14 usft
<b>Position Uncertainty</b>		0.00 ft	<b>Wellhead Elevation:</b>	0.00 ft
			<b>Ground Level:</b>	4,820.00 ft

<b>Wellbore</b>	OH				
<b>Magnetics</b>	<b>Model Name</b>	<b>Sample Date</b>	<b>Declination (°)</b>	<b>Dip Angle (°)</b>	<b>Field Strength (nT)</b>
	BGGM2016	3/14/2017	8.15	67.05	52,555
	HDGM	7/20/2017	8.10	67.02	52,303

<b>Design</b>	Plan 2			
<b>Audit Notes:</b>				
<b>Version:</b>	<b>Phase:</b>	PLAN	<b>Tie On Depth:</b>	0.00
<b>Vertical Section:</b>	<b>Depth From (TVD) (ft)</b>	<b>+N/-S (ft)</b>	<b>+E/-W (ft)</b>	<b>Direction (°)</b>
	0.00	0.00	0.00	89.858

<b>Plan Sections</b>										
Measured Depth (ft)	Inclination (°)	Azimuth (°)	Vertical Depth (ft)	+N/-S (ft)	+E/-W (ft)	Dogleg Rate (°/100ft)	Build Rate (°/100ft)	Turn Rate (°/100ft)	TFO (°)	Target
0.00	0.00	0.000	0.00	0.00	0.00	0.00	0.00	0.00	0.00	
1,000.00	0.00	0.000	1,000.00	0.00	0.00	0.00	0.00	0.00	0.00	
1,847.37	16.95	319.634	1,835.07	94.79	-80.58	2.00	2.00	0.00	319.63	
2,147.81	16.95	319.634	2,122.46	161.52	-137.30	0.00	0.00	0.00	0.00	
3,842.55	0.00	0.000	3,792.60	351.10	-298.45	1.00	-1.00	0.00	180.00	
6,114.50	0.00	0.000	6,064.55	351.10	-298.45	0.00	0.00	0.00	0.00	
6,868.72	90.51	89.858	6,542.00	352.30	183.23	12.00	12.00	11.91	89.86	
16,613.44	90.51	89.858	6,456.00	376.52	9,927.54	0.00	0.00	0.00	0.00	6-62-3-3340B PBHL

<b>Database:</b>	Casper District	<b>Local Co-ordinate Reference:</b>	Well Will Trust 6-62-3-3340B
<b>Company:</b>	Bill Barrett Corp.	<b>TVD Reference:</b>	GL 4820' & KB 20' @ 4840.00ft
<b>Project:</b>	Weld County, CO NAD 83	<b>MD Reference:</b>	GL 4820' & KB 20' @ 4840.00ft
<b>Site:</b>	Will Trust 6-62-3_2 NWSW Pad	<b>North Reference:</b>	True
<b>Well:</b>	Will Trust 6-62-3-3340B	<b>Survey Calculation Method:</b>	Minimum Curvature
<b>Wellbore:</b>	OH		
<b>Design:</b>	Plan 2		

Planned Survey									
Measured Depth (ft)	Inclination (°)	Azimuth (°)	Vertical Depth (ft)	+N/-S (ft)	+E/-W (ft)	Vertical Section (ft)	Dogleg Rate (°/100ft)	Build Rate (°/100ft)	Turn Rate (°/100ft)
0.00	0.00	0.000	0.00	0.00	0.00	0.00	0.00	0.00	0.00
100.00	0.00	0.000	100.00	0.00	0.00	0.00	0.00	0.00	0.00
200.00	0.00	0.000	200.00	0.00	0.00	0.00	0.00	0.00	0.00
300.00	0.00	0.000	300.00	0.00	0.00	0.00	0.00	0.00	0.00
400.00	0.00	0.000	400.00	0.00	0.00	0.00	0.00	0.00	0.00
500.00	0.00	0.000	500.00	0.00	0.00	0.00	0.00	0.00	0.00
600.00	0.00	0.000	600.00	0.00	0.00	0.00	0.00	0.00	0.00
700.00	0.00	0.000	700.00	0.00	0.00	0.00	0.00	0.00	0.00
800.00	0.00	0.000	800.00	0.00	0.00	0.00	0.00	0.00	0.00
900.00	0.00	0.000	900.00	0.00	0.00	0.00	0.00	0.00	0.00
1,000.00	0.00	0.000	1,000.00	0.00	0.00	0.00	0.00	0.00	0.00
<b>Start Build 2.00</b>									
1,100.00	2.00	319.634	1,099.98	1.33	-1.13	-1.13	2.00	2.00	0.00
1,200.00	4.00	319.634	1,199.84	5.32	-4.52	-4.51	2.00	2.00	0.00
1,300.00	6.00	319.634	1,299.45	11.96	-10.16	-10.13	2.00	2.00	0.00
1,400.00	8.00	319.634	1,398.70	21.24	-18.06	-18.00	2.00	2.00	0.00
1,500.00	10.00	319.634	1,497.47	33.16	-28.19	-28.11	2.00	2.00	0.00
1,600.00	12.00	319.634	1,595.62	47.70	-40.55	-40.43	2.00	2.00	0.00
1,700.00	14.00	319.634	1,693.06	64.84	-55.11	-54.95	2.00	2.00	0.00
1,800.00	16.00	319.634	1,789.64	84.56	-71.88	-71.67	2.00	2.00	0.00
1,847.37	16.95	319.634	1,835.07	94.79	-80.58	-80.34	2.00	2.00	0.00
<b>Start 300.43 hold at 1847.37 MD</b>									
1,900.00	16.95	319.634	1,885.41	106.48	-90.51	-90.25	0.00	0.00	0.00
2,000.00	16.95	319.634	1,981.07	128.69	-109.39	-109.07	0.00	0.00	0.00
2,100.00	16.95	319.634	2,076.73	150.90	-128.27	-127.90	0.00	0.00	0.00
2,147.81	16.95	319.634	2,122.46	161.52	-137.30	-136.90	0.00	0.00	0.00
<b>Start Drop -1.00</b>									
2,200.00	16.43	319.634	2,172.45	172.94	-147.00	-146.57	1.00	-1.00	0.00
2,300.00	15.43	319.634	2,268.61	193.84	-164.77	-164.29	1.00	-1.00	0.00
2,400.00	14.43	319.634	2,365.24	213.47	-181.45	-180.93	1.00	-1.00	0.00
2,500.00	13.43	319.634	2,462.30	231.80	-197.04	-196.47	1.00	-1.00	0.00
2,600.00	12.43	319.634	2,559.76	248.84	-211.53	-210.91	1.00	-1.00	0.00
2,700.00	11.43	319.634	2,657.60	264.59	-224.91	-224.26	1.00	-1.00	0.00
2,800.00	10.43	319.634	2,755.79	279.03	-237.19	-236.49	1.00	-1.00	0.00
2,900.00	9.43	319.634	2,854.29	292.16	-248.35	-247.63	1.00	-1.00	0.00
3,000.00	8.43	319.634	2,953.08	303.98	-258.40	-257.64	1.00	-1.00	0.00
3,100.00	7.43	319.634	3,052.12	314.49	-267.33	-266.55	1.00	-1.00	0.00
3,200.00	6.43	319.634	3,151.39	323.68	-275.14	-274.34	1.00	-1.00	0.00
3,300.00	5.43	319.634	3,250.86	331.54	-281.83	-281.00	1.00	-1.00	0.00
3,400.00	4.43	319.634	3,350.49	338.08	-287.39	-286.55	1.00	-1.00	0.00
3,500.00	3.43	319.634	3,450.25	343.30	-291.82	-290.97	1.00	-1.00	0.00
3,600.00	2.43	319.634	3,550.12	347.19	-295.13	-294.26	1.00	-1.00	0.00
3,700.00	1.43	319.634	3,650.06	349.75	-297.30	-296.43	1.00	-1.00	0.00
3,800.00	0.43	319.634	3,750.05	350.98	-298.35	-297.48	1.00	-1.00	0.00
3,842.55	0.00	0.000	3,792.60	351.10	-298.45	-297.58	1.00	-1.00	0.00
<b>Start 2271.95 hold at 3842.55 MD</b>									
3,900.00	0.00	0.000	3,850.05	351.10	-298.45	-297.58	0.00	0.00	0.00
4,000.00	0.00	0.000	3,950.05	351.10	-298.45	-297.58	0.00	0.00	0.00
4,100.00	0.00	0.000	4,050.05	351.10	-298.45	-297.58	0.00	0.00	0.00
4,200.00	0.00	0.000	4,150.05	351.10	-298.45	-297.58	0.00	0.00	0.00
4,300.00	0.00	0.000	4,250.05	351.10	-298.45	-297.58	0.00	0.00	0.00
4,400.00	0.00	0.000	4,350.05	351.10	-298.45	-297.58	0.00	0.00	0.00
4,500.00	0.00	0.000	4,450.05	351.10	-298.45	-297.58	0.00	0.00	0.00
4,600.00	0.00	0.000	4,550.05	351.10	-298.45	-297.58	0.00	0.00	0.00

<b>Database:</b>	Casper District	<b>Local Co-ordinate Reference:</b>	Well Will Trust 6-62-3-3340B
<b>Company:</b>	Bill Barrett Corp.	<b>TVD Reference:</b>	GL 4820' & KB 20' @ 4840.00ft
<b>Project:</b>	Weld County, CO NAD 83	<b>MD Reference:</b>	GL 4820' & KB 20' @ 4840.00ft
<b>Site:</b>	Will Trust 6-62-3_2 NWSW Pad	<b>North Reference:</b>	True
<b>Well:</b>	Will Trust 6-62-3-3340B	<b>Survey Calculation Method:</b>	Minimum Curvature
<b>Wellbore:</b>	OH		
<b>Design:</b>	Plan 2		

Planned Survey									
Measured Depth (ft)	Inclination (°)	Azimuth (°)	Vertical Depth (ft)	+N/-S (ft)	+E/-W (ft)	Vertical Section (ft)	Dogleg Rate (°/100ft)	Build Rate (°/100ft)	Turn Rate (°/100ft)
4,700.00	0.00	0.000	4,650.05	351.10	-298.45	-297.58	0.00	0.00	0.00
4,800.00	0.00	0.000	4,750.05	351.10	-298.45	-297.58	0.00	0.00	0.00
4,900.00	0.00	0.000	4,850.05	351.10	-298.45	-297.58	0.00	0.00	0.00
5,000.00	0.00	0.000	4,950.05	351.10	-298.45	-297.58	0.00	0.00	0.00
5,100.00	0.00	0.000	5,050.05	351.10	-298.45	-297.58	0.00	0.00	0.00
5,200.00	0.00	0.000	5,150.05	351.10	-298.45	-297.58	0.00	0.00	0.00
5,300.00	0.00	0.000	5,250.05	351.10	-298.45	-297.58	0.00	0.00	0.00
5,400.00	0.00	0.000	5,350.05	351.10	-298.45	-297.58	0.00	0.00	0.00
5,500.00	0.00	0.000	5,450.05	351.10	-298.45	-297.58	0.00	0.00	0.00
5,600.00	0.00	0.000	5,550.05	351.10	-298.45	-297.58	0.00	0.00	0.00
5,700.00	0.00	0.000	5,650.05	351.10	-298.45	-297.58	0.00	0.00	0.00
5,800.00	0.00	0.000	5,750.05	351.10	-298.45	-297.58	0.00	0.00	0.00
5,900.00	0.00	0.000	5,850.05	351.10	-298.45	-297.58	0.00	0.00	0.00
6,000.00	0.00	0.000	5,950.05	351.10	-298.45	-297.58	0.00	0.00	0.00
6,100.00	0.00	0.000	6,050.05	351.10	-298.45	-297.58	0.00	0.00	0.00
6,114.50	0.00	0.000	6,064.55	351.10	-298.45	-297.58	0.00	0.00	0.00
<b>Start DLS 12.00 TFO 89.86</b>									
6,200.00	10.26	89.858	6,149.59	351.12	-290.82	-289.94	12.00	12.00	0.00
6,300.00	22.26	89.858	6,245.41	351.19	-262.87	-262.00	12.00	12.00	0.00
6,400.00	34.26	89.858	6,333.34	351.31	-215.61	-214.74	12.00	12.00	0.00
6,500.00	46.26	89.858	6,409.51	351.47	-151.10	-150.23	12.00	12.00	0.00
6,600.00	58.26	89.858	6,470.61	351.66	-72.17	-71.30	12.00	12.00	0.00
6,700.00	70.26	89.858	6,513.96	351.89	17.74	18.62	12.00	12.00	0.00
6,800.00	82.26	89.858	6,537.66	352.13	114.71	115.58	12.00	12.00	0.00
6,868.72	90.51	89.858	6,542.00	352.30	183.23	184.10	12.00	12.00	0.00
<b>Start 9744.72 hold at 6868.72 MD</b>									
6,900.00	90.51	89.858	6,541.72	352.38	214.51	215.38	0.00	0.00	0.00
7,000.00	90.51	89.858	6,540.84	352.62	314.50	315.38	0.00	0.00	0.00
7,100.00	90.51	89.858	6,539.96	352.87	414.50	415.37	0.00	0.00	0.00
7,200.00	90.51	89.858	6,539.07	353.12	514.50	515.37	0.00	0.00	0.00
7,300.00	90.51	89.858	6,538.19	353.37	614.49	615.36	0.00	0.00	0.00
7,400.00	90.51	89.858	6,537.31	353.62	714.49	715.36	0.00	0.00	0.00
7,500.00	90.51	89.858	6,536.43	353.87	814.48	815.36	0.00	0.00	0.00
7,600.00	90.51	89.858	6,535.54	354.12	914.48	915.35	0.00	0.00	0.00
7,700.00	90.51	89.858	6,534.66	354.36	1,014.47	1,015.35	0.00	0.00	0.00
7,800.00	90.51	89.858	6,533.78	354.61	1,114.47	1,115.35	0.00	0.00	0.00
7,900.00	90.51	89.858	6,532.90	354.86	1,214.47	1,215.34	0.00	0.00	0.00
8,000.00	90.51	89.858	6,532.01	355.11	1,314.46	1,315.34	0.00	0.00	0.00
8,100.00	90.51	89.858	6,531.13	355.36	1,414.46	1,415.33	0.00	0.00	0.00
8,200.00	90.51	89.858	6,530.25	355.61	1,514.45	1,515.33	0.00	0.00	0.00
8,300.00	90.51	89.858	6,529.37	355.86	1,614.45	1,615.33	0.00	0.00	0.00
8,400.00	90.51	89.858	6,528.48	356.10	1,714.44	1,715.32	0.00	0.00	0.00
8,500.00	90.51	89.858	6,527.60	356.35	1,814.44	1,815.32	0.00	0.00	0.00
8,600.00	90.51	89.858	6,526.72	356.60	1,914.44	1,915.31	0.00	0.00	0.00
8,700.00	90.51	89.858	6,525.84	356.85	2,014.43	2,015.31	0.00	0.00	0.00
8,800.00	90.51	89.858	6,524.95	357.10	2,114.43	2,115.31	0.00	0.00	0.00
8,900.00	90.51	89.858	6,524.07	357.35	2,214.42	2,215.30	0.00	0.00	0.00
9,000.00	90.51	89.858	6,523.19	357.60	2,314.42	2,315.30	0.00	0.00	0.00
9,100.00	90.51	89.858	6,522.31	357.84	2,414.42	2,415.29	0.00	0.00	0.00
9,200.00	90.51	89.858	6,521.42	358.09	2,514.41	2,515.29	0.00	0.00	0.00
9,300.00	90.51	89.858	6,520.54	358.34	2,614.41	2,615.29	0.00	0.00	0.00
9,400.00	90.51	89.858	6,519.66	358.59	2,714.40	2,715.28	0.00	0.00	0.00
9,500.00	90.51	89.858	6,518.78	358.84	2,814.40	2,815.28	0.00	0.00	0.00

<b>Database:</b>	Casper District	<b>Local Co-ordinate Reference:</b>	Well Will Trust 6-62-3-3340B
<b>Company:</b>	Bill Barrett Corp.	<b>TVD Reference:</b>	GL 4820' & KB 20' @ 4840.00ft
<b>Project:</b>	Weld County, CO NAD 83	<b>MD Reference:</b>	GL 4820' & KB 20' @ 4840.00ft
<b>Site:</b>	Will Trust 6-62-3_2 NWSW Pad	<b>North Reference:</b>	True
<b>Well:</b>	Will Trust 6-62-3-3340B	<b>Survey Calculation Method:</b>	Minimum Curvature
<b>Wellbore:</b>	OH		
<b>Design:</b>	Plan 2		

Planned Survey									
Measured Depth (ft)	Inclination (°)	Azimuth (°)	Vertical Depth (ft)	+N/-S (ft)	+E/-W (ft)	Vertical Section (ft)	Dogleg Rate (°/100ft)	Build Rate (°/100ft)	Turn Rate (°/100ft)
9,600.00	90.51	89.858	6,517.89	359.09	2,914.39	2,915.28	0.00	0.00	0.00
9,700.00	90.51	89.858	6,517.01	359.34	3,014.39	3,015.27	0.00	0.00	0.00
9,800.00	90.51	89.858	6,516.13	359.58	3,114.39	3,115.27	0.00	0.00	0.00
9,900.00	90.51	89.858	6,515.25	359.83	3,214.38	3,215.26	0.00	0.00	0.00
10,000.00	90.51	89.858	6,514.36	360.08	3,314.38	3,315.26	0.00	0.00	0.00
10,100.00	90.51	89.858	6,513.48	360.33	3,414.37	3,415.26	0.00	0.00	0.00
10,200.00	90.51	89.858	6,512.60	360.58	3,514.37	3,515.25	0.00	0.00	0.00
10,300.00	90.51	89.858	6,511.72	360.83	3,614.36	3,615.25	0.00	0.00	0.00
10,400.00	90.51	89.858	6,510.83	361.08	3,714.36	3,715.24	0.00	0.00	0.00
10,500.00	90.51	89.858	6,509.95	361.32	3,814.36	3,815.24	0.00	0.00	0.00
10,600.00	90.51	89.858	6,509.07	361.57	3,914.35	3,915.24	0.00	0.00	0.00
10,700.00	90.51	89.858	6,508.19	361.82	4,014.35	4,015.23	0.00	0.00	0.00
10,800.00	90.51	89.858	6,507.30	362.07	4,114.34	4,115.23	0.00	0.00	0.00
10,900.00	90.51	89.858	6,506.42	362.32	4,214.34	4,215.22	0.00	0.00	0.00
11,000.00	90.51	89.858	6,505.54	362.57	4,314.34	4,315.22	0.00	0.00	0.00
11,100.00	90.51	89.858	6,504.66	362.82	4,414.33	4,415.22	0.00	0.00	0.00
11,200.00	90.51	89.858	6,503.77	363.07	4,514.33	4,515.21	0.00	0.00	0.00
11,300.00	90.51	89.858	6,502.89	363.31	4,614.32	4,615.21	0.00	0.00	0.00
11,400.00	90.51	89.858	6,502.01	363.56	4,714.32	4,715.21	0.00	0.00	0.00
11,500.00	90.51	89.858	6,501.13	363.81	4,814.31	4,815.20	0.00	0.00	0.00
11,600.00	90.51	89.858	6,500.24	364.06	4,914.31	4,915.20	0.00	0.00	0.00
11,700.00	90.51	89.858	6,499.36	364.31	5,014.31	5,015.19	0.00	0.00	0.00
11,800.00	90.51	89.858	6,498.48	364.56	5,114.30	5,115.19	0.00	0.00	0.00
11,900.00	90.51	89.858	6,497.60	364.81	5,214.30	5,215.19	0.00	0.00	0.00
12,000.00	90.51	89.858	6,496.71	365.05	5,314.29	5,315.18	0.00	0.00	0.00
12,100.00	90.51	89.858	6,495.83	365.30	5,414.29	5,415.18	0.00	0.00	0.00
12,200.00	90.51	89.858	6,494.95	365.55	5,514.29	5,515.17	0.00	0.00	0.00
12,300.00	90.51	89.858	6,494.07	365.80	5,614.28	5,615.17	0.00	0.00	0.00
12,400.00	90.51	89.858	6,493.18	366.05	5,714.28	5,715.17	0.00	0.00	0.00
12,500.00	90.51	89.858	6,492.30	366.30	5,814.27	5,815.16	0.00	0.00	0.00
12,600.00	90.51	89.858	6,491.42	366.55	5,914.27	5,915.16	0.00	0.00	0.00
12,700.00	90.51	89.858	6,490.54	366.79	6,014.26	6,015.15	0.00	0.00	0.00
12,800.00	90.51	89.858	6,489.65	367.04	6,114.26	6,115.15	0.00	0.00	0.00
12,900.00	90.51	89.858	6,488.77	367.29	6,214.26	6,215.15	0.00	0.00	0.00
13,000.00	90.51	89.858	6,487.89	367.54	6,314.25	6,315.14	0.00	0.00	0.00
13,100.00	90.51	89.858	6,487.01	367.79	6,414.25	6,415.14	0.00	0.00	0.00
13,200.00	90.51	89.858	6,486.12	368.04	6,514.24	6,515.14	0.00	0.00	0.00
13,300.00	90.51	89.858	6,485.24	368.29	6,614.24	6,615.13	0.00	0.00	0.00
13,400.00	90.51	89.858	6,484.36	368.53	6,714.23	6,715.13	0.00	0.00	0.00
13,500.00	90.51	89.858	6,483.48	368.78	6,814.23	6,815.12	0.00	0.00	0.00
13,600.00	90.51	89.858	6,482.59	369.03	6,914.23	6,915.12	0.00	0.00	0.00
13,700.00	90.51	89.858	6,481.71	369.28	7,014.22	7,015.12	0.00	0.00	0.00
13,800.00	90.51	89.858	6,480.83	369.53	7,114.22	7,115.11	0.00	0.00	0.00
13,900.00	90.51	89.858	6,479.95	369.78	7,214.21	7,215.11	0.00	0.00	0.00
14,000.00	90.51	89.858	6,479.06	370.03	7,314.21	7,315.10	0.00	0.00	0.00
14,100.00	90.51	89.858	6,478.18	370.27	7,414.21	7,415.10	0.00	0.00	0.00
14,200.00	90.51	89.858	6,477.30	370.52	7,514.20	7,515.10	0.00	0.00	0.00
14,300.00	90.51	89.858	6,476.42	370.77	7,614.20	7,615.09	0.00	0.00	0.00
14,400.00	90.51	89.858	6,475.53	371.02	7,714.19	7,715.09	0.00	0.00	0.00
14,500.00	90.51	89.858	6,474.65	371.27	7,814.19	7,815.08	0.00	0.00	0.00
14,600.00	90.51	89.858	6,473.77	371.52	7,914.18	7,915.08	0.00	0.00	0.00
14,700.00	90.51	89.858	6,472.89	371.77	8,014.18	8,015.08	0.00	0.00	0.00
14,800.00	90.51	89.858	6,472.00	372.01	8,114.18	8,115.07	0.00	0.00	0.00
14,900.00	90.51	89.858	6,471.12	372.26	8,214.17	8,215.07	0.00	0.00	0.00

<b>Database:</b>	Casper District	<b>Local Co-ordinate Reference:</b>	Well Will Trust 6-62-3-3340B
<b>Company:</b>	Bill Barrett Corp.	<b>TVD Reference:</b>	GL 4820' & KB 20' @ 4840.00ft
<b>Project:</b>	Weld County, CO NAD 83	<b>MD Reference:</b>	GL 4820' & KB 20' @ 4840.00ft
<b>Site:</b>	Will Trust 6-62-3_2 NWSW Pad	<b>North Reference:</b>	True
<b>Well:</b>	Will Trust 6-62-3-3340B	<b>Survey Calculation Method:</b>	Minimum Curvature
<b>Wellbore:</b>	OH		
<b>Design:</b>	Plan 2		

Planned Survey										
Measured Depth (ft)	Inclination (°)	Azimuth (°)	Vertical Depth (ft)	+N/-S (ft)	+E/-W (ft)	Vertical Section (ft)	Dogleg Rate (°/100ft)	Build Rate (°/100ft)	Turn Rate (°/100ft)	
15,000.00	90.51	89.858	6,470.24	372.51	8,314.17	8,315.07	0.00	0.00	0.00	
15,100.00	90.51	89.858	6,469.36	372.76	8,414.16	8,415.06	0.00	0.00	0.00	
15,200.00	90.51	89.858	6,468.47	373.01	8,514.16	8,515.06	0.00	0.00	0.00	
15,300.00	90.51	89.858	6,467.59	373.26	8,614.15	8,615.05	0.00	0.00	0.00	
15,400.00	90.51	89.858	6,466.71	373.51	8,714.15	8,715.05	0.00	0.00	0.00	
15,500.00	90.51	89.858	6,465.83	373.76	8,814.15	8,815.05	0.00	0.00	0.00	
15,600.00	90.51	89.858	6,464.94	374.00	8,914.14	8,915.04	0.00	0.00	0.00	
15,700.00	90.51	89.858	6,464.06	374.25	9,014.14	9,015.04	0.00	0.00	0.00	
15,800.00	90.51	89.858	6,463.18	374.50	9,114.13	9,115.03	0.00	0.00	0.00	
15,900.00	90.51	89.858	6,462.30	374.75	9,214.13	9,215.03	0.00	0.00	0.00	
16,000.00	90.51	89.858	6,461.41	375.00	9,314.13	9,315.03	0.00	0.00	0.00	
16,100.00	90.51	89.858	6,460.53	375.25	9,414.12	9,415.02	0.00	0.00	0.00	
16,200.00	90.51	89.858	6,459.65	375.50	9,514.12	9,515.02	0.00	0.00	0.00	
16,300.00	90.51	89.858	6,458.77	375.74	9,614.11	9,615.01	0.00	0.00	0.00	
16,400.00	90.51	89.858	6,457.88	375.99	9,714.11	9,715.01	0.00	0.00	0.00	
16,500.00	90.51	89.858	6,457.00	376.24	9,814.10	9,815.01	0.00	0.00	0.00	
16,600.00	90.51	89.858	6,456.12	376.49	9,914.10	9,915.00	0.00	0.00	0.00	
16,613.44	90.51	89.858	6,456.00	376.52	9,927.54	9,928.44	0.00	0.00	0.00	
TD at 16613.44										

Design Targets										
Target Name	Dip Angle (°)	Dip Dir. (°)	TVD (ft)	+N/-S (ft)	+E/-W (ft)	Northing (usft)	Easting (usft)	Latitude	Longitude	
6-62-3-3340B PBHL	0.00	0.000	6,456.00	376.52	9,927.54	1,433,029.39	3,338,830.75	40° 30' 56.430 N	104° 16' 52.680 W	
- hit/miss target										
- plan hits target center										
- Point										
6-62-3-3340B LP	0.00	0.000	6,542.00	352.30	183.23	1,432,875.18	3,329,087.64	40° 30' 56.210 N	104° 18' 58.849 W	
- plan misses target center by 0.01ft at 6868.72ft MD (6542.00 TVD, 352.30 N, 183.23 E)										
- Point										

Plan Annotations					
Measured Depth (ft)	Vertical Depth (ft)	Local Coordinates			
		+N/-S (ft)	+E/-W (ft)	Comment	
1,000.00	1,000.00	0.00	0.00	Start Build 2.00	
1,847.37	1,835.07	94.79	-80.58	Start 300.43 hold at 1847.37 MD	
2,147.81	2,122.46	161.52	-137.30	Start Drop -1.00	
3,842.55	3,792.60	351.10	-298.45	Start 2271.95 hold at 3842.55 MD	
6,114.50	6,064.55	351.10	-298.45	Start DLS 12.00 TFO 89.86	
6,868.72	6,542.00	352.30	183.23	Start 9744.72 hold at 6868.72 MD	
16,613.44	6,456.00	376.52	9,927.54	TD at 16613.44	