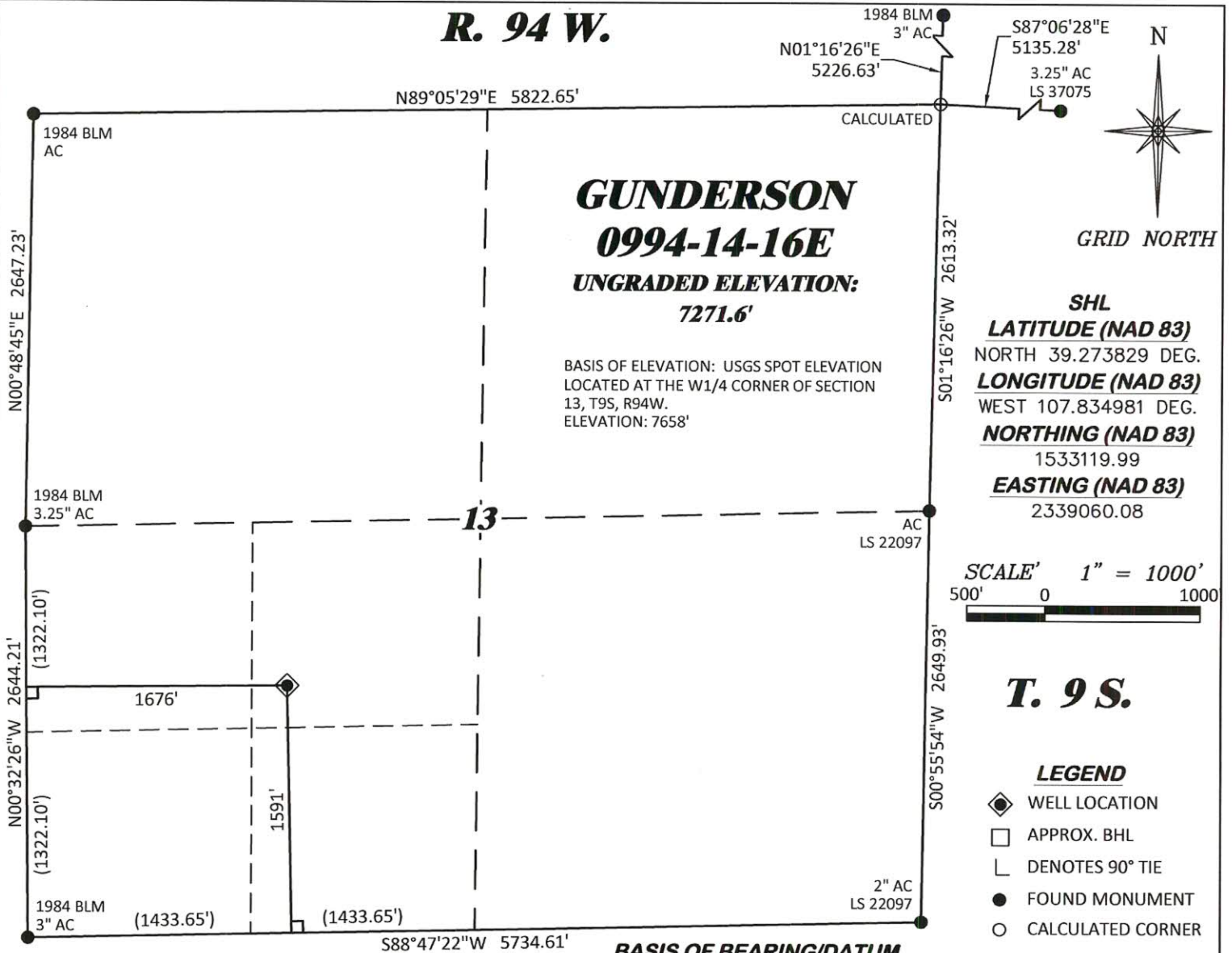


**R. 94 W.**



**GUNDERSON**  
**0994-14-16E**  
**UNGRADED ELEVATION:**  
**7271.6'**

BASIS OF ELEVATION: USGS SPOT ELEVATION  
LOCATED AT THE W1/4 CORNER OF SECTION  
13, T9S, R94W.  
ELEVATION: 7658'

**SHL**  
**LATITUDE (NAD 83)**  
NORTH 39.273829 DEG.  
**LONGITUDE (NAD 83)**  
WEST 107.834981 DEG.  
**NORTHING (NAD 83)**  
1533119.99  
**EASTING (NAD 83)**  
2339060.08

**SCALE'** 1" = 1000'  
500' 0 1000'

**T. 9 S.**

**LEGEND**

- ◆ WELL LOCATION
- APPROX. BHL
- └ DENOTES 90° TIE
- FOUND MONUMENT
- CALCULATED CORNER

**NOTES**

1. GPS OPERATOR T. SHERRILL OBSERVED A PDOP OF 1.2.
2. ALL GPS OBSERVATIONS ARE IN COMPLIANCE WITH COGCC RULE No.215.
3. EXISTING IMPROVEMENTS WITHIN 500' OF LOCATION. SEE LOC. DRAWING.
4. SURROUNDING SURFACE USE IS NATIVE BRUSH, NON CROP RANGELAND.

**SURVEYOR'S STATEMENT**

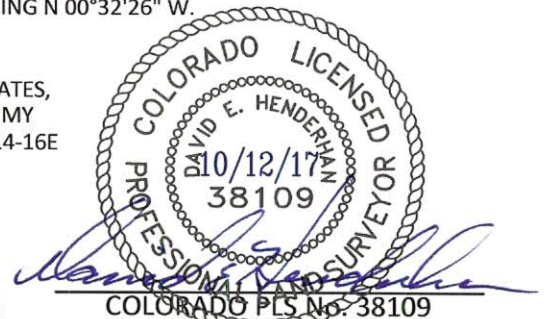
I, DAVID E. HENDERHAN, AN EMPLOYEE AND AGENT ON BEHALF OF D.R. GRIFFIN & ASSOCIATES, INC. STATE THE PLAT HEREON IS A CORRECT REPRESENTATION OF A SURVEY MADE UNDER MY SUPERVISION ON THE 29th DAY OF SEPTEMBER, 2017 OF THE SHOWN GUNDERSON 0994-14-16E AND THAT THE LOCATION HAS BEEN STAKED ON THE GROUND AS SHOWN ON THIS PLAT.

Notice: In accordance with Colorado State Law, any legal action based upon any defect in this survey plat must commence within three (3) years after first discovery of such defect. In no event, may any action based upon any defect in this survey plat be commenced more than ten (10) years from the date of certification shown hereon.

**BASIS OF BEARING/DATUM**

SPCS COLORADO CENTRAL ZONE NAD 27 BASED ON GPS OBSERVATIONS AND OPUS SOLUTION ON DRG CONTROL POINT "23-9-94" HAVING A POSITION OF:  
NAD83(2011)  
LAT 39° 15' 45.58" NORTH  
LONG 107° 51' 00.68" WEST  
NAVD88 ELEVATION: 7182.10

THE WEST LINE OF THE SW¼ OF SECTION 13, MONUMENTED BY BLM AC'S AND BEARING N 00°32'26" W.



**GUNDERSON 13-11 PAD**

**DRG** **RIFFIN & ASSOCIATES, INC.**  
(307) 362-5028 1414 ELK ST., ROCK SPRINGS, WY 82901

**DRAWN: 10/11/2017 - TCM**

**SCALE: 1" = 1000'**

**REVISED: N/A -**

**DRG JOB No. 21443**

**A3-14-16E**

**PLAT OF DRILLING LOCATION IN**  
**NESW, SECTION 13, FOR**  
**LARAMIE ENERGY, LLC.**

**1591' F/SL, & 1676' F/WL, SECTION 13,**  
**T. 9 S., R. 94 W., 6TH P.M.,**  
**MESA COUNTY, COLORADO**

