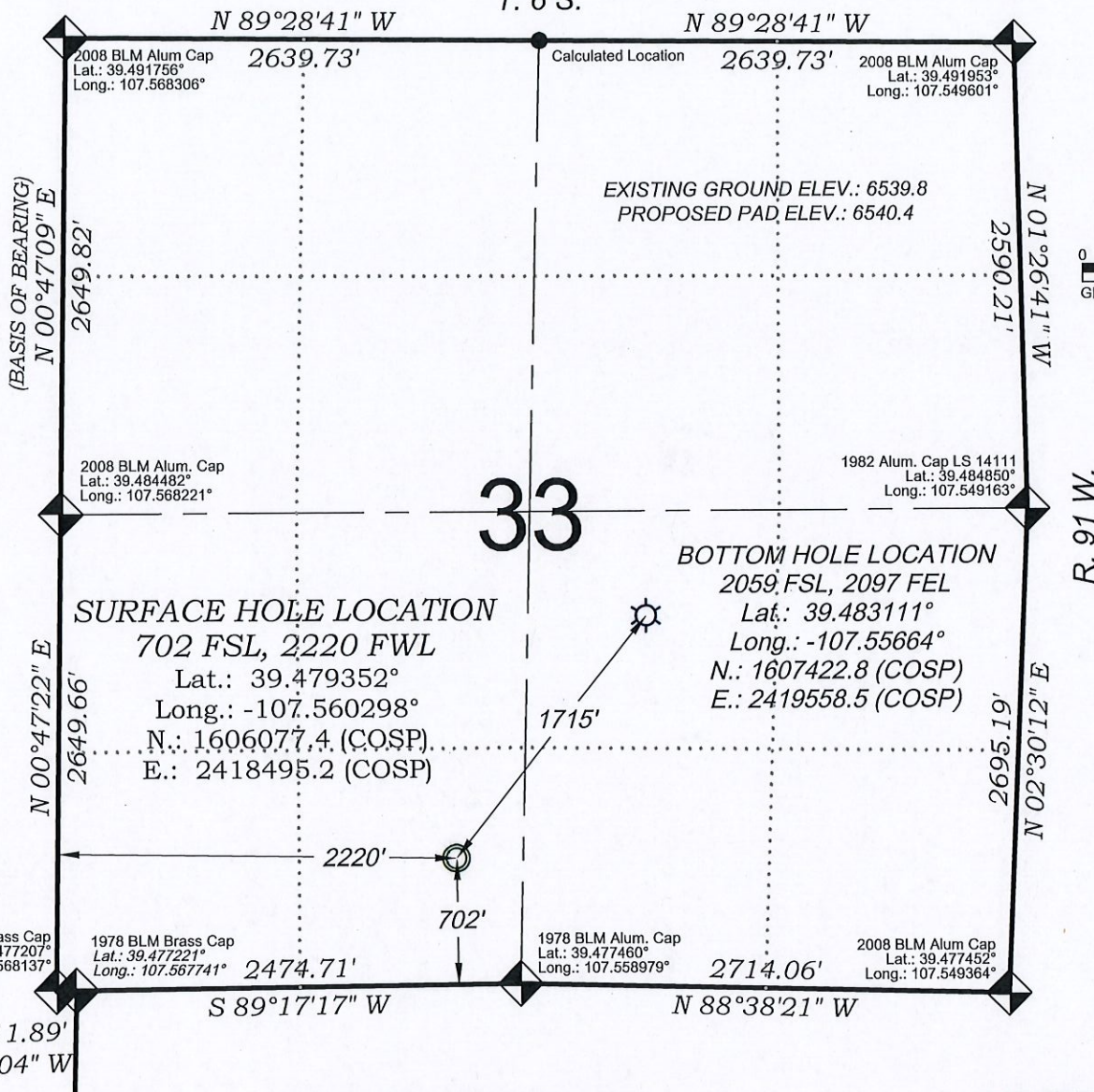


Federal 33C-33-691

T. 6 S.



33

BOTTOM HOLE LOCATION

2059 FSL, 2097 FEL
Lat.: 39.483111°
Long.: -107.55664°
N.: 1607422.8 (COSP)
E.: 2419558.5 (COSP)

SURFACE HOLE LOCATION

702 FSL, 2220 FWL
Lat.: 39.479352°
Long.: -107.560298°
N.: 1606077.4 (COSP)
E.: 2418495.2 (COSP)

SEE CONSTRUCTION LAYOUT PLAT
FOR VISIBLE IMPROVEMENTS
WITHIN 500' OF THIS LOCATION

SURVEYORS STATEMENT

I, MICHAEL J. LANGHORNE, A REGISTERED LAND SURVEYOR IN THE STATE OF COLORADO DO HEREBY CERTIFY THAT THE SURVEY SHOWN HEREON WAS PREPARED UNDER MY DIRECT SUPERVISION AND HAS BEEN STAKED ON THE GROUND AS SHOWN ON THE PLAT AND CHECKING THAT THIS MAP IS A TRUE REPRESENTATION THEREOF.

Michael J. Langhorne

MICHAEL J. LANGHORNE, COLORADO REGISTRATION NO. 36572
FOR AND ON BEHALF OF
BOOKCLIFF SURVEY SERVICES, INC.

REFERENCES

- 1) Corrective Dependent Resurvey T. 6 S., R. 91 W., 6th P.M (GLO PLAT)
- 2) U.S.G.S. QUAD: Gibson Gulch, CO

REVISED: 10/9/17

136 East Third Street
Rifle, Colorado
81650 Ph. (970)
625-2720 Fax (970)
625-2773



BOOKCLIFF
Survey Services, Inc.

SURVEY DATE: 11/9/16
MAP DATE: 11/18/16
SCALE: 1" = 1000'
PLAT: 1 of 10
PROJECT: VG

- LEGEND -

FIELD LOCATED SECTION
MONUMENTS AS DESCRIBED



FIELD SURVEYED
WELL LOCATION



CALCULATED BOTTOM
HOLE LOCATION



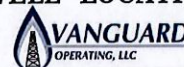
CALCULATED SECTION
CORNER LOCATION



NOTES

- 1) ELEVATIONS BASED ON N.A.V.D. 1988 PUBLISHED COORDINATES.
- 2) LATITUDES AND LONGITUDES ARE BASE ON NAD 83, PUBLISHED COORDINATES
- 3) STATE PLANE COORDINATES ARE BASED ON COLORADO CENTRAL ZONE, U.S. SURVEY FEET.
- 4) ELEVATION MASK SET TO 15"
- 5) GPS OPERATOR J. KIRKPATRICK, OBSERVED A PDOP 1.8 ON SURVEY POINT NUMBER 251.
- 6) SURFACE AND BOTTOM HOLE LOCATIONS ARE MEASURED 90° FROM SECTION LINES.

WELL LOCATION PLAT Prepared for:



Vanguard Operating, LLC

SE1/4 SW1/4, SECTION 33
T. 6 S., R. 91 W. of the 6th. P.M.
GARFIELD COUNTY, COLORADO