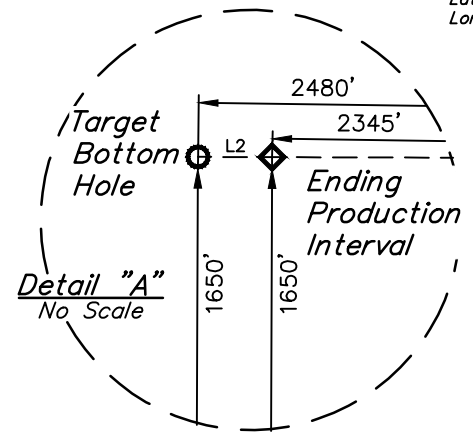
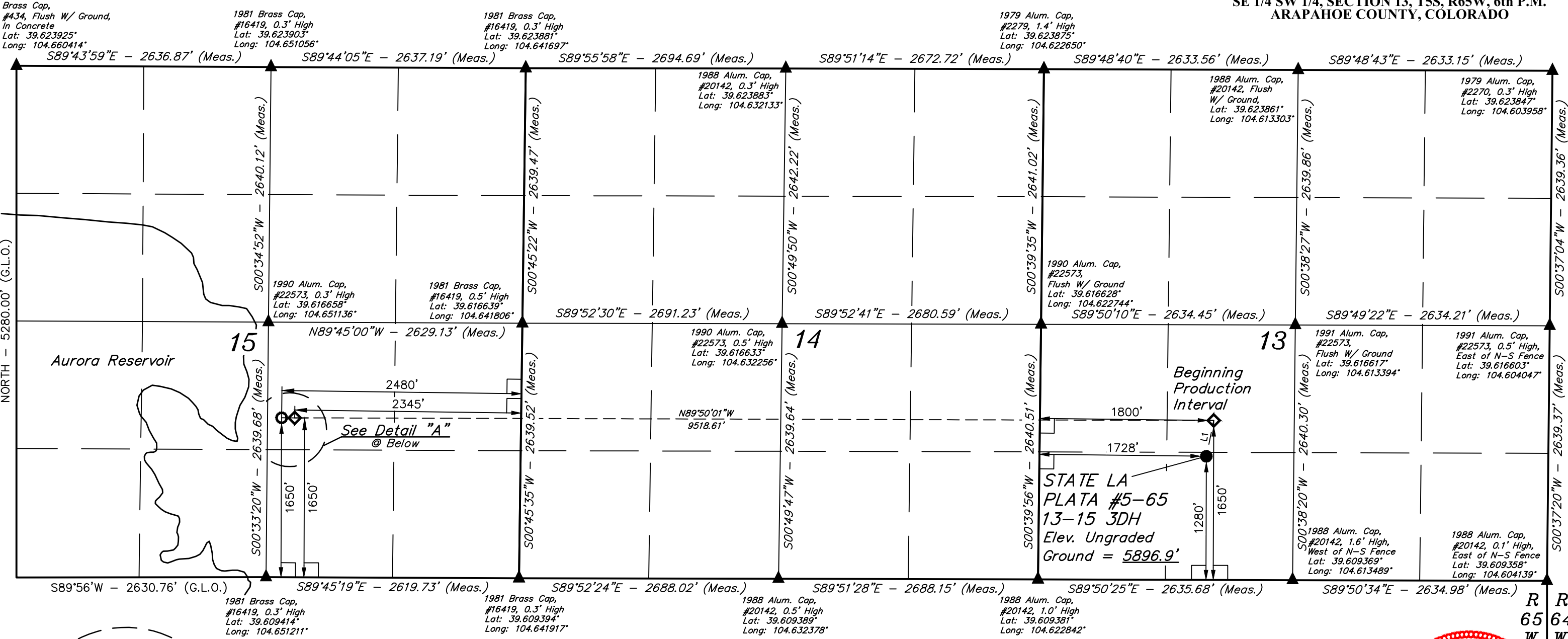


T5S, R65W, 6th P.M.

ConocoPhillips Company

STATE LA PLATA #5-65 13-15 3DH  
SE 1/4 SW 1/4, SECTION 13, T5S, R65W, 6th P.M.  
ARAPAHOE COUNTY, COLORADO



LINE TABLE		
LINE	DIRECTION	LENGTH
L1	N11°39'15"E	377.63'
L2	N89°45'19"W	135.01'

**BASIS OF BEARINGS**  
BASIS OF BEARINGS IS A G.P.S. OBSERVATION

**BASIS OF ELEVATION**  
BENCHMARK 374 LOCATED ON THE SECTION LINE BETWEEN SECTIONS 12 & 13, T5S, R64W, 6th. P.M., TAKEN FROM 1988 PUBLISHED DATUM BY THE UNITED STATES DEPARTMENT OF THE INTERIOR, GEOLOGICAL SURVEY AS BEING 6054.61 FEET.

CERTIFICATE OF REGISTRATION  
THIS IS TO CERTIFY THAT THE ABOVE PLAT WAS PREPARED FROM FIELD NOTES OF ACTUAL SURVEYS MADE BY ME OR UNDER MY SUPERVISION AND THAT THE SAME ARE TRUE AND CORRECT TO THE BEST OF MY KNOWLEDGE AND BELIEF.

REGISTERED LAND SURVEYOR  
REGISTRATION NO. 28285  
STATE OF COLORADO  
JUL 17 2017

**LEGEND:**

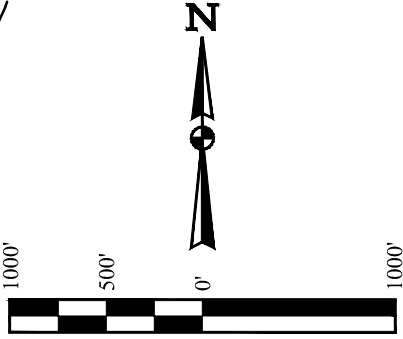
— = 90° SYMBOL

● = PROPOSED WELLHEAD.

◆ = PRODUCTION INTERVAL.

○ = TARGET BOTTOM HOLE.

▲ = SECTION CORNERS LOCATED. (NAD 83)



NAD 83 (SURFACE LOCATION)	NAD 83 (BEG. PROD. INTERVAL)	NAD 83 (ENDING PROD. INTERVAL)	NAD 83 (TARGET BOTTOM HOLE)
LATITUDE = 39°36'46.39" (39.612886)	LATITUDE = 39°36'50.05" (39.613903)	LATITUDE = 39°36'50.18" (39.613939)	LATITUDE = 39°36'50.19" (39.613942)
LONGITUDE = 104°36'59.98" (104.616661)	LONGITUDE = 104°36'59.01" (104.616392)	LONGITUDE = 104°39'00.61" (104.650169)	LONGITUDE = 104°39'02.33" (104.650647)
NAD 27 (SURFACE LOCATION)	NAD 27 (BEG. PROD. INTERVAL)	NAD 27 (ENDING PROD. INTERVAL)	NAD 27 (TARGET BOTTOM HOLE)
LATITUDE = 39°36'46.44" (39.612900)	LATITUDE = 39°36'50.09" (39.613914)	LATITUDE = 39°36'50.23" (39.613953)	LATITUDE = 39°36'50.23" (39.613953)
LONGITUDE = 104°36'58.10" (104.616139)	LONGITUDE = 104°36'57.13" (104.615869)	LONGITUDE = 104°38'58.72" (104.649644)	LONGITUDE = 104°39'00.44" (104.650122)
STATE PLANE NAD 83 (CO. CENTRAL)	STATE PLANE NAD 83 (CO. CENTRAL)	STATE PLANE NAD 83 (CO. CENTRAL)	STATE PLANE NAD 83 (CO. CENTRAL)
N: 1649332.35 E: 3248860.49	N: 1649702.90 E: 3248932.68	N: 1649625.86 E: 3239417.31	N: 1649624.95 E: 3239282.34
STATE PLANE NAD 27 (CO. CENTRAL)	STATE PLANE NAD 27 (CO. CENTRAL)	STATE PLANE NAD 27 (CO. CENTRAL)	STATE PLANE NAD 27 (CO. CENTRAL)
N: 649325.40 E: 2249014.62	N: 649695.95 E: 2249086.80	N: 649618.73 E: 2239571.50	N: 649617.82 E: 2239436.54



**UELS, LLC**  
Corporate Office \* 85 South 200 East  
Vernal, UT 84078 \* (435) 789-1017

SURVEYED BY	DATE		
DALLAS NIELSON, C.M.	02-10-16		
DRAWN BY	DATE		
J.J.	03-16-16		
SCALE	1" = 1000'		
WELL LOCATION PLAT			

REV: 1 10-05-17 J.J. (SL, BPI, EPI & TBH CHANGE) PDOP = 1.6