



LWD MEMORY LOG - RUN 1

Gamma Ray

Scale:		Company: Noble Energy				
1:1200 TVD		Well: Wells Ranch BB11-650				
Depth Reference:		Field: Weld County(Noble NAD 83 Grid)				
Driller's Depth		County: Weld				
Status:		State: Colorado				
Final Print		Other Services:				
API No: 05-123-44961-00		Surface Location: Latitude: 040° 24' 45.648" N Longitude: 104° 24' 45.468" W				
Job ID: 8645722		SEC: 11 TWN: 5N RGE: 63W				
Permanent Datum (P.D.): Ground Level		Elevation: 4668.00 ft				
Log Measured From: Rig Floor		Above P.D. 30.00 ft				
Elev. KB: N/A		Elev. DF: 4698.00 ft				
Elev. GL: 4668.00 ft						
Dates		Interval Logged				
Date From: 2017-08-24		Top: (ft) 1934.00				
Date To: 2017-08-25		Bottom: (ft) 14088.00				
Spud Date: 2017-08-23		Azi Reference North: Grid				
		Total Magnetic Field Strength: (nT) 52322				
		Mag to Reference North Correction: (deg) 7.29 E				
Borehole Record		Casing Record				
Hole Size (in)	From (ft)	To (ft)	Size (in)	Weight (lb/ft)	From (ft)	To (ft)
8.500	1907.00	14088.00	9.625	36.00	30.00	1921.00
Type	From (ft)	To (ft)	Hole Size (in)	Interval (ft)	Inc Az (Start)	Inc Az (End)
Oil Based Mud	1931.00	14088.00	8.500	14088.00	0.96 42.34	89.17 91.32
Acquisition System		Software Version		Other		
Baker Hughes Cadence		RT4.1		Rig: H&P 517		
PlotStudio		4.1.7f63.3		Contractor: Helmerich & Payne Drilling Co		
				District: RMA Unit: D&E		

"These interpretations and analyses ("Interpretations") are opinions provided by Baker Hughes Oilfield Operations, Inc ("Baker Hughes"), based upon industry practice, empirical relationships, assumptions and measurements, (many of which may be provided by the customer). The Interpretations are not infallible and may be subject to different opinions. Thus, Baker Hughes does not warrant their accuracy, correctness, or completeness, or that the customer's and/or any third party's reliance on such Interpretations will accomplish any particular results. The customer assumes full responsibility for the use of the Interpretations and for decisions based thereon and the customer agrees to release, defend and indemnify Baker Hughes, its parent, subsidiaries and affiliated or related entities, and subcontractors, together with its and their officers, directors, employees, agents and invitees against, any and all claims, losses, damages, or expenses sustained by the customer or any third party arising out of reliance upon or use of the Interpretations, without regard to the cause(s) thereof, including without limitation any form of negligence on the part of Baker Hughes. Unless other contract terms have been agreed to by the parties, each party's liabilities and obligations shall be governed by Baker Hughes Incorporated's Worldwide Terms and Conditions."

Log Run Summary

Run No	Bit Run No.	Bit Size (in)	Bit Type	Bit Gauge Length (in)	Assembly Type	Logged Interval		Bit Depth Interval		Date / Time		Circ. Hours (h)
						Top	Bottom	From	To	Start Logging	End Logging	
						(ft)	(ft)	(ft)	(ft)			
1	1	8.500	PDC	2.00	AutoTrak Curve	1911.00	14064.00	1935.00	14088.00	2017-08-24 11:56	2017-08-26 06:45	37.46

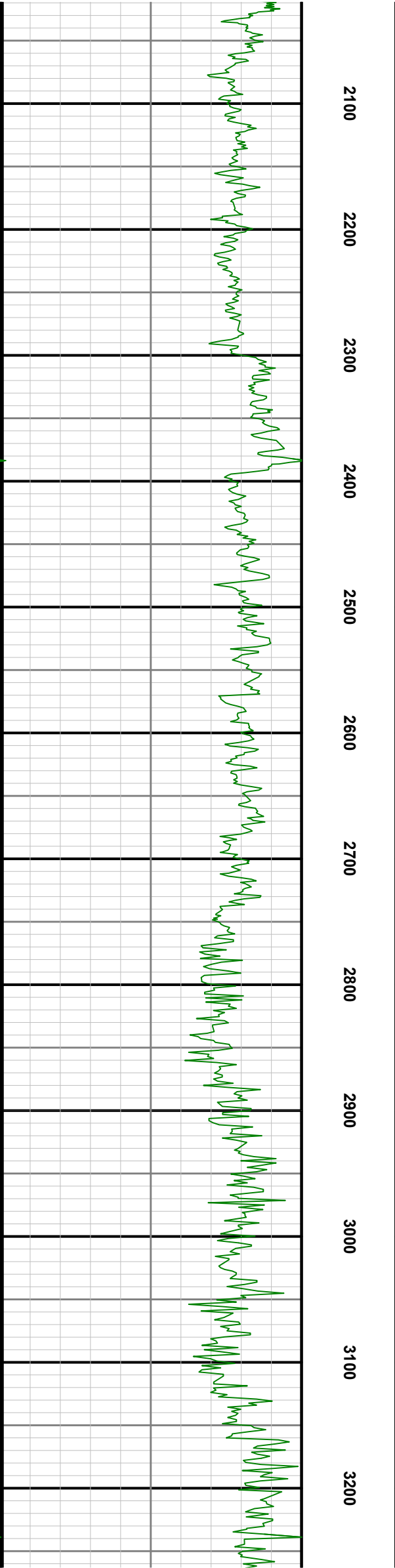
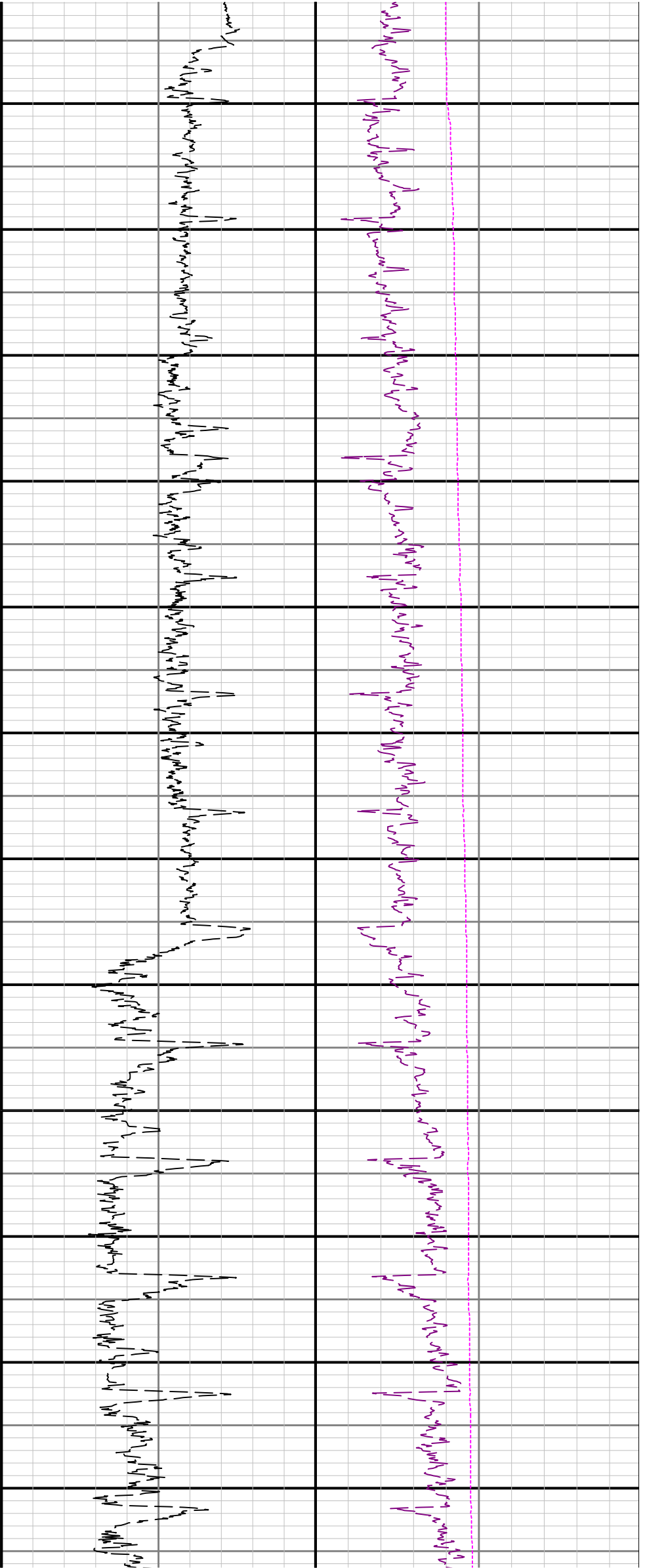
Crew

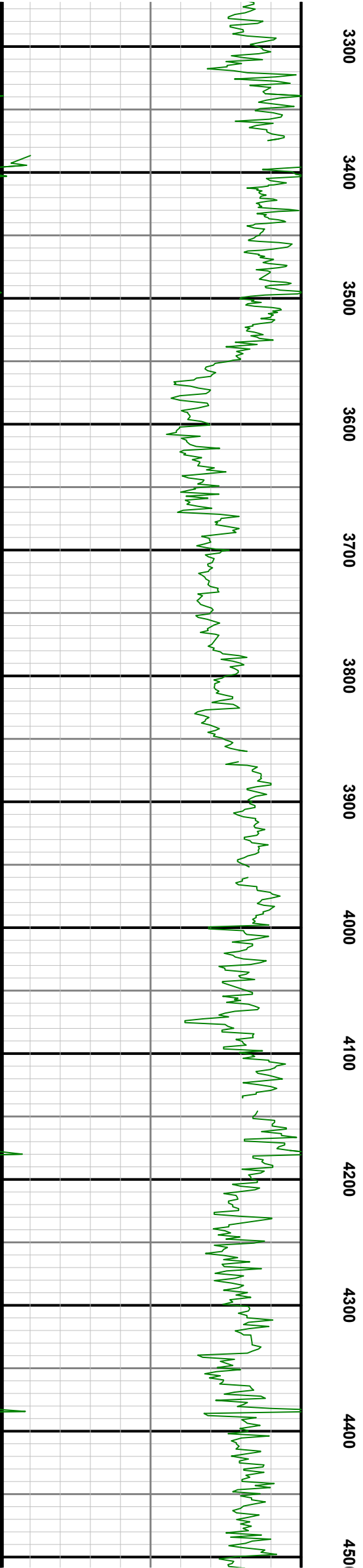
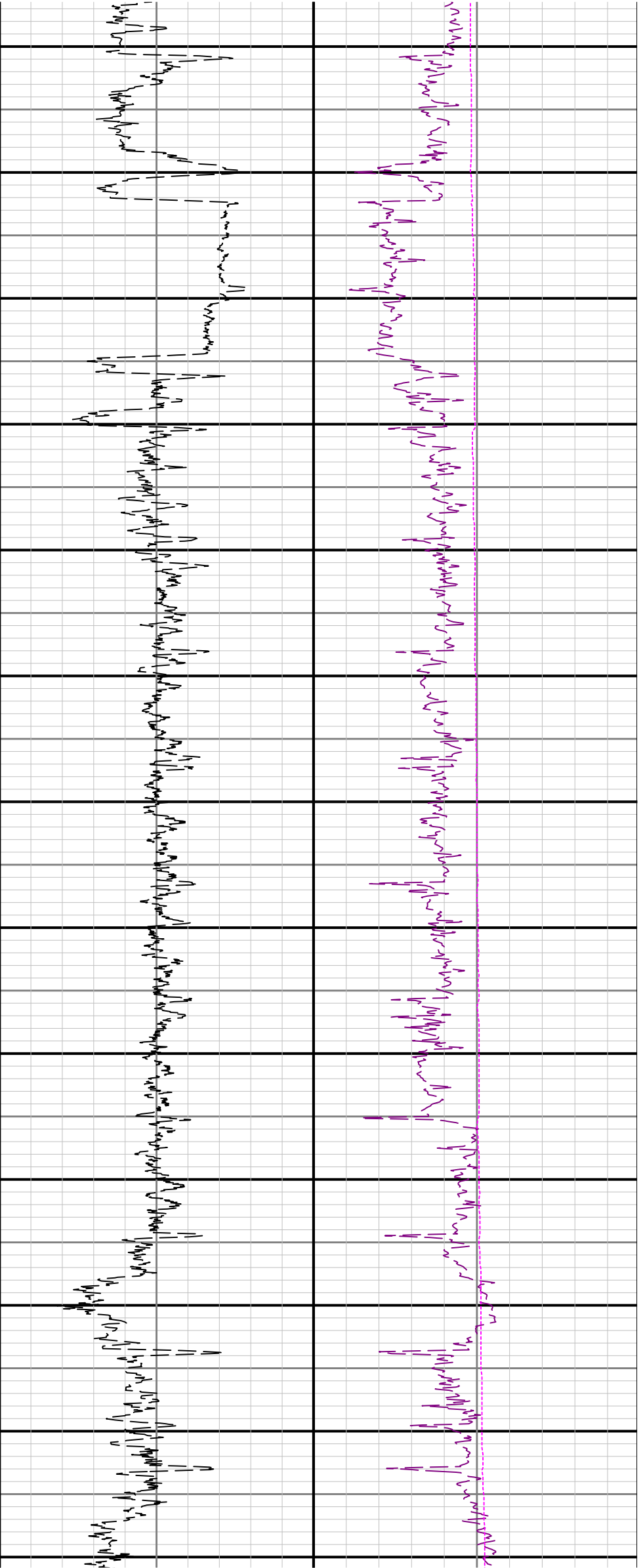
Name	Arrive Wellsite	Depart Wellsite	Name	Arrive Wellsite	Depart Wellsite	Name	Arrive Wellsite	Depart Wellsite
Mark Herpin	2017-08-24	2017-08-26	Ty Jackson	2017-08-24	2017-08-26			

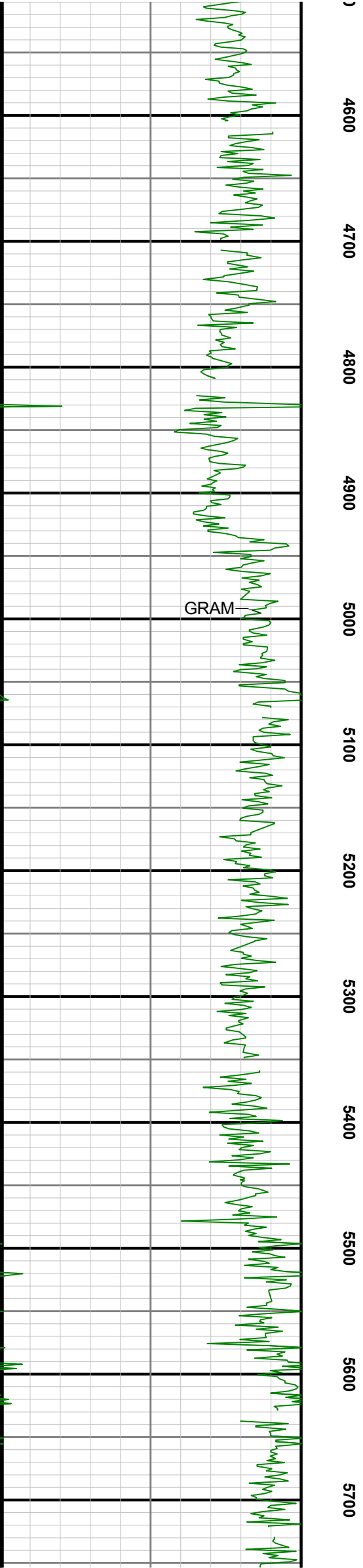
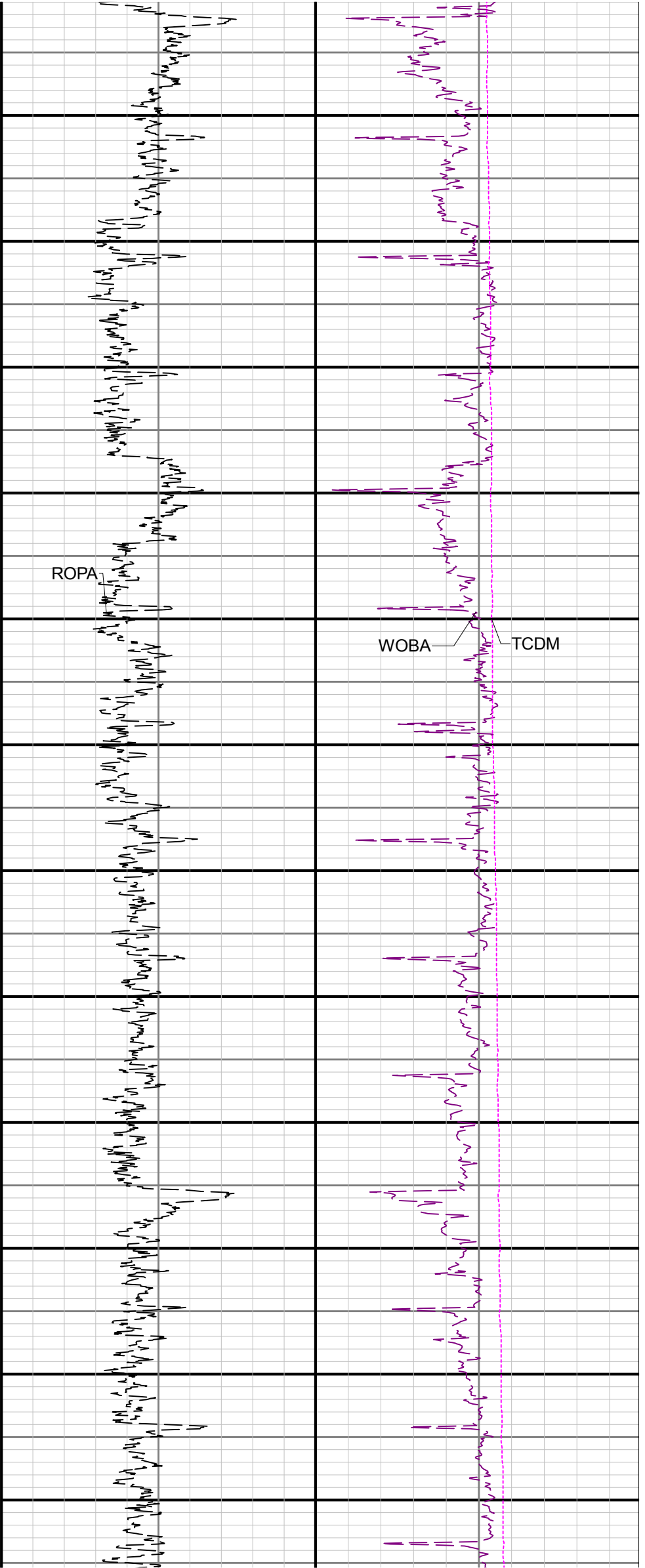
Mud Properties Record

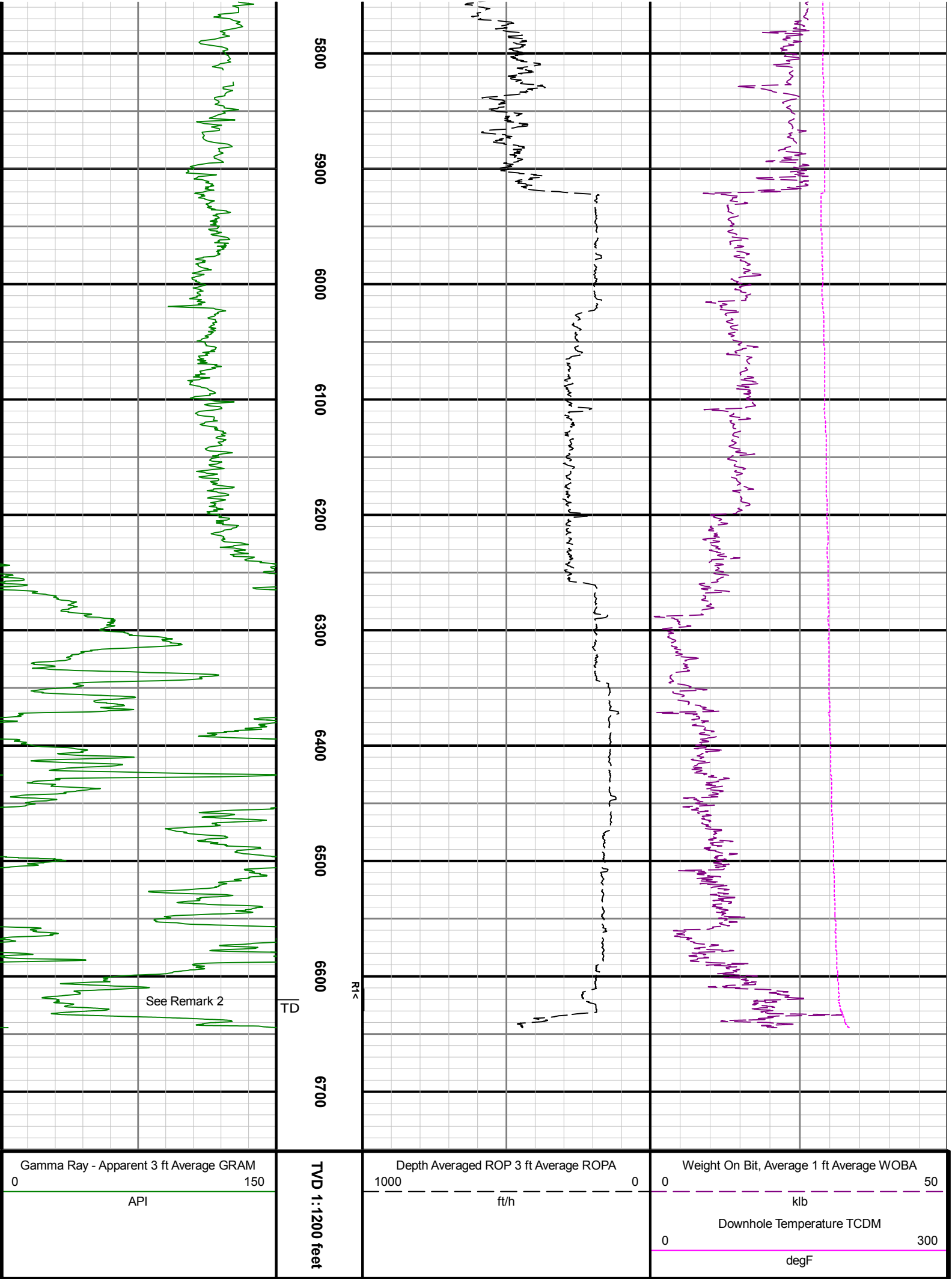
Date / Time	Run No.	Measured Depth (ft)	Mud Type	Density (ppg)	Viscosity (cP)	pH	Fluid Loss (cm3)	Oil / Water	Source	Total Chlorides (ppm)	K+ (%)
2017-08-22 18:08	1	1900.00	Oil Based Mud	9.2	9	N/A	15.0	85/15	Active Pit	24000	0.00

<div><div><div></div><div>BAKER HUGHES</div></div></div>		<div><div>Company</div><div>Well</div><div>Interval</div><div>Created</div></div> <div><div>Noble Energy</div><div>Wells Ranch BB11-650</div><div>Date From: 2017-08-24 05:56:16</div><div>Date To: 2017-08-25 23:56:04</div><div>2017-08-27 12:37:17</div></div>	<div><div>Top: 0.00</div><div>Bottom: 14088.00</div></div>	
<div><div>Gamma Ray - Apparent 3 ft Average GRAM</div><div>0150</div><div>API</div></div>	<div><div>TVD 1:1200 feet</div><div>1800</div><div>1900</div><div>2000</div></div>	<div><div>Depth Averaged ROP 3 ft Average ROPA</div><div>10000</div><div>ft/h</div></div>	<div><div>Weight On Bit, Average 1 ft Average WOBA</div><div>050</div><div>klb</div><div>Downhole Temperature TCDM</div><div>0300</div><div>degF</div></div>	
<div><div>See Remark 1</div><div>GRAM</div></div>	<div><div>>R1</div></div>	<div><div>ROPA</div></div>	<div><div>WOBA</div><div>TCDM</div></div>	









Directional Survey Summary			
Latitude:	040° 24' 45.648" N	Longitude:	104° 24' 45.468" W
North Reference:	Grid	Drill Depth Zero:	Rig Floor
Vertical Datum is:	Ground Level	Vertical Datum to DDZ: (ft)	30.00
Vertical Section North: (ft)	0.00	Vertical Section East: (ft)	0.00
Vertical Section Azimuth: (deg)	85.86		
Grid Convergence: (deg)	-0.70	Magnetic Declination: (deg)	7.99
Total Correction: (deg)	7.29	TVD Calculation Method:	Minimum Curvature

Magnetic Correction:		Off		Local Magnetic Field: (nT)					52322				
Local Magnetic Dip Angle: (deg)		67.08		Local Gravity Field: (m/s2)					9.800				
Tie-In / Projection	Measured Depth (ft)	Inclination (deg)	Azimuth (deg)	Temperature (degF)	North (ft)	East (ft)	True Vertical Depth (ft)	TVD Subsea (ft)	Vertical Section (ft)	Course Length (ft)	Dog Leg Severity (deg/100ft)	Build Rate (deg/100ft)	Turn Rate (deg/100ft)
Tie-In	0.00	0.00	0.00	N/A	0.00	0.00	0.00	-4698.00	0.00	0.00	0.00	0.00	0.00
	86.00	0.19	313.41	N/A	0.10	-0.10	86.00	-4612.00	-0.10	86.00	0.22	0.22	-54.17
	183.00	0.33	211.44	N/A	-0.03	-0.37	183.00	-4515.00	-0.37	97.00	0.43	0.14	-105.12
	277.00	0.28	14.78	N/A	-0.04	-0.45	277.00	-4421.00	-0.45	94.00	0.64	-0.05	173.77
	372.00	0.32	280.49	N/A	0.23	-0.65	372.00	-4326.00	-0.63	95.00	0.46	0.04	-99.25
	467.00	0.17	208.16	N/A	0.16	-0.98	467.00	-4231.00	-0.96	95.00	0.33	-0.16	-76.14
	561.00	0.90	279.75	N/A	0.16	-1.77	560.99	-4137.01	-1.75	94.00	0.92	0.78	76.16
	656.00	0.42	273.13	N/A	0.31	-2.85	655.99	-4042.01	-2.82	95.00	0.51	-0.51	-6.97
	750.00	0.43	266.61	N/A	0.30	-3.55	749.98	-3948.02	-3.52	94.00	0.05	0.01	-6.94
	845.00	0.28	301.33	N/A	0.40	-4.10	844.98	-3853.02	-4.06	95.00	0.27	-0.16	36.55
	939.00	0.29	221.47	N/A	0.34	-4.46	938.98	-3759.02	-4.42	94.00	0.39	0.01	-84.96
	1034.00	0.85	243.33	N/A	-0.15	-5.25	1033.98	-3664.02	-5.24	95.00	0.62	0.59	23.01
	1128.00	0.68	268.41	N/A	-0.48	-6.43	1127.97	-3570.03	-6.45	94.00	0.40	-0.18	26.68
	1223.00	0.38	264.47	N/A	-0.53	-7.30	1222.96	-3475.04	-7.32	95.00	0.32	-0.32	-4.15
	1317.00	0.41	271.45	N/A	-0.55	-7.95	1316.96	-3381.04	-7.97	94.00	0.06	0.03	7.43
	1412.00	0.85	284.77	N/A	-0.36	-8.97	1411.96	-3286.04	-8.97	95.00	0.49	0.46	14.02
	1507.00	0.69	324.25	N/A	0.28	-9.99	1506.95	-3191.05	-9.94	95.00	0.57	-0.17	41.56
	1601.00	0.54	331.52	N/A	1.13	-10.53	1600.94	-3097.06	-10.42	94.00	0.18	-0.16	7.73
	1696.00	0.69	341.13	N/A	2.07	-10.93	1695.94	-3002.06	-10.75	95.00	0.19	0.16	10.12
	1790.00	0.83	5.02	N/A	3.28	-11.05	1789.93	-2908.07	-10.79	94.00	0.37	0.15	25.41
	1885.00	0.85	29.59	N/A	4.58	-10.64	1884.92	-2813.08	-10.29	95.00	0.38	0.02	25.86
	1916.00	0.96	42.34	N/A	4.97	-10.36	1915.92	-2782.08	-9.97	31.00	0.74	0.35	41.13
	1979.00	0.65	54.51	N/A	5.57	-9.71	1978.91	-2719.09	-9.28	63.00	0.56	-0.49	19.32
	2073.00	0.07	353.69	N/A	5.94	-9.28	2072.91	-2625.09	-8.83	94.00	0.66	-0.62	-64.70
	2168.00	0.19	278.15	N/A	6.02	-9.44	2167.91	-2530.09	-8.98	95.00	0.20	0.13	-79.52
	2263.00	2.63	297.11	N/A	7.03	-11.54	2262.87	-2435.13	-11.00	95.00	2.58	2.57	19.96
	2357.00	5.27	300.11	N/A	10.18	-17.19	2356.64	-2341.36	-16.41	94.00	2.82	2.81	3.19
	2452.00	7.60	308.14	N/A	16.25	-25.91	2451.04	-2246.96	-24.67	95.00	2.62	2.45	8.45
	2546.00	9.68	312.52	N/A	25.43	-36.63	2543.97	-2154.03	-34.69	94.00	2.32	2.21	4.66
	2641.00	9.74	309.67	N/A	35.96	-48.70	2637.60	-2060.40	-45.98	95.00	0.51	0.06	-3.00
	2735.00	9.79	305.67	N/A	45.69	-61.31	2730.24	-1967.76	-57.85	94.00	0.72	0.05	-4.26
	2830.00	9.78	302.72	N/A	54.77	-74.66	2823.86	-1874.14	-70.51	95.00	0.53	-0.01	-3.11
	2924.00	9.66	299.45	N/A	62.96	-88.25	2916.51	-1781.49	-83.47	94.00	0.60	-0.13	-3.48
	3019.00	9.68	295.81	N/A	70.36	-102.38	3010.16	-1687.84	-97.03	95.00	0.64	0.02	-3.83
	3113.00	9.71	292.54	N/A	76.83	-116.81	3102.82	-1595.18	-110.96	94.00	0.59	0.03	-3.48
	3208.00	9.62	289.80	N/A	82.59	-131.68	3196.48	-1501.52	-125.37	95.00	0.49	-0.09	-2.88
	3302.00	9.54	291.94	N/A	88.17	-146.30	3289.16	-1408.84	-139.55	94.00	0.39	-0.09	2.28
	3397.00	9.59	299.76	N/A	95.04	-160.47	3382.85	-1315.15	-153.19	95.00	1.37	0.05	8.23
	3491.00	9.54	308.39	N/A	103.76	-173.37	3475.55	-1222.45	-165.43	94.00	1.53	-0.05	9.18
	3586.00	9.72	302.95	N/A	113.01	-186.27	3569.21	-1128.79	-177.63	95.00	0.98	0.19	-5.73
	3680.00	9.77	296.95	N/A	120.94	-200.04	3661.86	-1036.14	-190.79	94.00	1.08	0.05	-6.38
	3775.00	9.59	295.30	N/A	127.98	-214.38	3755.50	-942.50	-204.58	95.00	0.35	-0.19	-1.74
	3869.00	9.52	293.08	N/A	134.37	-228.61	3848.20	-849.80	-218.31	94.00	0.40	-0.07	-2.36
	3963.00	9.56	289.09	N/A	139.97	-243.14	3940.90	-757.10	-232.40	94.00	0.70	0.04	-4.24
	4058.00	9.43	289.25	N/A	145.12	-257.94	4034.60	-663.40	-246.79	95.00	0.14	-0.14	0.17
	4153.00	9.59	293.75	N/A	150.87	-272.53	4128.29	-569.71	-260.93	95.00	0.80	0.17	4.74
	4247.00	9.53	299.40	N/A	157.84	-286.48	4220.99	-477.01	-274.34	94.00	1.00	-0.06	6.01
	4342.00	9.51	303.95	N/A	166.09	-299.84	4314.68	-383.32	-287.07	95.00	0.79	-0.02	4.79
	4436.00	9.45	310.32	N/A	175.42	-312.17	4407.40	-290.60	-298.69	94.00	1.12	-0.06	6.78
	4531.00	9.58	317.73	N/A	186.31	-323.43	4501.10	-196.90	-309.14	95.00	1.30	0.14	7.80
	4625.00	9.59	318.39	N/A	197.96	-333.89	4593.79	-104.21	-318.73	94.00	0.12	0.01	0.70
	4720.00	9.49	309.84	N/A	208.89	-345.16	4687.48	-10.52	-329.18	95.00	1.49	-0.11	-9.00
	4814.00	9.56	306.12	N/A	218.46	-357.42	4780.18	82.18	-340.71	94.00	0.66	0.07	-3.96
	4909.00	9.58	298.49	N/A	226.88	-370.74	4873.86	175.86	-353.39	95.00	1.33	0.02	-8.03
	5003.00	9.20	303.83	N/A	234.79	-383.85	4966.61	268.61	-365.90	94.00	1.01	-0.40	5.68
	5097.00	9.40	316.08	N/A	244.51	-395.42	5059.38	361.38	-376.74	94.00	2.11	0.21	13.03
	5192.00	9.16	311.46	N/A	255.10	-406.47	5153.14	455.14	-386.99	95.00	0.82	-0.25	-4.86
	5286.00	9.93	311.98	N/A	265.48	-418.10	5245.84	547.84	-397.85	94.00	0.82	0.82	0.55
	5381.00	9.53	308.65	N/A	275.87	-430.33	5339.47	641.47	-409.29	95.00	0.73	-0.42	-3.51
	5475.00	9.88	305.67	N/A	285.43	-442.96	5432.13	734.13	-421.20	94.00	0.65	0.37	-3.17
	5569.00	9.98	302.18	N/A	294.47	-456.41	5524.72	826.72	-433.96	94.00	0.65	0.11	-3.71
	5664.00	10.02	297.34	N/A	302.65	-470.72	5618.28	920.28	-447.64	95.00	0.89	0.04	-5.09
	5759.00	9.93	293.16	N/A	309.67	-485.59	5711.84	1013.84	-461.97	95.00	0.77	-0.09	-4.40
	5853.00	9.68	289.13	N/A	315.45	-500.51	5804.47	1106.47	-476.43	94.00	0.78	-0.27	-4.29
	5948.00	9.55	295.35	N/A	321.44	-515.18	5898.14	1200.14	-490.63	95.00	1.10	-0.14	6.55
	6042.00	7.35	356.93	N/A	330.80	-522.56	5991.28	1293.28	-497.31	94.00	9.40	-2.34	65.51
	6137.00	10.46	52.90	N/A	342.09	-515.99	6085.29	1387.29	-489.95	95.00	9.24	3.27	58.92
	6232.00	16.09	73.55	N/A	351.03	-496.46	6177.76	1479.76	-469.83	95.00	7.66	5.93	21.74
	6326.00	22.46	81.44	N/A	357.40	-466.18	6266.46	1568.46	-439.16	94.00	7.31	6.78	8.39
	6421.00	31.29	77.92	N/A	365.28	-424.02	6351.12	1653.12	-396.55	95.00	9.44	9.29	-3.71
	6515.00	40.94	73.29	N/A	379.28	-370.52	6426.98	1728.98	-342.17	94.00	10.66	10.27	-4.93
	6610.00	50.24	76.95	N/A	396.52	-304.98	6493.40	1795.40	-275.56	95.00	10.17	9.79	3.85
	6704.00	58.83	84.32	N/A	408.69	-229.56	6547.94	1849.94	-199.45	94.00	11.14	9.14	7.84
	6799.00	69.24	88.31	N/A	414.04	-144.46	6589.49	1891.49	-114.19	95.00	11.59	10.96	4.20
	6893.00	77.56	88.91	N/A	416.21	-54.48	6616.32	1918.32	-24.29	94.00	8.87	8.85	0.64
	6988.00	86.98	89.18	N/A	417.77	39.54	6629.09	1931.09	69.59	95.00	9.92	9.92	0.28
	7083.00	87.54	89.32	N/A	419.02	134.42	6633.63	1935.63	164.32	95.00	0.61	0.59	0.15

	7177.00	86.98	88.86	N/A	420.51	228.30	6638.12	1940.12	258.06	94.00	0.77	-0.60	-0.49
	7272.00	88.74	88.88	N/A	422.38	323.21	6641.67	1943.67	352.86	95.00	1.85	1.85	0.02
	7366.00	89.02	88.94	N/A	424.17	417.18	6643.51	1945.51	446.71	94.00	0.30	0.30	0.06
	7461.00	89.75	89.61	N/A	425.37	512.16	6644.52	1946.52	541.53	95.00	1.04	0.77	0.71
	7555.00	91.11	91.88	N/A	424.15	606.14	6643.82	1945.82	635.18	94.00	2.82	1.45	2.41
	7650.00	91.11	92.13	N/A	420.82	701.07	6641.98	1943.98	729.62	95.00	0.26	0.00	0.26
	7744.00	90.37	90.82	N/A	418.40	795.03	6640.76	1942.76	823.16	94.00	1.60	-0.79	-1.39
	7839.00	90.34	91.05	N/A	416.85	890.01	6640.18	1942.18	917.78	95.00	0.24	-0.03	0.24
	7933.00	90.31	90.63	N/A	415.48	984.00	6639.64	1941.64	1011.43	94.00	0.45	-0.03	-0.45
	8028.00	90.43	89.76	N/A	415.15	1079.00	6639.03	1941.03	1106.15	95.00	0.92	0.13	-0.92
	8122.00	90.31	89.57	N/A	415.70	1172.99	6638.42	1940.42	1199.94	94.00	0.24	-0.13	-0.20
	8217.00	90.31	87.93	N/A	417.78	1267.97	6637.91	1939.91	1294.82	95.00	1.73	0.00	-1.73
	8311.00	90.31	88.41	N/A	420.78	1361.92	6637.40	1939.40	1388.74	94.00	0.51	0.00	0.51
	8406.00	90.25	89.45	N/A	422.55	1456.90	6636.94	1938.94	1483.60	95.00	1.10	-0.06	1.09
	8500.00	90.43	89.43	N/A	423.47	1550.89	6636.38	1938.38	1577.42	94.00	0.19	0.19	-0.02
	8595.00	90.28	89.55	N/A	424.32	1645.88	6635.79	1937.79	1672.22	95.00	0.20	-0.16	0.13
	8689.00	90.37	90.95	N/A	423.91	1739.88	6635.26	1937.26	1765.94	94.00	1.49	0.10	1.49
	8784.00	90.31	90.29	N/A	422.88	1834.87	6634.69	1936.69	1860.61	95.00	0.70	-0.06	-0.69
	8878.00	90.31	89.13	N/A	423.35	1928.87	6634.18	1936.18	1954.40	94.00	1.23	0.00	-1.23
	8973.00	90.18	89.68	N/A	424.34	2023.86	6633.78	1935.78	2049.22	95.00	0.59	-0.14	0.58
	9068.00	90.18	89.04	N/A	425.40	2118.85	6633.48	1935.48	2144.04	95.00	0.67	0.00	-0.67
	9162.00	89.88	86.51	N/A	429.05	2212.78	6633.43	1935.43	2237.98	94.00	2.71	-0.32	-2.69
	9257.00	89.54	83.44	N/A	437.37	2307.40	6633.91	1935.91	2332.95	95.00	3.25	-0.36	-3.23
	9351.00	88.80	83.09	N/A	448.39	2400.74	6635.27	1937.27	2426.85	94.00	0.87	-0.79	-0.37
	9446.00	88.55	82.52	N/A	460.29	2494.97	6637.47	1939.47	2521.68	95.00	0.66	-0.26	-0.60
	9541.00	88.55	85.92	N/A	469.85	2589.44	6639.87	1941.87	2616.60	95.00	3.58	0.00	3.58
	9635.00	89.32	88.32	N/A	474.57	2683.30	6641.62	1943.62	2710.56	94.00	2.68	0.82	2.55
	9730.00	90.03	89.23	N/A	476.60	2778.27	6642.16	1944.16	2805.43	95.00	1.21	0.75	0.96
	9824.00	90.06	89.89	N/A	477.32	2872.27	6642.09	1944.09	2899.23	94.00	0.70	0.03	0.70
	9919.00	90.37	90.06	N/A	477.37	2967.27	6641.73	1943.73	2993.99	95.00	0.37	0.33	0.18
	10014.00	90.28	89.14	N/A	478.03	3062.26	6641.19	1943.19	3088.78	95.00	0.97	-0.09	-0.97
	10109.00	89.32	90.45	N/A	478.37	3157.26	6641.52	1943.52	3183.55	95.00	1.71	-1.01	1.38
	10203.00	90.25	91.64	N/A	476.65	3251.24	6641.88	1943.88	3277.17	94.00	1.61	0.99	1.27
	10298.00	90.37	91.44	N/A	474.10	3346.20	6641.36	1943.36	3371.70	95.00	0.25	0.13	-0.21
	10392.00	90.40	92.00	N/A	471.28	3440.16	6640.73	1942.73	3465.20	94.00	0.60	0.03	0.60
	10487.00	90.25	92.12	N/A	467.87	3535.09	6640.19	1942.19	3559.65	95.00	0.20	-0.16	0.13
	10581.00	90.31	91.66	N/A	464.77	3629.04	6639.73	1941.73	3653.13	94.00	0.49	0.06	-0.49
	10676.00	90.40	91.18	N/A	462.41	3724.01	6639.14	1941.14	3747.68	95.00	0.51	0.09	-0.51
	10770.00	90.40	90.61	N/A	460.94	3818.00	6638.49	1940.49	3841.31	94.00	0.61	0.00	-0.61
	10865.00	90.22	88.04	N/A	462.06	3912.98	6637.97	1939.97	3936.13	95.00	2.71	-0.19	-2.71
	10960.00	90.28	87.99	N/A	465.35	4007.92	6637.56	1939.56	4031.06	95.00	0.08	0.06	-0.05
	11054.00	90.37	89.71	N/A	467.24	4101.90	6637.02	1939.02	4124.93	94.00	1.83	0.10	1.83
	11148.00	90.34	91.24	N/A	466.46	4195.89	6636.44	1938.44	4218.62	94.00	1.63	-0.03	1.63
	11243.00	90.25	91.47	N/A	464.21	4290.86	6635.95	1937.95	4313.18	95.00	0.26	-0.09	0.24
	11337.00	91.14	90.72	N/A	462.42	4384.84	6634.81	1936.81	4406.78	94.00	1.24	0.95	-0.80
	11432.00	91.20	89.26	N/A	462.43	4479.82	6632.87	1934.87	4501.51	95.00	1.54	0.06	-1.54
	11526.00	91.48	86.81	N/A	465.66	4573.73	6630.67	1932.67	4595.41	94.00	2.62	0.30	-2.61
	11621.00	90.92	85.59	N/A	471.95	4668.50	6628.68	1930.68	4690.39	95.00	1.41	-0.59	-1.28
	11716.00	90.95	85.59	N/A	479.25	4763.20	6627.13	1929.13	4785.37	95.00	0.03	0.03	0.00
	11810.00	90.80	86.53	N/A	485.71	4856.97	6625.70	1927.70	4879.36	94.00	1.01	-0.16	1.00
	11905.00	90.92	86.80	N/A	491.24	4951.80	6624.27	1926.27	4974.34	95.00	0.31	0.13	0.28
	12094.00	90.28	85.91	N/A	503.25	5140.40	6622.29	1924.29	5163.32	189.00	0.58	-0.34	-0.47
	12188.00	90.12	86.94	N/A	509.11	5234.22	6621.97	1923.97	5257.31	94.00	1.11	-0.17	1.10
	12283.00	90.22	87.44	N/A	513.77	5329.10	6621.68	1923.68	5352.29	95.00	0.54	0.11	0.53
	12378.00	90.06	87.83	N/A	517.69	5424.02	6621.45	1923.45	5447.24	95.00	0.44	-0.17	0.41
	12472.00	90.18	89.24	N/A	520.09	5517.99	6621.26	1923.26	5541.13	94.00	1.51	0.13	1.50
	12567.00	90.03	91.06	N/A	519.85	5612.98	6621.08	1923.08	5635.86	95.00	1.92	-0.16	1.92
	12661.00	90.18	91.52	N/A	517.73	5706.96	6620.91	1922.91	5729.44	94.00	0.51	0.16	0.49
	12756.00	89.91	90.95	N/A	515.68	5801.93	6620.83	1922.83	5824.02	95.00	0.66	-0.28	-0.60
	12851.00	90.12	90.36	N/A	514.60	5896.93	6620.81	1922.81	5918.69	95.00	0.66	0.22	-0.62
	12945.00	90.12	90.53	N/A	513.87	5990.92	6620.61	1922.61	6012.39	94.00	0.18	0.00	0.18
	13040.00	90.06	90.99	N/A	512.61	6085.92	6620.46	1922.46	6107.04	95.00	0.49	-0.06	0.48
	13134.00	90.06	91.72	N/A	510.38	6179.89	6620.36	1922.36	6200.61	94.00	0.78	0.00	0.78
	13229.00	90.15	92.07	N/A	507.24	6274.84	6620.19	1922.19	6295.08	95.00	0.38	0.09	0.37
	13323.00	90.06	90.18	N/A	505.40	6368.81	6620.02	1922.02	6388.68	94.00	2.01	-0.10	-2.01
	13418.00	90.15	88.31	N/A	506.65	6463.80	6619.84	1921.84	6483.51	95.00	1.97	0.09	-1.97
	13512.00	90.22	87.92	N/A	509.74	6557.75	6619.54	1921.54	6577.44	94.00	0.42	0.07	-0.41
	13607.00	90.22	88.16	N/A	512.99	6652.69	6619.18	1921.18	6672.37	95.00	0.25	0.00	0.25
	13702.00	90.28	88.10	N/A	516.09	6747.64	6618.76	1920.76	6767.29	95.00	0.09	0.06	-0.06
	13796.00	89.85	86.27	N/A	520.71	6841.52	6618.65	1920.65	6861.26	94.00	2.00	-0.46	-1.95
	13890.00	89.42	87.15	N/A	526.10	6935.37	6619.25	1921.25	6955.25	94.00	1.04	-0.46	0.94
	13985.00	89.05	89.92	N/A	528.53	7030.32	6620.52	1922.52	7050.13	95.00	2.94	-0.39	2.92
	14064.00	89.17	91.32	N/A	527.67	7109.30	6621.75	1923.75	7128.84	79.00	1.78	0.15	1.77
Projection	14088.00	89.17	91.32	N/A	527.12	7133.29	6622.10	1924.10	7152.73	24.00	0.00	0.00	0.00