

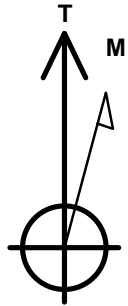
Clear Creek Resource Partners

Well Name: **Salt Ranch Fee 501-1015H**

Surface Location: Salt Ranch East 10 Pad Sec.10-T11N-R64W
 North American Datum 1983 , US State Plane 1983, Colorado Northern Zone
 Ground Elevation: 5433.0
 +N/-S+E/-W Northing Easting Latitude Longitude Slot
 0.0 0.0 1587572.04 3269150.06 40.942191 -104.525797
 Original Well Elev WELL @ 5456.0ft (Original Well Elev)

WELLBORE TARGET DETAILS

Name	TVD	+N/-S	+E/-W	Shape
SHL 357'FNL & 607'FEL, Sec.10	1.0	0.0	0.0	Point
LPL 735'FNL & 440'FEL, Sec.10	7871.0	-376.4	203.1	Point
WP (501-1015H)	7900.0	-5079.7	642.5	Point
BHL 300'FSL & 440'FEL, Sec.15	7931.0	-10102.2	591.7	Point



Azimuths to True North
 Magnetic North: 8.55°

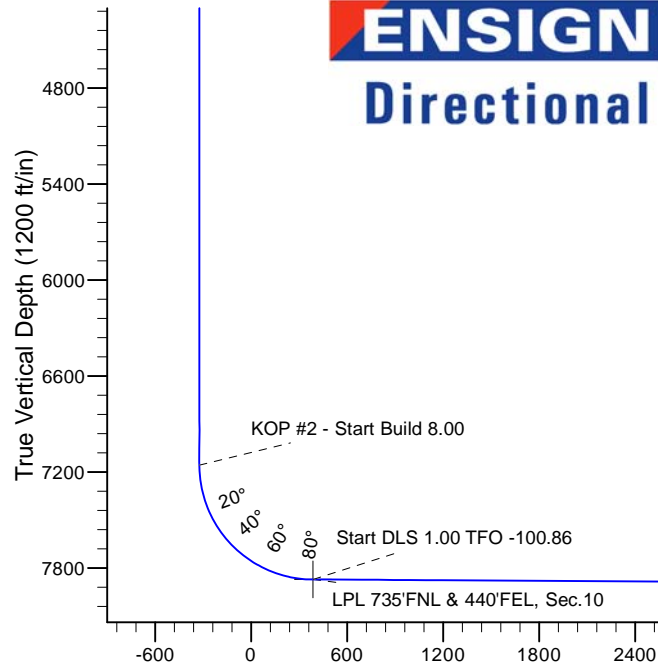
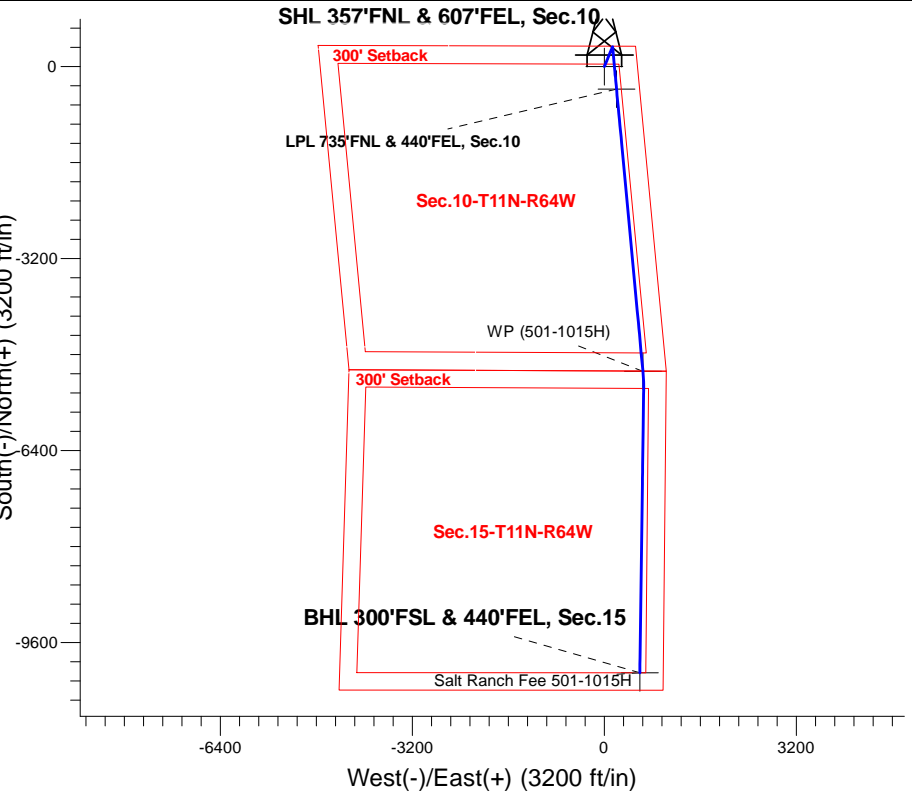
Magnetic Field
 Strength: 52814.1snT
 Dip Angle: 67.28°
 Date: 9/8/2017
 Model: HDGM

Salt Ranch East 10 Pad Sec.10-T11N-R64W
Salt Ranch Fee 501-1015H
Plan #2 (10-11-17)
12:05, October 11 2017

ANNOTATIONS

TVD	MD	Annotation
400.0	400.0	KOP - Start Build 1.50
3683.4	3701.9	Start Drop -2.00
7156.2	7175.4	KOP #2 - Start Build 8.00
7871.0	8296.4	Start DLS 1.00 TFO -100.86
7900.0	13020.3	Start DLS 2.00 TFO 90.04
7931.0	18043.6	TD at 18043.6

South(-)/North(+) (3200 ft/in)



ENSIGN
Directional

SECTION DETAILS

Sec	MD	Inc	Azi	TVD	+N/-S	+E/-W	Dleg	TFace	VSec	Target
1	0.0	0.00	0.00	0.0	0.0	0.0	0.00	0.00	0.0	
2	400.0	0.00	0.00	400.0	0.0	0.0	0.00	0.00	0.0	
3	823.1	6.35	22.42	822.2	21.6	8.9	1.50	22.42	-21.1	
4	3701.9	6.35	22.42	3683.3	315.8	130.3	0.00	0.00	-307.6	
5	4019.2	0.00	0.00	4000.0	332.0	137.0	2.00	180.00	-323.4	
6	7175.4	0.00	0.00	7156.2	332.0	137.0	0.00	0.00	-323.4	
7	8295.4	89.65	174.67	7871.0	-375.4	203.0	8.00	174.67	386.6	
8	8296.4	89.65	174.67	7871.0	-376.4	203.1	0.00	0.00	387.6	LPL 735'FNL & 440'FEL, Sec.10
9	8297.3	89.65	174.66	7871.0	-377.3	203.2	1.00	-100.86	388.5	
10	13020.3	89.65	174.66	7900.0	-5079.7	642.5	0.00	0.00	5108.6	WP (501-1015H)
11	13325.3	89.65	180.76	7901.9	-5384.3	654.6	2.00	90.04	5413.4	
12	18043.6	89.65	180.76	7931.0	-10102.2	591.7	0.00	0.00	10119.5	BHL 300'FSL & 440'FEL, Sec.15

Vertical Section at 176.65° (1200 ft/in)



Clear Creek Resource Partners

SEC.10-T11N-R64W

Salt Ranch East 10 Pad Sec.10-T11N-R64W

Salt Ranch Fee 501-1015H

Wellbore #1

Plan: Plan #2 (10-11-17)

Standard Planning Report

11 October, 2017

Database:	US_EDM	Local Co-ordinate Reference:	Well Salt Ranch Fee 501-1015H
Company:	Clear Creek Resource Partners	TVD Reference:	WELL @ 5456.0ft (Original Well Elev)
Project:	SEC.10-T11N-R64W	MD Reference:	WELL @ 5456.0ft (Original Well Elev)
Site:	Salt Ranch East 10 Pad Sec.10-T11N-R64W	North Reference:	True
Well:	Salt Ranch Fee 501-1015H	Survey Calculation Method:	Minimum Curvature
Wellbore:	Wellbore #1		
Design:	Plan #2 (10-11-17)		

Project	SEC.10-T11N-R64W, Weld County, CO		
Map System:	US State Plane 1983	System Datum:	Mean Sea Level
Geo Datum:	North American Datum 1983		Using Well Reference Point
Map Zone:	Colorado Northern Zone		Using geodetic scale factor

Site	Salt Ranch East 10 Pad Sec.10-T11N-R64W				
Site Position:		Northing:	1,587,572.01 usft	Latitude:	40.942190
From:	Lat/Long	Easting:	3,269,179.91 usft	Longitude:	-104.525689
Position Uncertainty:	0.0 ft	Slot Radius:	13-3/16 "	Grid Convergence:	0.63

Well	Salt Ranch Fee 501-1015H					
Well Position	+N/-S	0.4 ft	Northing:	1,587,572.04 usft	Latitude:	40.942191
	+E/-W	-29.8 ft	Easting:	3,269,150.07 usft	Longitude:	-104.525797
Position Uncertainty		0.0 ft	Wellhead Elevation:	0.0 ft	Ground Level:	5,433.0 ft

Wellbore	Wellbore #1				
Magnetics	Model Name	Sample Date	Declination (°)	Dip Angle (°)	Field Strength (nT)
	HDGM	9/8/2017	8.55	67.28	52,814

Design	Plan #2 (10-11-17)			
Audit Notes:				
Version:	Phase:	PROTOTYPE	Tie On Depth:	0.0
Vertical Section:	Depth From (TVD) (ft)	+N/-S (ft)	+E/-W (ft)	Direction (°)
	0.0	0.0	0.0	176.65

Plan Sections										
Measured Depth (ft)	Inclination (°)	Azimuth (°)	Vertical Depth (ft)	+N/-S (ft)	+E/-W (ft)	Dogleg Rate (°/100usft)	Build Rate (°/100usft)	Turn Rate (°/100usft)	TFO (°)	Target
0.0	0.00	0.00	0.0	0.0	0.0	0.00	0.00	0.00	0.00	
400.0	0.00	0.00	400.0	0.0	0.0	0.00	0.00	0.00	0.00	
823.1	6.35	22.42	822.2	21.6	8.9	1.50	1.50	0.00	22.42	
3,701.9	6.35	22.42	3,683.3	315.8	130.3	0.00	0.00	0.00	0.00	
4,019.2	0.00	0.00	4,000.0	332.0	137.0	2.00	-2.00	0.00	180.00	
7,175.4	0.00	0.00	7,156.2	332.0	137.0	0.00	0.00	0.00	0.00	
8,295.4	89.65	174.67	7,871.0	-375.4	203.0	8.00	8.00	0.00	174.67	
8,296.4	89.65	174.67	7,871.0	-376.4	203.1	0.00	0.00	0.00	0.00	LPL 735'FNL & 440'FI
8,297.3	89.65	174.66	7,871.0	-377.3	203.2	1.00	-0.19	-0.98	-100.86	
13,020.3	89.65	174.66	7,900.0	-5,079.7	642.5	0.00	0.00	0.00	0.00	WP (501-1015H)
13,325.3	89.65	180.76	7,901.9	-5,384.3	654.6	2.00	0.00	2.00	90.04	
18,043.6	89.65	180.76	7,931.0	-10,102.2	591.7	0.00	0.00	0.00	0.00	BHL 300'FSL & 440'F

Database:	US_EDM	Local Co-ordinate Reference:	Well Salt Ranch Fee 501-1015H
Company:	Clear Creek Resource Partners	TVD Reference:	WELL @ 5456.0ft (Original Well Elev)
Project:	SEC.10-T11N-R64W	MD Reference:	WELL @ 5456.0ft (Original Well Elev)
Site:	Salt Ranch East 10 Pad Sec.10-T11N-R64W	North Reference:	True
Well:	Salt Ranch Fee 501-1015H	Survey Calculation Method:	Minimum Curvature
Wellbore:	Wellbore #1		
Design:	Plan #2 (10-11-17)		

Planned Survey									
Measured Depth (ft)	Inclination (°)	Azimuth (°)	Vertical Depth (ft)	+N/-S (ft)	+E/-W (ft)	Vertical Section (ft)	Dogleg Rate (°/100usft)	Build Rate (°/100usft)	Turn Rate (°/100usft)
0.0	0.00	0.00	0.0	0.0	0.0	0.0	0.00	0.00	0.00
1.0	0.00	0.00	1.0	0.0	0.0	0.0	0.00	0.00	0.00
SHL 357°FNL & 607°FEL, Sec.10									
100.0	0.00	0.00	100.0	0.0	0.0	0.0	0.00	0.00	0.00
200.0	0.00	0.00	200.0	0.0	0.0	0.0	0.00	0.00	0.00
300.0	0.00	0.00	300.0	0.0	0.0	0.0	0.00	0.00	0.00
400.0	0.00	0.00	400.0	0.0	0.0	0.0	0.00	0.00	0.00
KOP - Start Build 1.50									
500.0	1.50	22.42	500.0	1.2	0.5	-1.2	1.50	1.50	0.00
600.0	3.00	22.42	599.9	4.8	2.0	-4.7	1.50	1.50	0.00
700.0	4.50	22.42	699.7	10.9	4.5	-10.6	1.50	1.50	0.00
800.0	6.00	22.42	799.3	19.3	8.0	-18.8	1.50	1.50	0.00
823.1	6.35	22.42	822.2	21.6	8.9	-21.1	1.50	1.50	0.00
900.0	6.35	22.42	898.7	29.5	12.2	-28.7	0.00	0.00	0.00
1,000.0	6.35	22.42	998.1	39.7	16.4	-38.7	0.00	0.00	0.00
1,100.0	6.35	22.42	1,097.4	49.9	20.6	-48.6	0.00	0.00	0.00
1,200.0	6.35	22.42	1,196.8	60.1	24.8	-58.6	0.00	0.00	0.00
1,300.0	6.35	22.42	1,296.2	70.4	29.0	-68.5	0.00	0.00	0.00
1,400.0	6.35	22.42	1,395.6	80.6	33.3	-78.5	0.00	0.00	0.00
1,500.0	6.35	22.42	1,495.0	90.8	37.5	-88.5	0.00	0.00	0.00
1,600.0	6.35	22.42	1,594.4	101.0	41.7	-98.4	0.00	0.00	0.00
1,700.0	6.35	22.42	1,693.8	111.2	45.9	-108.4	0.00	0.00	0.00
1,800.0	6.35	22.42	1,793.1	121.5	50.1	-118.3	0.00	0.00	0.00
1,900.0	6.35	22.42	1,892.5	131.7	54.3	-128.3	0.00	0.00	0.00
2,000.0	6.35	22.42	1,991.9	141.9	58.6	-138.2	0.00	0.00	0.00
2,100.0	6.35	22.42	2,091.3	152.1	62.8	-148.2	0.00	0.00	0.00
2,200.0	6.35	22.42	2,190.7	162.3	67.0	-158.1	0.00	0.00	0.00
2,300.0	6.35	22.42	2,290.1	172.5	71.2	-168.1	0.00	0.00	0.00
2,400.0	6.35	22.42	2,389.5	182.8	75.4	-178.0	0.00	0.00	0.00
2,500.0	6.35	22.42	2,488.9	193.0	79.6	-188.0	0.00	0.00	0.00
2,600.0	6.35	22.42	2,588.2	203.2	83.8	-197.9	0.00	0.00	0.00
2,700.0	6.35	22.42	2,687.6	213.4	88.1	-207.9	0.00	0.00	0.00
2,800.0	6.35	22.42	2,787.0	223.6	92.3	-217.8	0.00	0.00	0.00
2,900.0	6.35	22.42	2,886.4	233.8	96.5	-227.8	0.00	0.00	0.00
3,000.0	6.35	22.42	2,985.8	244.1	100.7	-237.8	0.00	0.00	0.00
3,100.0	6.35	22.42	3,085.2	254.3	104.9	-247.7	0.00	0.00	0.00
3,200.0	6.35	22.42	3,184.6	264.5	109.1	-257.7	0.00	0.00	0.00
3,300.0	6.35	22.42	3,284.0	274.7	113.4	-267.6	0.00	0.00	0.00
3,400.0	6.35	22.42	3,383.3	284.9	117.6	-277.6	0.00	0.00	0.00
3,500.0	6.35	22.42	3,482.7	295.1	121.8	-287.5	0.00	0.00	0.00
3,600.0	6.35	22.42	3,582.1	305.4	126.0	-297.5	0.00	0.00	0.00
3,700.0	6.35	22.42	3,681.5	315.6	130.2	-307.4	0.00	0.00	0.00
3,701.9	6.35	22.42	3,683.4	315.8	130.3	-307.6	0.00	0.00	0.00
Start Drop -2.00									
3,800.0	4.38	22.42	3,781.1	324.3	133.8	-315.9	2.00	-2.00	0.00
3,900.0	2.38	22.42	3,880.9	329.7	136.1	-321.2	2.00	-2.00	0.00
4,000.0	0.38	22.42	3,980.8	331.9	137.0	-323.4	2.00	-2.00	0.00
4,019.2	0.00	0.00	4,000.0	332.0	137.0	-323.4	2.00	-2.00	0.00
4,100.0	0.00	0.00	4,080.8	332.0	137.0	-323.4	0.00	0.00	0.00
4,200.0	0.00	0.00	4,180.8	332.0	137.0	-323.4	0.00	0.00	0.00
4,300.0	0.00	0.00	4,280.8	332.0	137.0	-323.4	0.00	0.00	0.00
4,400.0	0.00	0.00	4,380.8	332.0	137.0	-323.4	0.00	0.00	0.00
4,500.0	0.00	0.00	4,480.8	332.0	137.0	-323.4	0.00	0.00	0.00

Database:	US_EDM	Local Co-ordinate Reference:	Well Salt Ranch Fee 501-1015H
Company:	Clear Creek Resource Partners	TVD Reference:	WELL @ 5456.0ft (Original Well Elev)
Project:	SEC.10-T11N-R64W	MD Reference:	WELL @ 5456.0ft (Original Well Elev)
Site:	Salt Ranch East 10 Pad Sec.10-T11N-R64W	North Reference:	True
Well:	Salt Ranch Fee 501-1015H	Survey Calculation Method:	Minimum Curvature
Wellbore:	Wellbore #1		
Design:	Plan #2 (10-11-17)		

Planned Survey									
Measured Depth (ft)	Inclination (°)	Azimuth (°)	Vertical Depth (ft)	+N/-S (ft)	+E/-W (ft)	Vertical Section (ft)	Dogleg Rate (°/100usft)	Build Rate (°/100usft)	Turn Rate (°/100usft)
4,600.0	0.00	0.00	4,580.8	332.0	137.0	-323.4	0.00	0.00	0.00
4,700.0	0.00	0.00	4,680.8	332.0	137.0	-323.4	0.00	0.00	0.00
4,800.0	0.00	0.00	4,780.8	332.0	137.0	-323.4	0.00	0.00	0.00
4,900.0	0.00	0.00	4,880.8	332.0	137.0	-323.4	0.00	0.00	0.00
5,000.0	0.00	0.00	4,980.8	332.0	137.0	-323.4	0.00	0.00	0.00
5,100.0	0.00	0.00	5,080.8	332.0	137.0	-323.4	0.00	0.00	0.00
5,200.0	0.00	0.00	5,180.8	332.0	137.0	-323.4	0.00	0.00	0.00
5,300.0	0.00	0.00	5,280.8	332.0	137.0	-323.4	0.00	0.00	0.00
5,400.0	0.00	0.00	5,380.8	332.0	137.0	-323.4	0.00	0.00	0.00
5,500.0	0.00	0.00	5,480.8	332.0	137.0	-323.4	0.00	0.00	0.00
5,600.0	0.00	0.00	5,580.8	332.0	137.0	-323.4	0.00	0.00	0.00
5,700.0	0.00	0.00	5,680.8	332.0	137.0	-323.4	0.00	0.00	0.00
5,800.0	0.00	0.00	5,780.8	332.0	137.0	-323.4	0.00	0.00	0.00
5,900.0	0.00	0.00	5,880.8	332.0	137.0	-323.4	0.00	0.00	0.00
6,000.0	0.00	0.00	5,980.8	332.0	137.0	-323.4	0.00	0.00	0.00
6,100.0	0.00	0.00	6,080.8	332.0	137.0	-323.4	0.00	0.00	0.00
6,200.0	0.00	0.00	6,180.8	332.0	137.0	-323.4	0.00	0.00	0.00
6,300.0	0.00	0.00	6,280.8	332.0	137.0	-323.4	0.00	0.00	0.00
6,400.0	0.00	0.00	6,380.8	332.0	137.0	-323.4	0.00	0.00	0.00
6,500.0	0.00	0.00	6,480.8	332.0	137.0	-323.4	0.00	0.00	0.00
6,600.0	0.00	0.00	6,580.8	332.0	137.0	-323.4	0.00	0.00	0.00
6,700.0	0.00	0.00	6,680.8	332.0	137.0	-323.4	0.00	0.00	0.00
6,800.0	0.00	0.00	6,780.8	332.0	137.0	-323.4	0.00	0.00	0.00
6,900.0	0.00	0.00	6,880.8	332.0	137.0	-323.4	0.00	0.00	0.00
7,000.0	0.00	0.00	6,980.8	332.0	137.0	-323.4	0.00	0.00	0.00
7,100.0	0.00	0.00	7,080.8	332.0	137.0	-323.4	0.00	0.00	0.00
7,175.4	0.00	0.00	7,156.2	332.0	137.0	-323.4	0.00	0.00	0.00
KOP #2 - Start Build 8.00									
7,200.0	1.97	174.67	7,180.8	331.6	137.0	-323.0	8.02	8.02	0.00
7,300.0	9.98	174.67	7,280.2	321.2	138.0	-312.6	8.00	8.00	0.00
7,400.0	17.98	174.67	7,377.2	297.2	140.2	-288.5	8.00	8.00	0.00
7,500.0	25.99	174.67	7,469.8	259.9	143.7	-251.1	8.00	8.00	0.00
7,600.0	33.99	174.67	7,556.4	210.2	148.4	-201.2	8.00	8.00	0.00
7,700.0	41.99	174.67	7,635.1	149.0	154.1	-139.7	8.00	8.00	0.00
7,800.0	50.00	174.67	7,704.5	77.4	160.7	-67.9	8.00	8.00	0.00
7,900.0	58.00	174.67	7,763.3	-3.1	168.2	12.9	8.00	8.00	0.00
8,000.0	66.01	174.67	7,810.2	-90.9	176.4	101.1	8.00	8.00	0.00
8,100.0	74.01	174.67	7,844.3	-184.4	185.2	194.9	8.00	8.00	0.00
8,200.0	82.02	174.67	7,865.1	-281.7	194.2	292.6	8.00	8.00	0.00
8,295.4	89.65	174.67	7,871.0	-375.4	203.0	386.6	8.00	8.00	0.00
8,296.4	89.65	174.67	7,871.0	-376.4	203.1	387.6	0.00	0.00	0.00
Start DLS 1.00 TFO -100.86 - LPL 735°FNL & 440°FEL, Sec.10									
8,297.3	89.65	174.66	7,871.0	-377.3	203.2	388.5	1.00	-0.19	-0.98
8,300.0	89.65	174.66	7,871.0	-380.0	203.4	391.2	0.00	0.00	0.00
8,400.0	89.65	174.66	7,871.6	-479.5	212.7	491.2	0.00	0.00	0.00
8,500.0	89.65	174.66	7,872.2	-579.1	222.0	591.1	0.00	0.00	0.00
8,600.0	89.65	174.66	7,872.9	-678.7	231.3	691.0	0.00	0.00	0.00
8,700.0	89.65	174.66	7,873.5	-778.2	240.6	791.0	0.00	0.00	0.00
8,800.0	89.65	174.66	7,874.1	-877.8	249.9	890.9	0.00	0.00	0.00
8,900.0	89.65	174.66	7,874.7	-977.4	259.2	990.8	0.00	0.00	0.00
9,000.0	89.65	174.66	7,875.3	-1,076.9	268.5	1,090.8	0.00	0.00	0.00
9,100.0	89.65	174.66	7,875.9	-1,176.5	277.8	1,190.7	0.00	0.00	0.00
9,200.0	89.65	174.66	7,876.5	-1,276.1	287.1	1,290.7	0.00	0.00	0.00
9,300.0	89.65	174.66	7,877.2	-1,375.6	296.4	1,390.6	0.00	0.00	0.00

Database:	US_EDM	Local Co-ordinate Reference:	Well Salt Ranch Fee 501-1015H
Company:	Clear Creek Resource Partners	TVD Reference:	WELL @ 5456.0ft (Original Well Elev)
Project:	SEC.10-T11N-R64W	MD Reference:	WELL @ 5456.0ft (Original Well Elev)
Site:	Salt Ranch East 10 Pad Sec.10-T11N-R64W	North Reference:	True
Well:	Salt Ranch Fee 501-1015H	Survey Calculation Method:	Minimum Curvature
Wellbore:	Wellbore #1		
Design:	Plan #2 (10-11-17)		

Planned Survey									
Measured Depth (ft)	Inclination (°)	Azimuth (°)	Vertical Depth (ft)	+N/-S (ft)	+E/-W (ft)	Vertical Section (ft)	Dogleg Rate (°/100usft)	Build Rate (°/100usft)	Turn Rate (°/100usft)
9,400.0	89.65	174.66	7,877.8	-1,475.2	305.7	1,490.5	0.00	0.00	0.00
9,500.0	89.65	174.66	7,878.4	-1,574.7	315.0	1,590.5	0.00	0.00	0.00
9,600.0	89.65	174.66	7,879.0	-1,674.3	324.3	1,690.4	0.00	0.00	0.00
9,700.0	89.65	174.66	7,879.6	-1,773.9	333.6	1,790.3	0.00	0.00	0.00
9,800.0	89.65	174.66	7,880.2	-1,873.4	342.9	1,890.3	0.00	0.00	0.00
9,900.0	89.65	174.66	7,880.8	-1,973.0	352.2	1,990.2	0.00	0.00	0.00
10,000.0	89.65	174.66	7,881.5	-2,072.6	361.5	2,090.2	0.00	0.00	0.00
10,100.0	89.65	174.66	7,882.1	-2,172.1	370.8	2,190.1	0.00	0.00	0.00
10,200.0	89.65	174.66	7,882.7	-2,271.7	380.1	2,290.0	0.00	0.00	0.00
10,300.0	89.65	174.66	7,883.3	-2,371.3	389.4	2,390.0	0.00	0.00	0.00
10,400.0	89.65	174.66	7,883.9	-2,470.8	398.7	2,489.9	0.00	0.00	0.00
10,500.0	89.65	174.66	7,884.5	-2,570.4	408.0	2,589.9	0.00	0.00	0.00
10,600.0	89.65	174.66	7,885.1	-2,670.0	417.3	2,689.8	0.00	0.00	0.00
10,700.0	89.65	174.66	7,885.8	-2,769.5	426.6	2,789.7	0.00	0.00	0.00
10,800.0	89.65	174.66	7,886.4	-2,869.1	435.9	2,889.7	0.00	0.00	0.00
10,900.0	89.65	174.66	7,887.0	-2,968.7	445.2	2,989.6	0.00	0.00	0.00
11,000.0	89.65	174.66	7,887.6	-3,068.2	454.6	3,089.5	0.00	0.00	0.00
11,100.0	89.65	174.66	7,888.2	-3,167.8	463.9	3,189.5	0.00	0.00	0.00
11,200.0	89.65	174.66	7,888.8	-3,267.3	473.2	3,289.4	0.00	0.00	0.00
11,300.0	89.65	174.66	7,889.4	-3,366.9	482.5	3,389.4	0.00	0.00	0.00
11,400.0	89.65	174.66	7,890.1	-3,466.5	491.8	3,489.3	0.00	0.00	0.00
11,500.0	89.65	174.66	7,890.7	-3,566.0	501.1	3,589.2	0.00	0.00	0.00
11,600.0	89.65	174.66	7,891.3	-3,665.6	510.4	3,689.2	0.00	0.00	0.00
11,700.0	89.65	174.66	7,891.9	-3,765.2	519.7	3,789.1	0.00	0.00	0.00
11,800.0	89.65	174.66	7,892.5	-3,864.7	529.0	3,889.0	0.00	0.00	0.00
11,900.0	89.65	174.66	7,893.1	-3,964.3	538.3	3,989.0	0.00	0.00	0.00
12,000.0	89.65	174.66	7,893.7	-4,063.9	547.6	4,088.9	0.00	0.00	0.00
12,100.0	89.65	174.66	7,894.4	-4,163.4	556.9	4,188.9	0.00	0.00	0.00
12,200.0	89.65	174.66	7,895.0	-4,263.0	566.2	4,288.8	0.00	0.00	0.00
12,300.0	89.65	174.66	7,895.6	-4,362.6	575.5	4,388.7	0.00	0.00	0.00
12,400.0	89.65	174.66	7,896.2	-4,462.1	584.8	4,488.7	0.00	0.00	0.00
12,500.0	89.65	174.66	7,896.8	-4,561.7	594.1	4,588.6	0.00	0.00	0.00
12,600.0	89.65	174.66	7,897.4	-4,661.2	603.4	4,688.6	0.00	0.00	0.00
12,700.0	89.65	174.66	7,898.0	-4,760.8	612.7	4,788.5	0.00	0.00	0.00
12,800.0	89.65	174.66	7,898.6	-4,860.4	622.0	4,888.4	0.00	0.00	0.00
12,900.0	89.65	174.66	7,899.3	-4,959.9	631.3	4,988.4	0.00	0.00	0.00
13,000.0	89.65	174.66	7,899.9	-5,059.5	640.6	5,088.3	0.00	0.00	0.00
13,020.3	89.65	174.66	7,900.0	-5,079.7	642.5	5,108.6	0.00	0.00	0.00
Start DLS 2.00 TFO 90.04 - WP (501-1015H)									
13,100.0	89.65	176.26	7,900.5	-5,159.2	648.8	5,188.3	2.00	0.00	2.00
13,200.0	89.65	178.26	7,901.1	-5,259.0	653.6	5,288.3	2.00	0.00	2.00
13,300.0	89.65	180.26	7,901.7	-5,359.0	654.9	5,388.1	2.00	0.00	2.00
13,325.3	89.65	180.76	7,901.9	-5,384.3	654.6	5,413.4	2.00	0.00	2.00
13,400.0	89.65	180.76	7,902.3	-5,459.0	653.6	5,487.9	0.00	0.00	0.00
13,500.0	89.65	180.76	7,903.0	-5,559.0	652.3	5,587.6	0.00	0.00	0.00
13,600.0	89.65	180.76	7,903.6	-5,659.0	651.0	5,687.4	0.00	0.00	0.00
13,700.0	89.65	180.76	7,904.2	-5,759.0	649.6	5,787.1	0.00	0.00	0.00
13,800.0	89.65	180.76	7,904.8	-5,859.0	648.3	5,886.9	0.00	0.00	0.00
13,900.0	89.65	180.76	7,905.4	-5,959.0	647.0	5,986.6	0.00	0.00	0.00
14,000.0	89.65	180.76	7,906.0	-6,059.0	645.6	6,086.3	0.00	0.00	0.00
14,100.0	89.65	180.76	7,906.7	-6,158.9	644.3	6,186.1	0.00	0.00	0.00
14,200.0	89.65	180.76	7,907.3	-6,258.9	643.0	6,285.8	0.00	0.00	0.00
14,300.0	89.65	180.76	7,907.9	-6,358.9	641.6	6,385.6	0.00	0.00	0.00
14,400.0	89.65	180.76	7,908.5	-6,458.9	640.3	6,485.3	0.00	0.00	0.00

Database:	US_EDM	Local Co-ordinate Reference:	Well Salt Ranch Fee 501-1015H
Company:	Clear Creek Resource Partners	TVD Reference:	WELL @ 5456.0ft (Original Well Elev)
Project:	SEC.10-T11N-R64W	MD Reference:	WELL @ 5456.0ft (Original Well Elev)
Site:	Salt Ranch East 10 Pad Sec.10-T11N-R64W	North Reference:	True
Well:	Salt Ranch Fee 501-1015H	Survey Calculation Method:	Minimum Curvature
Wellbore:	Wellbore #1		
Design:	Plan #2 (10-11-17)		

Planned Survey									
Measured Depth (ft)	Inclination (°)	Azimuth (°)	Vertical Depth (ft)	+N/-S (ft)	+E/-W (ft)	Vertical Section (ft)	Dogleg Rate (°/100usft)	Build Rate (°/100usft)	Turn Rate (°/100usft)
14,500.0	89.65	180.76	7,909.1	-6,558.9	639.0	6,585.0	0.00	0.00	0.00
14,600.0	89.65	180.76	7,909.7	-6,658.9	637.6	6,684.8	0.00	0.00	0.00
14,700.0	89.65	180.76	7,910.4	-6,758.9	636.3	6,784.5	0.00	0.00	0.00
14,800.0	89.65	180.76	7,911.0	-6,858.9	635.0	6,884.3	0.00	0.00	0.00
14,900.0	89.65	180.76	7,911.6	-6,958.9	633.7	6,984.0	0.00	0.00	0.00
15,000.0	89.65	180.76	7,912.2	-7,058.8	632.3	7,083.7	0.00	0.00	0.00
15,100.0	89.65	180.76	7,912.8	-7,158.8	631.0	7,183.5	0.00	0.00	0.00
15,200.0	89.65	180.76	7,913.4	-7,258.8	629.7	7,283.2	0.00	0.00	0.00
15,300.0	89.65	180.76	7,914.1	-7,358.8	628.3	7,383.0	0.00	0.00	0.00
15,400.0	89.65	180.76	7,914.7	-7,458.8	627.0	7,482.7	0.00	0.00	0.00
15,500.0	89.65	180.76	7,915.3	-7,558.8	625.7	7,582.4	0.00	0.00	0.00
15,600.0	89.65	180.76	7,915.9	-7,658.8	624.3	7,682.2	0.00	0.00	0.00
15,700.0	89.65	180.76	7,916.5	-7,758.8	623.0	7,781.9	0.00	0.00	0.00
15,800.0	89.65	180.76	7,917.2	-7,858.8	621.7	7,881.7	0.00	0.00	0.00
15,900.0	89.65	180.76	7,917.8	-7,958.7	620.3	7,981.4	0.00	0.00	0.00
16,000.0	89.65	180.76	7,918.4	-8,058.7	619.0	8,081.1	0.00	0.00	0.00
16,100.0	89.65	180.76	7,919.0	-8,158.7	617.7	8,180.9	0.00	0.00	0.00
16,200.0	89.65	180.76	7,919.6	-8,258.7	616.3	8,280.6	0.00	0.00	0.00
16,300.0	89.65	180.76	7,920.2	-8,358.7	615.0	8,380.4	0.00	0.00	0.00
16,400.0	89.65	180.76	7,920.9	-8,458.7	613.7	8,480.1	0.00	0.00	0.00
16,500.0	89.65	180.76	7,921.5	-8,558.7	612.3	8,579.8	0.00	0.00	0.00
16,600.0	89.65	180.76	7,922.1	-8,658.7	611.0	8,679.6	0.00	0.00	0.00
16,700.0	89.65	180.76	7,922.7	-8,758.7	609.7	8,779.3	0.00	0.00	0.00
16,800.0	89.65	180.76	7,923.3	-8,858.6	608.3	8,879.1	0.00	0.00	0.00
16,900.0	89.65	180.76	7,923.9	-8,958.6	607.0	8,978.8	0.00	0.00	0.00
17,000.0	89.65	180.76	7,924.6	-9,058.6	605.7	9,078.5	0.00	0.00	0.00
17,100.0	89.65	180.76	7,925.2	-9,158.6	604.3	9,178.3	0.00	0.00	0.00
17,200.0	89.65	180.76	7,925.8	-9,258.6	603.0	9,278.0	0.00	0.00	0.00
17,300.0	89.65	180.76	7,926.4	-9,358.6	601.7	9,377.8	0.00	0.00	0.00
17,400.0	89.65	180.76	7,927.0	-9,458.6	600.3	9,477.5	0.00	0.00	0.00
17,500.0	89.65	180.76	7,927.6	-9,558.6	599.0	9,577.2	0.00	0.00	0.00
17,600.0	89.65	180.76	7,928.3	-9,658.6	597.7	9,677.0	0.00	0.00	0.00
17,700.0	89.65	180.76	7,928.9	-9,758.6	596.3	9,776.7	0.00	0.00	0.00
17,800.0	89.65	180.76	7,929.5	-9,858.5	595.0	9,876.5	0.00	0.00	0.00
17,900.0	89.65	180.76	7,930.1	-9,958.5	593.7	9,976.2	0.00	0.00	0.00
18,000.0	89.65	180.76	7,930.7	-10,058.5	592.3	10,075.9	0.00	0.00	0.00
18,043.6	89.65	180.76	7,931.0	-10,102.1	591.7	10,119.4	0.00	0.00	0.00
TD at 18043.6 - BHL 300°FSL & 440°FEL, Sec.15									

Database:	US_EDM	Local Co-ordinate Reference:	Well Salt Ranch Fee 501-1015H
Company:	Clear Creek Resource Partners	TVD Reference:	WELL @ 5456.0ft (Original Well Elev)
Project:	SEC.10-T11N-R64W	MD Reference:	WELL @ 5456.0ft (Original Well Elev)
Site:	Salt Ranch East 10 Pad Sec.10-T11N-R64W	North Reference:	True
Well:	Salt Ranch Fee 501-1015H	Survey Calculation Method:	Minimum Curvature
Wellbore:	Wellbore #1		
Design:	Plan #2 (10-11-17)		

Design Targets									
Target Name	Dip Angle	Dip Dir.	TVD	+N/-S	+E/-W	Northing	Easting	Latitude	Longitude
- hit/miss target	(°)	(°)	(ft)	(ft)	(ft)	(usft)	(usft)		
- Shape									
SHL 357'FNL & 607'FEL - plan hits target center - Point	0.00	0.00	1.0	0.0	0.0	1,587,572.05	3,269,150.07	40.942191	-104.525797
LPL 735'FNL & 440'FEL - plan hits target center - Point	0.00	0.00	7,871.0	-376.4	203.1	1,587,197.92	3,269,357.26	40.941158	-104.525062
WP (501-1015H) - plan hits target center - Point	0.00	0.00	7,900.0	-5,079.7	642.5	1,582,499.57	3,269,848.33	40.928249	-104.523472
BHL 300'FSL & 440'FEL - plan hits target center - Point	0.00	0.00	7,931.0	-10,102.2	591.7	1,577,476.70	3,269,852.78	40.914464	-104.523656

Plan Annotations					
Measured Depth	Vertical Depth	Local Coordinates			
(ft)	(ft)	+N/-S	+E/-W	Comment	
		(ft)	(ft)		
400.0	400.0	0.0	0.0	KOP - Start Build 1.50	
3,701.9	3,683.4	315.8	130.3	Start Drop -2.00	
7,175.4	7,156.2	332.0	137.0	KOP #2 - Start Build 8.00	
8,296.4	7,871.0	-376.4	203.1	Start DLS 1.00 TFO -100.86	
13,020.3	7,900.0	-5,079.7	642.5	Start DLS 2.00 TFO 90.04	
18,043.6	7,931.0	-10,102.1	591.7	TD at 18043.6	



Clear Creek Resource Partners

SEC.10-T11N-R64W

Salt Ranch East 10 Pad Sec.10-T11N-R64W

Salt Ranch Fee 501-1015H

Wellbore #1

Plan #2 (10-11-17)

Anticollision Report

11 October, 2017

Company:	Clear Creek Resource Partners	Local Co-ordinate Reference:	Well Salt Ranch Fee 501-1015H
Project:	SEC.10-T11N-R64W	TVD Reference:	WELL @ 5456.0ft (Original Well Elev)
Reference Site:	Salt Ranch East 10 Pad Sec.10-T11N-R64W	MD Reference:	WELL @ 5456.0ft (Original Well Elev)
Site Error:	0.0 ft	North Reference:	True
Reference Well:	Salt Ranch Fee 501-1015H	Survey Calculation Method:	Minimum Curvature
Well Error:	0.0 ft	Output errors are at	2.00 sigma
Reference Wellbore	Wellbore #1	Database:	US_EDM
Reference Design:	Plan #2 (10-11-17)	Offset TVD Reference:	Offset Datum

Reference	Plan #2 (10-11-17)		
Filter type:	NO GLOBAL FILTER: Using user defined selection & filtering criteria		
Interpolation Method:	MD Interval 100.0ft	Error Model:	ISCWSA
Depth Range:	Unlimited	Scan Method:	Closest Approach 3D
Results Limited by:	Maximum center-center distance of 500.0 ft	Error Surface:	Elliptical Conic
Warning Levels Evaluated at:	2.00 Sigma	Casing Method:	Not applied

Survey Tool Program		Date	10/11/2017		
From (ft)	To (ft)	Survey (Wellbore)	Tool Name	Description	
0.0	18,043.6	Plan #2 (10-11-17) (Wellbore #1)	MWD	MWD - Standard	

Summary						
Site Name Offset Well - Wellbore - Design	Reference	Offset	Distance		Separation Factor	Warning
	Measured	Measured	Between	Between		
	Depth	Depth	Centres	Ellipses		
	(ft)	(ft)	(ft)	(ft)		
Salt Ranch East 10 Pad Sec.10-T11N-R64W						
Salt Ranch Fee 201-1015H - Wellbore #1 - Plan #2 (10-1	200.0	200.0	29.8	29.2	44.253	CC
Salt Ranch Fee 201-1015H - Wellbore #1 - Plan #2 (10-1	18,043.6	17,840.3	228.5	18.5	1.088	Level 2, ES, SF
Salt Ranch Fee 202-1015H - Wellbore #1 - Plan #2 (10-1	400.0	400.0	30.1	28.5	19.141	CC, ES
Salt Ranch Fee 202-1015H - Wellbore #1 - Plan #2 (10-1	700.0	699.7	36.2	33.2	12.327	SF
Salt Ranch Fee 502-1015H - Wellbore #1 - Plan #2 (10-1	200.0	200.0	60.0	59.3	88.916	CC, ES
Salt Ranch Fee 502-1015H - Wellbore #1 - Plan #2 (10-1	700.0	690.0	93.6	90.6	31.835	SF

Offset Design		Salt Ranch East 10 Pad Sec.10-T11N-R64W - Salt Ranch Fee 201-1015H - Wellbore #1 - Plan #2 (10-1										Offset Site Error:		0.0 ft
Survey Program: 0-MWD												Offset Well Error:		0.0 ft
Reference		Offset		Semi Major Axis			Distance							
Measured Depth (ft)	Vertical Depth (ft)	Measured Depth (ft)	Vertical Depth (ft)	Reference (ft)	Offset (ft)	Highside Toolface (°)	Offset Wellbore Centre +N/-S (ft)	+E/-W (ft)	Between Centres (ft)	Between Ellipses (ft)	Minimum Separation (ft)	Separation Factor	Warning	
0.0	0.0	0.0	0.0	0.0	0.0	90.69	-0.4	29.8	29.8					
100.0	100.0	100.0	100.0	0.1	0.1	90.69	-0.4	29.8	29.8	29.6	0.22	132.760	CC	
200.0	200.0	200.0	200.0	0.3	0.3	90.69	-0.4	29.8	29.8	29.2	0.67	44.253		
300.0	300.0	299.6	299.6	0.6	0.6	88.58	0.8	30.5	30.5	29.4	1.12	27.192		
400.0	400.0	399.0	399.0	0.8	0.8	82.79	4.1	32.5	32.7	31.2	1.57	20.806		
500.0	500.0	498.3	498.0	1.0	1.0	54.03	9.7	35.8	36.3	34.3	2.03	17.912		
600.0	599.9	597.5	596.7	1.2	1.3	49.25	17.4	40.3	40.5	38.0	2.49	16.244		
700.0	699.7	697.1	695.7	1.5	1.6	46.18	27.0	46.0	44.7	41.7	2.97	15.035		
800.0	799.3	797.0	795.1	1.7	1.8	45.73	36.7	51.7	47.2	43.7	3.46	13.635		
900.0	898.7	897.0	894.4	2.0	2.1	46.90	46.4	57.4	48.4	44.5	3.97	12.217		
1,000.0	998.1	997.0	993.8	2.3	2.4	48.07	56.1	63.1	49.7	45.2	4.48	11.084		
1,100.0	1,097.4	1,097.0	1,093.1	2.5	2.7	49.18	65.7	68.8	50.9	45.9	5.01	10.169		
1,200.0	1,196.8	1,197.0	1,192.5	2.8	3.0	50.24	75.4	74.5	52.2	46.7	5.54	9.417		
1,300.0	1,296.2	1,297.0	1,291.8	3.1	3.3	51.25	85.1	80.3	53.5	47.4	6.09	8.790		
1,400.0	1,395.6	1,397.0	1,391.2	3.4	3.6	52.22	94.8	86.0	54.8	48.2	6.63	8.260		
1,500.0	1,495.0	1,496.9	1,490.5	3.7	3.9	53.13	104.5	91.7	56.1	48.9	7.19	7.808		
1,600.0	1,594.4	1,596.9	1,589.9	4.0	4.2	54.01	114.2	97.4	57.5	49.7	7.75	7.418		
1,700.0	1,693.8	1,696.9	1,689.2	4.3	4.5	54.84	123.9	103.1	58.8	50.5	8.31	7.078		
1,800.0	1,793.1	1,796.9	1,788.6	4.6	4.8	55.64	133.6	108.9	60.2	51.3	8.87	6.780		
1,900.0	1,892.5	1,896.9	1,887.9	4.9	5.1	56.40	143.3	114.6	61.5	52.1	9.44	6.516		
2,000.0	1,991.9	1,996.9	1,987.3	5.2	5.4	57.13	153.0	120.3	62.9	52.9	10.01	6.282		

Company:	Clear Creek Resource Partners	Local Co-ordinate Reference:	Well Salt Ranch Fee 501-1015H
Project:	SEC.10-T11N-R64W	TVD Reference:	WELL @ 5456.0ft (Original Well Elev)
Reference Site:	Salt Ranch East 10 Pad Sec.10-T11N-R64W	MD Reference:	WELL @ 5456.0ft (Original Well Elev)
Site Error:	0.0 ft	North Reference:	True
Reference Well:	Salt Ranch Fee 501-1015H	Survey Calculation Method:	Minimum Curvature
Well Error:	0.0 ft	Output errors are at	2.00 sigma
Reference Wellbore	Wellbore #1	Database:	US_EDM
Reference Design:	Plan #2 (10-11-17)	Offset TVD Reference:	Offset Datum

Offset Design				Salt Ranch East 10 Pad Sec.10-T11N-R64W - Salt Ranch Fee 201-1015H - Wellbore #1 - Plan #2 (10-1)									Offset Site Error:		0.0 ft
Survey Program: 0-MWD													Offset Well Error:		0.0 ft
Reference		Offset		Semi Major Axis			Distance							Warning	
Measured Depth	Vertical Depth	Measured Depth	Vertical Depth	Reference	Offset	Highside Toolface	Offset Wellbore Centre		Between Centres	Between Ellipses	Minimum Separation	Separation Factor			
(ft)	(ft)	(ft)	(ft)	(ft)	(ft)	(°)	+N/-S (ft)	+E/-W (ft)	(ft)	(ft)	(ft)				
2,100.0	2,091.3	2,096.9	2,086.6	5.5	5.7	57.83	162.7	126.0	64.3	53.7	10.59	6.072			
2,200.0	2,190.7	2,196.9	2,186.0	5.8	6.0	58.50	172.4	131.7	65.7	54.5	11.17	5.884			
2,300.0	2,290.1	2,296.8	2,285.3	6.1	6.3	59.14	182.1	137.5	67.1	55.4	11.75	5.713			
2,400.0	2,389.5	2,396.8	2,384.7	6.4	6.6	59.75	191.8	143.2	68.5	56.2	12.33	5.559			
2,500.0	2,488.9	2,496.8	2,484.0	6.7	6.9	60.34	201.5	148.9	69.9	57.0	12.91	5.418			
2,600.0	2,588.2	2,596.8	2,583.4	7.0	7.3	60.91	211.2	154.6	71.4	57.9	13.49	5.290			
2,700.0	2,687.6	2,696.8	2,682.7	7.3	7.6	61.45	220.9	160.3	72.8	58.7	14.08	5.171			
2,800.0	2,787.0	2,796.8	2,782.1	7.6	7.9	61.97	230.6	166.0	74.3	59.6	14.67	5.063			
2,900.0	2,886.4	2,896.8	2,881.4	7.9	8.2	62.47	240.3	171.8	75.7	60.4	15.26	4.962			
3,000.0	2,985.8	2,996.8	2,980.8	8.2	8.5	62.96	250.0	177.5	77.2	61.3	15.85	4.870			
3,100.0	3,085.2	3,096.7	3,080.2	8.5	8.8	63.42	259.7	183.2	78.6	62.2	16.44	4.783			
3,200.0	3,184.6	3,196.7	3,179.5	8.8	9.1	63.87	269.4	188.9	80.1	63.1	17.03	4.703			
3,300.0	3,284.0	3,296.7	3,278.9	9.1	9.4	64.30	279.1	194.6	81.6	63.9	17.62	4.628			
3,400.0	3,383.3	3,396.7	3,378.2	9.4	9.7	64.72	288.7	200.4	83.0	64.8	18.21	4.559			
3,500.0	3,482.7	3,496.7	3,477.6	9.7	10.0	65.12	298.4	206.1	84.5	65.7	18.81	4.493			
3,600.0	3,582.1	3,596.7	3,576.9	10.0	10.3	65.51	308.1	211.8	86.0	66.6	19.40	4.432			
3,700.0	3,681.5	3,696.7	3,676.3	10.3	10.6	65.88	317.8	217.5	87.5	67.5	20.00	4.374			
3,800.0	3,781.1	3,798.3	3,777.4	10.5	10.8	66.23	326.2	222.4	88.7	68.2	20.48	4.332			
3,900.0	3,880.9	3,900.0	3,878.9	10.7	11.0	66.44	331.4	225.5	89.5	68.6	20.87	4.288			
4,000.0	3,980.8	4,001.6	3,980.5	10.9	11.2	66.53	333.6	226.8	89.8	68.6	21.20	4.237			
4,100.0	4,080.8	4,101.9	4,080.8	11.0	11.3	88.95	333.6	226.8	89.9	68.1	21.79	4.124			
4,200.0	4,180.8	4,201.9	4,180.8	11.2	11.5	88.95	333.6	226.8	89.9	67.7	22.14	4.058			
4,300.0	4,280.8	4,301.9	4,280.8	11.4	11.7	88.95	333.6	226.8	89.9	67.4	22.50	3.993			
4,400.0	4,380.8	4,401.9	4,380.8	11.6	11.9	88.95	333.6	226.8	89.9	67.0	22.86	3.930			
4,500.0	4,480.8	4,501.9	4,480.8	11.7	12.0	88.95	333.6	226.8	89.9	66.6	23.23	3.868			
4,600.0	4,580.8	4,601.9	4,580.8	11.9	12.2	88.95	333.6	226.8	89.9	66.3	23.59	3.808			
4,700.0	4,680.8	4,701.9	4,680.8	12.1	12.4	88.95	333.6	226.8	89.9	65.9	23.96	3.749			
4,800.0	4,780.8	4,801.9	4,780.8	12.3	12.6	88.95	333.6	226.8	89.9	65.5	24.34	3.692			
4,900.0	4,880.8	4,901.9	4,880.8	12.5	12.8	88.95	333.6	226.8	89.9	65.1	24.71	3.636			
5,000.0	4,980.8	5,001.9	4,980.8	12.7	12.9	88.95	333.6	226.8	89.9	64.8	25.09	3.581			
5,100.0	5,080.8	5,101.9	5,080.8	12.9	13.1	88.95	333.6	226.8	89.9	64.4	25.47	3.528			
5,200.0	5,180.8	5,201.9	5,180.8	13.0	13.3	88.95	333.6	226.8	89.9	64.0	25.85	3.476			
5,300.0	5,280.8	5,301.9	5,280.8	13.2	13.5	88.95	333.6	226.8	89.9	63.6	26.24	3.425			
5,400.0	5,380.8	5,401.9	5,380.8	13.4	13.7	88.95	333.6	226.8	89.9	63.2	26.62	3.375			
5,500.0	5,480.8	5,501.9	5,480.8	13.6	13.9	88.95	333.6	226.8	89.9	62.8	27.01	3.326			
5,600.0	5,580.8	5,601.9	5,580.8	13.8	14.1	88.95	333.6	226.8	89.9	62.4	27.40	3.279			
5,700.0	5,680.8	5,701.9	5,680.8	14.0	14.3	88.95	333.6	226.8	89.9	62.1	27.79	3.233			
5,800.0	5,780.8	5,801.9	5,780.8	14.2	14.4	88.95	333.6	226.8	89.9	61.7	28.19	3.188			
5,900.0	5,880.8	5,901.9	5,880.8	14.4	14.6	88.95	333.6	226.8	89.9	61.3	28.58	3.143			
6,000.0	5,980.8	6,001.9	5,980.8	14.6	14.8	88.95	333.6	226.8	89.9	60.9	28.98	3.100			
6,100.0	6,080.8	6,101.9	6,080.8	14.8	15.0	88.95	333.6	226.8	89.9	60.5	29.38	3.058			
6,200.0	6,180.8	6,201.9	6,180.8	15.0	15.2	88.95	333.6	226.8	89.9	60.1	29.78	3.017			
6,300.0	6,280.8	6,301.9	6,280.8	15.2	15.4	88.95	333.6	226.8	89.9	59.7	30.18	2.977			
6,400.0	6,380.8	6,401.9	6,380.8	15.4	15.6	88.95	333.6	226.8	89.9	59.3	30.58	2.938			
6,500.0	6,480.8	6,501.9	6,480.8	15.6	15.8	88.95	333.6	226.8	89.9	58.9	30.99	2.900			
6,600.0	6,580.8	6,601.9	6,580.8	15.8	16.0	88.95	333.6	226.8	89.9	58.5	31.39	2.862			
6,700.0	6,680.8	6,701.9	6,680.8	16.0	16.2	88.95	333.6	226.8	89.9	58.1	31.80	2.826			
6,800.0	6,780.8	6,801.9	6,780.8	16.2	16.4	88.95	333.6	226.8	89.9	57.6	32.21	2.790			
6,900.0	6,880.8	6,901.9	6,880.8	16.4	16.6	88.95	333.6	226.8	89.9	57.2	32.62	2.755			
6,952.6	6,933.5	6,954.5	6,933.5	16.5	16.7	88.95	333.6	226.8	89.9	57.0	32.83	2.737			
7,000.0	6,980.8	7,001.6	6,980.5	16.6	16.8	89.37	333.0	226.9	89.9	56.9	33.03	2.722			
7,100.0	7,080.8	7,099.3	7,077.5	16.8	16.9	96.15	322.2	227.9	91.5	58.0	33.51	2.731			

CC - Min centre to center distance or convergent point, SF - min separation factor, ES - min ellipse separation

Company:	Clear Creek Resource Partners	Local Co-ordinate Reference:	Well Salt Ranch Fee 501-1015H
Project:	SEC.10-T11N-R64W	TVD Reference:	WELL @ 5456.0ft (Original Well Elev)
Reference Site:	Salt Ranch East 10 Pad Sec.10-T11N-R64W	MD Reference:	WELL @ 5456.0ft (Original Well Elev)
Site Error:	0.0 ft	North Reference:	True
Reference Well:	Salt Ranch Fee 501-1015H	Survey Calculation Method:	Minimum Curvature
Well Error:	0.0 ft	Output errors are at	2.00 sigma
Reference Wellbore	Wellbore #1	Database:	US_EDM
Reference Design:	Plan #2 (10-11-17)	Offset TVD Reference:	Offset Datum

Offset Design													Offset Site Error:	0.0 ft
Survey Program: 0-MWD													Offset Well Error:	0.0 ft
Reference		Offset		Semi Major Axis			Distance							Warning
Measured Depth (ft)	Vertical Depth (ft)	Measured Depth (ft)	Vertical Depth (ft)	Reference (ft)	Offset (ft)	Highside Toolface (°)	Offset Wellbore Centre +N/-S (ft)	+E/-W (ft)	Between Centres (ft)	Between Ellipses (ft)	Minimum Separation (ft)	Separation Factor		
7,200.0	7,180.8	7,192.6	7,167.9	17.0	16.9	-65.56	299.8	230.0	99.1	65.2	33.87	2.926		
7,300.0	7,280.2	7,282.0	7,251.2	17.1	16.9	-53.44	267.4	233.1	113.0	79.1	33.86	3.337		
7,400.0	7,377.2	7,369.0	7,327.7	17.2	16.9	-44.59	226.3	236.9	129.7	96.5	33.18	3.909		
7,500.0	7,469.8	7,453.9	7,397.0	17.2	16.9	-38.24	177.6	241.5	147.1	115.3	31.87	4.617		
7,600.0	7,556.4	7,536.9	7,458.7	17.1	16.9	-33.66	122.3	246.7	164.1	134.1	30.03	5.465		
7,700.0	7,635.1	7,618.5	7,512.7	17.1	16.8	-30.32	61.5	252.4	179.7	152.0	27.78	6.470		
7,800.0	7,704.5	7,700.0	7,559.3	17.1	16.8	-27.86	-5.0	258.6	193.5	168.2	25.30	7.651		
7,900.0	7,763.3	7,778.3	7,596.7	17.2	17.0	-26.13	-73.5	265.0	205.1	182.3	22.80	8.995		
8,000.0	7,810.2	7,856.9	7,626.5	17.5	17.5	-24.89	-145.9	271.8	214.1	193.6	20.57	10.408		
8,100.0	7,844.3	7,935.1	7,648.0	18.1	18.0	-24.09	-220.6	278.8	220.5	201.5	19.02	11.595		
8,200.0	7,865.1	8,012.9	7,661.2	18.8	18.6	-23.67	-297.0	286.0	224.1	205.6	18.52	12.100		
8,300.0	7,871.0	8,091.9	7,666.0	19.6	19.3	-23.69	-375.4	293.4	223.9	204.6	19.34	11.577		
8,326.9	7,871.2	8,116.1	7,666.1	19.9	19.5	-23.69	-399.6	295.6	223.9	204.3	19.67	11.384		
8,400.0	7,871.6	8,189.2	7,666.5	20.6	20.3	-23.69	-472.3	302.4	224.0	203.3	20.63	10.857		
8,500.0	7,872.2	8,289.2	7,667.1	21.8	21.4	-23.68	-571.9	311.7	224.0	202.0	22.05	10.159		
8,600.0	7,872.9	8,389.2	7,667.7	23.0	22.7	-23.67	-671.5	321.0	224.0	200.5	23.57	9.507		
8,700.0	7,873.5	8,489.2	7,668.2	24.3	24.0	-23.66	-771.0	330.3	224.1	198.9	25.16	8.905		
8,800.0	7,874.1	8,589.2	7,668.8	25.8	25.4	-23.65	-870.6	339.6	224.1	197.3	26.83	8.354		
8,900.0	7,874.7	8,689.2	7,669.4	27.2	26.9	-23.65	-970.2	348.8	224.2	195.6	28.54	7.854		
9,000.0	7,875.3	8,789.2	7,669.9	28.8	28.5	-23.64	-1,069.7	358.1	224.2	193.9	30.30	7.399		
9,100.0	7,875.9	8,889.2	7,670.5	30.4	30.1	-23.63	-1,169.3	367.4	224.3	192.2	32.10	6.986		
9,200.0	7,876.5	8,989.2	7,671.0	32.0	31.8	-23.62	-1,268.9	376.7	224.3	190.4	33.93	6.610		
9,300.0	7,877.2	9,089.2	7,671.6	33.7	33.4	-23.61	-1,368.4	386.0	224.3	188.6	35.79	6.269		
9,400.0	7,877.8	9,189.2	7,672.2	35.4	35.1	-23.61	-1,468.0	395.3	224.4	186.7	37.66	5.958		
9,500.0	7,878.4	9,289.2	7,672.7	37.1	36.9	-23.60	-1,567.6	404.6	224.4	184.9	39.56	5.673		
9,600.0	7,879.0	9,389.2	7,673.3	38.9	38.6	-23.59	-1,667.1	413.9	224.5	183.0	41.47	5.412		
9,700.0	7,879.6	9,489.2	7,673.9	40.7	40.4	-23.58	-1,766.7	423.2	224.5	181.1	43.40	5.173		
9,800.0	7,880.2	9,589.2	7,674.4	42.4	42.2	-23.57	-1,866.3	432.5	224.5	179.2	45.34	4.953		
9,900.0	7,880.8	9,689.2	7,675.0	44.3	44.0	-23.57	-1,965.8	441.7	224.6	177.3	47.28	4.750		
10,000.0	7,881.5	9,789.2	7,675.6	46.1	45.8	-23.56	-2,065.4	451.0	224.6	175.4	49.24	4.562		
10,100.0	7,882.1	9,889.2	7,676.1	47.9	47.7	-23.55	-2,164.9	460.3	224.7	173.5	51.21	4.387		
10,200.0	7,882.7	9,989.2	7,676.7	49.7	49.5	-23.54	-2,264.5	469.6	224.7	171.5	53.18	4.225		
10,300.0	7,883.3	10,089.2	7,677.2	51.6	51.4	-23.53	-2,364.1	478.9	224.8	169.6	55.16	4.075		
10,400.0	7,883.9	10,189.2	7,677.8	53.5	53.2	-23.53	-2,463.6	488.2	224.8	167.7	57.15	3.934		
10,500.0	7,884.5	10,289.2	7,678.4	55.3	55.1	-23.52	-2,563.2	497.5	224.8	165.7	59.13	3.802		
10,600.0	7,885.1	10,389.2	7,678.9	57.2	57.0	-23.51	-2,662.8	506.8	224.9	163.8	61.13	3.679		
10,700.0	7,885.8	10,489.2	7,679.5	59.1	58.9	-23.50	-2,762.3	516.1	224.9	161.8	63.13	3.563		
10,800.0	7,886.4	10,589.2	7,680.1	61.0	60.8	-23.49	-2,861.9	525.4	225.0	159.8	65.13	3.454		
10,900.0	7,887.0	10,689.2	7,680.6	62.9	62.7	-23.49	-2,961.5	534.6	225.0	157.9	67.13	3.352		
11,000.0	7,887.6	10,789.2	7,681.2	64.8	64.6	-23.48	-3,061.0	543.9	225.0	155.9	69.14	3.255		
11,100.0	7,888.2	10,889.2	7,681.7	66.7	66.5	-23.47	-3,160.6	553.2	225.1	153.9	71.15	3.164		
11,200.0	7,888.8	10,989.2	7,682.3	68.6	68.4	-23.46	-3,260.2	562.5	225.1	152.0	73.16	3.077		
11,300.0	7,889.4	11,089.2	7,682.9	70.5	70.3	-23.46	-3,359.7	571.8	225.2	150.0	75.18	2.995		
11,400.0	7,890.1	11,189.2	7,683.4	72.4	72.2	-23.45	-3,459.3	581.1	225.2	148.0	77.19	2.918		
11,500.0	7,890.7	11,289.2	7,684.0	74.3	74.1	-23.44	-3,558.9	590.4	225.3	146.1	79.21	2.844		
11,600.0	7,891.3	11,389.2	7,684.6	76.2	76.0	-23.43	-3,658.4	599.7	225.3	144.1	81.23	2.774		
11,700.0	7,891.9	11,489.2	7,685.1	78.1	78.0	-23.42	-3,758.0	609.0	225.3	142.1	83.25	2.707		
11,800.0	7,892.5	11,589.2	7,685.7	80.1	79.9	-23.42	-3,857.6	618.3	225.4	140.1	85.27	2.643		
11,900.0	7,893.1	11,689.2	7,686.3	82.0	81.8	-23.41	-3,957.1	627.5	225.4	138.1	87.29	2.583		
12,000.0	7,893.7	11,789.2	7,686.8	83.9	83.7	-23.40	-4,056.7	636.8	225.5	136.2	89.31	2.524		
12,100.0	7,894.4	11,889.2	7,687.4	85.9	85.7	-23.39	-4,156.3	646.1	225.5	134.2	91.34	2.469		
12,200.0	7,895.0	11,989.2	7,687.9	87.8	87.6	-23.38	-4,255.8	655.4	225.6	132.2	93.36	2.416		

CC - Min centre to center distance or convergent point, SF - min separation factor, ES - min ellipse separation

Company:	Clear Creek Resource Partners	Local Co-ordinate Reference:	Well Salt Ranch Fee 501-1015H
Project:	SEC.10-T11N-R64W	TVD Reference:	WELL @ 5456.0ft (Original Well Elev)
Reference Site:	Salt Ranch East 10 Pad Sec.10-T11N-R64W	MD Reference:	WELL @ 5456.0ft (Original Well Elev)
Site Error:	0.0 ft	North Reference:	True
Reference Well:	Salt Ranch Fee 501-1015H	Survey Calculation Method:	Minimum Curvature
Well Error:	0.0 ft	Output errors are at	2.00 sigma
Reference Wellbore	Wellbore #1	Database:	US_EDM
Reference Design:	Plan #2 (10-11-17)	Offset TVD Reference:	Offset Datum

Offset Design													Offset Site Error:	0.0 ft
Survey Program: 0-MWD													Offset Well Error:	0.0 ft
Reference		Offset		Semi Major Axis			Distance							Warning
Measured Depth (ft)	Vertical Depth (ft)	Measured Depth (ft)	Vertical Depth (ft)	Reference (ft)	Offset (ft)	Highside Toolface (°)	Offset Wellbore Centre +N/-S (ft)	+E/-W (ft)	Between Centres (ft)	Between Ellipses (ft)	Minimum Separation (ft)	Separation Factor		
12,300.0	7,895.6	12,089.2	7,688.5	89.7	89.5	-23.38	-4,355.4	664.7	225.6	130.2	95.39	2.365		
12,400.0	7,896.2	12,189.2	7,689.1	91.7	91.5	-23.37	-4,455.0	674.0	225.6	128.2	97.41	2.316		
12,500.0	7,896.8	12,289.2	7,689.6	93.6	93.4	-23.36	-4,554.5	683.3	225.7	126.2	99.44	2.270		
12,600.0	7,897.4	12,389.2	7,690.2	95.5	95.4	-23.35	-4,654.1	692.6	225.7	124.3	101.46	2.225		
12,700.0	7,898.0	12,489.2	7,690.8	97.5	97.3	-23.34	-4,753.7	701.9	225.8	122.3	103.49	2.181		
12,800.0	7,898.6	12,589.2	7,691.3	99.4	99.2	-23.34	-4,853.2	711.2	225.8	120.3	105.52	2.140		
12,900.0	7,899.3	12,689.2	7,691.9	101.4	101.2	-23.33	-4,952.8	720.4	225.8	118.3	107.55	2.100		
13,000.0	7,899.9	12,789.2	7,692.4	103.3	103.1	-23.32	-5,052.4	729.7	225.9	116.3	109.57	2.062		
13,100.0	7,900.5	12,890.4	7,693.0	105.1	105.0	-23.47	-5,153.1	738.7	226.2	114.4	111.80	2.023		
13,200.0	7,901.1	12,992.0	7,693.6	106.8	106.7	-24.01	-5,254.4	745.9	227.2	112.5	114.71	1.980		
13,300.0	7,901.7	13,093.5	7,694.2	108.4	108.4	-24.93	-5,355.9	751.3	228.9	110.5	118.42	1.933		
13,400.0	7,902.3	13,195.2	7,694.7	110.2	110.1	-26.01	-5,457.5	755.0	231.0	108.2	122.79	1.881		
13,500.0	7,903.0	13,297.0	7,695.3	112.0	111.8	-26.72	-5,559.2	756.8	232.5	106.0	126.50	1.838		
13,600.0	7,903.6	13,398.8	7,695.9	113.9	113.5	-27.01	-5,661.1	756.8	233.1	103.8	129.30	1.803		
13,700.0	7,904.2	13,499.7	7,696.5	115.8	115.2	-26.97	-5,761.9	755.3	233.1	101.8	131.31	1.775		
13,800.0	7,904.8	13,599.7	7,697.0	117.7	117.1	-26.89	-5,861.9	753.6	233.0	99.7	133.26	1.748		
13,900.0	7,905.4	13,699.7	7,697.6	119.5	119.0	-26.80	-5,961.9	752.0	232.9	97.7	135.20	1.722		
14,000.0	7,906.0	13,799.7	7,698.2	121.4	120.9	-26.72	-6,061.9	750.3	232.7	95.6	137.13	1.697		
14,100.0	7,906.7	13,899.7	7,698.7	123.3	122.7	-26.63	-6,161.9	748.6	232.6	93.6	139.06	1.673		
14,200.0	7,907.3	13,999.7	7,699.3	125.2	124.6	-26.55	-6,261.9	746.9	232.5	91.5	140.98	1.649		
14,300.0	7,907.9	14,099.7	7,699.9	127.1	126.5	-26.46	-6,361.8	745.2	232.4	89.5	142.90	1.626		
14,400.0	7,908.5	14,199.7	7,700.4	129.0	128.4	-26.38	-6,461.8	743.5	232.3	87.5	144.81	1.604		
14,500.0	7,909.1	14,299.7	7,701.0	130.9	130.3	-26.29	-6,561.8	741.8	232.2	85.5	146.72	1.582		
14,600.0	7,909.7	14,399.7	7,701.5	132.8	132.1	-26.21	-6,661.8	740.1	232.1	83.4	148.61	1.562		
14,700.0	7,910.4	14,499.7	7,702.1	134.6	134.0	-26.12	-6,761.8	738.4	231.9	81.4	150.51	1.541		
14,800.0	7,911.0	14,599.7	7,702.7	136.5	135.9	-26.04	-6,861.8	736.7	231.8	79.4	152.39	1.521		
14,900.0	7,911.6	14,699.7	7,703.2	138.4	137.8	-25.95	-6,961.7	735.0	231.7	77.5	154.27	1.502		
15,000.0	7,912.2	14,799.7	7,703.8	140.3	139.7	-25.86	-7,061.7	733.3	231.6	75.5	156.14	1.483 Level 3		
15,100.0	7,912.8	14,899.7	7,704.4	142.2	141.6	-25.78	-7,161.7	731.6	231.5	73.5	158.01	1.465 Level 3		
15,200.0	7,913.4	14,999.7	7,704.9	144.1	143.5	-25.69	-7,261.7	729.9	231.4	71.5	159.87	1.447 Level 3		
15,300.0	7,914.1	15,099.7	7,705.5	146.0	145.4	-25.61	-7,361.7	728.3	231.3	69.6	161.72	1.430 Level 3		
15,400.0	7,914.7	15,199.7	7,706.1	147.9	147.3	-25.52	-7,461.7	726.6	231.2	67.6	163.57	1.413 Level 3		
15,500.0	7,915.3	15,299.7	7,706.6	149.8	149.2	-25.44	-7,561.6	724.9	231.1	65.7	165.41	1.397 Level 3		
15,600.0	7,915.9	15,399.7	7,707.2	151.7	151.1	-25.35	-7,661.6	723.2	231.0	63.7	167.24	1.381 Level 3		
15,700.0	7,916.5	15,499.7	7,707.8	153.6	152.9	-25.26	-7,761.6	721.5	230.9	61.8	169.07	1.365 Level 3		
15,800.0	7,917.2	15,599.7	7,708.3	155.5	154.8	-25.18	-7,861.6	719.8	230.7	59.9	170.89	1.350 Level 3		
15,900.0	7,917.8	15,699.7	7,708.9	157.4	156.7	-25.09	-7,961.6	718.1	230.6	57.9	172.70	1.335 Level 3		
16,000.0	7,918.4	15,799.7	7,709.5	159.3	158.6	-25.00	-8,061.6	716.4	230.5	56.0	174.51	1.321 Level 3		
16,100.0	7,919.0	15,899.7	7,710.0	161.2	160.5	-24.92	-8,161.6	714.7	230.4	54.1	176.31	1.307 Level 3		
16,200.0	7,919.6	15,999.7	7,710.6	163.1	162.4	-24.83	-8,261.5	713.0	230.3	52.2	178.11	1.293 Level 3		
16,300.0	7,920.2	16,099.7	7,711.2	165.0	164.3	-24.74	-8,361.5	711.3	230.2	50.3	179.89	1.280 Level 3		
16,400.0	7,920.9	16,199.7	7,711.7	166.9	166.2	-24.66	-8,461.5	709.6	230.1	48.4	181.67	1.267 Level 3		
16,500.0	7,921.5	16,299.7	7,712.3	168.8	168.1	-24.57	-8,561.5	707.9	230.0	46.6	183.45	1.254 Level 3		
16,600.0	7,922.1	16,399.7	7,712.9	170.7	170.0	-24.48	-8,661.5	706.2	229.9	44.7	185.22	1.241 Level 2		
16,700.0	7,922.7	16,499.7	7,713.4	172.6	171.9	-24.40	-8,761.5	704.5	229.8	42.8	186.98	1.229 Level 2		
16,800.0	7,923.3	16,599.7	7,714.0	174.5	173.8	-24.31	-8,861.4	702.9	229.7	41.0	188.73	1.217 Level 2		
16,900.0	7,923.9	16,699.7	7,714.6	176.4	175.7	-24.22	-8,961.4	701.2	229.6	39.1	190.48	1.205 Level 2		
17,000.0	7,924.6	16,799.7	7,715.1	178.4	177.6	-24.13	-9,061.4	699.5	229.5	37.3	192.22	1.194 Level 2		
17,100.0	7,925.2	16,899.7	7,715.7	180.3	179.5	-24.05	-9,161.4	697.8	229.4	35.5	193.96	1.183 Level 2		
17,200.0	7,925.8	16,999.7	7,716.2	182.2	181.5	-23.96	-9,261.4	696.1	229.3	33.6	195.68	1.172 Level 2		
17,300.0	7,926.4	17,099.7	7,716.8	184.1	183.4	-23.87	-9,361.4	694.4	229.2	31.8	197.41	1.161 Level 2		
17,400.0	7,927.0	17,199.7	7,717.4	186.0	185.3	-23.78	-9,461.3	692.7	229.1	30.0	199.12	1.151 Level 2		

CC - Min centre to center distance or convergent point, SF - min separation factor, ES - min ellipse separation

Company:	Clear Creek Resource Partners	Local Co-ordinate Reference:	Well Salt Ranch Fee 501-1015H
Project:	SEC.10-T11N-R64W	TVD Reference:	WELL @ 5456.0ft (Original Well Elev)
Reference Site:	Salt Ranch East 10 Pad Sec.10-T11N-R64W	MD Reference:	WELL @ 5456.0ft (Original Well Elev)
Site Error:	0.0 ft	North Reference:	True
Reference Well:	Salt Ranch Fee 501-1015H	Survey Calculation Method:	Minimum Curvature
Well Error:	0.0 ft	Output errors are at	2.00 sigma
Reference Wellbore	Wellbore #1	Database:	US_EDM
Reference Design:	Plan #2 (10-11-17)	Offset TVD Reference:	Offset Datum

Offset Design												Offset Site Error:	0.0 ft
Survey Program: 0-MWD												Offset Well Error:	0.0 ft
Salt Ranch East 10 Pad Sec.10-T11N-R64W - Salt Ranch Fee 201-1015H - Wellbore #1 - Plan #2 (10-1													
Reference		Offset		Semi Major Axis			Distance						
Measured Depth	Vertical Depth	Measured Depth	Vertical Depth	Reference	Offset	Highside Toolface	Offset Wellbore Centre		Between Centres	Between Ellipses	Minimum Separation	Separation Factor	Warning
(ft)	(ft)	(ft)	(ft)	(ft)	(ft)	(°)	+N/-S (ft)	+E/-W (ft)	(ft)	(ft)	(ft)		
17,500.0	7,927.6	17,299.7	7,717.9	187.9	187.2	-23.70	-9,561.3	691.0	229.0	28.2	200.83	1.140 Level 2	
17,600.0	7,928.3	17,399.7	7,718.5	189.8	189.1	-23.61	-9,661.3	689.3	228.9	26.4	202.53	1.130 Level 2	
17,700.0	7,928.9	17,499.7	7,719.1	191.7	191.0	-23.52	-9,761.3	687.6	228.8	24.6	204.23	1.120 Level 2	
17,800.0	7,929.5	17,599.7	7,719.6	193.6	192.9	-23.43	-9,861.3	685.9	228.7	22.8	205.91	1.111 Level 2	
17,900.0	7,930.1	17,699.7	7,720.2	195.5	194.8	-23.34	-9,961.3	684.2	228.6	21.0	207.60	1.101 Level 2	
18,000.0	7,930.7	17,799.7	7,720.8	197.4	196.7	-23.26	-10,061.2	682.5	228.5	19.3	209.27	1.092 Level 2	
18,034.7	7,930.9	17,834.3	7,721.0	198.1	197.4	-23.23	-10,095.9	682.0	228.5	18.7	209.85	1.089 Level 2	
18,043.6	7,931.0	17,840.3	7,721.0	198.3	197.5	-23.22	-10,101.8	681.9	228.5	18.5	209.98	1.088 Level 2, ES, SF	

Company:	Clear Creek Resource Partners	Local Co-ordinate Reference:	Well Salt Ranch Fee 501-1015H
Project:	SEC.10-T11N-R64W	TVD Reference:	WELL @ 5456.0ft (Original Well Elev)
Reference Site:	Salt Ranch East 10 Pad Sec.10-T11N-R64W	MD Reference:	WELL @ 5456.0ft (Original Well Elev)
Site Error:	0.0 ft	North Reference:	True
Reference Well:	Salt Ranch Fee 501-1015H	Survey Calculation Method:	Minimum Curvature
Well Error:	0.0 ft	Output errors are at	2.00 sigma
Reference Wellbore	Wellbore #1	Database:	US_EDM
Reference Design:	Plan #2 (10-11-17)	Offset TVD Reference:	Offset Datum

Offset Design													Offset Site Error:	0.0 ft
Survey Program: 0-MWD													Offset Well Error:	0.0 ft
Reference		Offset		Semi Major Axis			Distance							Warning
Measured Depth (ft)	Vertical Depth (ft)	Measured Depth (ft)	Vertical Depth (ft)	Reference (ft)	Offset (ft)	Highside Toolface (°)	Offset Wellbore Centre +N/-S (ft)	+E/-W (ft)	Between Centres (ft)	Between Ellipses (ft)	Minimum Separation (ft)	Separation Factor		
0.0	0.0	0.0	0.0	0.0	0.0	-89.31	0.4	-30.1	30.1					
100.0	100.0	100.0	100.0	0.1	0.1	-89.31	0.4	-30.1	30.1	29.9	0.22	133.989		
200.0	200.0	200.0	200.0	0.3	0.3	-89.31	0.4	-30.1	30.1	29.4	0.67	44.663		
300.0	300.0	300.0	300.0	0.6	0.6	-89.31	0.4	-30.1	30.1	29.0	1.12	26.798		
400.0	400.0	400.0	400.0	0.8	0.8	-89.31	0.4	-30.1	30.1	28.5	1.57	19.141	CC, ES	
500.0	500.0	500.0	500.0	1.0	1.0	-114.00	0.4	-30.1	30.6	28.6	2.02	15.144		
600.0	599.9	599.9	599.9	1.2	1.2	-120.32	0.4	-30.1	32.4	29.9	2.47	13.104		
700.0	699.7	699.7	699.7	1.5	1.5	-129.25	0.4	-30.1	36.2	33.2	2.93	12.327	SF	
800.0	799.3	799.3	799.3	1.7	1.7	-138.75	0.4	-30.1	42.6	39.2	3.40	12.508		
900.0	898.7	898.3	898.3	2.0	1.9	-145.45	1.2	-31.1	51.7	47.9	3.86	13.400		
1,000.0	998.1	997.3	997.2	2.3	2.1	-147.83	3.6	-34.1	62.1	57.8	4.31	14.392		
1,100.0	1,097.4	1,096.2	1,095.9	2.5	2.3	-147.57	7.6	-39.0	73.2	68.4	4.78	15.313		
1,200.0	1,196.8	1,194.9	1,194.2	2.8	2.6	-145.71	13.2	-46.0	85.0	79.8	5.26	16.161		
1,300.0	1,296.2	1,293.2	1,291.8	3.1	2.8	-142.90	20.3	-54.9	97.8	92.0	5.77	16.963		
1,400.0	1,395.6	1,391.7	1,389.4	3.4	3.1	-139.73	28.8	-65.4	111.6	105.3	6.29	17.730		
1,500.0	1,495.0	1,490.5	1,487.3	3.7	3.4	-137.16	37.4	-76.1	125.7	118.9	6.83	18.400		
1,600.0	1,594.4	1,589.4	1,585.2	4.0	3.7	-135.12	46.0	-86.8	140.0	132.6	7.38	18.980		
1,700.0	1,693.8	1,688.3	1,683.1	4.3	4.0	-133.46	54.7	-97.5	154.5	146.6	7.93	19.484		
1,800.0	1,793.1	1,787.1	1,781.0	4.6	4.3	-132.08	63.3	-108.2	169.1	160.6	8.48	19.926		
1,900.0	1,892.5	1,886.0	1,878.9	4.9	4.6	-130.92	71.9	-118.9	183.7	174.7	9.04	20.314		
2,000.0	1,991.9	1,984.8	1,976.8	5.2	4.9	-129.93	80.6	-129.6	198.4	188.8	9.61	20.659		
2,100.0	2,091.3	2,083.7	2,074.7	5.5	5.2	-129.08	89.2	-140.3	213.2	203.0	10.17	20.966		
2,200.0	2,190.7	2,182.5	2,172.6	5.8	5.6	-128.34	97.8	-151.0	228.0	217.3	10.73	21.241		
2,300.0	2,290.1	2,281.4	2,270.5	6.1	5.9	-127.69	106.4	-161.7	242.9	231.6	11.30	21.490		
2,400.0	2,389.5	2,380.3	2,368.4	6.4	6.2	-127.12	115.1	-172.4	257.7	245.9	11.87	21.714		
2,500.0	2,488.9	2,479.1	2,466.3	6.7	6.5	-126.60	123.7	-183.1	272.6	260.2	12.44	21.918		
2,600.0	2,588.2	2,578.0	2,564.2	7.0	6.9	-126.14	132.3	-193.8	287.5	274.5	13.01	22.105		
2,700.0	2,687.6	2,676.8	2,662.0	7.3	7.2	-125.73	141.0	-204.5	302.4	288.9	13.58	22.275		
2,800.0	2,787.0	2,775.7	2,759.9	7.6	7.5	-125.35	149.6	-215.2	317.4	303.2	14.15	22.432		
2,900.0	2,886.4	2,874.5	2,857.8	7.9	7.9	-125.01	158.2	-225.9	332.3	317.6	14.72	22.577		
3,000.0	2,985.8	2,973.4	2,955.7	8.2	8.2	-124.70	166.8	-236.6	347.3	332.0	15.29	22.711		
3,100.0	3,085.2	3,072.3	3,053.6	8.5	8.5	-124.41	175.5	-247.3	362.3	346.4	15.86	22.836		
3,200.0	3,184.6	3,171.1	3,151.5	8.8	8.9	-124.15	184.1	-258.0	377.3	360.8	16.44	22.951		
3,300.0	3,284.0	3,270.0	3,249.4	9.1	9.2	-123.91	192.7	-268.7	392.2	375.2	17.01	23.059		
3,400.0	3,383.3	3,368.8	3,347.3	9.4	9.5	-123.68	201.3	-279.4	407.2	389.7	17.58	23.160		
3,500.0	3,482.7	3,467.7	3,445.2	9.7	9.9	-123.47	210.0	-290.1	422.2	404.1	18.16	23.254		
3,600.0	3,582.1	3,566.5	3,543.1	10.0	10.2	-123.28	218.6	-300.8	437.2	418.5	18.73	23.343		
3,700.0	3,681.5	3,665.4	3,641.0	10.3	10.6	-123.10	227.2	-311.5	452.2	432.9	19.31	23.426		
3,800.0	3,781.1	3,764.4	3,739.0	10.5	10.9	-122.98	235.9	-322.2	466.4	446.5	19.86	23.482		
3,900.0	3,880.9	3,863.4	3,837.1	10.7	11.2	-122.51	244.5	-332.9	478.6	458.3	20.35	23.516		
4,000.0	3,980.8	3,962.5	3,935.3	10.9	11.6	-121.70	253.2	-343.6	489.1	468.3	20.81	23.506		
4,100.0	4,080.8	4,061.6	4,033.3	11.0	11.9	-98.13	261.8	-354.3	498.6	477.4	21.14	23.581		

Company:	Clear Creek Resource Partners	Local Co-ordinate Reference:	Well Salt Ranch Fee 501-1015H
Project:	SEC.10-T11N-R64W	TVD Reference:	WELL @ 5456.0ft (Original Well Elev)
Reference Site:	Salt Ranch East 10 Pad Sec.10-T11N-R64W	MD Reference:	WELL @ 5456.0ft (Original Well Elev)
Site Error:	0.0 ft	North Reference:	True
Reference Well:	Salt Ranch Fee 501-1015H	Survey Calculation Method:	Minimum Curvature
Well Error:	0.0 ft	Output errors are at	2.00 sigma
Reference Wellbore	Wellbore #1	Database:	US_EDM
Reference Design:	Plan #2 (10-11-17)	Offset TVD Reference:	Offset Datum

Salt Ranch East 10 Pad Sec.10-T11N-R64W - Salt Ranch Fee 502-1015H - Wellbore #1 - Plan #2 (10-1)													Offset Site Error: 0.0 ft	
Survey Program: 0-MWD													Offset Well Error: 0.0 ft	
Reference		Offset		Semi Major Axis			Distance						Warning	
Measured Depth (ft)	Vertical Depth (ft)	Measured Depth (ft)	Vertical Depth (ft)	Reference (ft)	Offset (ft)	Highside Toolface (°)	Offset Wellbore Centre +N/-S (ft)	+E/-W (ft)	Between Centres (ft)	Between Ellipses (ft)	Minimum Separation (ft)	Separation Factor		
0.0	0.0	0.0	0.0	0.0	0.0	-89.30	0.7	-60.0	60.0					
100.0	100.0	100.0	100.0	0.1	0.1	-89.30	0.7	-60.0	60.0	59.7	0.22	266.749	88.916 CC, ES	
200.0	200.0	200.0	200.0	0.3	0.3	-89.30	0.7	-60.0	60.0	59.3	0.67	88.916		
300.0	300.0	298.6	298.6	0.6	0.6	-88.81	1.3	-61.1	61.1	60.0	1.11	54.836		
400.0	400.0	397.0	396.9	0.8	0.8	-87.44	2.9	-64.6	64.7	63.1	1.56	41.506		
500.0	500.0	495.2	494.9	1.0	1.0	-108.79	5.6	-70.3	71.1	69.1	2.01	35.356		
600.0	599.9	592.9	592.2	1.2	1.3	-108.94	9.3	-78.2	80.7	78.3	2.47	32.702	31.835 SF	
700.0	699.7	690.0	688.7	1.5	1.5	-109.91	14.1	-88.4	93.6	90.6	2.94	31.835		
800.0	799.3	786.3	784.0	1.7	1.8	-111.29	19.8	-100.6	109.7	106.2	3.43	31.970		
900.0	898.7	881.8	878.1	2.0	2.2	-112.70	26.5	-114.9	128.7	124.8	3.94	32.662		
1,000.0	998.1	979.2	974.0	2.3	2.5	-113.58	34.0	-130.8	149.3	144.8	4.47	33.392		
1,100.0	1,097.4	1,077.1	1,070.3	2.5	2.9	-114.24	41.5	-146.8	169.8	164.8	5.00	33.935		
1,200.0	1,196.8	1,174.9	1,166.5	2.8	3.3	-114.76	49.0	-162.8	190.4	184.9	5.55	34.320		
1,300.0	1,296.2	1,272.8	1,262.7	3.1	3.7	-115.18	56.5	-178.8	211.0	204.9	6.10	34.596		
1,400.0	1,395.6	1,370.6	1,359.0	3.4	4.1	-115.52	64.0	-194.8	231.6	224.9	6.65	34.805		
1,500.0	1,495.0	1,468.5	1,455.2	3.7	4.5	-115.81	71.5	-210.8	252.2	245.0	7.21	34.963		
1,600.0	1,594.4	1,566.3	1,551.4	4.0	4.9	-116.06	79.0	-226.8	272.8	265.0	7.78	35.085		
1,700.0	1,693.8	1,664.2	1,647.7	4.3	5.3	-116.27	86.5	-242.8	293.4	285.1	8.34	35.180		
1,800.0	1,793.1	1,762.0	1,743.9	4.6	5.7	-116.45	94.0	-258.8	314.1	305.2	8.91	35.256		
1,900.0	1,892.5	1,859.8	1,840.1	4.9	6.1	-116.61	101.6	-274.9	334.7	325.2	9.48	35.316		
2,000.0	1,991.9	1,957.7	1,936.4	5.2	6.5	-116.75	109.1	-290.9	355.3	345.3	10.05	35.365		
2,100.0	2,091.3	2,055.5	2,032.6	5.5	6.9	-116.88	116.6	-306.9	375.9	365.3	10.62	35.405		
2,200.0	2,190.7	2,153.4	2,128.8	5.8	7.3	-116.99	124.1	-322.9	396.6	385.4	11.19	35.438		
2,300.0	2,290.1	2,251.2	2,225.1	6.1	7.7	-117.09	131.6	-338.9	417.2	405.4	11.76	35.465		
2,400.0	2,389.5	2,349.1	2,321.3	6.4	8.1	-117.18	139.1	-354.9	437.8	425.5	12.34	35.488		
2,500.0	2,488.9	2,446.9	2,417.6	6.7	8.5	-117.27	146.6	-370.9	458.5	445.6	12.91	35.507		
2,600.0	2,588.2	2,544.8	2,513.8	7.0	8.9	-117.34	154.1	-386.9	479.1	465.6	13.49	35.523		
2,700.0	2,687.6	2,642.6	2,610.0	7.3	9.3	-117.41	161.6	-402.9	499.7	485.7	14.06	35.537		

Company:	Clear Creek Resource Partners	Local Co-ordinate Reference:	Well Salt Ranch Fee 501-1015H
Project:	SEC.10-T11N-R64W	TVD Reference:	WELL @ 5456.0ft (Original Well Elev)
Reference Site:	Salt Ranch East 10 Pad Sec.10-T11N-R64W	MD Reference:	WELL @ 5456.0ft (Original Well Elev)
Site Error:	0.0 ft	North Reference:	True
Reference Well:	Salt Ranch Fee 501-1015H	Survey Calculation Method:	Minimum Curvature
Well Error:	0.0 ft	Output errors are at	2.00 sigma
Reference Wellbore	Wellbore #1	Database:	US_EDM
Reference Design:	Plan #2 (10-11-17)	Offset TVD Reference:	Offset Datum

Reference Depths are relative to WELL @ 5456.0ft (Original Well Elev)

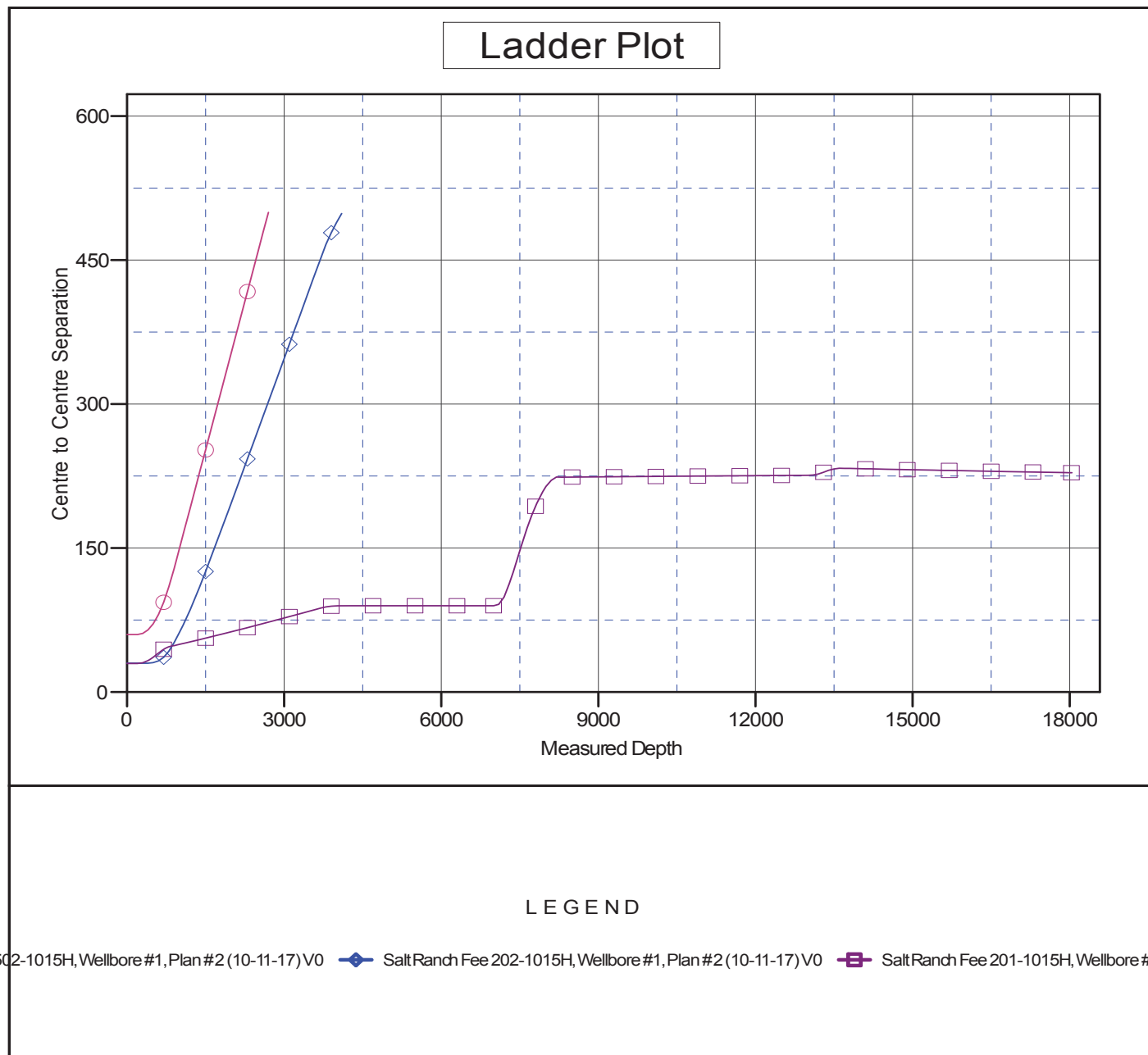
Offset Depths are relative to Offset Datum

Central Meridian is -105.500000

Coordinates are relative to: Salt Ranch Fee 501-1015H

Coordinate System is US State Plane 1983, Colorado Northern Zone

Grid Convergence at Surface is: 0.63°



Company:	Clear Creek Resource Partners	Local Co-ordinate Reference:	Well Salt Ranch Fee 501-1015H
Project:	SEC.10-T11N-R64W	TVD Reference:	WELL @ 5456.0ft (Original Well Elev)
Reference Site:	Salt Ranch East 10 Pad Sec.10-T11N-R64W	MD Reference:	WELL @ 5456.0ft (Original Well Elev)
Site Error:	0.0 ft	North Reference:	True
Reference Well:	Salt Ranch Fee 501-1015H	Survey Calculation Method:	Minimum Curvature
Well Error:	0.0 ft	Output errors are at	2.00 sigma
Reference Wellbore	Wellbore #1	Database:	US_EDM
Reference Design:	Plan #2 (10-11-17)	Offset TVD Reference:	Offset Datum

Reference Depths are relative to WELL @ 5456.0ft (Original Well Elev)
Offset Depths are relative to Offset Datum
Central Meridian is -105.500000

Coordinates are relative to: Salt Ranch Fee 501-1015H
Coordinate System is US State Plane 1983, Colorado Northern Zone
Grid Convergence at Surface is: 0.63°

