

### LAND SURVEYOR'S CERTIFICATION

LAMP, RYNEARSON & ASSOCIATES, INC., OF FT. COLLINS, COLORADO HAS, IN ACCORDANCE WITH A REQUEST FROM ERIN MATHEWS, DETERMINED THE SURFACE LOCATION OF THE WELL DESIGNATED AS WS-SUNRISE C1-5-5 TO BE 250' FROM THE SOUTH LINE AND 1686' FROM THE EAST LINE OF SECTION 32, TOWNSHIP 6 NORTH, RANGE 65 WEST OF THE 6TH P.M., WELD COUNTY, COLORADO.



LAINE A. LANDAU  
 COLORADO PLS 31159

DATE OF SURVEY: 8/19/2010 (SECTION CONTROL)  
 DATE OF SURVEY: 7/13/2017 (WELL LOCATION)



0 1000

SCALE: 1" = 1000'  
 U.S. SURVEY FEET

### NOTES:

- DISTANCES ARE MEASURED PERPENDICULAR TO NEAREST SECTION LINE AND ARE SHOWN ON THE SAME SIDE OF THE SECTION LINE WHERE THE WELL IS LOCATED.
- THIS MAP DOES NOT REPRESENT A MONUMENTED BOUNDARY SURVEY. SIXTEENTH CORNER LOCATIONS ARE COMPUTED, UNLESS OTHERWISE NOTED.
- BOTTOM HOLE LOCATIONS AND HORIZONTAL COMPLETION ZONE PROVIDED BY OTHERS.

### BASIS OF BEARING:

THE SOUTH LINE OF THE SOUTHEAST QUARTER OF SECTION 32-T6N-R65W BEARS N85°52'57"W BETWEEN THE SOUTH QUARTER CORNER OF SECTION 32 MONUMENTED WITH 3 1/4" A.C. IN R.B. STAMPED "PLS 28259" AND THE SOUTHEAST CORNER OF SECTION 32 MONUMENTED WITH A 2 1/2" A.C. IN R.B. STAMPED "LS 17500" BASED ON THE COLORADO NORTH 0501 STATE PLANE COORDINATE SYSTEM.

ELEVATIONS ARE BASED ON NAVD 88, AS OBSERVED FROM GPS OBSERVATIONS



**LAMP RYNEARSON**  
 & ASSOCIATES

4715 Innovation Drive 970.226.0342 | P  
 Fort Collins, CO 80525 970.226.0879 | F  
 www.LRA-Inc.com

Proposed Well Location Exhibit  
 Wake South Directional Project  
 WS-Sunrise C1-5-5  
 1 of 2

drawn by

KJW

date

7/19/2017

cogcc id

432599

project - task number

0215045.03

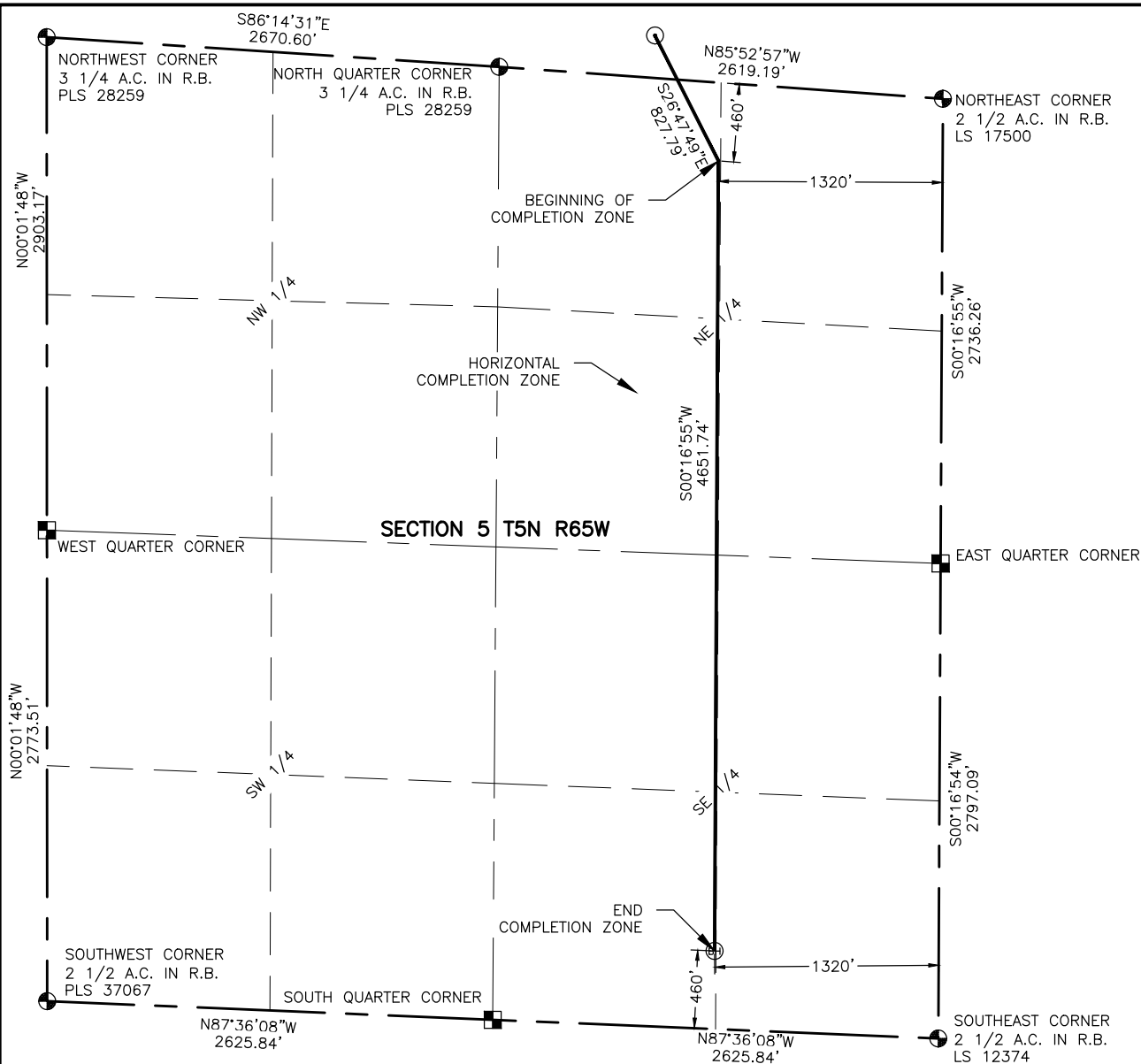
book and page

MR-4/42

surface - location

SW/4 SE/4 SEC 32 T6N R65W

path/filename P:\\_Engineering\0215045.03 Wake South 32-N\SURVEY\DRAWINGS\EXHIBITS\0211012-02WakeWPE.dwg



#### NOTES:

- DISTANCES ARE MEASURED PERPENDICULAR TO NEAREST SECTION LINE AND ARE SHOWN ON THE SAME SIDE OF THE SECTION LINE WHERE THE WELL IS LOCATED.
- THIS MAP DOES NOT REPRESENT A MONUMENTED BOUNDARY SURVEY. SIXTEENTH CORNER LOCATIONS ARE COMPUTED, UNLESS OTHERWISE NOTED.
- BOTTOM HOLE LOCATIONS AND HORIZONTAL COMPLETION ZONE PROVIDED BY OTHERS.

#### LEGEND

- ALIQUOT CORNER
- BOTTOM HOLE
- COMPUTED FROM GLO RECORDS
- PROPOSED WELL
- A.C. ALUMINUM CAP
- R.B. RANGE BOX



0 1000

SCALE: 1"= 1000'  
U.S. SURVEY FEET



**LAMP RYNEARSON**  
& ASSOCIATES

4715 Innovation Drive 970.226.0342 | P  
Fort Collins, CO 80525 970.226.0879 | F  
www.LRA-Inc.com

Proposed Well Location Exhibit  
Wake South Directional Project  
WS-Sunrise C1-5-5  
2 of 2

drawn by  
KJW

date  
7/19/2017

cogcc id  
432599

project - task number  
0215045.03

book and page  
MR-4/42

surface - location

SW/4 SE/4 SEC 32 T6N R65W

path/filename P:\\_Engineering\0215045.03 Wake South 32-N\SURVEY\DRAWINGS\EXHIBITS\0211012-02WakeWPE2.dwg