

### LAND SURVEYOR'S CERTIFICATION

LAMP, RYNEARSON & ASSOCIATES, INC., OF FT. COLLINS, COLORADO HAS, IN ACCORDANCE WITH A REQUEST FROM ERIN MATHEWS, DETERMINED THE SURFACE LOCATION OF THE WELL DESIGNATED AS WS-SUNRISE 4-5-5 TO BE 251' FROM THE SOUTH LINE AND 1668' FROM THE EAST LINE OF SECTION 32, TOWNSHIP 6 NORTH, RANGE 65 WEST OF THE 6TH P.M., WELD COUNTY, COLORADO.

### NOTES:

- DISTANCES ARE MEASURED PERPENDICULAR TO NEAREST SECTION LINE AND ARE SHOWN ON THE SAME SIDE OF THE SECTION LINE WHERE THE WELL IS LOCATED.
- THIS MAP DOES NOT REPRESENT A MONUMENTED BOUNDARY SURVEY. SIXTEENTH CORNER LOCATIONS ARE COMPUTED, UNLESS OTHERWISE NOTED.
- BOTTOM HOLE LOCATIONS AND HORIZONTAL COMPLETION ZONE PROVIDED BY OTHERS.

### BASIS OF BEARING:

THE SOUTH LINE OF THE SOUTHEAST QUARTER OF SECTION 32-T6N-R65W BEARS N85°52'57"W BETWEEN THE SOUTH QUARTER CORNER OF SECTION 32 MONUMENTED WITH 3 1/4" A.C. IN R.B. STAMPED "PLS 28259" AND THE SOUTHEAST CORNER OF SECTION 32 MONUMENTED WITH A 2 1/2" A.C. IN R.B. STAMPED "LS 17500" BASED ON THE COLORADO NORTH 0501 STATE PLANE COORDINATE SYSTEM.

ELEVATIONS ARE BASED ON NAVD 88, AS OBSERVED FROM GPS OBSERVATIONS



LAINE A. LANDAU  
 COLORADO PLS 31159

DATE OF SURVEY: 8/19/2010 (SECTION CONTROL)  
 DATE OF SURVEY: 4/19/2017 (WELL LOCATION)



0 1000

SCALE: 1"= 1000'  
 U.S. SURVEY FEET

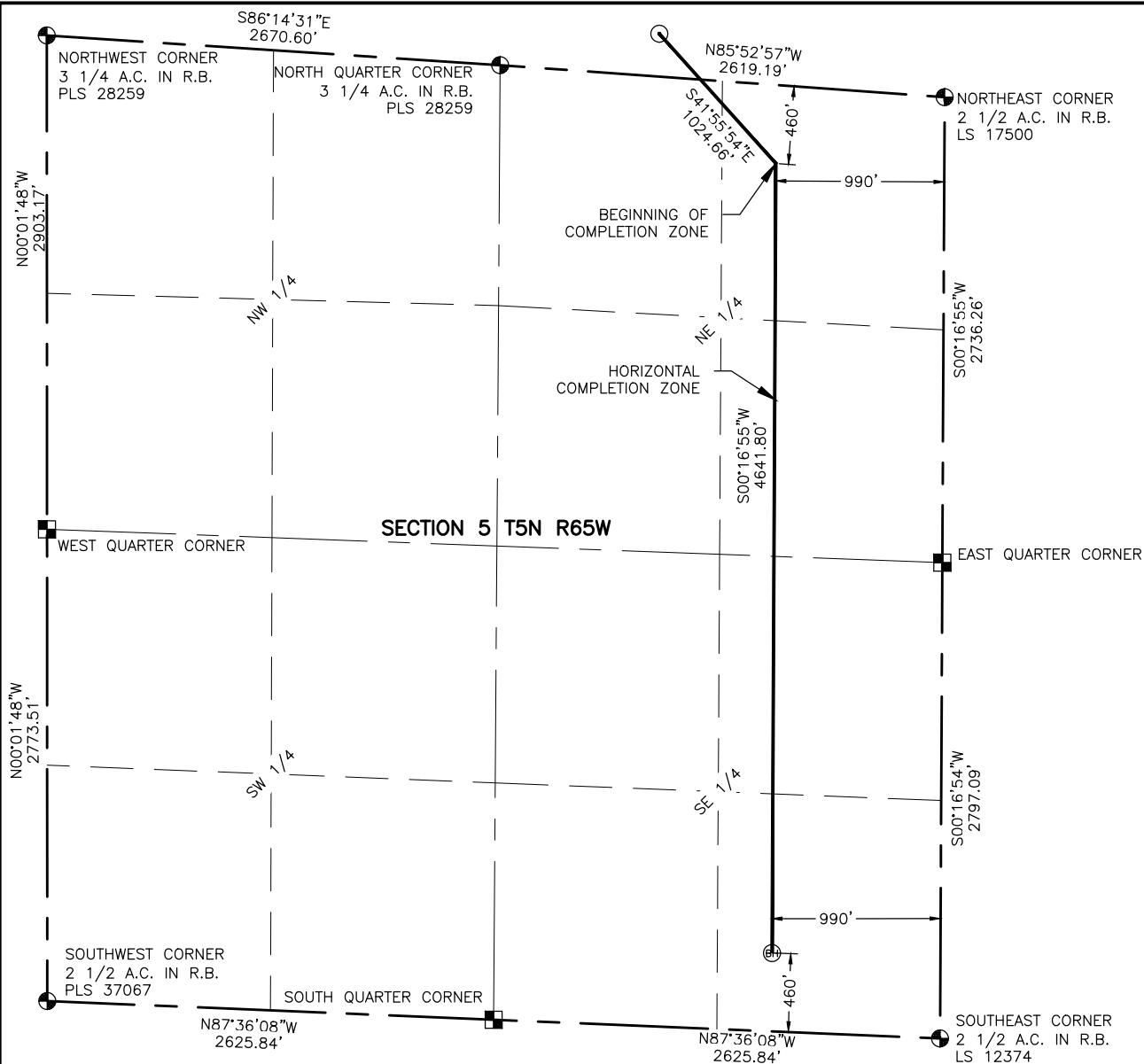


**LAMP RYNEARSON**  
 & ASSOCIATES

4715 Innovation Drive 970.226.0342 | P  
 Fort Collins, CO 80525 970.226.0879 | F  
 www.LRA-Inc.com

Proposed Well Location Exhibit  
 Wake South Directional Project  
 WS-Sunrise 4-5-5  
 1 of 2

drawn by	date	cogcc id	project - task number	book and page	surface - location
KJW	7/19/2017	432599	0215045.03	MR-4/42	SW/4 SE/4 SEC 32 T6N R65W
path/filename P:\_Engineering\0215045.03 Wake South 32-N\SURVEY\DRAWINGS\EXHIBITS\0211012-02WakeWPI.dwg					

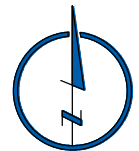


#### NOTES:

1. DISTANCES ARE MEASURED PERPENDICULAR TO NEAREST SECTION LINE AND ARE SHOWN ON THE SAME SIDE OF THE SECTION LINE WHERE THE WELL IS LOCATED.
2. THIS MAP DOES NOT REPRESENT A MONUMENTED BOUNDARY SURVEY. SIXTEENTH CORNER LOCATIONS ARE COMPUTED, UNLESS OTHERWISE NOTED.
3. BOTTOM HOLE LOCATIONS AND HORIZONTAL COMPLETION ZONE PROVIDED BY OTHERS.

#### LEGEND

- ALIQUOT CORNER
- BOTTOM HOLE
- COMPUTED FROM GLO RECORDS
- PROPOSED WELL
- A.C. ALUMINUM CAP
- R.B. RANGE BOX



0 1000

SCALE: 1"= 1000'  
U.S. SURVEY FEET



**LAMP RYNEARSON**  
& ASSOCIATES

4715 Innovation Drive 970.226.0342 | P  
Fort Collins, CO 80525 970.226.0879 | F  
www.LRA-Inc.com

Proposed Well Location Exhibit  
Wake South Directional Project  
WS-Sunrise 4-5-5  
2 of 2

drawn by  
KJW

date  
7/19/2017

cogcc id  
432599

project - task number  
0215045.03

book and page  
MR-4/42

surface - location  
SW/4 SE/4 SEC 32 T6N R65W

path/filename P:\\_Engineering\0215045.03 Wake South 32-N\SURVEY\DRAWINGS\EXHIBITS\0211012-02WakeWPI2.dwg