



October 13, 2017

Mr. Matthew Lepore, Director
Colorado Oil & Gas Conservation Commission
1120 Lincoln Street, Ste. 801
Denver, Colorado 80203

RE: Rule 318.A.e.
WS-Sunrise 1-5-5
WS-Sunrise 2-5-5
WS-Sunrise C1-5-5
WS-Sunrise 4-5-5
WS-Sunrise 5-5-5

Surface Location: SWSE, Section 32, Township 6 North, Range 65 West, Weld County, CO

Dear Mr. Lepore,

Extraction Oil and Gas is planning to drill the captioned horizontal wells in accordance with the provision of COGCC Rule 318A.e.

The proposed wellbore spacing unit consists of:

Sec. 5-5N-65W: E/2

The spacing unit is a 320-acre wellbore spacing unit for the Niobrara and Codell formations.

Extraction Oil and Gas hereby certifies to the Director that all Owners within the proposed spacing unit above were notified and 30 days have passed without objection.

If you have any questions or issues regarding this permit, please contact Alyssa Andrews at (720) 481-2379.

Sincerely,

Alyssa Andrews
Regulatory Analyst
Extraction Oil & Gas, Inc.

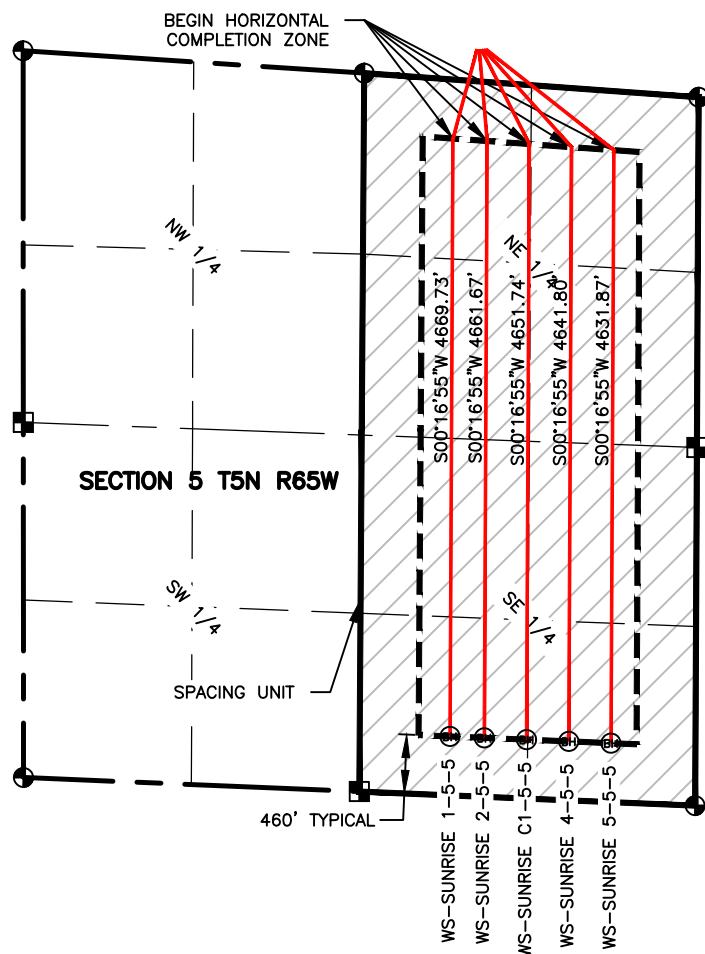
P:\Engineering\0215045.03 Wake South 32--N\DRAWINGS\EXHIBITS\0211012--02PSUE-- SUNRISE.dwg, 7/20/2017 7:56:40 AM, KELVIN WIESE, LAMP RYNEARSON & ASSOCIATES

NAME: SUNRISE
SPACING UNIT: E/2 SEC 5, T5N, R65W;
UNIT ACREAGE: 320



0 1500

SCALE: 1" = 1500'
U.S. SURVEY FEET



| WELL NAME | SURFACE LOCATION | | | | BEGIN HORIZONTAL COMPLETION ZONE | | | | END HORIZONTAL COMPLETION ZONE | | | |
|-------------------|------------------|------|-------|------|----------------------------------|------|-------|------|--------------------------------|------|-------|------|
| | DIST. | DIR. | DIST. | DIR. | DIST. | DIR. | DIST. | DIR. | DIST. | DIR. | DIST. | DIR. |
| WS-SUNRISE 1-5-5 | 248' | FSL | 1722' | FEL | 460' | FNL | 1918' | FEL | 460' | FSL | 1918' | FEL |
| WS-SUNRISE 2-5-5 | 249' | FSL | 1704' | FEL | 460' | FNL | 1650' | FEL | 460' | FSL | 1650' | FEL |
| WS-SUNRISE C1-5-5 | 250' | FSL | 1686' | FEL | 460' | FNL | 1320' | FEL | 460' | FSL | 1320' | FEL |
| WS-SUNRISE 4-5-5 | 251' | FSL | 1668' | FEL | 460' | FNL | 990' | FEL | 460' | FSL | 990' | FEL |
| WS-SUNRISE 5-5-5 | 253' | FSL | 1650' | FEL | 460' | FNL | 660' | FEL | 460' | FSL | 660' | FEL |



LAMP RYNEARSON
& ASSOCIATES

4715 Innovation Drive 970.226.0342 | P
Fort Collins, CO 80525 970.226.0879 | F
www.LRA-Inc.com

Proposed Well Location Exhibit
Wake South Directional Project
Sunrise

LEGEND

- ALLOT CORNER
- BOTTOM HOLE
- COMPUTED FROM GLO RECORDS
- SECTION LINE
- QUARTER SECTION LINE
- SIXTEENTH LINE
- UNION COLONY CORNER
- COMPUTED ALLOT CORNER FROM MONUMENT ACCESSORIES

drawn by
JUM

date
7/20/17

cogcc id
432599

project - task number
0215045.03

book and page

surface - location
SW/4 SE/4 SEC 32 T6N R65W

path/filename P:\Engineering\0215045.03 Wake South 32--N\DRAWINGS\EXHIBITS\0211012--02PSUE-- SUNRISE.dwg