



Gamma Ray

"These interpretations and analyses ("Interpretations") are opinions provided by Baker Hughes Oilfield Operations, Inc ("Baker Hughes"), based upon industry practice, empirical relationships, assumptions and measurements, (many of which may be provided by the customer). The Interpretations are not infallible and may be subject to different opinions. Thus, Baker Hughes does not warrant their accuracy, correctness, or completeness, or that the customer's and/or any third party's reliance on such Interpretations will accomplish any particular results. The customer assumes full responsibility for the use of the Interpretations and for decisions based thereon and the customer agrees to release, defend and indemnify Baker Hughes, its parent, subsidiaries and affiliated or related entities, and subcontractors, together with its and their officers, directors, employees, agents and invitees against, any and all claims, losses, damages, or expenses sustained by the customer or any third party arising out of reliance upon or use of the Interpretations, without regard to the cause(s) thereof, including without limitation any form of negligence on the part of Baker Hughes. Unless other contract terms have been agreed to by the parties, each party's liabilities and obligations shall be governed by Baker Hughes Incorporated's Worldwide Terms and Conditions."

Log Run Summary

Run No	Bit Run No.	Bit Size (in)	Bit Type	Bit Gauge Length (in)	Assembly Type	Logged Interval		Bit Depth Interval		Date / Time		Circ. Hours (h)
						Top	Bottom	From	To	Start Logging	End Logging	
						(ft)	(ft)	(ft)	(ft)			
1	1	8.500	PDC	2.00	AutoTrak Curve	1917.10	13976.67	1930.00	13989.57	2017-08-20 04:18	2017-08-22 05:20	43.36

Crew

Name		Arrive Wellsite	Depart Wellsite	Name		Arrive Wellsite	Depart Wellsite	Name		Arrive Wellsite	Depart Wellsite
Emi Iyalla		2017-08-18	2017-08-22	Mark Herpin		2017-08-21	2017-08-22				

Mud Properties Record

Date / Time	Run No.	Measured Depth (ft)	Mud Type	Density (ppg)	Viscosity (cP)	pH	Fluid Loss (cm3)	Oil / Water	Source	Total Chlorides (ppm)	K+ (%)
2017-08-20 03:00	1	1930.00	Oil Based Mud	9.3	12	N/A	21.2	80/20	Active Pit	26500	0.00
2017-08-20 13:00	1	3799.00	Oil Based Mud	9.1	10	N/A	16.4	80/20	Active Pit	25000	0.00
2017-08-21 03:00	1	7272.00	Oil Based Mud	9.0	9	N/A	15.6	82.4/17.6	Active Pit	25000	0.00
2017-08-21 13:00	1	9685.00	Oil Based Mud	9.3	11	N/A	16.0	83.1/16.9	Active Pit	25000	0.00
2017-08-22 03:00	1	13321.00	Oil Based Mud	9.4	11	N/A	18.0	84.1/15.9	Active Pit	22500	0.00

Equipment and Service Data

Run No.	Tool	Serial Number	Measurement	Sensor Offset (ft)	Bit Offset (ft)	Max O.D. (in)	Min I.D. (in)
1	ATC_SU	12194650	Near Bit Inclination	5.93	6.73	7.000	4.330
1	ATC_SU	12194650	Near Bit VSS	5.93	6.73	7.000	4.330
1	ATC_MWD	12284825	Gamma (single)	2.75	12.90	7.000	3.250
1	ATC_MWD	12284825	Directional (mag)	12.27	22.42	7.000	3.250

Service and Tool Mnemonics

Mnemonic	Name	Description
ATC_SU	ATC_SU	Auto Trak Curve Steering Unit
ATC_MWD	ATC_MWD	Auto Trak Curve MWD
ATC_LCPM	ATC_LCPM	Auto Trak Curve LCPM


Comments

1	Depth measurements were obtained from a depth control system not supplied or operated by Baker Hughes. Due to the lack of control by Baker Hughes, depth calibrations and measurements could not be independently verified.
2	Baker Hughes LWD run 1 utilized a 6.75 inch NaviGamma (Directional and Gamma Ray) services behind a 8.5 inch bit and rotary steerable assembly from 1930 to 13990 feet MD (1930 to 6460 feet TVD).

Remarks				
Number	Measured Depth (ft)	Hole Section (in)	Run No.	Remark

Curve Mnemonics

Presented Curves	Description	Units
ROPA	Depth Averaged ROP 3 ft Average	ft/h
WOBA	Weight On Bit, Average 1 ft Average	klb
GRAM	OnTrak - Gamma Ray - Apparent - Memory 0.5 ft Average	API
TCDM	Downhole Temperature	degF



Company

Well

Interval

Created

Noble Energy

Wells Ranch BB11-643

Date From: 2017-08-20 02:30:00

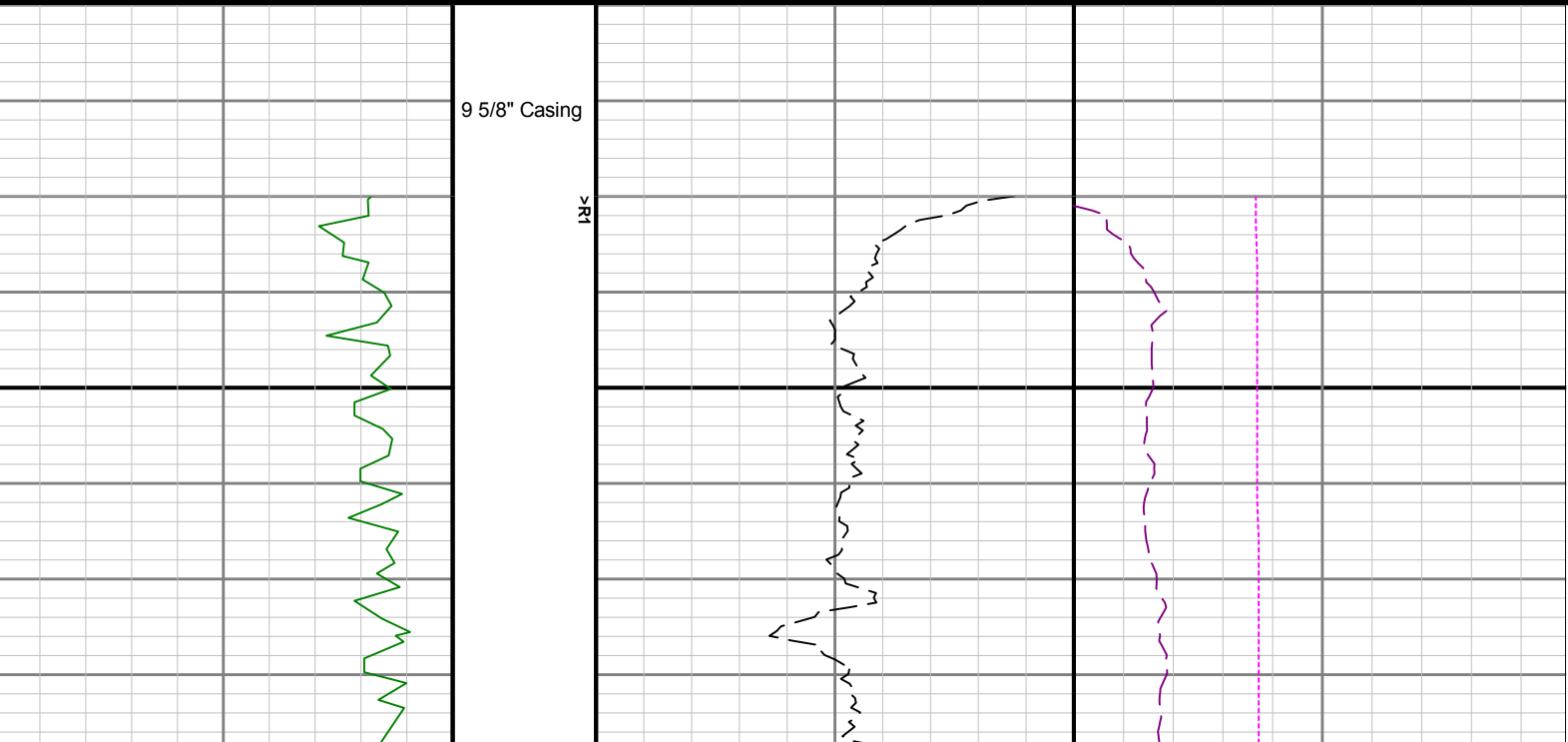
Date To: 2017-08-22 07:30:00

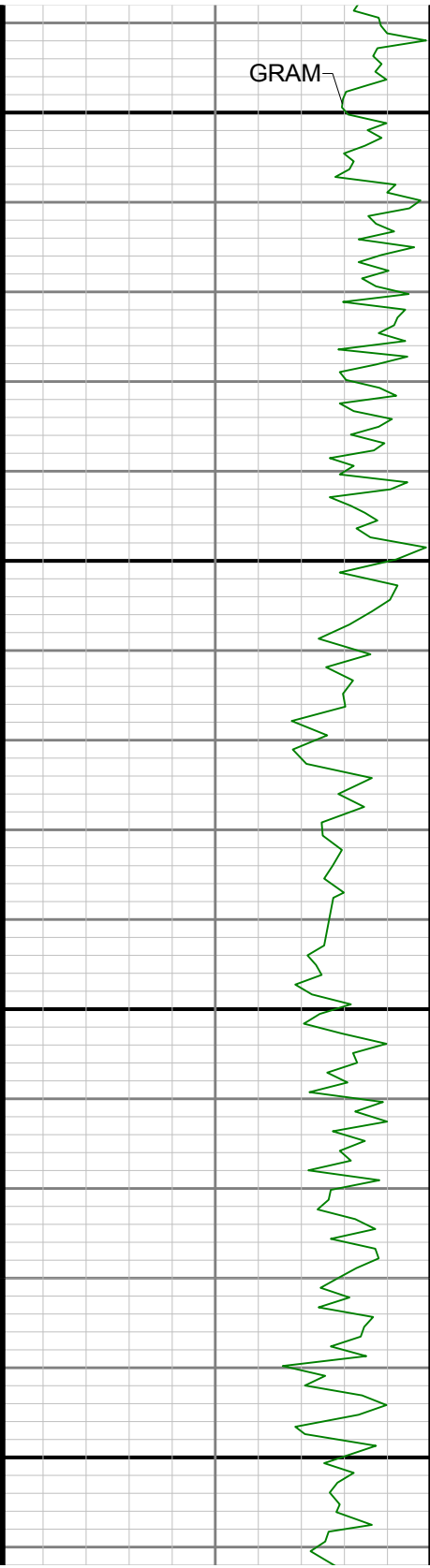
2017-08-22 15:03:34

Top: 1930.00

Bottom: 6490.00

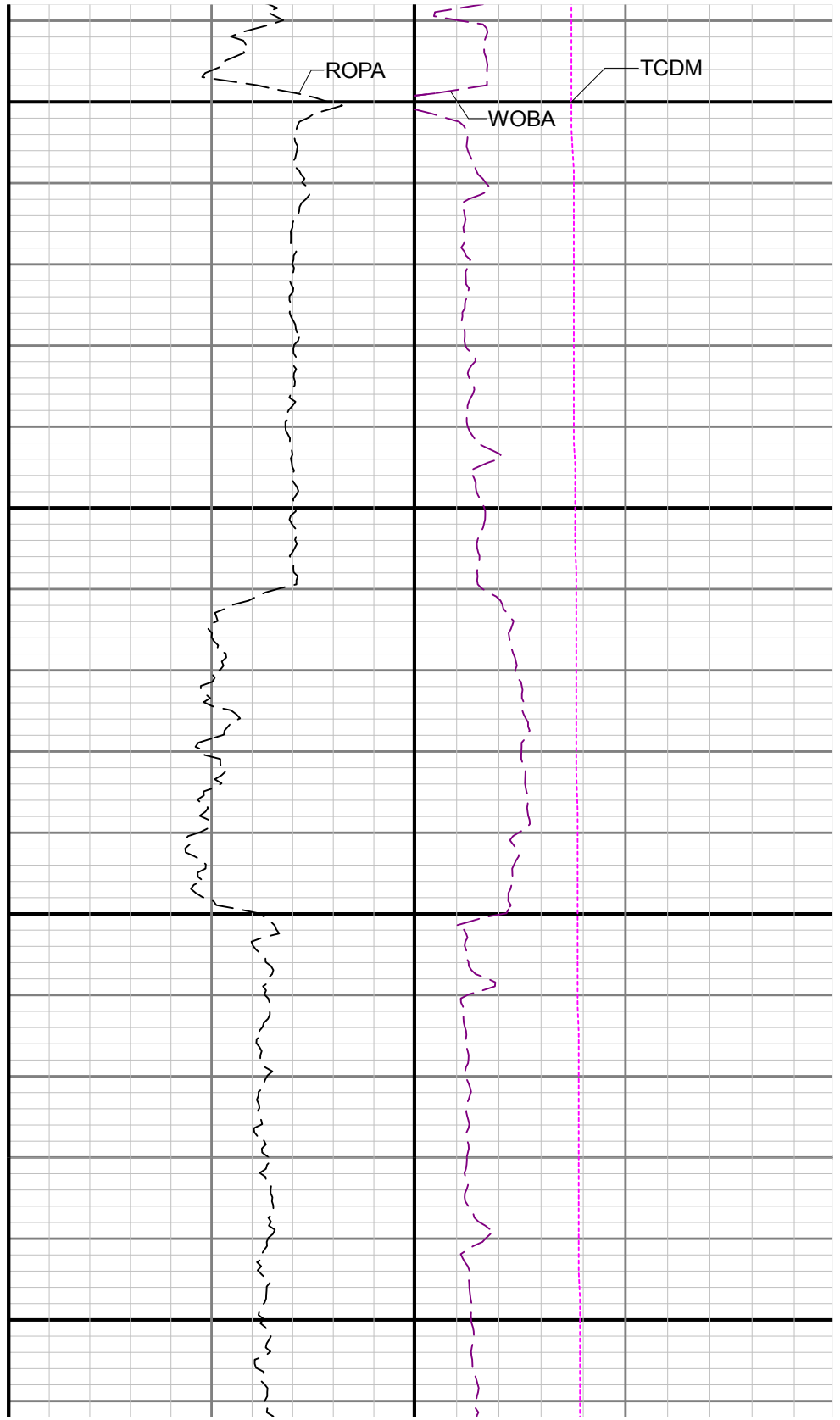
Gamma Ray - Apparent 0.5 ft Average GRAM	TVD 1:240 feet	Depth Averaged ROP 3 ft Average ROPA	Weight On Bit, Average 1 ft Average WOBA
0 150		1000 0	0 50
API		ft/h	klb
			Downhole Temperature TCDM
			0 300
			degF





2000

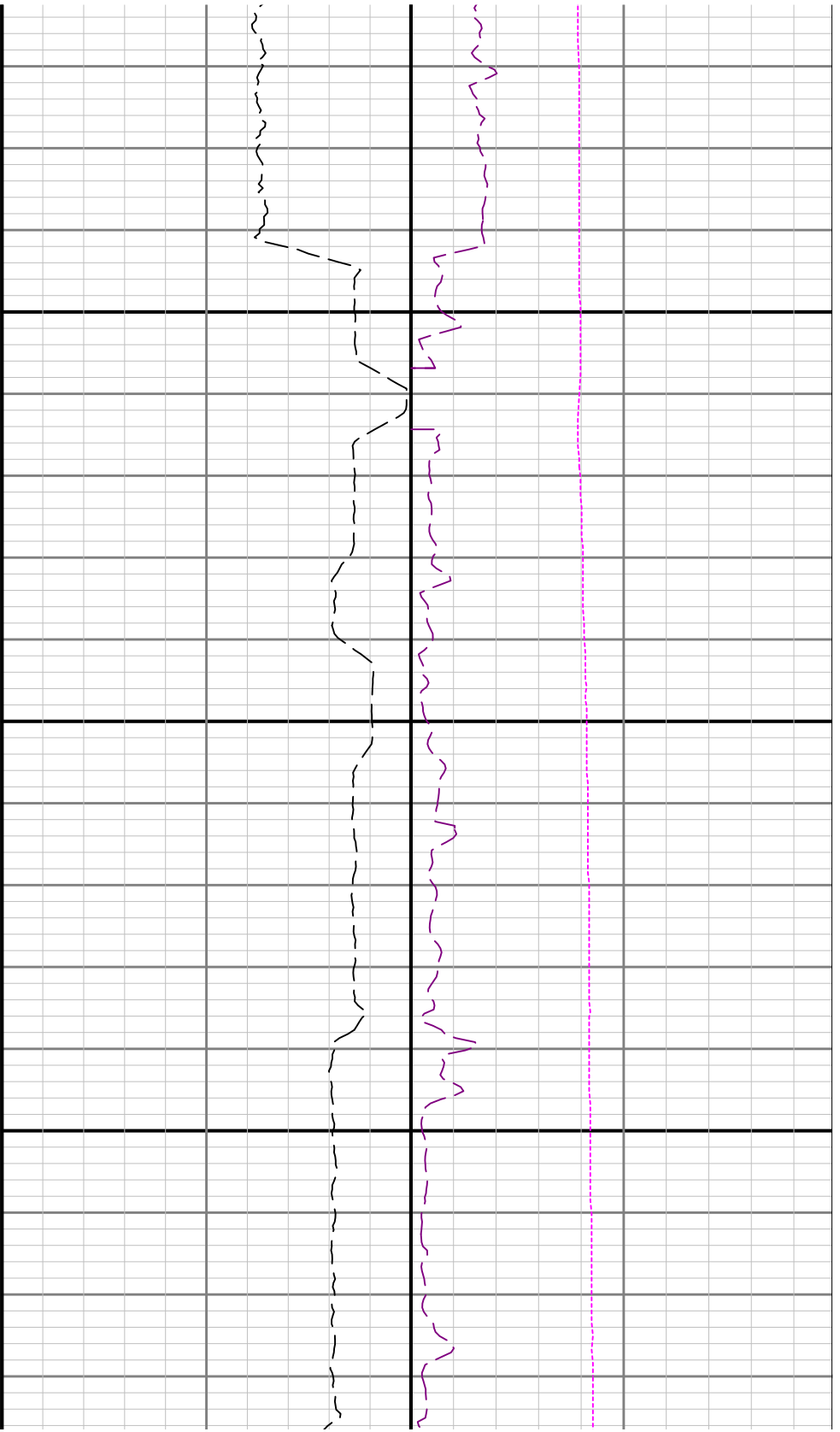
2100



ROPA

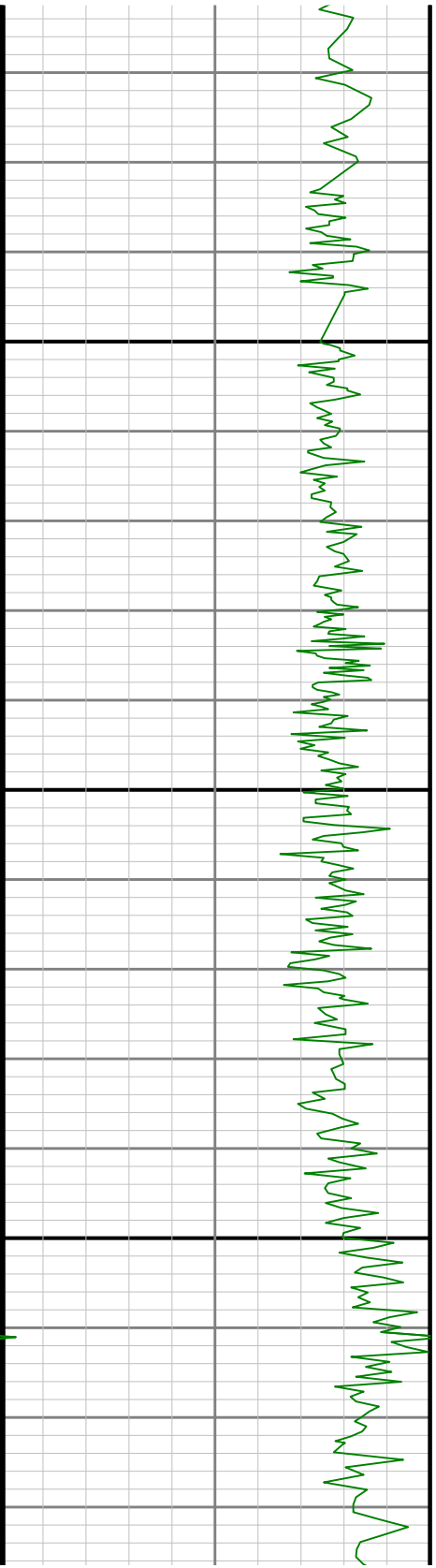
WOBA

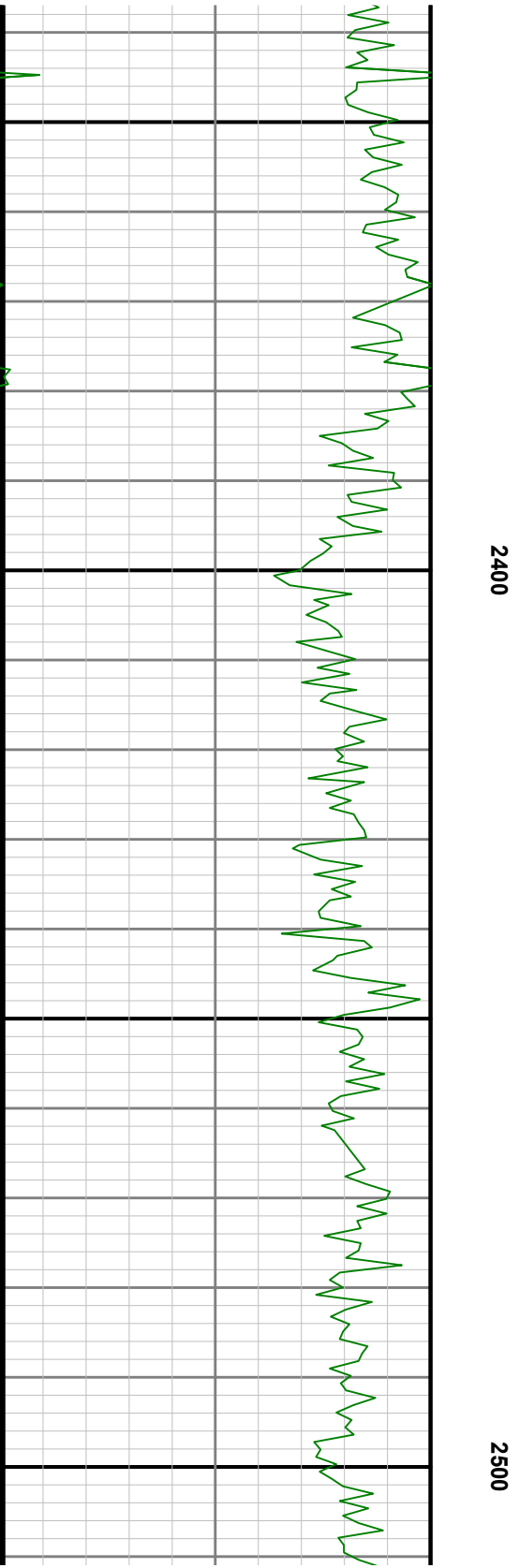
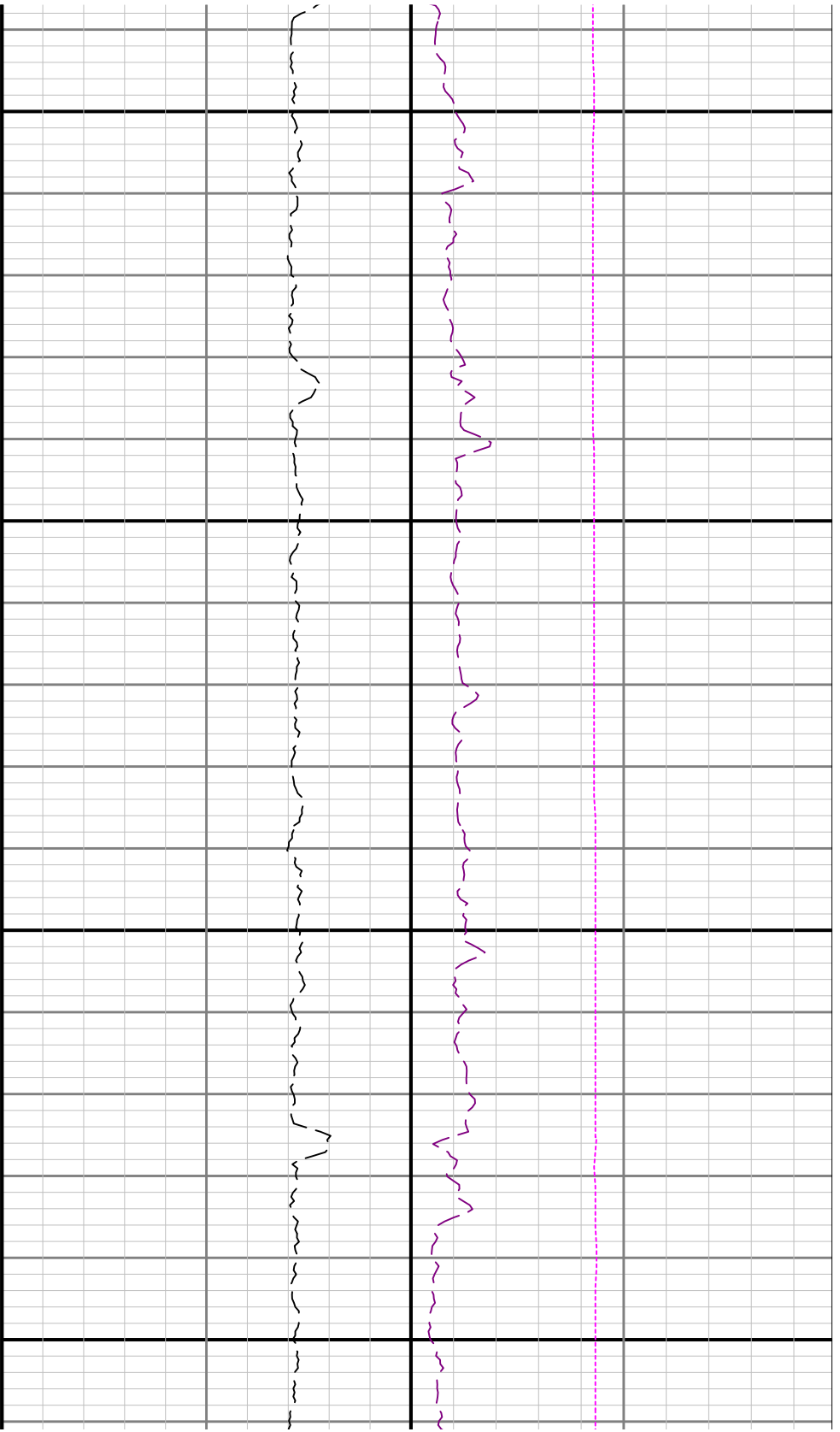
TCDM

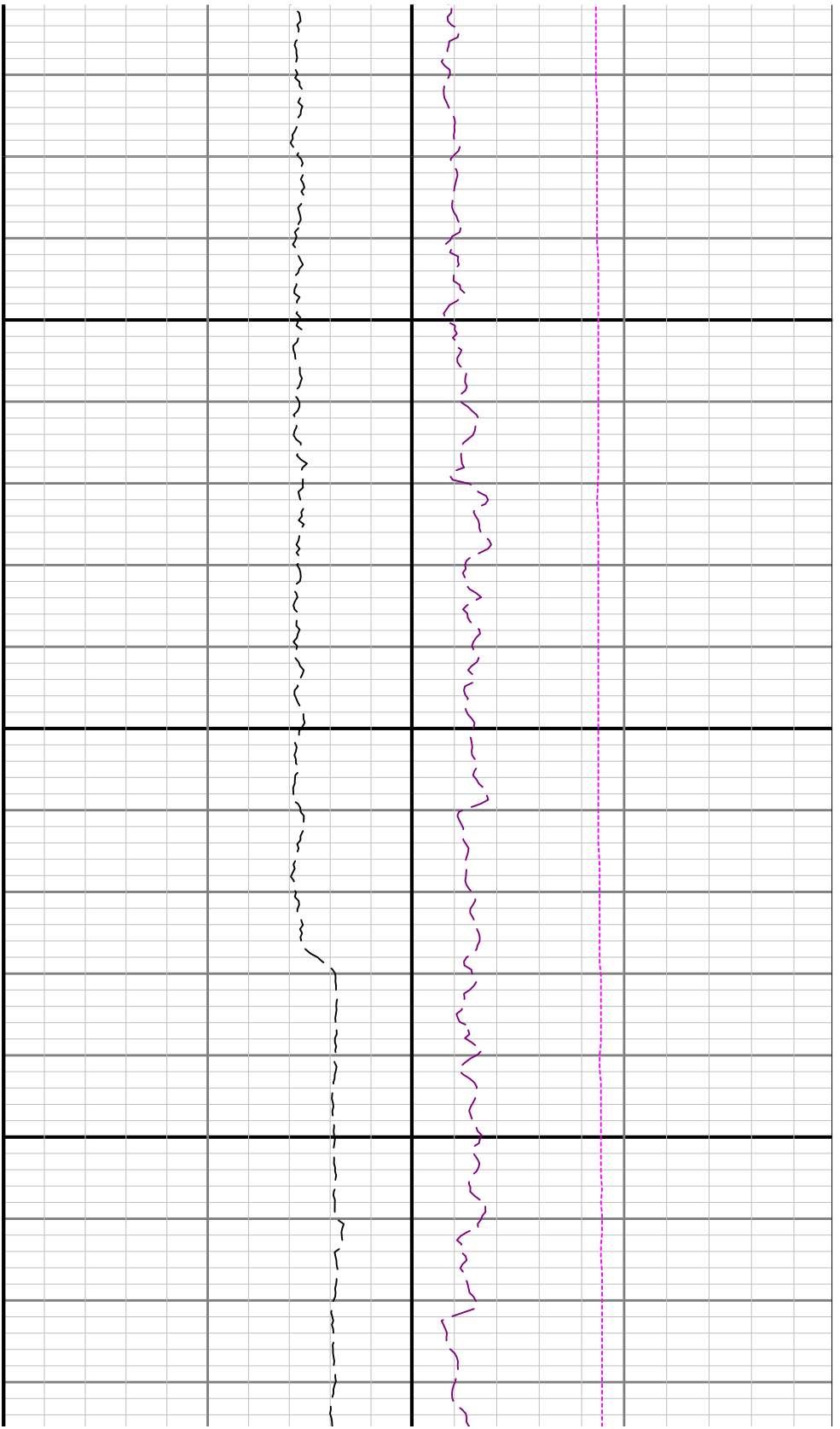


2200

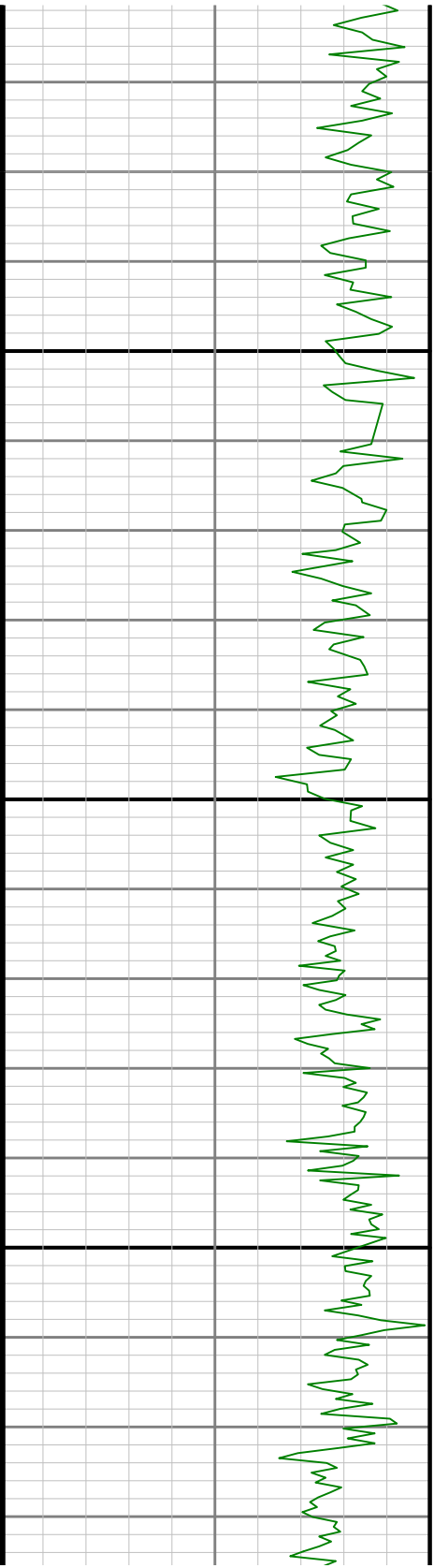
2300

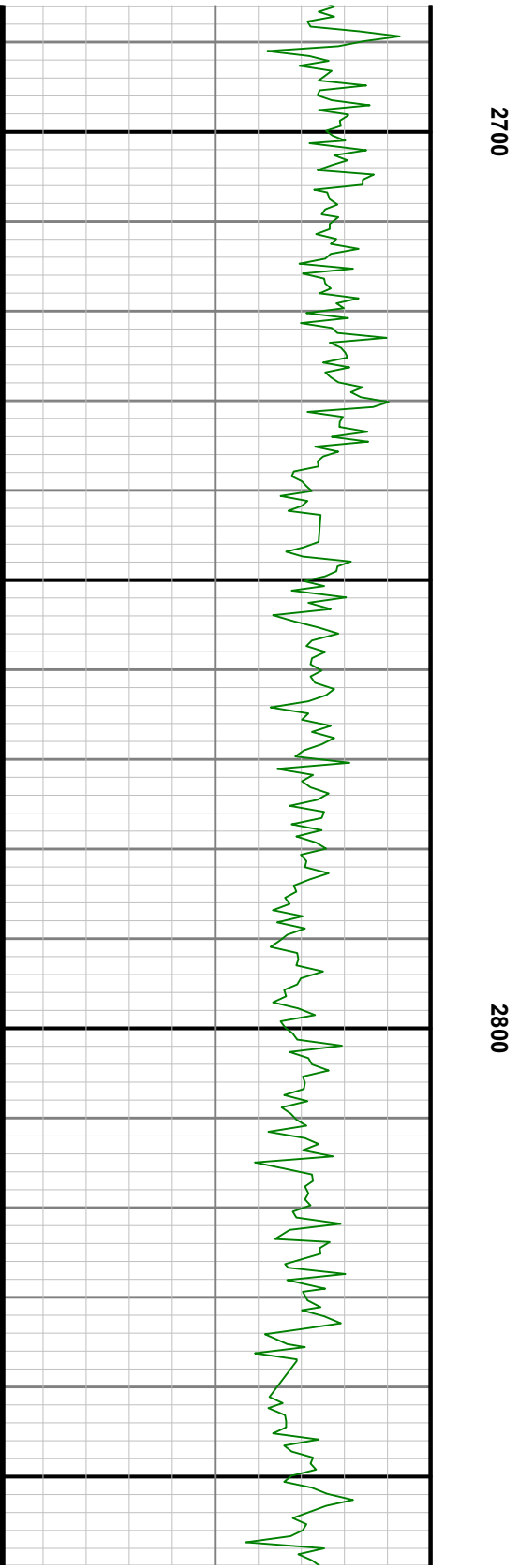
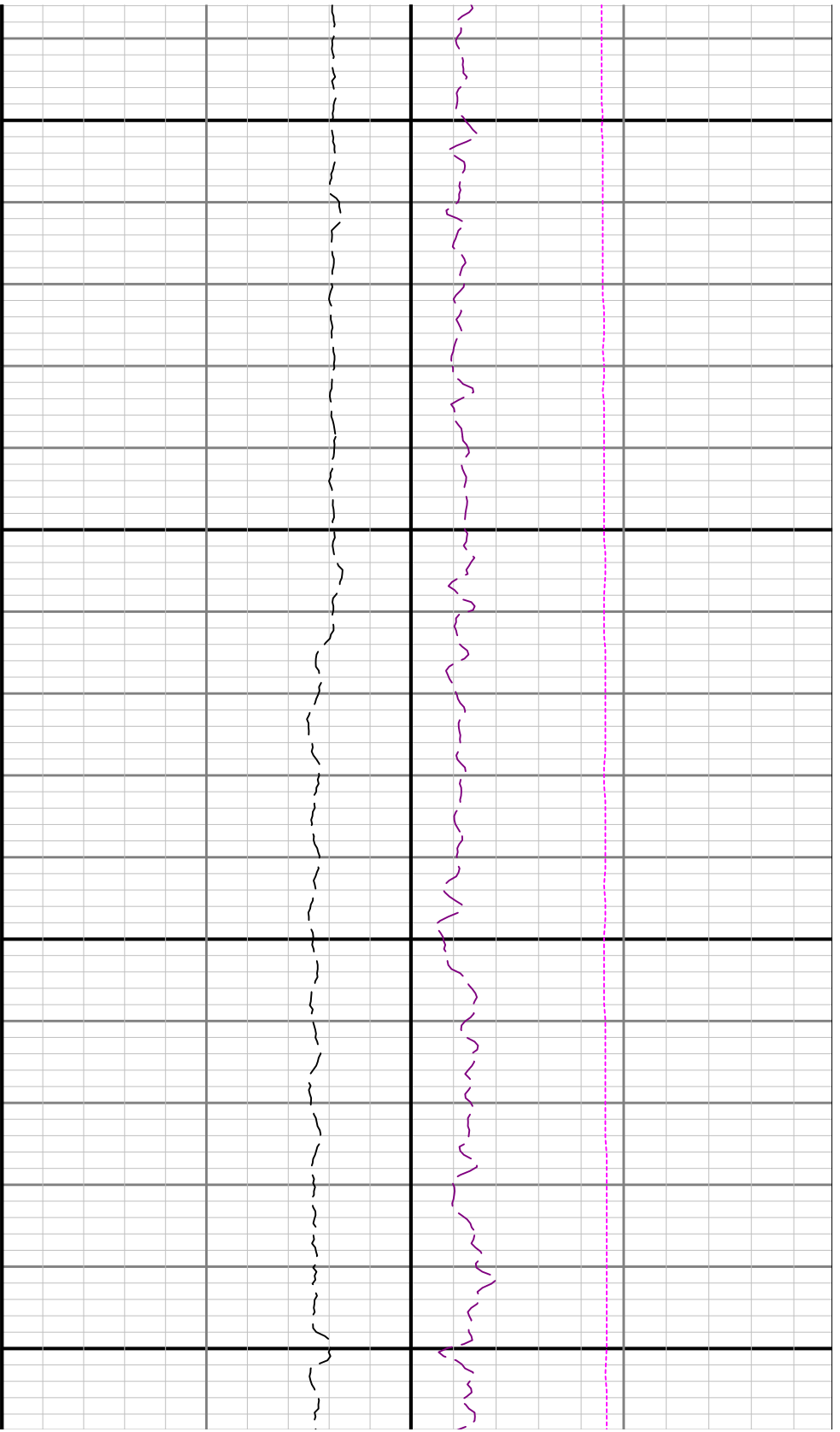


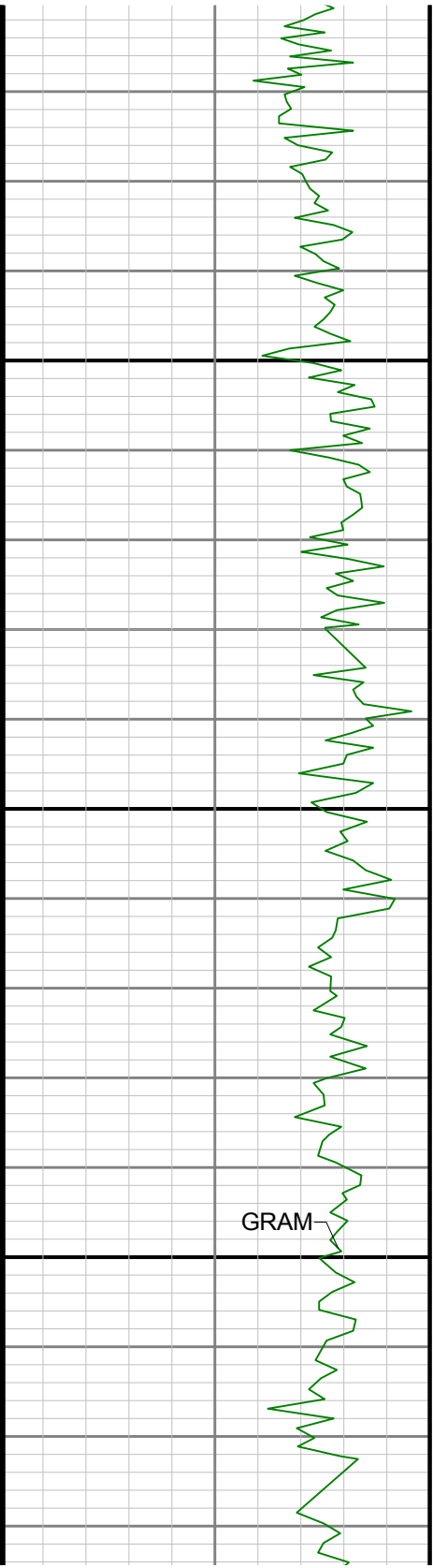




2600



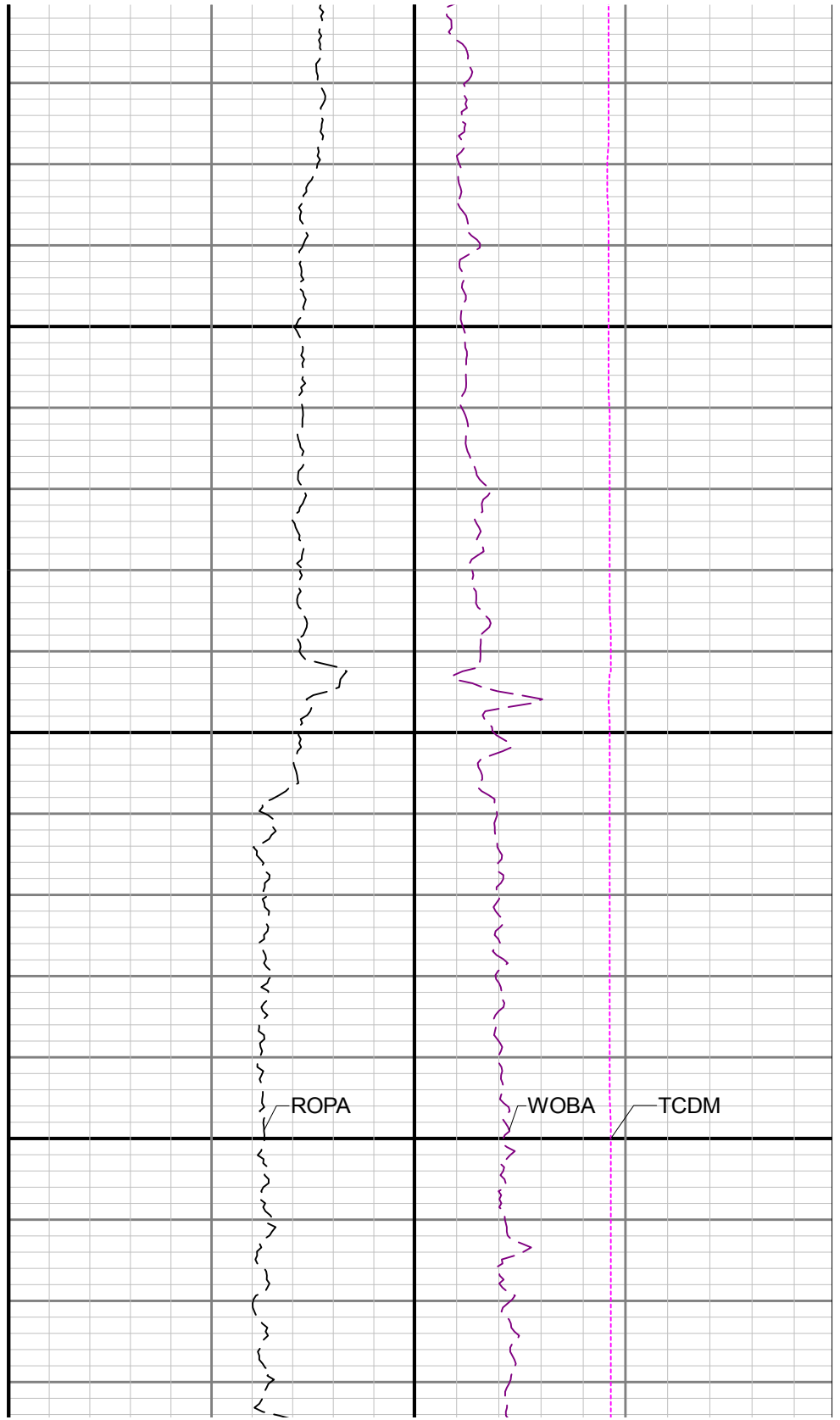




2900

3000

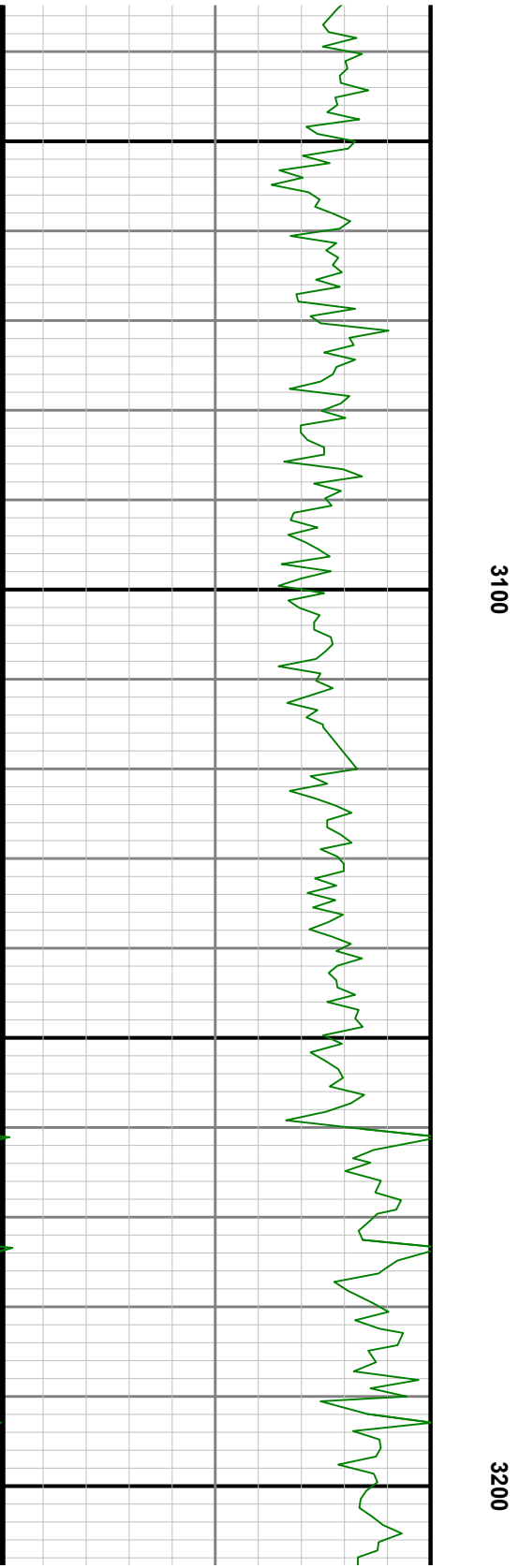
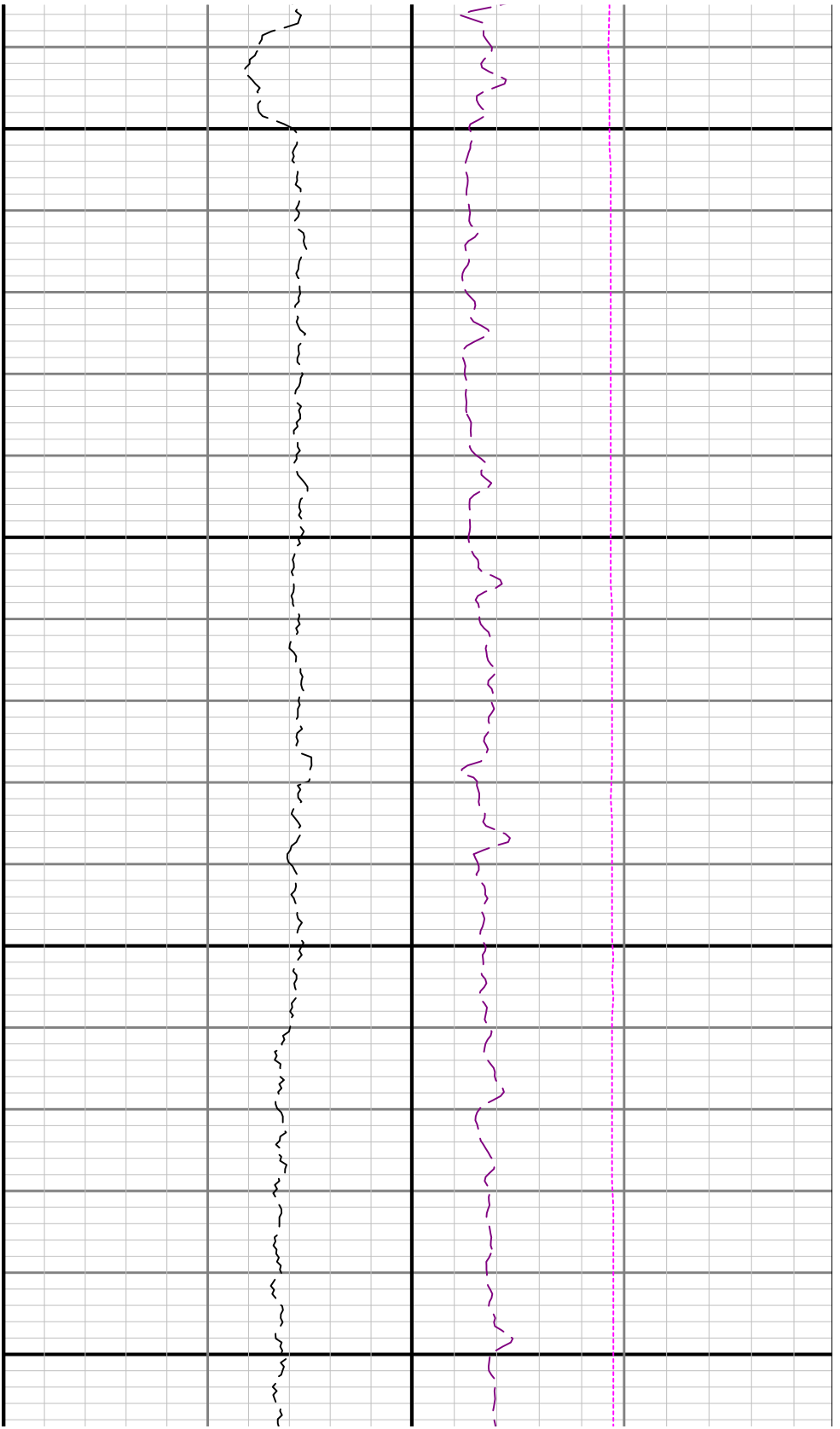
GRAM

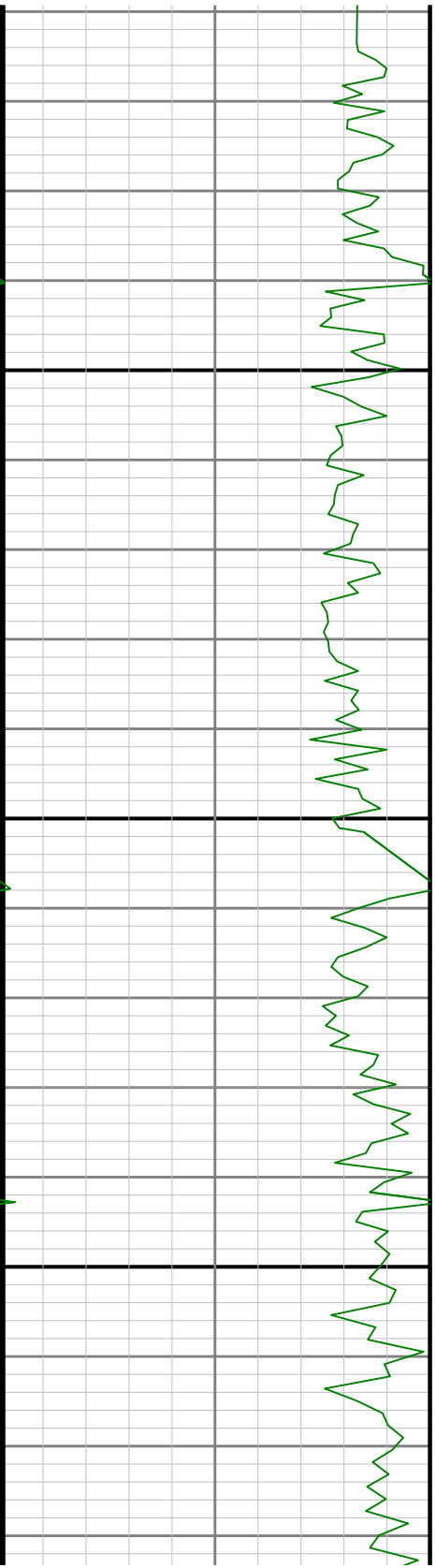
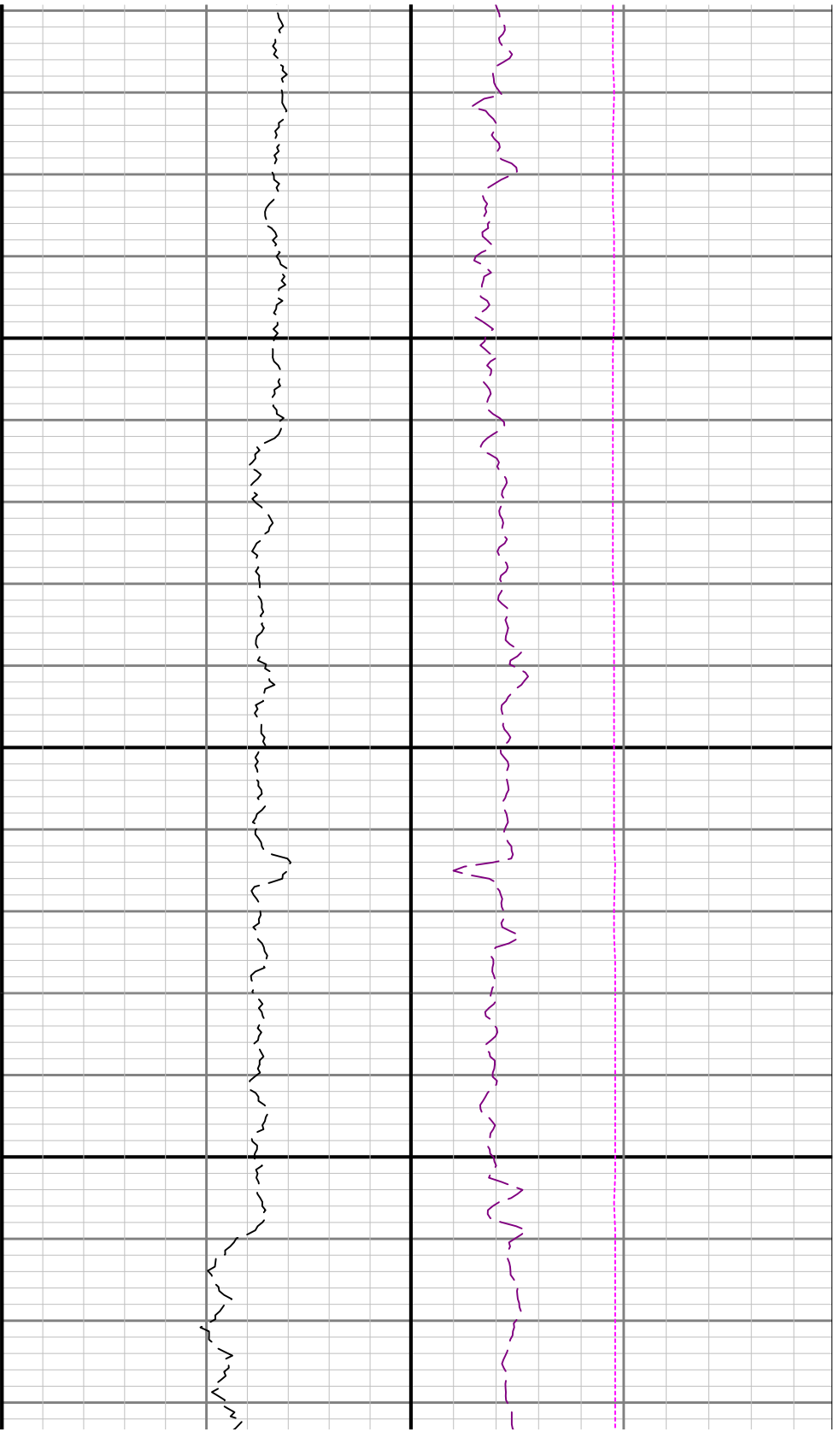


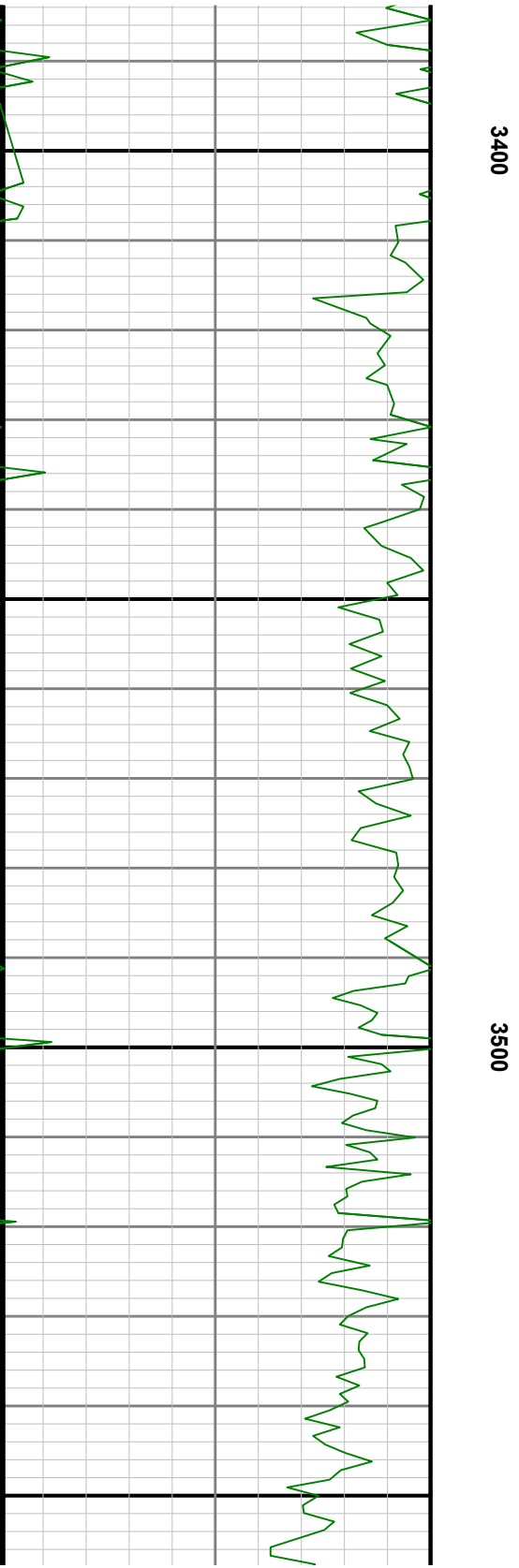
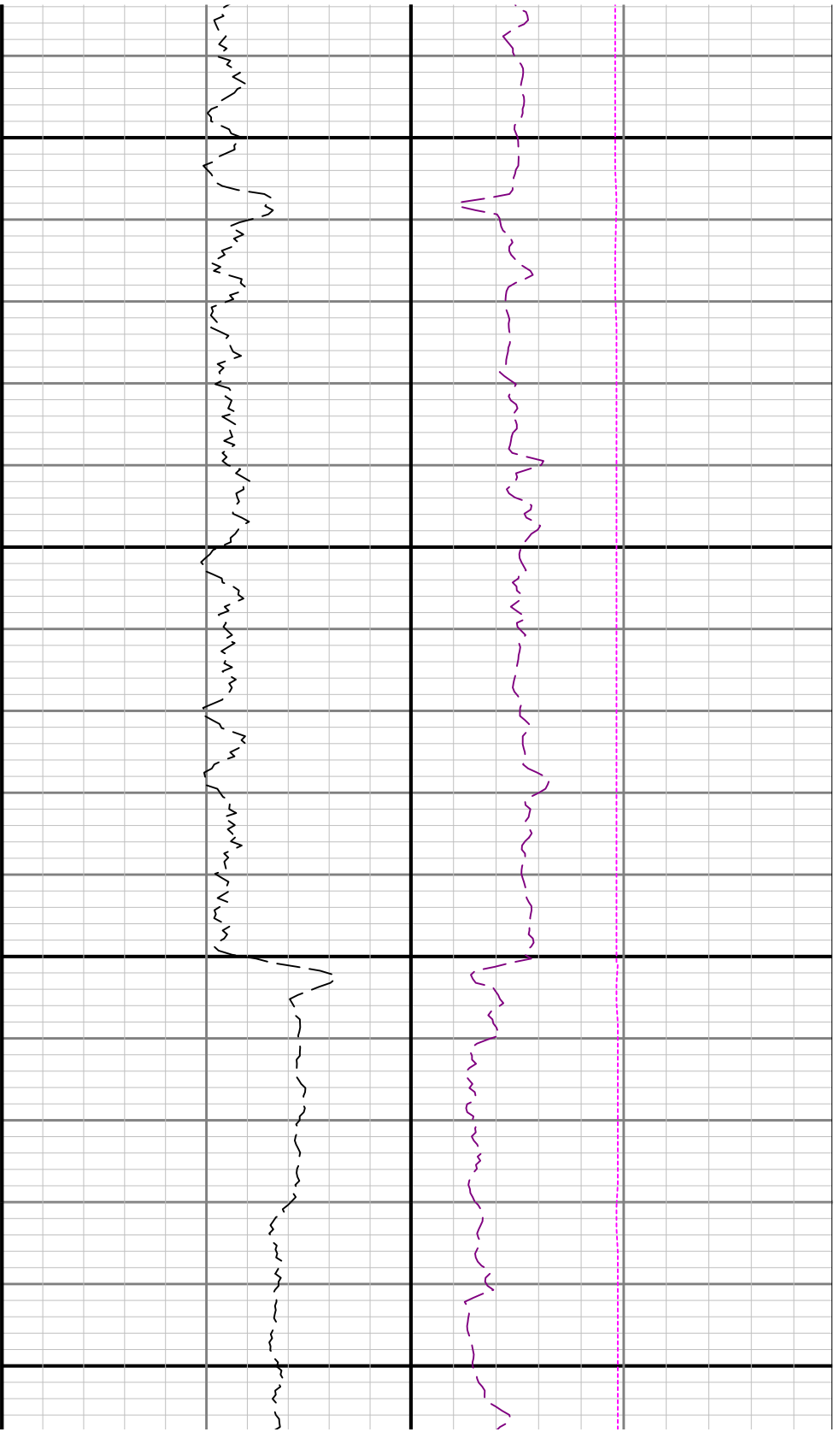
ROPA

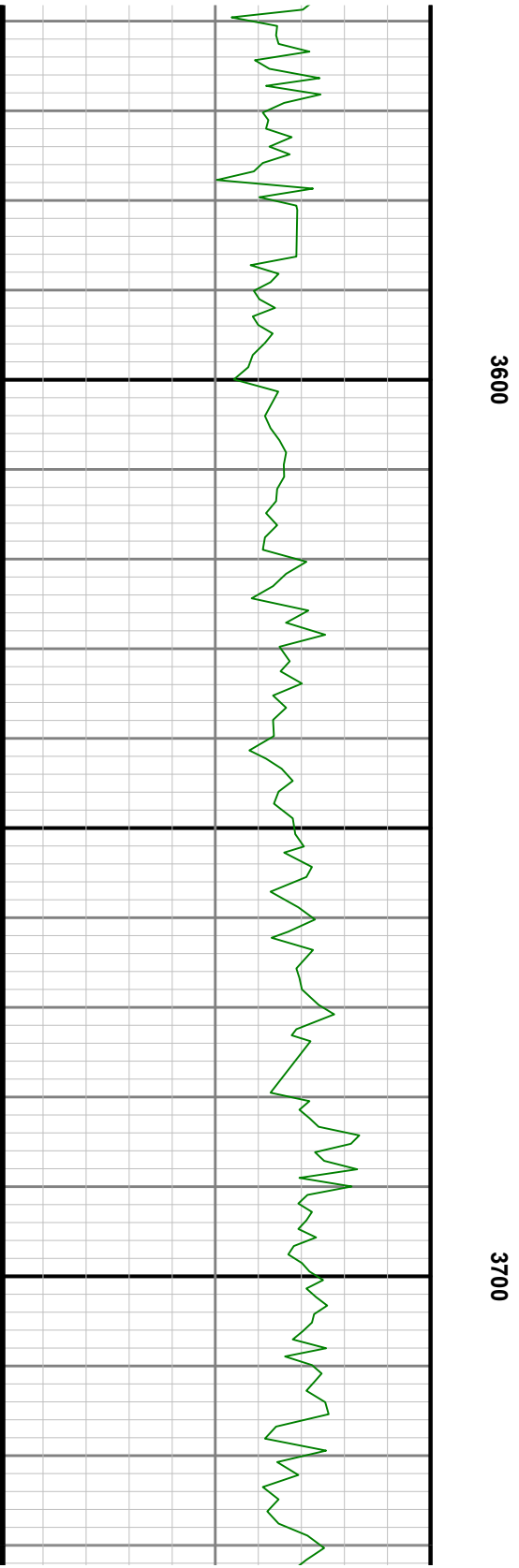
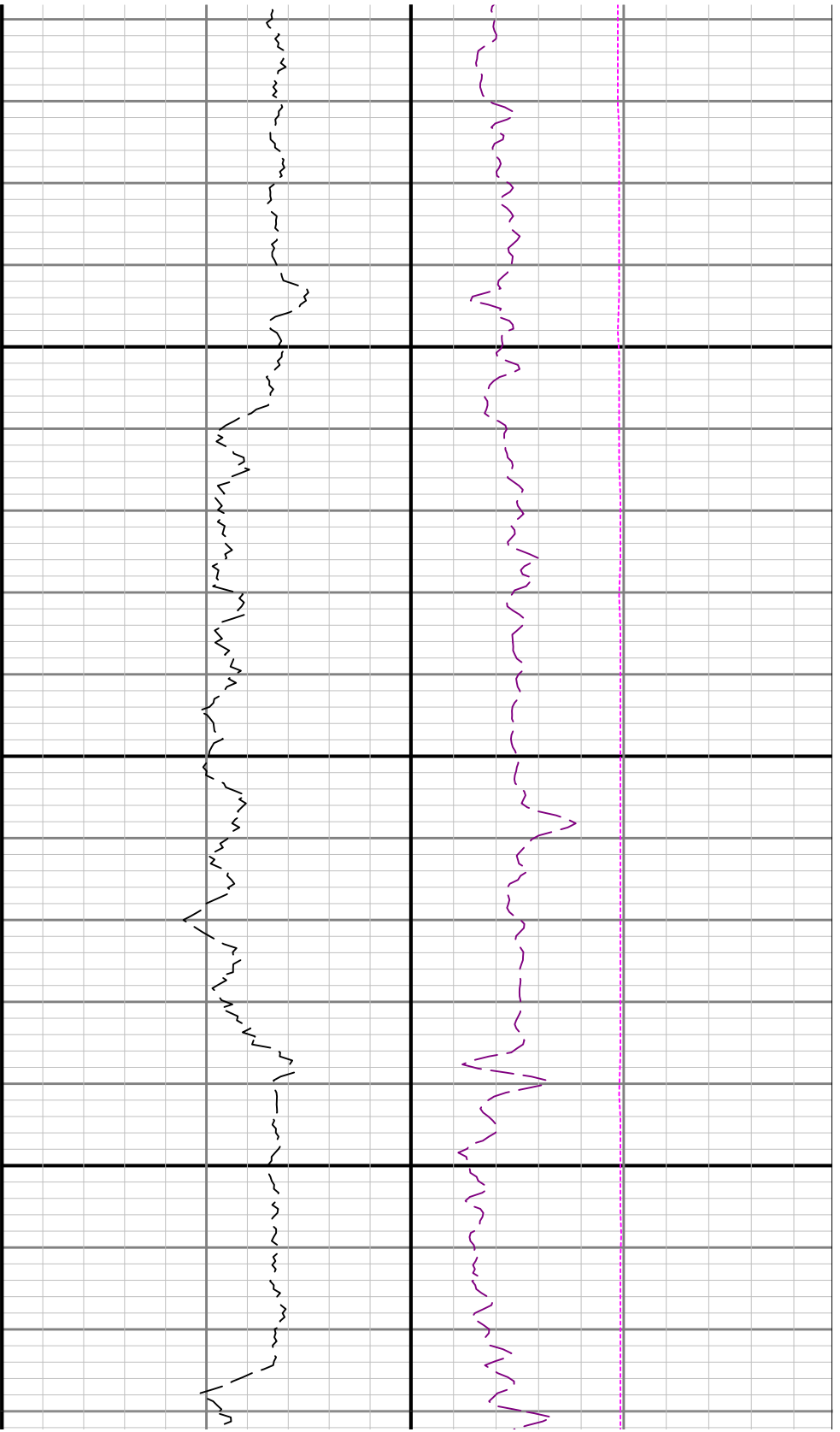
WOBA

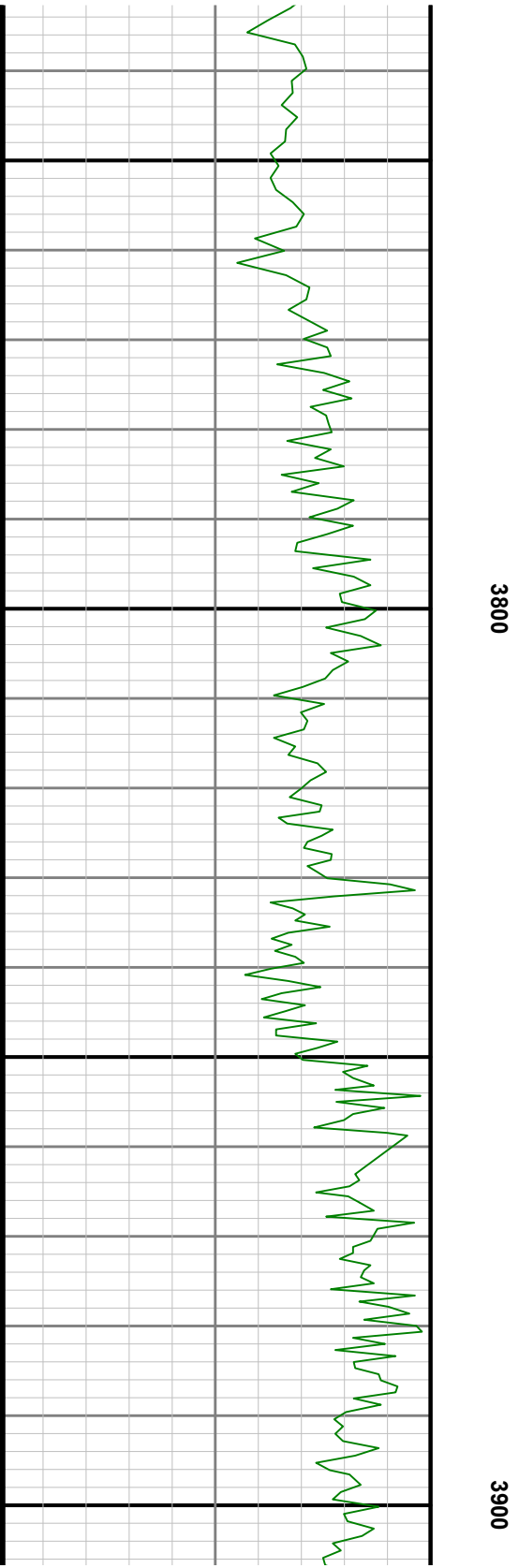
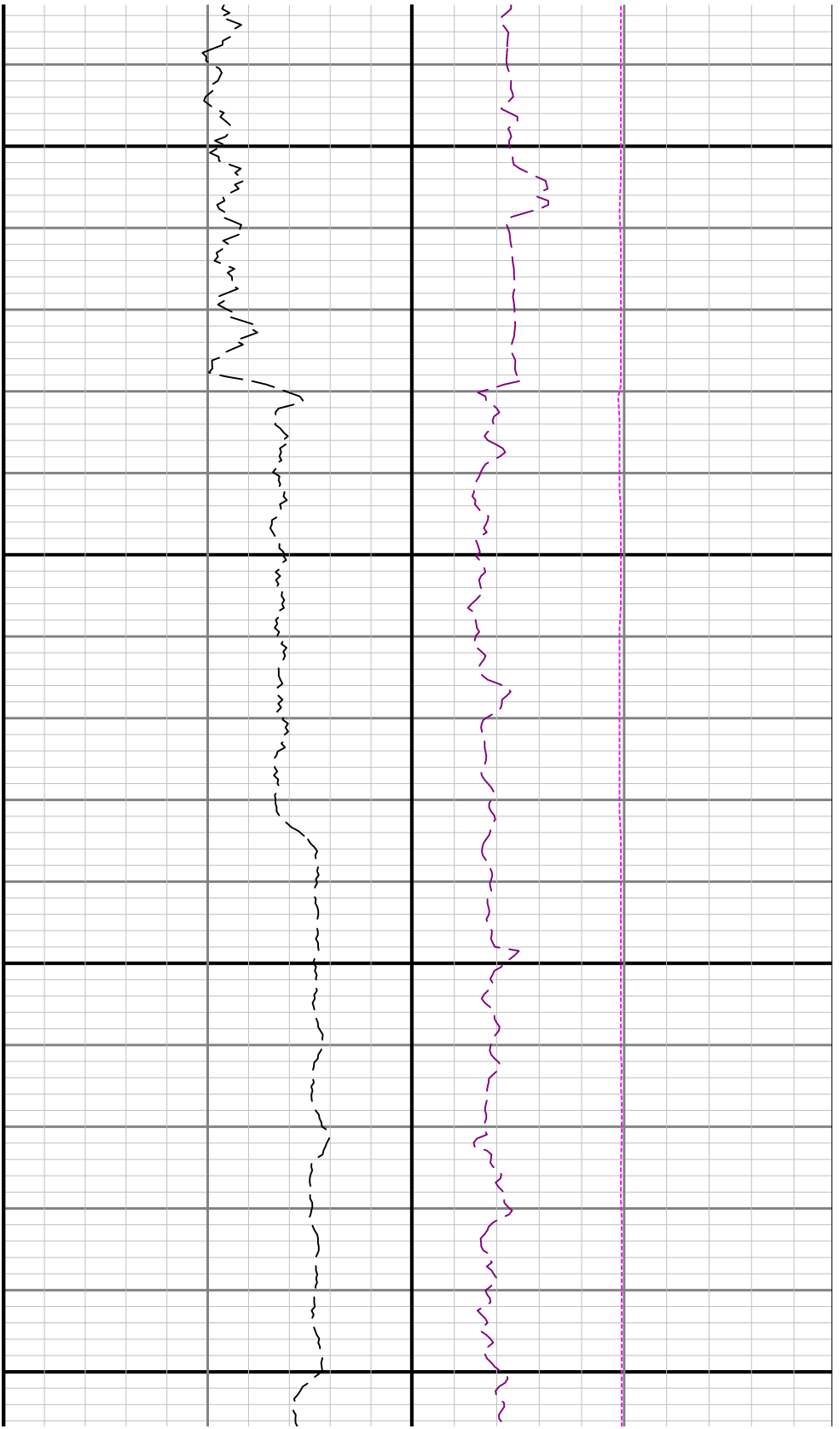
TCDM

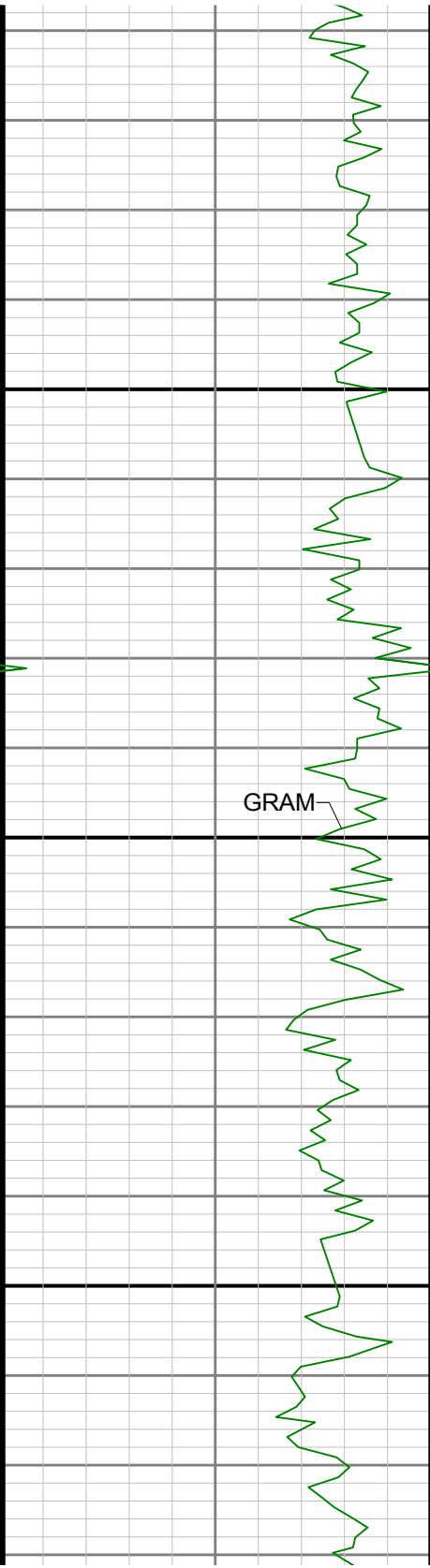




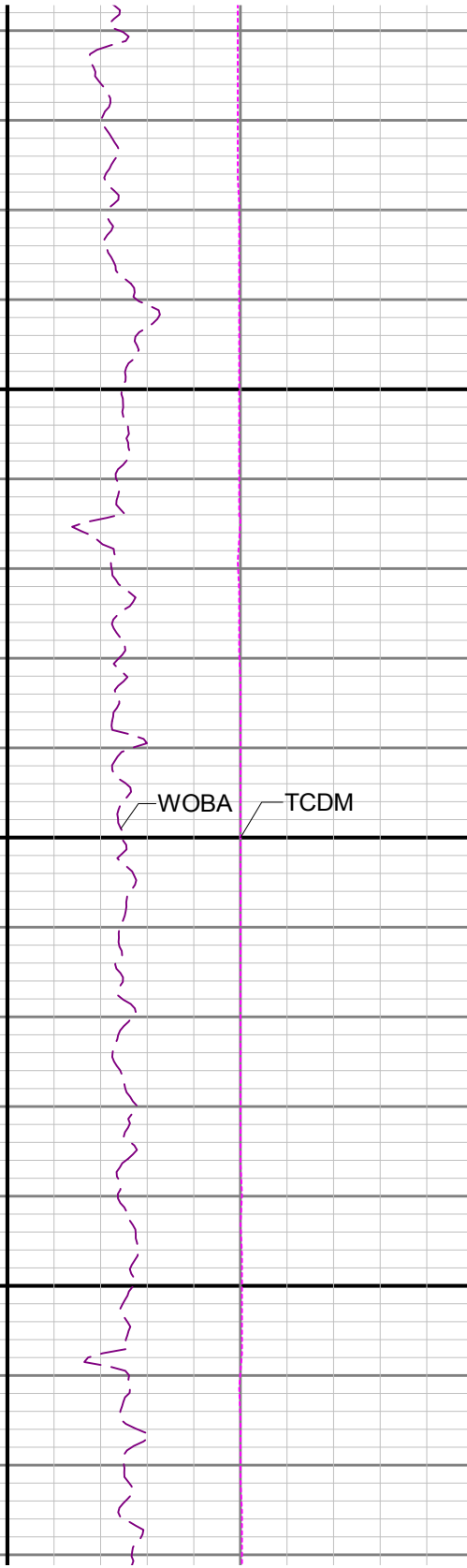
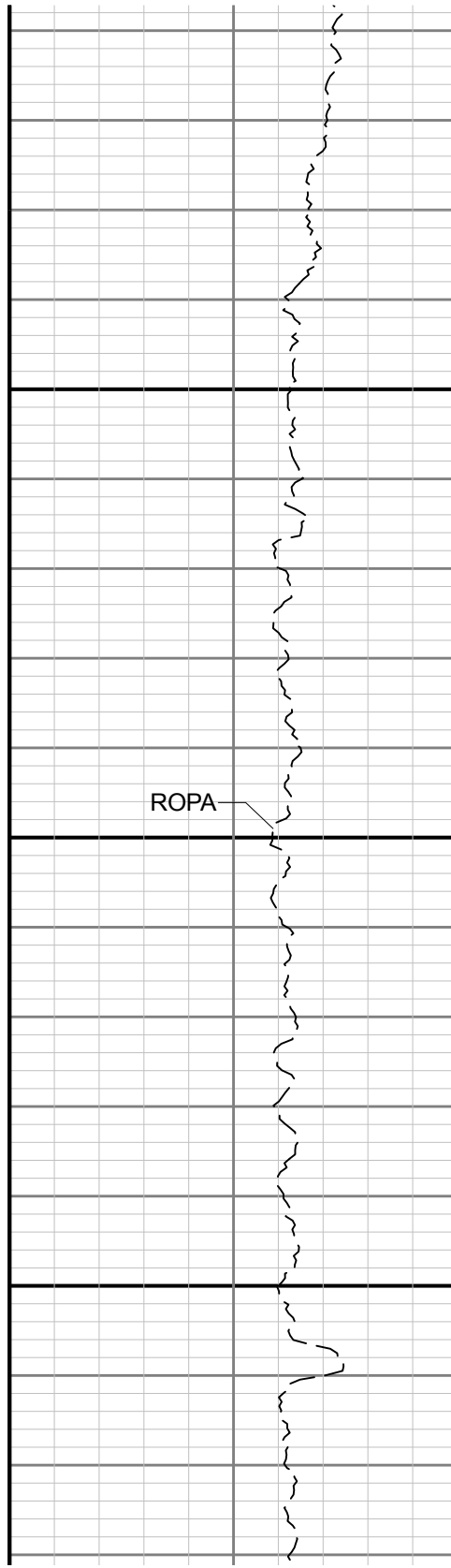


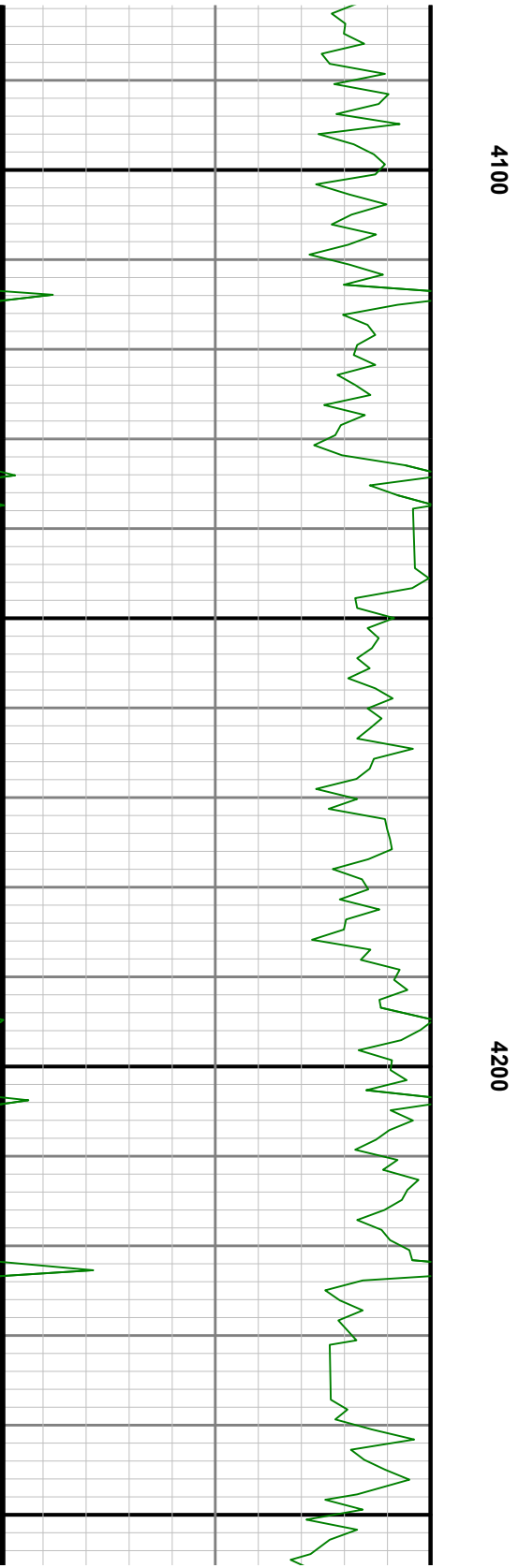
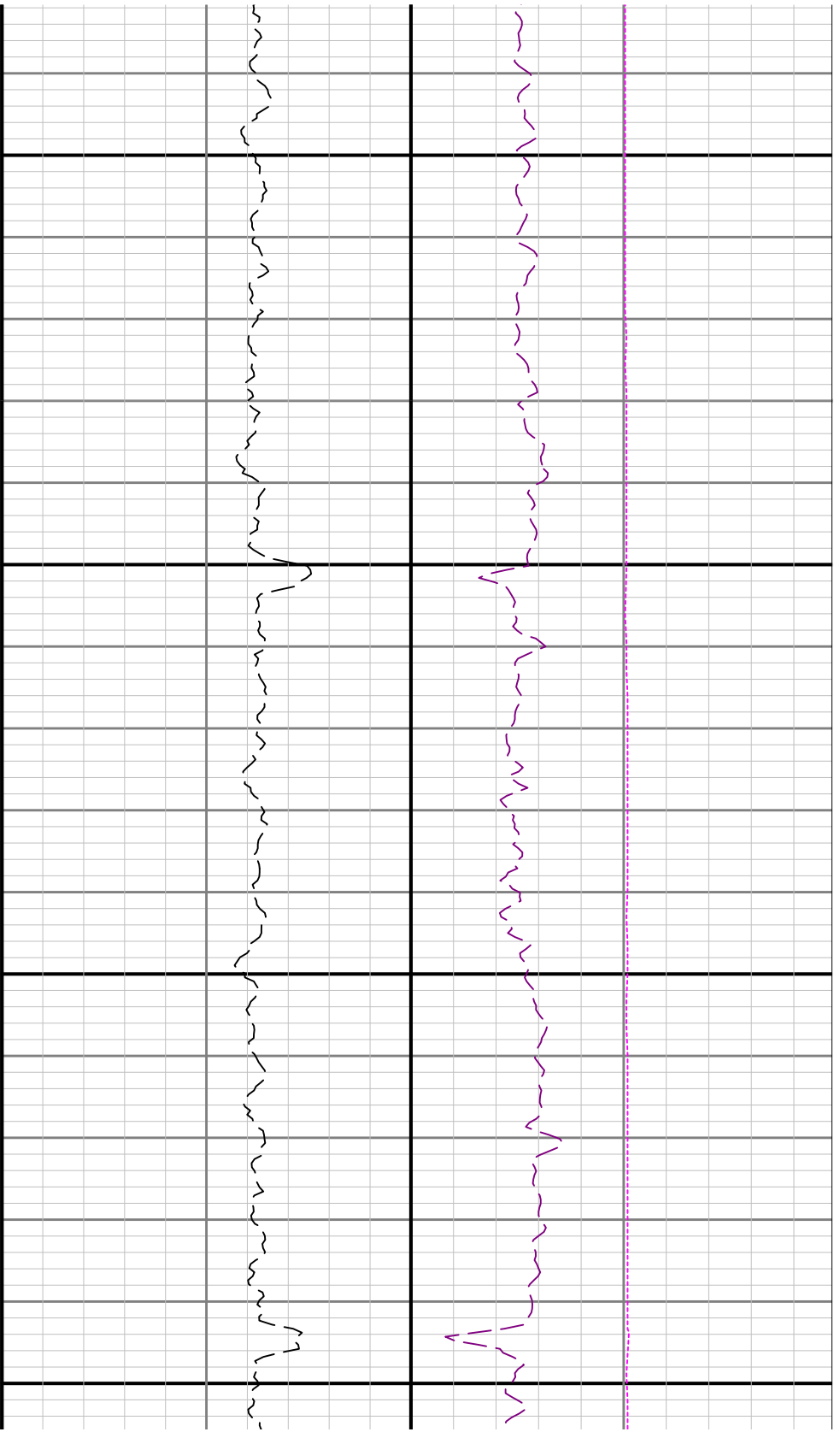


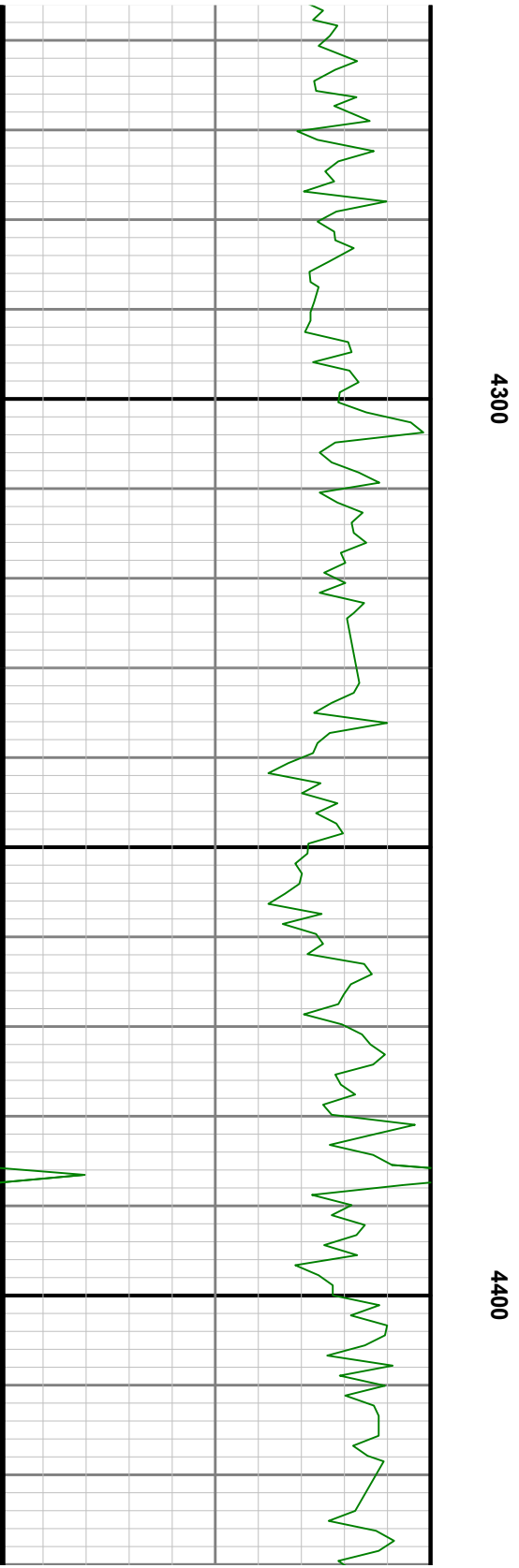
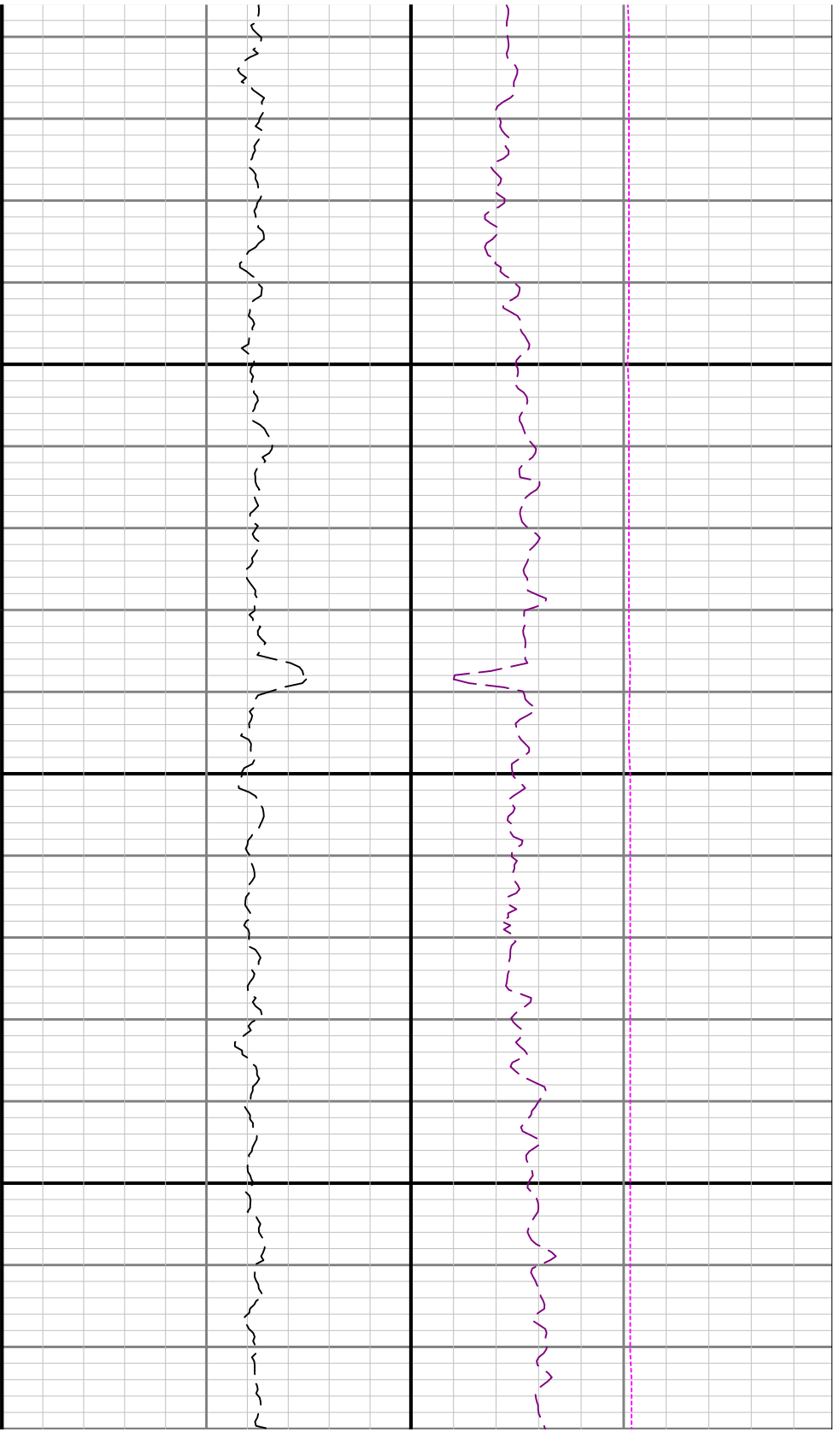


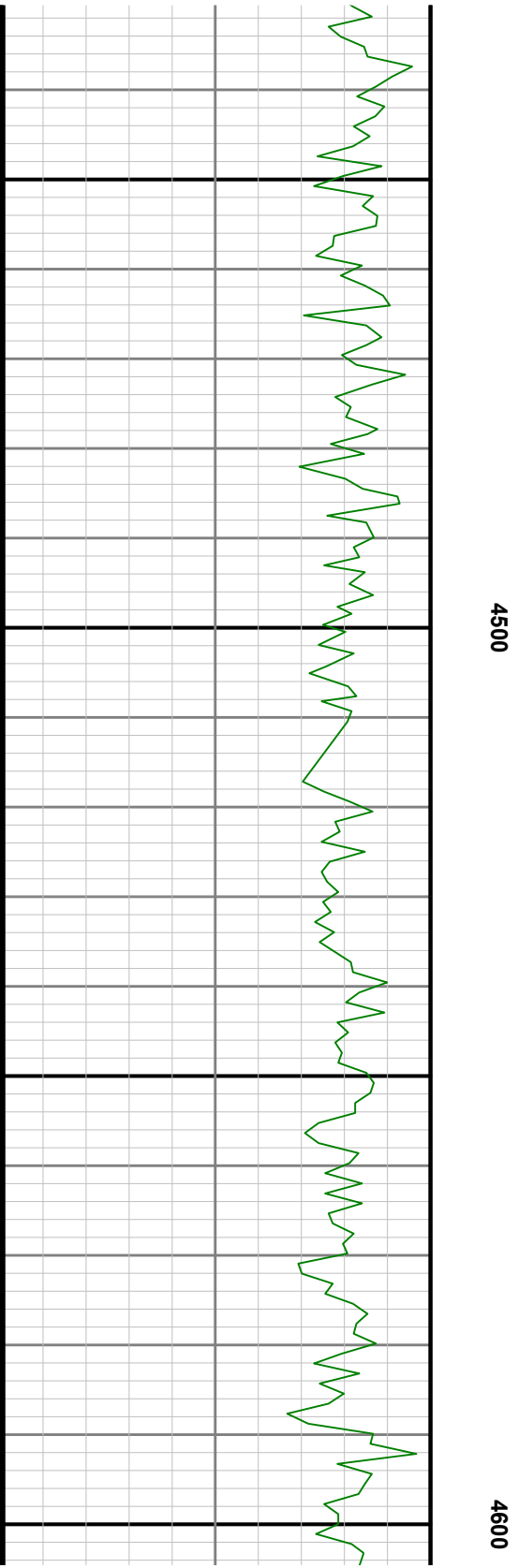
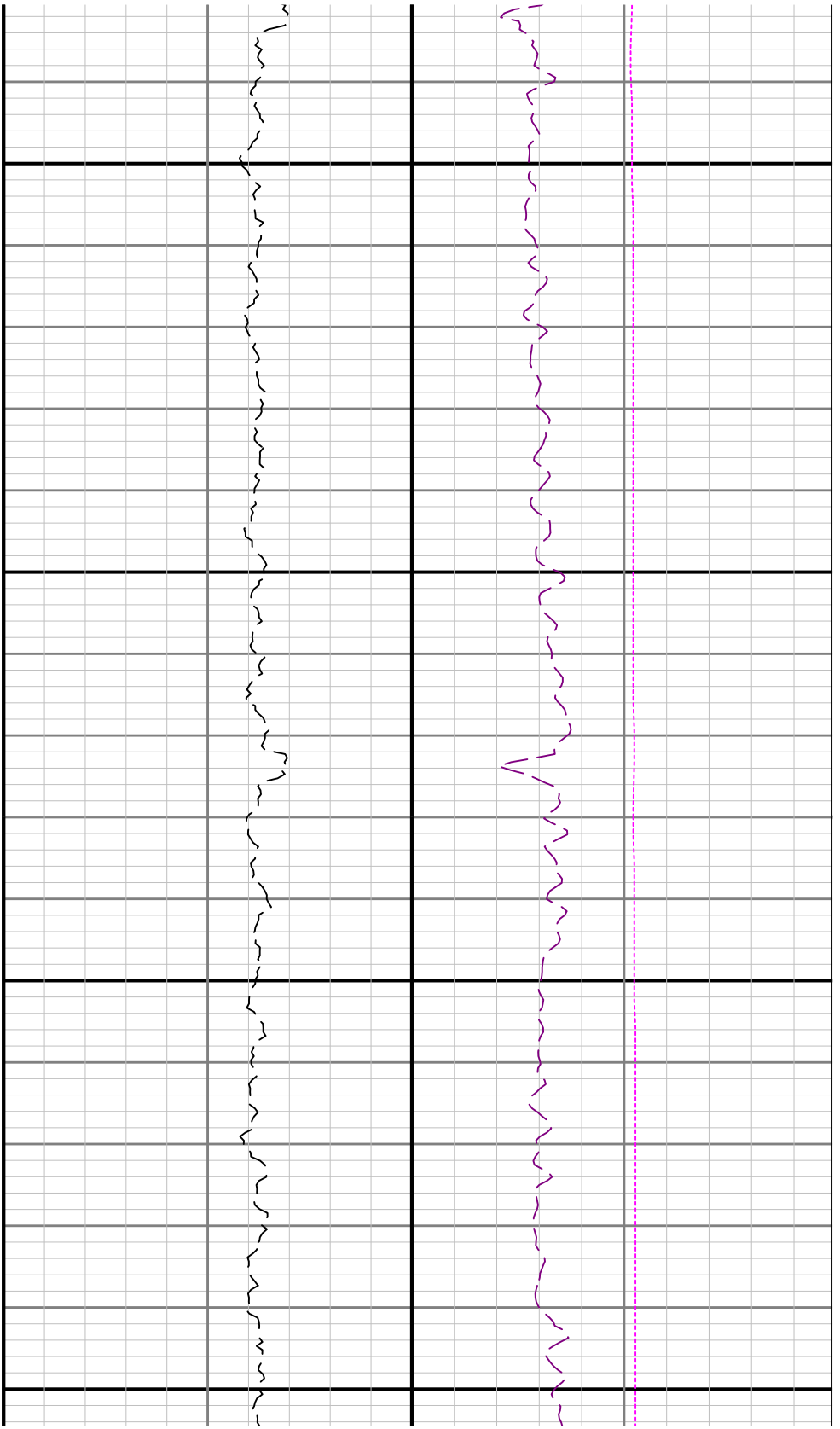


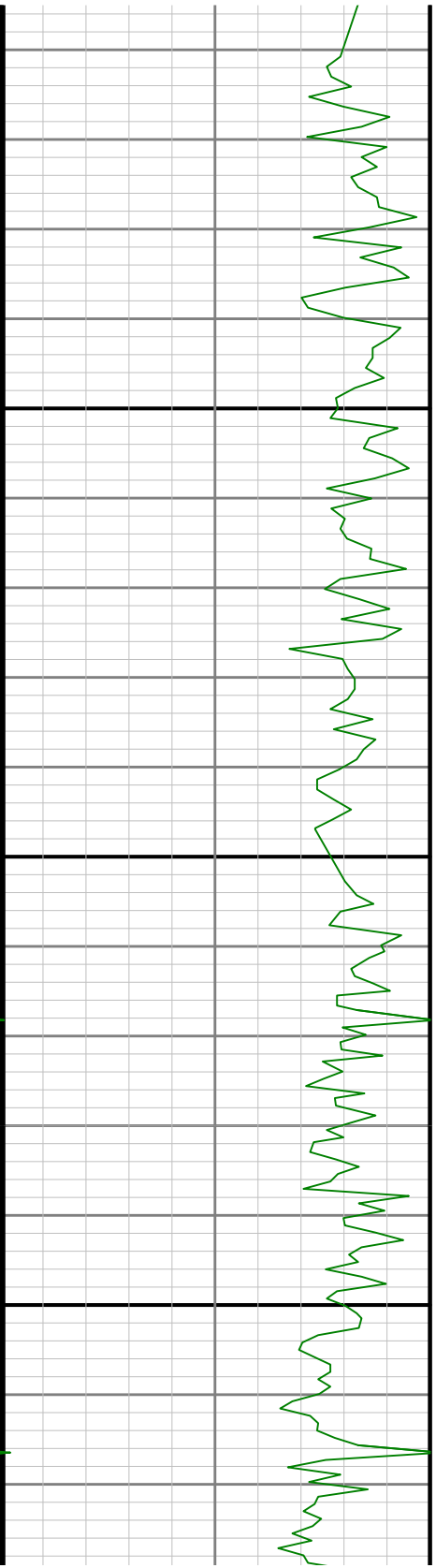
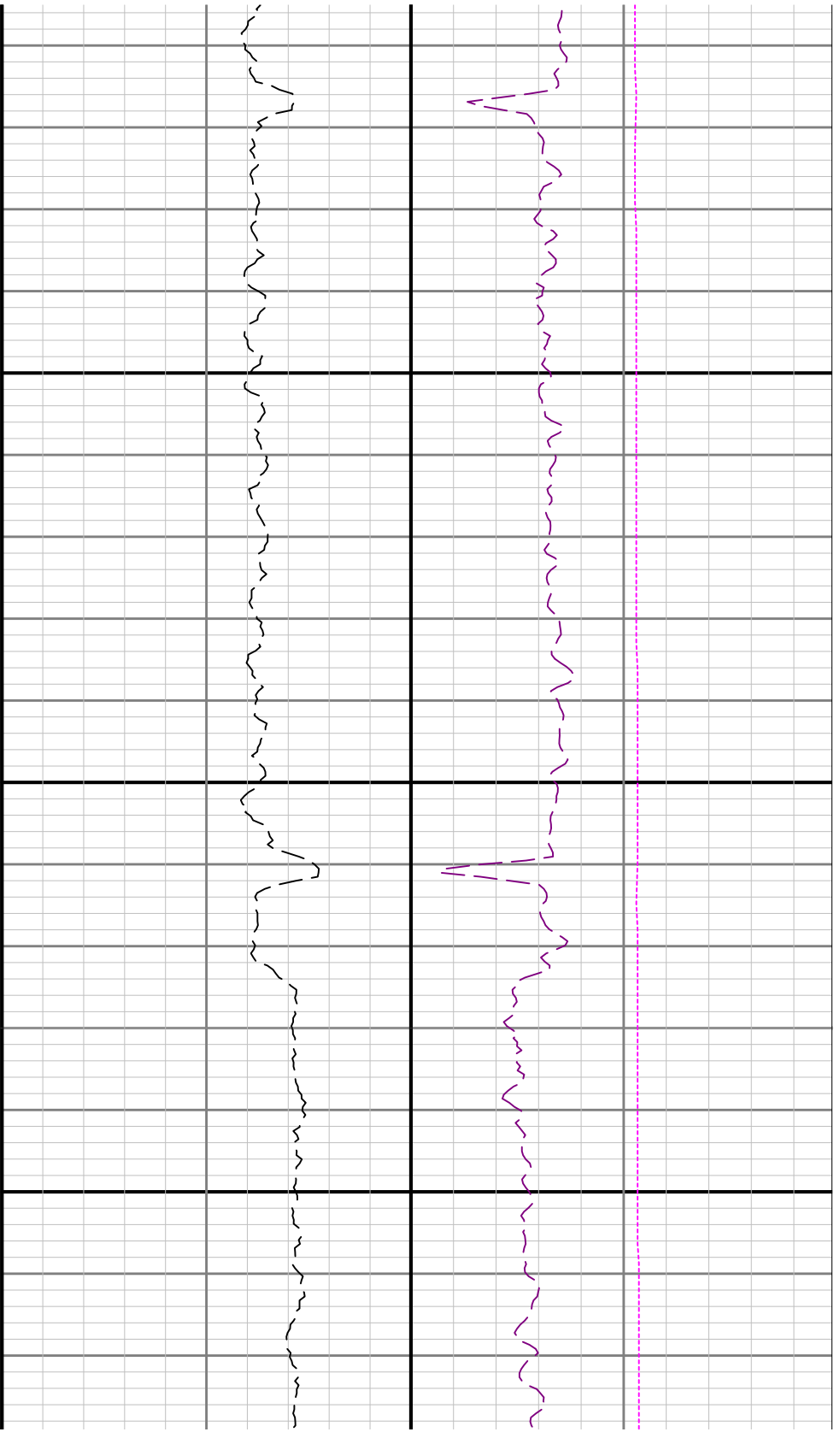
4000

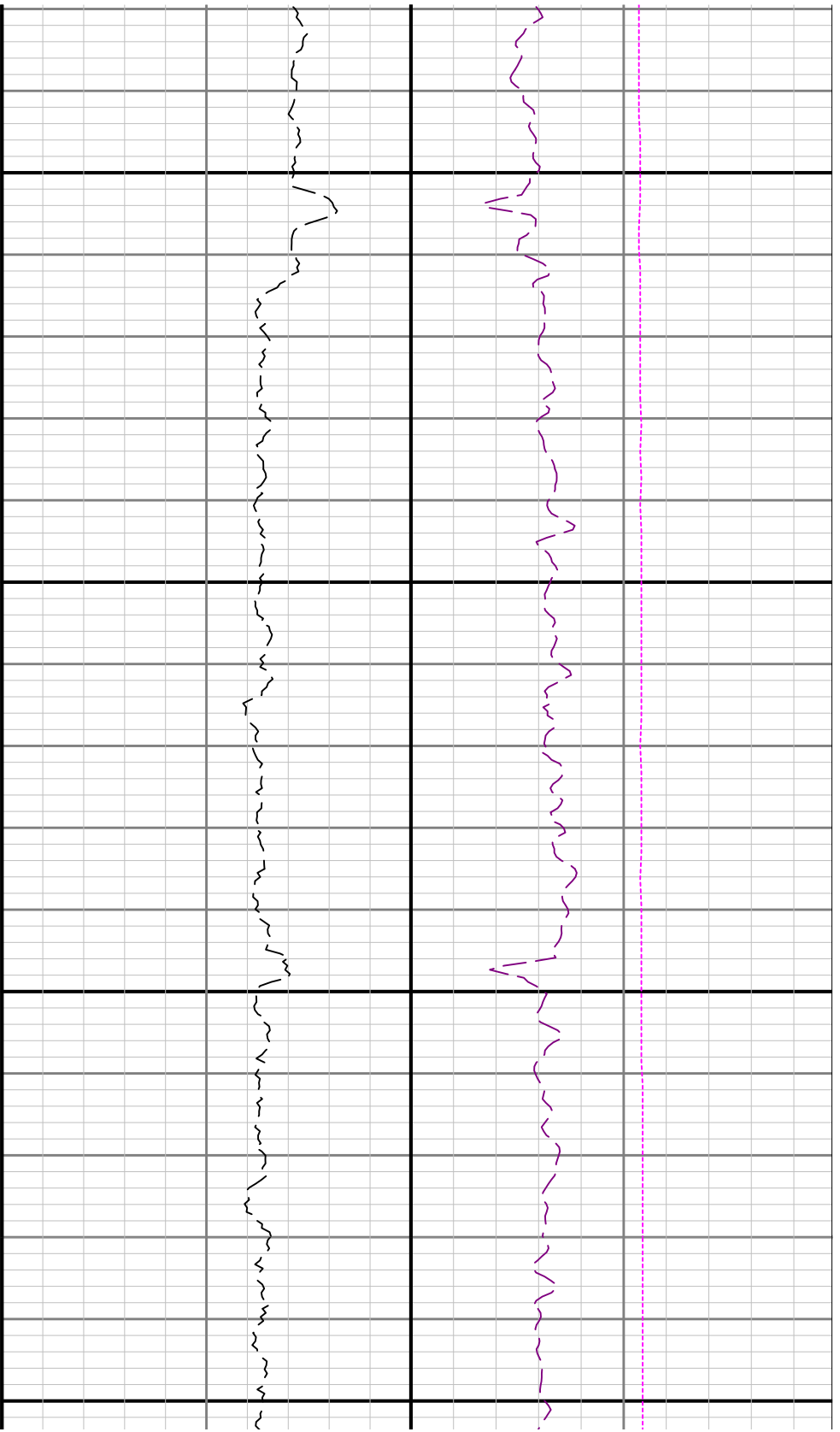


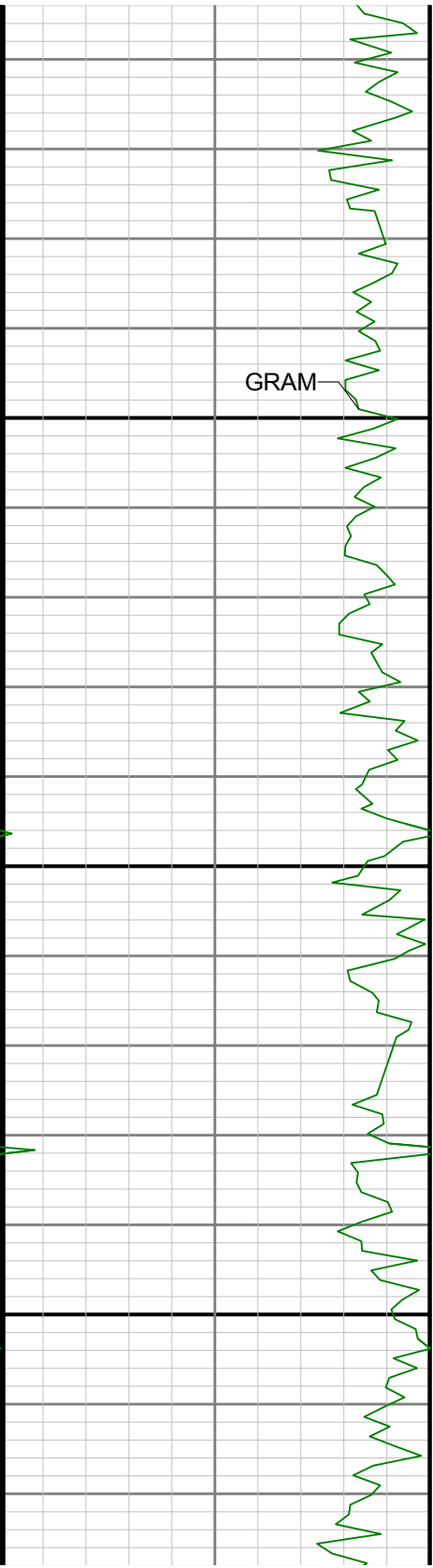








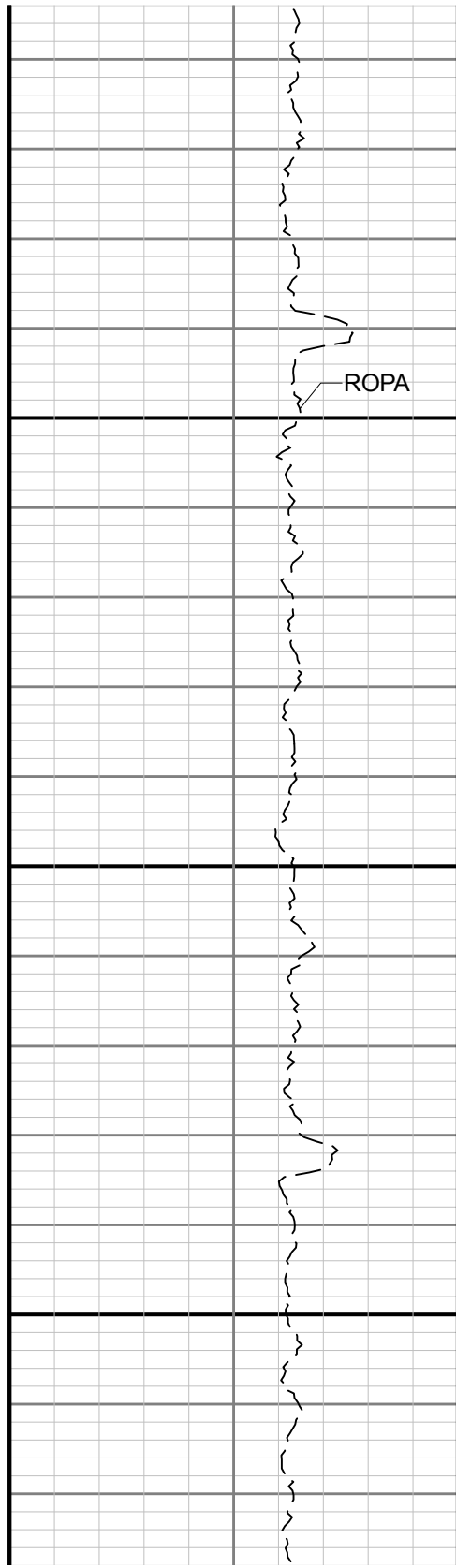




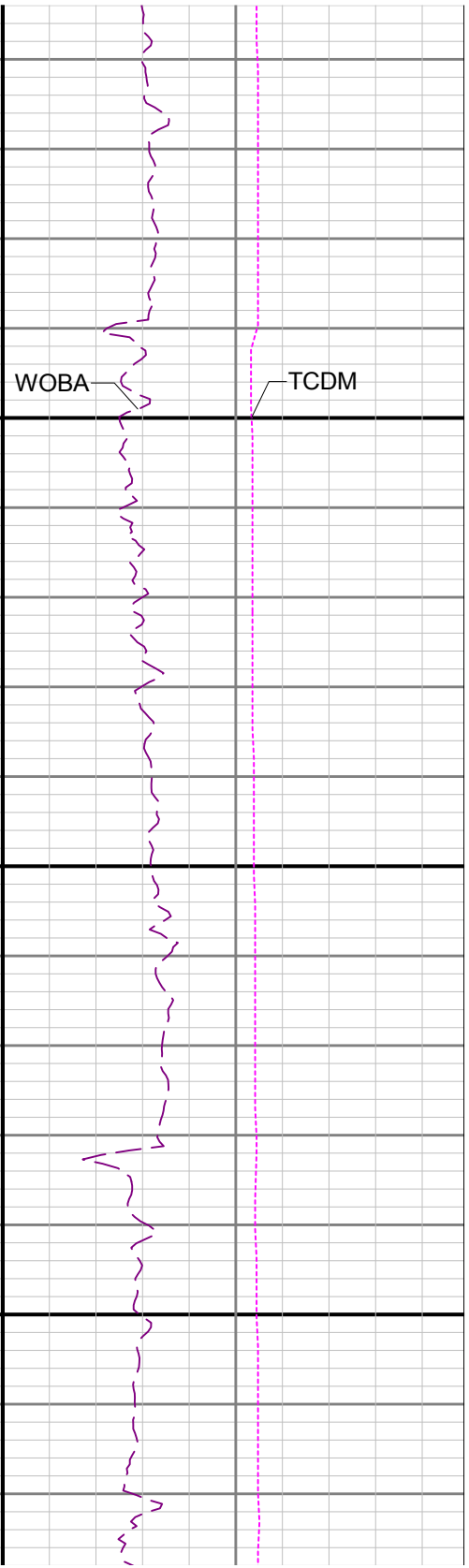
GRAM

5000

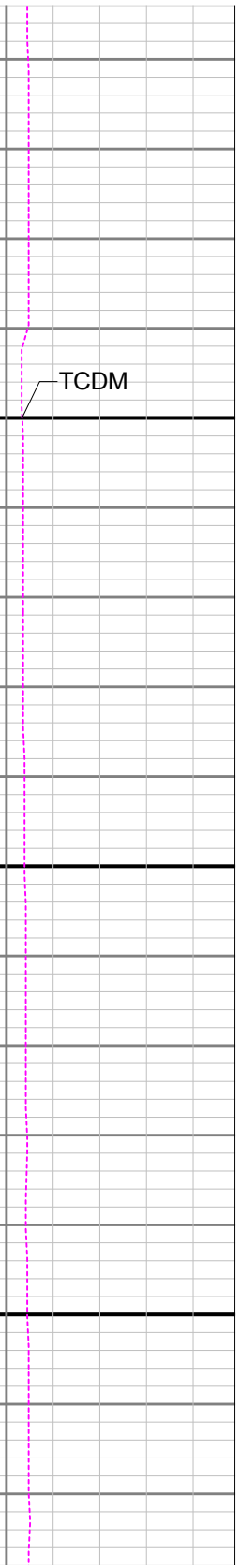
5100



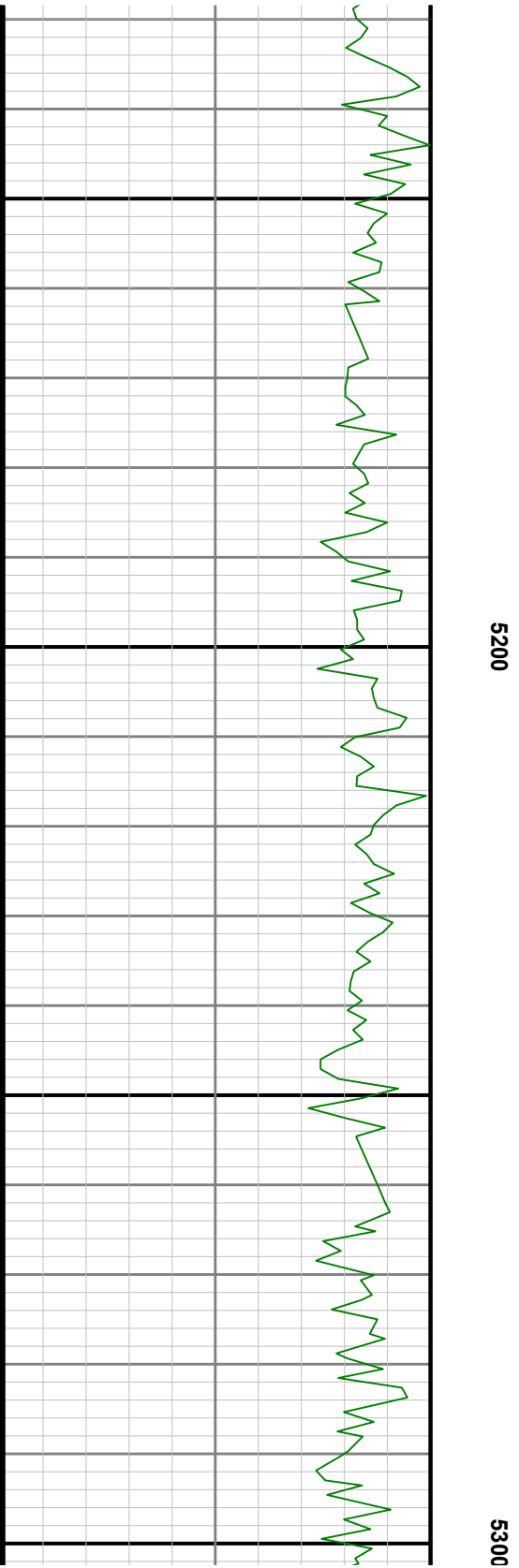
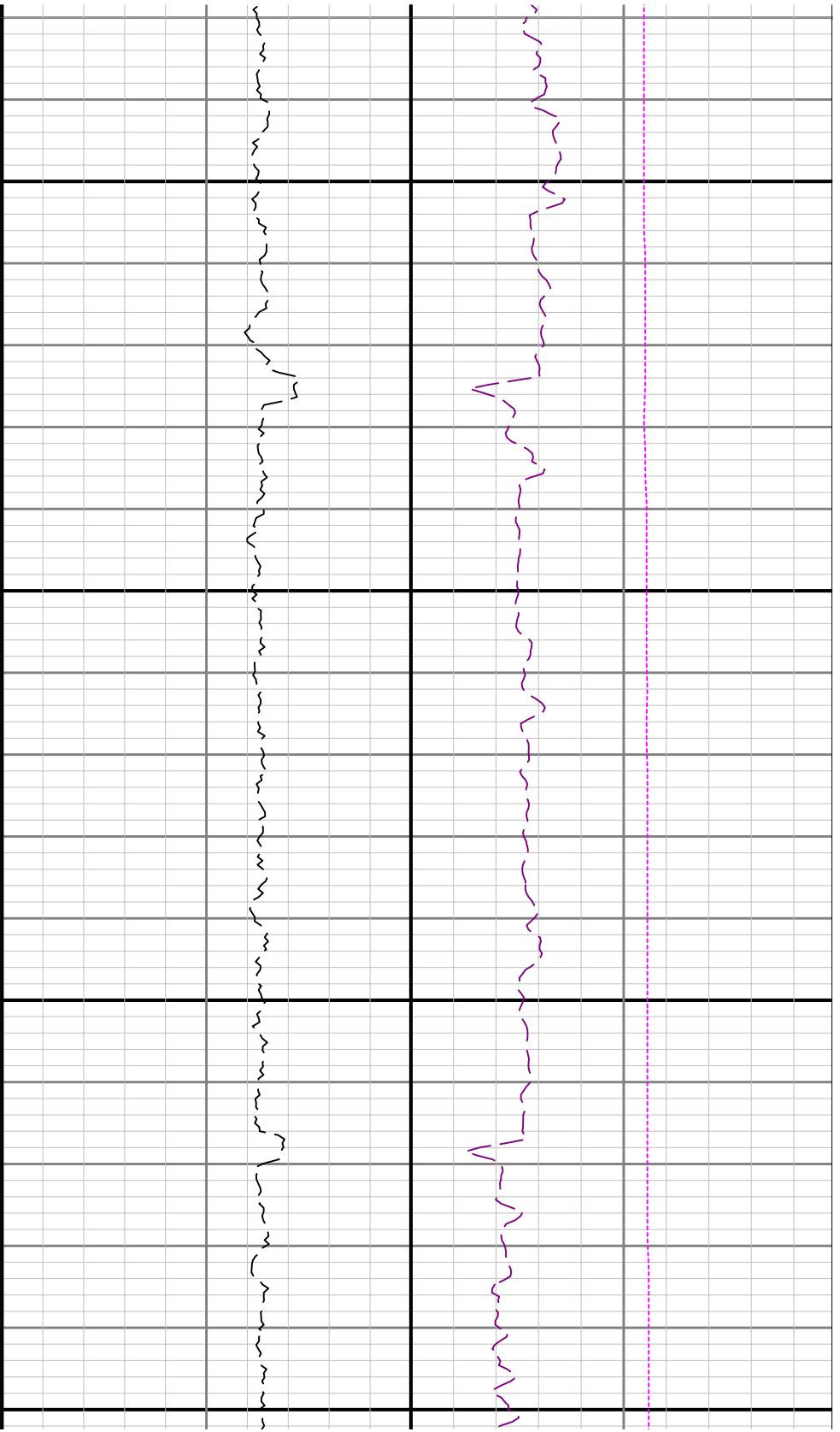
ROPA

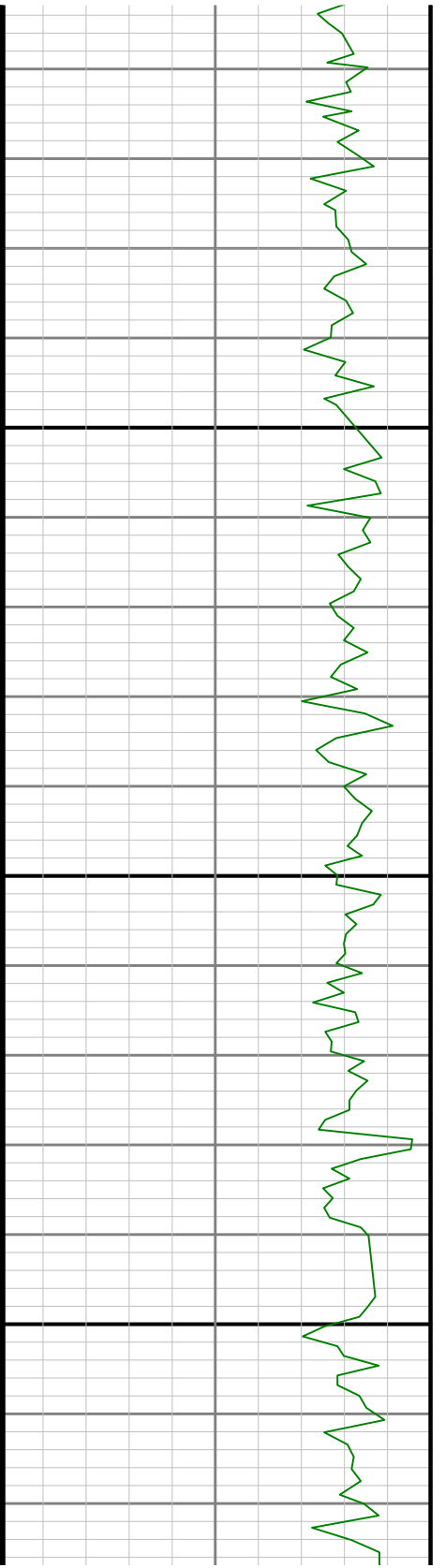
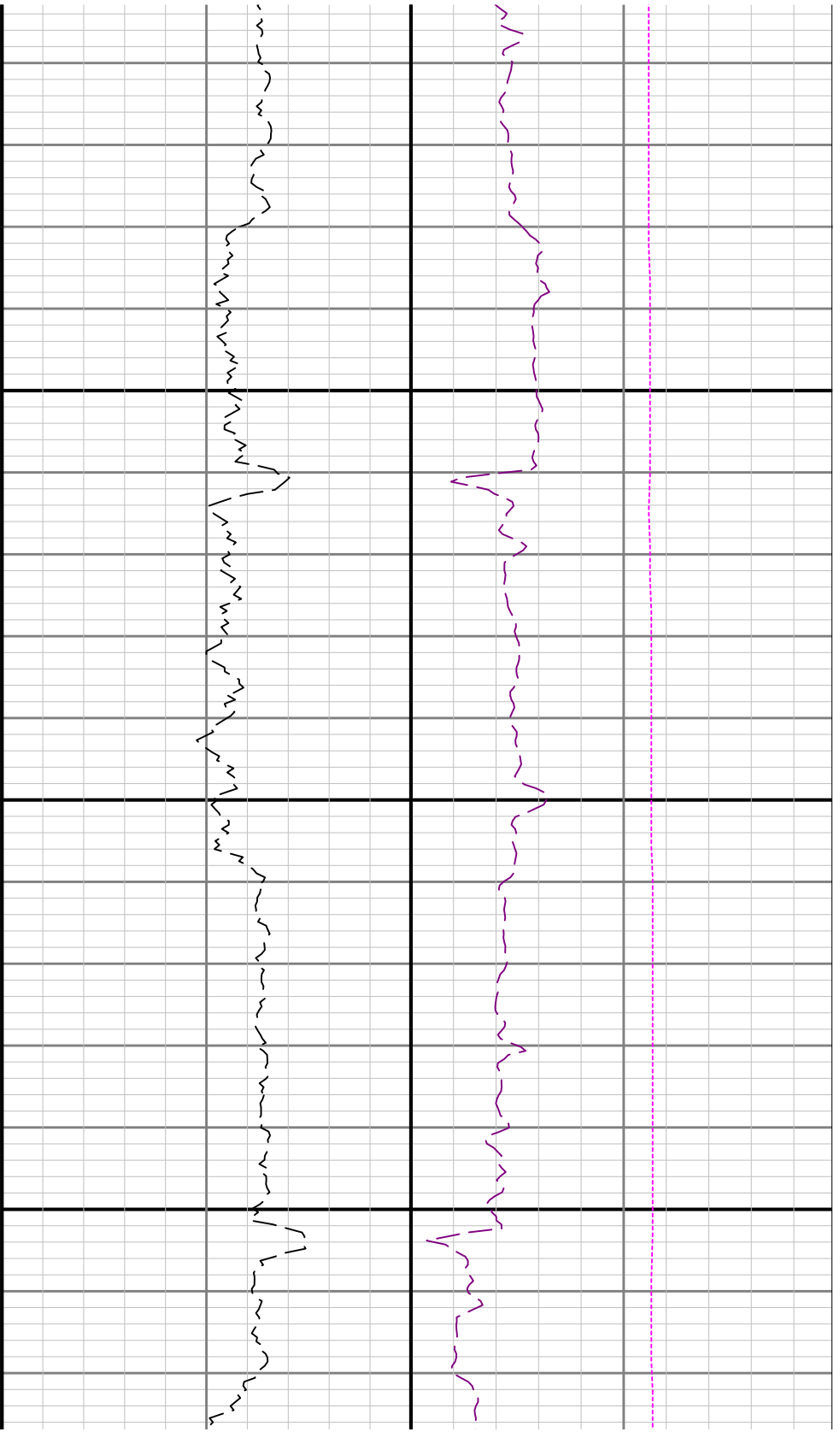


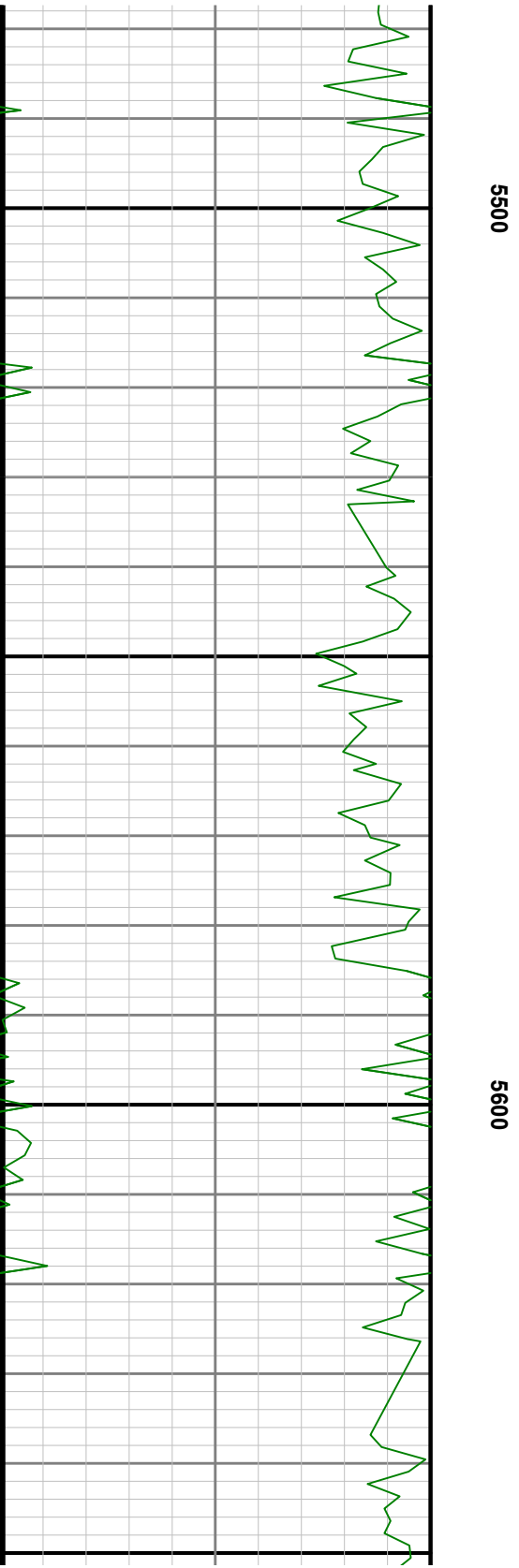
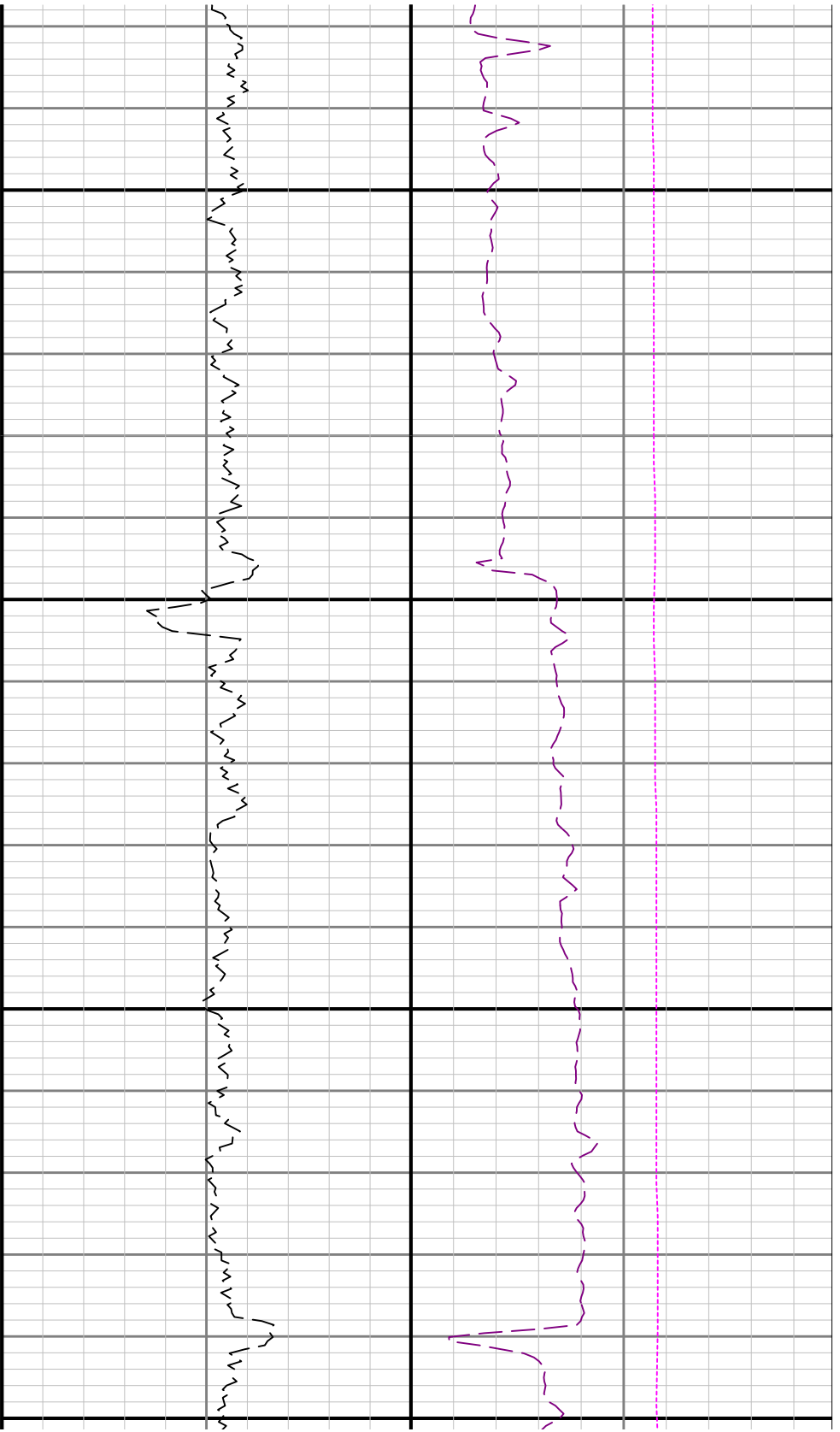
WOBA

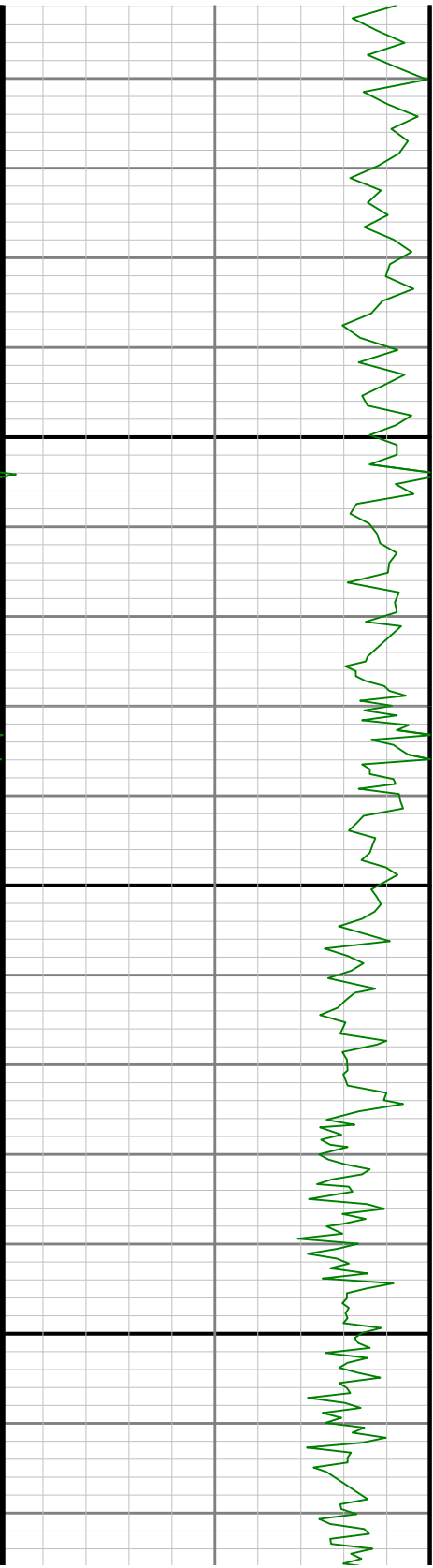


TCDM



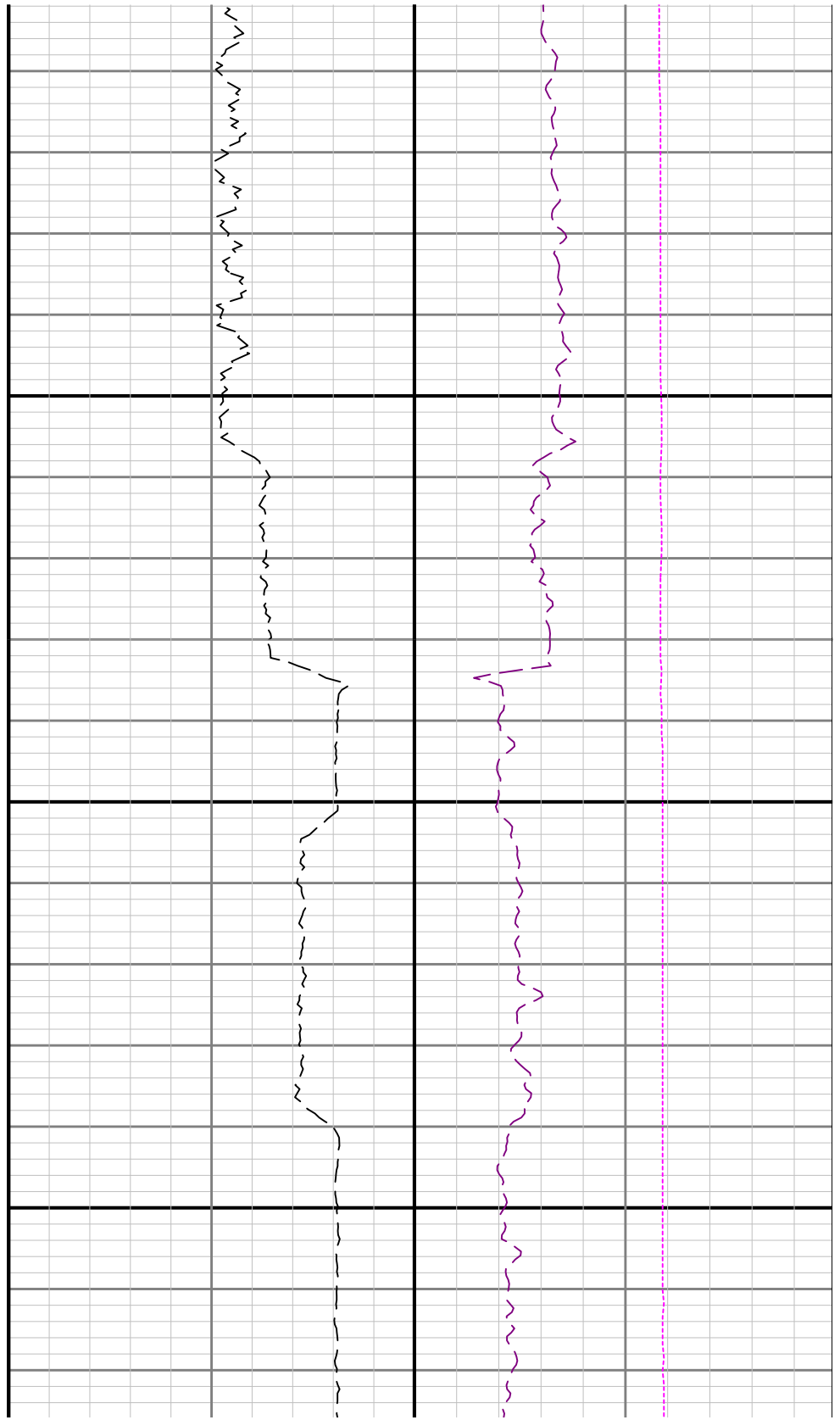


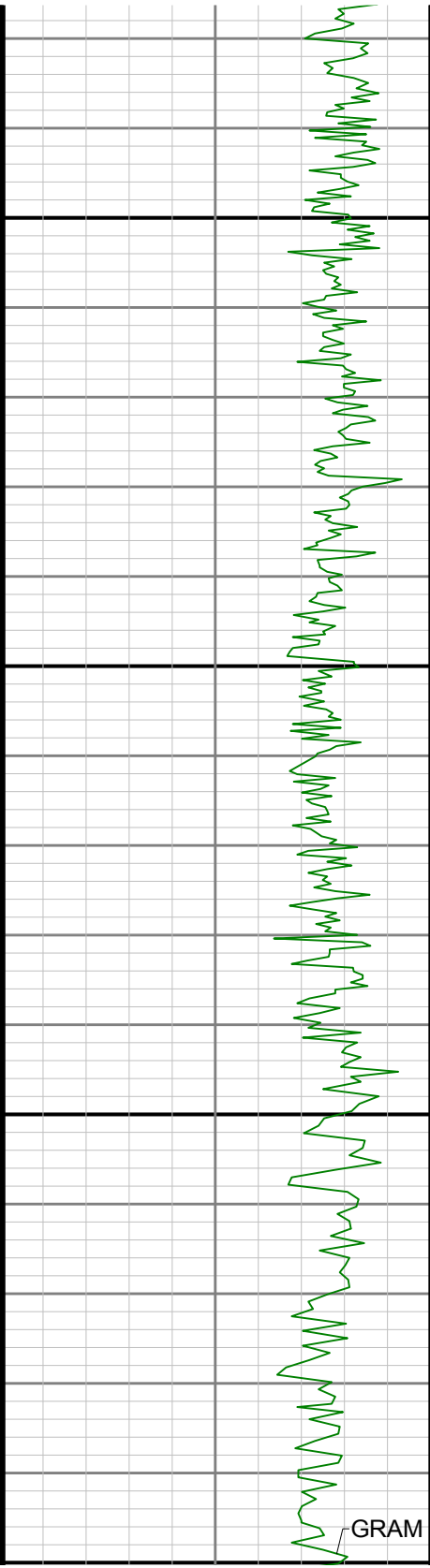




5700

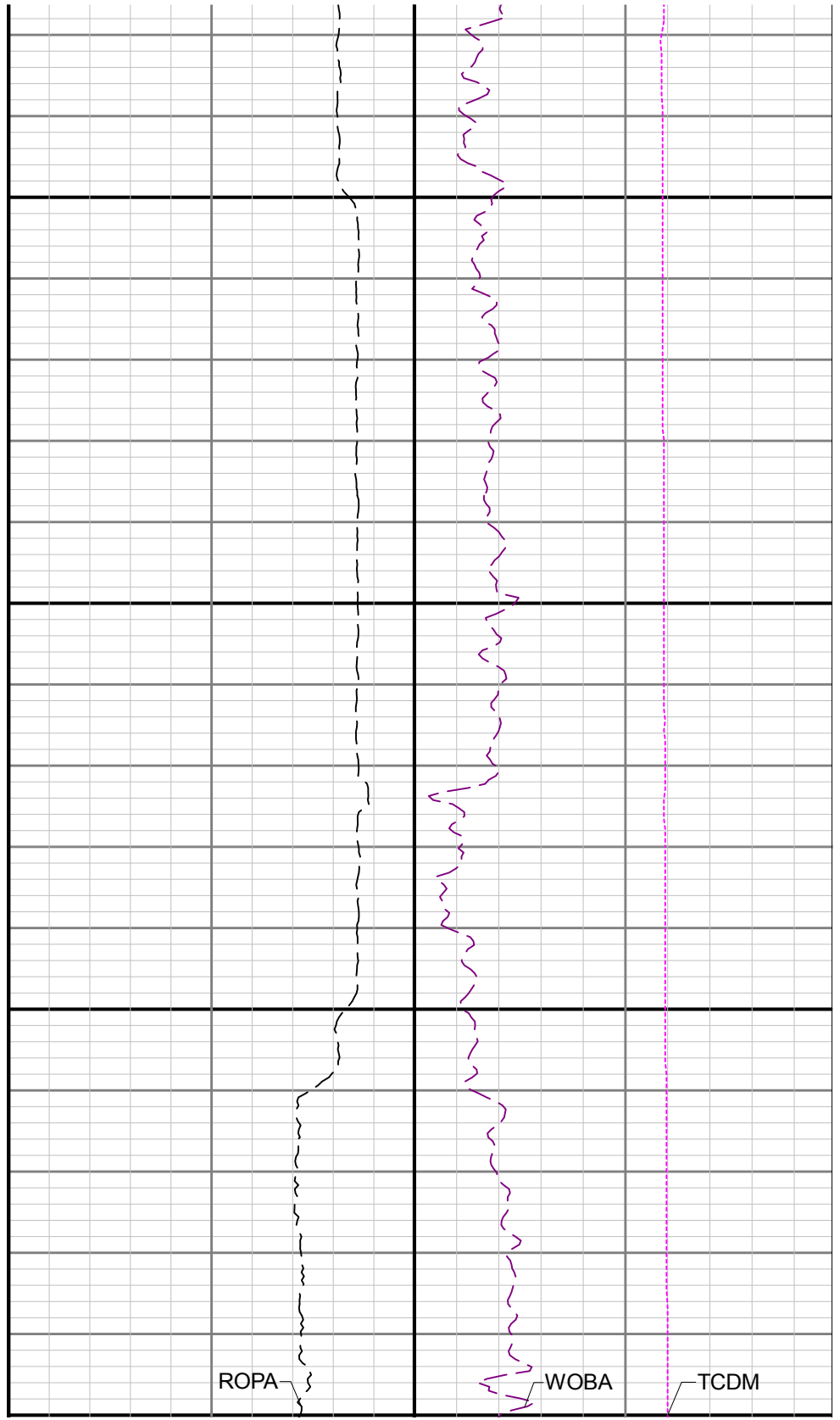
5800

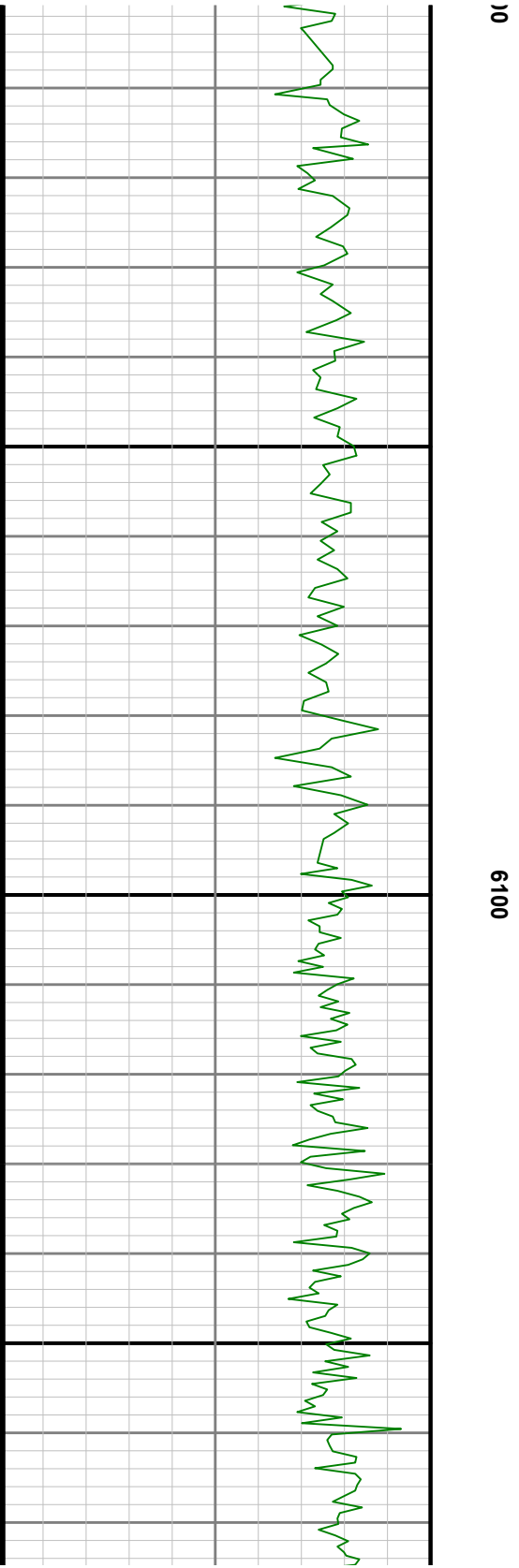
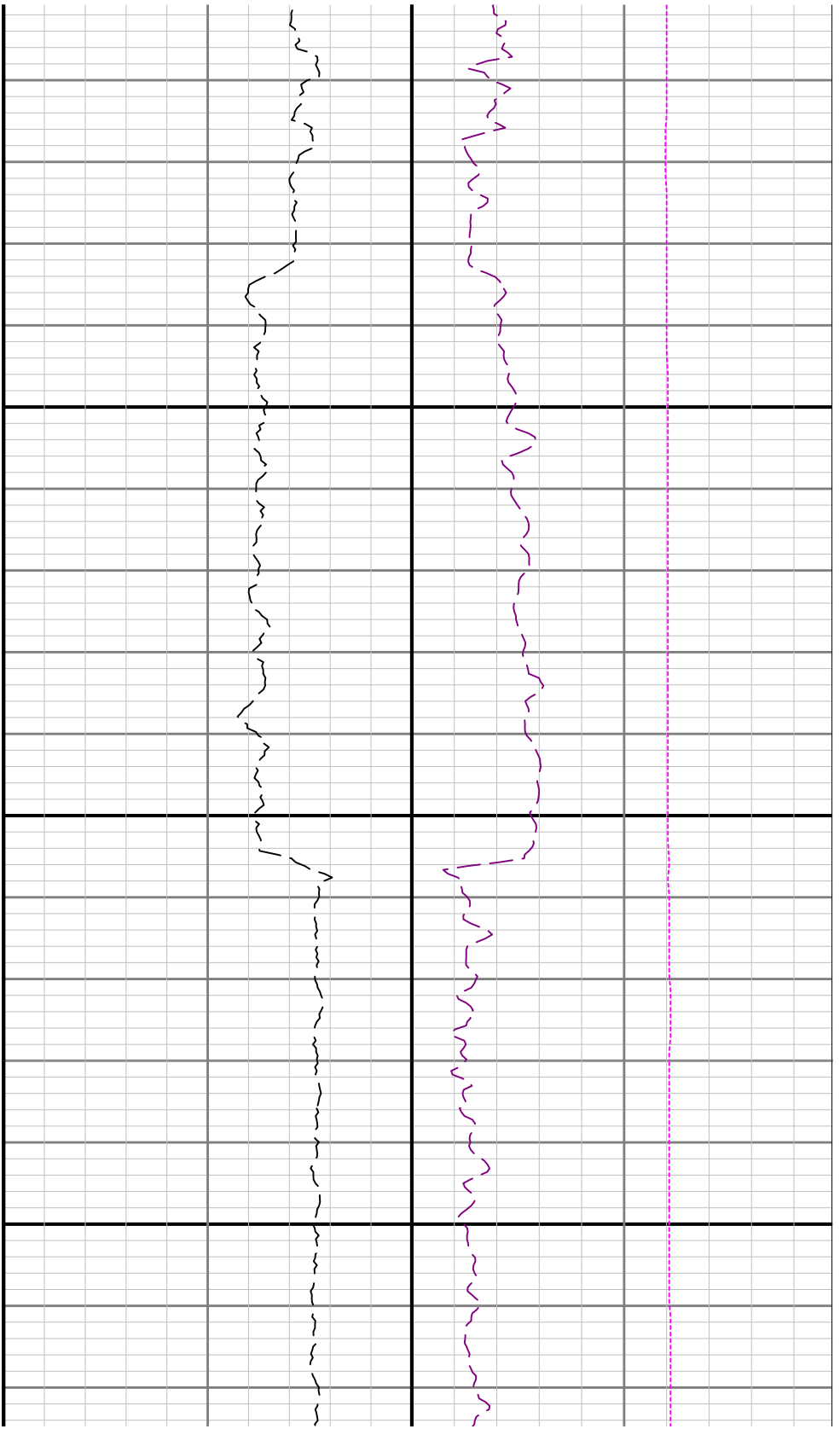


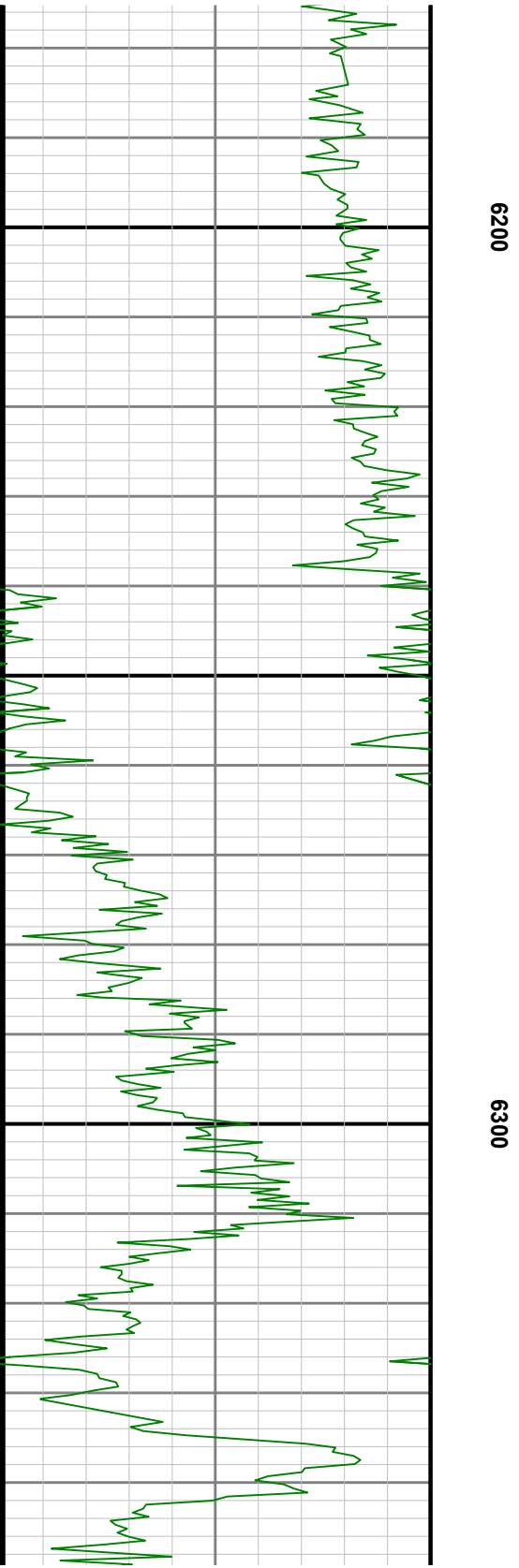
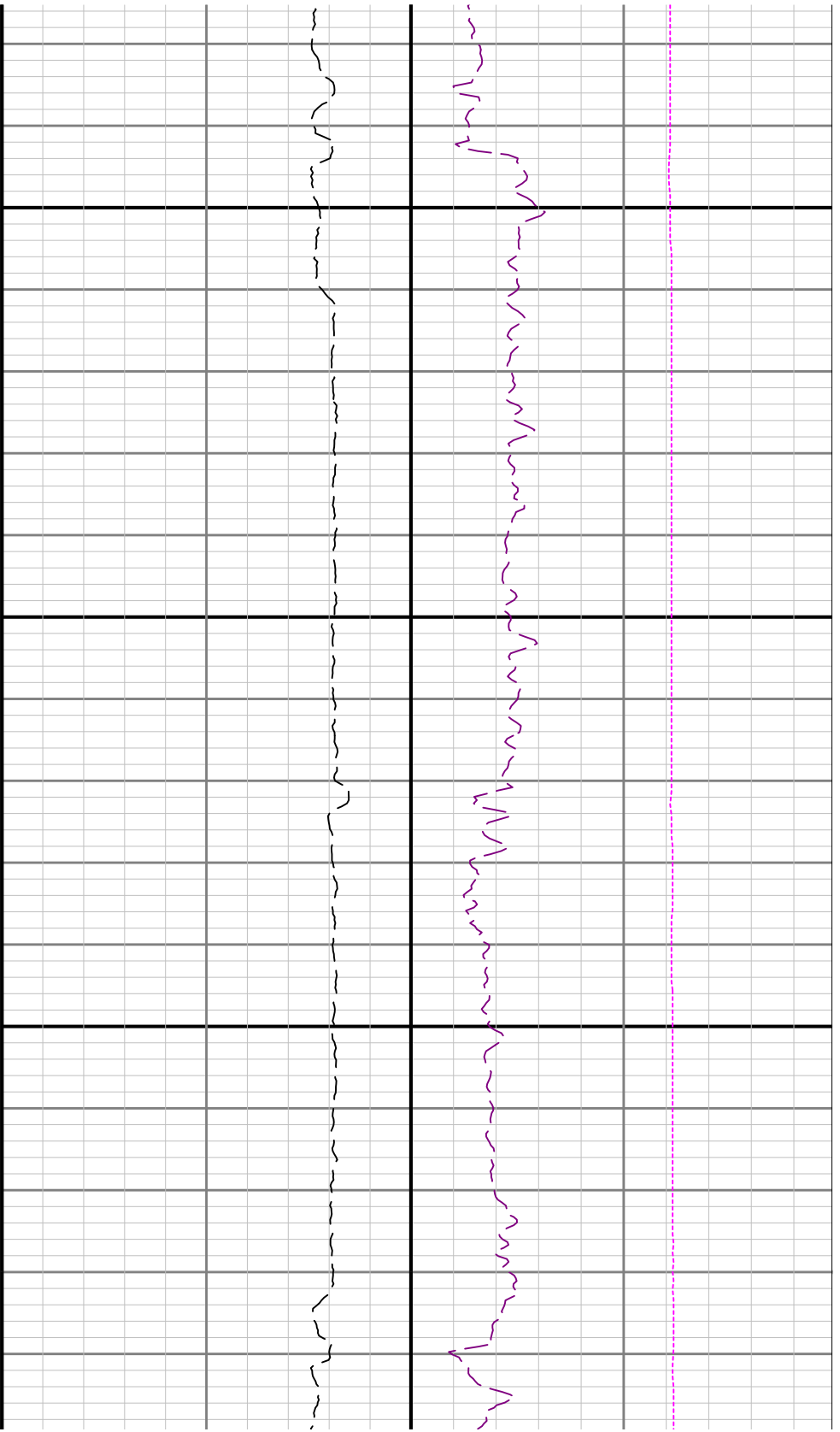


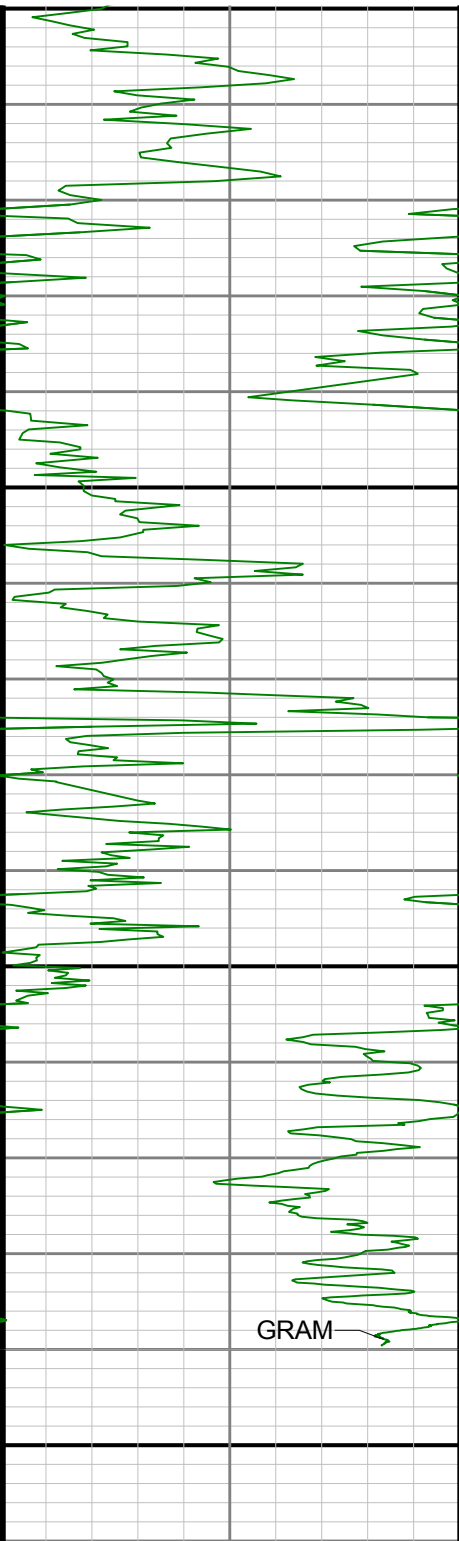
5900

60









GRAM

Gamma Ray - Apparent 0.5 ft Average GRAM

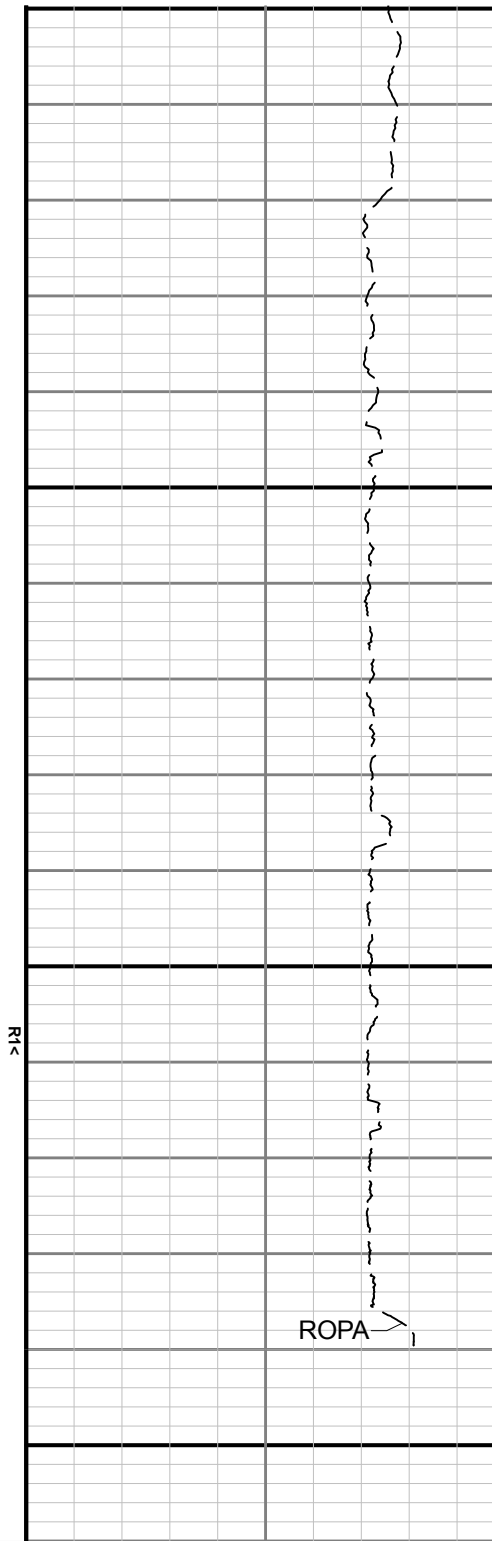
0 150

API

6400

6500

TVD 1:240

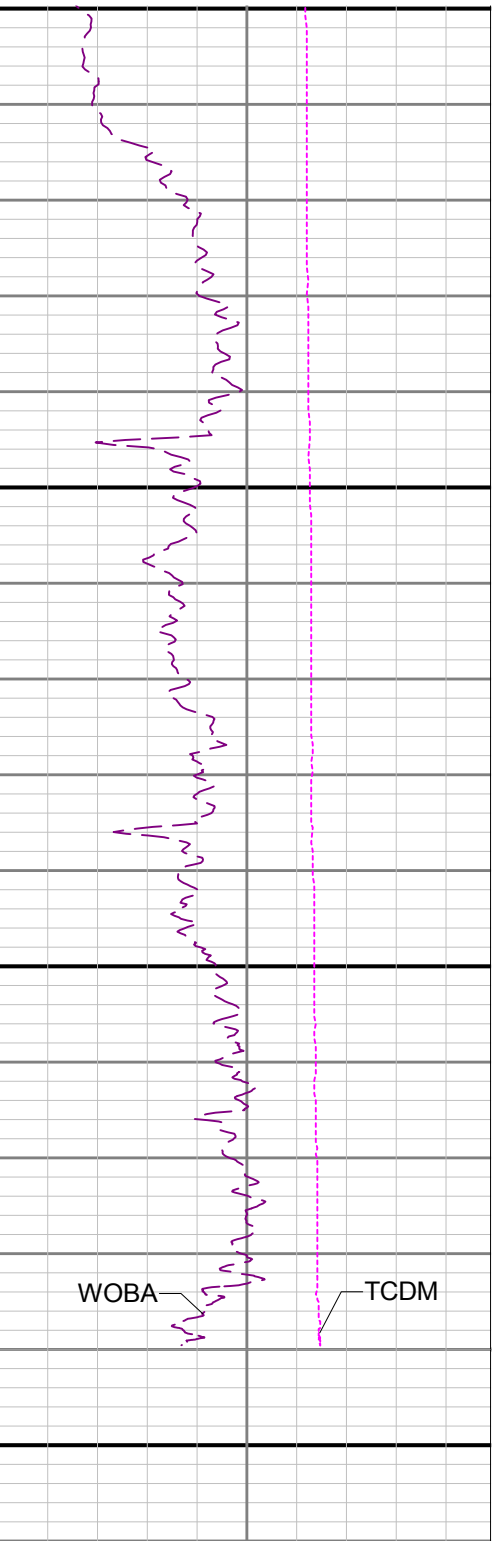


ROPA

Depth Averaged ROP 3 ft Average ROPA

1000 0

ft/h



WOBA

TCDM

Weight On Bit, Average 1 ft Average WOBA

0 50

klb

Downhole Temperature TCDM

		feet			0	Surface Temperature: 72.0 F		300
					degF			

Directional Survey Summary			
Latitude:	040° 24' 45.288" N	Longitude:	104° 24' 45.468" W
North Reference:	Grid	Drill Depth Zero:	Rig Floor
Vertical Datum is:	Ground Level	Vertical Datum to DDZ: (ft)	30.00
Vertical Section North: (ft)	0.00	Vertical Section East: (ft)	0.00
Vertical Section Azimuth: (deg)	89.67		
Grid Convergence: (deg)	-0.70	Magnetic Declination: (deg)	7.99
Total Correction: (deg)	7.29	TVD Calculation Method:	Minimum Curvature
Magnetic Correction:	Off	Local Magnetic Field: (nT)	52325
Local Magnetic Dip Angle: (deg)	67.08	Local Gravity Field: (m/s2)	9.800

Tie-In / Projection	Measured Depth (ft)	Inclination (deg)	Azimuth (deg)	Temperature (degF)	North (ft)	East (ft)	True Vertical Depth (ft)	TVD Subsea (ft)	Vertical Section (ft)	Course Length (ft)	Dog Leg Severity (deg/100ft)	Build Rate (deg/100ft)	Turn Rate (deg/100ft)
Tie-In	0.00	0.00	0.00	N/A	0.00	0.00	0.00	-4698.00	0.00	0.00	0.00	0.00	0.00
	87.00	0.44	8.90	N/A	0.33	0.05	87.00	-4611.00	0.05	87.00	0.51	0.51	10.23
	183.00	0.47	355.83	N/A	1.09	0.08	183.00	-4515.00	0.09	96.00	0.11	0.03	-13.61
	275.00	0.38	265.28	N/A	1.44	-0.25	274.99	-4423.01	-0.24	92.00	0.66	-0.10	-98.42
	369.00	0.26	290.79	N/A	1.49	-0.76	368.99	-4329.01	-0.75	94.00	0.20	-0.13	27.14
	464.00	0.03	352.77	N/A	1.59	-0.97	463.99	-4234.01	-0.96	95.00	0.26	-0.24	65.24
	559.00	0.63	315.04	N/A	1.98	-1.34	558.99	-4139.01	-1.33	95.00	0.64	0.63	-39.72
	653.00	0.21	299.97	N/A	2.44	-1.85	652.99	-4045.01	-1.84	94.00	0.46	-0.45	-16.03
	748.00	0.53	345.83	N/A	2.95	-2.11	747.99	-3950.01	-2.09	95.00	0.43	0.34	48.27
	842.00	0.48	21.18	N/A	3.74	-2.08	841.98	-3856.02	-2.05	94.00	0.33	-0.05	37.61
	937.00	0.55	332.58	N/A	4.51	-2.14	936.98	-3761.02	-2.12	95.00	0.45	0.07	-51.16
	1031.00	0.48	34.23	N/A	5.24	-2.13	1030.98	-3667.02	-2.10	94.00	0.57	-0.07	65.59
	1126.00	0.50	64.74	N/A	5.74	-1.53	1125.97	-3572.03	-1.50	95.00	0.27	0.02	32.12
	1221.00	0.39	27.80	N/A	6.21	-1.00	1220.97	-3477.03	-0.97	95.00	0.32	-0.12	-38.88
	1315.00	0.36	54.12	N/A	6.66	-0.61	1314.97	-3383.03	-0.58	94.00	0.18	-0.03	28.00
	1410.00	0.33	96.04	N/A	6.81	-0.10	1409.97	-3288.03	-0.06	95.00	0.26	-0.03	44.13
	1504.00	0.28	77.64	N/A	6.83	0.39	1503.97	-3194.03	0.43	94.00	0.12	-0.05	-19.57
	1599.00	0.38	98.98	N/A	6.83	0.93	1598.96	-3099.04	0.97	95.00	0.17	0.11	22.46
	1693.00	0.27	144.60	N/A	6.60	1.37	1692.96	-3005.04	1.40	94.00	0.29	-0.12	48.53
	1788.00	0.30	249.14	N/A	6.33	1.26	1787.96	-2910.04	1.30	95.00	0.47	0.03	110.04
	1882.00	0.20	20.53	N/A	6.40	1.09	1881.96	-2816.04	1.13	94.00	0.49	-0.11	139.78
Tie-In	1915.00	0.33	41.55	N/A	6.52	1.17	1914.96	-2783.04	1.21	33.00	0.49	0.39	63.70
	1979.00	1.81	102.04	N/A	6.45	2.29	1978.95	-2719.05	2.32	64.00	2.61	2.31	94.52
	2074.00	1.17	41.61	N/A	6.86	4.40	2073.92	-2624.08	4.44	95.00	1.68	-0.67	-63.61
	2169.00	1.94	343.24	N/A	9.13	4.58	2168.89	-2529.11	4.63	95.00	1.75	0.81	-61.44
	2263.00	4.24	308.86	N/A	12.83	1.41	2262.75	-2435.25	1.49	94.00	3.04	2.45	-36.57
	2358.00	4.22	278.76	N/A	15.57	-4.78	2357.51	-2340.49	-4.69	95.00	2.31	-0.02	-31.68
	2452.00	5.06	289.82	N/A	17.50	-12.10	2451.20	-2246.80	-12.00	94.00	1.30	0.89	11.77
	2547.00	6.46	302.45	N/A	21.79	-20.55	2545.72	-2152.28	-20.42	95.00	1.98	1.47	13.29
	2641.00	8.71	304.03	N/A	28.61	-30.91	2638.89	-2059.11	-30.74	94.00	2.40	2.39	1.68
	2736.00	9.49	286.50	N/A	34.86	-44.38	2732.72	-1965.28	-44.18	95.00	3.02	0.82	-18.45
	2830.00	10.36	257.54	N/A	35.24	-60.08	2825.37	-1872.63	-59.87	94.00	5.33	0.93	-30.81
	2925.00	10.47	233.66	N/A	28.28	-75.38	2918.84	-1779.16	-75.21	95.00	4.51	0.12	-25.14
	3019.00	9.47	212.46	N/A	16.69	-86.41	3011.45	-1686.55	-86.31	94.00	4.02	-1.06	-22.55
	3114.00	9.15	215.93	N/A	3.98	-95.04	3105.20	-1592.80	-95.01	95.00	0.68	-0.34	3.65
	3208.00	8.94	232.26	N/A	-6.55	-105.20	3198.05	-1499.95	-105.24	94.00	2.73	-0.22	17.37
	3303.00	9.53	256.26	N/A	-12.94	-118.68	3291.85	-1406.15	-118.76	95.00	4.07	0.62	25.26
	3397.00	8.88	267.42	N/A	-15.11	-133.49	3384.65	-1313.35	-133.58	94.00	2.02	-0.69	11.87
	3492.00	8.77	279.65	N/A	-14.23	-147.96	3478.53	-1219.47	-148.04	95.00	1.97	-0.12	12.87
	3586.00	10.25	286.20	N/A	-10.69	-163.05	3571.24	-1126.76	-163.11	94.00	1.95	1.57	6.97
	3681.00	11.17	271.15	N/A	-8.15	-180.37	3664.60	-1033.40	-180.42	95.00	3.09	0.97	-15.84

	3775.00	12.17	255.82	N/A	-10.40	-199.09	3756.68	-941.32	-199.15	94.00	3.45	1.06	-16.31
	3869.00	12.74	242.75	N/A	-17.57	-217.91	3848.49	-849.51	-218.01	94.00	3.05	0.61	-13.90
	3964.00	9.69	231.61	N/A	-27.33	-233.50	3941.67	-756.33	-233.65	95.00	3.92	-3.21	-11.73
	4058.00	9.64	240.92	N/A	-36.07	-246.58	4034.35	-663.65	-246.78	94.00	1.66	-0.05	9.90
	4153.00	9.84	245.95	N/A	-43.25	-260.94	4127.98	-570.02	-261.19	95.00	0.92	0.21	5.29
	4247.00	9.60	256.36	N/A	-48.37	-275.90	4220.64	-477.36	-276.17	94.00	1.88	-0.26	11.07
	4342.00	9.73	273.91	N/A	-49.69	-291.61	4314.31	-383.69	-291.89	95.00	3.09	0.14	18.47
	4437.00	9.70	279.06	N/A	-47.88	-307.52	4407.95	-290.05	-307.79	95.00	0.92	-0.03	5.42
	4531.00	9.78	283.12	N/A	-44.82	-323.12	4500.59	-197.41	-323.37	94.00	0.74	0.09	4.32
	4626.00	9.74	284.54	N/A	-40.97	-338.75	4594.22	-103.78	-338.98	95.00	0.26	-0.04	1.49
	4720.00	9.66	290.16	N/A	-36.26	-353.85	4686.88	-11.12	-354.06	94.00	1.01	-0.09	5.98
	4814.00	9.76	282.61	N/A	-31.80	-369.03	4779.53	81.53	-369.21	94.00	1.36	0.11	-8.03
	4909.00	9.65	269.69	N/A	-30.09	-384.85	4873.19	175.19	-385.02	95.00	2.29	-0.12	-13.60
	5003.00	9.60	272.81	N/A	-29.75	-400.56	4965.86	267.86	-400.73	94.00	0.56	-0.05	3.32
	5098.00	9.70	284.65	N/A	-27.33	-416.22	5059.53	361.53	-416.37	95.00	2.09	0.11	12.46
	5192.00	9.81	278.02	N/A	-24.21	-431.81	5152.17	454.17	-431.94	94.00	1.20	0.12	-7.05
	5286.00	9.86	262.44	N/A	-24.15	-447.72	5244.81	546.81	-447.85	94.00	2.82	0.05	-16.57
	5381.00	9.52	251.59	N/A	-27.71	-463.24	5338.46	640.46	-463.39	95.00	1.95	-0.36	-11.42
	5475.00	9.73	264.30	N/A	-30.95	-478.52	5431.15	733.15	-478.69	94.00	2.27	0.22	13.52
	5570.00	9.76	256.87	N/A	-33.58	-494.35	5524.78	826.78	-494.54	95.00	1.32	0.03	-7.82
	5664.00	9.75	253.31	N/A	-37.67	-509.73	5617.42	919.42	-509.94	94.00	0.64	-0.01	-3.79
	5759.00	9.86	249.38	N/A	-42.85	-525.05	5711.03	1013.03	-525.29	95.00	0.71	0.12	-4.14
	5854.00	3.66	208.11	N/A	-48.39	-534.11	5805.37	1107.37	-534.38	95.00	7.90	-6.53	-43.44
	5948.00	2.89	55.23	N/A	-49.69	-533.57	5899.31	1201.31	-533.85	94.00	6.78	-0.82	-162.64
	6043.00	14.24	62.16	N/A	-42.85	-521.23	5993.10	1295.10	-521.47	95.00	11.98	11.95	7.29
	6137.00	19.17	80.22	N/A	-34.81	-495.77	6083.17	1385.17	-495.96	94.00	7.56	5.24	19.21
	6232.00	25.97	92.14	N/A	-32.94	-459.55	6170.88	1472.88	-459.73	95.00	8.59	7.16	12.55
	6327.00	35.60	95.17	N/A	-36.21	-411.11	6252.41	1554.41	-411.31	95.00	10.26	10.14	3.19
	6421.00	46.38	96.17	N/A	-42.36	-349.85	6323.26	1625.26	-350.09	94.00	11.49	11.47	1.06
	6516.00	56.34	96.33	N/A	-50.43	-276.18	6382.50	1684.50	-276.47	95.00	10.49	10.48	0.17
	6610.00	67.48	95.50	N/A	-58.93	-193.83	6426.69	1728.69	-194.16	94.00	11.88	11.85	-0.88
	6705.00	72.78	90.92	N/A	-63.87	-104.68	6458.99	1760.99	-105.04	95.00	7.19	5.58	-4.82
	6799.00	80.85	87.06	N/A	-62.21	-13.27	6480.42	1782.42	-13.62	94.00	9.47	8.59	-4.11
	6894.00	88.86	87.88	N/A	-58.04	81.18	6488.93	1790.93	80.85	95.00	8.48	8.43	0.86
	6988.00	90.49	87.65	N/A	-54.37	175.10	6489.46	1791.46	174.79	94.00	1.75	1.73	-0.24
	7083.00	90.83	85.51	N/A	-48.71	269.92	6488.37	1790.37	269.64	95.00	2.28	0.36	-2.25
	7178.00	91.26	84.63	N/A	-40.55	364.56	6486.64	1788.64	364.32	95.00	1.03	0.45	-0.93
	7272.00	90.15	83.72	N/A	-31.01	458.06	6485.48	1787.48	457.87	94.00	1.53	-1.18	-0.97
	7367.00	90.28	85.70	N/A	-22.25	552.65	6485.12	1787.12	552.51	95.00	2.09	0.14	2.08
	7461.00	90.00	88.74	N/A	-17.69	646.53	6484.89	1786.89	646.42	94.00	3.25	-0.30	3.23
	7555.00	90.12	93.47	N/A	-19.50	740.48	6484.79	1786.79	740.36	94.00	5.03	0.13	5.03
	7650.00	89.88	95.02	N/A	-26.53	835.22	6484.79	1786.79	835.05	95.00	1.65	-0.25	1.63
	7744.00	89.97	93.76	N/A	-33.73	928.94	6484.92	1786.92	928.73	94.00	1.34	0.10	-1.34
	7839.00	90.37	90.86	N/A	-37.56	1023.85	6484.64	1786.64	1023.62	95.00	3.08	0.42	-3.05
	7934.00	89.94	89.21	N/A	-37.62	1118.85	6484.38	1786.38	1118.62	95.00	1.79	-0.45	-1.74
	8028.00	89.91	88.39	N/A	-35.65	1212.83	6484.50	1786.50	1212.60	94.00	0.87	-0.03	-0.87
	8123.00	89.94	88.32	N/A	-32.92	1307.79	6484.63	1786.63	1307.58	95.00	0.08	0.03	-0.07
	8217.00	90.28	89.20	N/A	-30.89	1401.77	6484.45	1786.45	1401.57	94.00	1.00	0.36	0.94
	8380.00	90.34	90.68	N/A	-30.72	1564.76	6483.56	1785.56	1564.56	163.00	0.91	0.04	0.91
	8475.00	90.25	89.20	N/A	-30.62	1659.76	6483.07	1785.07	1659.55	95.00	1.56	-0.09	-1.56
	8569.00	90.31	88.14	N/A	-28.43	1753.73	6482.61	1784.61	1753.54	94.00	1.13	0.06	-1.13
	8664.00	90.31	88.54	N/A	-25.68	1848.69	6482.10	1784.10	1848.51	95.00	0.42	0.00	0.42
	8758.00	90.18	87.61	N/A	-22.52	1942.63	6481.70	1783.70	1942.47	94.00	1.00	-0.14	-0.99
	8853.00	90.22	87.21	N/A	-18.23	2037.53	6481.37	1783.37	2037.40	95.00	0.42	0.04	-0.42
	8947.00	90.25	86.79	N/A	-13.31	2131.40	6480.98	1782.98	2131.29	94.00	0.45	0.03	-0.45
	9042.00	90.43	87.50	N/A	-8.58	2226.28	6480.42	1782.42	2226.20	95.00	0.77	0.19	0.75
	9136.00	90.43	87.64	N/A	-4.59	2320.20	6479.71	1781.71	2320.13	94.00	0.15	0.00	0.15
	9326.00	90.18	88.75	N/A	1.39	2510.10	6478.70	1780.70	2510.06	190.00	0.60	-0.13	0.58

	9420.00	90.31	89.35	N/A	2.95	2604.08	6478.30	1780.30	2604.06	94.00	0.65	0.14	0.64
	9515.00	90.25	89.10	N/A	4.23	2699.07	6477.83	1779.83	2699.05	95.00	0.27	-0.06	-0.26
	9609.00	90.49	90.12	N/A	4.87	2793.07	6477.23	1779.23	2793.05	94.00	1.11	0.26	1.09
	9704.00	90.37	90.26	N/A	4.56	2888.06	6476.51	1778.51	2888.04	95.00	0.19	-0.13	0.15
	9799.00	90.22	89.01	N/A	5.16	2983.06	6476.03	1778.03	2983.04	95.00	1.33	-0.16	-1.32
	9893.00	90.28	88.60	N/A	7.12	3077.04	6475.62	1777.62	3077.03	94.00	0.44	0.06	-0.44
	9988.00	90.25	88.93	N/A	9.17	3172.01	6475.18	1777.18	3172.01	95.00	0.35	-0.03	0.35
	10083.00	90.18	89.48	N/A	10.49	3267.00	6474.82	1776.82	3267.01	95.00	0.58	-0.07	0.58
	10177.00	90.25	89.58	N/A	11.26	3361.00	6474.47	1776.47	3361.01	94.00	0.13	0.07	0.11
	10272.00	90.22	89.89	N/A	11.70	3456.00	6474.08	1776.08	3456.01	95.00	0.33	-0.03	0.33
	10367.00	90.31	91.21	N/A	10.79	3550.99	6473.64	1775.64	3550.99	95.00	1.39	0.09	1.39
	10461.00	90.25	91.29	N/A	8.74	3644.97	6473.18	1775.18	3644.96	94.00	0.11	-0.06	0.09
	10556.00	90.25	91.19	N/A	6.68	3739.94	6472.76	1774.76	3739.92	95.00	0.11	0.00	-0.11
	10650.00	90.37	93.73	N/A	2.65	3833.85	6472.26	1774.26	3833.80	94.00	2.71	0.13	2.70
	10745.00	90.28	92.58	N/A	-2.58	3928.70	6471.72	1773.72	3928.62	95.00	1.21	-0.09	-1.21
	10839.00	90.31	86.23	N/A	-1.61	4022.65	6471.23	1773.23	4022.57	94.00	6.76	0.03	-6.76
	10934.00	90.15	85.47	N/A	5.27	4117.40	6470.85	1772.85	4117.36	95.00	0.82	-0.17	-0.80
	11029.00	90.25	84.23	N/A	13.80	4212.01	6470.52	1772.52	4212.02	95.00	1.31	0.11	-1.31
	11217.00	90.40	91.87	N/A	20.19	4399.76	6469.45	1771.45	4399.80	188.00	4.06	0.08	4.06
	11312.00	90.31	96.45	N/A	13.30	4494.48	6468.86	1770.86	4494.48	95.00	4.82	-0.09	4.82
	11406.00	90.18	99.56	N/A	0.21	4587.55	6468.46	1770.46	4587.48	94.00	3.31	-0.14	3.31
	11501.00	90.22	100.46	N/A	-16.30	4681.11	6468.13	1770.13	4680.93	95.00	0.95	0.04	0.95
	11595.00	90.37	97.11	N/A	-30.66	4773.99	6467.64	1769.64	4773.73	94.00	3.57	0.16	-3.56
	11690.00	90.31	90.46	N/A	-36.92	4868.73	6467.08	1769.08	4868.43	95.00	7.00	-0.06	-7.00
	11784.00	90.12	85.85	N/A	-33.90	4962.65	6466.73	1768.73	4962.37	94.00	4.91	-0.20	-4.90
	11879.00	90.09	86.72	N/A	-27.74	5057.45	6466.55	1768.55	5057.21	95.00	0.92	-0.03	0.92
	11974.00	90.06	86.23	N/A	-21.90	5152.27	6466.43	1768.43	5152.06	95.00	0.52	-0.03	-0.52
	12068.00	90.09	86.73	N/A	-16.13	5246.09	6466.31	1768.31	5245.91	94.00	0.53	0.03	0.53
	12163.00	90.22	87.47	N/A	-11.32	5340.97	6466.05	1768.05	5340.82	95.00	0.79	0.14	0.78
	12257.00	90.37	87.62	N/A	-7.30	5434.88	6465.56	1767.56	5434.75	94.00	0.23	0.16	0.16
	12352.00	90.31	86.46	N/A	-2.39	5529.75	6465.00	1767.00	5529.65	95.00	1.22	-0.06	-1.22
	12446.00	90.28	84.95	N/A	4.65	5623.48	6464.52	1766.52	5623.42	94.00	1.61	-0.03	-1.61
	12541.00	90.28	84.06	N/A	13.74	5718.05	6464.05	1766.05	5718.03	95.00	0.94	0.00	-0.94
	12636.00	90.25	84.04	N/A	23.59	5812.53	6463.61	1765.61	5812.57	95.00	0.04	-0.03	-0.02
	12730.00	90.22	84.93	N/A	32.63	5906.10	6463.23	1765.23	5906.19	94.00	0.95	-0.03	0.95
	12825.00	90.12	88.26	N/A	38.27	6000.91	6462.95	1764.95	6001.04	95.00	3.51	-0.11	3.51
	12919.00	89.97	87.80	N/A	41.50	6094.86	6462.87	1764.87	6095.00	94.00	0.51	-0.16	-0.49
	13014.00	90.28	87.32	N/A	45.54	6189.77	6462.66	1764.66	6189.93	95.00	0.60	0.33	-0.51
	13109.00	90.15	89.26	N/A	48.38	6284.72	6462.31	1764.31	6284.90	95.00	2.05	-0.14	2.04
	13203.00	90.18	90.56	N/A	48.53	6378.72	6462.04	1764.04	6378.90	94.00	1.38	0.03	1.38
	13298.00	89.82	88.53	N/A	49.28	6473.71	6462.04	1764.04	6473.89	95.00	2.17	-0.38	-2.14
	13392.00	90.25	88.45	N/A	51.76	6567.68	6461.98	1763.98	6567.87	94.00	0.47	0.46	-0.09
	13487.00	90.12	89.06	N/A	53.82	6662.66	6461.67	1763.67	6662.86	95.00	0.66	-0.14	0.64
	13581.00	90.12	89.17	N/A	55.27	6756.65	6461.48	1763.48	6756.85	94.00	0.12	0.00	0.12
	13676.00	90.09	89.97	N/A	55.99	6851.64	6461.30	1763.30	6851.85	95.00	0.84	-0.03	0.84
	13770.00	90.15	91.03	N/A	55.17	6945.64	6461.11	1763.11	6945.84	94.00	1.13	0.06	1.13
	13865.00	90.34	91.57	N/A	53.01	7040.61	6460.70	1762.70	7040.80	95.00	0.60	0.20	0.57
	13960.00	90.46	92.08	N/A	49.98	7135.56	6460.04	1762.04	7135.73	95.00	0.55	0.13	0.54
Projection	13990.00	90.46	92.08	N/A	48.90	7165.54	6459.80	1761.80	7165.70	30.00	0.00	0.00	0.00