

SALT RANCH FEE 202-1015H

SURFACE LOCATION

NW. COR.
SEC. 10, T11N, R64W
FOUND 2 1/2" GLO
BRASS CAP

S 89°01'52" W 5343.24' (M)

NE. COR.
SEC. 10, T11N, R64W
FOUND 3 1/4" ALUM. CAP
L.S. NO. 34995

N 05°54'33" W 2742.20' (M)

N 06°12'35" W 2738.40' (C)

HEEL LOCATION

735'
357'
637'
1011'

N 05°56'28" W 2732.24' (M)

W. 1/4 COR.
SEC. 10, T11N, R64W
FOUND 2 1/2" GLO
BRASS CAP

S 88°55'24" W 2685.62' (C)

10
T11N, R64W

S 88°55'24" W 2658.30' (C)

E. 1/4 COR.
SEC. 10, T11N, R64W
FOUND 3 1/4" ALUM. CAP
L.S. NO. 34995

N 07°03'38" W 2690.93' (M)

N 06°12'35" W 2710.14' (C)

SURFACE LOCATION: NAD 83
GROUND ELEVATION= 5433.9'
LATITUDE= 40.942192°
LONGITUDE= -104.525906°
LATITUDE= 40°56'31.891"
LONGITUDE= -104°31'33.261"
HEEL LOCATION: NAD 83
LATITUDE= 40.941149°
LONGITUDE= -104.527134°
LATITUDE= 40°56'28.135"
LONGITUDE= -104°31'37.684"
BOTTOM HOLE LOCATION: NAD 83
LATITUDE= 40.914459°
LONGITUDE= -104.525760°
LATITUDE= 40°54'52.053"
LONGITUDE= -104°31'32.735"

S 02°51'58" E 9732' GRID
S 02°14'12" E TRUE
S 10°19'58" E MAGNETIC

N 05°56'33" W 2732.12' (M)

SW. COR.
SEC. 10, T11N, R64W
FOUND 2 1/2" ALUM. CAP
L.S. NO. 17492

S 89°25'16" W 5295.33' (M)

SE. COR.
SEC. 10, T11N, R64W
FOUND 3 1/4" ALUM. CAP
L.S. NO. 34995

MATCH LINE
SEE SHEET 2

WELLBORE CONTINUES
INTO SECTION 15

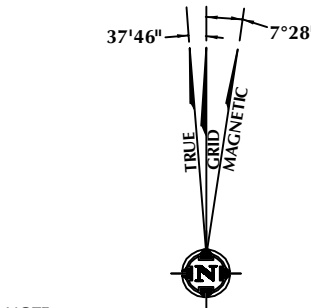
CERTIFICATE OF SURVEYOR:

THIS IS TO CERTIFY THAT THE ABOVE PLAT WAS PREPARED FROM FIELD NOTES OF ACTUAL SURVEYS MADE BY ME OR UNDER MY SUPERVISION AND THAT THE SAME ARE TRUE AND CORRECT TO THE BEST OF MY KNOWLEDGE AND BELIEF. THIS CERTIFICATE DOES NOT REPRESENT A LAND SURVEY PLAT OR IMPROVEMENT SURVEY PLAT AS DEFINED BY C.S. 38-5-102 AND CANNOT BE RELIED UPON TO DETERMINE OWNERSHIP.

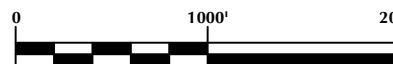
Randall K. French
38512
PROFESSIONAL LAND SURVEYOR
10/4/17

RANDALL K. FRENCH
PROFESSIONAL LAND SURVEYOR
COLORADO REGISTRATION NUMBER 38512

NOTICE:
ACCORDING TO COLORADO STATE LAW YOU MUST COMMENCE LEGAL ACTION BASED UPON ANY DEFECT IN THIS SURVEY WITHIN THREE YEARS AFTER YOU FIRST DISCOVER SUCH DEFECT. IN NO EVENT MAY ANY ACTION BASED UPON ANY DEFECT IN THIS SURVEY BE COMMENCED MORE THAN TEN YEARS FROM THE DATE ON THE CERTIFICATION SHOWN HEREON.



NOTE:
MAGNETIC NORTH IS CURRENT AS OF 9/21/2017.
MAGNETIC NORTH CHANGES WEST 0°06' PER YEAR.



SCALE: 1" = 1000'

NOTES:

- ▲ INDICATES SECTION CORNER
- INDICATES CALCULATED CORNER
- ELEVATION BASED ON NAVD88 (GEOID12B)
- BASIS OF BEARING DERIVED FROM COLORADO COORDINATE SYSTEM OF 1983 NORTH ZONE.
- ALL MEASURED DISTANCES ARE GRID.
COMBINED SCALE FACTOR: .99977282 CALCULATED FROM THE E. 1/4 CORNER OF SECTION 10, T11N, R64W
OPERATOR: CODY WITT / PDOP = 1.6
- SEE ADDENDUM TO WELL LOCATION CERTIFICATE FOR EXISTING IMPROVEMENTS WITHIN 500' OF THE WELL PAD.
- WELL FOOTAGES ARE MEASURED AT RIGHT ANGLES TO THE SECTION LINES.
- THE BOTTOM OF HOLE BEARS S02°51'58"E, 9732' FROM THE HEEL LOCATION.

WELL PAD - SALT RANCH FEE 202-1015H

SALT RANCH FEE 202-1015H
WELL LOCATION CERTIFICATE
357' FNL & 637' FEL NENE (SURFACE)
735' FNL & 1011' FEL NENE (HEEL)
LOCATED IN SECTION 10
300' FSL & 1022' FEL SESE (BOTTOM)
LOCATED IN SECTION 15
T11N, R64W, 6TH P.M.
WELD COUNTY, COLORADO



CLEAR CREEK
Resource Partners

717 17th Street, Suite 1525
Denver, Colorado 80202



CONSULTING, LLC

SHERIDAN OFFICE
1095 Saberton Avenue
Sheridan, Wyoming 82801
Phone 307-674-0609

LOVELAND OFFICE
1635 Foxtrail Drive, Suite 204
Loveland, Colorado 80538
Phone 970-776-4331

DRAFTED BY:	LMO	CHECKED BY:	RKF	SHEET NO:
DATE DRAFTED:	10/4/17	DATE SURVEYED:	9/8/17	1
REVISED:		FILE NAME:	17-127	1 OF 2

T11N, R64W

NW. COR.
SEC. 15, T11N, R64W
FOUND 2 1/2" ALUM. CAP
L.S. NO. 17492

S 89°25'16" W 5295.33' (M)

NE. COR.
SEC. 15, T11N, R64W
FOUND 3 1/4" ALUM. CAP
L.S. NO. 34995

MATCH LINE
SEE SHEET 1

SURFACE LOCATION: NAD 83
GROUND ELEVATION= 5433.9'
LATITUDE= 40.942192°
LONGITUDE= -104.525906°
LATITUDE= 40°56'31.891"
LONGITUDE= -104°31'33.261"
HEEL LOCATION: NAD 83
LATITUDE= 40.941149°
LONGITUDE= -104.527134°
LATITUDE= 40°56'28.135"
LONGITUDE= -104°31'37.684"
BOTTOM HOLE LOCATION: NAD 83
LATITUDE= 40.914459°
LONGITUDE= -104.525760°
LATITUDE= 40°54'52.053"
LONGITUDE= -104°31'32.735"

W. 1/4 COR.
SEC. 15, T11N, R64W
FOUND 2 1/2" GLO
BRASS CAP

S 89°20'50" W
2675.58' (C)

15

S 89°20'50" W
2675.94' (C)

N 01°09'47" E 2670.61' (M)

N 00°33'15" E
2668.33' (C)

S 02°51'58" E 9732' GRID
S 02°14'12" E TRUE
S 10°19'58" E MAGNETIC

N 00°03'11" W 5321.29' (M)

SW. COR.
SEC. 15, T11N, R64W
FOUND 2 1/2" ALUM. CAP
L.S. NO. 17492

S 89°18'53" W 2703.99' (M)

S. 1/4 COR.
SEC. 15, T11N, R64W
FOUND 2 1/2" ALUM. CAP
P.L.S. NO. 28285

S 89°11'38" W 2704.31' (M)

SE. COR.
SEC. 15, T11N, R64W
FOUND 2 1/2" GLO
BRASS CAP

BOTTOM OF HOLE:
300' FSL & 1022' FEL

1679'

1022'

300'

37'46" 7°28"



CERTIFICATE OF SURVEYOR:

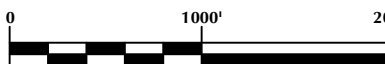
THIS IS TO CERTIFY THAT THE ABOVE PLAT WAS PREPARED FROM FIELD NOTES OF ACTUAL SURVEYS MADE BY ME OR UNDER MY SUPERVISION AND THAT THE SAME ARE TRUE AND CORRECT TO THE BEST OF MY KNOWLEDGE AND BELIEF. THIS CERTIFICATE DOES NOT REPRESENT A LAND SURVEY PLAT OR IMPROVEMENT SURVEY PLAT AS DEFINED BY C.R.S. 38-5-102 AND CANNOT BE RELIED UPON TO DETERMINE OWNERSHIP.

Randall K. French
38512
PROFESSIONAL LAND SURVEYOR

RANDALL K. FRENCH
PROFESSIONAL LAND SURVEYOR
COLORADO REGISTRATION NUMBER 38512

NOTICE:
ACCORDING TO COLORADO STATE LAW YOU MUST COME TO COURT FOR LEGAL ACTION BASED UPON ANY DEFECT IN THIS SURVEY WITHIN THREE YEARS AFTER YOU FIRST DISCOVER SUCH DEFECT. IN NO EVENT MAY ANY ACTION BASED UPON ANY DEFECT IN THIS SURVEY BE COMMENCED MORE THAN TEN YEARS FROM THE DATE ON THE CERTIFICATION SHOWN HEREON.

NOTE:
MAGNETIC NORTH IS CURRENT AS OF 9/21/2017.
MAGNETIC NORTH CHANGES WEST 0°06' PER YEAR.



SCALE: 1" = 1000'

NOTES:

- ▲ INDICATES SECTION CORNER
- INDICATES CALCULATED CORNER
- ELEVATION BASED ON NAVD88 (GEOID12B)
- BASIS OF BEARING DERIVED FROM COLORADO COORDINATE SYSTEM OF 1983 NORTH ZONE.
- ALL MEASURED DISTANCES ARE GRID.
COMBINED SCALE FACTOR: .99977282 CALCULATED FROM THE E. 1/4 CORNER OF SECTION 10, T11N, R64W
OPERATOR: CODY WITT / PDOP = 1.6
- SEE ADDENDUM TO WELL LOCATION CERTIFICATE FOR EXISTING IMPROVEMENTS WITHIN 500' OF THE WELL PAD.
- WELL FOOTAGES ARE MEASURED AT RIGHT ANGLES TO THE SECTION LINES.
- THE BOTTOM OF HOLE BEARS S02°51'58"E, 9732' FROM THE HEEL LOCATION.

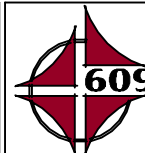
WELL PAD - SALT RANCH FEE 202-1015H

SALT RANCH FEE 202-1015H
WELL LOCATION CERTIFICATE
357' FNL & 637' FEL NENE (SURFACE)
735' FNL & 1011' FEL NENE (HEEL)
LOCATED IN SECTION 10
300' FSL & 1022' FEL SESE (BOTTOM)
LOCATED IN SECTION 15
T11N, R64W, 6TH P.M.
WELD COUNTY, COLORADO



CLEAR CREEK
Resource Partners

717 17th Street, Suite 1525
Denver, Colorado 80202



CONSULTING, LLC

SHERIDAN OFFICE
1095 Saberton Avenue
Sheridan, Wyoming 82801
Phone 307-674-0609

LOVELAND OFFICE
1635 Foxtrail Drive, Suite 204
Loveland, Colorado 80538
Phone 970-776-4331

DRAFTED BY:	LMO	CHECKED BY:	RKF	SHEET NO:
DATE DRAFTED:	10/4/17	DATE SURVEYED:	9/8/17	2
REVISED:		FILE NAME:	17-127	2 OF 2