

Inspection Photos

10/18/2017

Operator: DENVER EAST MACHINERY COMPANY
- 24040

Location ID: 390528

Inspection Doc. Number: 682502721

Logan County, CO

Aaron Trujillo
NE Reclamation Specialist
COGCC

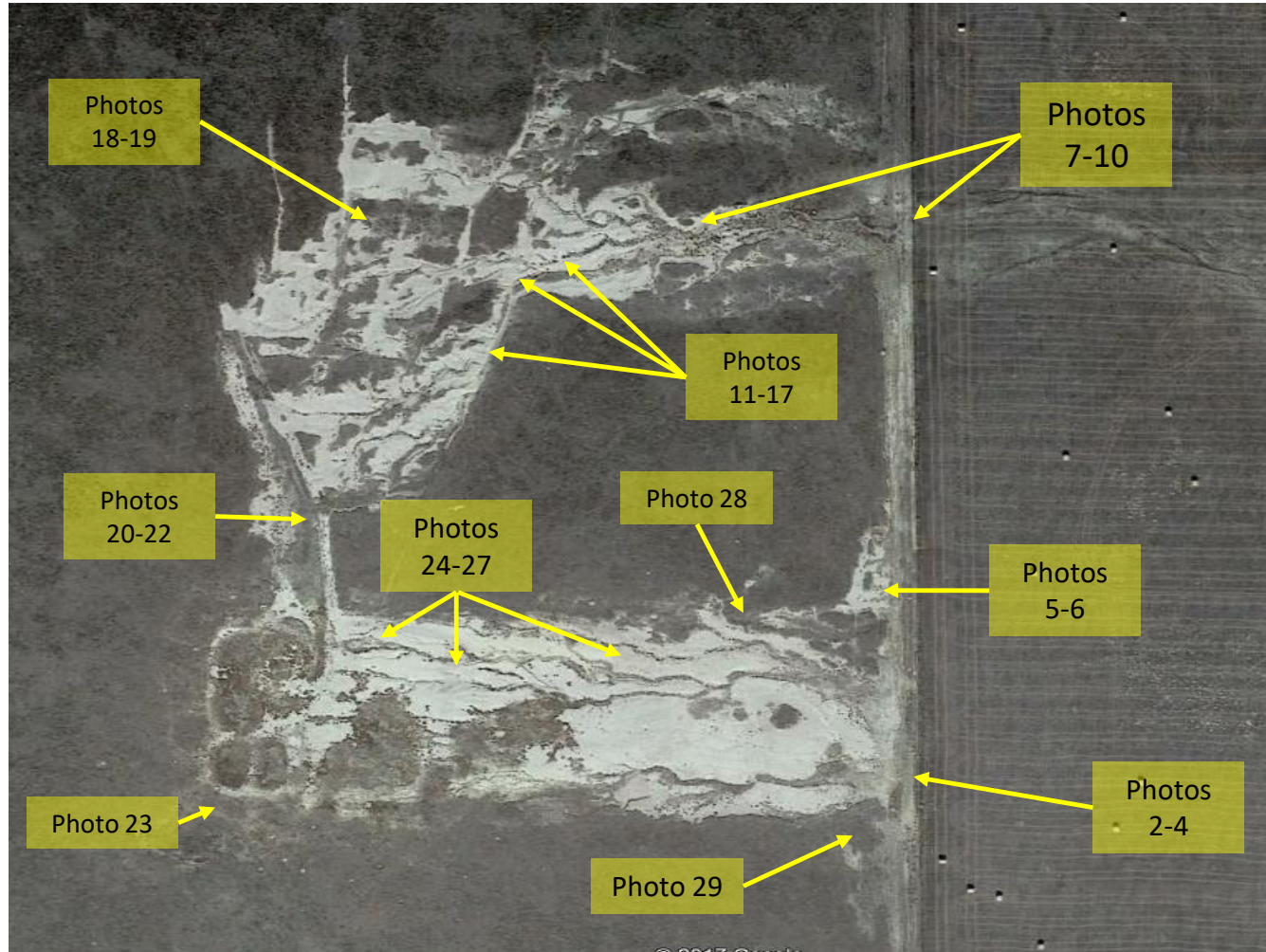


Photo 1: Current (2015) available aerial imagery. Photo shows overview of location and areas where the following photos were taken from.

Inspection Photos

Operator: DENVER EAST MACHINERY COMPANY - 24040

Location ID: 390528



Photo 2: Photos 2-4 show a “panoramic image” taken from the southeast end of the disturbance area, beginning facing west and moving to the north, showing an overview of the disturbance area.



Photo 3: Photo taken from the southeast end, facing northwest.

Inspection Photos

Operator: DENVER EAST MACHINERY COMPANY - 24040

Location ID: 390528



Photo 4: Photo taken from the southeast end, facing north.



Photo 5: Photo taken from the east end of the location, facing west. Photo shows what appears to be a berm, with rock aggregate at the base to trap sediment. Aggregate appears to have filled with sediment in areas. Portions of the BMP on the east end (see photo 6) have eroded out.

Inspection Photos

Operator: DENVER EAST MACHINERY COMPANY - 24040

Location ID: 390528



Photo 6: Photo taken from the east end of the location, facing southwest. Continued from photo 5. Photo shows area of the BMP that has been eroded out.



Photo 7: Photo taken from the east end of the disturbance, facing north. Photo shows silt fence BMP that is in disrepair and no longer in proper functioning condition.

Inspection Photos

Operator: DENVER EAST MACHINERY COMPANY - 24040

Location ID: 390528



Photo 8: Photo taken from the east end of the disturbance, facing north. Photo shows silt fence BMP that is in disrepair and no longer in proper functioning condition. Photo also shows gulley erosion beginning to reform and lead onto adjacent lands.

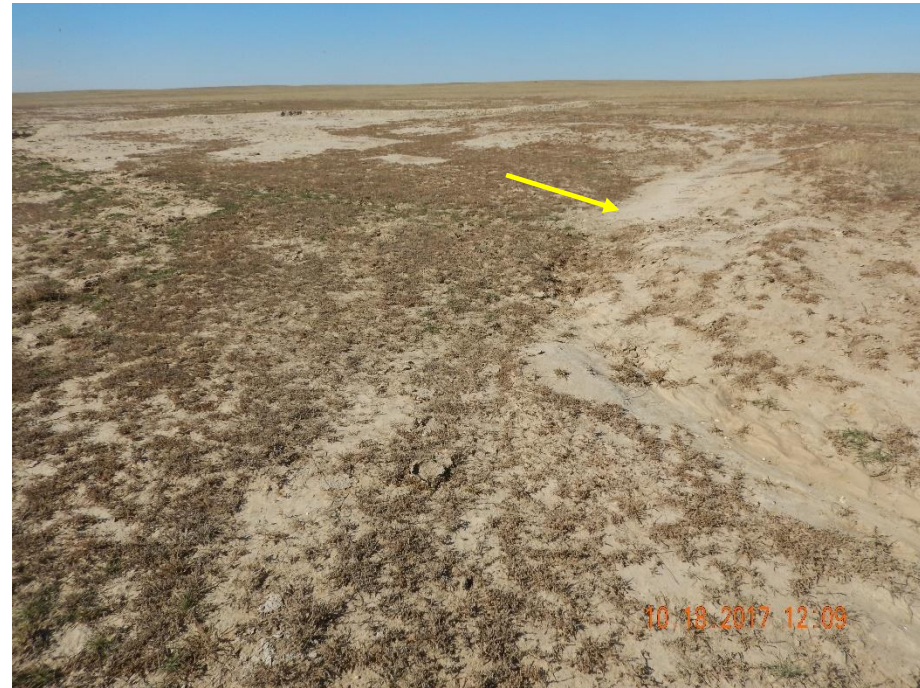


Photo 9: Photo taken from the northeast end of the disturbance, facing west. Photo shows sotrmwater erosion degradation reoccurring on the site.

Inspection Photos

Operator: DENVER EAST MACHINERY COMPANY - 24040

Location ID: 390528



Photo 10: Photo taken from the northeast end of the disturbance, facing west

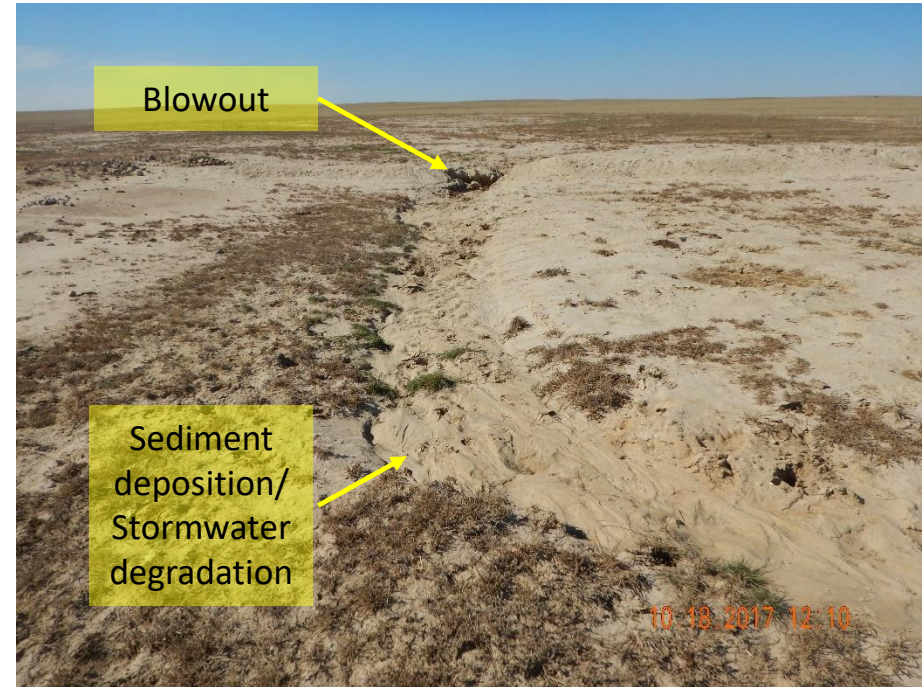


Photo 11: Photo taken from the north end of the disturbance, facing west. Photo shows what appears to be a berm used to pond stormwater installed by the operator no longer in proper functioning conduction. The berm has been blown out towards it's center, with stormwater causing degradation below grade. It does not appear BMP had been constructed with an appropriate spillway.

Inspection Photos

Operator: DENVER EAST MACHINERY COMPANY - 24040

Location ID: 390528



Photo 12: Photo taken from the south end of the south end of the catchment BMP seen in photo 11.

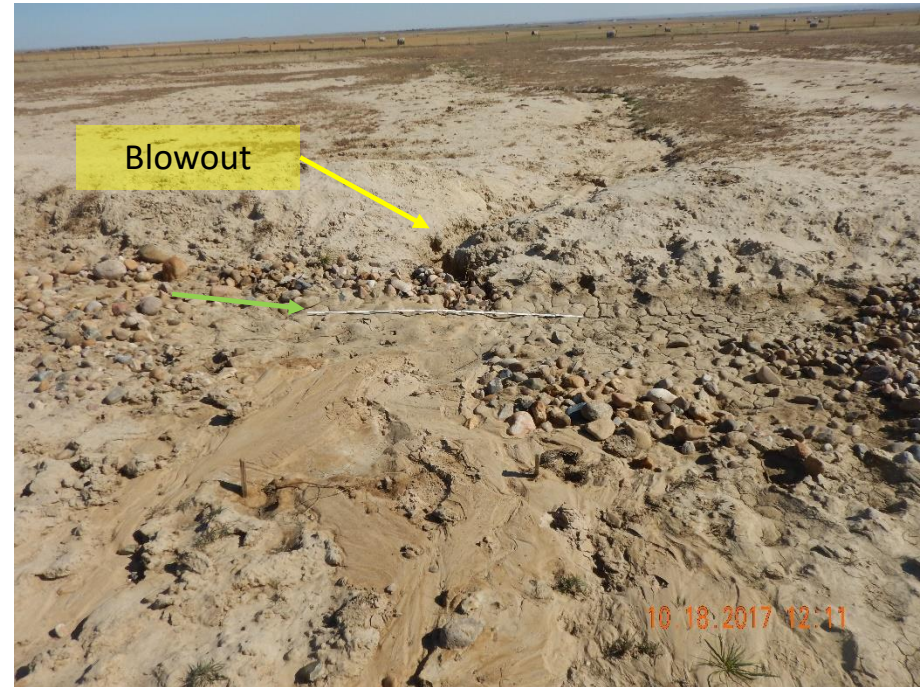


Photo 13: Photo taken from the west end of berm seen in photo 11, facing east. Photo shows sediment deposition has filled the rock aggregate lined at the base of the BMP. Photo also shows area where stormwater has blown out the dam. 6 foot measuring stick (green arrow) used for reference.

Inspection Photos

Operator: DENVER EAST MACHINERY COMPANY - 24040

Location ID: 390528



Photo 14: Closer look at blowout seen in previous photos. 6 foot measuring stick for reference.



Photo 15: Photo taken from the south end of the berm in photos 11-14, facing south. Photo shows a drainage where operator had installed straw wattles. Wattles observed here were in disrepair and no longer in proper functioning condition. Stormwater BMPs have not been maintained.

Inspection Photos

Operator: DENVER EAST MACHINERY COMPANY - 24040

Location ID: 390528



Photo 16: Additional photos continued from photo 15 showing straw wattle BMPs in disrepair. These wattles are now debris and needs to be repaired or removed and properly disposed.



Photo 17: Continued from photo 16. Photo show straw wattle in disrepair.

Inspection Photos

Operator: DENVER EAST MACHINERY COMPANY - 24040

Location ID: 390528

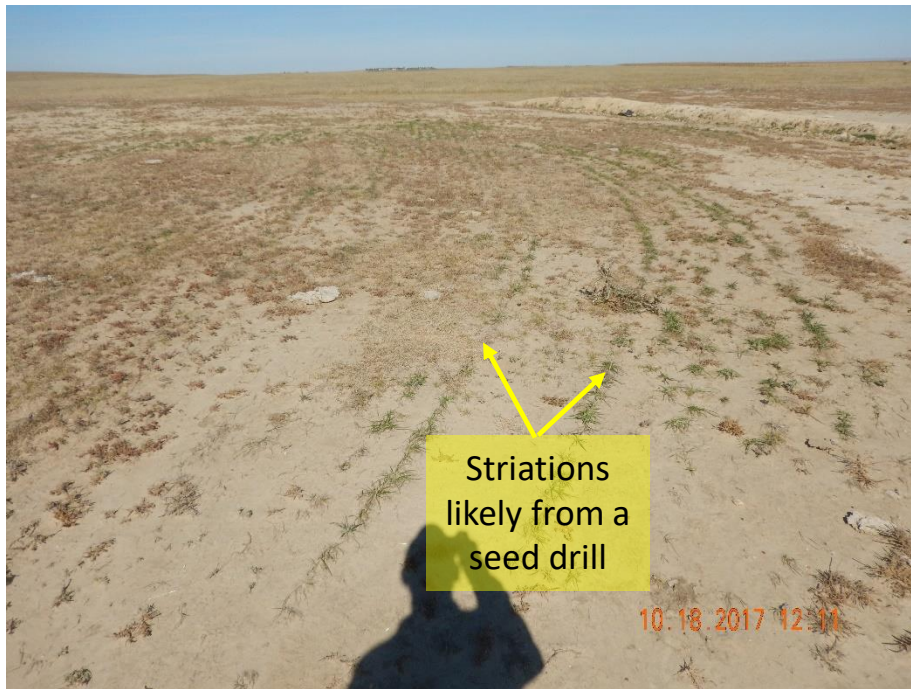


Photo 18: Photo taken from the north end of the disturbance area, facing north. Photo shows striations in the soil indicating areas of the site had previously been seeded. Though some germination is evident, it does not appear the site as a whole is progressing towards reclamation requirements.



Photo 19: Photo taken from the north end of the disturbance area. Photo shows water movement patterns, and stormwater erosion beginning to reform shallow gulleys and degrading the site. 6 foot measuring stick for reference

Inspection Photos

Operator: DENVER EAST MACHINERY COMPANY - 24040

Location ID: 390528



Photo 20: Photos 20- 21 show a “panoramic image” taken from the central, west end of the disturbance area, facing north moving to the northeast. Photos show overview of the disturbance area. Photo shows that despite a previous seeding, and additional reclamation activities earlier conducted by the operator, the location does not appear to be progressing towards COGCC 1000 series reclamation requirements.



Photo 21: Continued from photo 20.

Inspection Photos

Operator: DENVER EAST MACHINERY COMPANY - 24040

Location ID: 390528



Photo 22: Photo taken from the central, west end of the disturbance area, facing south. See comments under photo 20

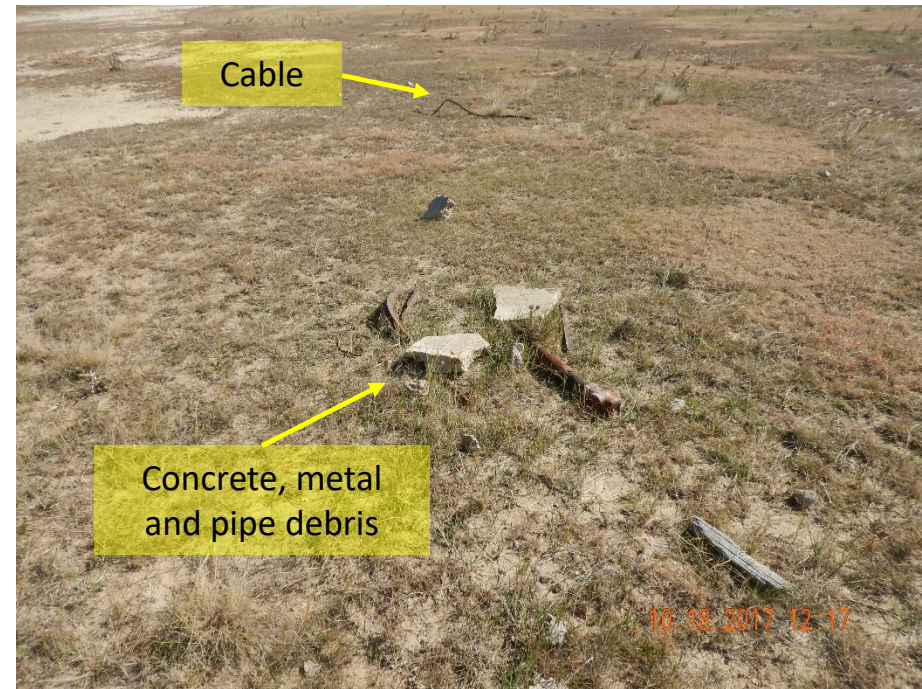


Photo 23: Photo taken from the southwest area of the disturbance, and the well location. Inspection #682501119 identified and documented this debris and required its removal. Refer to photos 9-11 in this inspection's photo document (#682501120). Debris has not been removed per the corrective action.

Inspection Photos

Operator: DENVER EAST MACHINERY COMPANY - 24040

Location ID: 390528

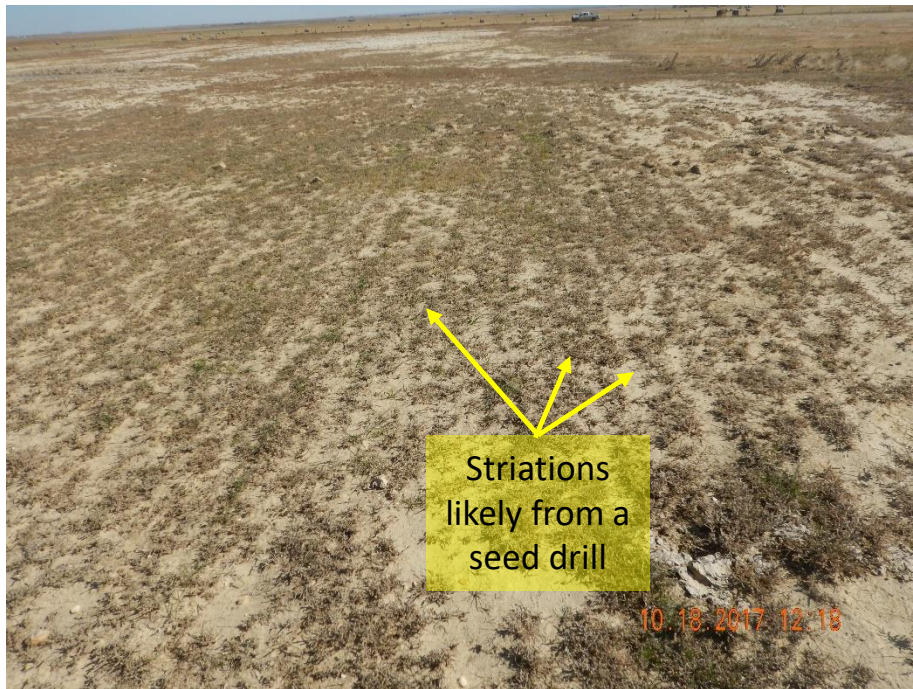


Photo 24: Photo taken from the southwest end of the disturbance area, facing east. Photo shows striations in the soil indicating areas of the site had previously been seeded. It does not appear the site as a whole is progressing towards reclamation requirements. Vegetation seen in the photo is predominantly undesirable weedy plant species such as Kochia and Russian thistle.



Photo 25: Photo taken from the south end of the disturbance, facing north. Photo shows what appears to be a berm used to pond stormwater installed by the operator. Rock aggregate at base of BMP has filled with sediment.

Inspection Photos

Operator: DENVER EAST MACHINERY COMPANY - 24040

Location ID: 390528



Photo 26: Photo taken from the north end of the BMP in photo 25, facing south.

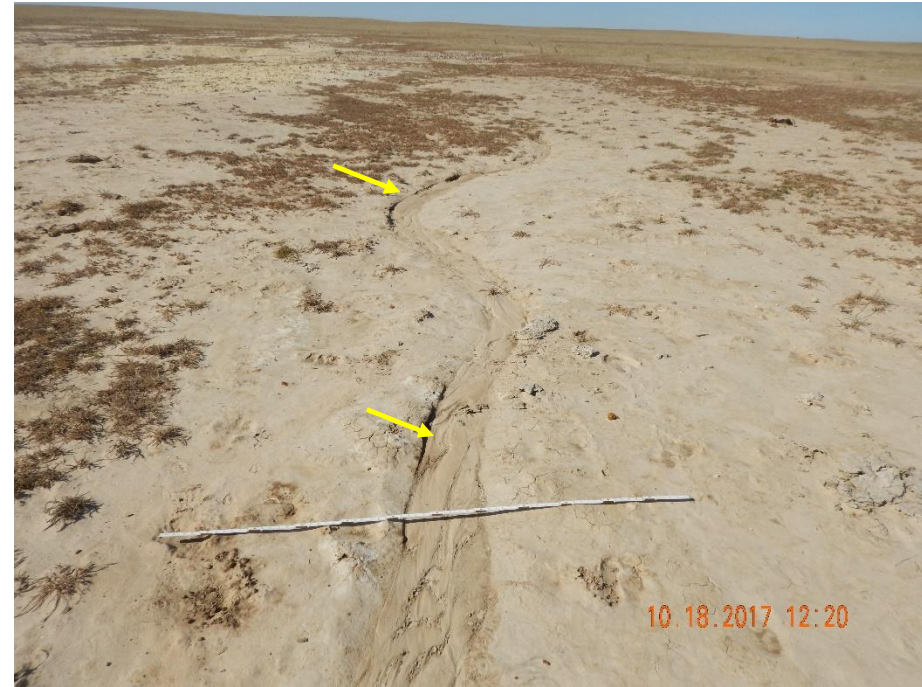


Photo 27: Photo taken from the southern end of the disturbance area, facing west. Photo shows water movement patterns, and stormwater erosion beginning to reform shallow gulleys and degrading the site. 6 foot measuring stick for reference

Inspection Photos

Operator: DENVER EAST MACHINERY COMPANY - 24040

Location ID: 390528



Photo 28: Photo taken from the north end , of the degradation area towards the south of the site (refer to photo 1). Photo shows pipe debris remaining on location.



Photo 29: Photo taken from the southeast end of the disturbance. Photo shows trash debris. Netting, stakes and twine seen here likely remaining from materials brought in (matting, straw wattles, etc...) by the operator during reclamation and stormwater management activities. This needs to be removed and properly disposed.