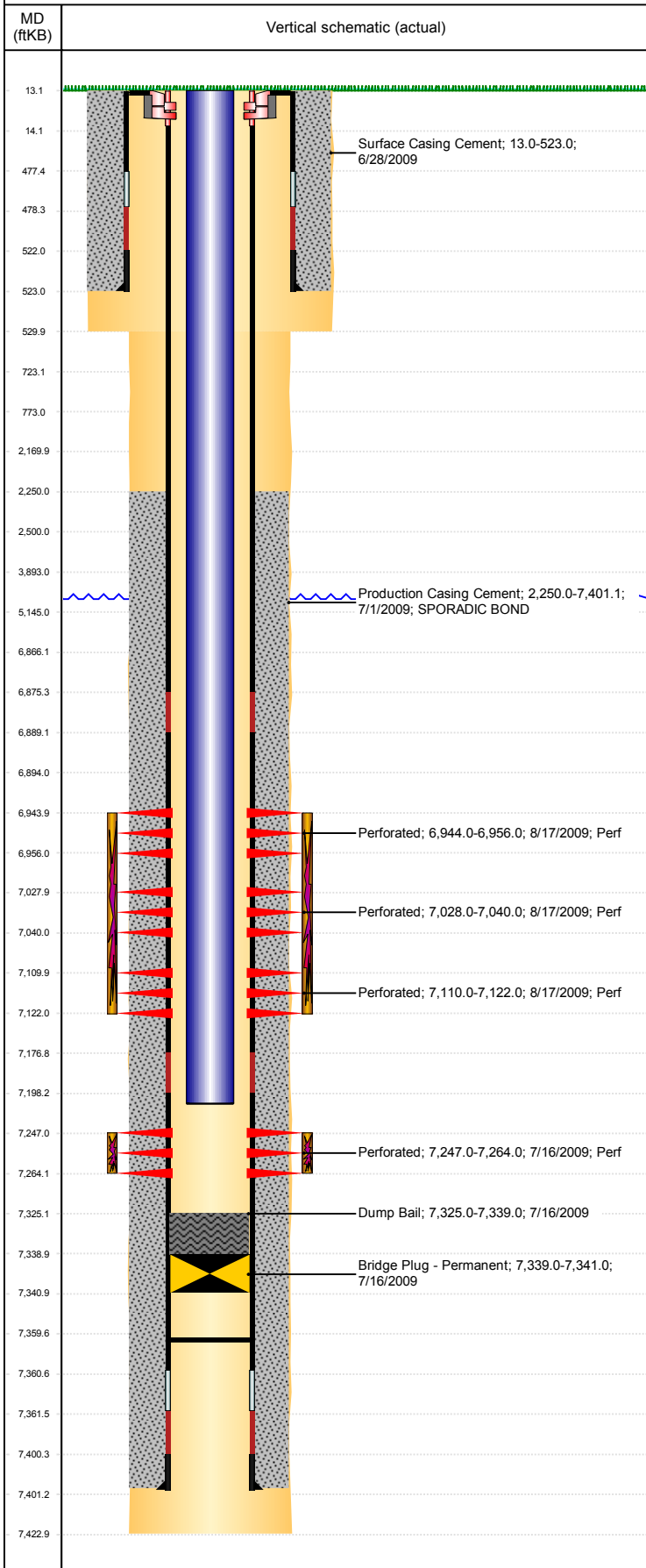


Well Name: ZABKA K20-17

VERTICAL - ORIGINAL HOLE, 10/19/2017 11:11:38 AM



Well Header											
API 05-123-29852		BU DJ BASIN		District 15		Well Config VERTICAL		Spud Date 6/28/2009		P & A Date	
Well Report Center 425699250				Production Route Watt - A1-02				Well Production Status SI			SoRT No
Original KB Elevation (ft) 4,758		KB - GL / MSL (ftKB) 13.00			Actual Latitude (°) 40.30064556			Actual Longitude (°) -104.79656202			
Comment											
Directions To Well FROM HWY 256 AND COUNTY ROAD 29, SOUTH 0.25 MILE, WEST 0.25 MILE, SOUTH 150 FEET TO LOCATION.											
Surface Location (Congressional)											
Qtr 3 SE	Qtr 4 NE	Section 20	Twntshp 4	Twntshp N	Range 66	Rng E/W W	Actual Latitude (°) 40.30064556		Actual Longitude (°) -104.79656202		
Zone Statuses											
Zone Name		Status Date		Status	Fluid Type		Job			Prod Method	
NIOBRARA		8/18/2009		PR			DRILLING/COMPLETION - ORIGINAL, 6/28/2009...				
CODELL		8/18/2009		PR			DRILLING/COMPLETION - ORIGINAL, 6/28/2009...				
Plug Back Total Depth (Most Recent Record)											
Date		Depth (ftKB)		Method			Com				
12/28/2009		7,359.7		TUBING TALLY			238 JTS RIH, 95.73' OF RAT HOLE DIDN'T TAG				
Wellbore Sections											
Section Des				Size (in)		Act Top, MD (ftKB)			Act Btm, MD (ftKB)		
SURFACE				12 1/4		13			530		
PRODUCTION				7 7/8		530			7,423		
Casing Strings											
Csg Des			Run Date		OD (in)	Wt/Len (lb/ft)	Grade	Top, MD (ftKB)		MD (ftKB)	
Surface			6/28/2009		8 5/8	24.00	J-55	13.0		523.0	
Production			7/1/2009		4 1/2	11.60	L-80	13.0		7,401.1	
Cement Stages											
Description					Start Date		Top Depth (ftKB)		Btm (ftKB)		
Surface Casing Cement					6/28/2009		13.0		523.0		
Description					Start Date		Top Depth (ftKB)		Btm (ftKB)		
Production Casing Cement					7/1/2009		2,250.0		7,401.1		
Description					Start Date		Top Depth (ftKB)		Btm (ftKB)		
Dump Bail					7/16/2009		7,325.0		7,339.0		
Tubing Strings											
Tubing Description				Set Depth (ft...)		Run Date		Pull Date		Prop...	
Tubing - Production				7,212.1		12/29/2009		10/19/2017		Yes	
Tubing Components											
Item Description				OD (in)	ID (in)	Wt (lb/ft)	Grade	Length (ft)		Joints	
Tubing				2 3/8	2.00	4.70	J-55	7,199.41		233	
Item Description				OD (in)	ID (in)	Wt (lb/ft)	Grade	Length (ft)		Joints	
Pump Seating Nipple				2 3/8	2.00	4.70	J-55	0.83		1	
Item Description				OD (in)	ID (in)	Wt (lb/ft)	Grade	Length (ft)		Joints	
Notched collar				2 3/8	2.00	4.70	J-55	0.83		1	
Perforation Data											
Linked Zone			Bnch/Stg	Sum of Entered Shot Total		Top (ftKB)		Btm (ftKB)		Date	
NIOBRARA, ORIGINAL HOLE			A	24		6,944.00		6,956.00		8/17/2009	
NIOBRARA, ORIGINAL HOLE			B	24		7,028.00		7,040.00		8/17/2009	
NIOBRARA, ORIGINAL HOLE			C	24		7,110.00		7,122.00		8/17/2009	
CODELL, ORIGINAL HOLE				68		7,247.00		7,264.00		7/16/2009	
Total (Sum)				140							
Other In Hole											
Run Date		Des				OD (in)		Top (ftKB)		Btm (ftKB)	
7/16/2009		Bridge Plug - Permanent				4		7,339.0		7,341.0	
Logs											
Date		Type					Top, MD (ftKB)		Btm, MD (ftKB)		
7/1/2009		Caliper/Comp. Density/Neutron/GR/SP/ML					2,300.0		7,417.0		
7/1/2009		DIL/GR/SP/Caliper					522.0		7,417.0		
7/16/2009		CBL/CCL/GR					1,490.0		7,340.0		