

HALLIBURTON

iCem[®] Service

TERRA ENERGY PARTNERS

For: Terra

Date: May 25, 2017

TR 321-23-597 Surface PJR

API# 05-045-23463-00

Sincerely,

Grand Junction Cement Engineering

1.0 Real-Time Job Summary

1.1 Job Event Log

Type	Seq. No.	Graph Label	Date	Time	Source	DH Density (ppg)	Comb Pump Rate (bbl/min)	Pump Stg Tot (bbl)	DS Pump Press (psi)	Comments
Event	1	Call Out	5/25/2017	08:30:11	USER					
Event	2	Pre-Convoy Safety Meeting	5/25/2017	11:00:00	USER					WITH ALL HES EMPLOYEES.
Event	3	Depart from Service Center or Other Site	5/25/2017	11:30:11	USER					
Event	4	Arrive At Loc	5/25/2017	15:10:11	USER					RIG IS ON BOTTOM CIRCULATING UPON ARRIVAL TO LOCATION.
Event	5	Assessment Of Location Safety Meeting	5/25/2017	15:20:11	USER					WITH ALL HES EMPLOYEES.
Event	6	Spot Equipment	5/25/2017	15:35:32	USER					1-F-550 PU. 1-ELITE CEMENT PUMP. 1-660 BULK TRUCK. 1 SUPERFLUSH TRANSPORT.
Event	7	Pre-Rig Up Safety Meeting	5/25/2017	15:45:54	USER					WITH ALL HES EMPLOYEES.
Event	8	Rig-Up Equipment	5/25/2017	15:55:21	USER					
Event	9	Pre-Rig Down Safety Meeting	5/25/2017	16:50:34	USER	8.35	0.00	18.8	-14.00	PRE-JOB MEETING WITH EVERYONE ON LOCATION.
Event	10	Start Job	5/25/2017	17:07:40	COM5	8.31	0.00	0.0	-4.00	TD: 3040 TP: 3048 SJ: 26.24' MW: 9.4 9 5/8" 40#/FT CSG IN 13 3/4" OH - MUD REPORT PV: 11 YP: 11 VIS-39 FLUID LOSS - 11.2 SGS - 4/14/19. WATER TEST: PH- 6.5 SULFATES <200 POTASSIUM- 450 TEMP- 65 DEG
Event	11	Prime Pumps	5/25/2017	17:08:56	COM5	8.32	1.90	0.9	25.00	FILL LINES WITH FRESH H2O

Event	12	Test Lines	5/25/2017	17:09:55	COM5	8.36	0.00	2.0	13.00	3000 PSI TEST, HELD GOOD
Event	13	PUMP H2O SPACER 1	5/25/2017	17:13:45	COM5	8.37	0.00	2.1	6.00	FRESH H2O SPACER
Event	14	PUMP SUPERFLUSH SPACER 1	5/25/2017	17:15:16	COM5	8.30	4.00	0.0	70.00	SUPERFLUSH 1
Event	15	PUMP H2O SPACER 2	5/25/2017	17:17:57	COM5	10.37	4.00	10.7	291.00	H2O SPACER 2
Event	16	PUMP CACL SPACER1	5/25/2017	17:19:17	COM5	8.20	4.00	0.0	76.00	CACL SPACER 1
Event	17	PUMP H2O SPACER 3	5/25/2017	17:22:09	COM5	8.70	4.00	0.0	84.00	H2O SPACER 3
Event	18	PUMP SUPERFLUSH SPACER 2	5/25/2017	17:23:31	COM5	9.16	4.00	0.0	85.00	SUPERFLUSH 2
Event	19	PUMP H2O SPACER 4	5/25/2017	17:26:13	COM5	8.46	4.00	0.0	181.00	H2O SPACER 4
Event	20	PUMP CACL SPACER 2	5/25/2017	17:27:32	COM5	8.42	4.00	0.0	69.00	CACL SPACER 2
Event	21	PUMP H2O SPACER 5	5/25/2017	17:30:17	COM5	9.76	4.00	0.0	73.00	H2O SPACER 5
Event	22	Pump Lead Cement	5/25/2017	17:35:36	COM5	8.20	4.00	0.0	73.00	1175 SKS @ 12.3 PPG 2.38 YLD 13.76 GAL/SK H2O
Event	23	Pump Tail Cement	5/25/2017	18:43:40	COM5					345 SKS @ 12.8 PPG 2.11 YLD 11.76GAL/SK H2O
Event	24	Drop Top Plug	5/25/2017	18:43:41	USER	12.93	8.00	523.5	486.00	SHUTDOWN DROP TOP PLUG
Event	25	Pump Displacement	5/25/2017	19:05:34	COM5	9.11	2.90	1.7	65.00	FRESH H2O DISPLACEMENT
Event	26	Slow Rate	5/25/2017	19:31:14	USER	8.44	2.00	232.9	637.00	PRESSURE PRIOR TO SLOWING DOWN WAS 1100 PSI, LEVELED OUT @ 650 PSI @ 2 BPM
Event	27	Bump Plug	5/25/2017	19:33:42	COM5	8.45	0.00	237.1	1038.00	FINAL CIRCULATING PRESSURE WAS 650, BUMPED TO 1050. UPON SHUTTING DOWN PRESSURE SLOWLY BLED OFF, PRESSURED BACK UP TO 1100 WITH SAME RESULT
Event	28	CHECK FLOATS	5/25/2017	19:36:04	COM5					FLOATS HELD,
Event	29	Circulate Well	5/25/2017	19:44:03	COM5	8.44	2.90	1.1	22.00	PUMP DOWN PARASITE WITH 8 BBL SUGAR WATER
Event	30	End Job	5/25/2017	19:49:00	USER	8.44	0.00	0.0	2.00	

RIG HAD GOOD CIRCULATION PRIOR TO
JOB,GAINED FULL CIRCULATION @ 300BBL AWAY
ON LEAD AND MAINTAINED FULL CIRCULATION
FOR REMAINDER OF JOB. CIRCULATED 350 BBLS
CEMENT TO SURFACE. 50 # SUGAR USED, NO ADD
HOURS CHARGED.

Event	31	Pre-Rig Down Safety Meeting	5/25/2017	20:24:57	USER
-------	----	-----------------------------	-----------	----------	------

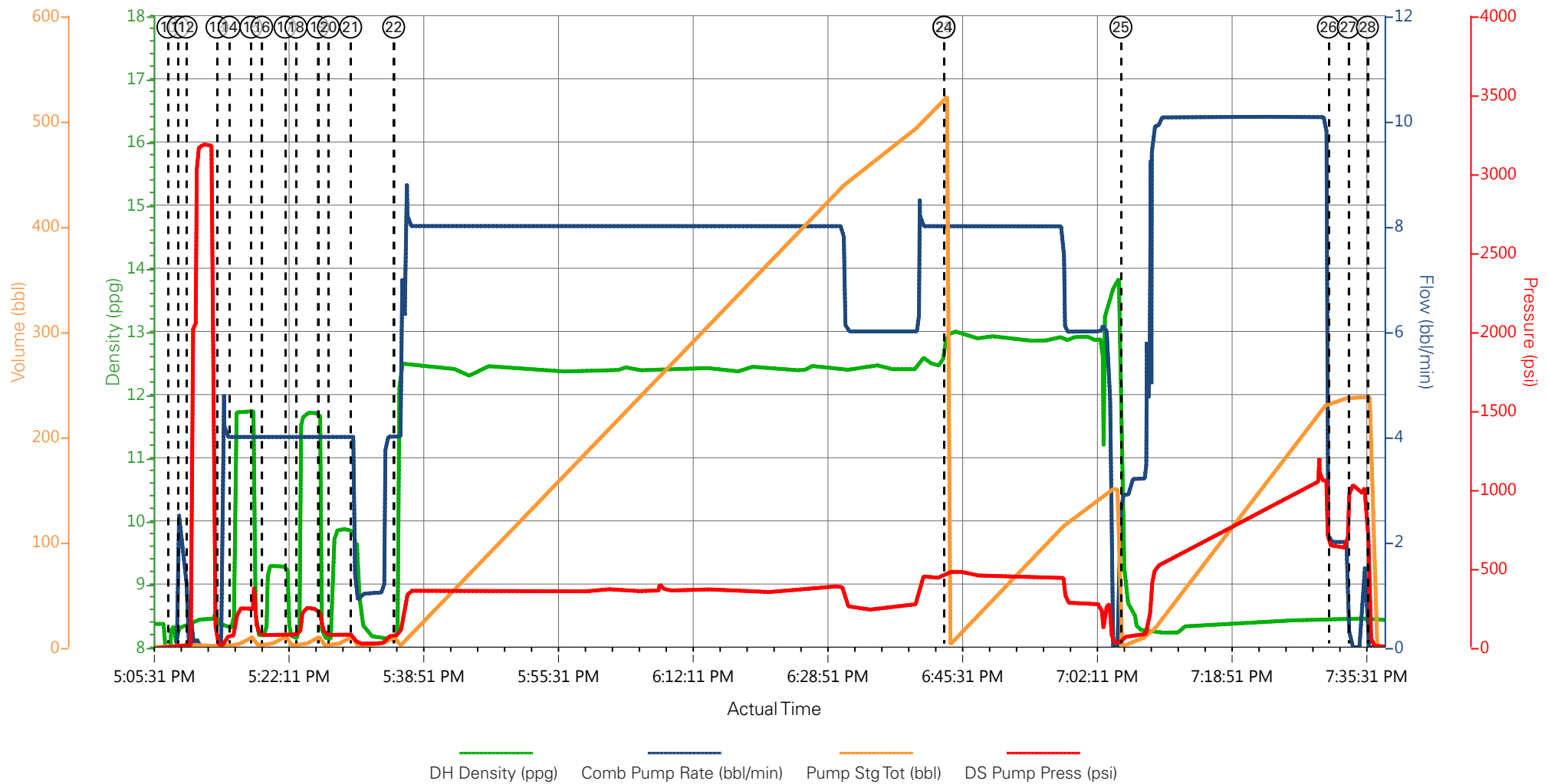
Event	32	Rig-Down Equipment	5/25/2017	20:25:21	USER
-------	----	--------------------	-----------	----------	------

Event	33	Pre-Convoy Safety Meeting	5/25/2017	20:25:32	USER
-------	----	---------------------------	-----------	----------	------

Event	34	Crew Leave Location	5/25/2017	20:25:50	USER
-------	----	---------------------	-----------	----------	------

THANK YOU FOR CHOOSING HALLIBURTON
CEMENTING OF GRAND JUNCTION, COLORADO
ANTHONY ANDREWS AND CREW

TERRA ENERGY PARTNERS - CHEVRON TR 321-23-597 - 9 5/8" SURFACE



① Call Out n/a;n/a;n/a;n/a	⑩ Start Job 8.31;0;0;-4	⑲ PUMP H2O SPACER 4 8.46;4;0;181	28 CHECK FLOATS 8.42;0;237.7;50.73
② Pre-Convoy Safety Meeting n/a;n/a;n/a;n/a	⑪ Prime Pumps 8.32;1.9;0.9;25	20 PUMP CACL SPACER 2 8.42;4;0;69	29 Circulate Well 8.44;2.9;1.1;22
③ Depart from Service Center or Other Site n/a;n/a;n/a;n/a	⑫ Test Lines 8.36;0;2;13	21 PUMP H2O SPACER 5 9.76;4;0;73	30 End Job 8.44;0;0;2
④ Arrive At Loc n/a;n/a;n/a;n/a	⑬ PUMP H2O SPACER 1 8.37;0;2.1;6	22 Pump Lead Cement 8.2;4;0;73	31 Pre-Rig Down Safety Meeting n/a;n/a;n/a;n/a
⑤ Assessment Of Location Safety Meeting n/a;n/a;n/a;n/a	⑭ PUMP SUPERFLUSH SPACER 1 8.3;4;0;70	23 Pump Tail Cement 12.93;8;523.37;475.53	32 Rig-Down Equipment n/a;n/a;n/a;n/a
⑥ Spot Equipment n/a;n/a;n/a;n/a	⑮ PUMP H2O SPACER 2 10.37;4;10.7;291	24 Drop Top Plug 12.93;8;523.5;486	33 Pre-Convoy Safety Meeting n/a;n/a;n/a;n/a
⑦ Pre-Rig Up Safety Meeting n/a;n/a;n/a;n/a	⑯ PUMP CACL SPACER1 8.2;4;0;76	25 Pump Displacement 9.11;2.9;1.7;65	34 Crew Leave Location n/a;n/a;n/a;n/a
⑧ Rig-Up Equipment n/a;n/a;n/a;n/a	⑰ PUMP H2O SPACER 3 8.7;4;0;84	26 Slow Rate 8.44;2;232.9;637	
⑨ Pre-Rig Down Safety Meeting 8.35;0;18.8;-14	⑱ PUMP SUPERFLUSH SPACER 2 9.16;4;0;85	27 Bump Plug 8.45;0;237.1;1038	

TERRA ENERGY PARTNERS - CHEVRON TR 321-23-597 - 9 5/8" SURFACE

