

HALLIBURTON

iCem[®] Service

TEP ROCKY MOUNTAIN LLC

For: Terra

Date: Wednesday, August 09, 2017

CHEVRON TR 423-23-597 Production

API# 05-045-23462-00

Sincerely,

Grand Junction Cement Engineering

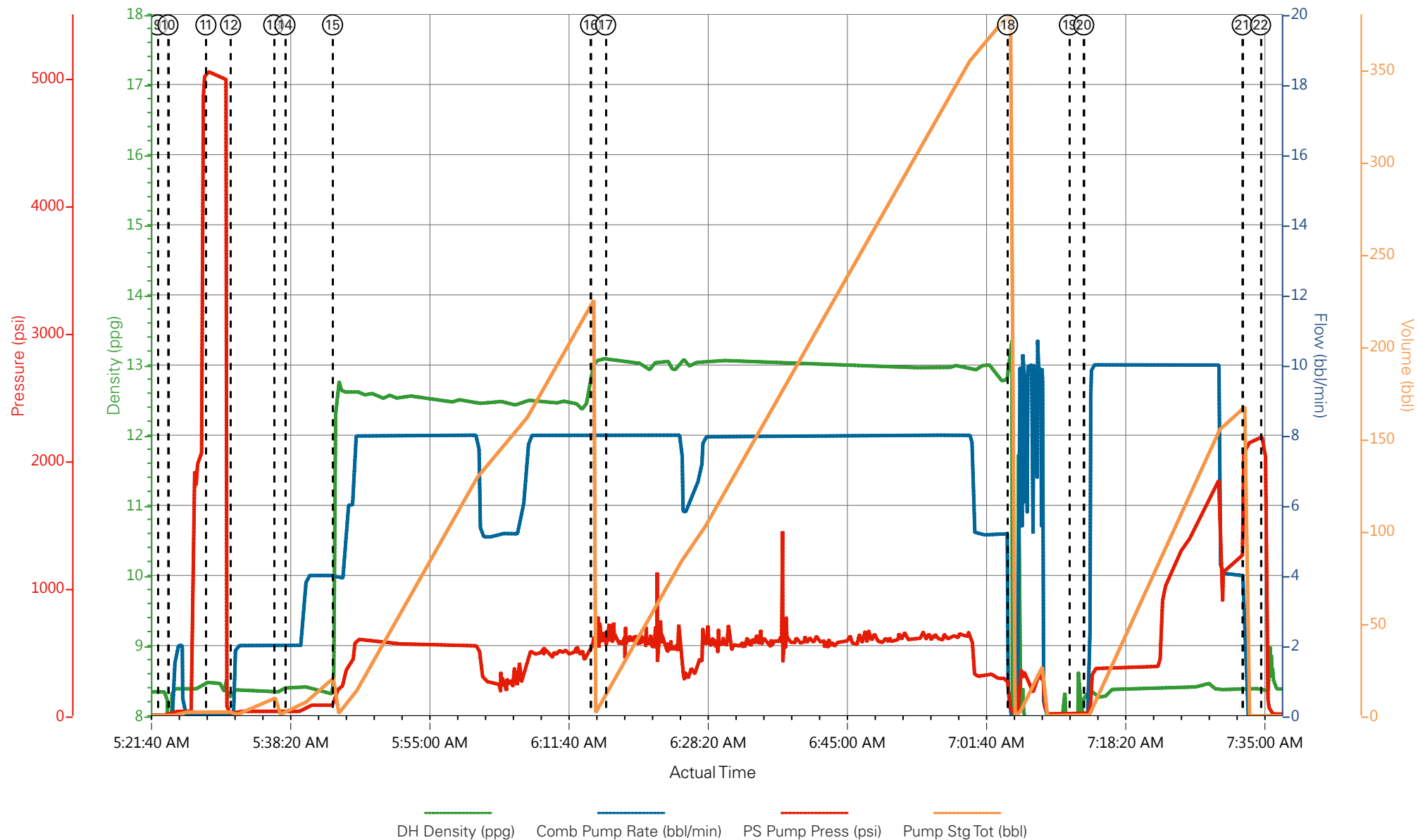
1.0 Real-Time Job Summary

1.1 Job Event Log

Type	Seq. No.	Graph Label	Date	Time	Source	DH Density (ppg)	Comb Pump Rate (bbl/min)	PS Pump Press (psi)	Pump Stg Tot (bbl)	Comments
Event	1	Call Out	8/8/2017	15:00:00	USER					REQUESTED ON LOCATION @ 0:00
Event	2	Pre-Convoy Safety Meeting	8/8/2017	17:45:00	USER					ALL HES EMPLOYEES PRESENT
Event	3	Crew Leave Yard	8/8/2017	18:00:00	USER					1 HT 400 PUMP TRUCK E4, 1 660 BULK TRUCK, 1 550 SERVICE PICKUP
Event	4	Arrive At Loc	8/8/2017	22:00:00	USER					2 HOUR EARLY TO LOCATION. RIG RUNNING CASING UPON HES ARRIVAL
Event	5	Assessment Of Location Safety Meeting	8/8/2017	23:00:00	USER					MET WITH COMP REP, AND WENT OVER NUMBERS AND JOB PROCEDURE. WALKED AROUND LOCATION AND COLLECTED WATER SAMPLE (PH- 7.0, CHLORIDES- 0, TEMP- 60 F). COMP REP WAS OFFERED SDS FOR ALL CHEMICLES USED BY HES.
Event	6	Spot Equipment	8/9/2017	02:00:00	USER					1 HT 400 PUMP TRUCK E4, 1 660 BULK TRUCK, 1 550 SERVICE PICKUP
										ALL HES EMPLOYEES PRESENT
Event	7	Pre-Rig Up Safety Meeting	8/9/2017	03:00:00	USER					
Event	8	Pre-Job Safety Meeting	8/9/2017	05:00:00	USER					ALL HES EMPLOYEES AND RIG CREW PRESENT, RIG CIRCULATED @ 14 BPM PRIOR TO JOB PRESSURE @ 1000 PSI, WILL HAVE 1000 CFM DOWN THE PARASITE.
Event	9	Start Job	8/9/2017	05:22:50	USER					TP 10,370', SJ 30.46', SURFACE CSG 9 5/8" 36# J-55 SET @ 2978' PRODUCTION CSG 4 1/2" 11.6# P-110, OH 8 3/4", MUD 8.9 VIS 45 PPG

Event	10	Prime Lines	8/9/2017	05:24:04	USER					FRESH WATER
Event	11	Test Lines	8/9/2017	05:28:36	COM5			5055		PRESSURE HELD
Event	12	Pump H2O Spacer	8/9/2017	05:31:33	COM5	8.33	2.0	30	10	FRESH WATER
Event	13	Pump Mud Flush III	8/9/2017	05:36:43	COM5	8.35	4.0	85	20	80 LBS MUD FLUSH III USED FOR 20 BBLS
Event	14	Check weight	8/9/2017	05:38:04	COM5					WEIGHT VERIFIED VIA PRESSUREIZED MUD SCALES
Event	15	Pump Lead Cement	8/9/2017	05:43:46	COM5	12.5	8.0	567	195.2	565 SKS (195.2 BBLS) OF NEOCEM CMT 12.5 PPG, 1.94 FT3/SK, 9.58 GAL/SK. WITH 5 BOXES 75 LBS OF TUF-FIBER THROUGHOUT LEAD CEMENT
Event	16	Pump Tail Cement	8/9/2017	06:14:40	COM5	13.0	8.0	600	328.1	890 SKS (328.1 BBLS) OF NEOCEM CMT 13.0 PPG, 2.07 FT3/SK, 9.43 GAL/SK.
Event	17	Check weight	8/9/2017	06:16:28	COM5					WEIGHT VERIFIED VIA PRESSUREIZED MUD SCALES
Event	18	Shutdown	8/9/2017	07:04:36	COM5					END FO CEMENT WASHED UP INTO PIT
Event	19	Drop Top Plug	8/9/2017	07:12:01	COM5					VERIFIED BY FLAG INDICATOR
Event	20	Pump Displacement	8/9/2017	07:13:43	COM5	8.4 8.4	10.0 4.0	1860 1130	150.8 10	1 GAL MMCR IN FIRST 10 BBLS, 3 LBS BE-6 IN FIRST 30 BBLS, 1 50 LB. BAG KCL THROUGHOUT DISPLACEMENT
Event	21	Bump Plug	8/9/2017	07:32:43	COM5	8.4	4.0	1200	160.8	PLUG BUMPED
Event	22	Check Floats	8/9/2017	07:34:54	USER			2180		FLOATS HELD 1.25 BBL FLOWBACK TO TRUCK
Event	23	Post-Job Safety Meeting (Pre Rig-Down)	8/9/2017	07:50:00	USER					ALL HES EMPLOYEES PRESENT
Event	24	Pre-Convoy Safety Meeting	8/9/2017	08:45:00	USER					ALL HES EMPLOYEES PRESENT
Event	25	Crew Leave Location	8/9/2017	09:00:00	USER					THANK YOU FOR CHOOSING HALLIBURTON CEMENT, DUSTIN HYDE AND CREW

TERRA - CHEVRON TR 423-23-597 - 4 1/2" PRODUCTION



- | | | | | |
|---|-----------------------------|----------------------|----------------------|---|
| ① Call Out | ⑥ Spot Equipment | ⑪ Test Lines | ⑯ Pump Tail Cement | 21 Bump Plug |
| ② Pre-Convoy Safety Meeting | ⑦ Pre-Rig Up Safety Meeting | ⑫ Pump H2O Spacer | ⑰ Check weight | 22 Check Floats |
| ③ Crew Leave Yard | ⑧ Pre-Job Safety Meeting | ⑬ Pump Mud Flush III | ⑱ Shutdown | 23 Post-Job Safety Meeting (Pre Rig-Down) |
| ④ Arrive At Loc | ⑨ Start Job | ⑭ Check weight | ⑲ Drop Top Plug | 24 Pre-Convoy Safety Meeting |
| ⑤ Assessment Of Location Safety Meeting | ⑩ Prime Lines | ⑮ Pump Lead Cement | 20 Pump Displacement | 25 Crew Leave Location |

▼ **HALLIBURTON** | iCem® Service

Created: 2017-08-08 23:51:52, Version: 4.2.393

Edit

Customer : TEP ROCKY MOUNTAIN LLC

Job Date : 8/9/2017

Well : CHEVRON TR 423-23-597

Representative : GARRETT WADE

Sales Order # : 904219053

ELITE 4 : HYDE / ANGELO

TERRA - CHEVRON TR 423-23-597 - 4 1/2" PRODUCTION

