

HALLIBURTON

iCem[®] Service

Terra Energy Partners

For: H&P 271

Date: Wednesday, May 31, 2017

TR 322-23-597 Surface PJR

API #05-045-23470-00

Sincerely,

Grand Junction Cement Engineering

1.0 Real-Time Job Summary

1.1 Job Event Log

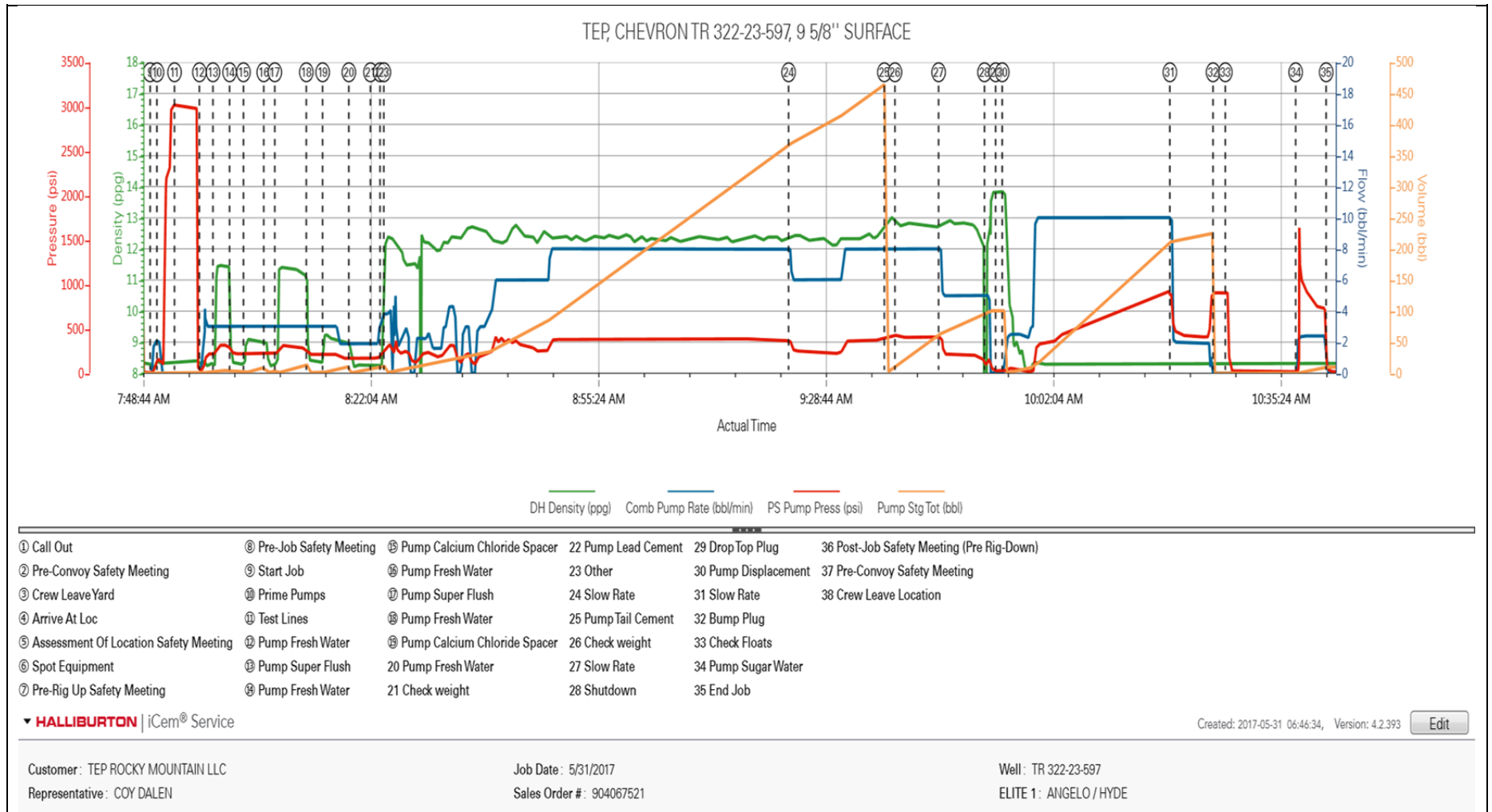
Type	Seq. No.	Graph Label	Date	Time	Source	DH Density (ppg)	Comb Pump Rate (bbl/min)	PS Pump Press (psi)	Pump Stg Tot (bbl)	Comments
Event	1	Call Out	5/30/2017	23:30:00	USER					REQUESTED ON LOCATION @ 05:30
Event	2	Pre-Convoy Safety Meeting	5/31/2017	01:45:00	USER					ALL HES EMPLOYEES PRESENT
Event	3	Crew Leave Yard	5/31/2017	02:00:00	USER					1 HT 400 PUMP TRUCK E1, 1 SUPERFLUSH TRANSPORT, 1 660 BULK TRUCK, 1 FRUEHAUGH WITH TOPOUT, 1 450 SERVICE PICKUP
Event	4	Arrive At Loc	5/31/2017	05:30:00	USER					RIG DONE WITH CASING UPON HES ARRIVAL
Event	5	Assessment Of Location Safety Meeting	5/31/2017	05:35:00	USER					MET WITH COMP REP, AND WENT OVER NUMBERS AND JOB PROCEDURE. WALKED AROUND LOCATION AND COLLECTED WATER SAMPLE (PH- 7, CHLORIDES- 0, TEMP- 55F). COMP REP WAS OFFERED SDS FOR ALL CHEMICLES USED BY HES.
Event	6	Spot Equipment	5/31/2017	05:40:00	USER					1 HT 400 PUMP TRUCK E1, 1 SUPERFLUSH TRANSPORT, 1 660 BULK TRUCK, 1 450 SERVICE PICKUP
Event	7	Pre-Rig Up Safety Meeting	5/31/2017	06:15:00	USER					ALL HES EMPLOYEES PRESENT
Event	8	Pre-Job Safety Meeting	5/31/2017	07:15:00	USER					ALL HES EMPLOYEES AND RIG CREW PRESENT, RIG CIRCULATED @ 6.5 BPM WITH 360 PSI
Event	9	Start Job	5/31/2017	07:50:01	USER					TD 3013', TP 3018.88' OF 9 5/8" J-55 40#, SJ 29.49", OH 14 3/4", MUD 8.6 PPG

Event	10	Prime Pumps	5/31/2017	07:51:00	COM5	8.33	2.0	180	2	FRESH WATER
Event	11	Test Lines	5/31/2017	07:53:35	COM5			3025		ALL LINES HELD PRESSURE AT 3025 PSI
Event	12	Pump Fresh Water	5/31/2017	07:57:14	COM5	8.33	3.0	200	5	FRESH WATER
Event	13	Pump Super Flush	5/31/2017	07:59:13	COM5	11.5	3.0	280	10	SUPER FLUSH
Event	14	Pump Fresh Water	5/31/2017	08:01:39	COM5	8.33	3.0	220	5	FRESH WATER
Event	15	Pump Calcium Chloride Spacer	5/31/2017	08:03:41	COM5	9.05	3.0	217	10	10 SKS CALCIUM CHLORIDE IN 10 BBL H2O
Event	16	Pump Fresh Water	5/31/2017	08:06:40	COM5	8.33	3.0	230	5	FRESH WATER
Event	17	Pump Super Flush	5/31/2017	08:08:17	COM5	11.5	3.0	305	10	SUPER FLUSH
Event	18	Pump Fresh Water	5/31/2017	08:12:54	COM5	8.33	3.0	210	5	FRESH WATER
Event	19	Pump Calcium Chloride Spacer	5/31/2017	08:15:17	COM5	9.0	3.0	200	10	10 SKS CALCIUM CHLORIDE IN 10 BBL H2O
Event	20	Pump Fresh Water	5/31/2017	08:19:07	COM5	8.33	2.0	167	10	FRESH WATER
Event	21	Check weight	5/31/2017	08:22:18	COM5					WEIGHT VERIFIED VIA PRISSEIREIZED MUD SCALES
Event	22	Pump Lead Cement	5/31/2017	08:23:42	COM5	12.3	8.0	380	441	1040 SKS VARICEM CMT 12.3 PPG, 2.38 FT3/SK, 13.76 GAL/SK WITH 3 BOXES TUF FIBER THROUGHOUT LEAD
Event	23	Other	5/31/2017	08:24:15	USER					HAD ISSUES WITH STARTING CMT
Event	24	Slow Rate	5/31/2017	09:23:33	USER					SLOWED RATE TO END SIO
Event	25	Pump Tail Cement	5/31/2017	09:37:35	COM5	12.8	8.0	400	130	345 SKS VARICEM CMT 12.8 PPG, 2.11 FT3/SK, 11.78 GAL/SK
Event	26	Check weight	5/31/2017	09:39:08	COM5					WEIGHT VERIFIED VIA PRISSEIREIZED MUD SCALES
Event	27	Slow Rate	5/31/2017	09:45:32	USER					SLOW RATE TO END SILO
Event	28	Shutdown	5/31/2017	09:52:15	USER					END OF CMT
Event	29	Drop Top Plug	5/31/2017	09:53:53	USER					VERIFIED BY FLAG INDICATOR

Event	30	Pump Displacement	5/31/2017	09:54:51	COM5	8.33	10.0	920	216	FRESH WATER
Event	31	Slow Rate	5/31/2017	10:19:25	USER	8.33	2.0	480	10	SLOWED TO BUMP PLUG
Event	32	Bump Plug	5/31/2017	10:25:44	COM5	8.33	2.0	420	226	PLUG BUMPED
Event	33	Check Floats	5/31/2017	10:27:33	USER			910		FLOATS HELD. 3/4 OF BBL FLOW BACK
Event	34	Pump Sugar Water	5/31/2017	10:37:51	USER	8.34	1.5	1200	10	PUMPED 10 BBL SUGAR WATER TO CLEAR PARASITE USED 20 LBS SUGAR
Event	35	End Job	5/31/2017	10:42:19	USER					HAD RETURNS 80 BBLS INTO CMT LOST WHEN WE SHUT DOWN TO DISPLACE. CEMENT JUST BELOW SURFACE, HAD SPACER BACK TO SURFACE
Event	36	Post-Job Safety Meeting (Pre Rig- Down)	5/31/2017	11:00:00	USER					ALL HES EMPLOYEES PRESENT
Event	37	Pre-Convoy Safety Meeting	5/31/2017	12:45:00	USER					ALL HES EMPLOYEES PRESENT
Event	38	Crew Leave Location	5/31/2017	14:00:00	USER					THANK YOU FOR CHOOSING HALLIBURTON CEMENT, DUSTIN HYDE AND CREW

2.0 Attachments

2.1 CHART WITH EVENTS.png



2.2 CHART WITHOUT EVENTS.png

