

HALLIBURTON

iCem[®] Service

Terra Energy Partners

For: H&P 271

Date: Wednesday, May 03, 2017

TR 24-23-597 Surface PJR

API# 05-045-23476-00

Sincerely,

Grand Junction Cement Engineering

2.0 Real-Time Job Summary

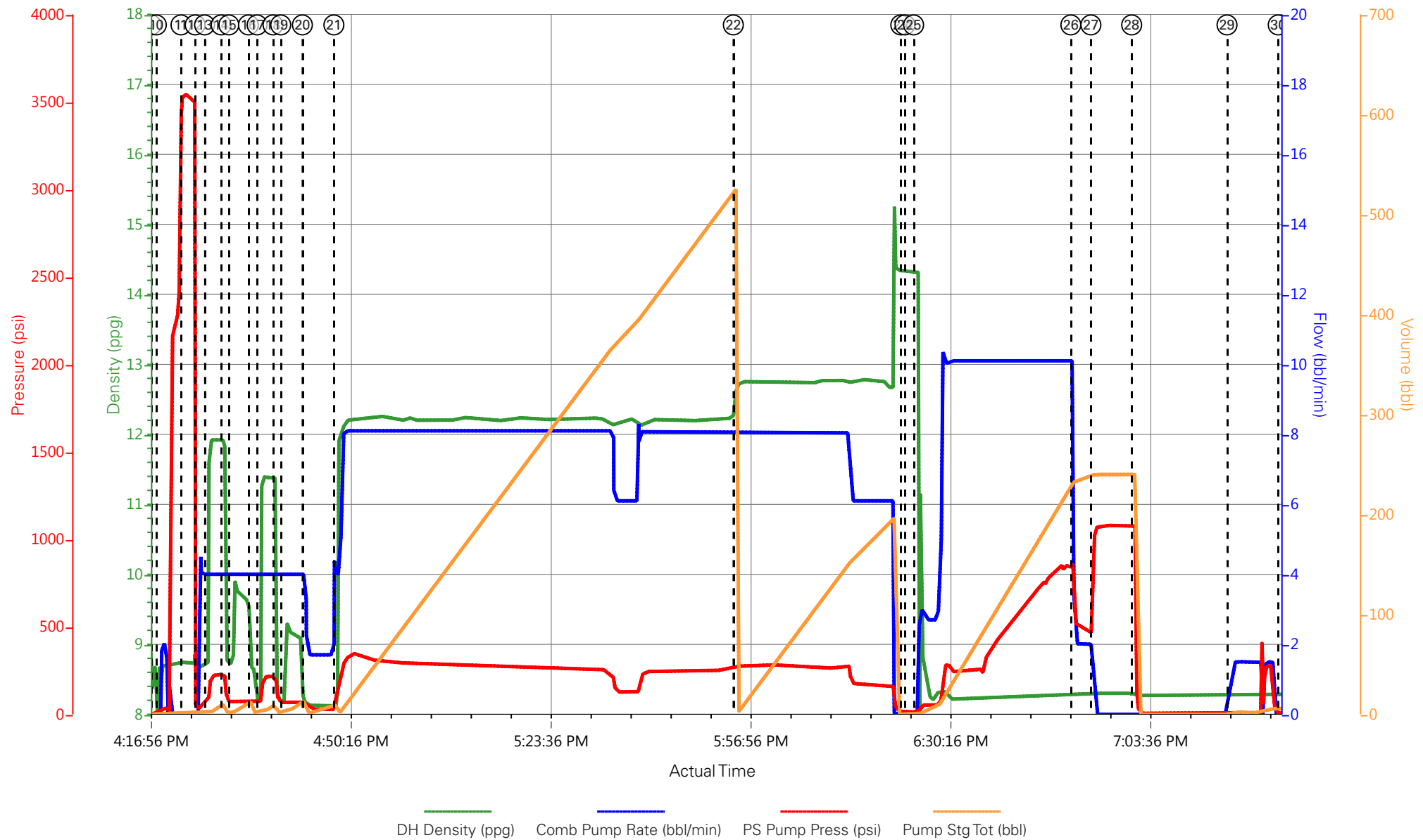
2.1 Job Event Log

Type	Seq. No.	Graph Label	Date	Time	Source	DH Density (ppg)	Comb Pump Rate (bbl/min)	PS Pump Press (psi)	Pump Stg Tot (bbl)	Comments
Event	1	Call Out	5/2/2017	02:00:00	USER					ELITE #8
Event	2	Pre-Convoy Safety Meeting	5/2/2017	04:00:00	USER					ALL HES EMPLOYEES
Event	3	Arrive At Loc	5/2/2017	07:00:00	USER					
Event	4	Assessment Of Location Safety Meeting	5/2/2017	07:15:00	USER					ALL HES EMPLOYEES
Event	5	Pre-Rig Up Safety Meeting	5/2/2017	07:30:00	USER					ALL HES EMPLOYEES
Event	6	Rig-Up Equipment	5/2/2017	07:45:00	USER					1 HT-400 PUMP TRUCK (ELITE #8) 1 660 BULK TRUCK 1 SUPERFLUSH TRANSPORT 1 F-550 PICKUP 3 SILO'S
Event	7	Comment	5/2/2017	07:55:00	USER					CUSTOMER WAS OFFERED SDS
Event	8	Pre-Job Safety Meeting	5/2/2017	10:00:00	USER					ALL HES EMPLOYEES AND RIG CREW
Event	9	Start Job	5/2/2017	16:17:30	COM5					TD: 3017 TP: 3021.47 CSG: 9 5/8 36# J-55 SJ: 27.90 OH: 14 3/4 MW: 8.8 PPG
Event	10	Prime Lines	5/2/2017	16:18:21	COM5	8.33	2.0	38	2.0	PRIME LINES FRESH WATER
Event	11	Test Lines	5/2/2017	16:22:27	COM5			3553		PRESSURE TEST OK
Event	12	Fresh Water Spacer	5/2/2017	16:24:49	COM5	8.33	4.0	70	5.0	5 BBL FRESH WATER SPACER
Event	13	Super Flush 100	5/2/2017	16:26:23	COM5	11.5	4.0	200	10.0	10 BBL SUPER FLUSH 100
Event	14	Fresh Water Spacer	5/2/2017	16:29:09	COM5	8.33	4.0	70	5.0	5 BBL FRESH WATER SPACER

Event	15	CaCl Spacer	5/2/2017	16:30:26	COM5	8.4	4.0	74	10.0	10 BBL CACL SPACER
Event	16	Fresh Water Spacer	5/2/2017	16:33:42	COM5	8.33	4.0	70	5.0	5 BBL FRESH WATER SPACER
Event	17	Super Flush 100	5/2/2017	16:35:09	COM5	11.5	4.0	200	10.0	10 BBL SUPERFLUSH 100
Event	18	Fresh Water Spacer	5/2/2017	16:37:48	COM5	8.33	4.0	70	5.0	5 BBL FRESH WATER SPACER
Event	19	CaCl Spacer	5/2/2017	16:39:05	COM5	8.4	4.0	74	10.0	10 BBL CACL SPACER
Event	20	Fresh Water Spacer	5/2/2017	16:42:42	COM5	8.33	4.0	70	10.0	10 BBL FRESH WATER SPACER
Event	21	Pump Lead Cement	5/2/2017	16:47:57	COM5	12.3	8.0	320	498.0	1175 SKS (498 BBLS) 12.3 PPG 2.38 YIELD 13.76 GAL/SK LEAD CEMENT WEIGHT VERIFIED VIA PRESSURIZED MUD SCALES 60 LBS TUFF FIBER ADDED THROUGHOUT LEAD CEMENT
Event	22	Pump Tail Cement	5/2/2017	17:54:34	COM5	12.8	8.0	280	129.6	345 SKS (129.6 BBLS) 12.8 PPG 2.11 YIELD 11.78 GAL/SK TAIL CEMENT WEIGHT VERIFIED VIA PRESSURIZED MUD SCALES
Event	23	Shutdown	5/2/2017	18:22:30	USER					
Event	24	Drop Top Plug	5/2/2017	18:23:11	COM5					PLUG AWAY NO ISSUES
Event	25	Pump Displacement	5/2/2017	18:24:38	COM5	8.4	10.0	860	231.4	231.4 BBL FRESH WATER DISPLACEMENT WASH UP ON TOP OF PLUG AS PER COMPANY REP REQUEST
Event	26	Slow Rate	5/2/2017	18:50:51	USER	8.4	2.0	470	221.4	SLOW RATE PRIOR TO BUMPING PLUG
Event	27	Bump Plug	5/2/2017	18:54:12	COM5	8.4	2.0	470	231.4	PRESSURE PRIOR TO BUMPING PLUG @ 470 PSI BUMPED PLUG UP TO 1076 PSI
Event	28	Check Floats	5/2/2017	19:01:00	COM5			1076		FLOATS HOLDING 1 BBL BACK TO TRUCKS TANK
Event	29	Clear Parasite	5/2/2017	19:16:54	COM5	8.33	1.5	780	10.0	CLEAR PARASITE 10 BBL SUGAR WATER SPACER
Event	30	End Job	5/2/2017	19:25:26	COM5					ESTABLISHED RETURNS 180 BBLS INTO DISPLACEMENT PIPE WAS STATIC THROUGHTOUT JOB
Event	31	Start Job	5/2/2017	21:44:06	COM5					START TOPOUT #1

Event	32	Pump Cement	5/2/2017	21:46:24	COM5	15.6	3.0	90	67.8	320 SKS (67.8 BBLS) 15.6 PPG 1.19 YIELD 5.24 GAL/SK TOPOUT CEMENT WEIGHT VERIFIED VIA PRESSURIZED MUD SCALES
Event	33	Clean Lines	5/2/2017	22:10:26	COM5					CLEAN LINES FRESH WATER
Event	34	End Job	5/2/2017	22:18:32	COM5					END TOPOUT #1
Event	35	Start Job	5/3/2017	00:18:06	COM5					START TOPOUT #2
Event	36	Pump Cement	5/3/2017	00:24:49	COM5	15.6	3.0	85	30.7	145 SKS (30.7 BBLS) 15.6 PPG 1.19 YIELD 5.24 GAL/SK TOPOUT CEMENT WEIGHT VERIFIED VIA PRESSURIZED MUD SCALES
Event	37	Clean Lines	5/3/2017	00:46:10	USER					CLEAN LINES FRESH WATER
Event	38	End Job	5/3/2017	00:47:15	USER					END TOPOUT #2 CEMENT TO SURFACE
Event	39	Pre-Rig Down Safety Meeting	5/3/2017	01:15:00	USER					ALL HES EMPLOYEES
Event	40	Rig-Down Equipment	5/3/2017	01:30:00	USER					
Event	41	Pre-Convoy Safety Meeting	5/3/2017	01:45:00	USER					ALL HES EMPLOYEES
Event	42	Crew Leave Location	5/3/2017	02:00:00	USER					THANK YOU FOR USING HALLIBURTON CEMENT DAVID CAMPBELL AND CREW

TERRA - TR 24-23-597 - 9 5/8 SURFACE



- | | | | | | |
|---|--------------------------|----------------------|-----------------------|----------------------|-------------------|
| ① Call Out | ⑥ Rig-Up Equipment | ⑪ Test Lines | ⑯ Fresh Water Spacer | 21 Pump Lead Cement | 26 Slow Rate |
| ② Pre-Convoy Safety Meeting | ⑦ Comment | ⑫ Fresh Water Spacer | ⑰ Super Flush 100 | 22 Pump Tail Cement | 27 Bump Plug |
| ③ Arrive At Loc | ⑧ Pre-Job Safety Meeting | ⑬ Super Flush 100 | ⑱ Fresh Water Spacer | 23 Shutdown | 28 Check Floats |
| ④ Assessment Of Location Safety Meeting | ⑨ Start Job | ⑭ Fresh Water Spacer | ⑲ CaCl Spacer | 24 Drop Top Plug | 29 Clear Parasite |
| ⑤ Pre-Rig Up Safety Meeting | ⑩ Prime Lines | ⑮ CaCl Spacer | 20 Fresh Water Spacer | 25 Pump Displacement | 30 End Job |

▼ **HALLIBURTON** | iCem® Service

Created: 2017-05-02 03:11:20, Version: 4.2.393

Edit

Customer : TEP ROCKY MOUNTAIN LLC

Job Date : 5/2/2017

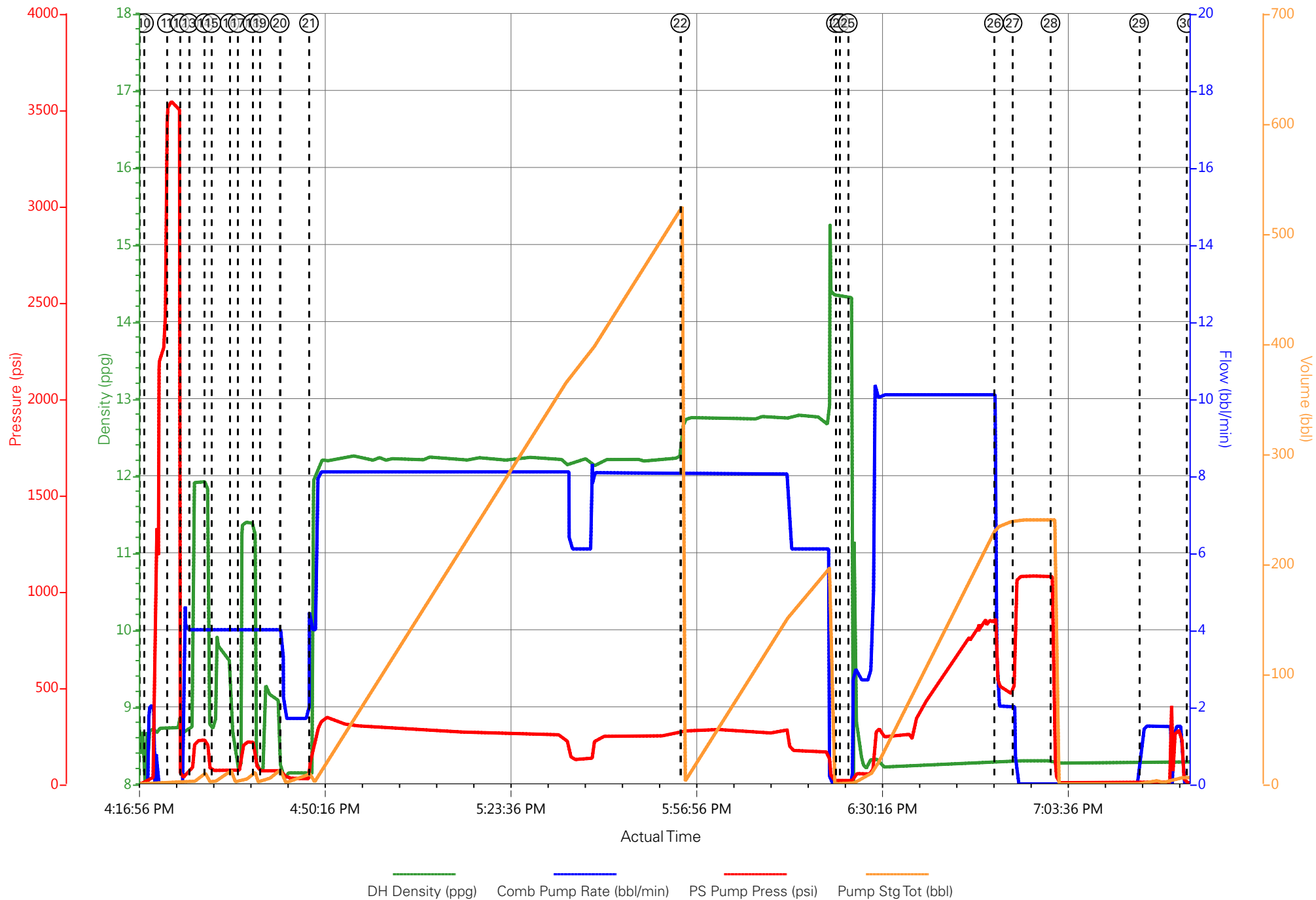
Well : TR 24-23-597

Representative : TED RAGSDALE

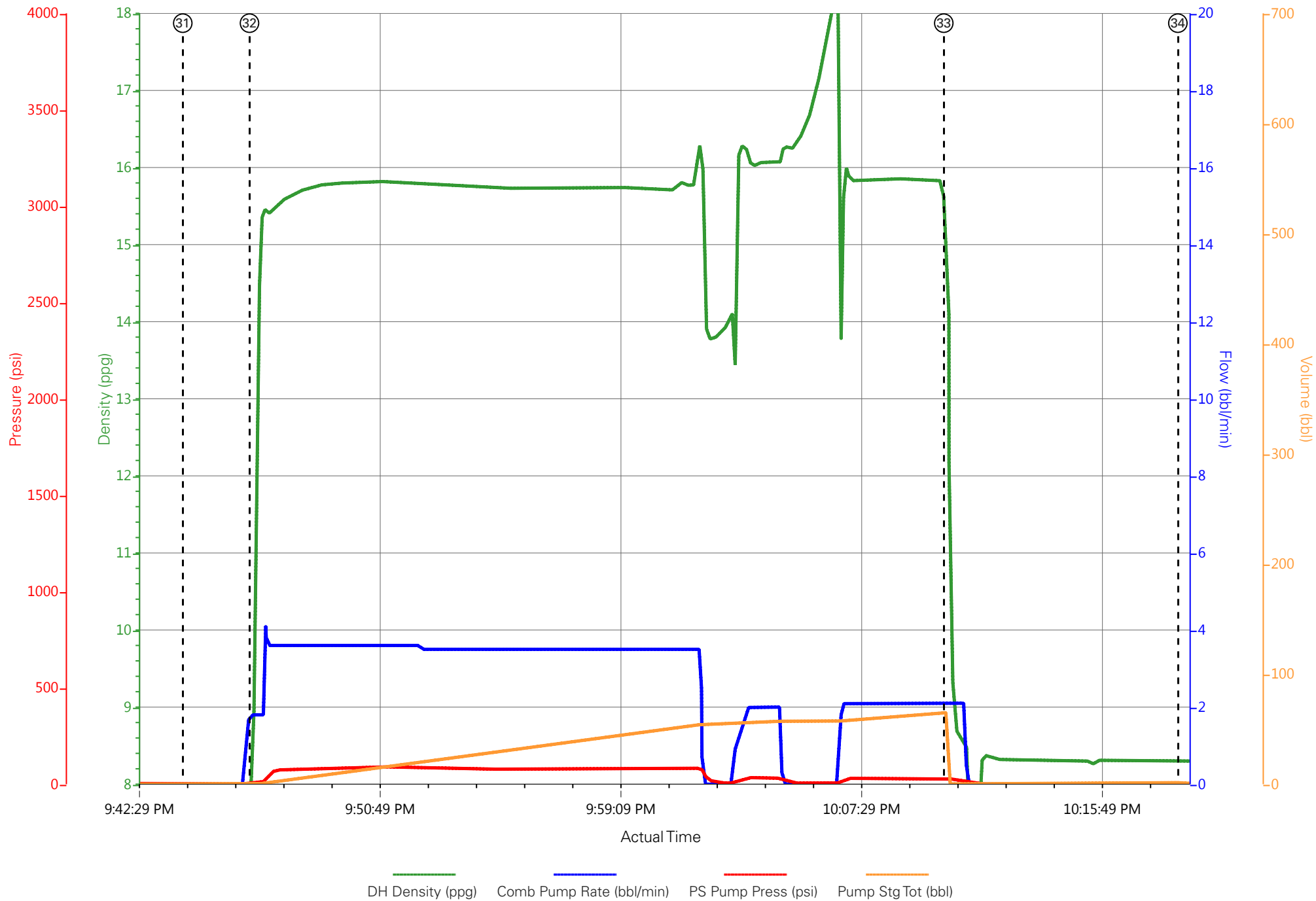
Sales Order # : 0904006538

ELITE # 8 : DAVID CAMPBELL / RYAN MARTIN

TERRA - TR 24-23-597 - 9 5/8 SURFACE



TERRA - TR 24-23-597 - TOPOUT #1



TERRA - TR 24-23-597 - TOPOUT #2

