



Project: Mesa County, CO  
 Site: Gunderson 20-03 Pad  
 Well: Gunderson BCU 20-08E  
 Wellbore: Wellbore #1  
 Design: Design #4  
 Latitude: 39.266836  
 Longitude: -107.795281  
 Ground Level: 7146.0  
 well @ 7176.0usft (H&P #522)



PROJECT DETAILS: Mesa County, CO

Geodetic System: US State Plane 1983  
 Datum: North American Datum 1983  
 Ellipsoid: GRS 1980  
 Zone: Colorado Central Zone  
 System Datum: Mean Sea Level

REFERENCE INFORMATION

Co-ordinate (N/E) Reference: Well Gunderson BCU 20-08E, True North  
 Vertical (TVD) Reference: well @ 7176.0usft (H&P #522)  
 Section (VS) Reference: Slot - (0.0N, 0.0E)  
 Measured Depth Reference: well @ 7176.0usft (H&P #522)  
 Calculation Method: Minimum Curvature

WELL DETAILS: Gunderson BCU 20-08E

+N/-S	+E/-W	Northing	Ground Level: Easting	Latitude	Longitude
0.0	0.0	1530287.61	2350230.89	39.266836	-107.795281

WELLBORE TARGET DETAILS (MAP CO-ORDINATES AND LAT/LONG)

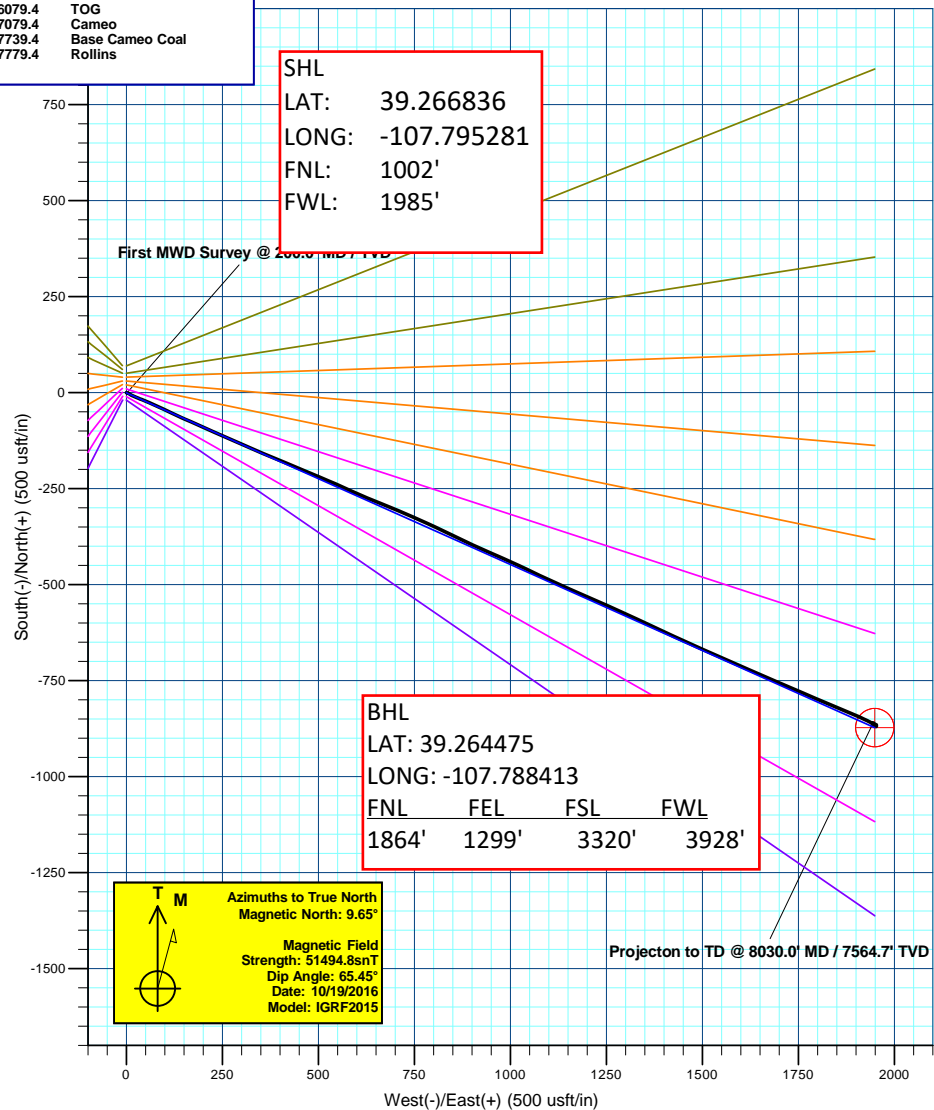
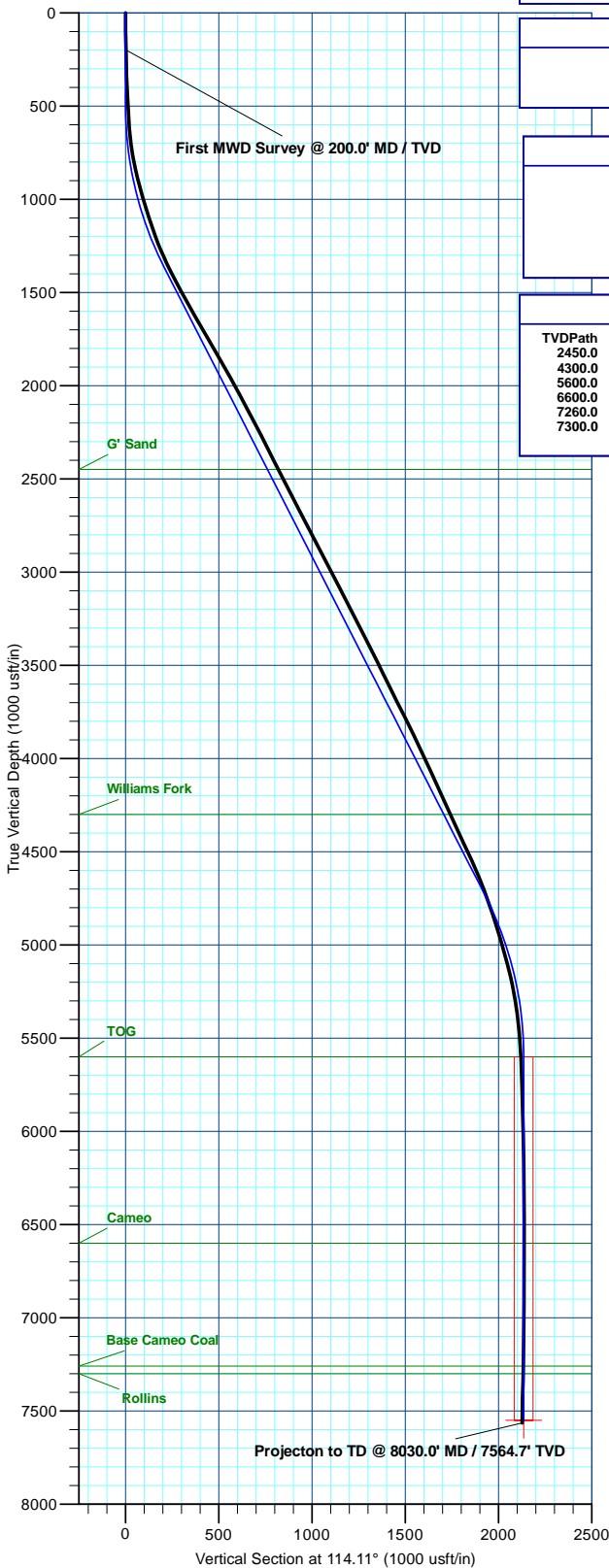
Name	TVD	+N/-S	+E/-W	Northing	Easting	Latitude	Longitude
PBHL - Gunderson BCU 20-08E	7550.0	-872.2	1949.1	1529366.42	2352157.29	39.264441	-107.788397

ANNOTATIONS

MD	Inc	Azi	TVD	+N/-S	+E/-W	Vsect	Departure	Annotation
200.0	1.20	114.30	200.0	-0.9	1.9	2.1	2.1	First MWD Survey @ 200.0' MD / TVD
8030.0	1.10	307.40	7564.7	-859.8	1944.7	2126.3	2154.5	Projection to TD @ 8030.0' MD / 7564.7' TVD

FORMATION TOP DETAILS

TVDPATH	MDPATH	Formation
2450.0	2616.0	G' Sand
4300.0	4693.3	Williams Fork
5600.0	6079.4	TOG
6600.0	7079.4	Cameo
7260.0	7739.4	Base Cameo Coal
7300.0	7779.4	Rollins



Plan: Design #4 (Gunderson BCU 20-08E/Wellbore #1)

Created By: Will Jircik Date: 11:26, July 19 2017