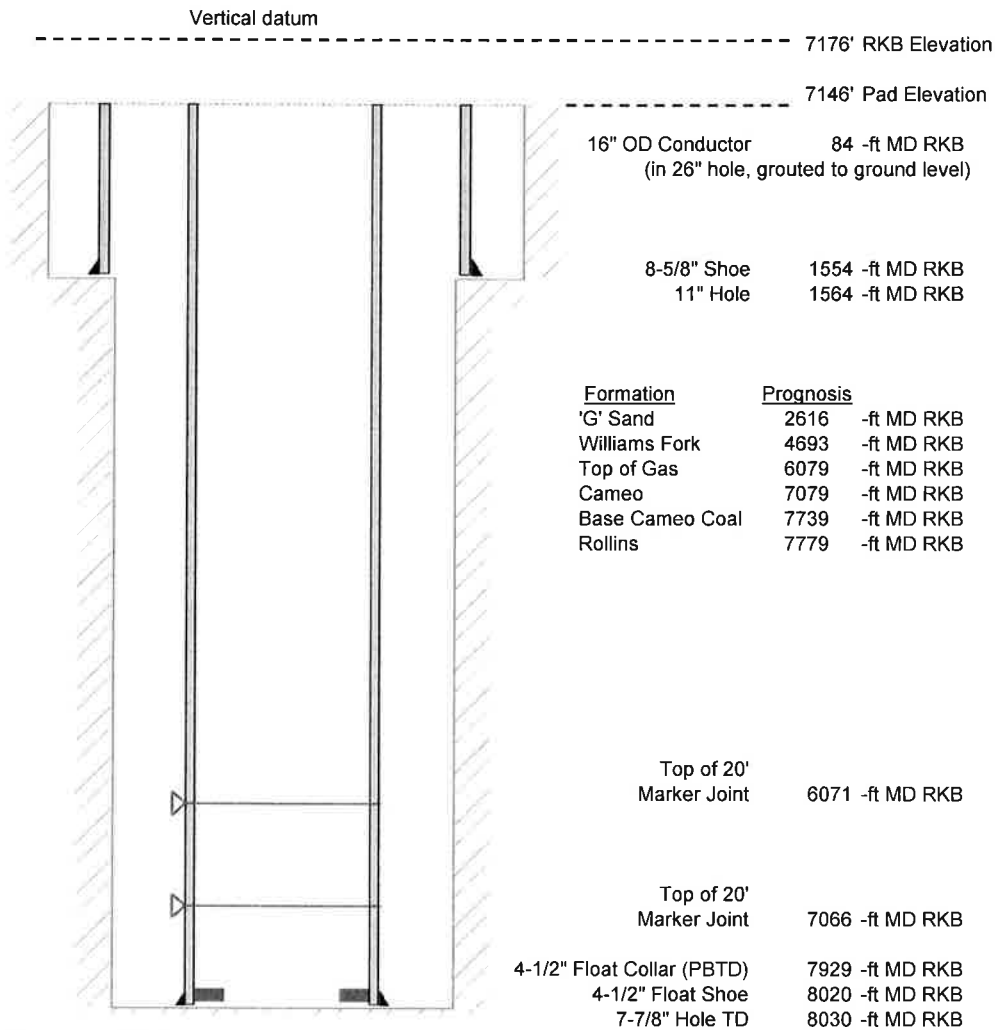


Laramie Energy, LLC
 Gunderson BCU 20-08E
 Slot B-3
 H&P 522 (30-ft KB)

API # : 05-077-10356
 NE/4 NW/4 S20/T9S/R93W/6th PM
 Mesa County, CO
 Date of diagram : 7/20/2017



Cementing details

8-5/8" 24# J55 STC Surface Csg	Lead	Tail
Density (ppg)	12.3	12.8
Volume (sx)	197	109
Yield (cf/sx)	2.45	2.18
Top (ft RKB)	0	650
Bottom (ft RKB)	650	1554
Returns (full or partial)	Full	Full

4-1/2" 11.6# Nexteel-80 LTC Prod Csg	Lead	Tail
Density (ppg)	12.5	13.3
Volume (sx)	851	440
Yield (cf/sx)	1.94	1.73
Est Top (ft RKB)	0	5879
Est Bottom (ft RKB)	5879	8020
Returns (full or partial)	Full	Full

Displacement
8.3 ppg
123 bbls

Other Remarks : 35 bbls of good cement back to surface on surface job. 40 bbls of spacer back to surface on production job.