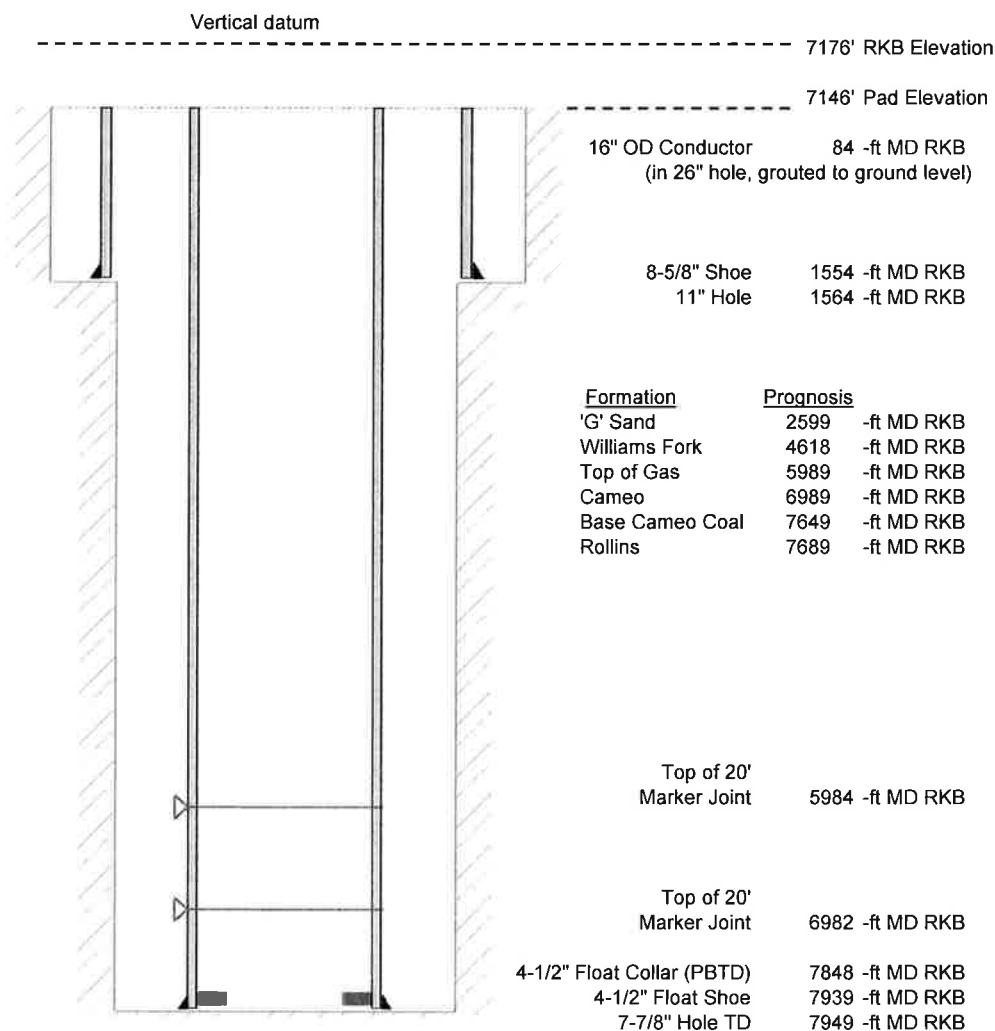


Laramie Energy, LLC  
 Gunderson BCU 20-05E  
 Slot B-6  
 H&P 522 (30-ft KB)

API # : 05-077-10344  
 NE/4 NW/4 S20/T9S/R93W/6th PM  
 Mesa County, CO  
 Date of diagram : 7/1/2017



#### Cementing details

8-5/8" 24# J55 STC Surface Csg	Lead	Tail
Density (ppg)	12.3	12.8
Volume (sx)	197	109
Yield (cf/sx)	2.46	2.18
Top (ft RKB)	0	620
Bottom (ft RKB)	620	1554
Returns (full or partial)	Full	Full

4-1/2" 11.6# Nexteel-80 LTC Prod Csg	Lead	Tail
Density (ppg)	12.5	13.3
Volume (sx)	834	427
Yield (cf/sx)	1.94	1.73
Est Top (ft RKB)	0	4889
Est Bottom (ft RKB)	4889	7939
Returns (full or partial)	Full	Full

Displacement
8.3 ppg
122 bbls

Other Remarks : 28 bbls of good cement to surface on surface job. 40 bbls spacer + 10 bbls cement back to surface for production job.