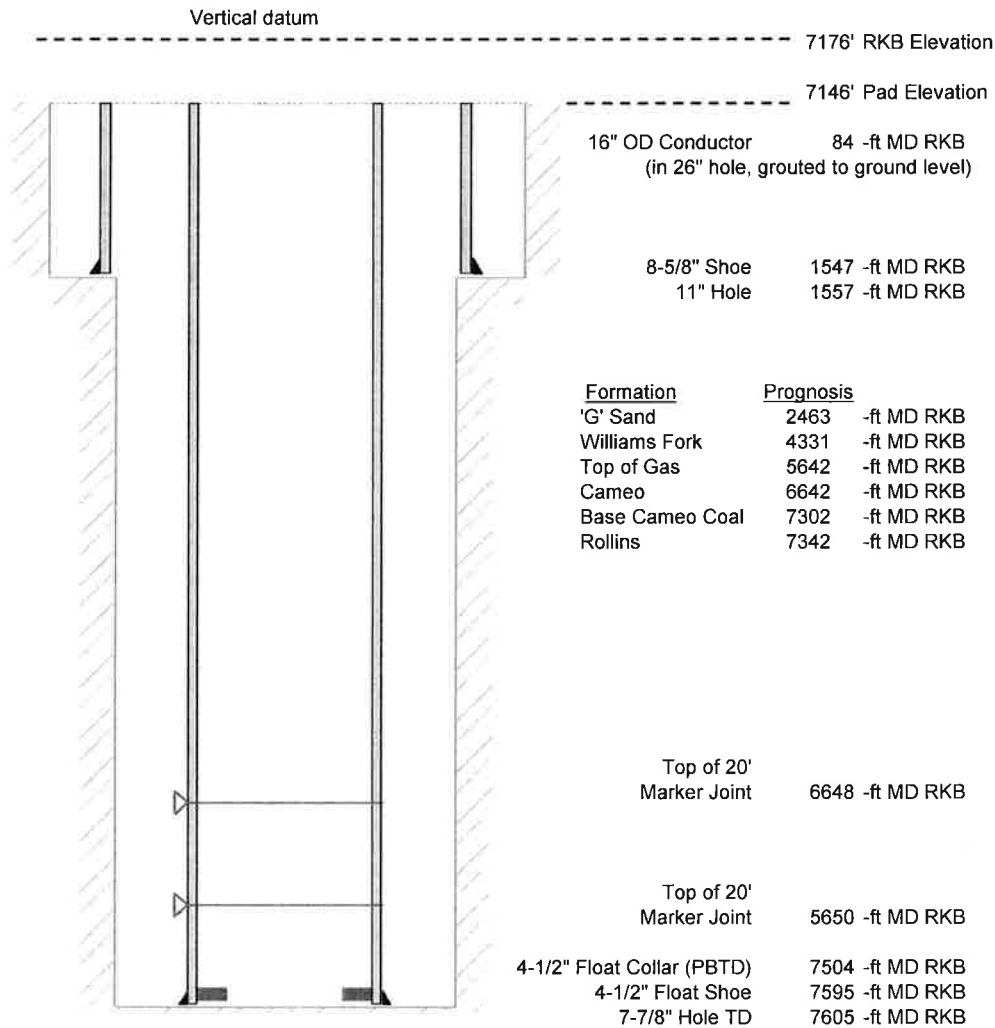


Laramie Energy, LLC
 Gunderson 20-05W
 Slot A-6
 H&P 522 (30-ft KB)

API # : 05-077-10339
 NE/4 NW/4 S20/T9S/R93W/6th PM
 Mesa County, CO
 Date of diagram : 6/27/2017



Cementing details

8-5/8" 24# J55 STC Surface Csg	Lead	Tail
Density (ppg)	12.3	12.8
Volume (sx)	197	109
Yield (cf/sx)	2.46	2.18
Top (ft RKB)	0	679
Bottom (ft RKB)	679	1547
Returns (full or partial)	Full	Full

4-1/2" 11.6# Nexteel-80 LTC Prod Csg	Lead	Tail
Density (ppg)	12.5	13.3
Volume (sx)	773	427
Yield (cf/sx)	1.94	1.73
Est Top (ft RKB)	121	4389
Est Bottom (ft RKB)	4389	7595
Returns (full or partial)	Full	Full

Displacement
8.3 ppg
116 bbls

Other Remarks : 15 bbls cement back to surface on surface job. 35 bbls spacer back to surface on production job.