

HALLIBURTON

iCem[®] Service

LARAMIE ENERGY LLC EBUSINESS

For: Laramie

Date: Friday, June 23, 2017

GUNDERSON 20-05W Surface

API# 05-077-10339-00

Sincerely,

Grand Junction Cement Engineering

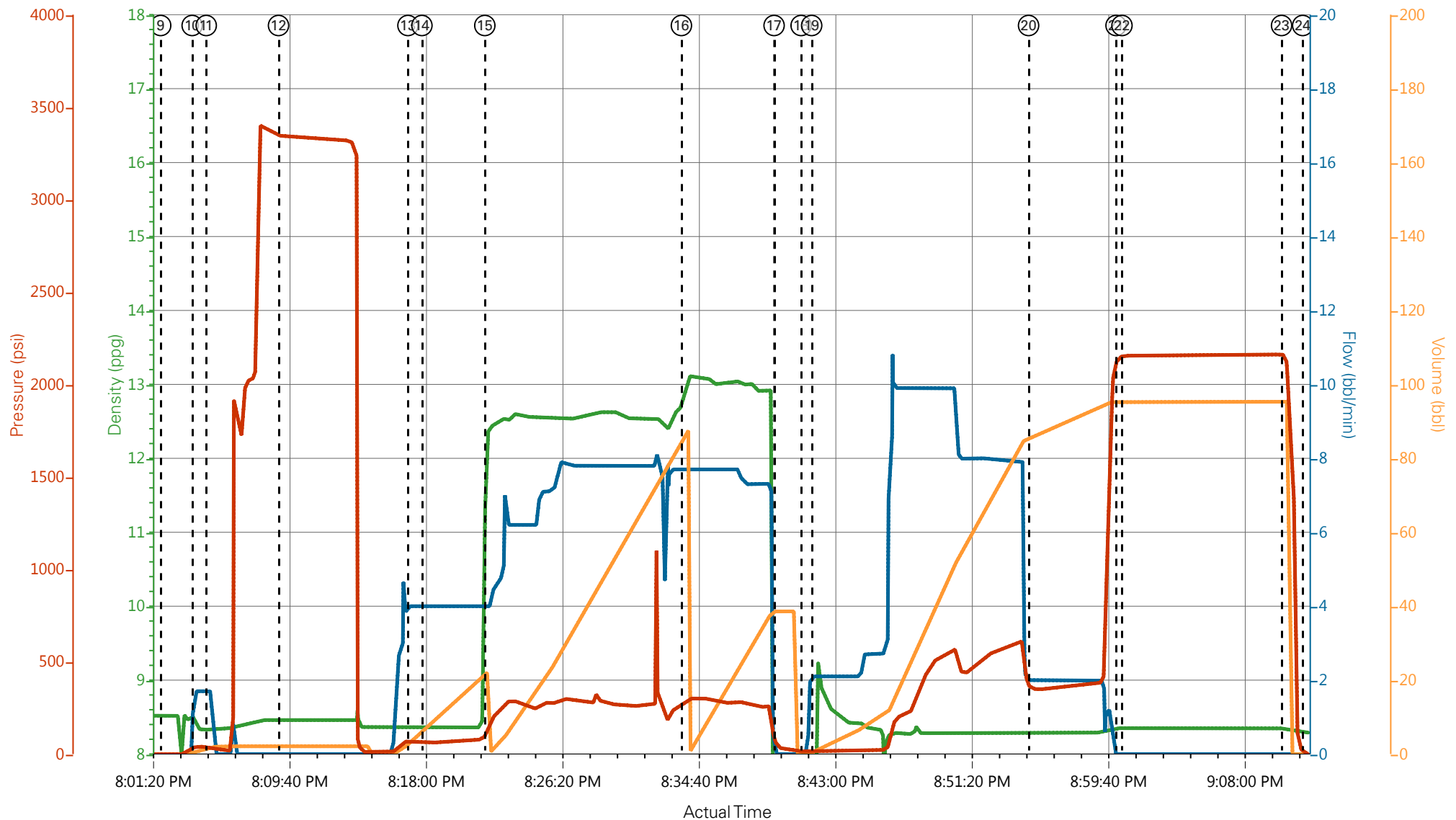
1.0 Real-Time Job Summary

1.1 Job Event Log

| Type | Seq. No. | Graph Label | Date | Time | Source | Pass-Side Pump Pressure (psi) | Downhole Density (ppg) | Combined Pump Rate (bbl/min) | Pump Stage Total (bbl) | Comments |
|-------|----------|---------------------------------------|-----------|----------|--------|----------------------------------|---------------------------|---------------------------------|---------------------------|--|
| Event | 1 | Call Out | 6/23/2017 | 12:00:00 | USER | | | | | REQUESTED ON LOCATION @ 1800 |
| Event | 2 | Pre-Convoy Safety Meeting | 6/23/2017 | 15:00:00 | USER | | | | | ALL HES PRESENT |
| Event | 3 | Crew Leave Yard | 6/23/2017 | 15:30:00 | USER | | | | | 1 F550, 1 PUMP TRUCK & 1 660 BULK TURCKS, |
| Event | 4 | Arrive At Loc | 6/23/2017 | 17:00:00 | USER | | | | | RIG RUNNING CASING |
| Event | 5 | Assessment Of Location Safety Meeting | 6/23/2017 | 17:05:00 | USER | | | | | MET WITH COMP REP, TYLER, AND WENT OVER NUMBERS AND JOB PROCEDURE. WALKED AROUND LOCATION AND COLLECTED WATER SAMPLE (PH- 7, CHLORIDES- 0, TEMP- 55F). COMP REP WAS OFFERED SDS FOR ALL CHEMICLES USED BY HES. |
| Event | 6 | Pre-Rig Up Safety Meeting | 6/23/2017 | 17:10:00 | USER | | | | | ALL HES PRESENT |
| Event | 7 | Rig-Up Equipment | 6/23/2017 | 18:30:00 | USER | | | | | HES RIGGED UP EQUIPMENT WITHOUT ENTERING RED ZONE. |
| Event | 8 | Pre-Job Safety Meeting | 6/23/2017 | 19:40:00 | USER | | | | | ALL HES AND RIG CREW PRESENT |
| Event | 9 | Start Job | 6/23/2017 | 20:02:00 | COM6 | | | | | TD 1557', TP 1547', SJ 42.13', OH 11'', CSG 8.625" 24#, MUD 9.4 PPG. RIG CIRCULATED WELL @ APPROX 10 BPM FOR 1 HR. |
| Event | 10 | Fill Lines | 6/23/2017 | 20:03:55 | USER | 40.00 | 8.3 | 1.70 | 2.3 | 8.33 PPG FRESH WATER |
| Event | 11 | Drop Bottom Plug | 6/23/2017 | 20:04:46 | USER | | | | | PLUG WENT, VERIFIED BY CO REP |
| Event | 12 | Test Lines | 6/23/2017 | 20:09:11 | COM6 | 3344.00 | 8.36 | 0.00 | 0.5 | ALL LINES HELD PRESSURE AT 3344 PSI |
| Event | 13 | Pump Spacer 1 | 6/23/2017 | 20:17:05 | COM6 | 64.00 | 8.36 | 4.00 | 20.4 | 8.33 PPG FRESH WATER (20BBL) |
| Event | 14 | Check weight | 6/23/2017 | 20:17:57 | COM6 | | | | | WEIGHT VERIFIED VIA PRESSUREIZED MUD SCALES |
| Event | 15 | Pump Lead Cement | 6/23/2017 | 20:21:47 | COM6 | 156.00 | 12.36 | 8.00 | 86.3 | VARICEM CEMENT 197 SKS (86 BBLS), 12.3 PPG, 2.46 |

| | | | | | | | | | | |
|----------------------|----|--|-----------|----------|------|---------|-------|------|------|---|
| FT3/SK, 14.17 GAL/SK | | | | | | | | | | |
| Event | 16 | Pump Tail Cement | 6/23/2017 | 20:33:47 | COM6 | 267.00 | 12.82 | 7.90 | 41.8 | VARICEM CEMENT 109 SKS (42 BBLS), 12.8 PPG, 2.18 FT3/SK, 12.11 GAL/SK. |
| Event | 17 | Shutdown | 6/23/2017 | 20:39:27 | USER | | | | | END OF CEMENT |
| Event | 18 | Drop Top Plug | 6/23/2017 | 20:41:06 | USER | | | | | PLUG WENT, VERIFIED BY CO REP |
| Event | 19 | Pump Displacement | 6/23/2017 | 20:41:45 | COM6 | 10.00 | 8.35 | 10.0 | 85.8 | 8.34 PPG FRESH WATER (95.86 BBLS) |
| Event | 20 | Slow Rate | 6/23/2017 | 20:55:00 | USER | 352.00 | 8.29 | 2.00 | 10.0 | SLOW RATE TO 2 BPM PER CO REP TO LAND PLUG |
| Event | 21 | Bump Plug | 6/23/2017 | 21:00:20 | USER | 2148.00 | 8.35 | 0.00 | 95.8 | LAND PLUG AT 395 PSI, BROUGHT UP TO 893 PSI |
| Event | 22 | Test Lines | 6/23/2017 | 21:00:42 | COM6 | 2156.00 | 8.34 | 0.00 | 95.8 | CASING TEST, ALL LINES HELD PRESSURE AT 2156 PSI |
| Event | 23 | Check Floats | 6/23/2017 | 21:10:27 | USER | 2161.00 | 8.35 | 0.00 | 95.8 | FLOATS HELD, 1 BBL BACK TO TRUCK |
| Event | 24 | End Job | 6/23/2017 | 21:11:44 | COM6 | | | | | RETURNS THROUGHOUT THE JOB, 15 BBL OF CEMENT BACK TO SURFACE, TOP OF TAIL CEMENT 679', TOP OF LEAD CEMENT 0' (SURFACE). |
| Event | 25 | Post-Job Safety Meeting (Pre Rig-Down) | 6/23/2017 | 21:13:40 | USER | | | | | ALL HES PRESENT |
| Event | 26 | Rig-Down Equipment | 6/23/2017 | 21:20:00 | USER | | | | | ALL HES PRESENT |
| Event | 27 | Pre-Convoy Safety Meeting | 6/23/2017 | 21:30:00 | USER | | | | | ALL HES PRESENT |
| Event | 28 | Crew Leave Location | 6/23/2017 | 21:45:00 | USER | | | | | THANK YOU FOR CHOOSING HALLIBURTON CEMENT, CHRIS SMITH AND CREW |

LARAMIE - GUNDERSON 20-05 W - 8.625" SURFACE



- | | | | | |
|---|---|-------------------------------------|------------------------------------|------------------------|
| ① Call Out n/a;n/a;n/a;n/a | ④ Arrive At Loc n/a;n/a;n/a;n/a | ⑦ Rig-Up Equipment n/a;n/a;n/a;n/a | ⑩ Fill Lines 8.5;1.7;41;0.3 | ⑬ Pump Spacer 1 8.36; |
| ② Pre-Convoy Safety Meeting n/a;n/a;n/a;n/a | ⑤ Assessment Of Location Safety Meeting n/a;n/a;n/a;n/a | ⑧ Pre-Job Safety Meeting 8.52;0;0;0 | ⑪ Drop Bottom Plug 8.33;1.7;40;1.7 | ⑭ Check weight 8.36;4; |
| ③ Crew Leave Yard n/a;n/a;n/a;n/a | ⑥ Pre-Rig Up Safety Meeting n/a;n/a;n/a;n/a | ⑨ Start Job 8.52;0;0;0 | ⑫ Test Lines 8.46;0;3344;2.1 | ⑮ Pump Lead Cement |

III

▼ HALLIBURTON | iCem® Service

Created: 2017-06-23 17:46:26, Version: 4.2.393

Edit

Customer : LARAMIE ENERGY II LLC EBUSINESS

Job Date : 6/23/2017

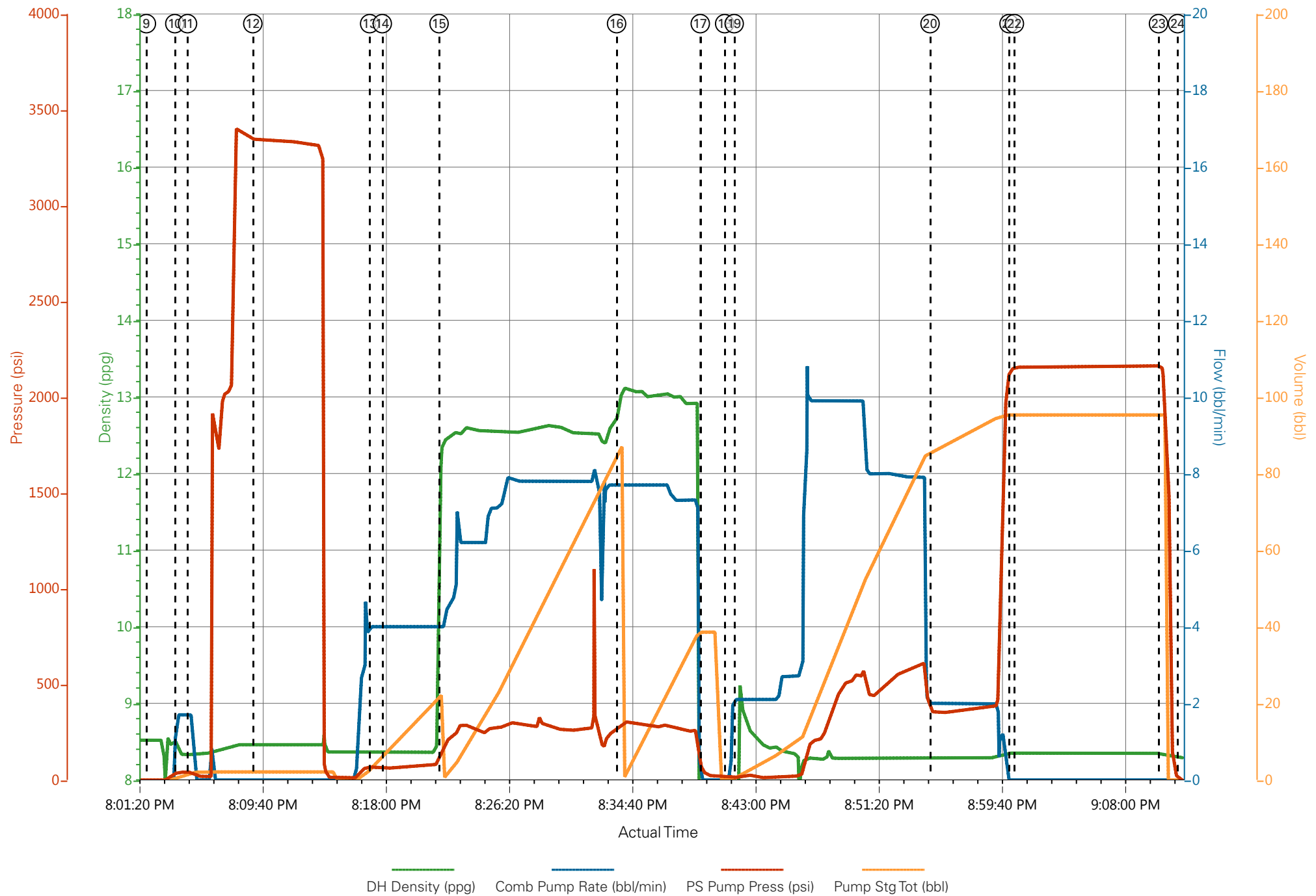
Well : GUNDERSON 20-05 W

Representative : TYLER HALE

Sales Order # : 904117224

ELITE 1 : C.SMITH/K.BENNETT

LARAMIE - GUNDERSON 20-05 W - 8.625" SURFACE



HALLIBURTON

iCem[®] Service

LARAMIE ENERGY LLC

For: Laramie

Date: Tuesday, June 27, 2017

GUNDERSON 20-05W

API #05-077-10339-00

Sincerely,

Grand Junction Cement Engineering

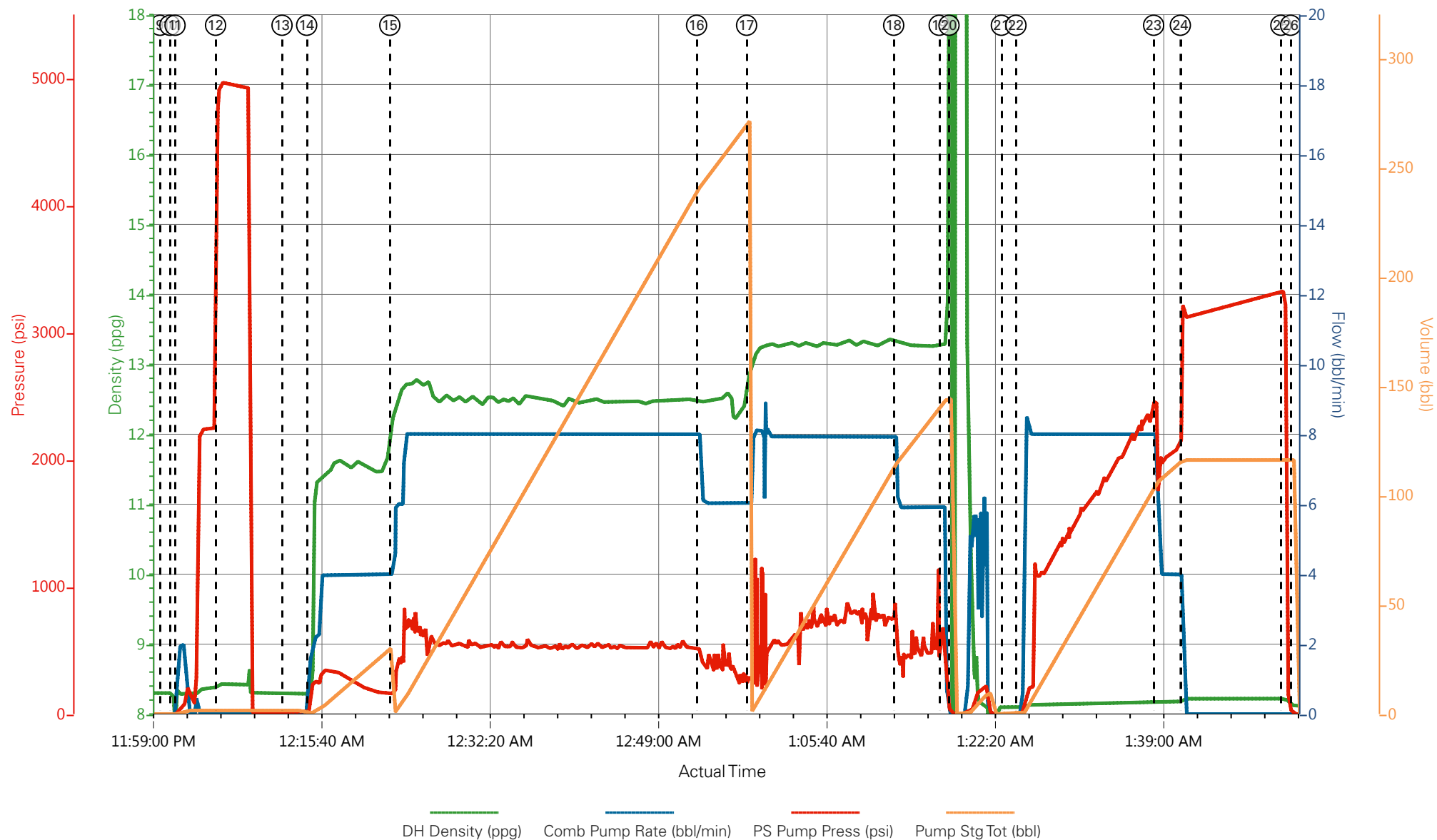
1.0 Real-Time Job Summary

1.1 Job Event Log

| Type | Seq. No. | Graph Label | Date | Time | Source | DH Density (ppg) | Comb Pump Rate (bbl/min) | PS Pump Press (psi) | Pump Stg Tot (bbl) | Comments |
|-------|----------|---------------------------------------|-----------|----------|--------|---------------------|-----------------------------|------------------------|-----------------------|---|
| Event | 1 | Call Out | 6/26/2017 | 14:30:00 | USER | | | | | REQUESTED ON LOCATION @ 20:30 |
| Event | 2 | Pre-Convoy Safety Meeting | 6/26/2017 | 16:45:00 | USER | | | | | ALL HES PRESENT |
| Event | 3 | Crew Leave Location | 6/26/2017 | 17:00:00 | USER | | | | | 1 HT 400 PUMP TRUCK E1, 1 450 SERVICE PICKUP LEFT PREVIOUS LOCATION FOR LARAMIE AND 1 660 BULK TRUCK AND 1 550 SERVICE PICKUP LEFT YARD |
| Event | 4 | Arrive At Loc | 6/26/2017 | 19:30:00 | USER | | | | | RIG RUNNING CASING UPON HES ARRIVAL |
| Event | 5 | Assessment Of Location Safety Meeting | 6/26/2017 | 20:00:00 | USER | | | | | MET WITH COMP REP, AND WENT OVER NUMBERS AND JOB PROCEDURE. WALKED AROUND LOCATION AND COLLECTED WATER SAMPLE (PH- 7, CHLORIDES- 0, TEMP- 70F). COMP REP WAS OFFERED SDS FOR ALL CHEMICLES USED BY HES. |
| Event | 6 | Spot Equipment | 6/26/2017 | 20:15:00 | USER | | | | | 1 HT 400 PUMP TRUCK E1, 1660 BULK TRUCK, 2 SERVICE PICKUPS |
| | | | | | | | | | | ALL HES PRESENT |
| Event | 7 | Pre-Rig Up Safety Meeting | 6/26/2017 | 20:30:00 | USER | | | | | |
| Event | 8 | Pre-Job Safety Meeting | 6/26/2017 | 23:30:00 | USER | | | | | ALL HES EMPLOYEES AND RIG CREW PRESENT, RIG CIRCULATED @ 10 BPM 1 HOUR PRIOR TO JOB PRESSURE @ 920 PSI. |
| Event | 9 | Start Job | 6/27/2017 | 00:00:00 | COM5 | | | | | TD 7605', TP 7594.35' OF 4 ½" 11.6# CSG, SJ 90.89', SURFACE CSG 8 5/8" 32.3# J55 SET @ 1,547', OH 7 7/8", MUD 9.3 PPG |
| Event | 10 | Drop Bottom Plug | 6/27/2017 | 00:00:58 | USER | | | | | VERIFIED BY FLAG INDICATOR |

| | | | | | | | | | | |
|-------|----|-----------------------------|-----------|----------|------|------|-----|------|-------|--|
| Event | 11 | Prime Lines | 6/27/2017 | 00:01:29 | COM5 | 8.33 | 2.0 | 240 | 2 | FRESH WATER |
| Event | 12 | Test Lines | 6/27/2017 | 00:05:29 | COM5 | | | 4950 | | PRESSURE HELD |
| Event | 13 | Check weight | 6/27/2017 | 00:12:04 | COM5 | | | | | WEIGHT VERIFIED VIA PRESSUREIZED MUD SCALES |
| Event | 14 | Pump Tuned Spacer III | 6/27/2017 | 00:14:30 | COM5 | 11.0 | 4.0 | 200 | 40 | 40 BBL TUNED SPACER III, 11 PPG, 4.86 FT3/SK, 31.9 GAL/SK |
| Event | 15 | Pump Lead Cement | 6/27/2017 | 00:22:44 | COM5 | 12.3 | 8.0 | 570 | 267 | 773 SKS OF NEOCEM CMT 12.5 PPG, 1.94 FT3/SK, 9.6 GAL/SK. HEIGHT OF TAIL 3204.4', TOP OF TAIL 4389.93' FOR TRUE HOLE CALCULATION |
| Event | 16 | Slow Rate | 6/27/2017 | 00:53:06 | USER | | | | | SLOWED TO END SILO |
| Event | 17 | Pump Tail Cement | 6/27/2017 | 00:58:03 | COM5 | 13.3 | 8.0 | 700 | 131.5 | 427 SKS NEOCEM CMT 13.3 PPG, 1.73 FT3/SK, 7.81 GAL/SK. HEIGHT OF LEAD 4389.93', TOP OF LEAD IS SURFACE FOR TRUE HOLE CALCULATION |
| Event | 18 | Slow Rate | 6/27/2017 | 01:12:37 | USER | | | | | SLOWED TO END SILO |
| Event | 19 | Shutdown | 6/27/2017 | 01:17:07 | USER | | | | | END OF CEMENT |
| Event | 20 | Clean Pump And Lines | 6/27/2017 | 01:18:05 | USER | | | | | WASHED UP INTO CELLUR |
| Event | 21 | Drop Top Plug | 6/27/2017 | 01:23:16 | COM5 | | | | | VERIFIED BY FLAG INDICATOR AND CO. REP |
| Event | 22 | Pump Displacement | 6/27/2017 | 01:24:43 | COM5 | 8.33 | 8.0 | 2450 | 106.3 | 1 GAL MMCR IN FIRST 10 BBLS, 5 GALS CLAY WEB THROUGHT DISPLACEMENT |
| Event | 23 | Slow Rate | 6/27/2017 | 01:38:21 | USER | 8.33 | 4.0 | 1995 | 10 | SLOWED RATE TO BUMP PLUG |
| Event | 24 | Bump Plug | 6/27/2017 | 01:40:59 | COM5 | 8.33 | 4.0 | 2150 | 116.3 | PLUG BUMPED, BROUGHT PSI UP TO 3184 FOR A 10 MIN CSG TEST. |
| Event | 25 | Check Floats | 6/27/2017 | 01:50:57 | COM5 | | | 3309 | | FLOATS HELD 1.5 BBL FLOW BACK |
| Event | 26 | End Job | 6/27/2017 | 01:51:54 | COM5 | | | | | 35 BBLS TUNED SPACER TO SURFACE |
| Event | 27 | Pre-Rig Down Safety Meeting | 6/27/2017 | 02:00:00 | USER | | | | | ALL HES PRESENT |
| Event | 28 | Crew Leave Location | 6/27/2017 | 02:11:36 | USER | | | | | ALL HES PRESENT |
| Event | 29 | Pre-Convoy Safety Meeting | 6/27/2017 | 03:45:00 | USER | | | | | THANK YOU FOR CHOOSING HALLIBURTON CEMENT, DUSTIN HYDE AND CREW |

LARAMIE, GUNDERSON 20-05W, 4 1/2" PRODUCTION



- | | | | | | |
|---|-----------------------------|-------------------------|-------------------------|----------------------|--------------------------------|
| ① Call Out | ⑥ Spot Equipment | ⑪ Prime Lines | ⑯ Slow Rate | 21 Drop Top Plug | 26 End Job |
| ② Pre-Convoy Safety Meeting | ⑦ Pre-Rig Up Safety Meeting | ⑫ Test Lines | ⑰ Pump Tail Cement | 22 Pump Displacement | 27 Pre-Rig Down Safety Meeting |
| ③ Crew Leave Location | ⑧ Pre-Job Safety Meeting | ⑬ Check weight | ⑱ Slow Rate | 23 Slow Rate | 28 Crew Leave Location |
| ④ Arrive At Loc | ⑨ Start Job | ⑭ Pump Tuned Spacer III | ⑲ Shutdown | 24 Bump Plug | 29 Pre-Convoy Safety Meeting |
| ⑤ Assessment Of Location Safety Meeting | ⑩ Drop Bottom Plug | ⑮ Pump Lead Cement | 20 Clean Pump And Lines | 25 Check Floats | |

▼ **HALLIBURTON** | iCem® Service

Created: 2017-06-26 21:53:18, Version: 4.2.393

Edit

Customer : LARAMIE ENERGY II LLC

Job Date : 6/26/2017

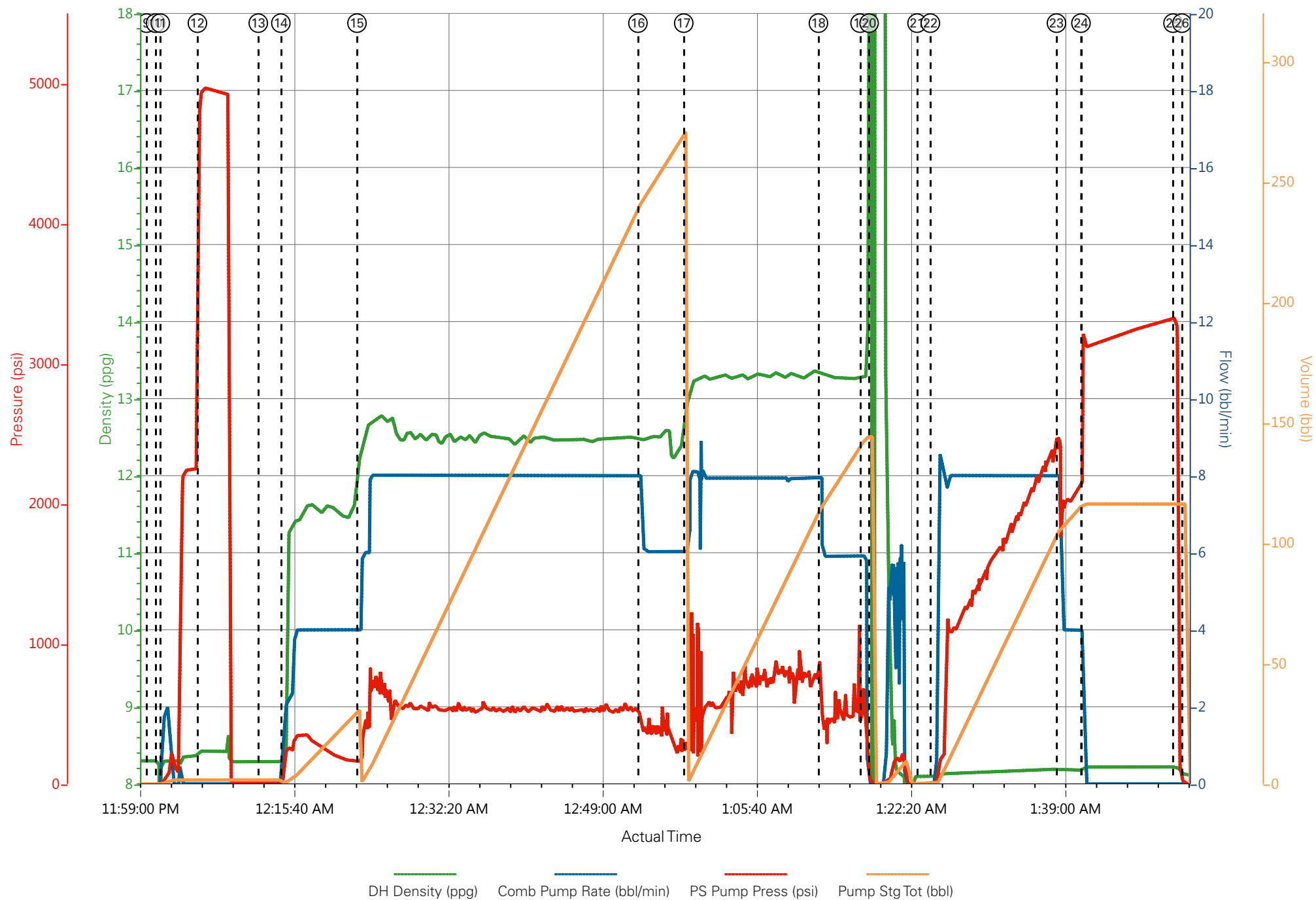
Well : GUNDERSON 20-05W

Representative : TYLER HALE

Sales Order # : 904126402

ELITE 1 : HYDE / MARTIN

LARAMIE, GUNDERSON 20-05W, 4 1/2" PRODUCTION



Job Information

| | | | | | |
|----------------|----------------|----------|-------------------|------------|----------------------|
| Request/Slurry | 2397211/1 | Rig Name | H&P 522 | Date | 24/JUN/2017 |
| Submitted By | Aaron Katz | Job Type | Production Casing | Bulk Plant | Grand Junction |
| Customer | Laramie Energy | Location | Garfield | Well | Gunderson BCU 20-05W |

Well Information

| | | | | | |
|-------------------|----------|-----------|---------|------|---------------|
| Casing/Liner Size | 4.5 in | Depth MD | 7585 ft | BHST | 113°C / 236°F |
| Hole Size | 7.875 in | Depth TVD | 7592 ft | BHCT | 71°C / 159°F |
| Pressure | 4610 psi | | | | |

Drilling Fluid Information

| | | | | | |
|-------------------|--------|----------------|------------|---------|-------------|
| Mud Supplier Name | Baroid | Mud Trade Name | BARADRIL-N | Density | 9.9 lbm/gal |
|-------------------|--------|----------------|------------|---------|-------------|

Cement Information - Lead Design



| Conc | UOM | Cement/Additive | Sample Type | Sample Date | Lot No. | Cement Properties | | |
|------|-----|-----------------|-------------|-------------|---------|-------------------|------------------------|----------|
| | | | | | | Slurry Density | 12.5 | lbm/gal |
| | | | | | | Slurry Yield | 1.941 | ft3/sack |
| | | | | | | Water Requirement | 9.623 | gal/sack |
| | | | | | | Total Mix Fluid | 9.623 | gal/sack |
| | | | | | | Water Source | Field (Fresh) Water | |
| | | | | | | Water Chloride | | |

This report is the property of Halliburton Energy Services and neither it nor any part thereof, nor a copy thereof, is to be published or disclosed without first securing the expressed written approval of Halliburton. It may however be used in the course of regular business operations by any person or concern receiving such report from Halliburton. This report is for information purposes only and the content is limited to the sample described. Halliburton makes no warranties, expressed or implied, as to the accuracy of the contents or results. Any user of this report agrees Halliburton shall not be liable for any loss or damage regardless of cause, including any act or omission of Halliburton, resulting from the use hereof.

Operation Test Results Request ID 2397211/1

Thickening Time - ON-OFF-ON

25/JUN/2017

| Test Temp (°F) | Pressure (psi) | Reached in (min) | 30 Bc (hh:mm) | 50 Bc (hh:mm) | 70 Bc (hh:mm) | 100 Bc (hh:mm) | Start Bc | Stirring before stop (mins) | Static Period (min) | Peak reading (BC) |
|----------------|----------------|------------------|---------------|---------------|---------------|----------------|----------|-----------------------------|---------------------|-------------------|
| 159 | 4610 | 39 | 3:32 | 3:56 | 4:16 | 5:04 | 6 | 49 | 15 | 17 |

Total sks = 773

Composite:

CS1583 TR#613 386.5 sks

CS1584 TR#199 386.5 sks

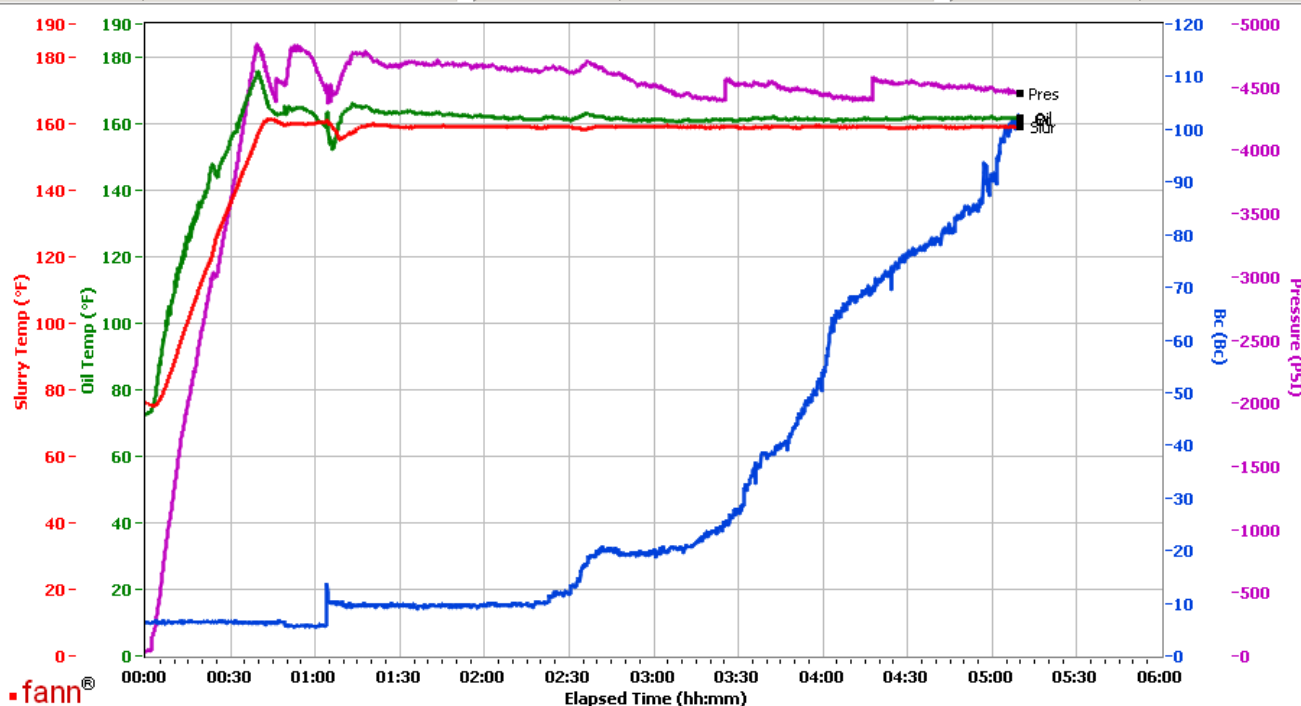
Deflected from 6Bc to 17Bc and back down to 10Bc within one minute

Grand Junction, Colorado

| Fields | Values |
|-------------------|-------------------------------|
| Project Name | GJ2397211-1 LARAMIE BULK LEAD |
| Test ID | 34652357 |
| Request ID | GJ2397211-1 |
| Tested by | DEBA |
| Customer | LARAMIE ENERGY |
| Well No | GUNDERSON BCU 20-05W |
| Rig | H 7P 522 |
| Casing/Liner Size | 4.5" |

| Fields | Values |
|----------------|------------------|
| Job Type | PRODUCTION |
| Cement Type | HOLCIM TYPE I/II |
| Cement Weight | Standard |
| Test Date | 06/25/17 |
| Test Time | 07:08 PM |
| Temp. Units | degF |
| Pressure Units | PSI |
| SW Version | 2.1.0.507 |

| Events | Results |
|-----------|---------|
| 30.00 Bc | 03h:32m |
| 40.00 Bc | 03h:44m |
| 50.00 Bc | 03h:56m |
| 70.00 Bc | 04h:16m |
| 100.00 Bc | 05h:04m |
| 00h:30m | 6.31 |
| 01h:00m | 5.56 |
| 01h:30m | 9.34 |



Data File C:\Documents and Settings\M290\Local Settings\Temporary Internet Files\Content.IE5\K9YZ0P2R\GJ2397211-1 LARAMIE BULK LEAD[1].tdms

Comments COMPOSITE: CS1583 TR#613 386.5 SKS AND CS1584 TR#199 386.5 SKS

This report is the property of Halliburton Energy Services and neither it nor any part thereof, nor a copy thereof, is to be published or disclosed without first securing the expressed written approval of Halliburton. It may however be used in the course of regular business operations by any person or concern receiving such report from Halliburton. This report is for information purposes only and the content is limited to the sample described. Halliburton makes no warranties, expressed or implied, as to the accuracy of the contents or results. Any user of this report agrees Halliburton shall not be liable for any loss or damage regardless of cause, including any act or omission of Halliburton, resulting from the use hereof.

HALLIBURTON

Rockies, Grand Junction

Lab Results- Tail

Job Information

| | | | | | |
|----------------|----------------|----------|-------------------|------------|----------------------|
| Request/Slurry | 2397212/1 | Rig Name | H&P 522 | Date | 24/JUN/2017 |
| Submitted By | Aaron Katz | Job Type | Production Casing | Bulk Plant | Grand Junction |
| Customer | Laramie Energy | Location | Garfield | Well | Gunderson BCU 20-05W |

Well Information

| | | | | | |
|-------------------|----------|-----------|---------|------|---------------|
| Casing/Liner Size | 4.5 in | Depth MD | 7585 ft | BHST | 113°C / 236°F |
| Hole Size | 7.875 in | Depth TVD | 7592 ft | BHCT | 71°C / 159°F |
| Pressure | 4580 psi | | | | |

Drilling Fluid Information

| | | | | | |
|-------------------|--------|----------------|------------|---------|-------------|
| Mud Supplier Name | Baroid | Mud Trade Name | BARADRIL-N | Density | 9.9 lbm/gal |
|-------------------|--------|----------------|------------|---------|-------------|

Cement Information - Tail Design



| <u>Conc</u> | <u>UOM</u> | <u>Cement/Additive</u> | <u>Sample Type</u> | <u>Sample Date</u> | <u>Lot No.</u> | <u>Cement Properties</u> | |
|-------------|------------|------------------------|--------------------|--------------------|----------------|--------------------------|---------------------|
| | | | | | | Slurry Density | 13.3 lbm/gal |
| | | | | | | Slurry Yield | 1.733 ft3/sack |
| | | | | | | Water Requirement | 7.799 gal/sack |
| | | | | | | Total Mix Fluid | 7.799 gal/sack |
| | | | | | | Water Source | Field (Fresh) Water |
| | | | | | | Water Chloride | |

This report is the property of Halliburton Energy Services and neither it nor any part thereof, nor a copy thereof, is to be published or disclosed without first securing the expressed written approval of Halliburton. It may however be used in the course of regular business operations by any person or concern receiving such report from Halliburton. This report is for information purposes only and the content is limited to the sample described. Halliburton makes no warranties, expressed or implied, as to the accuracy of the contents or results. Any user of this report agrees Halliburton shall not be liable for any loss or damage regardless of cause, including any act or omission of Halliburton, resulting from the use hereof.

Operation Test Results Request ID 2397212/1

Thickening Time - ON-OFF-ON

25/JUN/2017

| Test Temp (°F) | Pressure (psi) | Reached in (min) | 30 Bc (hh:mm) | 50 Bc (hh:mm) | 100 Bc (hh:mm) | Start Bc | Stirring before stop (mins) | Static Period (min) | Peak reading (BC) |
|-------------------|----------------|---------------------|------------------|------------------|-------------------|----------|-----------------------------------|------------------------|----------------------|
| 159 | 4580 | 39 | 2:42 | 2:51 | 2:51 | 16 | 49 | 15 | 17 |

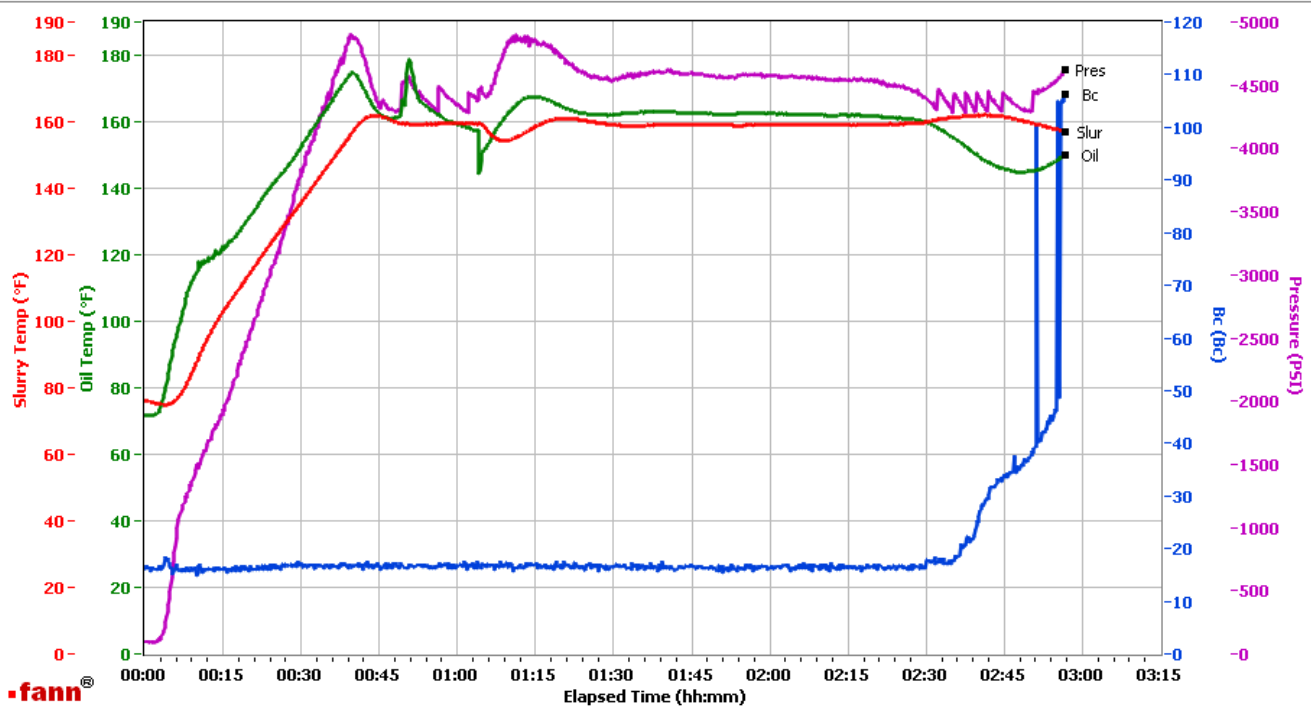
Total sks = 427

CS1585 TR#8678 427 SKS

no deflection was observed

Grand Junction Colorado

| Fields | Values | Fields | Values | Events | Results |
|-------------------|-------------------------------|----------------|-----------|-----------|---------|
| Project Name | GJ2397212-1 LARAMIE BULK TAIL | Job Type | | 30.00 Bc | 02h:42m |
| Test ID | 34652359 | Cement Type | | 40.00 Bc | 02h:51m |
| Request ID | GJ2397212-1 | Cement Weight | Standard | 50.00 Bc | 02h:51m |
| Tested by | DEBA | Test Date | 06/25/17 | 70.00 Bc | 02h:51m |
| Customer | LARAMIE ENERGY | Test Time | 08:57 PM | 100.00 Bc | 02h:51m |
| Well No | GUNDERSON BCU 20-05W | Temp. Units | degF | 00h:30m | 17.39 |
| Rig | | Pressure Units | PSI | 01h:00m | 16.74 |
| Casing/Liner Size | | SW Version | 2.1.0.507 | 01h:30m | 16.37 |



Data File C:\Documents and Settings\Administrator\Local Settings\Temporary Internet Files\Content.IE5\O3KLGZVR\GJ2397212-1 LARAMIE BULK TAIL[1].tdms

Comments CS1586 TR#8678 437 SKS

This report is the property of Halliburton Energy Services and neither it nor any part thereof, nor a copy thereof, is to be published or disclosed without first securing the expressed written approval of Halliburton. It may however be used in the course of regular business operations by any person or concern receiving such report from Halliburton. This report is for information purposes only and the content is limited to the sample described. Halliburton makes no warranties, expressed or implied, as to the accuracy of the contents or results. Any user of this report agrees Halliburton shall not be liable for any loss or damage regardless of cause, including any act or omission of Halliburton, resulting from the use hereof.