



FILE NO:

COMPANY

LARAMIE ENERGY

WELL

GUNDERSON 20-04W

FIELD

VEGA

API NO:
05077103370000

COUNTY

MESA

STATE COLORADO

Ver. 4.06

LOCATION:

LAT: 39.266919N, LONG: 107.795317W

OTHER SERVICES
NONE

SEC 29 TWP 9S RGE 93W

PERMANENT DATUM GL ELEVATION 7488 FT
LOG MEASURED FROM KB 30 FT ABOVE P.D.
DRILL. MEAS. FROM KBELEVATIONS:
KB 7174 FT
DF 7174 FT
GL 7144 FT

DATE 21-JUN-2017

RUN 1 TRIP 1

SERVICE ORDER US124559

DEPTH DRILLER 7680 FT

DEPTH LOGGER 7683 FT

BOTTOM LOGGED INTERVAL 7681 FT

TOP LOGGED INTERVAL 1554 FT

CASING DRILLER 8.625 IN @ 1554 FT

CASING LOGGER 1554 FT

BIT SIZE 7.875 IN

TYPE OF FLUID IN HOLE WBM

DENSITY 9.8 LB/G 71 CP

PH 9.5 NA

SOURCE OF SAMPLE FLOWLINE

RM AT MEAS. TEMP. 6.991 OHMM @ 75 DEGF

RMF AT MEAS. TEMP. 5.2143 OHMM @ 75 DEGF

RMC AT MEAS. TEMP. 8.738 OHMM @ 75 DEGF

SOURCE OF RMF RMC CALCULATED CALCULATED

RM AT BHT 3.000 OHMM @ 183.8 DEGF

TIME SINCE CIRCULATION 7 HRS

MAX. RECORDED TEMP. 196.7 DEGF

EQUIP. NO. LOCATION HL 6741 WOODWARD

RECORDED BY S.YASSA

WITNESSED BY M.TYLER HALE

IN MAKING INTERPRETATIONS OF LOGS OUR EMPLOYEES WILL GIVE THE CUSTOMER THE BENEFIT OF THEIR BEST JUDGEMENT. BUT SINCE ALL INTERPRETATIONS ARE OPINIONS BASED ON INFERENCES FROM ELECTRICAL OR OTHER MEASUREMENTS, WE CANNOT, AND WE DO NOT GUARANTEE THE ACCURACY OR CORRECTNESS OF ANY INTERPRETATION. WE SHALL NOT BE LIABLE OR RESPONSIBLE FOR ANY LOSS, COST, DAMAGES, OR EXPENSES WHATSOEVER INCURRED OR SUSTAINED BY THE CUSTOMER RESULTING FROM ANY INTERPRETATION MADE BY ANY OF OUR EMPLOYEES.

REMARKS

RUN 1 TRIP 1: 1 OPERATION IN WELL
HDIL/ZDL/CN/GR RUN IN COMBINATION

BVOL & CVOL CALCULATED IN CUBIC FEET
CVOL CALCULATED FOR PROPOSED 4.5" CASING
CALIPER VERIFIED IN CASING

ZDL & CN RUN ON LIMESTONE MATRIX
RHO MATRIX: 2.71 G/CC

HDIL RUN WITH 1.5" STANDOFFS
ABC TO CALCULATED: MUD CONDUCTIVITY

WELLBORE RUGOSITY WILL AFFECT THE ACCURACY OF MEASUREMENTS

CREW: J.PENA, D.HUTCHISON
RIG: H&P 522

EQUIPMENT DATA

EQUIPMENT DATA

RUN	TRIP	TOOL	SERIES NO.	SERIAL NO.	POSITION
1	1	TTRM	3981XA	Z180388	FREE
1	1	CR	3514XC	12367092	DECENTRALIZED
1	1	GR	1329XA	10269247	DECENTRALIZED
1	1	CN	2446XA	10162846	FREE
1	1	ZDL	2234XA	10047963	PAD DEVICE
1	1	DKJT	3939XA	10217757	FREE
1	1	HDIL	1515EA/1515MA	10059243/10307148	FREE

BOREHOLE PROFILE LOG FOR 4.5" CASING

ECLIPS 6.2i ECLIPS General Release Rel 6.2i Wed Jun 12 12:21:40 CDT 2013

Updates: 1 Patches: 9

Plotted: Thu Jun 22 10:00:28 2017

PARAMETER AND FILTER SUMMARY REPORT

FILE: /dat1a/LAREME_GUNDERSON_20_04W/GSLAMWGI_XCR02.prm
 LOGGING MODE: DEPTH DIRECTION: UP
 TOP DEPTH: 1455.500 ft BOTTOM DEPTH: 7585.500 ft

SYMMETRIC FILTER

MEASUREMENT TYPE	PARAMETER	VALUE	UNITS	INTERVAL (ft)	
Y AXIS CALIPER	FILTER ()	medium (1)		TOP	BOTTOM
TENSION	FILTER ()	medium (1)		"	"
GR	FILTER ()	medium (1)		"	"
CALIPER	FILTER ()	medium (1)		"	"
	FILTER (.h)	medium (1)		"	"
	FILTER (.i)	medium (1)		"	"
SP-SPDH	FILTER ()	medium (1)		"	"

BOREHOLE & CEMENT

MEASUREMENT TYPE	PARAMETER	VALUE	UNITS	INTERVAL (ft)	
CASING - BOREHOLE & CEMENT VOLUME	CASING O.D.	4.500	in	TOP	BOTTOM
BIT SIZE	BIT SIZE	7.875	in	"	"

CURVE DESCRIPTION REPORT

CURVE NAME	CREATION DATE	CURVE DESCRIPTION
F1:BIT	Jun 22 09:31:35 2017	BIT SIZE
F1:BVOL	Jun 22 09:31:35 2017	BOREHOLE VOLUME
F1:CAL	Jun 22 09:31:35 2017	CALIPER
F1:CVOL	Jun 22 09:31:35 2017	CEMENT VOLUME
F1:GR	Jun 22 09:31:35 2017	GAMMA RAY
F1:SPDH	Jun 22 09:31:35 2017	SPONTANEOUS POTENTIAL PROCESSED IN COMMON REMOTE
F1:TEN	Jun 22 09:31:35 2017	DIFFERENTIAL TENSION

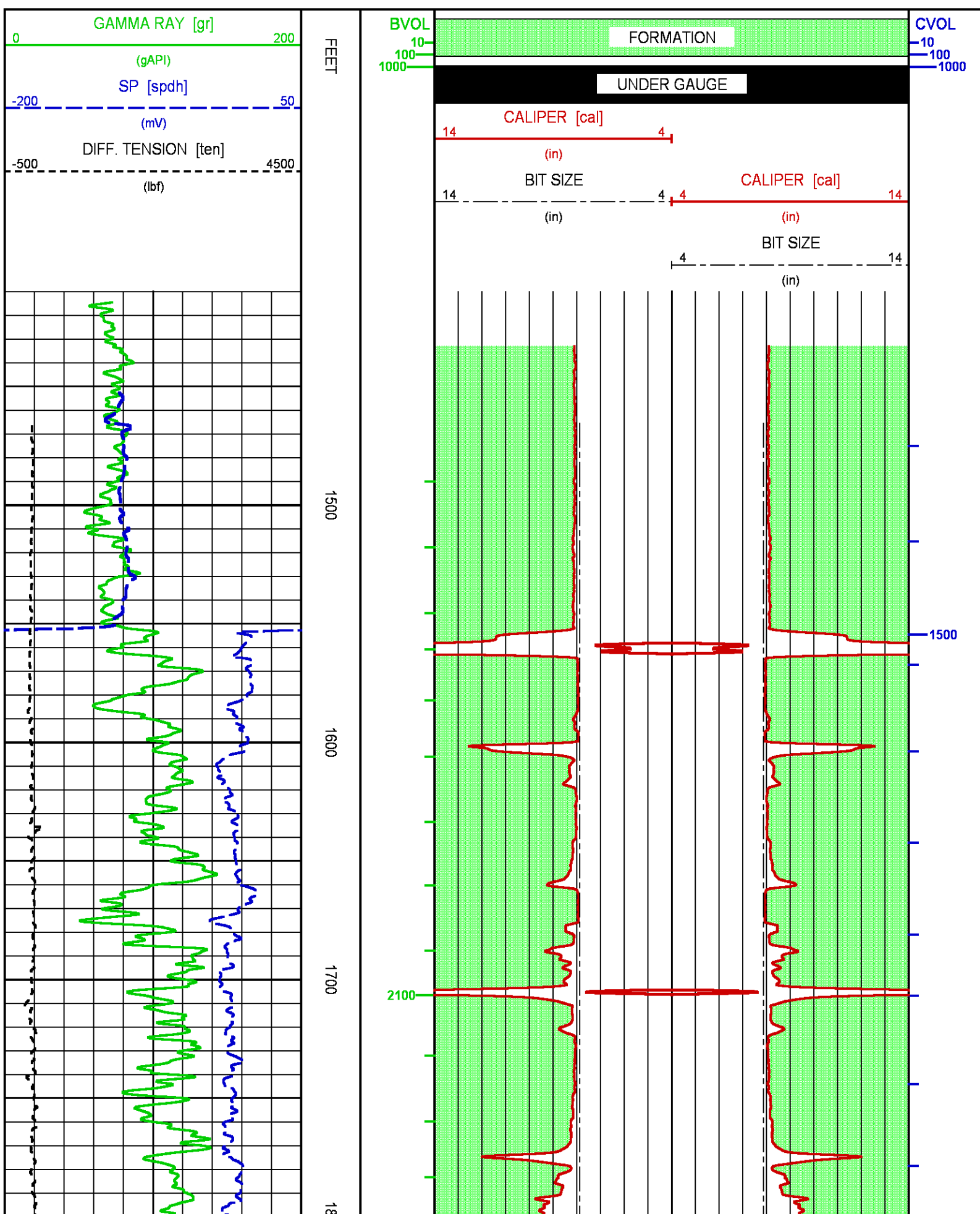
CURVE MEASURE POINT OFFSET

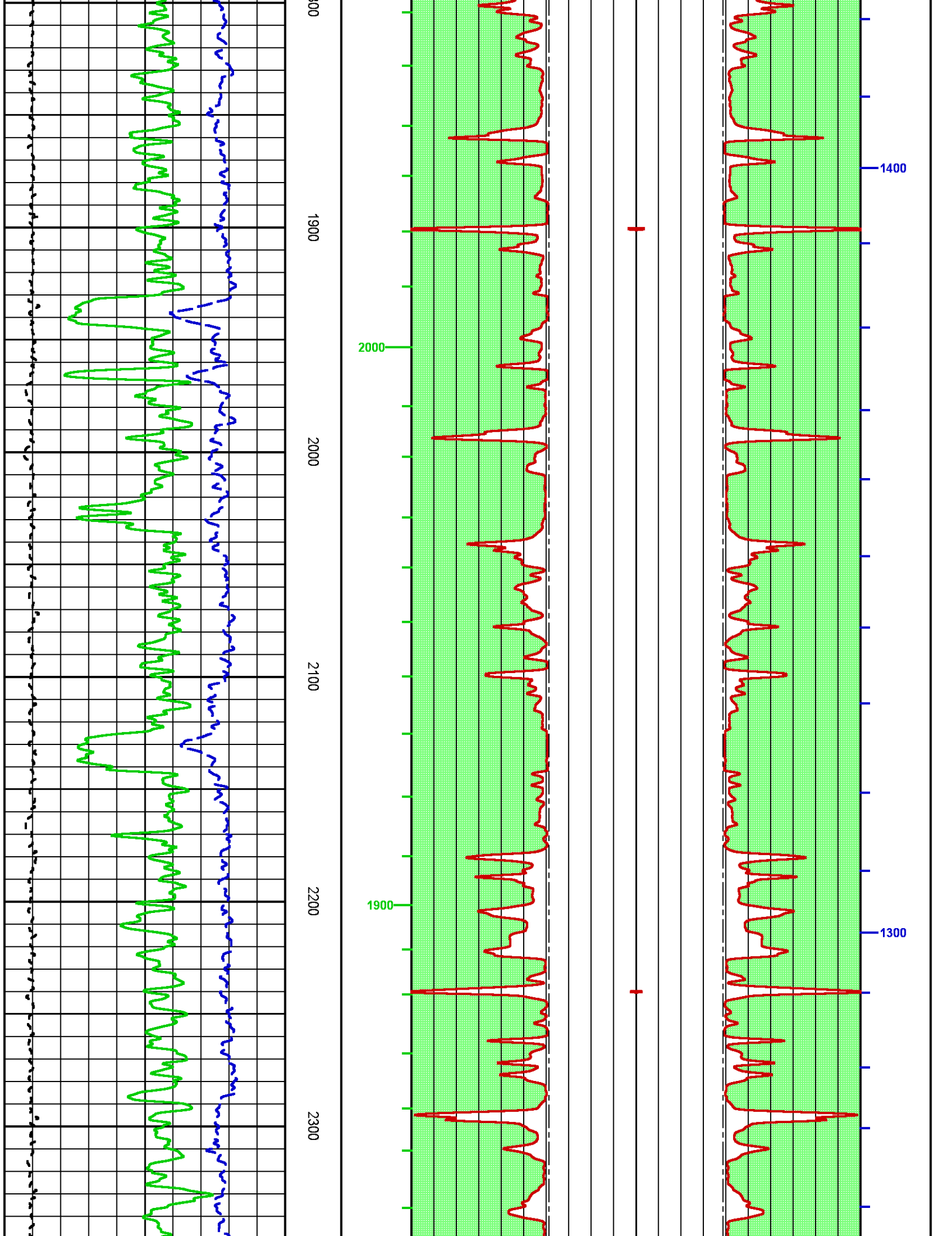
CURVE	OFFSET (ft)	CURVE	OFFSET (ft)	CURVE	OFFSET (ft)	CURVE	OFFSET (ft)
BIT	0.00	GR	52.25	TEN	0.00		
CAL	35.00	SPDH	14.00				

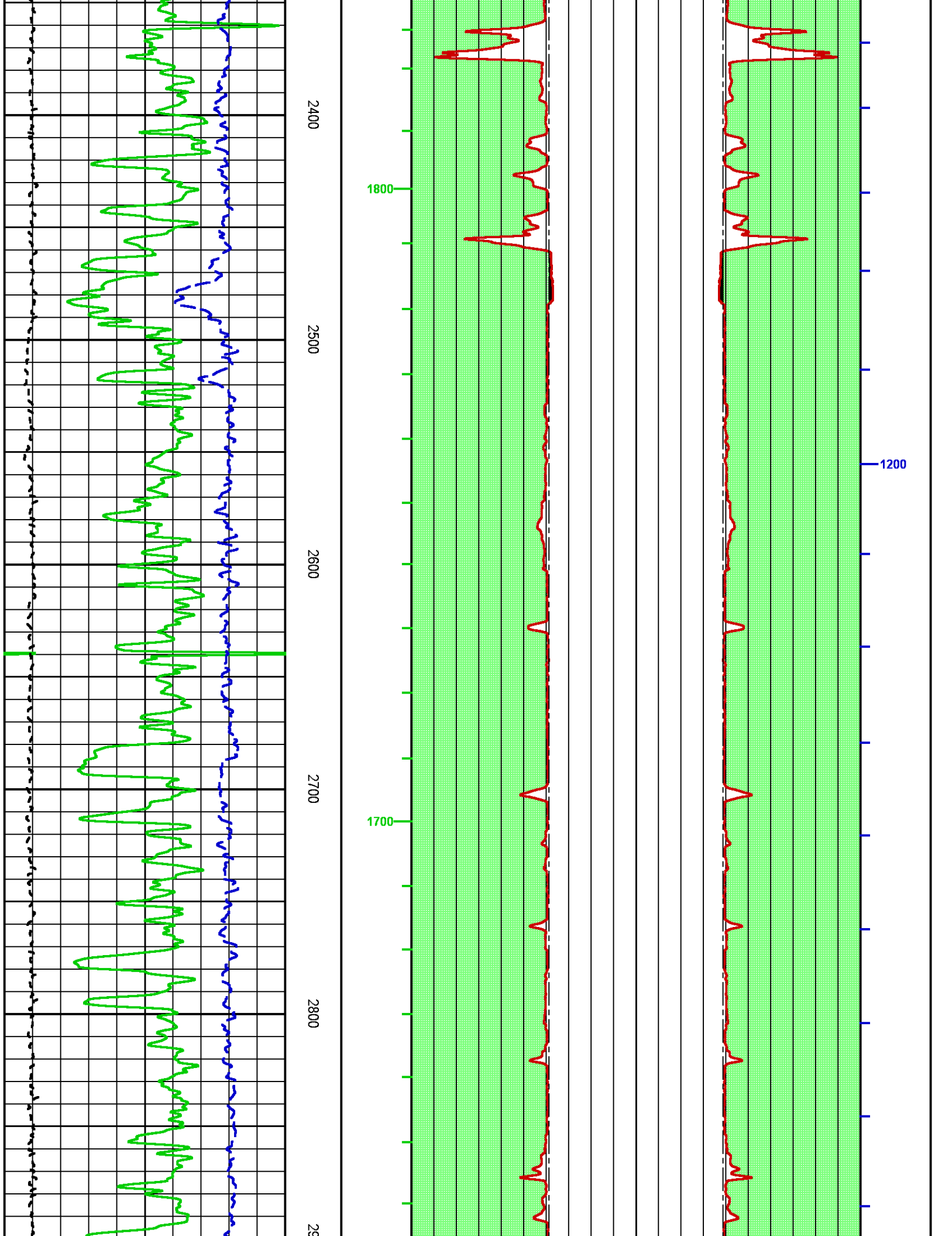
Presentation : cpu100:/dat1a/LAREME_GUNDERSON_20_04W/bhp1cal_GUNDERSON_20_04W_OH_MAIN-2.fvpdf [2"/100' Scale]
 Plot Interval : 1414.5 - 7595.5 Feet

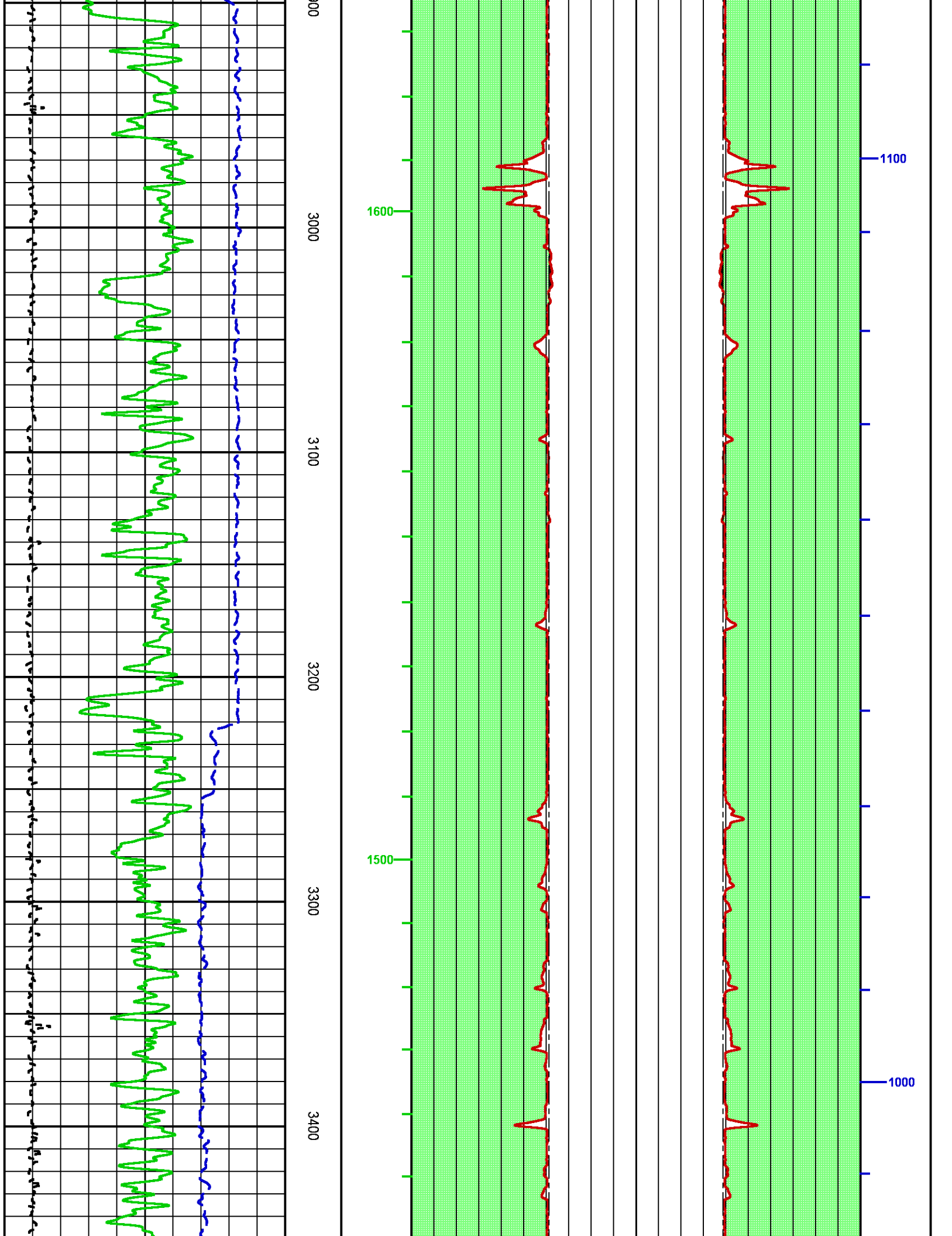
Data File 1 : F1 : cpu100:/dat1a/LAREME_GUNDERSON_20_04W/MSLAM_MAIN_20_04W.xtf
 Created On : Jun 22 09:31:35 2017

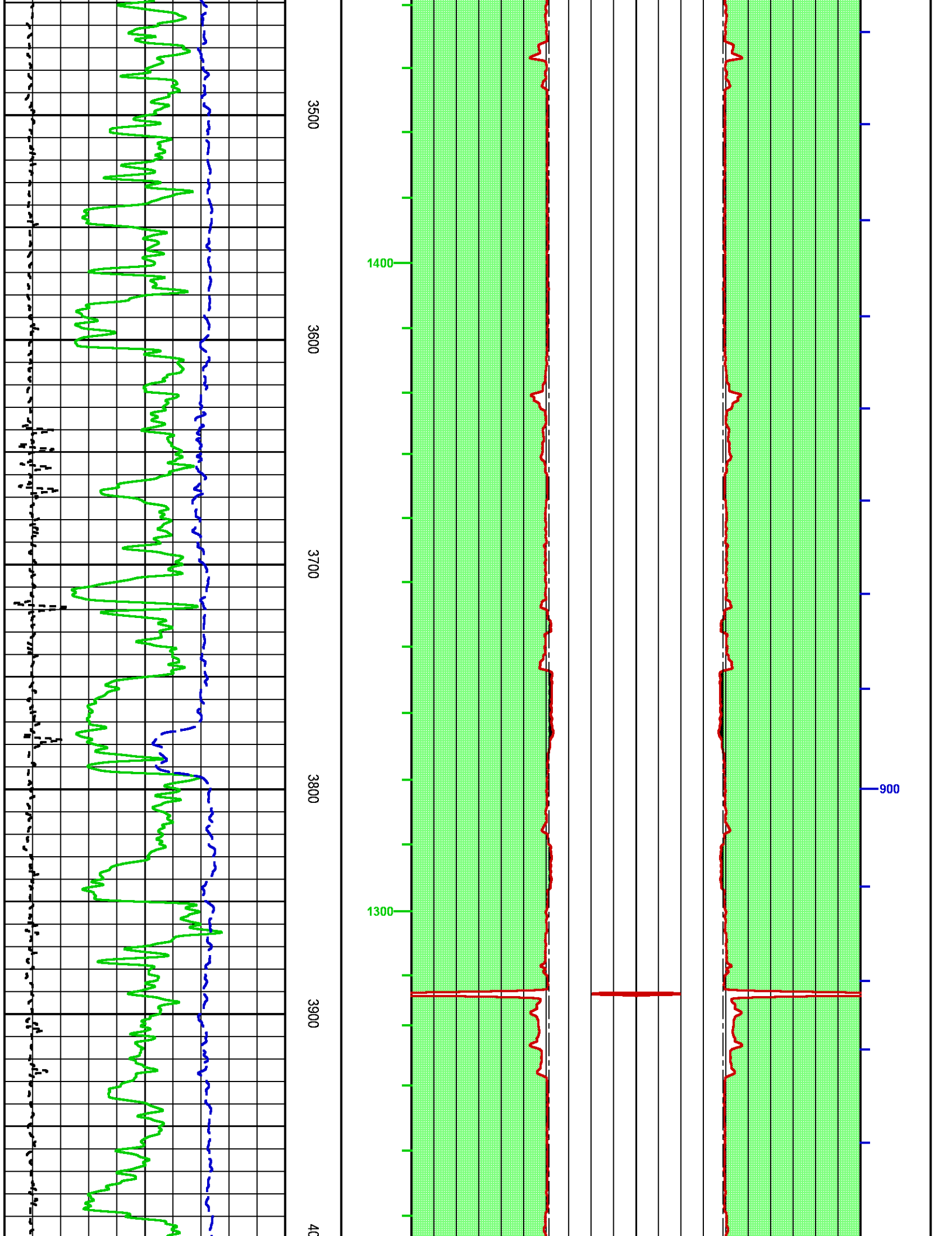
Company : LARAMIE ENERGY
Well : GUNDERSON 20-04W
Field : VEGA
File Interval : 1400 - 7595.5 Feet
OCT : GSLAMWGI

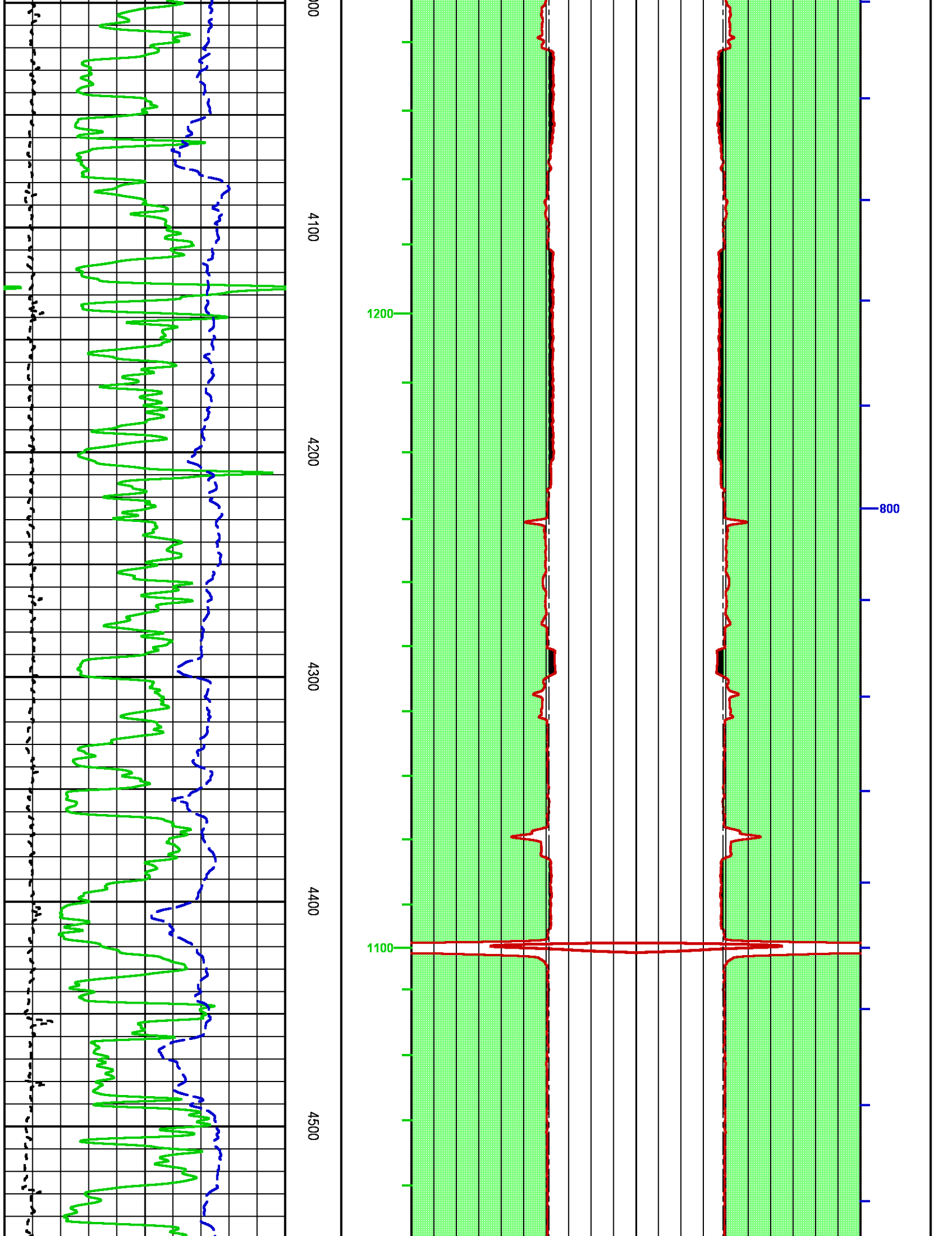


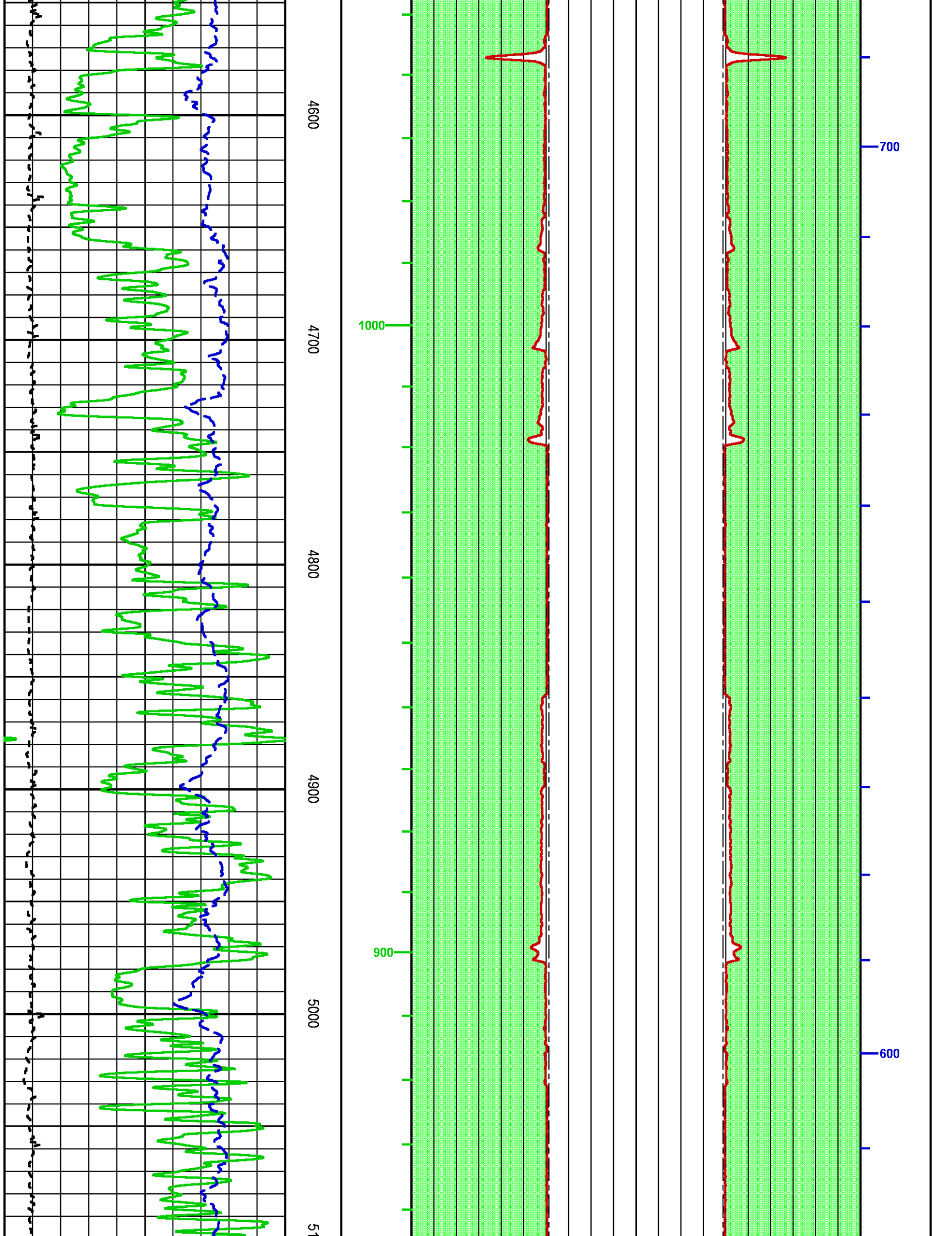


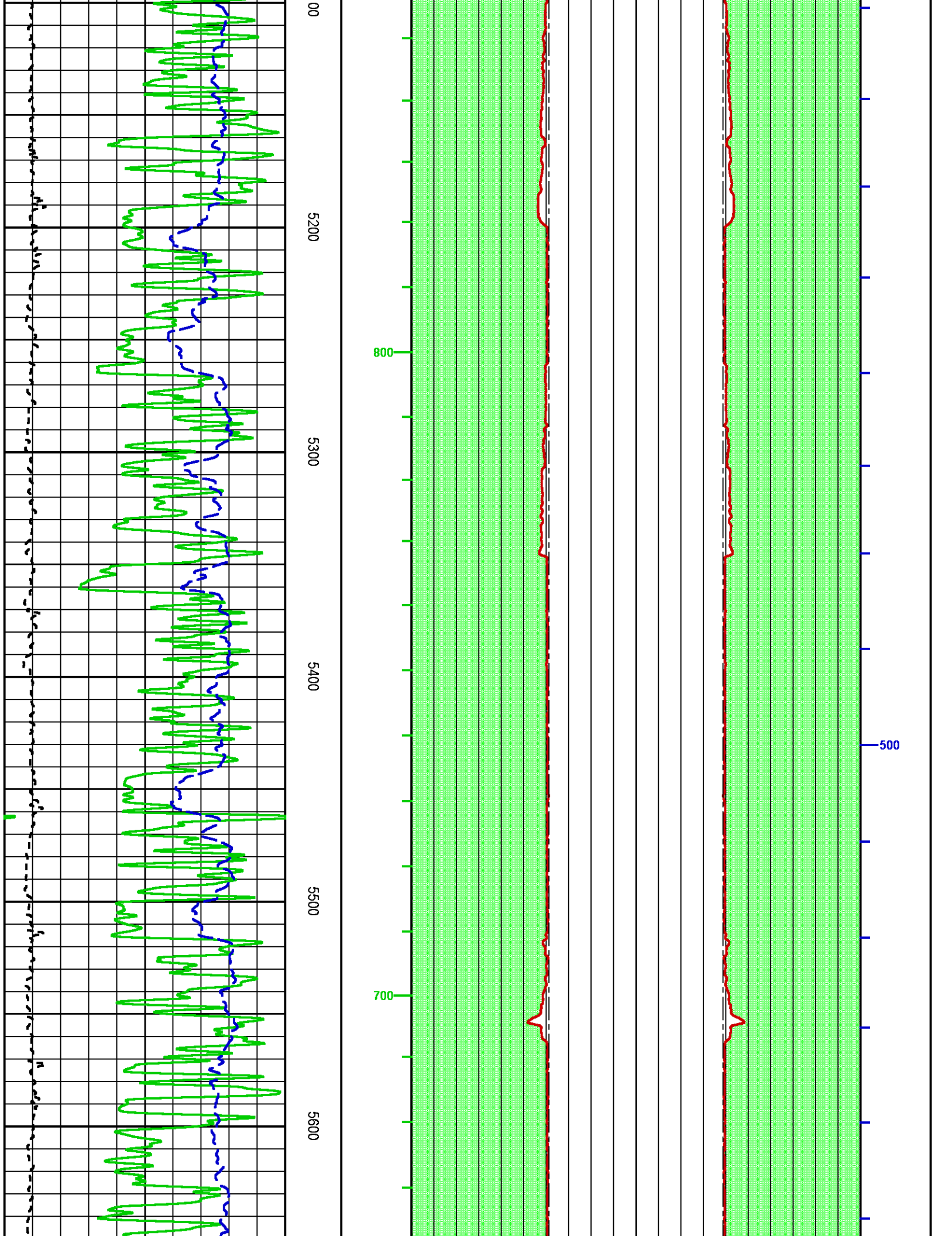


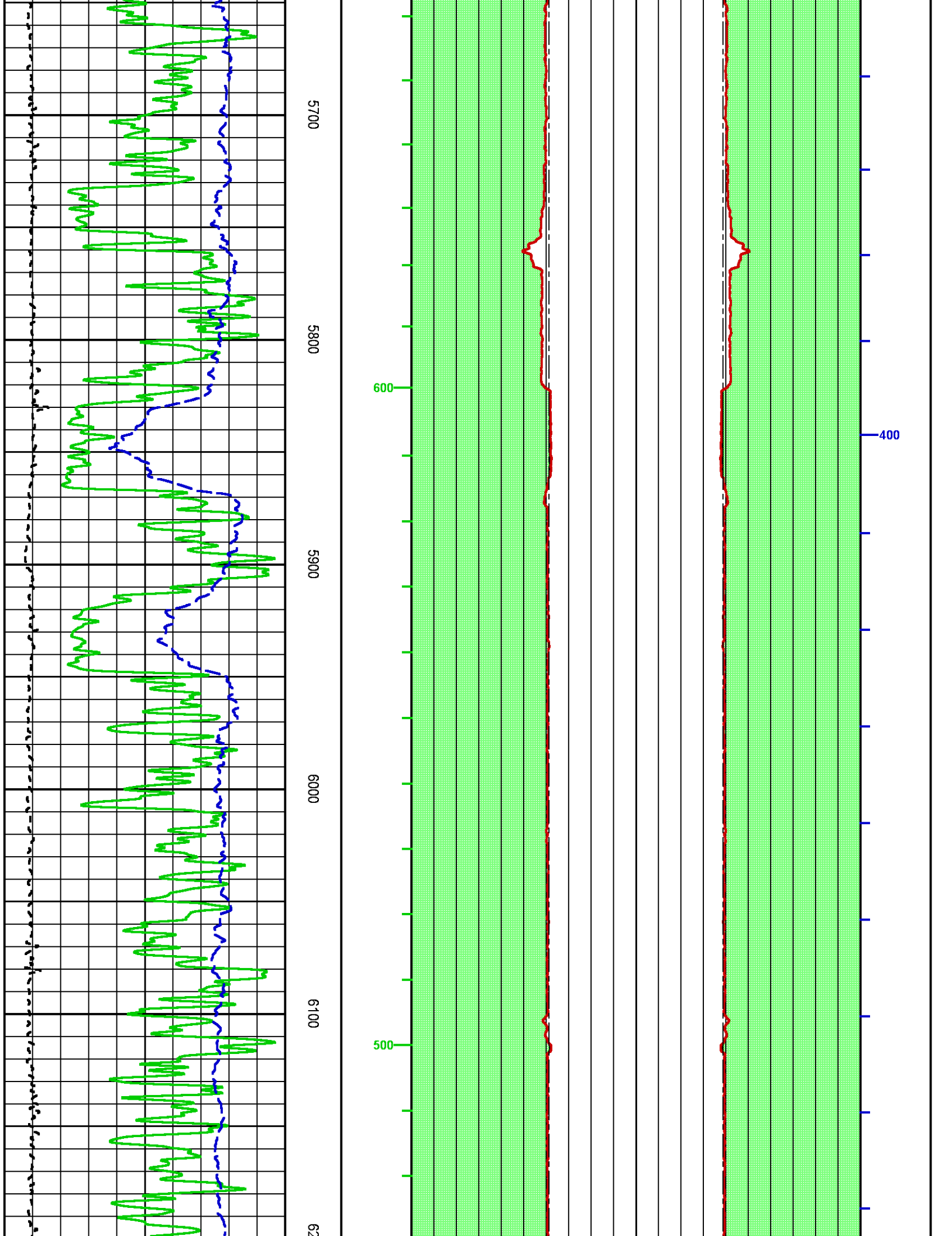


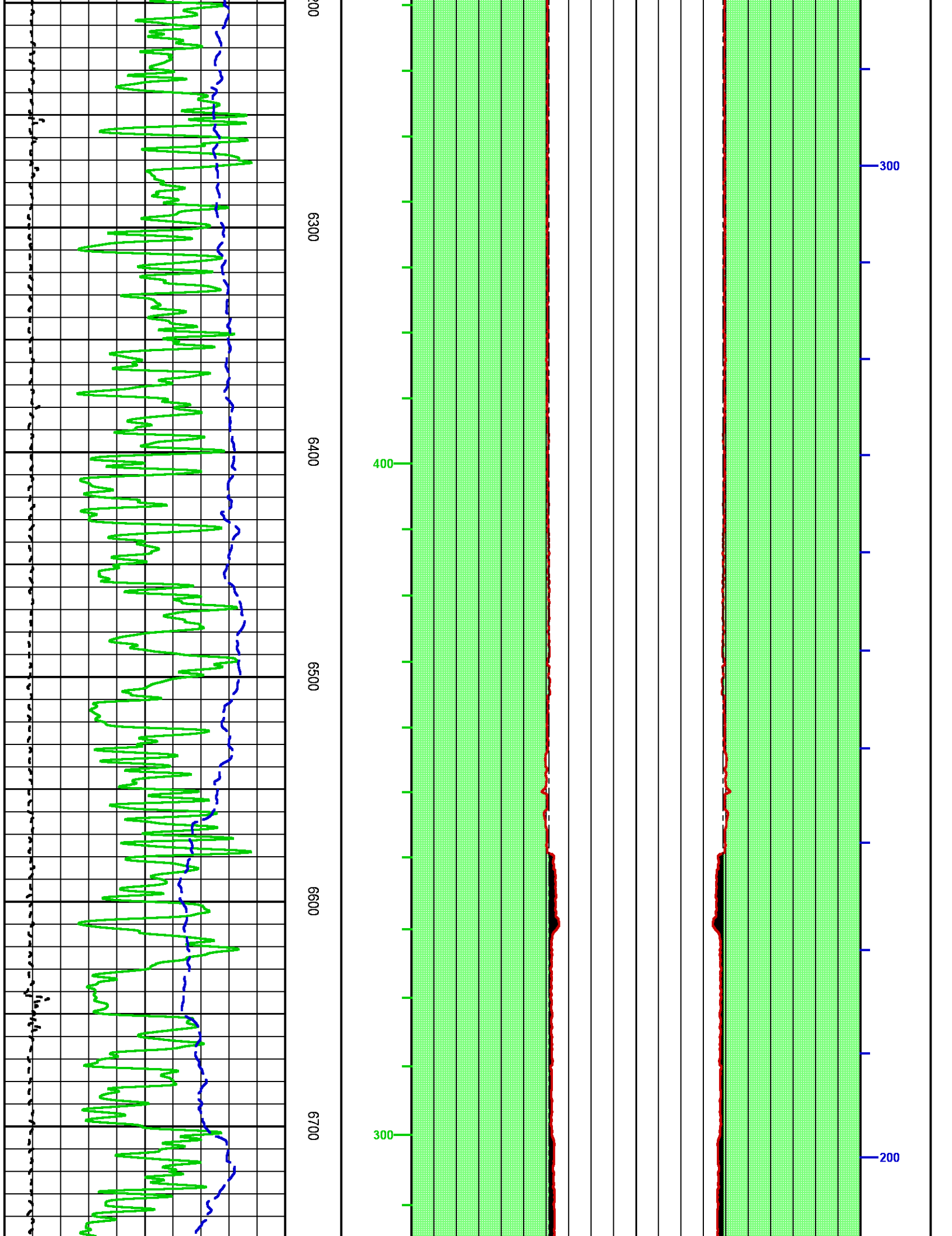


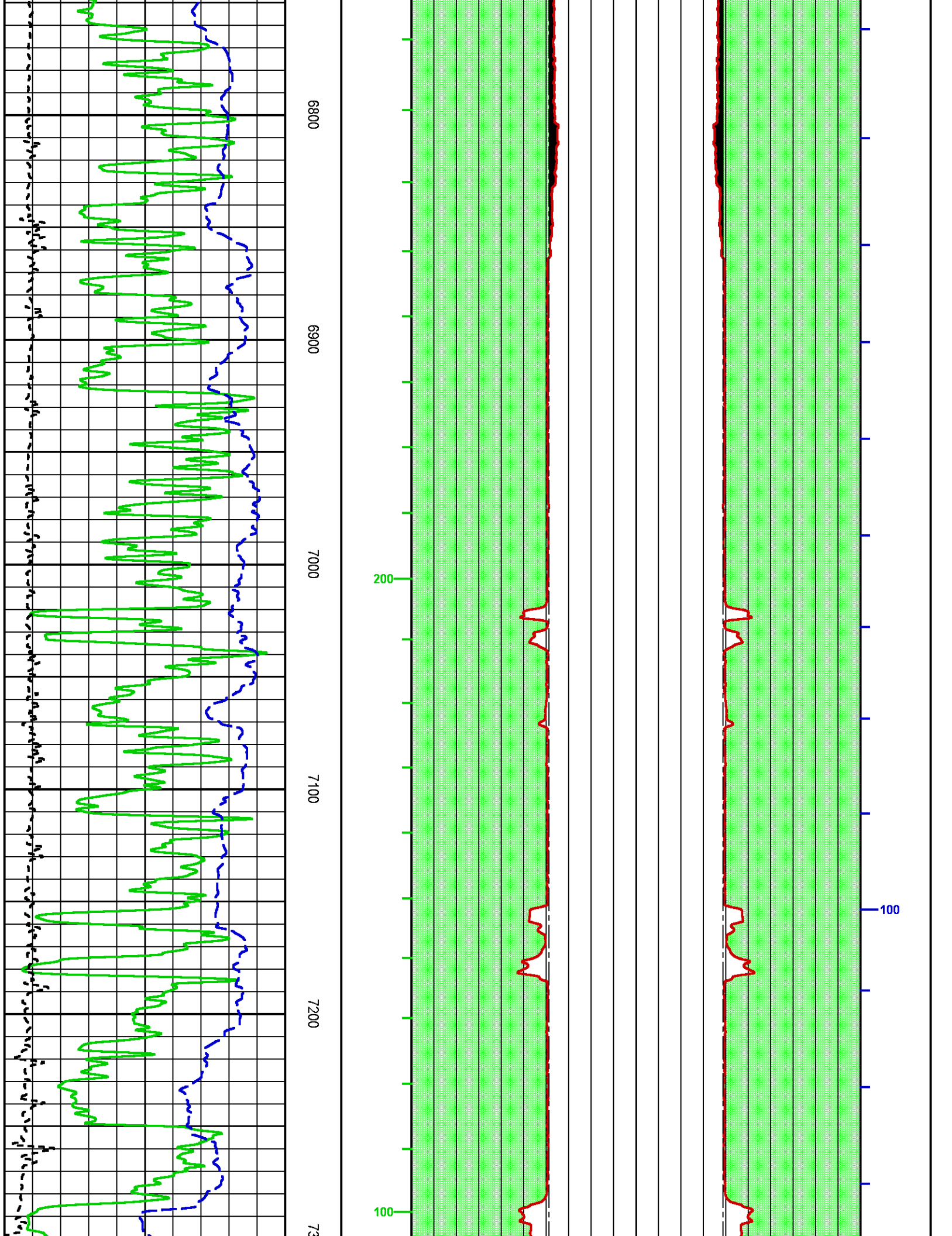


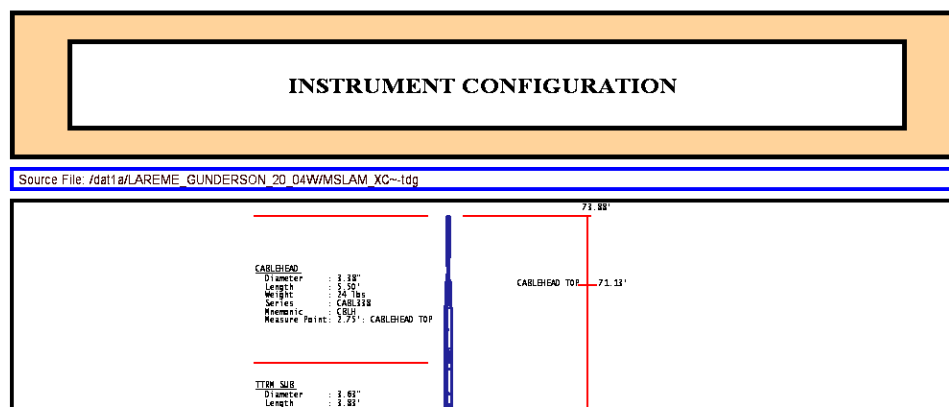
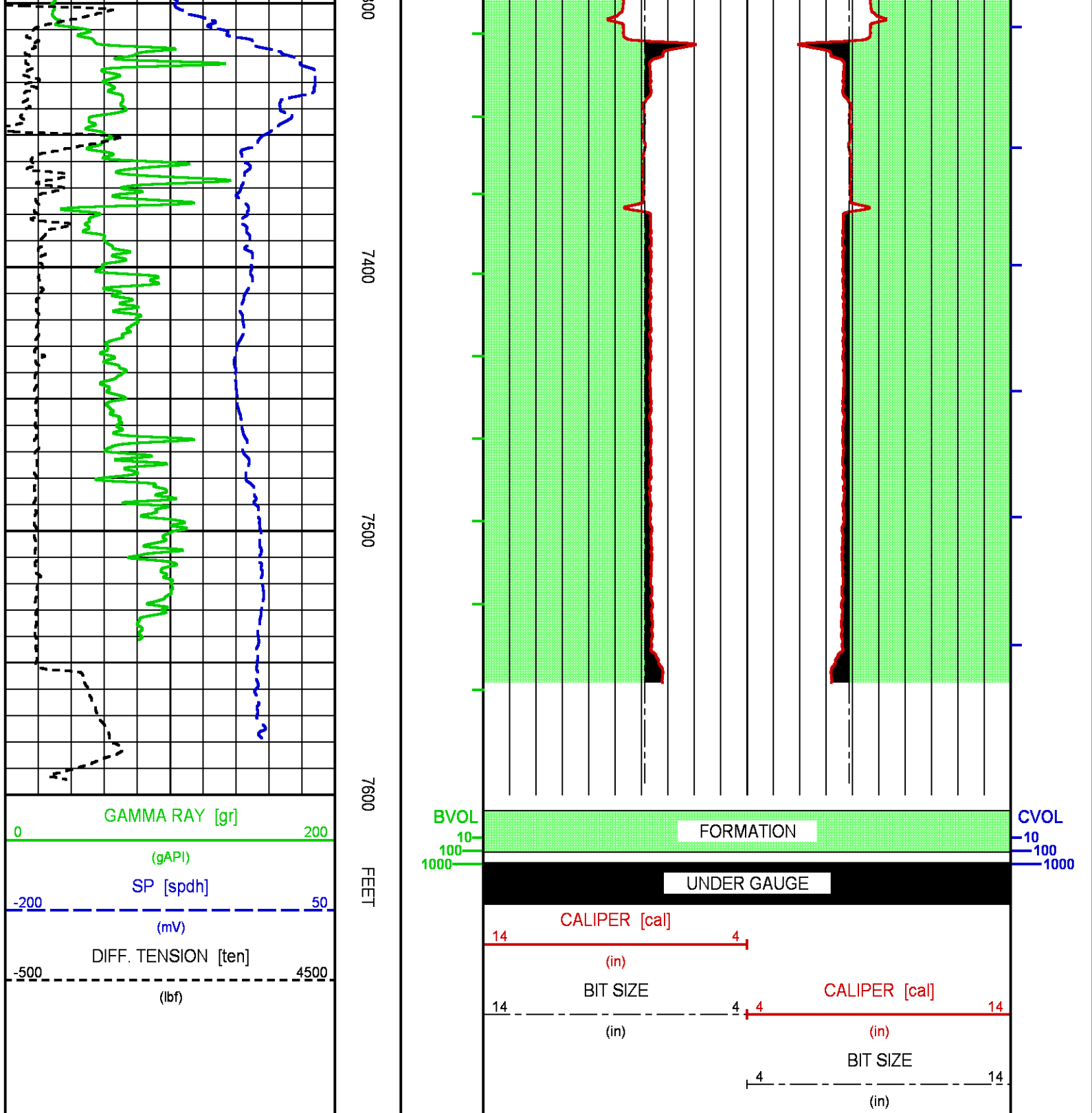


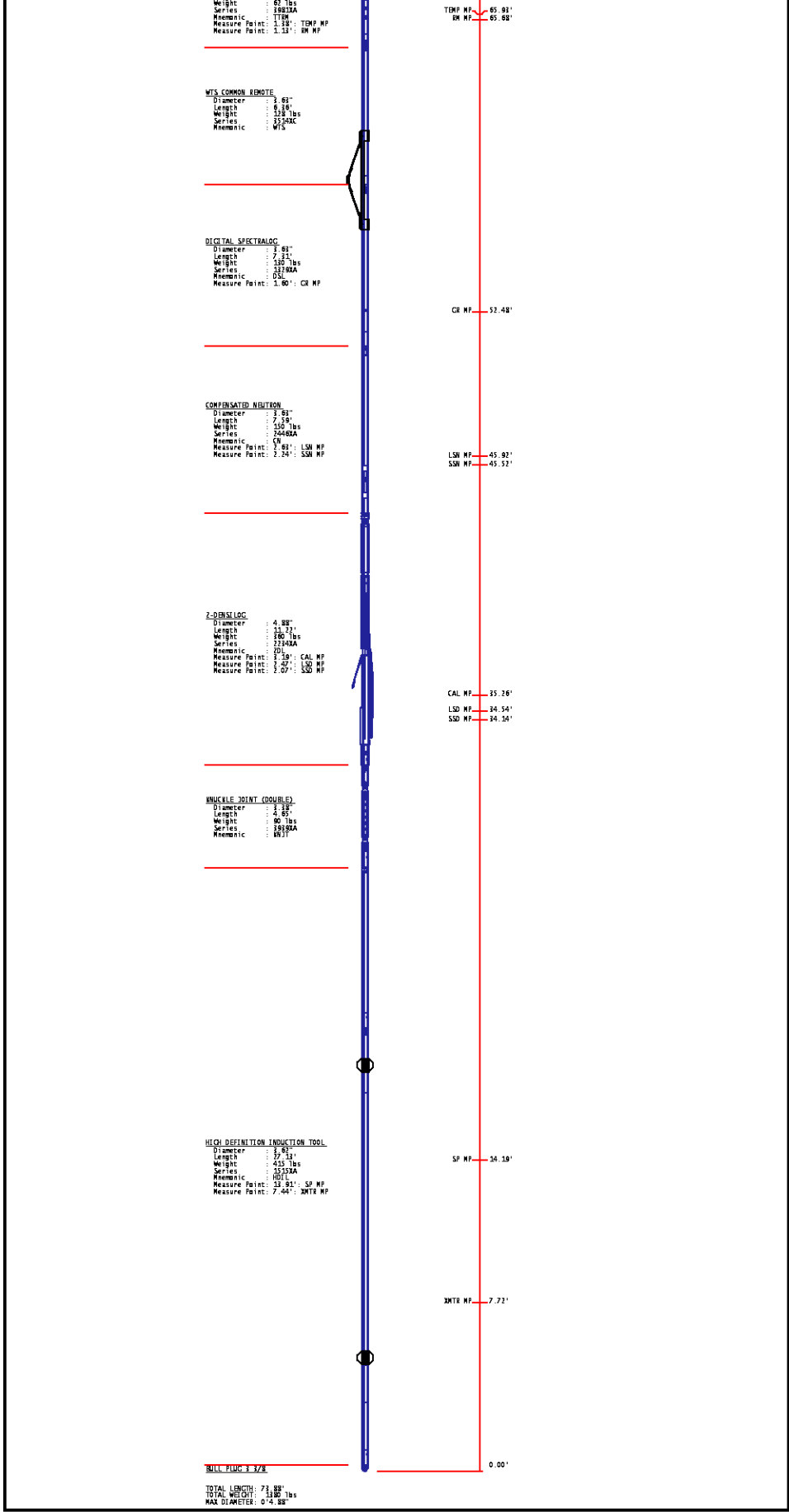












COMPANY LARAMIE ENERGY
WELL GUNDERSON 20-04W
FIELD VEGA
COUNTY MESA STATE COLORADO

FILE NO: _____
API NO: 05077103370000



LOCATION:

LAT: 39.266919N, LONG:107.795317W

SEC 29 TWP 9S RGE 93W

ELEVATIONS:

KB 7174 FT

DF 7174 FT

GL 7144 FT

DATE 21-JUN-2017