

# HALLIBURTON

iCem<sup>®</sup> Service

## **LARAMIE ENERGY LLC**

**For: Laramie**

Date: Monday, June 05, 2017

**Gunderson 20-03W Surface**

**API # 05-077-10338**

Sincerely,

**Grand Junction Cement Engineering**

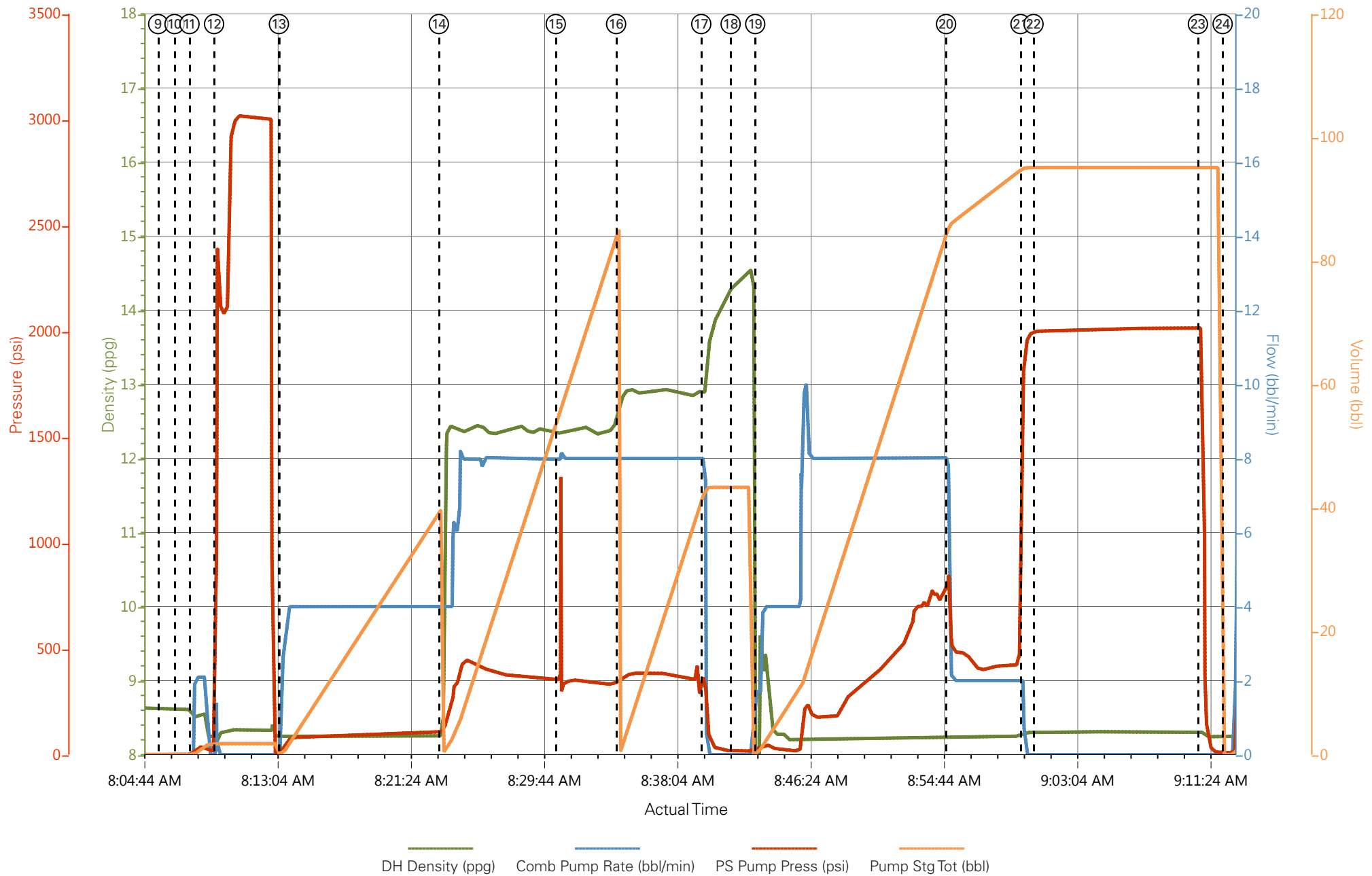
## 1.0 Real-Time Job Summary

## 1.1 Job Event Log

| Type  | Seq. No. | Graph Label                           | Date     | Time     | Source | DH Density<br>(ppg) | Comb Pump Rate<br>(bbl/min) | PS Pump Press<br>(psi) | Pump Stg Tot<br>(bbl) | Comments   |
|-------|----------|---------------------------------------|----------|----------|--------|---------------------|-----------------------------|------------------------|-----------------------|--|
| Event | 1        | Call Out                              | 6/5/2017 | 00:00:00 | USER   |                     |                             |                        |                       | REQUESTED ON LOCARION AT 07:00   |
| Event | 2        | Pre-Convoy Safety Meeting             | 6/5/2017 | 02:00:00 | USER   |                     |                             |                        |                       | ALL HES PRESENT  |
| Event | 3        | Crew Leave Yard                       | 6/5/2017 | 02:15:00 | USER   |                     |                             |                        |                       | 1 550 PU, 1 ELITE PUMP AND 1 660 BULK TRUCK  |
| Event | 4        | Arrive At Loc                         | 6/5/2017 | 03:30:00 | USER   |                     |                             |                        |                       | ARRIVED 3.5 HOURS EARLY RIG WAS RUNNING CASING   |
| Event | 5        | Assessment Of Location Safety Meeting | 6/5/2017 | 03:45:00 | USER   |                     |                             |                        |                       | MET WITH CO REP AND WENT OVER NUMBERS AND JOB PROCEDURE. DID A WALK AROUND OF LOCATION AND COLLECTED WATER SAMPLE PH 7, CHL 0, TEMP 58F. WAITED ON CASING TO SPOT TRUCKS IN              |
| Event | 6        | Pre-Rig Up Safety Meeting             | 6/5/2017 | 05:45:00 | USER   |                     |                             |                        |                       | FILLED OUT JSA AND SPOTTED TRUCKS IN.  |
| Event | 7        | Rig-Up Equipment                      | 6/5/2017 | 06:00:00 | USER   |                     |                             |                        |                       | RIGGED UP WHAT WE COULD STAYING OUT OF THE RED ZONE. COMPLETED RIG UP WHEN CASING WAS COMPLETE AT 0700   |
| Event | 8        | Pre-Job Safety Meeting                | 6/5/2017 | 07:45:00 | USER   |                     |                             |                        |                       | MET WITH RIG CREW TO GO OVER JOB. ALL HES PRESENT  |
| Event | 9        | Start Job                             | 6/5/2017 | 08:05:47 | COM5   |                     |                             |                        |                       | TD 1562', TP 1556', SJ 1512' (44') CSG 8.625" 24# J-55, OH 11" MW 9.2 PPG, TOT 629', LEAD TO SURFACE. RIG CIRCULATED AT 10.5 BBLS/MIN FOR 30 MIN AT 250 PSI BEFORE HANDING THE WELL OVER |
| Event | 10       | Drop Bottom Plug                      | 6/5/2017 | 08:06:48 | USER   |                     |                             |                        |                       | PLUG WENT  |
| Event | 11       | Prime Pumps                           | 6/5/2017 | 08:07:44 | USER   | 8.33                | 2                           | 49                     | 2                     | 2 BBLS FRESH WATER   |
| Event | 12       | Test Lines                            | 6/5/2017 | 08:09:16 | COM5   |                     |                             | 3000                   |                       | TESTED TO 3000 PSI. KO'S FUNCTIONING. TESTED WELL  |
| Event | 13       | Pump Spacer 1                         | 6/5/2017 | 08:13:20 | COM5   | 8.33                | 4                           | 100                    | 40                    | 40 BBLS FRESH WATER  |
| Event | 14       | Pump Lead Cement                      | 6/5/2017 | 08:23:20 | COM5   | 12.3                | 8                           | 400                    | 86                    | 197 SKS (86 BBLS) 12.3 PPG, 2.46 FT3/SK, 14.17 GAL/SK  |

|       |    |                             |          |          |      |      |   |      |    |  |
|-------|----|-----------------------------|----------|----------|------|------|---|------|----|--|
| Event | 15 | Bump Plug                   | 6/5/2017 | 08:30:38 | USER |      |   |      |    | BOTTOM PLUG LANDED   |
| Event | 16 | Pump Tail Cement            | 6/5/2017 | 08:34:25 | COM5 | 12.8 | 8 | 390  | 42 | 109 SKS (42 BBLS) 12.8 PPG, 2.18 FT3/SK, 12.11 GAL/SK          |
| Event | 17 | Shutdown                    | 6/5/2017 | 08:39:44 | USER |      |   |      |    | END OF CEMENT  |
| Event | 18 | Drop Top Plug               | 6/5/2017 | 08:41:34 | USER |      |   |      |    | PLUG WENT WITNESSED BY CO REP                                  |
| Event | 19 | Pump Displacement           | 6/5/2017 | 08:43:07 | COM5 | 8.33 | 8 | 820  | 96 | WASHED ON TOP OF PLUG. 96 BBLS FRESH WATER                     |
| Event | 20 | Slow Rate                   | 6/5/2017 | 08:55:03 | USER | 8.33 | 2 | 480  | 86 | SLOWED TO 2 BBLS/MIN TO LAND THE PLUG                          |
| Event | 21 | Bump Plug                   | 6/5/2017 | 08:59:42 | COM5 |      |   | 520  |    | LANDED AT 520 AND WENT TO 2000 FOR CASING TEST                 |
| Event | 22 | Test Casing                 | 6/5/2017 | 09:00:31 | USER |      |   | 2000 |    | TESTED AT 2000 PSI FOR 10 MIN                                  |
| Event | 23 | Slow Rate                   | 6/5/2017 | 09:10:47 | USER |      |   | 2020 |    | FLOATS HELD. 1 BBL BACK TO TRUCK                               |
| Event | 24 | End Job                     | 6/5/2017 | 09:12:20 | COM5 |      |   |      |    | GREAT RETURNS THROUGHOUT JOB. 26 BBLS OF LEAD TO SURFACE       |
| Event | 25 | Pre-Rig Down Safety Meeting | 6/5/2017 | 09:15:00 | USER |      |   |      |    | ALL HES PRESENT  |
| Event | 26 | Rig Down Lines              | 6/5/2017 | 09:25:00 | USER |      |   |      |    |  |
| Event | 27 | Pre-Convoy Safety Meeting   | 6/5/2017 | 10:00:00 | USER |      |   |      |    | ALL HES PRESENT  |
| Event | 28 | Crew Leave Location         | 6/5/2017 | 10:15:00 | USER |      |   |      |    | THANK YOU FOR USING HALLIBURTON CEMENT.. CLIFF SPARKS AND CREW |

# LARAMIE GUNDERSON 20-03W 8.625" SURFACE



⑨ Start Job   ⑩ Drop Bottom Plug   ⑪ Prime Pumps   ⑫ Test Lines   ⑬ Pump Spacer 1   ⑭ Pump Lead Cement   ⑮ Bump Plug   ⑯ Pump Tail Cement   ⑰ Shutdown   ⑱ Drop Top Plug   ⑲ Pump Dis

▼ **HALLIBURTON** | iCem® Service

Created: 2017-06-05 07:09:45, Version: 4.2.393

Edit

Customer : LARAMIE ENERGY II LLC

Job Date : 6/5/2017 7:23:34 AM

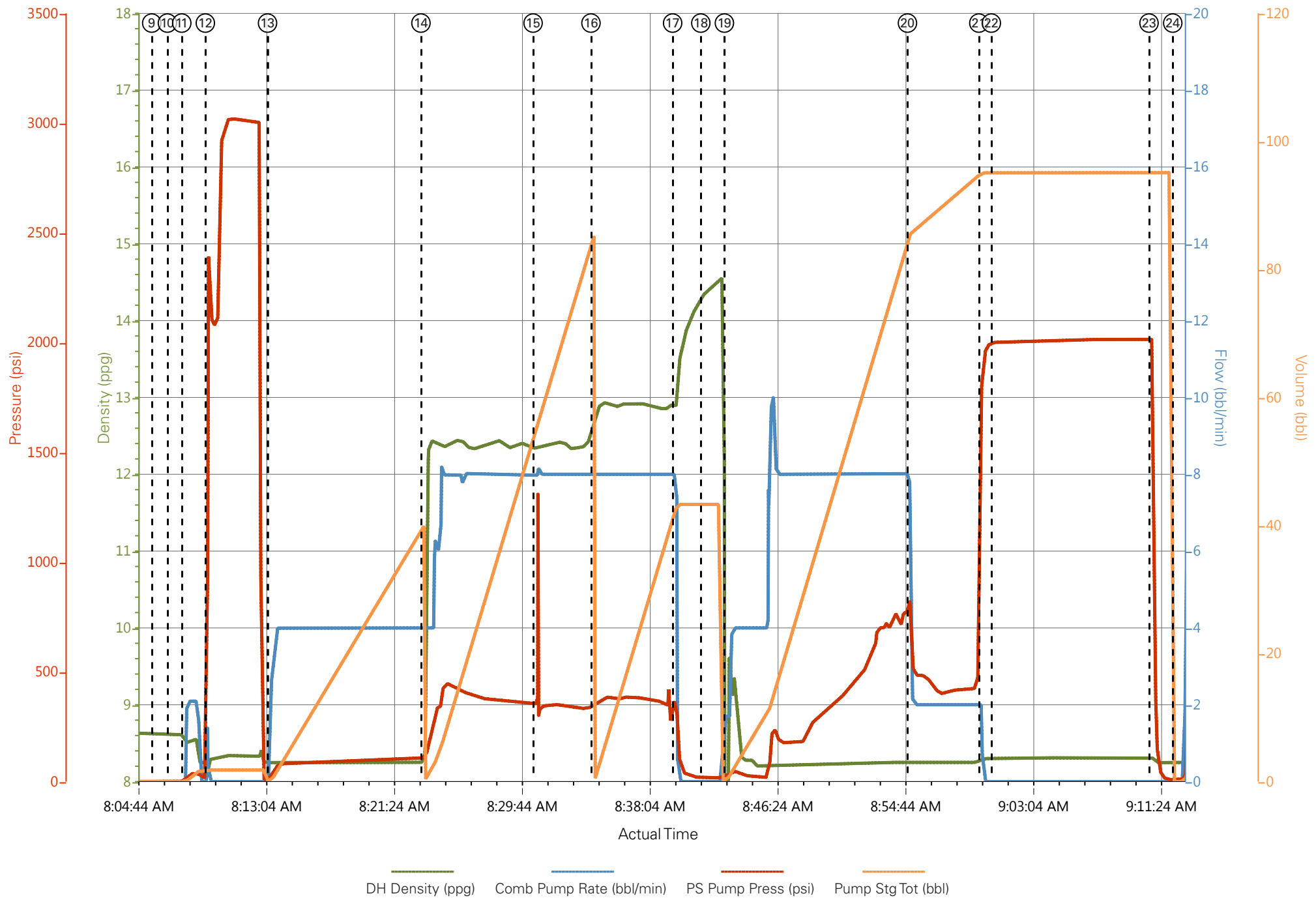
Well : 20-03W

Representative : TYLER HALE

Sales Order # : 904075667

ELITE 1 : CLIFF SPARKS / TRAVIS BROWN

# LARAMIE GUNDERSON 20-03W 8.625" SURFACE



# HALLIBURTON

iCem<sup>®</sup> Service

## **LARAMIE ENERGY II LLC**

**For: Laramie**

Date: Friday, June 09, 2017

**GUNDERSON 20-03W Production**

API# 05-077-10338

Sincerely,

**Grand Junction Cement Engineering**

## 2.0 Real-Time Job Summary

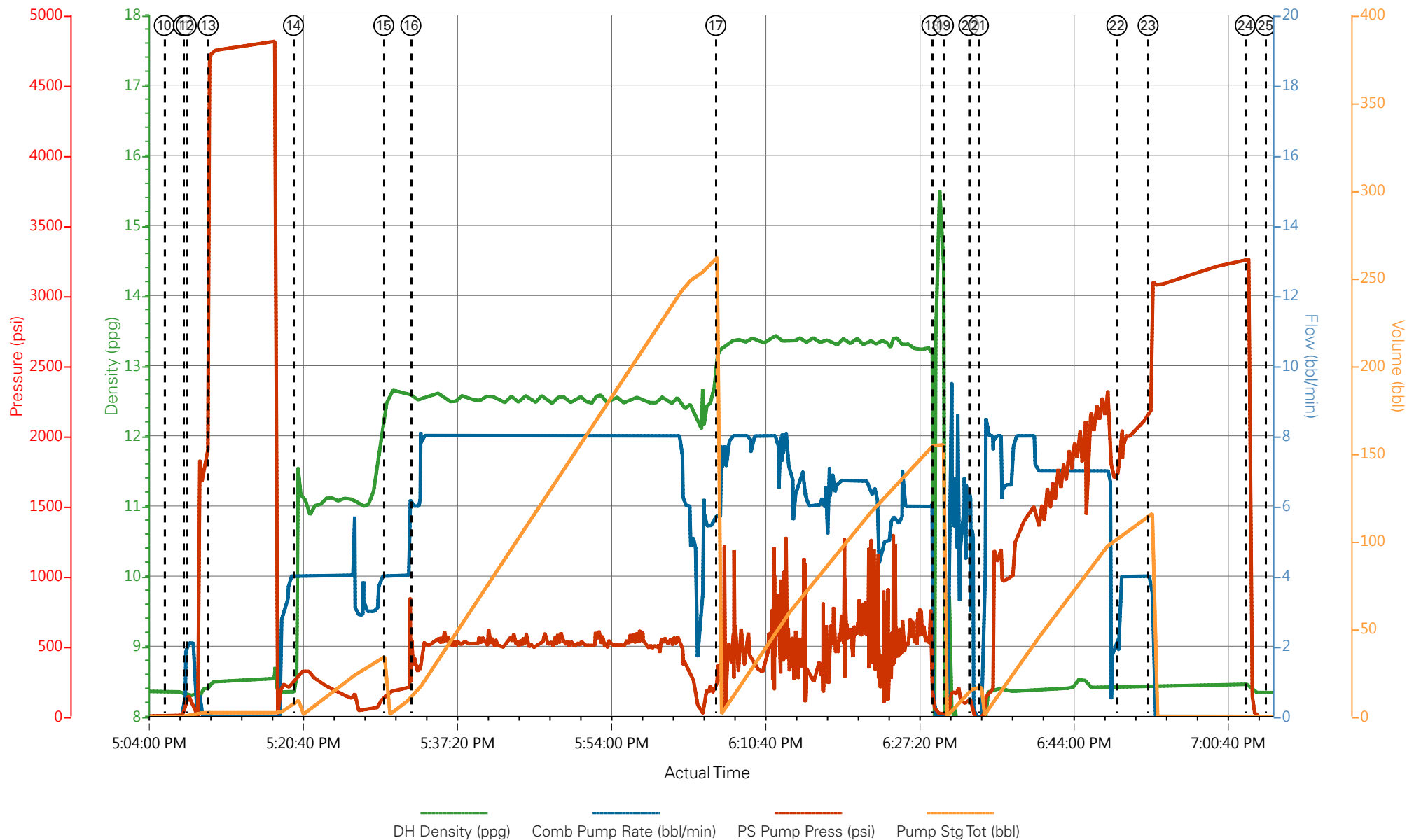
## 2.1 Job Event Log

| Type  | Seq. No. | Graph Label                              | Date     | Time     | Source | DH Density<br>(ppg) | Comb Pump Rate<br>(bbl/min) | PS Pump Press<br>(psi) | Pump Stg Tot<br>(bbl) | Comments   |
|-------|----------|--|----------|----------|--------|---------------------|-----------------------------|------------------------|-----------------------|--|
| Event | 1        | Call Out                                 | 6/9/2017 | 06:30:00 | USER   |                     |                             |                        |                       | ON LOCATION 12:00  |
| Event | 2        | Pre-Convoy Safety Meeting                | 6/9/2017 | 09:15:00 | USER   |                     |                             |                        |                       | ALL HES PRESENT  |
| Event | 3        | Depart from Service Center or Other Site | 6/9/2017 | 09:30:00 | USER   |                     |                             |                        |                       | 1-ELITE, 1-660 BULK TRAILER, 1-450 PICK UP   |
| Event | 4        | Arrive At Loc                            | 6/9/2017 | 11:00:00 | USER   |                     |                             |                        |                       | RIG RUNNING CASING   |
| Event | 5        | Assessment Of Location Safety Meeting    | 6/9/2017 | 11:15:00 | USER   |                     |                             |                        |                       | MET WITH COMPANY REP DISCUSSED PROCEDURE AND OFFERED SDS   |
| Event | 6        | Pre-Rig Up Safety Meeting                | 6/9/2017 | 11:45:00 | USER   |                     |                             |                        |                       | ALL HES PRESENT  |
| Event | 7        | Rig-Up Completed                         | 6/9/2017 | 14:00:00 | USER   |                     |                             |                        |                       | 1-ELITE, 1-660 BULK TRAILER, 2- FIELD SILO, 4" SUCTION HOSE, 2" PUMP IRON, 4.5" QUICK LATCH PLUG CONTAINER     |
| Event | 8        | Pre-Job Safety Meeting                   | 6/9/2017 | 15:35:00 | USER   |                     |                             |                        |                       | ALL HES AND RIG CREW PRESENT   |
| Event | 9        | Other                                    | 6/9/2017 | 17:00:00 | USER   |                     |                             |                        |                       | RIG CIRCULATED 2 HOURS 8 BPM 880 PSI , WATER: PH-7, CL-0, TEMP-59  |
| Event | 10       | Start Job                                | 6/9/2017 | 17:06:00 | USER   | 8.35                | 0.00                        | 1.00                   | 0.0                   | TD-7600', TP-7596' SET @ 7590, SJ-83', CSG-4.5" 11.6# L80, SCSG-8.625" 24# SHOE @ 1530', OH-7.875", MUD-9.5PPG |
| Event | 11       | Prime Pumps                              | 6/9/2017 | 17:08:03 | USER   | 8.31                | 2.00                        | 166.00                 | 2.0                   | FRESH WATER  |
| Event | 12       | Drop Bottom Plug                         | 6/9/2017 | 17:08:22 | USER   | 8.28                | 2.10                        | 140.00                 | 1.0                   | PLUG AWAY  |
| Event | 13       | Test Lines                               | 6/9/2017 | 17:10:44 | COM5   | 8.49                | 0.00                        | 4735.00                | 2.1                   | ALL PRESSURE HELD ON LINES   |
| Event | 14       | Pump Tuned Spacer                        | 6/9/2017 | 17:19:57 | COM5   | 11.00               | 4.00                        | 301.00                 | 40.0                  | TUNED SPACER III, 40 BBLS, 11.0PPG, 40.86CF/SK, 31.9GAL/SK   |

|       |    |                             |          |          |      |       |      |         |       |   |
|-------|----|-----------------------------|----------|----------|------|-------|------|---------|-------|---|
| Event | 15 | Pump Lead Cement            | 6/9/2017 | 17:29:43 | COM5 | 12.50 | 8.00 | 620.00  | 268.1 | NEOCER LEAD CEMENT 776SKS, 12.5PPG, 1.94CF/SK, 9.6GAL/SK      |
| Event | 16 | Check weight                | 6/9/2017 | 17:32:39 | COM5 |       |      |         |       | WEIGHT VERIFIED BY PRESSURIZED MUD SCALES                     |
| Event | 17 | Pump Tail Cement            | 6/9/2017 | 18:05:38 | COM5 | 13.30 | 7.00 | 706.00  | 131.6 | THERMACER TAIL CEMENT 427SKS, 13.3PPG, 1.73CF/SK, 7.81GAL/SK  |
| Event | 18 | Shutdown                    | 6/9/2017 | 18:29:00 | USER |       |      |         |       | END OF CEMENT   |
| Event | 19 | Clean Lines                 | 6/9/2017 | 18:30:15 | COM5 |       |      |         |       | CLEANED PUMPS AND LINES INTO CELLAR                           |
| Event | 20 | Drop Top Plug               | 6/9/2017 | 18:33:00 | USER |       |      |         |       | PLUG DROP WITNESSED BY COMPANY REP                            |
| Event | 21 | Pump Displacement           | 6/9/2017 | 18:34:02 | COM5 | 8.35  | 8.00 | 2200.00 | 106.5 | FRESH WATER WITH 5 GAL CLAWEB, 1GAL MMCR                      |
| Event | 22 | Slow Rate                   | 6/9/2017 | 18:49:00 | USER | 8.40  | 4.00 | 1964.00 | 10.0  | SLOW RATE LAST 10 BBLs  |
| Event | 23 | Bump Plug                   | 6/9/2017 | 18:52:22 | COM5 | 8.42  | 4.00 | 2165.00 | 116.5 | PLUG BUMPED 2165PSI   |
| Event | 24 | Check Floats                | 6/9/2017 | 19:02:52 | USER | 8.46  | 0.00 | 3262.00 | 0.0   | FLOATS HELD 1.5 BBLs BACK TO DISPLACEMENT TANK                |
| Event | 25 | End Job                     | 6/9/2017 | 19:05:04 | COM5 |       |      |         |       | GOOD RETURNS THROUGH OUT JOB, 10 BBLs TUNED SPACER TO SURFACE |
| Event | 26 | Pre-Rig Down Safety Meeting | 6/9/2017 | 19:07:00 | USER |       |      |         |       | ALL HES PRESENT   |
| Event | 27 | Rig-Down Completed          | 6/9/2017 | 20:20:00 | USER |       |      |         |       | RIG DOWN COMPLETED SAFELY                                     |
| Event | 28 | Pre-Convoy Safety Meeting   | 6/9/2017 | 20:30:00 | USER |       |      |         |       | ALL HES PRESENT   |
| Event | 29 | Crew Leave Location         | 6/9/2017 | 21:00:00 | USER |       |      |         |       | THANK YOU FOR CHOOSING HALLIBURTON, ANDREW BRENNECKE AND CREW |



# LARAMIE - GUNDERSON 20-03W - 4.5" PRODUCTION



- |  |   |                                       |                                   |          |
|--|---|---------------------------------------|-----------------------------------|----------|
| ① Call Out n/a;n/a;n/a;n/a                                 | ④ Arrive At Loc n/a;n/a;n/a;n/a                         | ⑦ Rig-Up Completed 8.53;0;1;19.5      | ⑩ Start Job 8.35;0;1;0            | ⑬ Test L |
| ② Pre-Convoy Safety Meeting n/a;n/a;n/a;n/a                | ⑤ Assessment Of Location Safety Meeting n/a;n/a;n/a;n/a | ⑧ Pre-Job Safety Meeting 8.5;0;3;19.5 | ⑪ Prime Pumps 8.31;2.1;166;0.3    | ⑭ Pump   |
| ③ Depart from Service Center or Other Site n/a;n/a;n/a;n/a | ⑥ Pre-Rig Up Safety Meeting n/a;n/a;n/a;n/a             | ⑨ Other 8.35;0;1;0                    | ⑫ Drop Bottom Plug 8.28;2.1;140;1 | ⑮ Pump   |



▼ **HALLIBURTON** | iCem® Service

Created: 2017-06-09 13:24:27, Version: 4.2.393

Edit

Customer : LARAMIE ENERGY II LLC

Job Date : 6/9/2017 1:43:11 PM

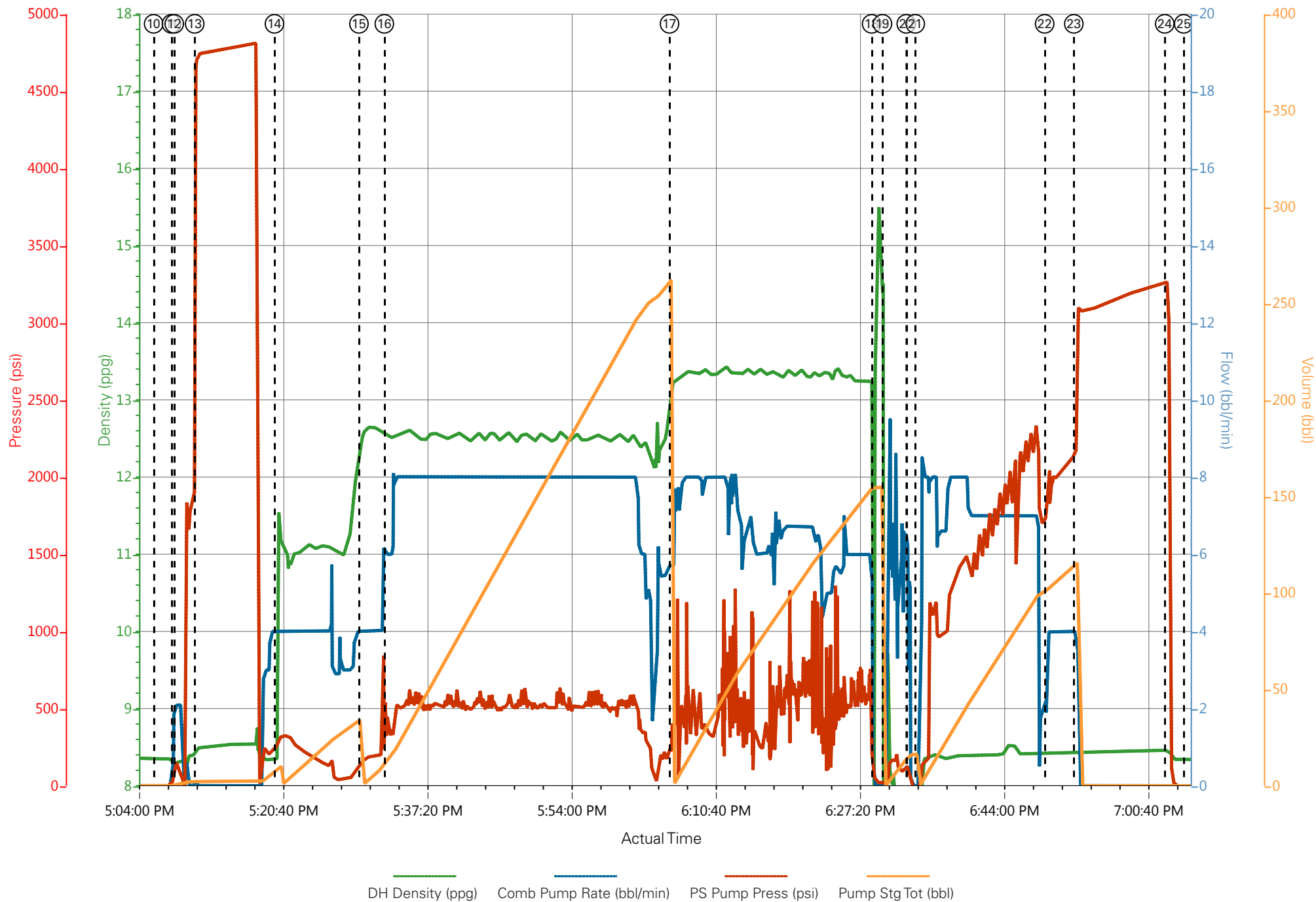
Well : GUNDERSON 20-03W

Representative : SHANE HEARD

Sales Order # : 904081375

ELITE 1 : A.BRENNECKE/A.ANGELO

# LARAMIE - GUNDERSON 20-03W - 4.5" PRODUCTION



### Job Information

|                |                |          |                   |            |                      |
|----------------|----------------|----------|-------------------|------------|----------------------|
| Request/Slurry | 2392074/1      | Rig Name | H&P 522           | Date       | 04/JUN/2017          |
| Submitted By   | Aaron Woolsey  | Job Type | Production Casing | Bulk Plant | Grand Junction       |
| Customer       | Laramie Energy | Location | Garfield          | Well       | Gunderson BCU 20-03W |

### Well Information

|                   |          |           |         |      |               |
|-------------------|----------|-----------|---------|------|---------------|
| Casing/Liner Size | 4.5 in   | Depth MD  | 7611 ft | BHST | 113°C / 235°F |
| Hole Size         | 7.875 in | Depth TVD | 7554 ft | BHCT | 76°C / 168°F  |
| Pressure          | 4588 psi |           |         |      |               |

### Cement Information - Lead Design

| Conc | UOM | Cement/Additive | Sample Type | Sample Date | Lot No. | Cement Properties |                        |          |
|------|-----|-----------------|-------------|-------------|---------|-------------------|------------------------|----------|
|      |     | NeoCem™ Cement  |             |             |         | Slurry Density    | 12.5                   | lbm/gal  |
|      |     |                 |             |             |         | Slurry Yield      | 1.941                  | ft3/sack |
|      |     |                 |             |             |         | Water Requirement | 9.623                  | gal/sack |
|      |     |                 |             |             |         | Total Mix Fluid   | 9.623                  | gal/sack |
|      |     |                 |             |             |         | Water Source      | Field (Fresh)<br>Water |          |
|      |     |                 |             |             |         | Water Chloride    |                        |          |

### Operation Test Results Request ID 2392074/1

| Thickening Time - ON-OFF-ON, Request Test ID:34599351 |                |                  |                |                |                |                 |          |                             | 07/JUN/2017         |                   |
|---|----------------|------------------|----------------|----------------|----------------|-----------------|----------|-----------------------------|---------------------|-------------------|
| Test Temp (°F)  | Pressure (psi) | Reached in (min) | 30 Bc (hh:min) | 50 Bc (hh:min) | 70 Bc (hh:min) | 100 Bc (hh:min) | Start Bc | Stirring before stop (mins) | Static Period (min) | Peak reading (BC) |
| 168   | 4588           | 39               | 3:07           | 3:57           | 4:25           | 4:55            | 13       | 49                          | 15                  | 16                |

These are draft results and have not been approved for final use.

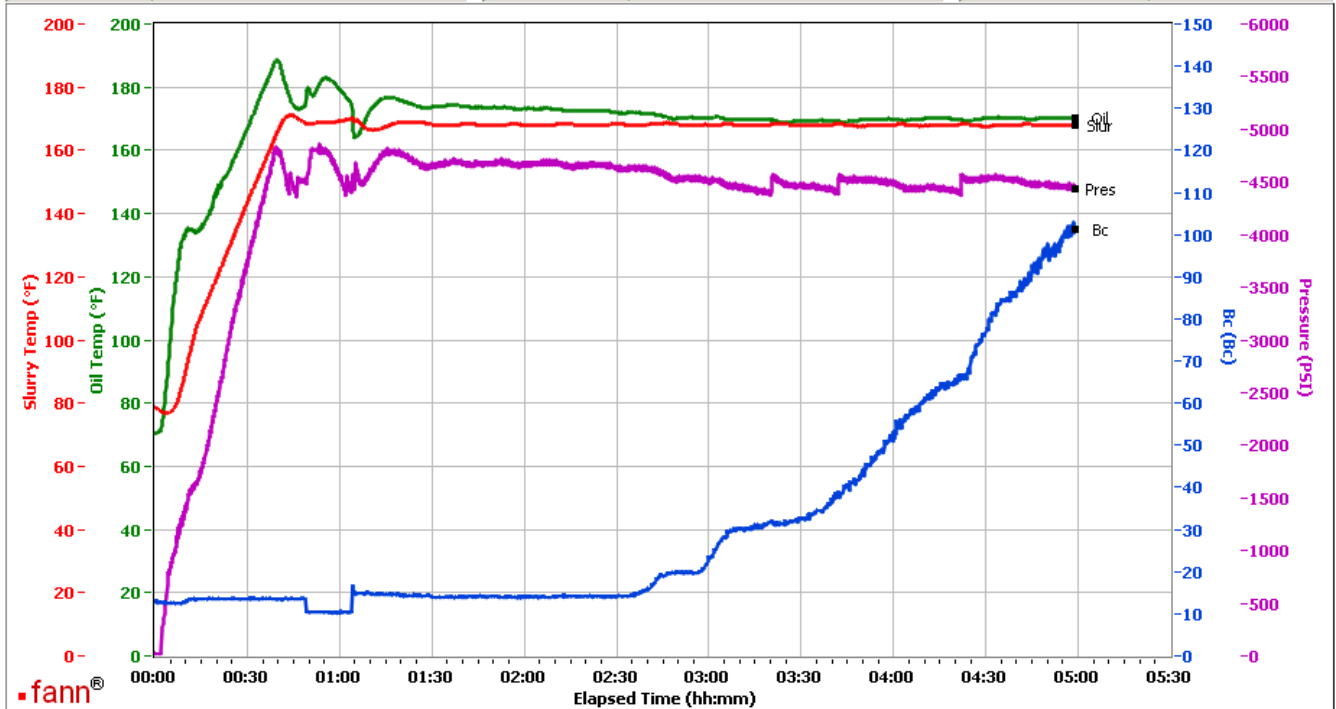
This report is the property of Halliburton Energy Services and neither it nor any part thereof, nor a copy thereof, is to be published or disclosed without first securing the expressed written approval of Halliburton. It may however be used in the course of regular business operations by any person or concern receiving such report from Halliburton. This report is for information purposes only and the content is limited to the sample described. Halliburton makes no warranties, expressed or implied, as to the accuracy of the contents or results. Any user of this report agrees Halliburton shall not be liable for any loss or damage regardless of cause, including any act or omission of Halliburton, resulting from the use hereof.

## Grand Junction Colorado

| Fields            | Values                                 |
|-------------------|--|
| Project Name      | 2392074-1 LARAMIE ENERGY 12.5 PPG BULK |
| Test ID           | 2392074-1 TT                           |
| Request ID        | 2392074-1                              |
| Tested by         | CT                                     |
| Customer          | LARAMIE ENERGY                         |
| Well No           | GUNDERSON BCU 20-03W                   |
| Rig               | H&P 522                                |
| Casing/Liner Size | 4.5 INCH                               |

| Fields         | Values            |
|----------------|-------------------|
| Job Type       | PRODUCTION CASING |
| Cement Type    | TYPE I-II         |
| Cement Weight  | Standard          |
| Test Date      | 06/06/17          |
| Test Time      | 07:23 PM          |
| Temp. Units    | degF              |
| Pressure Units | PSI               |
| SW Version     | 2.1.0.507         |

| Events    | Results |
|-----------|---------|
| 30.00 Bc  | 03h:07m |
| 40.00 Bc  | 03h:44m |
| 50.00 Bc  | 03h:57m |
| 70.00 Bc  | 04h:25m |
| 100.00 Bc | 04h:55m |
| 00h:30m   | 13.79   |
| 01h:00m   | 10.49   |
| 01h:30m   | 13.95   |



Data File C:\Documents and Settings\M290\Local Settings\Temporary Internet Files\Content.IE5\0HU9OBIZ\GJ2392074-1 LARAMIE ENERGY BULK PRODUCTION LEAD TT[1].tdms

Comments OPERATION COMPOSITE TT - CS1384, TRAILER 8678, 388 SKS - CS1386, TRAILER 1656, 388 SKS

Total sks = 776

Composite:

CS1384, Trailer 8678, 388 sks

CS1386, Trailer 1656, 388 sks

Deflected 10-- > 16

**These are draft results and have not been approved for final use.**

This report is the property of Halliburton Energy Services and neither it nor any part thereof, nor a copy thereof, is to be published or disclosed without first securing the expressed written approval of Halliburton. It may however be used in the course of regular business operations by any person or concern receiving such report from Halliburton. This report is for information purposes only and the content is limited to the sample described. Halliburton makes no warranties, expressed or implied, as to the accuracy of the contents or results. Any user of this report agrees Halliburton shall not be liable for any loss or damage regardless of cause, including any act or omission of Halliburton, resulting from the use hereof.

## Job Information

|                |                |          |                   |            |                      |
|----------------|----------------|----------|-------------------|------------|----------------------|
| Request/Slurry | 2392075/1      | Rig Name | H&P 522           | Date       | 04/JUN/2017          |
| Submitted By   | Aaron Woolsey  | Job Type | Production Casing | Bulk Plant | Grand Junction       |
| Customer       | Laramie Energy | Location | Garfield          | Well       | Gunderson BCU 20-03W |

## Well Information

|                   |          |           |         |      |               |
|-------------------|----------|-----------|---------|------|---------------|
| Casing/Liner Size | 4.5 in   | Depth MD  | 7611 ft | BHST | 113°C / 235°F |
| Hole Size         | 7.875 in | Depth TVD | 7554 ft | BHCT | 76°C / 168°F  |
| Pressure          | 4588 psi |           |         |      |               |

## Drilling Fluid Information

|                   |        |                |            |         |             |
|-------------------|--------|----------------|------------|---------|-------------|
| Mud Supplier Name | Baroid | Mud Trade Name | BARADRIL-N | Density | 9.9 lbm/gal |
|-------------------|--------|----------------|------------|---------|-------------|

## Cement Information - Tail Design

| Conc | UOM | Cement/Additive | Sample Type | Sample Date | Lot No. | Cement Properties |                        |          |
|------|-----|-----------------|-------------|-------------|---------|-------------------|------------------------|----------|
|      |     | ThermaCem       |             |             |         | Slurry Density    | 13.3                   | lbm/gal  |
|      |     |                 |             |             |         | Slurry Yield      | 1.733                  | ft3/sack |
|      |     |                 |             |             |         | Water Requirement | 7.799                  | gal/sack |
|      |     |                 |             |             |         | Total Mix Fluid   | 7.799                  | gal/sack |
|      |     |                 |             |             |         | Water Source      | Field (Fresh)<br>Water |          |
|      |     |                 |             |             |         | Water Chloride    |                        |          |

## Operation Test Results Request ID 2392075/1

## Thickening Time - ON-OFF-ON, Request Test ID:34599353

07/JUN/2017

| Test Temp (°F) | Pressure (psi) | Reached in (min) | 30 Bc (hh:min) | 50 Bc (hh:min) | 70 Bc (hh:min) | 100 Bc (hh:min) | Start Bc | Stirring before stop (mins) | Static Period (min) | Peak reading (BC) |
|----------------|----------------|------------------|----------------|----------------|----------------|-----------------|----------|-----------------------------|---------------------|-------------------|
| 168            | 4588           | 39               | 2:52           | 3:01           | 3:12           | 3:33            | 21       | 49                          | 15                  | 16                |

These are draft results and have not been approved for final use.

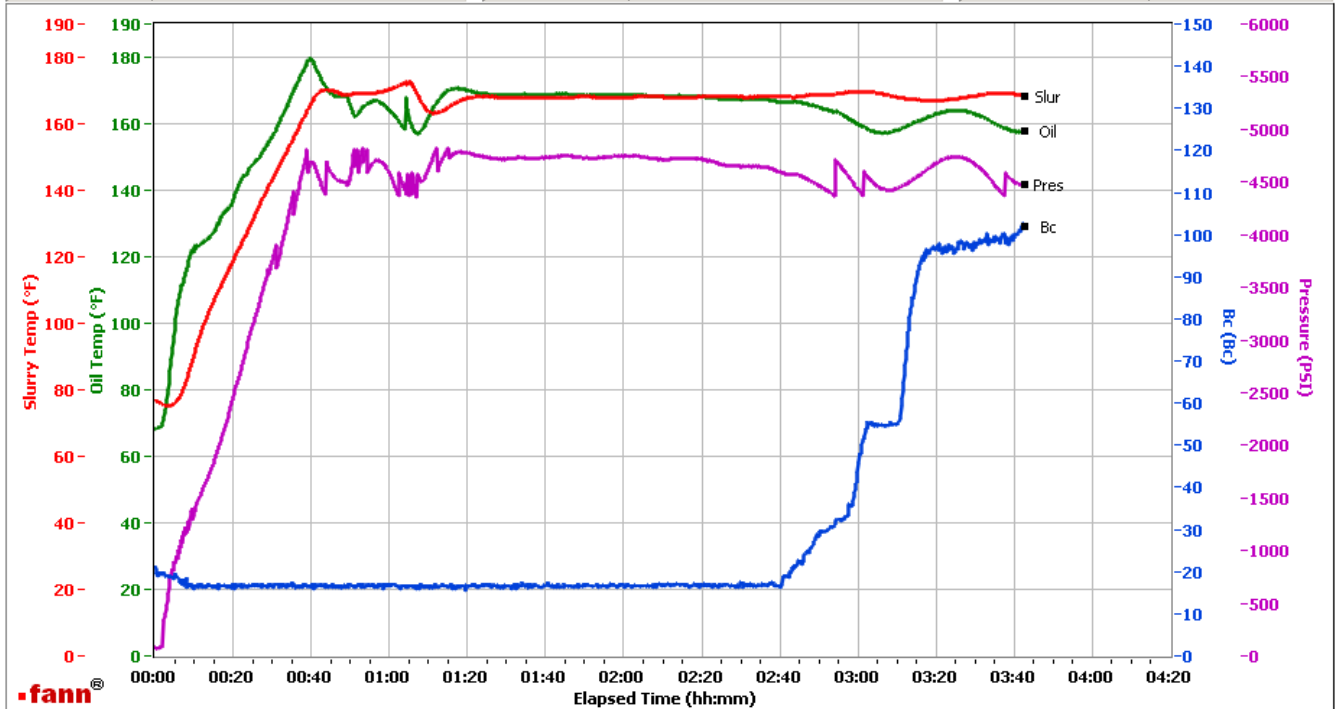
This report is the property of Halliburton Energy Services and neither it nor any part thereof, nor a copy thereof, is to be published or disclosed without first securing the expressed written approval of Halliburton. It may however be used in the course of regular business operations by any person or concern receiving such report from Halliburton. This report is for information purposes only and the content is limited to the sample described. Halliburton makes no warranties, expressed or implied, as to the accuracy of the contents or results. Any user of this report agrees Halliburton shall not be liable for any loss or damage regardless of cause, including any act or omission of Halliburton, resulting from the use hereof.

## Grand Junction Colorado

| Fields            | Values                                 |
|-------------------|--|
| Project Name      | 2392075-1 LARAMIE ENERGY 13.3 PPG BULK |
| Test ID           | 2392075-1 TT                           |
| Request ID        | 2392075-1                              |
| Tested by         | CT                                     |
| Customer          | LARAMIE ENERGY                         |
| Well No           | GUNDERSON BCU 20-03W                   |
| Rig               | H&P 522                                |
| Casing/Liner Size | 4.5 INCH                               |

| Fields         | Values            |
|----------------|-------------------|
| Job Type       | PRODUCTION CASING |
| Cement Type    | MOUNTAIN G        |
| Cement Weight  | Standard          |
| Test Date      | 07/14/10          |
| Test Time      | 05:50 PM          |
| Temp. Units    | degF              |
| Pressure Units | PSI               |
| SW Version     | 2.1.0.1219        |

| Events    | Results |
|-----------|---------|
| 30.00 Bc  | 02h:52m |
| 40.00 Bc  | 02h:59m |
| 50.00 Bc  | 03h:01m |
| 70.00 Bc  | 03h:12m |
| 100.00 Bc | 03h:33m |
| 00h:30m   | 16.77   |
| 01h:00m   | 17.07   |
| 01h:30m   | 16.78   |



Data File C:\Documents and Settings\HPHT\Desktop\Test Data\GJ2392075-1 LARAMIE ENERGY BULK PRODUCTION TAIL TT.tdms

Comments OPERATION TT - CS1385, TRAILER MT613, 427 SKS

Total sks = 427  
CS1385, Trailer MT613, 427 sks  
No deflection

**These are draft results and have not been approved for final use.**

This report is the property of Halliburton Energy Services and neither it nor any part thereof, nor a copy thereof, is to be published or disclosed without first securing the expressed written approval of Halliburton. It may however be used in the course of regular business operations by any person or concern receiving such report from Halliburton. This report is for information purposes only and the content is limited to the sample described. Halliburton makes no warranties, expressed or implied, as to the accuracy of the contents or results. Any user of this report agrees Halliburton shall not be liable for any loss or damage regardless of cause, including any act or omission of Halliburton, resulting from the use hereof.