

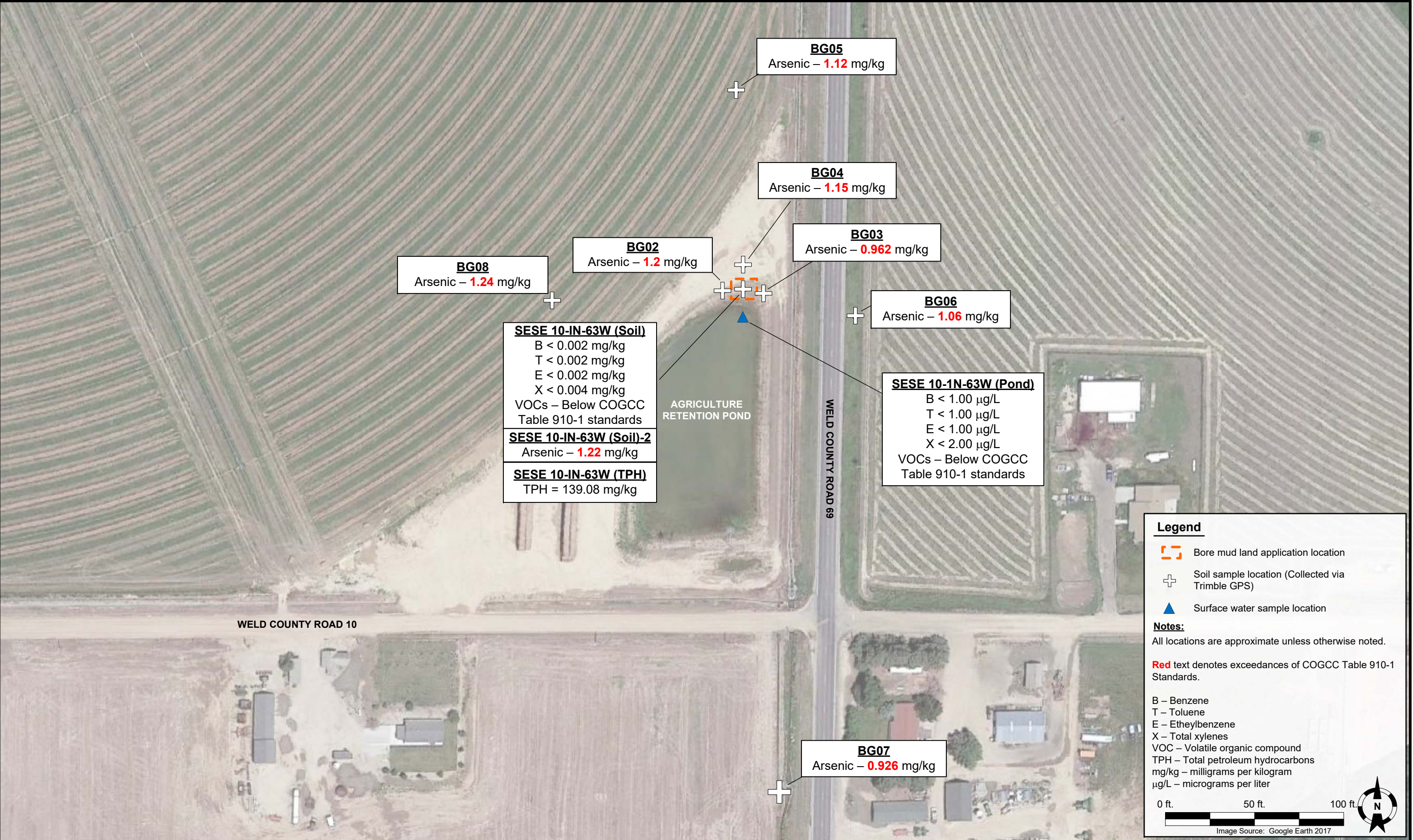
DATE:	July 20, 2017
DESIGNED BY:	M. Jahn
DRAWN BY:	M. Jahn



Kerr-McGee Oil and Gas Onshore, LP
Fehrn 16N-32HZ – Land Fed. 13N -32HZ
 SESE, Section 10, Township 1 North, Range 63 West
 Weld County, Colorado

Noble Energy Pipe Bore
 Sample Location Map

FIGURE
2



DATE:	September 12, 2017
DESIGNED BY:	M. Jahn
DRAWN BY:	M. Jahn



Kerr-McGee Oil and Gas Onshore, LP
Fehrn 16N-32HZ – Land Fed. 13N -32HZ
SESE, Section 10, Township 1 North, Range 63 West
Weld County, Colorado

Bore Mud Land
Application Site Map

FIGURE
3