

## Inspection Photos



**Photo 1.** 2015 aerial image shows access road and location disturbance.

## Inspection Photos



**Photo 2.** Facing northeast toward the access road which has not been reclaimed.



## Inspection Photos



**Photo 3.** Facing northeast toward the location. The location has a perimeter fence that is not maintained.



## Inspection Photos



**Photo 4.** Center of the location facing north. There are undesirable weeds throughout the location (Russian thistle).



## Inspection Photos



**Photo 5.** Center of the location facing west. There are undesirable weeds throughout the location (Russian thistle).



## Inspection Photos



**Photo 6.** Center of the location facing south.



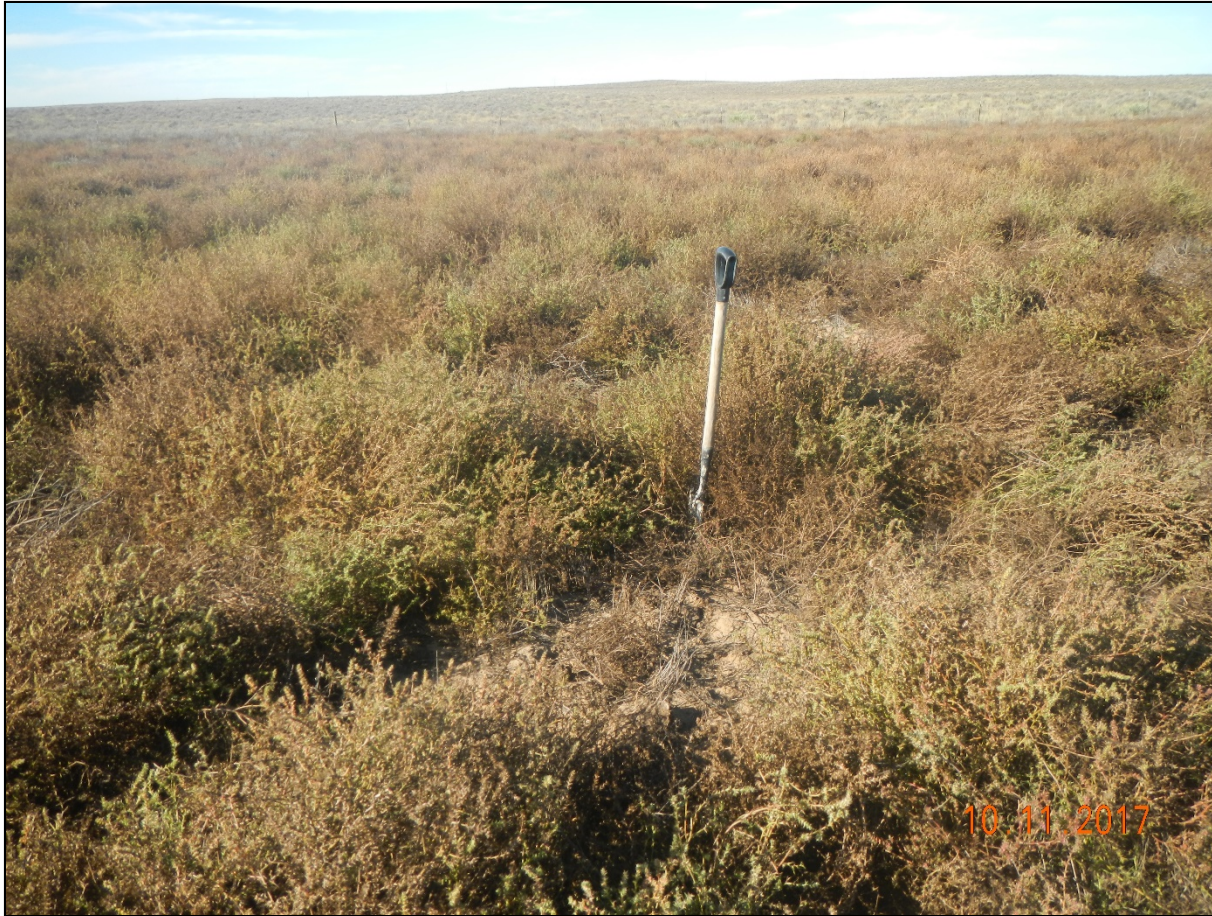
## Inspection Photos



**Photo 7.** Center of the location facing east.



## Inspection Photos



**Photo 8.** The 3.5 ft. shovel indicates height of weed debris throughout the location.



## Inspection Photos



**Photo 9.** East side of the location facing west. A 100 ft. tape measure shows the extent of this portion of the location without any desirable vegetation establishment.



## Inspection Photos



**Photo 10.** The fence around the location is not maintained. The barbed wire is only about 1 ft. off the ground and livestock can access the site.



## Inspection Photos



**Photo 7.** Facing north off the location toward the undisturbed vegetation.