

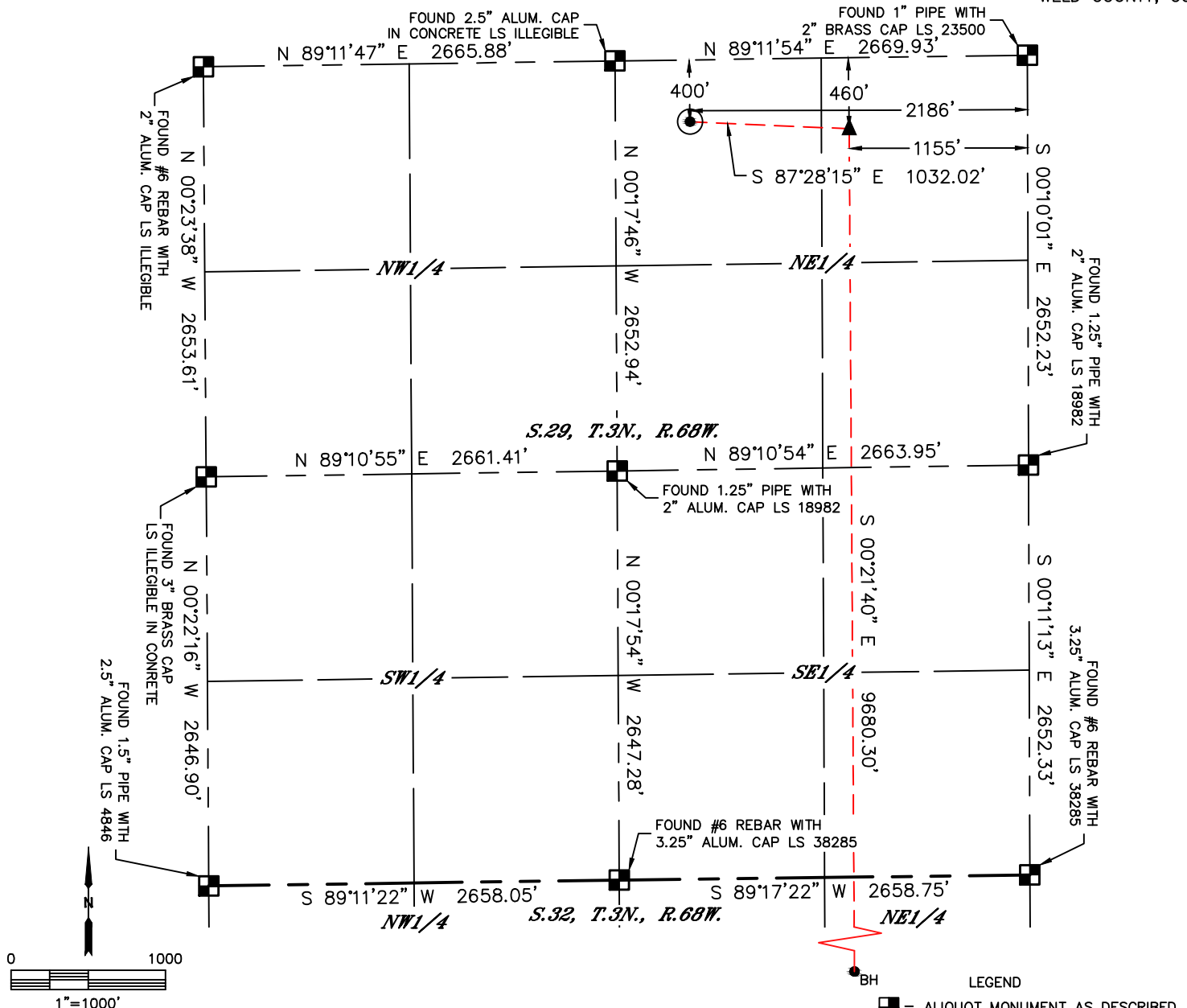


Lat40°, Inc. 6250 W. 10th Street, Unit 2, Greeley, CO 970-515-5294

# WELL LOCATION CERTIFICATE

OLANDER 19

SECTION: 29  
TOWNSHIP: 3N  
RANGE: 68W  
6TH. P.M.  
WELD COUNTY, CO



CLIENT: CUB CREEK ENERGY, LLC				LANDMAN: TRACY BUTZEN			
INSTRUMENT OPERATOR: DAVID BRANDON				SURVEY DATE: 6/8/2017			
SHL FOOTAGE		SHL LAT °	SHL LONG °	SHL PDOP	SHL ELEV (FT.)	SHL 1/4/1/4	SHL S-T-R
400	FNL	2186	FEL	40.20281	-105.02513	1.9	5031

BHL FOOTAGE	BHL LAT °	BHL LONG °	BHL S-T-R	EP LAT °	EP LONG °	EP S-T-R
460	FSL	1155	FEL	40.17611	-105.02141	32-3-68

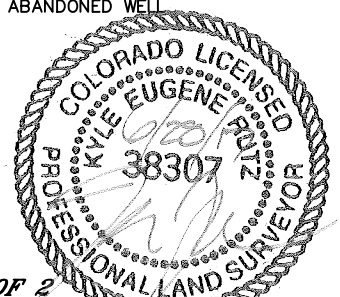
NOTE:

- Bearings shown are Grid Bearings of the Colorado State Plane Coordinate System, North Zone, North American Datum 1983. The lineal dimensions as contained herein are based upon the "U.S. Survey Foot."
- Distances to section lines measured at 90 degrees from said section lines.
- Ground elevations are based on an observed GPS elevation (NAVD 1988 DATUM).
- Latitude and Longitude shown are (NAD 83 DATUM).
- IMPROVEMENTS: See LOCATION DRAWING for all visible improvements within 500' of oil and gas location.
- This map does not represent a boundary survey.

NEAREST CULTURAL ITEMS	
BUILDING	±504' SW
BUILDING UNIT	±585' NE
HIGH OCCUPANCY BUILDING UNIT	5280'+
DESIGNATED OUTSIDE ACTIVITY AREA	5280'+
PUBLIC ROAD (HIGHWAY 66)	±359' N
ABOVE GROUND UTILITY	±485' NW
RAILROAD	±3876' SE
PROPERTY LINE	±340' N

SHEET 1 OF 2

Kyle E. Rutz-On behalf of Lat40, Inc.  
Colorado Licensed Professional Land Surveyor No. 38307  
DATE: 8/3/2017  
PROJECT#: 2017062



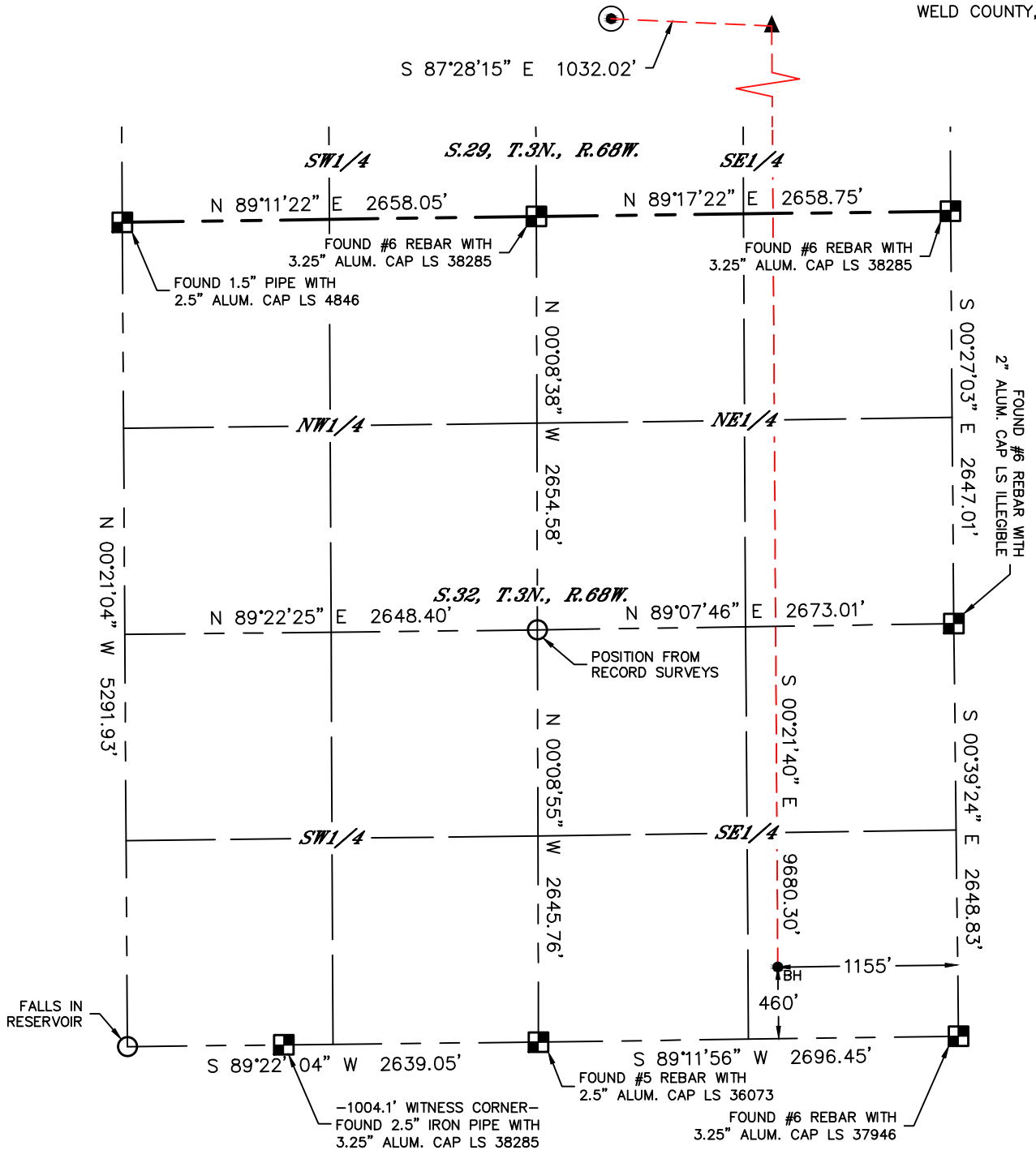


Lat40°, Inc. 6250 W. 10th Street, Unit 2, Greeley, CO 970-515-5294

# WELL LOCATION CERTIFICATE

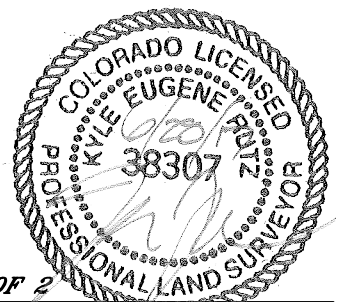
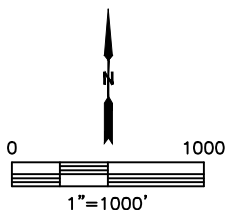
OLANDER 19

SECTION: 29  
TOWNSHIP: 3N  
RANGE: 68W  
6TH. P.M.  
WELD COUNTY, CO



## LEGEND

- = ALIQUOT MONUMENT AS DESCRIBED
- = CALCULATED POSITION
- ⊙ = SURFACE HOLE LOCATION (SHL)
- ▲ = ENTRY POINT LOCATION (EP)
- = BOTTOM HOLE LOCATION (BHL)
- ⊕ = EXISTING WELL
- ⊖ = ABANDONED WELL



SHEET 2 OF 2

Kyle E. Rutz—On behalf of Lat40, Inc.  
Colorado Licensed Professional Land Surveyor No. 38307  
DATE: 6/28/2017  
PROJECT#: 2017062