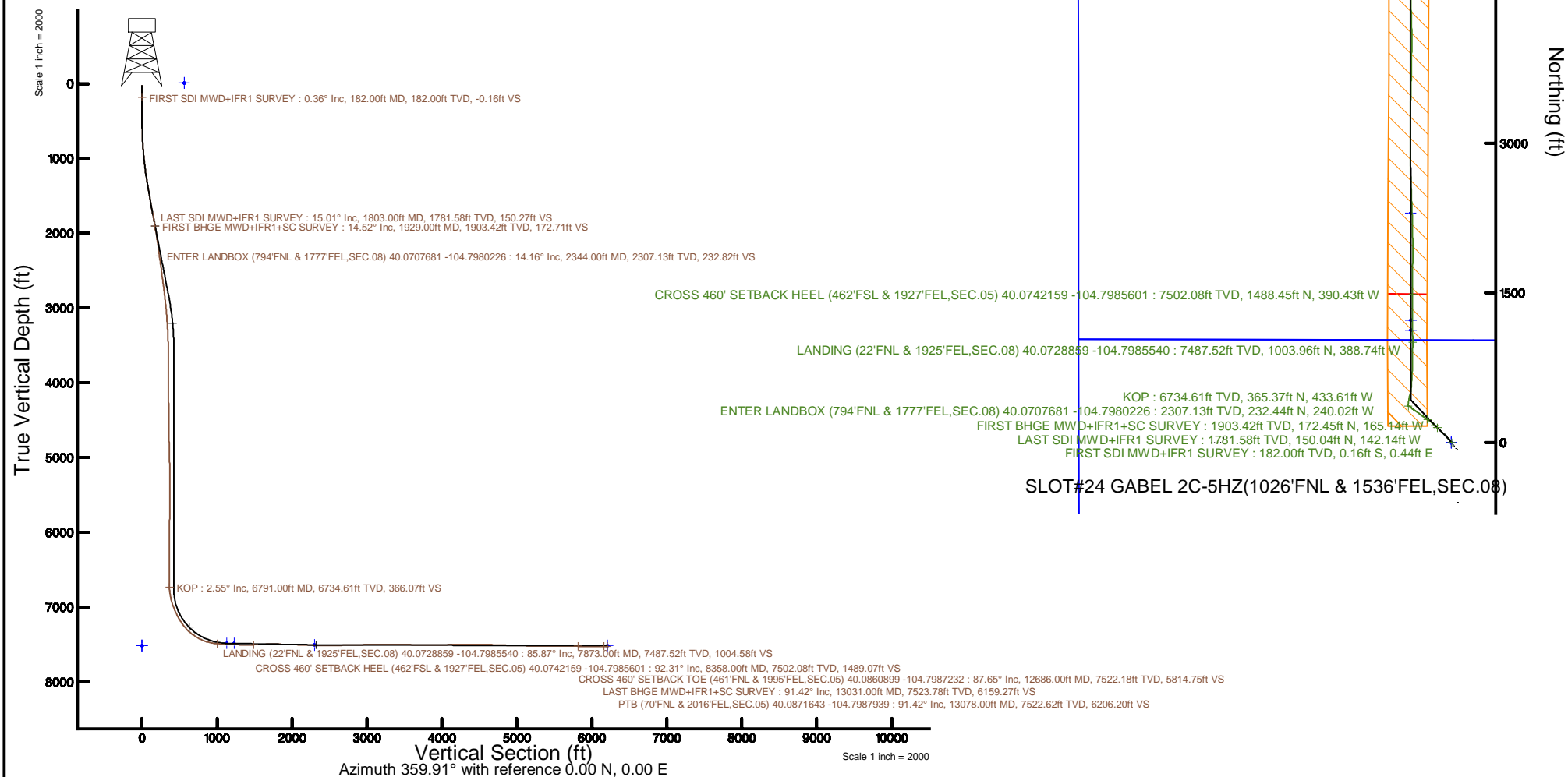


# KERR-MCGEE OIL & GAS ONSHORE LP (WA)

Location: COLORADO Slot: SLOT#24 GABEL 2C-5HZ(1026'FNL & 1536'FEL,SEC.08)  
 Field: WELD COUNTY (UTM/TRUE NORTH) Well: GABEL 2C-5HZ  
 Facility: SEC.08-T1N-R66W Wellbore: GABEL 2C-5HZ PWB

Plot reference wellpath is GABEL 2C-5HZ PWP Rev-C.0	Grid System: NAD83 / UTM Zone 13 North, US feet
True vertical depths are referenced to NABORS X22 (32) (RT)	* = Wellpath was transformed from a different geodetic datum
Measured depths are referenced to NABORS X22 (32) (RT)	North Reference: True north
NABORS X22 (32) (RT) to Mean Sea Level: 4975 feet	Scale: True distance
Mean Sea Level to Mud line (At Slot: SLOT#24 GABEL 2C-5HZ(1026'FNL & 1536'FEL,SEC.08)): 0 feet	Depths are in feet
Coordinates are in feet referenced to Slot	Created by: painseir on 2017-08-01
	Database: WA_DEN_Anadarko_Defn



## REFERENCE WELLPATH IDENTIFICATION

Operator	KERR-MCGEE OIL & GAS ONSHORE LP (WA)	Slot	SLOT#24 GABEL 2C-5HZ(1026'FNL & 1536'FEL,SEC.08)
Area	COLORADO	Well	GABEL 2C-5HZ
Field	WELD COUNTY (UTM/TRUE NORTH)	Wellbore	GABEL 2C-5HZ AWB
Facility	SEC.08-T1N-R66W		

## REPORT SETUP INFORMATION

Projection System	NAD83 / UTM Zone 13 North, US feet	Software System	WellArchitect® 5.0
North Reference	True	User	Painsetr
Scale	0.999604	Report Generated	8/1/2017 at 10:23 AM
Convergence at slot	0.14° East	Database/Source file	WA_DEN_Anadarko_Defn/GABEL_2C-5HZ_AWP.xml

## WELLPATH LOCATION

	Local coordinates		Grid coordinates		Geographic coordinates	
	North[ft]	East[ft]	Easting[US ft]	Northing[US ft]	Latitude	Longitude
Slot Location	13258459.24	-1436799.56	1697162.67	14552335.46	40°04'12.468"N	104°47'49.794"W
Facility Reference Pt			3197771.84	1268891.29	3°29'21.596"N	100°43'48.828"W
Field Reference Pt			1698235.31	14552047.82	40°04'09.600"N	104°47'36.000"W

## WELLPATH DATUM

Calculation method	Minimum curvature	NABORS X22 (32') (RT) to Installation Vertical Datum	4975.00ft
Horizontal Reference Pt	Slot	NABORS X22 (32') (RT) to Mean Sea Level	4975.00ft
Vertical Reference Pt	NABORS X22 (32') (RT)	NABORS X22 (32') (RT) to Mud Line at Slot (SLOT#24 GABEL 2C-5HZ(1026'FNL & 1536'FEL,SEC.08))	4975.00ft
MD Reference Pt	NABORS X22 (32') (RT)	Section Origin	N 0.00, E 0.00 ft
Field Vertical Reference	Mean Sea Level	Section Azimuth	359.91°

# Actual Wellpath Report

GABEL 2C-5HZ AWP

Page 2 of 6

REFERENCE WELLPATH IDENTIFICATION			
Operator	KERR-MCGEE OIL & GAS ONSHORE LP (WA)	Slot	SLOT#24 GABEL 2C-5HZ(1026'FNL & 1536'FEL,SEC.08)
Area	COLORADO	Well	GABEL 2C-5HZ
Field	WELD COUNTY (UTM/TRUE NORTH)	Wellbore	GABEL 2C-5HZ AWB
Facility	SEC.08-T1N-R66W		

WELLPATH DATA (123 stations) † = interpolated/extrapolated station												
MD [ft]	Inclination [°]	Azimuth [°]	TVD [ft]	Vert Sect [ft]	North [ft]	East [ft]	Grid East [US ft]	Grid North [US ft]	Latitude	Longitude	DLS [°/100ft]	Comments
0.00†	0.000	110.280	0.00	0.00	0.00	0.00	1697162.67	14552335.46	40°04'12.468"N	104°47'49.794"W	0.00	
32.00	0.000	110.280	32.00	0.00	0.00	0.00	1697162.67	14552335.46	40°04'12.468"N	104°47'49.794"W	0.00	
182.00	0.360	110.280	182.00	-0.16	-0.16	0.44	1697163.11	14552335.29	40°04'12.466"N	104°47'49.788"W	0.24	FIRST SDI MWD+IFR1 SURVEY
271.00	0.540	113.480	271.00	-0.43	-0.43	1.09	1697163.76	14552335.03	40°04'12.464"N	104°47'49.780"W	0.20	
357.00	0.270	94.550	356.99	-0.61	-0.60	1.66	1697164.33	14552334.85	40°04'12.462"N	104°47'49.773"W	0.35	
446.00	0.070	203.440	445.99	-0.67	-0.67	1.85	1697164.52	14552334.79	40°04'12.461"N	104°47'49.770"W	0.34	
535.00	1.530	304.530	534.98	-0.05	-0.05	0.85	1697163.52	14552335.41	40°04'12.468"N	104°47'49.783"W	1.74	
623.00	1.770	329.660	622.95	1.79	1.79	-0.80	1697161.86	14552337.24	40°04'12.486"N	104°47'49.804"W	0.86	
710.00	2.990	323.400	709.87	4.78	4.77	-2.84	1697159.82	14552340.22	40°04'12.515"N	104°47'49.830"W	1.43	
797.00	3.800	325.670	796.72	8.98	8.97	-5.82	1697156.83	14552344.41	40°04'12.557"N	104°47'49.869"W	0.94	
883.00	5.610	324.500	882.42	14.77	14.75	-9.86	1697152.77	14552350.18	40°04'12.614"N	104°47'49.921"W	2.11	
973.00	7.240	317.830	971.86	22.56	22.54	-16.23	1697146.40	14552357.95	40°04'12.691"N	104°47'50.003"W	1.99	
1057.00	8.470	317.830	1055.07	31.08	31.04	-23.93	1697138.67	14552366.43	40°04'12.775"N	104°47'50.102"W	1.46	
1146.00	9.970	314.910	1142.92	41.40	41.34	-33.79	1697128.80	14552376.70	40°04'12.877"N	104°47'50.229"W	1.76	
1234.00	11.910	316.320	1229.31	53.36	53.29	-45.46	1697117.11	14552388.62	40°04'12.995"N	104°47'50.379"W	2.23	
1323.00	13.480	314.390	1316.13	67.28	67.19	-59.21	1697103.32	14552402.48	40°04'13.132"N	104°47'50.556"W	1.83	
1412.00	13.900	315.910	1402.61	82.24	82.12	-74.06	1697088.45	14552417.38	40°04'13.280"N	104°47'50.747"W	0.62	
1499.00	13.780	315.950	1487.08	97.22	97.08	-88.54	1697073.94	14552432.29	40°04'13.427"N	104°47'50.933"W	0.14	
1585.00	13.870	314.810	1570.59	111.87	111.70	-102.97	1697059.48	14552446.88	40°04'13.572"N	104°47'51.119"W	0.33	
1672.00	14.410	314.300	1654.95	126.80	126.61	-118.12	1697044.31	14552461.75	40°04'13.719"N	104°47'51.313"W	0.64	
1761.00	15.080	314.290	1741.02	142.65	142.43	-134.33	1697028.06	14552477.52	40°04'13.876"N	104°47'51.522"W	0.75	
1803.00	15.010	314.200	1781.58	150.27	150.04	-142.14	1697020.24	14552485.11	40°04'13.951"N	104°47'51.622"W	0.18	LAST SDI MWD+IFR1 SURVEY
1929.00	14.520	314.320	1903.42	172.71	172.45	-165.14	1696997.20	14552507.46	40°04'14.172"N	104°47'51.918"W	0.39	FIRST BHGE MWD+IFR1+SC SURVEY
2023.00	12.570	311.170	1994.80	187.71	187.42	-181.27	1696981.04	14552522.38	40°04'14.320"N	104°47'52.126"W	2.22	
2117.00	12.920	309.310	2086.49	201.12	200.81	-197.10	1696965.18	14552535.73	40°04'14.452"N	104°47'52.329"W	0.57	
2211.00	13.450	306.770	2178.01	214.35	214.01	-213.99	1696948.27	14552548.89	40°04'14.583"N	104°47'52.547"W	0.84	
2305.00	14.090	304.620	2269.31	227.43	227.05	-232.17	1696930.08	14552561.89	40°04'14.712"N	104°47'52.780"W	0.87	
2344.00†	14.164	304.277	2307.13	232.82	232.44	-240.02	1696922.22	14552567.25	40°04'14.765"N	104°47'52.881"W	0.29	ENTER LANDBOX (794'FNL & 1777'FEL,SEC.08) 40.0707681 -104.7980226
2399.00	14.270	303.800	2360.44	240.40	240.00	-251.21	1696911.01	14552574.79	40°04'14.840"N	104°47'53.025"W	0.29	
2492.00	12.320	301.980	2450.95	252.06	251.63	-269.15	1696893.05	14552586.37	40°04'14.955"N	104°47'53.256"W	2.14	
2586.00	12.610	305.770	2542.73	263.40	262.94	-285.98	1696876.20	14552597.64	40°04'15.066"N	104°47'53.473"W	0.92	
2680.00	12.710	307.430	2634.45	275.71	275.22	-302.52	1696859.64	14552609.88	40°04'15.188"N	104°47'53.685"W	0.40	
2774.00	13.100	307.500	2726.07	288.50	287.99	-319.18	1696842.96	14552622.61	40°04'15.314"N	104°47'53.900"W	0.42	
2868.00	10.900	306.580	2818.01	300.31	299.78	-334.77	1696827.35	14552634.35	40°04'15.430"N	104°47'54.100"W	2.35	
2962.00	10.760	304.430	2910.34	310.59	310.03	-349.15	1696812.95	14552644.57	40°04'15.532"N	104°47'54.285"W	0.45	
3056.00	9.440	303.890	3002.88	319.88	319.29	-362.78	1696799.30	14552653.79	40°04'15.623"N	104°47'54.460"W	1.41	
3151.00	8.170	303.790	3096.76	327.99	327.39	-374.86	1696787.21	14552661.86	40°04'15.703"N	104°47'54.616"W	1.34	
3244.00	6.950	304.890	3188.95	334.90	334.29	-384.97	1696777.09	14552668.73	40°04'15.771"N	104°47'54.746"W	1.32	
3338.00	5.640	305.580	3282.38	340.86	340.23	-393.39	1696768.66	14552674.65	40°04'15.830"N	104°47'54.854"W	1.40	
3432.00	3.300	312.920	3376.09	345.40	344.76	-399.13	1696762.91	14552679.17	40°04'15.875"N	104°47'54.928"W	2.56	
3552.00	0.780	328.810	3496.00	348.45	347.81	-402.08	1696759.95	14552682.21	40°04'15.905"N	104°47'54.966"W	2.13	
3929.00	0.960	290.260	3872.96	351.75	351.10	-406.38	1696755.66	14552685.49	40°04'15.938"N	104°47'55.021"W	0.16	
4305.00	0.570	306.760	4248.93	353.97	353.31	-410.83	1696751.20	14552687.69	40°04'15.959"N	104°47'55.078"W	0.12	
4680.00	0.900	348.540	4623.90	357.97	357.31	-412.91	1696749.11	14552691.68	40°04'15.999"N	104°47'55.105"W	0.16	
5054.00	1.990	324.110	4997.78	366.12	365.45	-417.30	1696744.70	14552699.81	40°04'16.079"N	104°47'55.162"W	0.33	

REFERENCE WELLPATH IDENTIFICATION			
Operator	KERR-MCGEE OIL & GAS ONSHORE LP (WA)	Slot	SLOT#24 GABEL 2C-5HZ(1026'FNL & 1536'FEL,SEC.08)
Area	COLORADO	Well	GABEL 2C-5HZ
Field	WELD COUNTY (UTM/TRUE NORTH)	Wellbore	GABEL 2C-5HZ AWB
Facility	SEC.08-T1N-R66W		

WELLPATH DATA (123 stations) † = interpolated/extrapolated station												
MD [ft]	Inclination [°]	Azimuth [°]	TVD [ft]	Vert Sect [ft]	North [ft]	East [ft]	Grid East [US ft]	Grid North [US ft]	Latitude	Longitude	DLS "/100ft	Comments
5148.00	0.280	322.640	5091.76	367.63	366.95	-418.39	1696743.60	14552701.31	40°04'16.094"N	104°47'55.176"W	1.82	
5523.00	1.260	269.810	5466.72	368.35	367.67	-423.07	1696738.93	14552702.01	40°04'16.101"N	104°47'55.236"W	0.30	
5617.00	0.060	57.190	5560.71	368.37	367.69	-424.07	1696737.93	14552702.03	40°04'16.102"N	104°47'55.249"W	1.39	
5993.00	0.840	217.470	5936.70	366.29	365.61	-425.58	1696736.43	14552699.95	40°04'16.081"N	104°47'55.268"W	0.24	
6087.00	0.340	101.110	6030.70	365.69	365.01	-425.72	1696736.28	14552699.35	40°04'16.075"N	104°47'55.270"W	1.10	
6463.00	0.730	275.040	6406.69	365.69	365.01	-427.01	1696734.99	14552699.34	40°04'16.075"N	104°47'55.287"W	0.28	
6745.00	1.520	260.980	6688.64	365.27	364.58	-432.50	1696729.51	14552698.90	40°04'16.071"N	104°47'55.357"W	0.29	
6791.00†	2.554	329.942	6734.61	366.07	365.37	-433.61	1696728.39	14552699.69	40°04'16.079"N	104°47'55.372"W	5.35	KOP
6839.00	4.880	347.620	6782.51	368.99	368.29	-434.59	1696727.42	14552702.61	40°04'16.107"N	104°47'55.384"W	5.35	
6933.00	12.080	5.880	6875.43	382.70	382.00	-434.44	1696727.53	14552716.31	40°04'16.243"N	104°47'55.382"W	8.08	
7027.00	18.530	9.280	6966.05	407.24	406.55	-431.02	1696730.90	14552740.86	40°04'16.486"N	104°47'55.338"W	6.92	
7121.00	25.570	12.360	7053.13	441.83	441.15	-424.26	1696737.58	14552775.47	40°04'16.828"N	104°47'55.251"W	7.59	
7215.00	29.730	13.210	7136.37	484.34	483.68	-414.58	1696747.15	14552818.00	40°04'17.248"N	104°47'55.127"W	4.45	
7309.00	34.530	7.160	7215.97	533.50	532.85	-405.93	1696755.69	14552867.16	40°04'17.734"N	104°47'55.016"W	6.14	
7403.00	42.260	3.590	7289.60	591.56	590.92	-400.62	1696760.86	14552925.23	40°04'18.308"N	104°47'54.947"W	8.55	
7497.00	50.800	3.130	7354.21	659.60	658.96	-396.65	1696764.68	14552993.25	40°04'18.980"N	104°47'54.896"W	9.09	
7591.00	59.830	2.360	7407.65	736.72	736.09	-392.98	1696768.17	14553070.35	40°04'19.742"N	104°47'54.849"W	9.63	
7684.00	69.200	0.810	7447.62	820.54	819.91	-390.70	1696770.25	14553154.15	40°04'20.570"N	104°47'54.820"W	10.19	
7778.00	77.960	0.690	7474.17	910.60	909.98	-389.52	1696771.23	14553244.18	40°04'21.461"N	104°47'54.805"W	9.32	
7873.00	85.870	0.270	7487.52	1004.58	1003.96	-388.74	1696771.80	14553338.13	40°04'22.389"N	104°47'54.794"W	8.34	LANDING (22'FNL & 1925'FEL,SEC.08) 40.0728859 -104.7985540
7967.00	85.780	358.550	7494.36	1098.32	1097.70	-389.71	1696770.62	14553431.83	40°04'23.316"N	104°47'54.807"W	1.83	
8061.00	88.180	359.920	7499.31	1192.18	1191.55	-390.96	1696769.15	14553525.64	40°04'24.243"N	104°47'54.823"W	2.94	
8154.00	88.610	359.280	7501.92	1285.14	1284.51	-391.61	1696768.29	14553618.56	40°04'25.162"N	104°47'54.831"W	0.83	
8248.00	89.080	0.380	7503.81	1379.12	1378.49	-391.89	1696767.80	14553712.50	40°04'26.090"N	104°47'54.835"W	1.27	
8342.00	92.250	1.060	7502.72	1473.09	1472.46	-390.70	1696768.76	14553806.44	40°04'27.019"N	104°47'54.820"W	3.45	
8358.00†	92.308	0.924	7502.08	1489.07	1488.45	-390.43	1696769.00	14553822.42	40°04'27.177"N	104°47'54.816"W	0.92	CROSS 460' SETBACK HEEL (462'FSL & 1927'FEL,SEC.05) 40.0742159 -104.7985601
8436.00	92.590	0.260	7498.75	1567.00	1566.37	-389.62	1696769.63	14553900.31	40°04'27.947"N	104°47'54.806"W	0.92	
8531.00	91.570	359.610	7495.30	1661.93	1661.31	-389.73	1696769.31	14553995.21	40°04'28.885"N	104°47'54.807"W	1.27	
8625.00	89.780	0.640	7494.20	1755.92	1755.30	-389.53	1696769.30	14554089.16	40°04'29.814"N	104°47'54.805"W	2.20	
8719.00	88.770	0.380	7495.39	1849.91	1849.29	-388.69	1696769.92	14554183.11	40°04'30.743"N	104°47'54.794"W	1.11	
8812.00	87.840	359.780	7498.14	1942.86	1942.24	-388.56	1696769.84	14554276.03	40°04'31.662"N	104°47'54.792"W	1.19	
8906.00	88.460	359.670	7501.17	2036.81	2036.19	-389.01	1696769.17	14554369.95	40°04'32.590"N	104°47'54.798"W	0.67	
9000.00	89.110	359.670	7503.16	2130.79	2130.17	-389.55	1696768.42	14554463.88	40°04'33.519"N	104°47'54.805"W	0.69	
9094.00	87.570	357.810	7505.89	2224.73	2224.10	-391.62	1696766.14	14554557.77	40°04'34.447"N	104°47'54.832"W	2.57	
9188.00	87.880	357.540	7509.62	2318.58	2317.95	-395.43	1696762.12	14554651.57	40°04'35.374"N	104°47'54.881"W	0.44	
9282.00	89.540	358.220	7511.74	2412.49	2411.86	-398.90	1696758.43	14554745.44	40°04'36.302"N	104°47'54.926"W	1.91	
9376.00	90.090	357.670	7512.04	2506.44	2505.79	-402.27	1696754.85	14554839.33	40°04'37.231"N	104°47'54.969"W	0.83	
9470.00	91.170	357.530	7511.01	2600.35	2599.71	-406.21	1696750.70	14554933.19	40°04'38.159"N	104°47'55.020"W	1.16	
9563.00	92.250	357.090	7508.23	2693.22	2692.56	-410.57	1696746.13	14555026.00	40°04'39.076"N	104°47'55.076"W	1.25	
9658.00	91.790	359.130	7504.88	2788.10	2787.44	-413.70	1696742.78	14555120.84	40°04'40.014"N	104°47'55.116"W	2.20	
9752.00	90.400	0.710	7503.08	2882.08	2881.42	-413.83	1696742.44	14555214.78	40°04'40.943"N	104°47'55.118"W	2.24	
9846.00	91.110	0.940	7501.85	2976.06	2975.40	-412.48	1696743.57	14555308.73	40°04'41.871"N	104°47'55.100"W	0.79	
9940.00	92.090	0.660	7499.22	3070.01	3069.36	-411.17	1696744.67	14555402.64	40°04'42.800"N	104°47'55.083"W	1.08	
10034.00	90.460	0.180	7497.13	3163.98	3163.33	-410.48	1696745.15	14555496.58	40°04'43.729"N	104°47'55.075"W	1.81	
10128.00	89.780	0.680	7496.93	3257.98	3257.32	-409.77	1696745.64	14555590.54	40°04'44.657"N	104°47'55.066"W	0.90	

# Actual Wellpath Report

GABEL 2C-5HZ AWP

Page 4 of 6

REFERENCE WELLPATH IDENTIFICATION			
Operator	KERR-MCGEE OIL & GAS ONSHORE LP (WA)	Slot	SLOT#24 GABEL 2C-5HZ(1026'FNL & 1536'FEL,SEC.08)
Area	COLORADO	Well	GABEL 2C-5HZ
Field	WELD COUNTY (UTM/TRUE NORTH)	Wellbore	GABEL 2C-5HZ AWB
Facility	SEC.08-T1N-R66W		

WELLPATH DATA (123 stations) † = interpolated/extrapolated station												
MD [ft]	Inclination [°]	Azimuth [°]	TVD [ft]	Vert Sect [ft]	North [ft]	East [ft]	Grid East [US ft]	Grid North [US ft]	Latitude	Longitude	DLS ["/100ft]	Comments
10222.00	90.060	359.970	7497.06	3351.97	3351.32	409.24	1696745.96	14555684.50	40°04'45.586"N	104°47'55.059"W	0.81	
10316.00	89.510	0.330	7497.42	3445.97	3445.32	409.00	1696745.99	14555778.46	40°04'46.515"N	104°47'55.056"W	0.70	
10410.00	87.290	2.120	7500.04	3539.90	3539.25	406.99	1696747.78	14555872.36	40°04'47.444"N	104°47'55.030"W	3.03	
10504.00	88.090	1.640	7503.83	3633.77	3633.12	403.91	1696750.65	14555966.20	40°04'48.371"N	104°47'54.990"W	0.99	
10598.00	89.080	0.590	7506.15	3727.71	3727.07	402.08	1696752.26	14556060.12	40°04'49.300"N	104°47'54.967"W	1.53	
10692.00	90.460	1.210	7506.53	3821.70	3821.06	400.60	1696753.52	14556154.07	40°04'50.228"N	104°47'54.948"W	1.61	
10786.00	90.520	0.770	7505.73	3915.68	3915.04	398.98	1696754.93	14556248.02	40°04'51.157"N	104°47'54.927"W	0.47	
10880.00	91.330	0.010	7504.21	4009.66	4009.03	398.34	1696755.36	14556341.97	40°04'52.086"N	104°47'54.919"W	1.18	
10972.00	92.120	359.610	7501.44	4101.62	4100.98	398.64	1696754.84	14556433.89	40°04'52.995"N	104°47'54.922"W	0.96	
11066.00	89.850	358.540	7499.82	4195.59	4194.95	400.16	1696753.11	14556527.81	40°04'53.923"N	104°47'54.942"W	2.67	
11160.00	90.650	358.020	7499.41	4289.55	4288.90	402.98	1696750.08	14556621.72	40°04'54.852"N	104°47'54.978"W	1.02	
11254.00	88.860	359.180	7499.81	4383.52	4382.87	405.28	1696747.57	14556715.64	40°04'55.780"N	104°47'55.008"W	2.27	
11348.00	89.660	358.620	7501.03	4477.49	4476.84	407.08	1696745.55	14556809.58	40°04'56.709"N	104°47'55.031"W	1.04	
11441.00	90.650	358.580	7500.78	4570.47	4569.81	409.35	1696743.07	14556902.51	40°04'57.628"N	104°47'55.060"W	1.07	
11535.00	87.870	358.510	7501.99	4664.42	4663.77	411.74	1696740.47	14556996.41	40°04'58.556"N	104°47'55.091"W	2.96	
11629.00	87.810	357.680	7505.53	4758.31	4757.65	414.86	1696737.13	14557090.25	40°04'59.484"N	104°47'55.131"W	0.88	
11722.00	88.090	357.430	7508.86	4851.17	4850.50	418.83	1696732.96	14557183.06	40°05'00.402"N	104°47'55.182"W	0.40	
11817.00	88.400	0.290	7511.77	4946.10	4945.43	420.72	1696730.85	14557277.94	40°05'01.340"N	104°47'55.207"W	3.03	
11910.00	88.800	359.790	7514.04	5039.07	5038.40	420.65	1696730.71	14557370.88	40°05'02.258"N	104°47'55.206"W	0.69	
12004.00	89.200	359.420	7515.68	5133.05	5132.38	421.30	1696729.84	14557464.82	40°05'03.187"N	104°47'55.214"W	0.58	
12098.00	89.450	359.170	7516.79	5227.04	5226.37	422.46	1696728.47	14557558.77	40°05'04.116"N	104°47'55.229"W	0.38	
12192.00	89.510	359.020	7517.64	5321.03	5320.36	423.94	1696726.78	14557652.71	40°05'05.045"N	104°47'55.248"W	0.17	
12286.00	88.980	359.590	7518.88	5415.02	5414.34	425.08	1696725.42	14557746.66	40°05'05.973"N	104°47'55.263"W	0.83	
12380.00	90.000	359.600	7519.72	5509.01	5508.33	425.75	1696724.54	14557840.61	40°05'06.902"N	104°47'55.271"W	1.09	
12474.00	90.770	358.900	7519.09	5603.00	5602.32	426.98	1696723.10	14557934.56	40°05'07.831"N	104°47'55.287"W	1.11	
12568.00	89.690	357.040	7518.71	5696.94	5696.26	430.31	1696719.56	14558028.45	40°05'08.759"N	104°47'55.330"W	2.29	
12662.00	87.350	357.360	7521.14	5790.80	5790.11	434.90	1696714.76	14558122.25	40°05'09.687"N	104°47'55.389"W	2.51	
12686.00†	87.649	357.319	7522.18	5814.75	5814.06	436.01	1696713.59	14558146.19	40°05'09.924"N	104°47'55.404"W	1.26	CROSS 460' SETBACK TOE (461'FNL & 1995'FEL,SEC.05) 40.0860899 -104.7987232
12756.00	88.520	357.200	7524.52	5884.63	5883.94	439.35	1696710.09	14558216.03	40°05'10.614"N	104°47'55.447"W	1.26	
12850.00	89.880	357.090	7525.84	5978.51	5977.81	444.04	1696705.19	14558309.86	40°05'11.542"N	104°47'55.507"W	1.45	
12944.00	90.680	356.920	7525.38	6072.39	6071.68	448.95	1696700.07	14558403.68	40°05'12.469"N	104°47'55.570"W	0.87	
13031.00	91.420	357.160	7523.78	6159.27	6158.55	453.44	1696695.38	14558490.50	40°05'13.328"N	104°47'55.628"W	0.89	LAST BHGE MWD+IFR1+SC SURVEY
13078.00	91.420	357.160	7522.62	6206.20	6205.47	455.77	1696692.95	14558537.40	40°05'13.792"N	104°47'55.658"W	0.00	PTB (70'FNL & 2016'FEL,SEC.05) 40.0871643 -104.7987939

REFERENCE WELLPATH IDENTIFICATION			
Operator	KERR-MCGEE OIL & GAS ONSHORE LP (WA)	Slot	SLOT#24 GABEL 2C-5HZ(1026'FNL & 1536'FEL,SEC.08)
Area	COLORADO	Well	GABEL 2C-5HZ
Field	WELD COUNTY (UTM/TRUE NORTH)	Wellbore	GABEL 2C-5HZ AWB
Facility	SEC.08-T1N-R66W		

TARGETS								
Name	TVD [ft]	North [ft]	East [ft]	Grid East [US ft]	Grid North [US ft]	Latitude	Longitude	Shape
SEC.05-T1N-R66W	-8.00	563.26	1127.88	1698288.81	14552901.06	40°04'18.034"N	104°47'35.286"W	polygon
SEC.08-T1N-R66W	-8.00	563.26	1127.88	1698288.81	14552901.06	40°04'18.034"N	104°47'35.286"W	polygon
GABEL 2C-5HZ HEEL REV-1(200'FSL & 1938'FEL,SEC.05)	7483.00	1227.67	-406.64	1696753.39	14553561.70	40°04'24.600"N	104°47'55.025"W	point
GABEL 2C-5HZ HEEL REV-3(100'FSL & 1938'FEL,SEC.05)	7483.00	1127.66	-406.64	1696753.62	14553461.74	40°04'23.612"N	104°47'55.025"W	point
GABEL 2C-5HZ INT. TARGET@2300'VS	7504.00	2299.35	-408.37	1696749.22	14554632.95	40°04'35.191"N	104°47'55.047"W	point
GABEL 2C-5HZ 460' SETBACK 1	7514.00	0.00	0.00	1697162.67	14552335.46	40°04'12.468"N	104°47'49.794"W	polygon
GABEL 2C-5HZ 460' SETBACK 2	7514.00	0.00	0.00	1697162.67	14552335.46	40°04'12.468"N	104°47'49.794"W	polygon
GABEL 2C-5HZ BHL REV-1(68'FNL & 1975'FEL,SEC.05)	7514.00	6206.81	-414.68	1696734.02	14558538.83	40°05'13.805"N	104°47'55.129"W	point
GABEL 2C-5HZ LANDBOX	7514.00	0.00	0.00	1697162.67	14552335.46	40°04'12.468"N	104°47'49.794"W	polygon

WELLPATH COMPOSITION - Ref Wellbore: GABEL 2C-5HZ AWB Ref Wellpath: GABEL 2C-5HZ AWP				
Start MD [ft]	End MD [ft]	Positional Uncertainty Model	Log Name/Comment	Wellbore
32.00	1803.00	Custom APC ISCWSA REV 2 MWD+IFR1 (approximation)	SDI Custom APC ISCWSA Rev-2 MWD+IFR1 <182 - 1803>	GABEL 2C-5HZ AWB
1803.00	13031.00	Custom APC ISCWSA REV 2 MWD+IFR1+SC (approximation)	BHGE Custom APC ISCWSA Rev-2 MWD+IFR1+SC <1929 - 13031>	GABEL 2C-5HZ AWB
13031.00	13078.00	Blind Drilling (std)	Projection to bit	GABEL 2C-5HZ AWB

REFERENCE WELLPATH IDENTIFICATION			
Operator	KERR-MCGEE OIL & GAS ONSHORE LP (WA)	Slot	SLOT#24 GABEL 2C-5HZ(1026'FNL & 1536'FEL,SEC.08)
Area	COLORADO	Well	GABEL 2C-5HZ
Field	WELD COUNTY (UTM/TRUE NORTH)	Wellbore	GABEL 2C-5HZ AWB
Facility	SEC.08-T1N-R66W		

WELLPATH COMMENTS				
MD [ft]	Inclination [°]	Azimuth [°]	TVD [ft]	Comment
182.00	0.360	110.280	182.00	FIRST SDI MWD+IFR1 SURVEY
1803.00	15.010	314.200	1781.58	LAST SDI MWD+IFR1 SURVEY
1929.00	14.520	314.320	1903.42	FIRST BHGE MWD+IFR1+SC SURVEY
2344.00	14.164	304.277	2307.13	ENTER LANDBOX (794'FNL & 1777'FEL, SEC.08) 40.0707681 -104.7980226
6791.00	2.554	329.942	6734.61	KOP
7873.00	85.870	0.270	7487.52	LANDING (22'FNL & 1925'FEL, SEC.08) 40.0728859 -104.7985540
8358.00	92.308	0.924	7502.08	CROSS 460' SETBACK HEEL (462'FSL & 1927'FEL, SEC.05) 40.0742159 -104.7985601
12686.00	87.649	357.319	7522.18	CROSS 460' SETBACK TOE (461'FNL & 1995'FEL, SEC.05) 40.0860899 -104.7987232
13031.00	91.420	357.160	7523.78	LAST BHGE MWD+IFR1+SC SURVEY
13078.00	91.420	357.160	7522.62	PTB (70'FNL & 2016'FEL, SEC.05) 40.0871643 -104.7987939