

# SRC ENERGY

Location: COLORADO Slot: SLOT#15 DONN 4C-20-L (778'FNL & 251'FEL, SEC.21)  
Field: WELD COUNTY (NAD83,TRUE NORTH) Well: DONN 4C-20-L  
Facility: SEC.21-T06N-R66W Wellbore: DONN 4C-20-L PWB

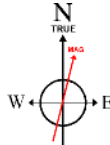
Plot reference wellpath is DONN 4C-20-L PWP (REV-A.0)	Grid System: NAD83 / Lambert Colorado SP, Northern Zone (501), US feet
True vertical depths are referenced to PRECISION DRILLING (25) (RKB)	North Reference: True north
Measured depths are referenced to PRECISION DRILLING (25) (RKB)	Scale: True distance
PRECISION DRILLING (25) (RKB) to Mean Sea Level: 4777 feet	Depths are in feet
Mean Sea Level to Mud line (At Slot: SLOT#15 DONN 4C-20-L (778'FNL & 251'FEL, SEC.21)): 0 feet	Created by: doddanna on 2017-08-22
Coordinates are in feet referenced to Slot	Database: Denver DB

## Location Information

Facility Name			Grid East (US ft)	Grid North (US ft)	Latitude	Longitude
SEC.21-T06N-R66W			3201871.604	1417148.268	40°28'34.342"N	104°46'27.660"W
Slot	Local N (ft)	Local E (ft)	Grid East (US ft)	Grid North (US ft)	Latitude	Longitude
SLOT#15 DONN 4C-20-L (778'FNL & 251'FEL, SEC.21)	1023.69	24.76	3201887.985	1418172.089	40°28'44.458"N	104°46'27.340"W
PRECISION DRILLING (25) (RKB) to Mud line (At Slot: SLOT#15 DONN 4C-20-L (778'FNL & 251'FEL, SEC.21))					4777ft	
Mean Sea Level to Mud line (At Slot: SLOT#15 DONN 4C-20-L (778'FNL & 251'FEL, SEC.21))					0ft	
PRECISION DRILLING (25) (RKB) to Mean Sea Level					4777ft	

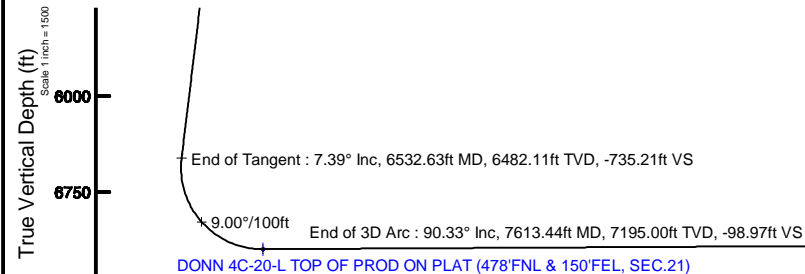
## Survey Program

Start MD (ft)	End MD (ft)	Tool	Model	Log Name/Comment	Wellbore
25.00	1750.00	BHI NavTrak	Custom BHI NavTrak (Standard Rotating+Axial Corr) (Rockies 0.03Gt model)		DONN 4C-20-L PWB
1750.00	17917.24	BHI AutoTrak Curve	Custom BHI AutoTrak Curve (IFR1, Short) (Rockies 0.03Gt model)		DONN 4C-20-L PWB



BGGM (1900.0 to 2019.0) Dip: 66.90° Field: 52436.6 nT  
Magnetic North is 8.38 degrees East of True North (at 8/15/2017)

To correct azimuth from Magnetic to True add 8.38 degrees



Azimuth 270.33° with reference 0.00 N, 0.00 E

## Targets

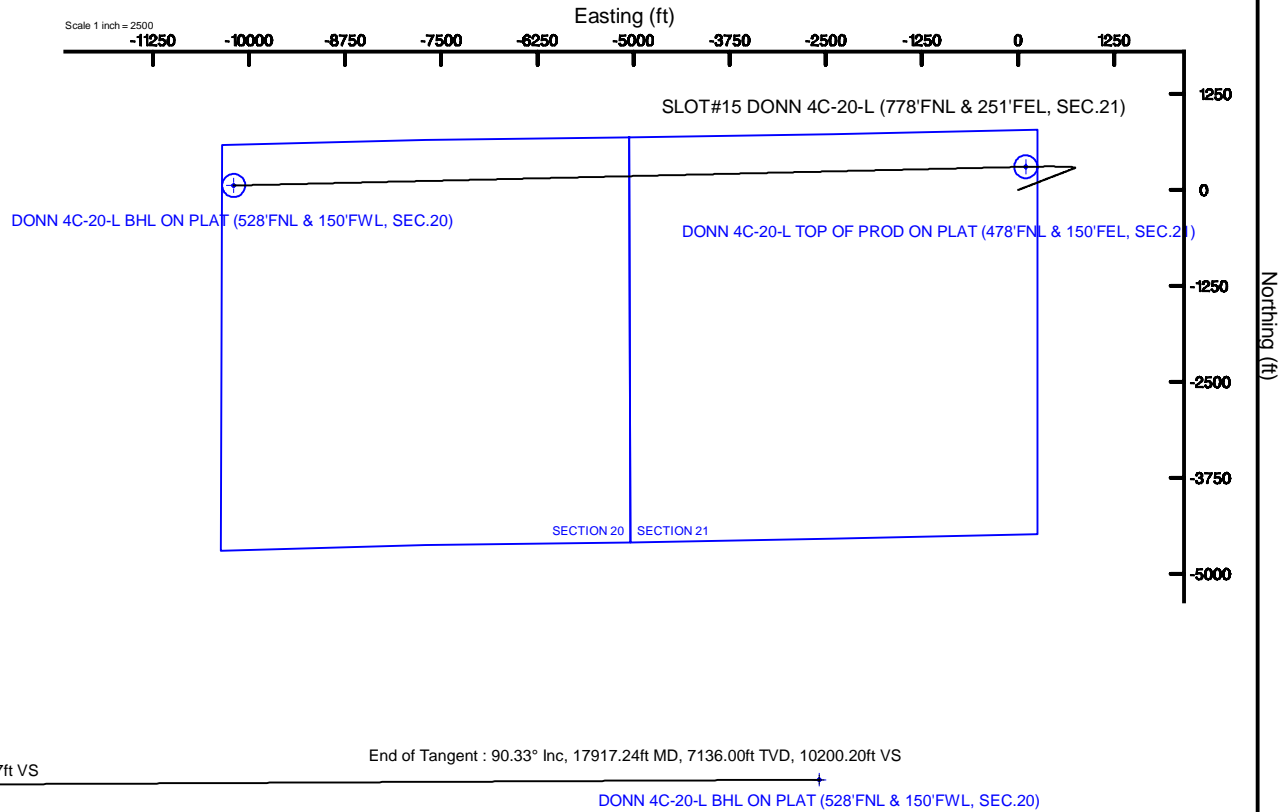
Name	MD (ft)	TVD (ft)	Local N (ft)	Local E (ft)	Grid East (US ft)	Grid North (US ft)	Latitude	Longitude
SEC.20-T06N-R66W		-1.00	40.07	0.28	3201887.93	1418212.16	40°28'44.854"N	104°46'27.336"W
SEC.21-T06N-R66W		38.00	-3842.73	-6166.36	3195753.51	1414279.17	40°28'06.478"N	104°47'47.123"W
DONN 4C-20-L BHL ON PLAT (528'FNL & 150'FWL, SEC.20)	17917.24	7136.00	58.58	-10200.04	3191688.19	1418147.19	40°28'45.016"N	104°48'39.334"W
DONN 4C-20-L TOP OF PROD ON PLAT (478'FNL & 150'FEL, SEC.21)	7613.44	7195.00	302.75	100.71	3201586.21	1418475.64	40°28'47.449"N	104°46'26.036"W

## Hole and Casing Sections

Name	Start MD (ft)	End MD (ft)	Interval (ft)	Start TVD (ft)	End TVD (ft)	Start Local N (ft)	Start Local E (ft)	End Local N (ft)	End Local E (ft)	Wellbore
13.5in Open Hole	25.00	1750.00	1725.00	25.00	1739.18	0.00	0.00	63.57	163.67	DONN 4C-20-L PWB
9.625in Casing Surface	25.00	1750.00	1725.00	25.00	1739.18	0.00	0.00	63.57	163.67	DONN 4C-20-L PWB
8.5in Open Hole	1750.00	17917.24	16167.24	1739.18	7136.00	63.57	163.67	58.58	-10200.03	DONN 4C-20-L PWB

## Well Profile Data

Design Comment	MD (ft)	Inc (°)	Az (°)	TVD (ft)	Local N (ft)	Local E (ft)	DLS (°/100ft)	VS (ft)
Tie On	25.00	0.000	68.772	25.00	0.00	0.00	0.00	0.00
End of Tangent	200.00	0.000	68.772	200.00	0.00	0.00	0.00	0.00
End of Build	569.36	7.387	68.772	568.34	8.61	22.16	2.00	-22.12
End of Tangent	6532.63	7.387	68.772	6482.11	286.22	736.87	0.00	-735.21
End of 3D Arc	7613.44	90.328	268.642	7195.00	302.75	100.71	9.00	-98.97
End of Tangent	17917.24	90.328	268.642	7136.00	58.58	-10200.04	0.00	10200.20





# Planned Wellpath Report

DONN 4C-20-L PWP (REV-A.0)

Page 1 of 9



## REFERENCE WELLPATH IDENTIFICATION

Operator	SRC ENERGY	Slot	SLOT#15 DONN 4C-20-L (778'FNL & 251'FEL, SEC.21)
Area	COLORADO	Well	DONN 4C-20-L
Field	WELD COUNTY (NAD83,TRUE NORTH)	Wellbore	DONN 4C-20-L PWB
Facility	SEC.21-T06N-R66W		

## REPORT SETUP INFORMATION

Projection System	NAD83 / Lambert Colorado SP, Northern Zone (501), US feet	Software System	WellArchitect® 5.1
North Reference	True	User	Doddanna
Scale	0.999965	Report Generated	8/22/2017 at 4:10:47 PM
Convergence at slot	0.47° East	Database/Source file	WA_Denver/DONN_4C-20-L_PWP_REV-A.0_.xml

## WELLPATH LOCATION

	Local coordinates		Grid coordinates		Geographic coordinates	
	North[ft]	East[ft]	Easting[US ft]	Northing[US ft]	Latitude	Longitude
Slot Location	1023.69	24.76	3201887.99	1418172.09	40°28'44.458"N	104°46'27.340"W
Facility Reference Pt			3201871.60	1417148.27	40°28'34.342"N	104°46'27.660"W
Field Reference Pt			3171284.48	1426358.81	40°30'07.643"N	104°53'02.634"W

## WELLPATH DATUM

Calculation method	Minimum curvature	PRECISION DRILLING (25') (RKB) to Facility Vertical Datum	4777.00ft
Horizontal Reference Pt	Slot	PRECISION DRILLING (25') (RKB) to Mean Sea Level	4777.00ft
Vertical Reference Pt	PRECISION DRILLING (25') (RKB)	PRECISION DRILLING (25') (RKB) to Mud Line at Slot (SLOT#15 DONN 4C-20-L (778'FNL & 251'FEL, SEC.21))	4777.00ft
MD Reference Pt	PRECISION DRILLING (25') (RKB)	Section Origin	N 0.00, E 0.00 ft
Field Vertical Reference	Mean Sea Level	Section Azimuth	270.33°



# Planned Wellpath Report

## DONN 4C-20-L PWP (REV-A.0)

Page 2 of 9



REFERENCE WELLPATH IDENTIFICATION			
Operator	SRC ENERGY	Slot	SLOT#15 DONN 4C-20-L (778'FNL & 251'FEL, SEC.21)
Area	COLORADO	Well	DONN 4C-20-L
Field	WELD COUNTY (NAD83,TRUE NORTH)	Wellbore	DONN 4C-20-L PWB
Facility	SEC.21-T06N-R66W		

### WELLPATH DATA (185 stations) † = interpolated/extrapolated station

MD [ft]	Inclination [°]	Azimuth [°]	TVD [ft]	Vert Sect [ft]	North [ft]	East [ft]	DLS [°/100ft]	Comments
0.00†	0.000	68.772	0.00	0.00	0.00	0.00	0.00	
25.00	0.000	68.772	25.00	0.00	0.00	0.00	0.00	Tie On
125.00†	0.000	68.772	125.00	0.00	0.00	0.00	0.00	
200.00	0.000	68.772	200.00	0.00	0.00	0.00	0.00	End of Tangent
225.00†	0.500	68.772	225.00	-0.10	0.04	0.10	2.00	
325.00†	2.500	68.772	324.96	-2.54	0.99	2.54	2.00	
425.00†	4.500	68.772	424.77	-8.21	3.20	8.23	2.00	
525.00†	6.500	68.772	524.30	-17.13	6.67	17.17	2.00	
569.36	7.387	68.772	568.34	-22.12	8.61	22.16	2.00	End of Build
625.00†	7.387	68.772	623.52	-28.77	11.20	28.83	0.00	
725.00†	7.387	68.772	722.69	-40.73	15.86	40.82	0.00	
825.00†	7.387	68.772	821.86	-52.68	20.51	52.80	0.00	
925.00†	7.387	68.772	921.03	-64.64	25.17	64.79	0.00	
1025.00†	7.387	68.772	1020.20	-76.60	29.82	76.77	0.00	
1125.00†	7.387	68.772	1119.37	-88.56	34.48	88.76	0.00	
1225.00†	7.387	68.772	1218.54	-100.52	39.13	100.74	0.00	
1325.00†	7.387	68.772	1317.71	-112.48	43.79	112.73	0.00	
1425.00†	7.387	68.772	1416.88	-124.43	48.44	124.71	0.00	
1525.00†	7.387	68.772	1516.05	-136.39	53.10	136.70	0.00	
1625.00†	7.387	68.772	1615.22	-148.35	57.75	148.68	0.00	
1725.00†	7.387	68.772	1714.39	-160.31	62.41	160.67	0.00	
1825.00†	7.387	68.772	1813.56	-172.27	67.06	172.65	0.00	
1925.00†	7.387	68.772	1912.73	-184.22	71.72	184.64	0.00	
2025.00†	7.387	68.772	2011.90	-196.18	76.37	196.62	0.00	
2125.00†	7.387	68.772	2111.07	-208.14	81.03	208.61	0.00	
2225.00†	7.387	68.772	2210.24	-220.10	85.69	220.59	0.00	
2325.00†	7.387	68.772	2309.41	-232.06	90.34	232.58	0.00	
2425.00†	7.387	68.772	2408.58	-244.01	95.00	244.56	0.00	
2525.00†	7.387	68.772	2507.75	-255.97	99.65	256.55	0.00	
2625.00†	7.387	68.772	2606.92	-267.93	104.31	268.53	0.00	



# Planned Wellpath Report

## DONN 4C-20-L PWP (REV-A.0)

Page 3 of 9



REFERENCE WELLPATH IDENTIFICATION			
Operator	SRC ENERGY	Slot	SLOT#15 DONN 4C-20-L (778'FNL & 251'FEL, SEC.21)
Area	COLORADO	Well	DONN 4C-20-L
Field	WELD COUNTY (NAD83,TRUE NORTH)	Wellbore	DONN 4C-20-L PWB
Facility	SEC.21-T06N-R66W		

WELLPATH DATA (185 stations) † = interpolated/extrapolated station								
MD [ft]	Inclination [°]	Azimuth [°]	TVD [ft]	Vert Sect [ft]	North [ft]	East [ft]	DLS [°/100ft]	Comments
2725.00†	7.387	68.772	2706.09	-279.89	108.96	280.52	0.00	
2825.00†	7.387	68.772	2805.26	-291.85	113.62	292.50	0.00	
2925.00†	7.387	68.772	2904.43	-303.81	118.27	304.49	0.00	
3025.00†	7.387	68.772	3003.60	-315.76	122.93	316.47	0.00	
3125.00†	7.387	68.772	3102.77	-327.72	127.58	328.46	0.00	
3225.00†	7.387	68.772	3201.94	-339.68	132.24	340.44	0.00	
3325.00†	7.387	68.772	3301.11	-351.64	136.89	352.43	0.00	
3425.00†	7.387	68.772	3400.28	-363.60	141.55	364.41	0.00	
3525.00†	7.387	68.772	3499.45	-375.55	146.21	376.40	0.00	
3625.00†	7.387	68.772	3598.62	-387.51	150.86	388.39	0.00	
3725.00†	7.387	68.772	3697.79	-399.47	155.52	400.37	0.00	
3825.00†	7.387	68.772	3796.96	-411.43	160.17	412.36	0.00	
3925.00†	7.387	68.772	3896.13	-423.39	164.83	424.34	0.00	
4025.00†	7.387	68.772	3995.30	-435.34	169.48	436.33	0.00	
4125.00†	7.387	68.772	4094.47	-447.30	174.14	448.31	0.00	
4225.00†	7.387	68.772	4193.64	-459.26	178.79	460.30	0.00	
4325.00†	7.387	68.772	4292.81	-471.22	183.45	472.28	0.00	
4425.00†	7.387	68.772	4391.98	-483.18	188.10	484.27	0.00	
4525.00†	7.387	68.772	4491.15	-495.14	192.76	496.25	0.00	
4625.00†	7.387	68.772	4590.32	-507.09	197.41	508.24	0.00	
4725.00†	7.387	68.772	4689.49	-519.05	202.07	520.22	0.00	
4825.00†	7.387	68.772	4788.66	-531.01	206.73	532.21	0.00	
4925.00†	7.387	68.772	4887.83	-542.97	211.38	544.19	0.00	
5025.00†	7.387	68.772	4987.00	-554.93	216.04	556.18	0.00	
5125.00†	7.387	68.772	5086.17	-566.88	220.69	568.16	0.00	
5225.00†	7.387	68.772	5185.33	-578.84	225.35	580.15	0.00	
5325.00†	7.387	68.772	5284.50	-590.80	230.00	592.13	0.00	
5425.00†	7.387	68.772	5383.67	-602.76	234.66	604.12	0.00	
5525.00†	7.387	68.772	5482.84	-614.72	239.31	616.10	0.00	
5625.00†	7.387	68.772	5582.01	-626.67	243.97	628.09	0.00	



# Planned Wellpath Report

DONN 4C-20-L PWP (REV-A.0)  
Page 4 of 9



REFERENCE WELLPATH IDENTIFICATION			
Operator	SRC ENERGY	Slot	SLOT#15 DONN 4C-20-L (778'FNL & 251'FEL, SEC.21)
Area	COLORADO	Well	DONN 4C-20-L
Field	WELD COUNTY (NAD83, TRUE NORTH)	Wellbore	DONN 4C-20-L PWB
Facility	SEC.21-T06N-R66W		

WELLPATH DATA (185 stations) † = interpolated/extrapolated station								
MD [ft]	Inclination [°]	Azimuth [°]	TVD [ft]	Vert Sect [ft]	North [ft]	East [ft]	DLS [°/100ft]	Comments
5725.00†	7.387	68.772	5681.18	-638.63	248.62	640.07	0.00	
5825.00†	7.387	68.772	5780.35	-650.59	253.28	652.06	0.00	
5925.00†	7.387	68.772	5879.52	-662.55	257.93	664.04	0.00	
6025.00†	7.387	68.772	5978.69	-674.51	262.59	676.03	0.00	
6125.00†	7.387	68.772	6077.86	-686.47	267.25	688.01	0.00	
6225.00†	7.387	68.772	6177.03	-698.42	271.90	700.00	0.00	
6325.00†	7.387	68.772	6276.20	-710.38	276.56	711.98	0.00	
6425.00†	7.387	68.772	6375.37	-722.34	281.21	723.97	0.00	
6525.00†	7.387	68.772	6474.54	-734.30	285.87	735.95	0.00	
6532.63	7.387	68.772	6482.11	-735.21	286.22	736.87	0.00	End of Tangent
6625.00†	2.872	330.181	6574.20	-739.58	290.39	741.26	9.00	
6725.00†	10.669	282.194	6673.48	-729.24	294.52	730.94	9.00	
6825.00†	19.526	275.799	6769.94	-703.49	298.18	705.22	9.00	
6925.00†	28.472	273.321	6861.20	-662.97	301.25	664.71	9.00	
7025.00†	37.442	271.958	6945.03	-608.67	303.68	610.42	9.00	
7125.00†	46.422	271.061	7019.34	-541.93	305.39	543.69	9.00	
7225.00†	55.407	270.399	7082.33	-464.39	306.35	466.16	9.00	
7325.00†	64.396	269.867	7132.43	-377.96	306.53	379.73	9.00	
7425.00†	73.385	269.411	7168.40	-284.78	305.93	286.54	9.00	
7525.00†	82.376	268.995	7189.38	-187.12	304.57	188.88	9.00	
7613.44	90.328	268.642	7195.00†	-98.97	302.75	100.71	9.00	End of 3D Arc
7625.00†	90.328	268.642	7194.93	-87.41	302.47	89.15	0.00	
7725.00†	90.328	268.642	7194.36	12.54	300.10	-10.82	0.00	
7825.00†	90.328	268.642	7193.79	112.50	297.73	-110.79	0.00	
7925.00†	90.328	268.642	7193.22	212.45	295.36	-210.76	0.00	
8025.00†	90.328	268.642	7192.64	312.41	292.99	-310.73	0.00	
8125.00†	90.328	268.642	7192.07	412.36	290.63	-410.70	0.00	
8225.00†	90.328	268.642	7191.50	512.32	288.26	-510.67	0.00	
8325.00†	90.328	268.642	7190.93	612.27	285.89	-610.64	0.00	
8425.00†	90.328	268.642	7190.35	712.23	283.52	-710.61	0.00	



# Planned Wellpath Report

## DONN 4C-20-L PWP (REV-A.0)

Page 5 of 9



REFERENCE WELLPATH IDENTIFICATION			
Operator	SRC ENERGY	Slot	SLOT#15 DONN 4C-20-L (778'FNL & 251'FEL, SEC.21)
Area	COLORADO	Well	DONN 4C-20-L
Field	WELD COUNTY (NAD83, TRUE NORTH)	Wellbore	DONN 4C-20-L PWB
Facility	SEC.21-T06N-R66W		

WELLPATH DATA (185 stations) † = interpolated/extrapolated station								
MD [ft]	Inclination [°]	Azimuth [°]	TVD [ft]	Vert Sect [ft]	North [ft]	East [ft]	DLS [°/100ft]	Comments
8525.00†	90.328	268.642	7189.78	812.18	281.15	-810.58	0.00	
8625.00†	90.328	268.642	7189.21	912.14	278.78	-910.55	0.00	
8725.00†	90.328	268.642	7188.64	1012.09	276.41	-1010.52	0.00	
8825.00†	90.328	268.642	7188.06	1112.05	274.04	-1110.49	0.00	
8925.00†	90.328	268.642	7187.49	1212.00	271.67	-1210.46	0.00	
9025.00†	90.328	268.642	7186.92	1311.96	269.30	-1310.44	0.00	
9125.00†	90.328	268.642	7186.34	1411.91	266.93	-1410.41	0.00	
9225.00†	90.328	268.642	7185.77	1511.87	264.56	-1510.38	0.00	
9325.00†	90.328	268.642	7185.20	1611.83	262.19	-1610.35	0.00	
9425.00†	90.328	268.642	7184.63	1711.78	259.82	-1710.32	0.00	
9525.00†	90.328	268.642	7184.05	1811.74	257.45	-1810.29	0.00	
9625.00†	90.328	268.642	7183.48	1911.69	255.08	-1910.26	0.00	
9725.00†	90.328	268.642	7182.91	2011.65	252.71	-2010.23	0.00	
9825.00†	90.328	268.642	7182.34	2111.60	250.34	-2110.20	0.00	
9925.00†	90.328	268.642	7181.76	2211.56	247.97	-2210.17	0.00	
10025.00†	90.328	268.642	7181.19	2311.51	245.60	-2310.14	0.00	
10125.00†	90.328	268.642	7180.62	2411.47	243.23	-2410.11	0.00	
10225.00†	90.328	268.642	7180.05	2511.42	240.86	-2510.08	0.00	
10325.00†	90.328	268.642	7179.47	2611.38	238.49	-2610.05	0.00	
10425.00†	90.328	268.642	7178.90	2711.33	236.12	-2710.02	0.00	
10525.00†	90.328	268.642	7178.33	2811.29	233.75	-2809.99	0.00	
10625.00†	90.328	268.642	7177.76	2911.24	231.38	-2909.96	0.00	
10725.00†	90.328	268.642	7177.18	3011.20	229.01	-3009.93	0.00	
10825.00†	90.328	268.642	7176.61	3111.15	226.64	-3109.90	0.00	
10925.00†	90.328	268.642	7176.04	3211.11	224.27	-3209.87	0.00	
11025.00†	90.328	268.642	7175.47	3311.06	221.90	-3309.84	0.00	
11125.00†	90.328	268.642	7174.89	3411.02	219.53	-3409.81	0.00	
11225.00†	90.328	268.642	7174.32	3510.97	217.16	-3509.78	0.00	
11325.00†	90.328	268.642	7173.75	3610.93	214.79	-3609.75	0.00	
11425.00†	90.328	268.642	7173.17	3710.88	212.42	-3709.72	0.00	



# Planned Wellpath Report

## DONN 4C-20-L PWP (REV-A.0)

Page 6 of 9



REFERENCE WELLPATH IDENTIFICATION			
Operator	SRC ENERGY	Slot	SLOT#15 DONN 4C-20-L (778'FNL & 251'FEL, SEC.21)
Area	COLORADO	Well	DONN 4C-20-L
Field	WELD COUNTY (NAD83, TRUE NORTH)	Wellbore	DONN 4C-20-L PWB
Facility	SEC.21-T06N-R66W		

WELLPATH DATA (185 stations) † = interpolated/extrapolated station								
MD [ft]	Inclination [°]	Azimuth [°]	TVD [ft]	Vert Sect [ft]	North [ft]	East [ft]	DLS [°/100ft]	Comments
11525.00†	90.328	268.642	7172.60	3810.84	210.06	-3809.69	0.00	
11625.00†	90.328	268.642	7172.03	3910.79	207.69	-3909.66	0.00	
11725.00†	90.328	268.642	7171.46	4010.75	205.32	-4009.63	0.00	
11825.00†	90.328	268.642	7170.88	4110.70	202.95	-4109.60	0.00	
11925.00†	90.328	268.642	7170.31	4210.66	200.58	-4209.57	0.00	
12025.00†	90.328	268.642	7169.74	4310.61	198.21	-4309.54	0.00	
12125.00†	90.328	268.642	7169.17	4410.57	195.84	-4409.51	0.00	
12225.00†	90.328	268.642	7168.59	4510.52	193.47	-4509.48	0.00	
12325.00†	90.328	268.642	7168.02	4610.48	191.10	-4609.45	0.00	
12425.00†	90.328	268.642	7167.45	4710.43	188.73	-4709.42	0.00	
12525.00†	90.328	268.642	7166.88	4810.39	186.36	-4809.39	0.00	
12625.00†	90.328	268.642	7166.30	4910.34	183.99	-4909.37	0.00	
12725.00†	90.328	268.642	7165.73	5010.30	181.62	-5009.34	0.00	
12825.00†	90.328	268.642	7165.16	5110.25	179.25	-5109.31	0.00	
12925.00†	90.328	268.642	7164.59	5210.21	176.88	-5209.28	0.00	
13025.00†	90.328	268.642	7164.01	5310.16	174.51	-5309.25	0.00	
13125.00†	90.328	268.642	7163.44	5410.12	172.14	-5409.22	0.00	
13225.00†	90.328	268.642	7162.87	5510.07	169.77	-5509.19	0.00	
13325.00†	90.328	268.642	7162.30	5610.03	167.40	-5609.16	0.00	
13425.00†	90.328	268.642	7161.72	5709.98	165.03	-5709.13	0.00	
13525.00†	90.328	268.642	7161.15	5809.94	162.66	-5809.10	0.00	
13625.00†	90.328	268.642	7160.58	5909.89	160.29	-5909.07	0.00	
13725.00†	90.328	268.642	7160.00	6009.85	157.92	-6009.04	0.00	
13825.00†	90.328	268.642	7159.43	6109.80	155.55	-6109.01	0.00	
13925.00†	90.328	268.642	7158.86	6209.76	153.18	-6208.98	0.00	
14025.00†	90.328	268.642	7158.29	6309.71	150.81	-6308.95	0.00	
14125.00†	90.328	268.642	7157.71	6409.67	148.44	-6408.92	0.00	
14225.00†	90.328	268.642	7157.14	6509.62	146.07	-6508.89	0.00	
14325.00†	90.328	268.642	7156.57	6609.58	143.70	-6608.86	0.00	
14425.00†	90.328	268.642	7156.00	6709.53	141.33	-6708.83	0.00	





# Planned Wellpath Report

DONN 4C-20-L PWP (REV-A.0)  
Page 7 of 9



REFERENCE WELLPATH IDENTIFICATION			
Operator	SRC ENERGY	Slot	SLOT#15 DONN 4C-20-L (778'FNL & 251'FEL, SEC.21)
Area	COLORADO	Well	DONN 4C-20-L
Field	WELD COUNTY (NAD83,TRUE NORTH)	Wellbore	DONN 4C-20-L PWB
Facility	SEC.21-T06N-R66W		

WELLPATH DATA (185 stations) † = interpolated/extrapolated station								
MD [ft]	Inclination [°]	Azimuth [°]	TVD [ft]	Vert Sect [ft]	North [ft]	East [ft]	DLS [°/100ft]	Comments
14525.00†	90.328	268.642	7155.42	6809.49	138.96	-6808.80	0.00	
14625.00†	90.328	268.642	7154.85	6909.44	136.59	-6908.77	0.00	
14725.00†	90.328	268.642	7154.28	7009.40	134.22	-7008.74	0.00	
14825.00†	90.328	268.642	7153.71	7109.35	131.85	-7108.71	0.00	
14925.00†	90.328	268.642	7153.13	7209.31	129.49	-7208.68	0.00	
15025.00†	90.328	268.642	7152.56	7309.26	127.12	-7308.65	0.00	
15125.00†	90.328	268.642	7151.99	7409.22	124.75	-7408.62	0.00	
15225.00†	90.328	268.642	7151.42	7509.17	122.38	-7508.59	0.00	
15325.00†	90.328	268.642	7150.84	7609.13	120.01	-7608.56	0.00	
15425.00†	90.328	268.642	7150.27	7709.08	117.64	-7708.53	0.00	
15525.00†	90.328	268.642	7149.70	7809.04	115.27	-7808.50	0.00	
15625.00†	90.328	268.642	7149.13	7908.99	112.90	-7908.47	0.00	
15725.00†	90.328	268.642	7148.55	8008.95	110.53	-8008.44	0.00	
15825.00†	90.328	268.642	7147.98	8108.90	108.16	-8108.41	0.00	
15925.00†	90.328	268.642	7147.41	8208.86	105.79	-8208.38	0.00	
16025.00†	90.328	268.642	7146.84	8308.81	103.42	-8308.35	0.00	
16125.00†	90.328	268.642	7146.26	8408.77	101.05	-8408.32	0.00	
16225.00†	90.328	268.642	7145.69	8508.72	98.68	-8508.30	0.00	
16325.00†	90.328	268.642	7145.12	8608.68	96.31	-8608.27	0.00	
16425.00†	90.328	268.642	7144.54	8708.63	93.94	-8708.24	0.00	
16525.00†	90.328	268.642	7143.97	8808.59	91.57	-8808.21	0.00	
16625.00†	90.328	268.642	7143.40	8908.54	89.20	-8908.18	0.00	
16725.00†	90.328	268.642	7142.83	9008.50	86.83	-9008.15	0.00	
16825.00†	90.328	268.642	7142.25	9108.45	84.46	-9108.12	0.00	
16925.00†	90.328	268.642	7141.68	9208.41	82.09	-9208.09	0.00	
17025.00†	90.328	268.642	7141.11	9308.36	79.72	-9308.06	0.00	
17125.00†	90.328	268.642	7140.54	9408.32	77.35	-9408.03	0.00	
17225.00†	90.328	268.642	7139.96	9508.27	74.98	-9508.00	0.00	
17325.00†	90.328	268.642	7139.39	9608.23	72.61	-9607.97	0.00	
17425.00†	90.328	268.642	7138.82	9708.18	70.24	-9707.94	0.00	





# Planned Wellpath Report

## DONN 4C-20-L PWP (REV-A.0)

Page 8 of 9



REFERENCE WELLPATH IDENTIFICATION			
Operator	SRC ENERGY	Slot	SLOT#15 DONN 4C-20-L (778'FNL & 251'FEL, SEC.21)
Area	COLORADO	Well	DONN 4C-20-L
Field	WELD COUNTY (NAD83,TRUE NORTH)	Wellbore	DONN 4C-20-L PWB
Facility	SEC.21-T06N-R66W		

WELLPATH DATA (185 stations) † = interpolated/extrapolated station								
MD [ft]	Inclination [°]	Azimuth [°]	TVD [ft]	Vert Sect [ft]	North [ft]	East [ft]	DLS [°/100ft]	Comments
17525.00†	90.328	268.642	7138.25	9808.14	67.87	-9807.91	0.00	
17625.00†	90.328	268.642	7137.67	9908.09	65.50	-9907.88	0.00	
17725.00†	90.328	268.642	7137.10	10008.05	63.13	-10007.85	0.00	
17825.00†	90.328	268.642	7136.53	10108.00	60.76	-10107.82	0.00	
17917.24	90.328	268.642	7136.00 <sup>2</sup>	10200.20	58.58	-10200.04	0.00	End of Tangent

HOLE & CASING SECTIONS - Ref Wellbore: DONN 4C-20-L PWB Ref Wellpath: DONN 4C-20-L PWP (REV-A.0)									
String/Diameter	Start MD [ft]	End MD [ft]	Interval [ft]	Start TVD [ft]	End TVD [ft]	Start N/S [ft]	Start E/W [ft]	End N/S [ft]	End E/W [ft]
13.5in Open Hole	25.00	1750.00	1725.00	25.00	1739.18	0.00	0.00	63.57	163.67
9.625in Casing Surface	25.00	1750.00	1725.00	25.00	1739.18	0.00	0.00	63.57	163.67
8.5in Open Hole	1750.00	17917.24	16167.24	1739.18	7136.00	63.57	163.67	58.58	-10200.03

TARGETS									
Name	MD [ft]	TVD [ft]	North [ft]	East [ft]	Grid East [US ft]	Grid North [US ft]	Latitude	Longitude	Shape
SEC.20-T06N-R66W		-1.00	40.07	0.28	3201887.93	1418212.16	40°28'44.854"N	104°46'27.336"W	polygon
SEC.21-T06N-R66W		39.00	-3842.73	-6166.36	3195753.51	1414279.17	40°28'06.478"N	104°47'47.123"W	polygon
2) DONN 4C-20-L BHL ON PLAT (528'FNL & 150'FWL, SEC.20)	17917.24	7136.00	58.58	-10200.04	3191688.19	1418147.19	40°28'45.016"N	104°48'39.334"W	circle
1) DONN 4C-20-L TOP OF PROD ON PLAT (478'FNL & 150'FEL, SEC.21)	7613.44	7195.00	302.75	100.71	3201986.21	1418475.64	40°28'47.449"N	104°46'26.036"W	circle



# Planned Wellpath Report

## DONN 4C-20-L PWP (REV-A.0)

Page 9 of 9



REFERENCE WELLPATH IDENTIFICATION			
Operator	SRC ENERGY	Slot	SLOT#15 DONN 4C-20-L (778'FNL & 251'FEL, SEC.21)
Area	COLORADO	Well	DONN 4C-20-L
Field	WELD COUNTY (NAD83,TRUE NORTH)	Wellbore	DONN 4C-20-L PWB
Facility	SEC.21-T06N-R66W		

SURVEY PROGRAM - Ref Wellbore: DONN 4C-20-L PWB    Ref Wellpath: DONN 4C-20-L PWP (REV-A.0)				
Start MD [ft]	End MD [ft]	Positional Uncertainty Model	Log Name/Comment	Wellbore
25.00	1750.00	Custom BHI NaviTrak (Standard Rotating+Axial Corr) (Rockies 0.03Gt model)		DONN 4C-20-L PWB
1750.00	17917.24	Custom BHI AutoTrak Curve (IFR1, Short) (Rockies 0.03Gt model)		DONN 4C-20-L PWB