

Location:	COLORADO	Slot:	SLOT#25 DONN 32C-20-L (978'FNL & 252'FEL, SEC.21)
Field:	WELD COUNTY (NAD83,TRUE NORTH)	Well:	DONN 32C-20-L
Facility:	SEC.21-T06N-R66W	Wellbore:	DONN 32C-20-L PWB

Location:	COLORADO	Slot:	SLOT#25 DONN 32C-20-L (978'FNL & 252'FEL, SEC.21)
Field:	WELD COUNTY (NAD83,TRUE NORTH)	Well:	DONN 32C-20-L
Facility:	SEC.21-T06N-R66W	Wellbore:	DONN 32C-20-L PWB

True vertical depths are referenced to PRECISION DRILLING (25') (RKB)

Measured depths are referenced to PRECISION DRILLING (25') (RKB)

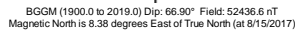
PRECISION DRILLING (25') (RKB) to Mean Sea Level: 4776 feet

<p>1. 姓名: _____</p> <p>2. 性别: _____</p> <p>3. 年龄: _____</p> <p>4. 职业: _____</p> <p>5. 住址: _____</p> <p>6. 联系电话: _____</p> <p>7. 电子邮箱: _____</p> <p>8. 身份证号: _____</p> <p>9. 学历: _____</p> <p>10. 婚姻状况: _____</p> <p>11. 健康状况: _____</p> <p>12. 其他: _____</p>	<p>1. 姓名: _____</p> <p>2. 性别: _____</p> <p>3. 年龄: _____</p> <p>4. 职业: _____</p> <p>5. 住址: _____</p> <p>6. 联系电话: _____</p> <p>7. 电子邮箱: _____</p> <p>8. 身份证号: _____</p> <p>9. 学历: _____</p> <p>10. 婚姻状况: _____</p> <p>11. 健康状况: _____</p> <p>12. 其他: _____</p>
--	--

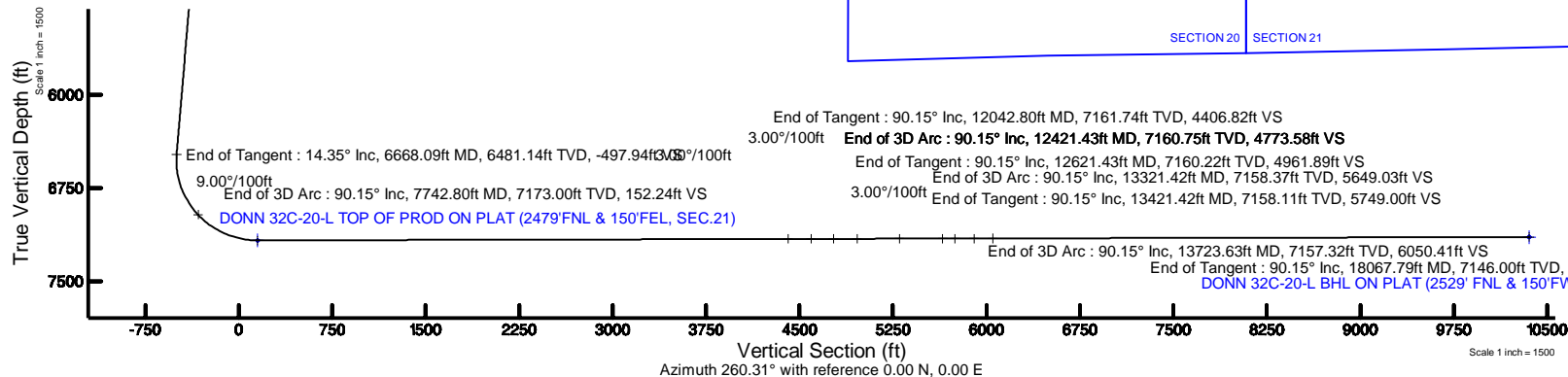
[illegible]

Facility Name				Grid East (US ft)	Grid North (US ft)	Latitude	Longitude
SEC.21-TD0N-R66W				3201871.604	1417148.268	40°28'34.342"N	104°46'27.660"W
Slot	Local N (ft)	Local E (ft)	Grid East (US ft)	Grid North (US ft)	Latitude	Longitude	
SLOT#25 DONN 32C-20-L (978FNL & 252FEL, SEC.21)	823.68	23.37	3201888.231	1417972.081	40°28'42.481"N	104°46'27.358"W	
PRECISION DRILLING (25) (RKB) to Mud line (At Slot: SLOT#25 DONN 32C-20-L (978FNL & 252FEL, SEC.21))						4776R	
Mean Sea Level to Mud line (At Slot: SLOT#25 DONN 32C-20-L (978FNL & 252FEL, SEC.21))						0R	
PRECISION DRILLING (25) (RKB) to Mean Sea Level						4776R	

Start MD (ft)	End MD (ft)	Tool	Model	Log Name/Comment	Wellbore
25.00	1750.00	BHI NavTrak	Custom BHI NavTrak (Standard Rotating-Axial Corr) (Rockies 0.03GI model)		DDNN 32C-20-L, PWB
1750.00	18067.79	BHI AutoTrak Curve	Custom BHI AutoTrak Curve (Short) (Rockies 0.03GI model)		DDNN 32C-20-L, PWB



To correct azimuth from Magnetic to True add 8.38 degrees



Name	MD (ft)	TVD (ft)	Local N (ft)	Local E (ft)	Grid East (US ft)	Grid North (US ft)	Latitude	Longitude
SEC.2D-T06N-R66W		-2.00	240.08	1.67	3201887.93	1418212.16	40°28'44.854"N	104°46'27.336"W
SEC.21-T06N-R66W			-3642.72	-6164.97	3195753.51	1414279.17	40°28'06.478"N	104°47'47.123"W
DOWN 32C-2dL BHL ON PLAT (2529 FNL & 150FWL SEC.2D)	18067.79	7146.00	-1743.33	-10206.99	3191696.23	1416145.34	40°28'25.234"N	104°46'38.431"W
DOWN 32C-2dL TOP OF PROD ON PLAT (2479 FNL & 150FWL SEC.21)	7742.80	7173.00	-1498.80	101.55	3200002.04	1416474.22	40°28'27.671"N	104°46'26.064"W

Name	Start MD (ft)	End MD (ft)	Interval (ft)	Start TVD (ft)	End TVD (ft)	Start Local N (ft)	Start Local E (ft)	End Local N (ft)	End Local E (ft)	Wellbore
13.5in Open Hole	25.00	1750.00	1725.00	25.00	1716.54	0.00	0.00	-258.95	142.85	DDNN 32C-20-L PWB
9.625in Casing Surface	25.00	1750.00	1725.00	25.00	1716.54	0.00	0.00	-258.95	142.85	DDNN 32C-20-L PWB
8.5in Open Hole	1750.00	18067.79	16317.79	1716.54	7146.00	-258.95	142.85	-1743.33	-10206.98	DDNN 32C-20-L PWB

Design Comment	MD (ft)	Inc (°)	Az (°)	TVD (ft)	Local N (ft)	Local E (ft)	DLS (°/100ft)	VS (ft)
Tie On	25.00	0.000	151.117	25.00	0.00	0.00	0.00	0.00
End of Tangent	200.00	0.000	151.117	200.00	0.00	0.00	0.00	0.00
End of Build	917.60	14.352	151.117	910.12	-78.29	43.19	2.00	-29.39
End of Tangent	6668.09	14.352	151.117	6481.14	-1326.39	731.69	0.00	-497.94
End of 3D Arc	7742.80	90.150	268.641	7173.00	-1498.80	101.55	9.00	152.24
End of Tangent	12042.80	90.150	268.641	7161.74	-1600.78	-4197.23	0.00	4406.82
End of 3D Arc	12421.43	90.150	280.000	7160.75	-1572.30	-4574.16	3.00	4773.58
End of Tangent	12621.43	90.150	280.000	7160.22	-1537.57	-4771.12	0.00	4961.89
End of 3D Arc	13321.42	90.150	259.000	7158.37	-1543.65	-5467.18	3.00	5649.03
End of Tangent	13421.42	90.150	259.000	7158.11	-1562.73	-5565.34	0.00	5749.00
End of 3D Arc	13723.63	90.149	268.066	7157.32	-1596.73	-5865.31	3.00	6050.41
End of Tangent	18067.79	90.149	268.066	7146.00	-1743.33	-10206.99	0.00	10354.79

~VERSION INFORMATION

VERS. 2.0 : CWLS LOG ASCII STANDARD-VERSION 2.0

WRAP. NO : ASCII DATA SECTION CONTAINS ONE ROW PER WELLPATH STATION

~WELL INFORMATION

#MNEM	.UNITS	DATA	:DESCRIPTION
#----	.-----	----	:-----
STRT	.ft	0.00	:START MD
STOP	.ft	18067.79	:STOP MD
STEP	.ft	0.0	:STEP (non-uniform increment)
NULL	.	-999.99	:NULL
COMP	.	SRC ENERGY	:OPERATOR
WELL	.	DONN 32C-20-L	:WELL
FLD	.	WELD COUNTY (NAD83,TRUE NORTH)	:FIELD
LOC	.	COLORADO	:AREA (aka: Location)
CNTY	.	N/A	:COUNTY
STAT	.	N/A	:STATE
CTRY	.	N/A	:COUNTRY
SRVC	.	Baker Hughes	:CONTRACTOR
DATE	.	08/18/2017	:LOG REV DATE
API	.		:API NUMBER

~OTHER INFORMATION

#Software: WellArchitect(R) Version 5.1

#MNEM	.UNITS	DATA	:DESCRIPTION
#----	.-----	----	:-----
WPTYPE	.	PLANNED WELLPATH	:WELLPATH TYPE
FACILITY	.	SEC.21-T06N-R66W	:FACILITY
SLOT	.	SLOT#25 DONN 32C-20-L (978'FNL & 252'FEL, SEC.21)	:SLOT
WELLBORE	.	DONN 32C-20-L PWB	:WELLBORE
WELLPATH	.	DONN 32C-20-L PWP (REV-B.0)	:WELLPATH
MDREFPT	.	PRECISION DRILLING (25') (RKB)	:MD REFERENCE POINT
TVDREFPT	.	PRECISION DRILLING (25') (RKB)	:TVD REFERENCE POINT
LCLREFPT	.	Slot	:LOCAL COORDINATE
REFERENCE PT			
VSAZIMUTH.deg		260.31	:VERTICAL SECTION
AZIMUTH			
VSORIGN .ft		0.00	:VERTICAL SECTION
ORIGIN NORTH			
VSORIGE .ft		0.00	:VERTICAL SECTION
ORIGIN EAST			

~CURVE (WELLPATH) INFORMATION

#MNEM	.UNITS	:DESCRIPTION
#----	.-----	:-----
DEPT	.ft	:MEASURED DEPTH
INC	.deg	:INCLINATION
AZI	.deg	:AZIMUTH
TVD	.ft	:TRUE VERTICAL DEPTH
SECT	.ft	:CROSS SECTION (CURTAIN/VERTICAL)
LOCALN	.ft	:LOCAL NORTH

DONN_32C-20-L_PWP__REV-B.0_.las

LOCALE .ft :LOCAL EAST
LAT .deg :LATITUDE
LONG .deg :LONGITUDE
DLS .deg/100ft :DOGLEG SEVERITY

~ASCII DATA

0.00	0.00	151.12	0.00	0.00	0.00	0.00	40.4784670
-104.7742660	0.00						
25.00	0.00	151.12	25.00	0.00	0.00	0.00	40.4784670
-104.7742660	0.00						
125.00	0.00	151.12	125.00	0.00	0.00	0.00	40.4784670
-104.7742660	0.00						
200.00	0.00	151.12	200.00	0.00	0.00	0.00	40.4784670
-104.7742660	0.00						
225.00	0.50	151.12	225.00	-0.04	-0.10	0.05	40.4784667
-104.7742658	2.00						
325.00	2.50	151.12	324.96	-0.90	-2.39	1.32	40.4784604
-104.7742613	2.00						
425.00	4.50	151.12	424.77	-2.90	-7.73	4.27	40.4784458
-104.7742507	2.00						
525.00	6.50	151.12	524.30	-6.05	-16.12	8.89	40.4784227
-104.7742340	2.00						
625.00	8.50	151.12	623.44	-10.34	-27.55	15.20	40.4783914
-104.7742114	2.00						
725.00	10.50	151.12	722.07	-15.77	-42.00	23.17	40.4783517
-104.7741827	2.00						
825.00	12.50	151.12	820.05	-22.32	-59.46	32.80	40.4783038
-104.7741481	2.00						
917.60	14.35	151.12	910.12	-29.39	-78.29	43.19	40.4782521
-104.7741108	2.00						
925.00	14.35	151.12	917.29	-29.99	-79.89	44.07	40.4782477
-104.7741076	0.00						
1025.00	14.35	151.12	1014.17	-38.14	-101.60	56.04	40.4781881
-104.7740645	0.00						
1125.00	14.35	151.12	1111.05	-46.29	-123.30	68.02	40.4781286
-104.7740215	0.00						
1225.00	14.35	151.12	1207.93	-54.44	-145.00	79.99	40.4780690
-104.7739785	0.00						
1325.00	14.35	151.12	1304.80	-62.58	-166.71	91.96	40.4780094
-104.7739354	0.00						
1425.00	14.35	151.12	1401.68	-70.73	-188.41	103.94	40.4779498
-104.7738924	0.00						
1525.00	14.35	151.12	1498.56	-78.88	-210.12	115.91	40.4778903
-104.7738494	0.00						
1625.00	14.35	151.12	1595.44	-87.03	-231.82	127.88	40.4778307
-104.7738063	0.00						
1725.00	14.35	151.12	1692.32	-95.18	-253.53	139.86	40.4777711
-104.7737633	0.00						
1825.00	14.35	151.12	1789.20	-103.32	-275.23	151.83	40.4777115
-104.7737203	0.00						
1925.00	14.35	151.12	1886.08	-111.47	-296.94	163.80	40.4776520
-104.7736772	0.00						

DONN_32C-20-L_PWP__REV-B.0_.las

2025.00	14.35	151.12	1982.96	-119.62	-318.64	175.77	40.4775924
-104.7736342	0.00						
2125.00	14.35	151.12	2079.84	-127.77	-340.34	187.75	40.4775328
-104.7735911	0.00						
2225.00	14.35	151.12	2176.72	-135.92	-362.05	199.72	40.4774732
-104.7735481	0.00						
2325.00	14.35	151.12	2273.60	-144.06	-383.75	211.69	40.4774136
-104.7735051	0.00						
2425.00	14.35	151.12	2370.48	-152.21	-405.46	223.67	40.4773541
-104.7734620	0.00						
2525.00	14.35	151.12	2467.35	-160.36	-427.16	235.64	40.4772945
-104.7734190	0.00						
2625.00	14.35	151.12	2564.23	-168.51	-448.87	247.61	40.4772349
-104.7733760	0.00						
2725.00	14.35	151.12	2661.11	-176.65	-470.57	259.59	40.4771753
-104.7733329	0.00						
2825.00	14.35	151.12	2757.99	-184.80	-492.28	271.56	40.4771158
-104.7732899	0.00						
2925.00	14.35	151.12	2854.87	-192.95	-513.98	283.53	40.4770562
-104.7732469	0.00						
3025.00	14.35	151.12	2951.75	-201.10	-535.68	295.50	40.4769966
-104.7732038	0.00						
3125.00	14.35	151.12	3048.63	-209.25	-557.39	307.48	40.4769370
-104.7731608	0.00						
3225.00	14.35	151.12	3145.51	-217.39	-579.09	319.45	40.4768775
-104.7731177	0.00						
3325.00	14.35	151.12	3242.39	-225.54	-600.80	331.42	40.4768179
-104.7730747	0.00						
3425.00	14.35	151.12	3339.27	-233.69	-622.50	343.40	40.4767583
-104.7730317	0.00						
3525.00	14.35	151.12	3436.15	-241.84	-644.21	355.37	40.4766987
-104.7729886	0.00						
3625.00	14.35	151.12	3533.02	-249.99	-665.91	367.34	40.4766392
-104.7729456	0.00						
3725.00	14.35	151.12	3629.90	-258.13	-687.62	379.32	40.4765796
-104.7729026	0.00						
3825.00	14.35	151.12	3726.78	-266.28	-709.32	391.29	40.4765200
-104.7728595	0.00						
3925.00	14.35	151.12	3823.66	-274.43	-731.02	403.26	40.4764604
-104.7728165	0.00						
4025.00	14.35	151.12	3920.54	-282.58	-752.73	415.23	40.4764009
-104.7727735	0.00						
4125.00	14.35	151.12	4017.42	-290.73	-774.43	427.21	40.4763413
-104.7727304	0.00						
4225.00	14.35	151.12	4114.30	-298.87	-796.14	439.18	40.4762817
-104.7726874	0.00						
4325.00	14.35	151.12	4211.18	-307.02	-817.84	451.15	40.4762221
-104.7726444	0.00						
4425.00	14.35	151.12	4308.06	-315.17	-839.55	463.13	40.4761625
-104.7726013	0.00						
4525.00	14.35	151.12	4404.94	-323.32	-861.25	475.10	40.4761030
-104.7725583	0.00						

DONN_32C-20-L_PWP__REV-B.0_.las

4625.00	14.35	151.12	4501.82	-331.47	-882.95	487.07	40.4760434
-104.7725153	0.00						
4725.00	14.35	151.12	4598.70	-339.61	-904.66	499.05	40.4759838
-104.7724722	0.00						
4825.00	14.35	151.12	4695.57	-347.76	-926.36	511.02	40.4759242
-104.7724292	0.00						
4925.00	14.35	151.12	4792.45	-355.91	-948.07	522.99	40.4758647
-104.7723861	0.00						
5025.00	14.35	151.12	4889.33	-364.06	-969.77	534.96	40.4758051
-104.7723431	0.00						
5125.00	14.35	151.12	4986.21	-372.21	-991.48	546.94	40.4757455
-104.7723001	0.00						
5225.00	14.35	151.12	5083.09	-380.35	-1013.18	558.91	40.4756859
-104.7722570	0.00						
5325.00	14.35	151.12	5179.97	-388.50	-1034.89	570.88	40.4756264
-104.7722140	0.00						
5425.00	14.35	151.12	5276.85	-396.65	-1056.59	582.86	40.4755668
-104.7721710	0.00						
5525.00	14.35	151.12	5373.73	-404.80	-1078.29	594.83	40.4755072
-104.7721279	0.00						
5625.00	14.35	151.12	5470.61	-412.95	-1100.00	606.80	40.4754476
-104.7720849	0.00						
5725.00	14.35	151.12	5567.49	-421.09	-1121.70	618.78	40.4753881
-104.7720419	0.00						
5825.00	14.35	151.12	5664.37	-429.24	-1143.41	630.75	40.4753285
-104.7719988	0.00						
5925.00	14.35	151.12	5761.24	-437.39	-1165.11	642.72	40.4752689
-104.7719558	0.00						
6025.00	14.35	151.12	5858.12	-445.54	-1186.82	654.69	40.4752093
-104.7719128	0.00						
6125.00	14.35	151.12	5955.00	-453.69	-1208.52	666.67	40.4751498
-104.7718697	0.00						
6225.00	14.35	151.12	6051.88	-461.83	-1230.23	678.64	40.4750902
-104.7718267	0.00						
6325.00	14.35	151.12	6148.76	-469.98	-1251.93	690.61	40.4750306
-104.7717837	0.00						
6425.00	14.35	151.12	6245.64	-478.13	-1273.63	702.59	40.4749710
-104.7717406	0.00						
6525.00	14.35	151.12	6342.52	-486.28	-1295.34	714.56	40.4749114
-104.7716976	0.00						
6625.00	14.35	151.12	6439.40	-494.42	-1317.04	726.53	40.4748519
-104.7716546	0.00						
6668.09	14.35	151.12	6481.14	-497.94	-1326.39	731.69	40.4748262
-104.7716360	0.00						
6725.00	12.87	172.09	6536.49	-500.06	-1338.86	735.97	40.4747920
-104.7716206	9.00						
6825.00	14.82	209.53	6633.77	-491.61	-1361.06	731.19	40.4747310
-104.7716378	9.00						
6925.00	20.81	231.93	6729.04	-467.85	-1383.18	710.87	40.4746703
-104.7717109	9.00						
7025.00	28.38	243.76	6819.96	-429.36	-1404.69	675.49	40.4746113
-104.7718380	9.00						

DONN_32C-20-L_PWP__REV-B.0_.las

7125.00	36.57	250.79	6904.28	-377.09	-1425.04	625.95	40.4745554
-104.7720161	9.00						
7225.00	45.03	255.50	6979.93	-312.33	-1443.73	563.44	40.4745041
-104.7722408	9.00						
7325.00	53.63	258.99	7045.05	-236.68	-1460.32	489.53	40.4744586
-104.7725065	9.00						
7425.00	62.32	261.77	7098.04	-151.99	-1474.38	406.01	40.4744200
-104.7728067	9.00						
7525.00	71.05	264.14	7137.58	-60.35	-1485.57	314.96	40.4743893
-104.7731339	9.00						
7625.00	79.81	266.27	7162.71	35.98	-1493.62	218.61	40.4743672
-104.7734802	9.00						
7725.00	88.59	268.29	7172.80	134.62	-1498.32	119.34	40.4743543
-104.7738371	9.00						
7742.80	90.15	268.64	7173.00	152.24	-1498.80	101.55	40.4743530
-104.7739010	9.00						
7825.00	90.15	268.64	7172.78	233.58	-1500.75	19.37	40.4743476
-104.7741964	0.00						
7925.00	90.15	268.64	7172.52	332.52	-1503.12	-80.60	40.4743411
-104.7745557	0.00						
8025.00	90.15	268.64	7172.26	431.46	-1505.49	-180.58	40.4743346
-104.7749151	0.00						
8125.00	90.15	268.64	7172.00	530.41	-1507.86	-280.55	40.4743281
-104.7752744	0.00						
8225.00	90.15	268.64	7171.74	629.35	-1510.24	-380.52	40.4743216
-104.7756337	0.00						
8325.00	90.15	268.64	7171.48	728.29	-1512.61	-480.49	40.4743151
-104.7759930	0.00						
8425.00	90.15	268.64	7171.21	827.24	-1514.98	-580.46	40.4743086
-104.7763524	0.00						
8525.00	90.15	268.64	7170.95	926.18	-1517.35	-680.43	40.4743021
-104.7767117	0.00						
8625.00	90.15	268.64	7170.69	1025.13	-1519.72	-780.41	40.4742955
-104.7770710	0.00						
8725.00	90.15	268.64	7170.43	1124.07	-1522.09	-880.38	40.4742890
-104.7774304	0.00						
8825.00	90.15	268.64	7170.17	1223.01	-1524.47	-980.35	40.4742825
-104.7777897	0.00						
8925.00	90.15	268.64	7169.90	1321.96	-1526.84	-1080.32	40.4742760
-104.7781490	0.00						
9025.00	90.15	268.64	7169.64	1420.90	-1529.21	-1180.29	40.4742695
-104.7785084	0.00						
9125.00	90.15	268.64	7169.38	1519.84	-1531.58	-1280.26	40.4742629
-104.7788677	0.00						
9225.00	90.15	268.64	7169.12	1618.79	-1533.95	-1380.23	40.4742564
-104.7792270	0.00						
9325.00	90.15	268.64	7168.86	1717.73	-1536.32	-1480.21	40.4742499
-104.7795864	0.00						
9425.00	90.15	268.64	7168.60	1816.68	-1538.70	-1580.18	40.4742434
-104.7799457	0.00						
9525.00	90.15	268.64	7168.33	1915.62	-1541.07	-1680.15	40.4742368
-104.7803050	0.00						

DONN_32C-20-L_PWP__REV-B.0_.las

9625.00	90.15	268.64	7168.07	2014.56	-1543.44	-1780.12	40.4742303
-104.7806643	0.00						
9725.00	90.15	268.64	7167.81	2113.51	-1545.81	-1880.09	40.4742238
-104.7810237	0.00						
9825.00	90.15	268.64	7167.55	2212.45	-1548.18	-1980.06	40.4742172
-104.7813830	0.00						
9925.00	90.15	268.64	7167.29	2311.39	-1550.55	-2080.03	40.4742107
-104.7817423	0.00						
10025.00	90.15	268.64	7167.03	2410.34	-1552.93	-2180.01	40.4742042
-104.7821017	0.00						
10125.00	90.15	268.64	7166.76	2509.28	-1555.30	-2279.98	40.4741976
-104.7824610	0.00						
10225.00	90.15	268.64	7166.50	2608.23	-1557.67	-2379.95	40.4741911
-104.7828203	0.00						
10325.00	90.15	268.64	7166.24	2707.17	-1560.04	-2479.92	40.4741846
-104.7831797	0.00						
10425.00	90.15	268.64	7165.98	2806.11	-1562.41	-2579.89	40.4741780
-104.7835390	0.00						
10525.00	90.15	268.64	7165.72	2905.06	-1564.78	-2679.86	40.4741715
-104.7838983	0.00						
10625.00	90.15	268.64	7165.45	3004.00	-1567.16	-2779.84	40.4741649
-104.7842576	0.00						
10725.00	90.15	268.64	7165.19	3102.95	-1569.53	-2879.81	40.4741584
-104.7846170	0.00						
10825.00	90.15	268.64	7164.93	3201.89	-1571.90	-2979.78	40.4741519
-104.7849763	0.00						
10925.00	90.15	268.64	7164.67	3300.83	-1574.27	-3079.75	40.4741453
-104.7853356	0.00						
11025.00	90.15	268.64	7164.41	3399.78	-1576.64	-3179.72	40.4741388
-104.7856950	0.00						
11125.00	90.15	268.64	7164.15	3498.72	-1579.01	-3279.69	40.4741322
-104.7860543	0.00						
11225.00	90.15	268.64	7163.88	3597.66	-1581.39	-3379.66	40.4741257
-104.7864136	0.00						
11325.00	90.15	268.64	7163.62	3696.61	-1583.76	-3479.64	40.4741191
-104.7867729	0.00						
11425.00	90.15	268.64	7163.36	3795.55	-1586.13	-3579.61	40.4741126
-104.7871323	0.00						
11525.00	90.15	268.64	7163.10	3894.50	-1588.50	-3679.58	40.4741060
-104.7874916	0.00						
11625.00	90.15	268.64	7162.84	3993.44	-1590.87	-3779.55	40.4740995
-104.7878509	0.00						
11725.00	90.15	268.64	7162.57	4092.38	-1593.24	-3879.52	40.4740929
-104.7882103	0.00						
11825.00	90.15	268.64	7162.31	4191.33	-1595.62	-3979.49	40.4740864
-104.7885696	0.00						
11925.00	90.15	268.64	7162.05	4290.27	-1597.99	-4079.47	40.4740798
-104.7889289	0.00						
12025.00	90.15	268.64	7161.79	4389.21	-1600.36	-4179.44	40.4740733
-104.7892883	0.00						
12042.80	90.15	268.64	7161.74	4406.82	-1600.78	-4197.23	40.4740721
-104.7893522	0.00						

DONN_32C-20-L_PWP__REV-B.0_.las

12125.00	90.15	271.11	7161.53	4487.88	-1600.96	-4279.43	40.4740716
-104.7896476	3.00						
12225.00	90.15	274.11	7161.26	4585.57	-1596.41	-4379.31	40.4740840
-104.7900067	3.00						
12325.00	90.15	277.11	7161.00	4682.01	-1586.64	-4478.82	40.4741108
-104.7903643	3.00						
12421.43	90.15	280.00	7160.75	4773.58	-1572.30	-4574.16	40.4741501
-104.7907070	3.00						
12425.00	90.15	280.00	7160.74	4776.95	-1571.68	-4577.68	40.4741518
-104.7907197	0.00						
12525.00	90.15	280.00	7160.48	4871.10	-1554.32	-4676.16	40.4741994
-104.7910737	0.00						
12621.43	90.15	280.00	7160.22	4961.89	-1537.57	-4771.12	40.4742453
-104.7914150	0.00						
12625.00	90.15	279.89	7160.22	4965.25	-1536.96	-4774.64	40.4742470
-104.7914277	3.00						
12725.00	90.15	276.89	7159.95	5060.30	-1522.36	-4873.56	40.4742870
-104.7917832	3.00						
12825.00	90.15	273.89	7159.69	5156.84	-1512.97	-4973.11	40.4743127
-104.7921410	3.00						
12925.00	90.15	270.89	7159.42	5254.61	-1508.79	-5073.01	40.4743241
-104.7925001	3.00						
13025.00	90.15	267.89	7159.16	5353.35	-1509.85	-5172.99	40.4743212
-104.7928595	3.00						
13125.00	90.15	264.89	7158.89	5452.77	-1516.14	-5272.78	40.4743039
-104.7932181	3.00						
13225.00	90.15	261.89	7158.62	5552.62	-1527.65	-5372.10	40.4742722
-104.7935751	3.00						
13321.42	90.15	259.00	7158.37	5649.03	-1543.65	-5467.18	40.4742282
-104.7939169	3.00						
13325.00	90.15	259.00	7158.36	5652.60	-1544.33	-5470.69	40.4742264
-104.7939295	0.00						
13421.42	90.15	259.00	7158.11	5749.00	-1562.73	-5565.34	40.4741758
-104.7942697	0.00						
13425.00	90.15	259.11	7158.10	5752.58	-1563.41	-5568.85	40.4741739
-104.7942823	3.00						
13525.00	90.15	262.11	7157.84	5852.56	-1579.73	-5667.50	40.4741291
-104.7946369	3.00						
13625.00	90.15	265.11	7157.58	5952.39	-1590.86	-5766.87	40.4740985
-104.7949940	3.00						
13723.63	90.15	268.07	7157.32	6050.41	-1596.73	-5865.31	40.4740823
-104.7953478	3.00						
13725.00	90.15	268.07	7157.31	6051.77	-1596.78	-5866.68	40.4740822
-104.7953528	0.00						
13825.00	90.15	268.07	7157.05	6150.86	-1600.15	-5966.62	40.4740728
-104.7957120	0.00						
13925.00	90.15	268.07	7156.79	6249.94	-1603.53	-6066.57	40.4740635
-104.7960712	0.00						
14025.00	90.15	268.07	7156.53	6349.02	-1606.90	-6166.51	40.4740542
-104.7964304	0.00						
14125.00	90.15	268.07	7156.27	6448.11	-1610.28	-6266.45	40.4740448
-104.7967897	0.00						

DONN_32C-20-L_PWP__REV-B.0_.las

14225.00	90.15	268.07	7156.01	6547.19	-1613.65	-6366.40	40.4740355
-104.7971489	0.00						
14325.00	90.15	268.07	7155.75	6646.28	-1617.02	-6466.34	40.4740262
-104.7975081	0.00						
14425.00	90.15	268.07	7155.49	6745.36	-1620.40	-6566.28	40.4740168
-104.7978673	0.00						
14525.00	90.15	268.07	7155.23	6844.45	-1623.77	-6666.22	40.4740075
-104.7982265	0.00						
14625.00	90.15	268.07	7154.97	6943.53	-1627.15	-6766.17	40.4739982
-104.7985858	0.00						
14725.00	90.15	268.07	7154.71	7042.61	-1630.52	-6866.11	40.4739888
-104.7989450	0.00						
14825.00	90.15	268.07	7154.45	7141.70	-1633.90	-6966.05	40.4739795
-104.7993042	0.00						
14925.00	90.15	268.07	7154.19	7240.78	-1637.27	-7065.99	40.4739701
-104.7996634	0.00						
15025.00	90.15	268.07	7153.93	7339.87	-1640.65	-7165.94	40.4739608
-104.8000227	0.00						
15125.00	90.15	268.07	7153.67	7438.95	-1644.02	-7265.88	40.4739514
-104.8003819	0.00						
15225.00	90.15	268.07	7153.41	7538.03	-1647.40	-7365.82	40.4739421
-104.8007411	0.00						
15325.00	90.15	268.07	7153.15	7637.12	-1650.77	-7465.76	40.4739328
-104.8011003	0.00						
15425.00	90.15	268.07	7152.89	7736.20	-1654.15	-7565.71	40.4739234
-104.8014595	0.00						
15525.00	90.15	268.07	7152.63	7835.29	-1657.52	-7665.65	40.4739141
-104.8018188	0.00						
15625.00	90.15	268.07	7152.36	7934.37	-1660.90	-7765.59	40.4739047
-104.8021780	0.00						
15725.00	90.15	268.07	7152.10	8033.46	-1664.27	-7865.54	40.4738954
-104.8025372	0.00						
15825.00	90.15	268.07	7151.84	8132.54	-1667.64	-7965.48	40.4738860
-104.8028964	0.00						
15925.00	90.15	268.07	7151.58	8231.62	-1671.02	-8065.42	40.4738767
-104.8032557	0.00						
16025.00	90.15	268.07	7151.32	8330.71	-1674.39	-8165.36	40.4738673
-104.8036149	0.00						
16125.00	90.15	268.07	7151.06	8429.79	-1677.77	-8265.31	40.4738580
-104.8039741	0.00						
16225.00	90.15	268.07	7150.80	8528.88	-1681.14	-8365.25	40.4738486
-104.8043333	0.00						
16325.00	90.15	268.07	7150.54	8627.96	-1684.52	-8465.19	40.4738392
-104.8046925	0.00						
16425.00	90.15	268.07	7150.28	8727.05	-1687.89	-8565.13	40.4738299
-104.8050518	0.00						
16525.00	90.15	268.07	7150.02	8826.13	-1691.27	-8665.08	40.4738205
-104.8054110	0.00						
16625.00	90.15	268.07	7149.76	8925.21	-1694.64	-8765.02	40.4738112
-104.8057702	0.00						
16725.00	90.15	268.07	7149.50	9024.30	-1698.02	-8864.96	40.4738018
-104.8061294	0.00						

DONN_32C-20-L_PWP__REV-B.0_.las

16825.00	90.15	268.07	7149.24	9123.38	-1701.39	-8964.91	40.4737924
-104.8064886	0.00						
16925.00	90.15	268.07	7148.98	9222.47	-1704.77	-9064.85	40.4737831
-104.8068479	0.00						
17025.00	90.15	268.07	7148.72	9321.55	-1708.14	-9164.79	40.4737737
-104.8072071	0.00						
17125.00	90.15	268.07	7148.46	9420.64	-1711.51	-9264.73	40.4737644
-104.8075663	0.00						
17225.00	90.15	268.07	7148.20	9519.72	-1714.89	-9364.68	40.4737550
-104.8079255	0.00						
17325.00	90.15	268.07	7147.94	9618.80	-1718.26	-9464.62	40.4737456
-104.8082847	0.00						
17425.00	90.15	268.07	7147.67	9717.89	-1721.64	-9564.56	40.4737362
-104.8086440	0.00						
17525.00	90.15	268.07	7147.41	9816.97	-1725.01	-9664.50	40.4737269
-104.8090032	0.00						
17625.00	90.15	268.07	7147.15	9916.06	-1728.39	-9764.45	40.4737175
-104.8093624	0.00						
17725.00	90.15	268.07	7146.89	10015.14	-1731.76	-9864.39	40.4737081
-104.8097216	0.00						
17825.00	90.15	268.07	7146.63	10114.23	-1735.14	-9964.33	40.4736988
-104.8100808	0.00						
17925.00	90.15	268.07	7146.37	10213.31	-1738.51	-10064.28	40.4736894
-104.8104401	0.00						
18025.00	90.15	268.07	7146.11	10312.39	-1741.89	-10164.22	40.4736800
-104.8107993	0.00						
18067.79	90.15	268.07	7146.00	10354.79	-1743.33	-10206.99	40.4736760
-104.8109530	0.00						

Planned Wellpath Report

DONN 32C-20-L PWP (REV-B.0)

Page 1 of 6



REFERENCE WELLPATH IDENTIFICATION

Operator	SRC ENERGY	Slot	SLOT#25 DONN 32C-20-L (978'FNL & 252'FEL, SEC.21)
Area	COLORADO	Well	DONN 32C-20-L
Field	WELD COUNTY (NAD83,TRUE NORTH)	Wellbore	DONN 32C-20-L PWB
Facility	SEC.21-T06N-R66W		

REPORT SETUP INFORMATION

Projection System	NAD83 / Lambert Colorado SP, Northern Zone (501), US feet	Software System	WellArchitect® 5.1
North Reference	True	User	Doddanna
Scale	0.999965	Report Generated	8/24/2017 at 5:01:58 PM
Convergence at slot	0.47° East	Database/Source file	Denver DB/DONN_32C-20-L_PWP__REV-B.0_.xml

WELLPATH LOCATION

	Local coordinates		Grid coordinates		Geographic coordinates	
	North[ft]	East[ft]	Easting[US ft]	Northing[US ft]	Latitude	Longitude
Slot Location	823.68	23.37	3201888.23	1417972.08	40°28'42.481"N	104°46'27.358"W
Facility Reference Pt			3201871.60	1417148.27	40°28'34.342"N	104°46'27.660"W
Field Reference Pt			3171284.48	1426358.81	40°30'07.643"N	104°53'02.634"W

WELLPATH DATUM

Calculation method	Minimum curvature	PRECISION DRILLING (25') (RKB) to Facility Vertical Datum	4776.00ft
Horizontal Reference Pt	Slot	PRECISION DRILLING (25') (RKB) to Mean Sea Level	4776.00ft
Vertical Reference Pt	PRECISION DRILLING (25') (RKB)	PRECISION DRILLING (25') (RKB) to Mud Line at Slot (SLOT#25 DONN 32C-20-L (978'FNL & 252'FEL, SEC.21))	4776.00ft
MD Reference Pt	PRECISION DRILLING (25') (RKB)	Section Origin	N 0.00, E 0.00 ft
Field Vertical Reference	Mean Sea Level	Section Azimuth	260.31°

Planned Wellpath Report

DONN 32C-20-L PWP (REV-B.0)

Page 2 of 6



REFERENCE WELLPATH IDENTIFICATION

Operator	SRC ENERGY	Slot	SLOT#25 DONN 32C-20-L (978'FNL & 252'FEL, SEC.21)
Area	COLORADO	Well	DONN 32C-20-L
Field	WELD COUNTY (NAD83,TRUE NORTH)	Wellbore	DONN 32C-20-L PWB
Facility	SEC.21-T06N-R66W		

WELLPATH DATA (193 stations) † = interpolated/extrapolated station

MD [ft]	Inclination [°]	Azimuth [°]	TVD [ft]	Vert Sect [ft]	North [ft]	East [ft]	DLS [°/100ft]	Comments
0.00†	0.000	151.117	0.00	0.00	0.00	0.00	0.00	
25.00	0.000	151.117	25.00	0.00	0.00	0.00	0.00	Tie On
125.00†	0.000	151.117	125.00	0.00	0.00	0.00	0.00	
200.00	0.000	151.117	200.00	0.00	0.00	0.00	0.00	End of Tangent
225.00†	0.500	151.117	225.00	-0.04	-0.10	0.05	2.00	
325.00†	2.500	151.117	324.96	-0.90	-2.39	1.32	2.00	
425.00†	4.500	151.117	424.77	-2.90	-7.73	4.27	2.00	
525.00†	6.500	151.117	524.30	-6.05	-16.12	8.89	2.00	
625.00†	8.500	151.117	623.44	-10.34	-27.55	15.20	2.00	
725.00†	10.500	151.117	722.07	-15.77	-42.00	23.17	2.00	
825.00†	12.500	151.117	820.05	-22.32	-59.46	32.80	2.00	
917.60	14.352	151.117	910.12	-29.39	-78.29	43.19	2.00	End of Build
925.00†	14.352	151.117	917.29	-29.99	-79.89	44.07	0.00	
1025.00†	14.352	151.117	1014.17	-38.14	-101.60	56.04	0.00	
1125.00†	14.352	151.117	1111.05	-46.29	-123.30	68.02	0.00	
1225.00†	14.352	151.117	1207.93	-54.44	-145.00	79.99	0.00	
1325.00†	14.352	151.117	1304.80	-62.58	-166.71	91.96	0.00	
1425.00†	14.352	151.117	1401.68	-70.73	-188.41	103.94	0.00	
1525.00†	14.352	151.117	1498.56	-78.88	-210.12	115.91	0.00	
1625.00†	14.352	151.117	1595.44	-87.03	-231.82	127.88	0.00	
1725.00†	14.352	151.117	1692.32	-95.18	-253.53	139.86	0.00	
1825.00†	14.352	151.117	1789.20	-103.32	-275.23	151.83	0.00	
1925.00†	14.352	151.117	1886.08	-111.47	-296.94	163.80	0.00	
2025.00†	14.352	151.117	1982.96	-119.62	-318.64	175.77	0.00	
2125.00†	14.352	151.117	2079.84	-127.77	-340.34	187.75	0.00	
2225.00†	14.352	151.117	2176.72	-135.92	-362.05	199.72	0.00	
2325.00†	14.352	151.117	2273.60	-144.06	-383.75	211.69	0.00	
2425.00†	14.352	151.117	2370.48	-152.21	-405.46	223.67	0.00	
2525.00†	14.352	151.117	2467.35	-160.36	-427.16	235.64	0.00	
2625.00†	14.352	151.117	2564.23	-168.51	-448.87	247.61	0.00	
2725.00†	14.352	151.117	2661.11	-176.65	-470.57	259.59	0.00	
2825.00†	14.352	151.117	2757.99	-184.80	-492.28	271.56	0.00	
2925.00†	14.352	151.117	2854.87	-192.95	-513.98	283.53	0.00	
3025.00†	14.352	151.117	2951.75	-201.10	-535.68	295.50	0.00	
3125.00†	14.352	151.117	3048.63	-209.25	-557.39	307.48	0.00	
3225.00†	14.352	151.117	3145.51	-217.39	-579.09	319.45	0.00	
3325.00†	14.352	151.117	3242.39	-225.54	-600.80	331.42	0.00	
3425.00†	14.352	151.117	3339.27	-233.69	-622.50	343.40	0.00	
3525.00†	14.352	151.117	3436.15	-241.84	-644.21	355.37	0.00	
3625.00†	14.352	151.117	3533.02	-249.99	-665.91	367.34	0.00	
3725.00†	14.352	151.117	3629.90	-258.13	-687.62	379.32	0.00	
3825.00†	14.352	151.117	3726.78	-266.28	-709.32	391.29	0.00	
3925.00†	14.352	151.117	3823.66	-274.43	-731.02	403.26	0.00	
4025.00†	14.352	151.117	3920.54	-282.58	-752.73	415.23	0.00	
4125.00†	14.352	151.117	4017.42	-290.73	-774.43	427.21	0.00	

Planned Wellpath Report

DONN 32C-20-L PWP (REV-B.0)

Page 3 of 6



REFERENCE WELLPATH IDENTIFICATION

Operator	SRC ENERGY	Slot	SLOT#25 DONN 32C-20-L (978'FNL & 252'FEL, SEC.21)
Area	COLORADO	Well	DONN 32C-20-L
Field	WELD COUNTY (NAD83,TRUE NORTH)	Wellbore	DONN 32C-20-L PWB
Facility	SEC.21-T06N-R66W		

WELLPATH DATA (193 stations) † = interpolated/extrapolated station

MD [ft]	Inclination [°]	Azimuth [°]	TVD [ft]	Vert Sect [ft]	North [ft]	East [ft]	DLS [°/100ft]	Comments
4225.00†	14.352	151.117	4114.30	-298.87	-796.14	439.18	0.00	
4325.00†	14.352	151.117	4211.18	-307.02	-817.84	451.15	0.00	
4425.00†	14.352	151.117	4308.06	-315.17	-839.55	463.13	0.00	
4525.00†	14.352	151.117	4404.94	-323.32	-861.25	475.10	0.00	
4625.00†	14.352	151.117	4501.82	-331.47	-882.95	487.07	0.00	
4725.00†	14.352	151.117	4598.70	-339.61	-904.66	499.05	0.00	
4825.00†	14.352	151.117	4695.57	-347.76	-926.36	511.02	0.00	
4925.00†	14.352	151.117	4792.45	-355.91	-948.07	522.99	0.00	
5025.00†	14.352	151.117	4889.33	-364.06	-969.77	534.96	0.00	
5125.00†	14.352	151.117	4986.21	-372.21	-991.48	546.94	0.00	
5225.00†	14.352	151.117	5083.09	-380.35	-1013.18	558.91	0.00	
5325.00†	14.352	151.117	5179.97	-388.50	-1034.89	570.88	0.00	
5425.00†	14.352	151.117	5276.85	-396.65	-1056.59	582.86	0.00	
5525.00†	14.352	151.117	5373.73	-404.80	-1078.29	594.83	0.00	
5625.00†	14.352	151.117	5470.61	-412.95	-1100.00	606.80	0.00	
5725.00†	14.352	151.117	5567.49	-421.09	-1121.70	618.78	0.00	
5825.00†	14.352	151.117	5664.37	-429.24	-1143.41	630.75	0.00	
5925.00†	14.352	151.117	5761.24	-437.39	-1165.11	642.72	0.00	
6025.00†	14.352	151.117	5858.12	-445.54	-1186.82	654.69	0.00	
6125.00†	14.352	151.117	5955.00	-453.69	-1208.52	666.67	0.00	
6225.00†	14.352	151.117	6051.88	-461.83	-1230.23	678.64	0.00	
6325.00†	14.352	151.117	6148.76	-469.98	-1251.93	690.61	0.00	
6425.00†	14.352	151.117	6245.64	-478.13	-1273.63	702.59	0.00	
6525.00†	14.352	151.117	6342.52	-486.28	-1295.34	714.56	0.00	
6625.00†	14.352	151.117	6439.40	-494.42	-1317.04	726.53	0.00	
6668.09	14.352	151.117	6481.14	-497.94	-1326.39	731.69	0.00	End of Tangent
6725.00†	12.868	172.093	6536.49	-500.06	-1338.86	735.97	9.00	
6825.00†	14.820	209.528	6633.77	-491.61	-1361.06	731.19	9.00	
6925.00†	20.807	231.930	6729.04	-467.85	-1383.18	710.87	9.00	
7025.00†	28.380	243.764	6819.96	-429.36	-1404.69	675.49	9.00	
7125.00†	36.565	250.788	6904.28	-377.09	-1425.04	625.95	9.00	
7225.00†	45.027	255.501	6979.93	-312.33	-1443.73	563.44	9.00	
7325.00†	53.633	258.985	7045.05	-236.68	-1460.32	489.53	9.00	
7425.00†	62.319	261.769	7098.04	-151.99	-1474.38	406.01	9.00	
7525.00†	71.053	264.138	7137.58	-60.35	-1485.57	314.96	9.00	
7625.00†	79.814	266.270	7162.71	35.98	-1493.62	218.61	9.00	
7725.00†	88.588	268.286	7172.80	134.62	-1498.32	119.34	9.00	
7742.80	90.150	268.641	7173.00†	152.24	-1498.80	101.55	9.00	End of 3D Arc
7825.00†	90.150	268.641	7172.78	233.58	-1500.75	19.37	0.00	
7925.00†	90.150	268.641	7172.52	332.52	-1503.12	-80.60	0.00	
8025.00†	90.150	268.641	7172.26	431.46	-1505.49	-180.58	0.00	
8125.00†	90.150	268.641	7172.00	530.41	-1507.86	-280.55	0.00	
8225.00†	90.150	268.641	7171.74	629.35	-1510.24	-380.52	0.00	
8325.00†	90.150	268.641	7171.48	728.29	-1512.61	-480.49	0.00	
8425.00†	90.150	268.641	7171.21	827.24	-1514.98	-580.46	0.00	

Planned Wellpath Report

DONN 32C-20-L PWP (REV-B.0)

Page 4 of 6



REFERENCE WELLPATH IDENTIFICATION

Operator	SRC ENERGY	Slot	SLOT#25 DONN 32C-20-L (978'FNL & 252'FEL, SEC.21)
Area	COLORADO	Well	DONN 32C-20-L
Field	WELD COUNTY (NAD83,TRUE NORTH)	Wellbore	DONN 32C-20-L PWB
Facility	SEC.21-T06N-R66W		

WELLPATH DATA (193 stations) † = interpolated/extrapolated station

MD [ft]	Inclination [°]	Azimuth [°]	TVD [ft]	Vert Sect [ft]	North [ft]	East [ft]	DLS [°/100ft]	Comments
8525.00†	90.150	268.641	7170.95	926.18	-1517.35	-680.43	0.00	
8625.00†	90.150	268.641	7170.69	1025.13	-1519.72	-780.41	0.00	
8725.00†	90.150	268.641	7170.43	1124.07	-1522.09	-880.38	0.00	
8825.00†	90.150	268.641	7170.17	1223.01	-1524.47	-980.35	0.00	
8925.00†	90.150	268.641	7169.90	1321.96	-1526.84	-1080.32	0.00	
9025.00†	90.150	268.641	7169.64	1420.90	-1529.21	-1180.29	0.00	
9125.00†	90.150	268.641	7169.38	1519.84	-1531.58	-1280.26	0.00	
9225.00†	90.150	268.641	7169.12	1618.79	-1533.95	-1380.23	0.00	
9325.00†	90.150	268.641	7168.86	1717.73	-1536.32	-1480.21	0.00	
9425.00†	90.150	268.641	7168.60	1816.68	-1538.70	-1580.18	0.00	
9525.00†	90.150	268.641	7168.33	1915.62	-1541.07	-1680.15	0.00	
9625.00†	90.150	268.641	7168.07	2014.56	-1543.44	-1780.12	0.00	
9725.00†	90.150	268.641	7167.81	2113.51	-1545.81	-1880.09	0.00	
9825.00†	90.150	268.641	7167.55	2212.45	-1548.18	-1980.06	0.00	
9925.00†	90.150	268.641	7167.29	2311.39	-1550.55	-2080.03	0.00	
10025.00†	90.150	268.641	7167.03	2410.34	-1552.93	-2180.01	0.00	
10125.00†	90.150	268.641	7166.76	2509.28	-1555.30	-2279.98	0.00	
10225.00†	90.150	268.641	7166.50	2608.23	-1557.67	-2379.95	0.00	
10325.00†	90.150	268.641	7166.24	2707.17	-1560.04	-2479.92	0.00	
10425.00†	90.150	268.641	7165.98	2806.11	-1562.41	-2579.89	0.00	
10525.00†	90.150	268.641	7165.72	2905.06	-1564.78	-2679.86	0.00	
10625.00†	90.150	268.641	7165.45	3004.00	-1567.16	-2779.84	0.00	
10725.00†	90.150	268.641	7165.19	3102.95	-1569.53	-2879.81	0.00	
10825.00†	90.150	268.641	7164.93	3201.89	-1571.90	-2979.78	0.00	
10925.00†	90.150	268.641	7164.67	3300.83	-1574.27	-3079.75	0.00	
11025.00†	90.150	268.641	7164.41	3399.78	-1576.64	-3179.72	0.00	
11125.00†	90.150	268.641	7164.15	3498.72	-1579.01	-3279.69	0.00	
11225.00†	90.150	268.641	7163.88	3597.66	-1581.39	-3379.66	0.00	
11325.00†	90.150	268.641	7163.62	3696.61	-1583.76	-3479.64	0.00	
11425.00†	90.150	268.641	7163.36	3795.55	-1586.13	-3579.61	0.00	
11525.00†	90.150	268.641	7163.10	3894.50	-1588.50	-3679.58	0.00	
11625.00†	90.150	268.641	7162.84	3993.44	-1590.87	-3779.55	0.00	
11725.00†	90.150	268.641	7162.57	4092.38	-1593.24	-3879.52	0.00	
11825.00†	90.150	268.641	7162.31	4191.33	-1595.62	-3979.49	0.00	
11925.00†	90.150	268.641	7162.05	4290.27	-1597.99	-4079.47	0.00	
12025.00†	90.150	268.641	7161.79	4389.21	-1600.36	-4179.44	0.00	
12042.80	90.150	268.641	7161.74	4406.82	-1600.78	-4197.23	0.00	End of Tangent
12125.00†	90.151	271.107	7161.53	4487.88	-1600.96	-4279.43	3.00	
12225.00†	90.151	274.107	7161.26	4585.57	-1596.41	-4379.31	3.00	
12325.00†	90.151	277.107	7161.00	4682.01	-1586.64	-4478.82	3.00	
12421.43	90.150	280.000	7160.75	4773.58	-1572.30	-4574.16	3.00	End of 3D Arc
12425.00†	90.150	280.000	7160.74	4776.95	-1571.68	-4577.68	0.00	
12525.00†	90.150	280.000	7160.48	4871.10	-1554.32	-4676.16	0.00	
12621.43	90.150	280.000	7160.22	4961.89	-1537.57	-4771.12	0.00	End of Tangent
12625.00†	90.150	279.893	7160.22	4965.25	-1536.96	-4774.64	3.00	

Planned Wellpath Report

DONN 32C-20-L PWP (REV-B.0)

Page 5 of 6



REFERENCE WELLPATH IDENTIFICATION

Operator	SRC ENERGY	Slot	SLOT#25 DONN 32C-20-L (978'FNL & 252'FEL, SEC.21)
Area	COLORADO	Well	DONN 32C-20-L
Field	WELD COUNTY (NAD83,TRUE NORTH)	Wellbore	DONN 32C-20-L PWB
Facility	SEC.21-T06N-R66W		

WELLPATH DATA (193 stations) † = interpolated/extrapolated station

MD [ft]	Inclination [°]	Azimuth [°]	TVD [ft]	Vert Sect [ft]	North [ft]	East [ft]	DLS [°/100ft]	Comments
12725.00†	90.151	276.893	7159.95	5060.30	-1522.36	-4873.56	3.00	
12825.00†	90.152	273.893	7159.69	5156.84	-1512.97	-4973.11	3.00	
12925.00†	90.153	270.893	7159.42	5254.61	-1508.79	-5073.01	3.00	
13025.00†	90.152	267.893	7159.16	5353.35	-1509.85	-5172.99	3.00	
13125.00†	90.152	264.893	7158.89	5452.77	-1516.14	-5272.78	3.00	
13225.00†	90.151	261.893	7158.62	5552.62	-1527.65	-5372.10	3.00	
13321.42	90.150	259.000	7158.37	5649.03	-1543.65	-5467.18	3.00	End of 3D Arc
13325.00†	90.150	259.000	7158.36	5652.60	-1544.33	-5470.69	0.00	
13421.42	90.150	259.000	7158.11	5749.00	-1562.73	-5565.34	0.00	End of Tangent
13425.00†	90.150	259.107	7158.10	5752.58	-1563.41	-5568.85	3.00	
13525.00†	90.150	262.107	7157.84	5852.56	-1579.73	-5667.50	3.00	
13625.00†	90.150	265.107	7157.58	5952.39	-1590.86	-5766.87	3.00	
13723.63	90.149	268.066	7157.32	6050.41	-1596.73	-5865.31	3.00	End of 3D Arc
13725.00†	90.149	268.066	7157.31	6051.77	-1596.78	-5866.68	0.00	
13825.00†	90.149	268.066	7157.05	6150.86	-1600.15	-5966.62	0.00	
13925.00†	90.149	268.066	7156.79	6249.94	-1603.53	-6066.57	0.00	
14025.00†	90.149	268.066	7156.53	6349.02	-1606.90	-6166.51	0.00	
14125.00†	90.149	268.066	7156.27	6448.11	-1610.28	-6266.45	0.00	
14225.00†	90.149	268.066	7156.01	6547.19	-1613.65	-6366.40	0.00	
14325.00†	90.149	268.066	7155.75	6646.28	-1617.02	-6466.34	0.00	
14425.00†	90.149	268.066	7155.49	6745.36	-1620.40	-6566.28	0.00	
14525.00†	90.149	268.066	7155.23	6844.45	-1623.77	-6666.22	0.00	
14625.00†	90.149	268.066	7154.97	6943.53	-1627.15	-6766.17	0.00	
14725.00†	90.149	268.066	7154.71	7042.61	-1630.52	-6866.11	0.00	
14825.00†	90.149	268.066	7154.45	7141.70	-1633.90	-6966.05	0.00	
14925.00†	90.149	268.066	7154.19	7240.78	-1637.27	-7065.99	0.00	
15025.00†	90.149	268.066	7153.93	7339.87	-1640.65	-7165.94	0.00	
15125.00†	90.149	268.066	7153.67	7438.95	-1644.02	-7265.88	0.00	
15225.00†	90.149	268.066	7153.41	7538.03	-1647.40	-7365.82	0.00	
15325.00†	90.149	268.066	7153.15	7637.12	-1650.77	-7465.76	0.00	
15425.00†	90.149	268.066	7152.89	7736.20	-1654.15	-7565.71	0.00	
15525.00†	90.149	268.066	7152.63	7835.29	-1657.52	-7665.65	0.00	
15625.00†	90.149	268.066	7152.36	7934.37	-1660.90	-7765.59	0.00	
15725.00†	90.149	268.066	7152.10	8033.46	-1664.27	-7865.54	0.00	
15825.00†	90.149	268.066	7151.84	8132.54	-1667.64	-7965.48	0.00	
15925.00†	90.149	268.066	7151.58	8231.62	-1671.02	-8065.42	0.00	
16025.00†	90.149	268.066	7151.32	8330.71	-1674.39	-8165.36	0.00	
16125.00†	90.149	268.066	7151.06	8429.79	-1677.77	-8265.31	0.00	
16225.00†	90.149	268.066	7150.80	8528.88	-1681.14	-8365.25	0.00	
16325.00†	90.149	268.066	7150.54	8627.96	-1684.52	-8465.19	0.00	
16425.00†	90.149	268.066	7150.28	8727.05	-1687.89	-8565.13	0.00	
16525.00†	90.149	268.066	7150.02	8826.13	-1691.27	-8665.08	0.00	
16625.00†	90.149	268.066	7149.76	8925.21	-1694.64	-8765.02	0.00	
16725.00†	90.149	268.066	7149.50	9024.30	-1698.02	-8864.96	0.00	
16825.00†	90.149	268.066	7149.24	9123.38	-1701.39	-8964.91	0.00	

Planned Wellpath Report

DONN 32C-20-L PWP (REV-B.0)

Page 6 of 6



REFERENCE WELLPATH IDENTIFICATION

Operator	SRC ENERGY	Slot	SLOT#25 DONN 32C-20-L (978'FNL & 252'FEL, SEC.21)
Area	COLORADO	Well	DONN 32C-20-L
Field	WELD COUNTY (NAD83,TRUE NORTH)	Wellbore	DONN 32C-20-L PWB
Facility	SEC.21-T06N-R66W		

WELLPATH DATA (193 stations) † = interpolated/extrapolated station

MD [ft]	Inclination [°]	Azimuth [°]	TVD [ft]	Vert Sect [ft]	North [ft]	East [ft]	DLS [°/100ft]	Comments
16925.00†	90.149	268.066	7148.98	9222.47	-1704.77	-9064.85	0.00	
17025.00†	90.149	268.066	7148.72	9321.55	-1708.14	-9164.79	0.00	
17125.00†	90.149	268.066	7148.46	9420.64	-1711.51	-9264.73	0.00	
17225.00†	90.149	268.066	7148.20	9519.72	-1714.89	-9364.68	0.00	
17325.00†	90.149	268.066	7147.94	9618.80	-1718.26	-9464.62	0.00	
17425.00†	90.149	268.066	7147.67	9717.89	-1721.64	-9564.56	0.00	
17525.00†	90.149	268.066	7147.41	9816.97	-1725.01	-9664.50	0.00	
17625.00†	90.149	268.066	7147.15	9916.06	-1728.39	-9764.45	0.00	
17725.00†	90.149	268.066	7146.89	10015.14	-1731.76	-9864.39	0.00	
17825.00†	90.149	268.066	7146.63	10114.23	-1735.14	-9964.33	0.00	
17925.00†	90.149	268.066	7146.37	10213.31	-1738.51	-10064.28	0.00	
18025.00†	90.149	268.066	7146.11	10312.39	-1741.89	-10164.22	0.00	
18067.79	90.149	268.066	7146.00 ²	10354.79	-1743.33	-10206.99	0.00	End of Tangent

HOLE & CASING SECTIONS

- Ref Wellbore: DONN 32C-20-L PWB Ref Wellpath: DONN 32C-20-L PWP (REV-B.0)

String/Diameter	Start MD [ft]	End MD [ft]	Interval [ft]	Start TVD [ft]	End TVD [ft]	Start N/S [ft]	Start E/W [ft]	End N/S [ft]	End E/W [ft]
13.5in Open Hole	25.00	1750.00	1725.00	25.00	1716.54	0.00	0.00	-258.95	142.85
9.625in Casing Surface	25.00	1750.00	1725.00	25.00	1716.54	0.00	0.00	-258.95	142.85
8.5in Open Hole	1750.00	18067.79	16317.79	1716.54	7146.00	-258.95	142.85	-1743.33	-10206.98

TARGETS

Name	MD [ft]	TVD [ft]	North [ft]	East [ft]	Grid East [US ft]	Grid North [US ft]	Latitude	Longitude	Shape
SEC.20-T06N-R66W		-2.00	240.08	1.67	3201887.93	1418212.16	40°28'44.854"N	104°46'27.336"W	polygon
SEC.21-T06N-R66W		38.00	-3642.72	-6164.97	3195753.51	1414279.17	40°28'06.478"N	104°47'47.123"W	polygon
2) DONN 32C-20-L BHL ON PLAT (2529' FNL & 150'FWL, SEC.20)	18067.79	7146.00	-1743.33	-10206.99	3191696.23	1416145.34	40°28'25.234"N	104°48'39.431"W	circle
1) DONN 32C-20-L TOP OF PROD ON PLAT (2479'FNL & 150'FEL, SEC.21)	7742.80	7173.00	-1498.80	101.55	3202002.04	1416474.22	40°28'27.671"N	104°46'26.044"W	circle

SURVEY PROGRAM - Ref Wellbore: DONN 32C-20-L PWB Ref Wellpath: DONN 32C-20-L PWP (REV-B.0)

Start MD [ft]	End MD [ft]	Positional Uncertainty Model	Log Name/Comment	Wellbore
25.00	1750.00	Custom BHI NaviTrak (Standard Rotating+Axial Corr) (Rockies 0.03Gt model)		DONN 32C-20-L PWB
1750.00	18067.79	Custom BHI AutoTrak Curve (Short) (Rockies 0.03Gt model)		DONN 32C-20-L PWB