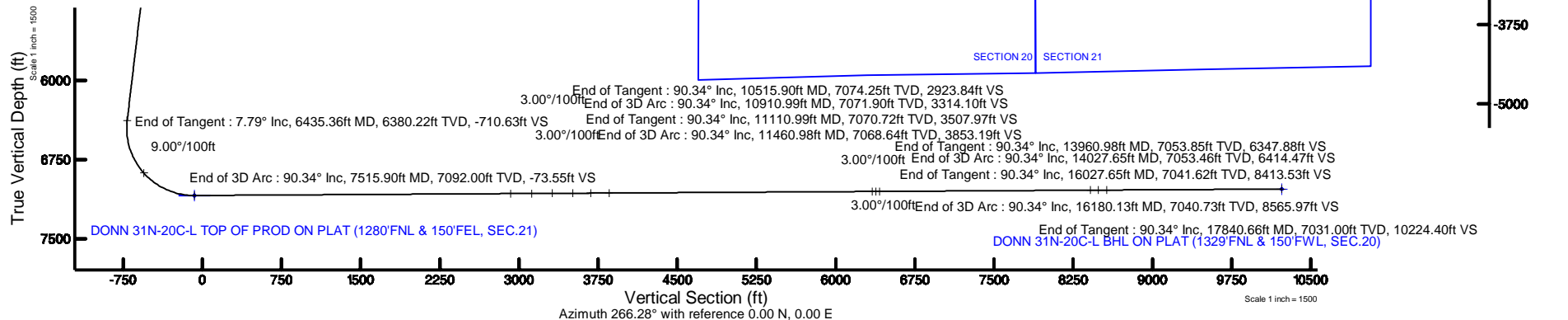


Location:	COLORADO	Slot:	SLOT#19 DONN 31N-20C-L (858'FNL & 251'FEL, SEC.21)
Field:	WELD COUNTY (NAD83,TRUE NORTH)	Well:	DONN 31N-20C-L
Facility:	SEC.21-T06N-R66W	Wellbore:	DONN 31N-20C-L PWB

Plot reference wellpath is DONN 31N-20C-L PWP (REV:6.0)	Grid System: NAD83 / Lambert Colorado SP, Northern Zone (501), US feet
True vertical depths are referenced to PRECISION DRILLING (25) (RKB)	North Reference: True north
Measured depths are referenced to PRECISION DRILLING (25) (RKB)	Scale: True distance
PRECISION DRILLING (25) (RKB) to Mean Sea Level: 4777 feet	Depths are in feet
Mean Sea Level to Mud line (At Slot: SLOT#19 DONN 31N-20C-L (858FNL & 251FEL, SEC.21)): 0 feet	Created by: doddiana on 2017-08-25
Coordinates are in feet referenced to Slot	Database: Denver DB

Facility Name	Grid East (US R)	Grid North (US R)	Latitude	Longitude
SEC.21-TDN-R66W	3201871.604	1417148.268	40°28'34.342"N	104°46'27.660"W
<div> <div>Slot</div> <div>Local N (R)</div> <div>Local E (R)</div> </div>	Grid East (US R)	Grid North (US R)	Latitude	Longitude
SLOT#19 DONN 31N-20C-L (856FNL & 251FEL, SEC.21)	943.90	24.20	3201888.081	1418092.304
			40°28'43.669"N	104°46'27.347"W
PRECISION DRILLING (25) (RKB) to Mud line (At Slot: SLOT#19 DONN 31N-20C-L (856FNL & 251FEL, SEC.21))				47778
Mean Sea Level to Mud line (At Slot: SLOT#19 DONN 31N-20C-L (856FNL & 251FEL, SEC.21))				OR
PRECISION DRILLING (25) (RKB) to Mean Sea Level				47778

Start MD (ft)	End MD (ft)	Tool	Model	Log Name/Comment	Wellbore
25.00	1775.00	BHI NavTrak	Custom BHI NavTrak (Standard Rotating+Axial Cor) (Rockies 0.03GI model)		DOMN 31N-20CL PIBW
1775.00	17840.66	BHI AutoTrak Cune	Custom BHI AutoTrak Cune (FR1, Short) (Rockies 0.03GI model)		DOMN 31N-20CL PIBW



~VERSION INFORMATION

VERS. 2.0 : CWLS LOG ASCII STANDARD-VERSION 2.0

WRAP. NO : ASCII DATA SECTION CONTAINS ONE ROW PER WELLPATH STATION

~WELL INFORMATION

#MNEM	.UNITS	DATA	:DESCRIPTION
#----	.-----	----	:-----
STRT	.ft	0.00	:START MD
STOP	.ft	17840.66	:STOP MD
STEP	.ft	0.0	:STEP (non-uniform increment)
NULL	.	-999.99	:NULL
COMP	.	SRC ENERGY	:OPERATOR
WELL	.	DONN 31N-20C-L	:WELL
FLD	.	WELD COUNTY (NAD83,TRUE NORTH)	:FIELD
LOC	.	COLORADO	:AREA (aka: Location)
CNTY	.	N/A	:COUNTY
STAT	.	N/A	:STATE
CTRY	.	N/A	:COUNTRY
SRVC	.	Baker Hughes	:CONTRACTOR
DATE	.	08/16/2017	:LOG REV DATE
API	.		:API NUMBER

~OTHER INFORMATION

#Software: WellArchitect(R) Version 5.1

#MNEM	.UNITS	DATA	:DESCRIPTION
#----	.-----	----	:-----
WPTYPE	.	PLANNED WELLPATH	:WELLPATH TYPE
FACILITY	.	SEC.21-T06N-R66W	:FACILITY
SLOT	.	SLOT#19 DONN 31N-20C-L (858'FNL & 251'FEL, SEC.21)	:SLOT
WELLBORE	.	DONN 31N-20C-L PWB	:WELLBORE
WELLPATH	.	DONN 31N-20C-L PWP (REV-B.0)	:WELLPATH
MDREFPT	.	PRECISION DRILLING (25') (RKB)	:MD REFERENCE POINT
TVDREFPT	.	PRECISION DRILLING (25') (RKB)	:TVD REFERENCE POINT
LCLREFPT	.	Slot	:LOCAL COORDINATE
REFERENCE PT			
VSAZIMUTH.deg		266.28	:VERTICAL SECTION
AZIMUTH			
VSORIGN .ft		0.00	:VERTICAL SECTION
ORIGIN NORTH			
VSORIGE .ft		0.00	:VERTICAL SECTION
ORIGIN EAST			

~CURVE (WELLPATH) INFORMATION

#MNEM	.UNITS	:DESCRIPTION
#----	.-----	:-----
DEPT	.ft	:MEASURED DEPTH
INC	.deg	:INCLINATION
AZI	.deg	:AZIMUTH
TVD	.ft	:TRUE VERTICAL DEPTH
SECT	.ft	:CROSS SECTION (CURTAIN/VERTICAL)
LOCALN	.ft	:LOCAL NORTH

DONN_31N-20C-L_PWP__REV-B.0_.las

LOCALE .ft :LOCAL EAST
 LAT .deg :LATITUDE
 LONG .deg :LONGITUDE
 DLS .deg/100ft :DOGLEG SEVERITY

~ASCII DATA

0.00	0.00	116.06	0.00	0.00	0.00	0.00	40.4787970
-104.7742630	0.00						
25.00	0.00	116.06	25.00	0.00	0.00	0.00	40.4787970
-104.7742630	0.00						
125.00	0.00	116.06	125.00	0.00	0.00	0.00	40.4787970
-104.7742630	0.00						
200.00	0.00	116.06	200.00	0.00	0.00	0.00	40.4787970
-104.7742630	0.00						
225.00	0.50	116.06	225.00	-0.09	-0.05	0.10	40.4787969
-104.7742626	2.00						
325.00	2.50	116.06	324.96	-2.37	-1.20	2.45	40.4787937
-104.7742542	2.00						
425.00	4.50	116.06	424.77	-7.67	-3.88	7.93	40.4787864
-104.7742345	2.00						
525.00	6.50	116.06	524.30	-15.98	-8.09	16.54	40.4787748
-104.7742035	2.00						
589.45	7.79	116.06	588.25	-22.94	-11.61	23.75	40.4787651
-104.7741776	2.00						
625.00	7.79	116.06	623.47	-27.12	-13.73	28.07	40.4787593
-104.7741621	0.00						
725.00	7.79	116.06	722.55	-38.89	-19.68	40.25	40.4787430
-104.7741183	0.00						
825.00	7.79	116.06	821.63	-50.65	-25.63	52.42	40.4787266
-104.7740746	0.00						
925.00	7.79	116.06	920.71	-62.41	-31.58	64.60	40.4787103
-104.7740308	0.00						
1025.00	7.79	116.06	1019.78	-74.18	-37.54	76.77	40.4786940
-104.7739870	0.00						
1125.00	7.79	116.06	1118.86	-85.94	-43.49	88.95	40.4786776
-104.7739433	0.00						
1225.00	7.79	116.06	1217.94	-97.71	-49.44	101.12	40.4786613
-104.7738995	0.00						
1325.00	7.79	116.06	1317.02	-109.47	-55.40	113.30	40.4786449
-104.7738557	0.00						
1425.00	7.79	116.06	1416.09	-121.23	-61.35	125.48	40.4786286
-104.7738120	0.00						
1525.00	7.79	116.06	1515.17	-133.00	-67.30	137.65	40.4786123
-104.7737682	0.00						
1625.00	7.79	116.06	1614.25	-144.76	-73.25	149.83	40.4785959
-104.7737244	0.00						
1725.00	7.79	116.06	1713.32	-156.52	-79.21	162.00	40.4785796
-104.7736807	0.00						
1825.00	7.79	116.06	1812.40	-168.29	-85.16	174.18	40.4785632
-104.7736369	0.00						
1925.00	7.79	116.06	1911.48	-180.05	-91.11	186.35	40.4785469
-104.7735931	0.00						

DONN_31N-20C-L_PWP__REV-B.0_.las

2025.00	7.79	116.06	2010.56	-191.81	-97.07	198.53	40.4785306
-104.7735494	0.00						
2125.00	7.79	116.06	2109.63	-203.58	-103.02	210.70	40.4785142
-104.7735056	0.00						
2225.00	7.79	116.06	2208.71	-215.34	-108.97	222.88	40.4784979
-104.7734619	0.00						
2325.00	7.79	116.06	2307.79	-227.10	-114.92	235.05	40.4784815
-104.7734181	0.00						
2425.00	7.79	116.06	2406.87	-238.87	-120.88	247.23	40.4784652
-104.7733743	0.00						
2525.00	7.79	116.06	2505.94	-250.63	-126.83	259.40	40.4784489
-104.7733306	0.00						
2625.00	7.79	116.06	2605.02	-262.39	-132.78	271.58	40.4784325
-104.7732868	0.00						
2725.00	7.79	116.06	2704.10	-274.16	-138.74	283.75	40.4784162
-104.7732430	0.00						
2825.00	7.79	116.06	2803.18	-285.92	-144.69	295.93	40.4783998
-104.7731993	0.00						
2925.00	7.79	116.06	2902.25	-297.69	-150.64	308.10	40.4783835
-104.7731555	0.00						
3025.00	7.79	116.06	3001.33	-309.45	-156.59	320.28	40.4783672
-104.7731117	0.00						
3125.00	7.79	116.06	3100.41	-321.21	-162.55	332.45	40.4783508
-104.7730680	0.00						
3225.00	7.79	116.06	3199.49	-332.98	-168.50	344.63	40.4783345
-104.7730242	0.00						
3325.00	7.79	116.06	3298.56	-344.74	-174.45	356.81	40.4783181
-104.7729804	0.00						
3425.00	7.79	116.06	3397.64	-356.50	-180.40	368.98	40.4783018
-104.7729367	0.00						
3525.00	7.79	116.06	3496.72	-368.27	-186.36	381.16	40.4782855
-104.7728929	0.00						
3625.00	7.79	116.06	3595.79	-380.03	-192.31	393.33	40.4782691
-104.7728492	0.00						
3725.00	7.79	116.06	3694.87	-391.79	-198.26	405.51	40.4782528
-104.7728054	0.00						
3825.00	7.79	116.06	3793.95	-403.56	-204.22	417.68	40.4782364
-104.7727616	0.00						
3925.00	7.79	116.06	3893.03	-415.32	-210.17	429.86	40.4782201
-104.7727179	0.00						
4025.00	7.79	116.06	3992.10	-427.08	-216.12	442.03	40.4782038
-104.7726741	0.00						
4125.00	7.79	116.06	4091.18	-438.85	-222.07	454.21	40.4781874
-104.7726303	0.00						
4225.00	7.79	116.06	4190.26	-450.61	-228.03	466.38	40.4781711
-104.7725866	0.00						
4325.00	7.79	116.06	4289.34	-462.37	-233.98	478.56	40.4781547
-104.7725428	0.00						
4425.00	7.79	116.06	4388.41	-474.14	-239.93	490.73	40.4781384
-104.7724990	0.00						
4525.00	7.79	116.06	4487.49	-485.90	-245.89	502.91	40.4781221
-104.7724553	0.00						

DONN_31N-20C-L_PWP__REV-B.0_.las

4625.00	7.79	116.06	4586.57	-497.67	-251.84	515.08	40.4781057
-104.7724115	0.00						
4725.00	7.79	116.06	4685.65	-509.43	-257.79	527.26	40.4780894
-104.7723677	0.00						
4825.00	7.79	116.06	4784.72	-521.19	-263.74	539.43	40.4780730
-104.7723240	0.00						
4925.00	7.79	116.06	4883.80	-532.96	-269.70	551.61	40.4780567
-104.7722802	0.00						
5025.00	7.79	116.06	4982.88	-544.72	-275.65	563.78	40.4780404
-104.7722365	0.00						
5125.00	7.79	116.06	5081.96	-556.48	-281.60	575.96	40.4780240
-104.7721927	0.00						
5225.00	7.79	116.06	5181.03	-568.25	-287.56	588.14	40.4780077
-104.7721489	0.00						
5325.00	7.79	116.06	5280.11	-580.01	-293.51	600.31	40.4779913
-104.7721052	0.00						
5425.00	7.79	116.06	5379.19	-591.77	-299.46	612.49	40.4779750
-104.7720614	0.00						
5525.00	7.79	116.06	5478.27	-603.54	-305.41	624.66	40.4779587
-104.7720176	0.00						
5625.00	7.79	116.06	5577.34	-615.30	-311.37	636.84	40.4779423
-104.7719739	0.00						
5725.00	7.79	116.06	5676.42	-627.06	-317.32	649.01	40.4779260
-104.7719301	0.00						
5825.00	7.79	116.06	5775.50	-638.83	-323.27	661.19	40.4779096
-104.7718863	0.00						
5925.00	7.79	116.06	5874.57	-650.59	-329.23	673.36	40.4778933
-104.7718426	0.00						
6025.00	7.79	116.06	5973.65	-662.36	-335.18	685.54	40.4778770
-104.7717988	0.00						
6125.00	7.79	116.06	6072.73	-674.12	-341.13	697.71	40.4778606
-104.7717551	0.00						
6225.00	7.79	116.06	6171.81	-685.88	-347.08	709.89	40.4778443
-104.7717113	0.00						
6325.00	7.79	116.06	6270.88	-697.65	-353.04	722.06	40.4778279
-104.7716675	0.00						
6425.00	7.79	116.06	6369.96	-709.41	-358.99	734.24	40.4778116
-104.7716238	0.00						
6435.36	7.79	116.06	6380.22	-710.63	-359.61	735.50	40.4778099
-104.7716192	0.00						
6525.00	3.79	196.46	6469.50	-714.89	-365.12	740.13	40.4777948
-104.7716026	9.00						
6625.00	10.77	249.29	6568.72	-704.79	-371.61	730.43	40.4777770
-104.7716375	9.00						
6725.00	19.48	258.37	6665.17	-679.28	-378.29	705.30	40.4777586
-104.7717278	9.00						
6825.00	28.37	261.93	6756.49	-638.99	-385.01	665.36	40.4777402
-104.7718713	9.00						
6925.00	37.31	263.88	6840.43	-584.91	-391.59	611.60	40.4777221
-104.7720646	9.00						
7025.00	46.27	265.17	6914.91	-518.37	-397.87	545.33	40.4777049
-104.7723028	9.00						

DONN_31N-20C-L_PWP__REV-B.0_.las

7125.00	55.24	266.12	6978.12	-441.02	-403.71	468.19	40.4776889
-104.7725801	9.00						
7225.00	64.21	266.88	7028.48	-354.74	-408.95	382.07	40.4776745
-104.7728896	9.00						
7325.00	73.19	267.54	7064.76	-261.68	-413.46	289.11	40.4776621
-104.7732238	9.00						
7425.00	82.18	268.13	7086.07	-164.12	-417.15	191.58	40.4776520
-104.7735744	9.00						
7515.90	90.34	268.65	7092.00	-73.55	-419.69	100.99	40.4776450
-104.7739000	9.00						
7525.00	90.34	268.65	7091.95	-64.46	-419.91	91.89	40.4776444
-104.7739327	0.00						
7625.00	90.34	268.65	7091.35	35.45	-422.27	-8.08	40.4776379
-104.7742921	0.00						
7725.00	90.34	268.65	7090.76	135.37	-424.63	-108.05	40.4776314
-104.7746514	0.00						
7825.00	90.34	268.65	7090.17	235.28	-426.99	-208.02	40.4776250
-104.7750107	0.00						
7925.00	90.34	268.65	7089.58	335.19	-429.35	-307.99	40.4776185
-104.7753701	0.00						
8025.00	90.34	268.65	7088.99	435.11	-431.71	-407.96	40.4776120
-104.7757294	0.00						
8125.00	90.34	268.65	7088.40	535.02	-434.07	-507.94	40.4776055
-104.7760888	0.00						
8225.00	90.34	268.65	7087.80	634.93	-436.44	-607.91	40.4775990
-104.7764481	0.00						
8325.00	90.34	268.65	7087.21	734.84	-438.80	-707.88	40.4775925
-104.7768075	0.00						
8425.00	90.34	268.65	7086.62	834.76	-441.16	-807.85	40.4775860
-104.7771668	0.00						
8525.00	90.34	268.65	7086.03	934.67	-443.52	-907.82	40.4775796
-104.7775262	0.00						
8625.00	90.34	268.65	7085.44	1034.58	-445.88	-1007.79	40.4775731
-104.7778855	0.00						
8725.00	90.34	268.65	7084.85	1134.50	-448.24	-1107.76	40.4775666
-104.7782448	0.00						
8825.00	90.34	268.65	7084.25	1234.41	-450.60	-1207.73	40.4775601
-104.7786042	0.00						
8925.00	90.34	268.65	7083.66	1334.32	-452.96	-1307.70	40.4775536
-104.7789635	0.00						
9025.00	90.34	268.65	7083.07	1434.24	-455.33	-1407.67	40.4775471
-104.7793229	0.00						
9125.00	90.34	268.65	7082.48	1534.15	-457.69	-1507.64	40.4775406
-104.7796822	0.00						
9225.00	90.34	268.65	7081.89	1634.06	-460.05	-1607.61	40.4775341
-104.7800416	0.00						
9325.00	90.34	268.65	7081.30	1733.98	-462.41	-1707.58	40.4775276
-104.7804009	0.00						
9425.00	90.34	268.65	7080.70	1833.89	-464.77	-1807.55	40.4775211
-104.7807603	0.00						
9525.00	90.34	268.65	7080.11	1933.80	-467.13	-1907.52	40.4775146
-104.7811196	0.00						

DONN_31N-20C-L_PWP__REV-B.0_.las

9625.00	90.34	268.65	7079.52	2033.71	-469.49	-2007.49	40.4775081
-104.7814789	0.00						
9725.00	90.34	268.65	7078.93	2133.63	-471.85	-2107.46	40.4775016
-104.7818383	0.00						
9825.00	90.34	268.65	7078.34	2233.54	-474.21	-2207.43	40.4774951
-104.7821976	0.00						
9925.00	90.34	268.65	7077.75	2333.45	-476.58	-2307.40	40.4774886
-104.7825570	0.00						
10025.00	90.34	268.65	7077.15	2433.37	-478.94	-2407.37	40.4774821
-104.7829163	0.00						
10125.00	90.34	268.65	7076.56	2533.28	-481.30	-2507.34	40.4774756
-104.7832757	0.00						
10225.00	90.34	268.65	7075.97	2633.19	-483.66	-2607.31	40.4774690
-104.7836350	0.00						
10325.00	90.34	268.65	7075.38	2733.11	-486.02	-2707.28	40.4774625
-104.7839943	0.00						
10425.00	90.34	268.65	7074.79	2833.02	-488.38	-2807.25	40.4774560
-104.7843537	0.00						
10515.90	90.34	268.65	7074.25	2923.84	-490.53	-2898.12	40.4774501
-104.7846803	0.00						
10525.00	90.34	268.92	7074.20	2932.93	-490.72	-2907.22	40.4774496
-104.7847130	3.00						
10625.00	90.34	271.92	7073.60	3032.66	-489.99	-3007.21	40.4774515
-104.7850724	3.00						
10725.00	90.34	274.92	7073.01	3131.87	-484.02	-3107.02	40.4774679
-104.7854312	3.00						
10825.00	90.34	277.92	7072.41	3230.29	-472.84	-3206.38	40.4774985
-104.7857883	3.00						
10910.99	90.34	280.50	7071.90	3314.10	-459.08	-3291.25	40.4775363
-104.7860934	3.00						
10925.00	90.34	280.50	7071.82	3327.68	-456.53	-3305.02	40.4775433
-104.7861429	0.00						
11025.00	90.34	280.50	7071.23	3424.61	-438.30	-3403.35	40.4775933
-104.7864964	0.00						
11110.99	90.34	280.50	7070.72	3507.97	-422.63	-3487.90	40.4776362
-104.7868003	0.00						
11125.00	90.34	280.08	7070.64	3521.56	-420.13	-3501.68	40.4776431
-104.7868498	3.00						
11225.00	90.34	277.08	7070.04	3619.25	-405.22	-3600.55	40.4776840
-104.7872052	3.00						
11325.00	90.34	274.08	7069.45	3717.92	-395.49	-3700.06	40.4777107
-104.7875629	3.00						
11425.00	90.34	271.08	7068.86	3817.31	-390.99	-3799.95	40.4777230
-104.7879220	3.00						
11460.98	90.34	270.00	7068.64	3853.19	-390.65	-3835.93	40.4777239
-104.7880513	3.00						
11525.00	90.34	270.00	7068.27	3917.07	-390.65	-3899.94	40.4777239
-104.7882814	0.00						
11625.00	90.34	270.00	7067.67	4016.86	-390.65	-3999.94	40.4777238
-104.7886409	0.00						
11725.00	90.34	270.00	7067.08	4116.65	-390.65	-4099.94	40.4777238
-104.7890003	0.00						

DONN_31N-20C-L_PWP__REV-B.0_.las

11825.00	90.34	270.00	7066.49	4216.43	-390.65	-4199.94	40.4777237
-104.7893598	0.00						
11925.00	90.34	270.00	7065.90	4316.22	-390.65	-4299.94	40.4777237
-104.7897192	0.00						
12025.00	90.34	270.00	7065.31	4416.01	-390.65	-4399.94	40.4777236
-104.7900786	0.00						
12125.00	90.34	270.00	7064.72	4515.80	-390.65	-4499.93	40.4777236
-104.7904381	0.00						
12225.00	90.34	270.00	7064.12	4615.58	-390.65	-4599.93	40.4777235
-104.7907975	0.00						
12325.00	90.34	270.00	7063.53	4715.37	-390.65	-4699.93	40.4777235
-104.7911570	0.00						
12425.00	90.34	270.00	7062.94	4815.16	-390.65	-4799.93	40.4777234
-104.7915164	0.00						
12525.00	90.34	270.00	7062.35	4914.95	-390.65	-4899.93	40.4777234
-104.7918759	0.00						
12625.00	90.34	270.00	7061.76	5014.73	-390.65	-4999.93	40.4777233
-104.7922353	0.00						
12725.00	90.34	270.00	7061.17	5114.52	-390.65	-5099.92	40.4777233
-104.7925948	0.00						
12825.00	90.34	270.00	7060.57	5214.31	-390.65	-5199.92	40.4777232
-104.7929542	0.00						
12925.00	90.34	270.00	7059.98	5314.10	-390.65	-5299.92	40.4777231
-104.7933137	0.00						
13025.00	90.34	270.00	7059.39	5413.89	-390.65	-5399.92	40.4777231
-104.7936731	0.00						
13125.00	90.34	270.00	7058.80	5513.67	-390.65	-5499.92	40.4777230
-104.7940325	0.00						
13225.00	90.34	270.00	7058.21	5613.46	-390.65	-5599.91	40.4777230
-104.7943920	0.00						
13325.00	90.34	270.00	7057.62	5713.25	-390.65	-5699.91	40.4777229
-104.7947514	0.00						
13425.00	90.34	270.00	7057.02	5813.04	-390.65	-5799.91	40.4777228
-104.7951109	0.00						
13525.00	90.34	270.00	7056.43	5912.82	-390.65	-5899.91	40.4777228
-104.7954703	0.00						
13625.00	90.34	270.00	7055.84	6012.61	-390.65	-5999.91	40.4777227
-104.7958298	0.00						
13725.00	90.34	270.00	7055.25	6112.40	-390.65	-6099.91	40.4777226
-104.7961892	0.00						
13825.00	90.34	270.00	7054.66	6212.19	-390.65	-6199.90	40.4777226
-104.7965487	0.00						
13925.00	90.34	270.00	7054.07	6311.97	-390.65	-6299.90	40.4777225
-104.7969081	0.00						
13960.98	90.34	270.00	7053.85	6347.88	-390.65	-6335.89	40.4777225
-104.7970375	0.00						
14025.00	90.34	268.08	7053.47	6411.82	-391.73	-6399.89	40.4777195
-104.7972675	3.00						
14027.65	90.34	268.00	7053.46	6414.47	-391.82	-6402.54	40.4777192
-104.7972770	3.00						
14125.00	90.34	268.00	7052.88	6511.77	-395.22	-6499.83	40.4777098
-104.7976267	0.00						

DONN_31N-20C-L_PWP__REV-B.0_.las

14225.00	90.34	268.00	7052.29	6611.73	-398.71	-6599.76	40.4777002
-104.7979860	0.00						
14325.00	90.34	268.00	7051.70	6711.68	-402.20	-6699.70	40.4776905
-104.7983452	0.00						
14425.00	90.34	268.00	7051.11	6811.63	-405.69	-6799.64	40.4776809
-104.7987044	0.00						
14525.00	90.34	268.00	7050.52	6911.59	-409.18	-6899.58	40.4776712
-104.7990636	0.00						
14625.00	90.34	268.00	7049.92	7011.54	-412.67	-6999.51	40.4776616
-104.7994229	0.00						
14725.00	90.34	268.00	7049.33	7111.49	-416.15	-7099.45	40.4776519
-104.7997821	0.00						
14825.00	90.34	268.00	7048.74	7211.45	-419.64	-7199.39	40.4776422
-104.8001413	0.00						
14925.00	90.34	268.00	7048.15	7311.40	-423.13	-7299.32	40.4776326
-104.8005005	0.00						
15025.00	90.34	268.00	7047.56	7411.35	-426.62	-7399.26	40.4776229
-104.8008597	0.00						
15125.00	90.34	268.00	7046.97	7511.31	-430.11	-7499.20	40.4776133
-104.8012190	0.00						
15225.00	90.34	268.00	7046.37	7611.26	-433.60	-7599.14	40.4776036
-104.8015782	0.00						
15325.00	90.34	268.00	7045.78	7711.21	-437.09	-7699.07	40.4775939
-104.8019374	0.00						
15425.00	90.34	268.00	7045.19	7811.17	-440.58	-7799.01	40.4775843
-104.8022966	0.00						
15525.00	90.34	268.00	7044.60	7911.12	-444.07	-7898.95	40.4775746
-104.8026559	0.00						
15625.00	90.34	268.00	7044.01	8011.07	-447.56	-7998.89	40.4775649
-104.8030151	0.00						
15725.00	90.34	268.00	7043.42	8111.03	-451.05	-8098.82	40.4775553
-104.8033743	0.00						
15825.00	90.34	268.00	7042.82	8210.98	-454.54	-8198.76	40.4775456
-104.8037335	0.00						
15925.00	90.34	268.00	7042.23	8310.93	-458.03	-8298.70	40.4775359
-104.8040927	0.00						
16025.00	90.34	268.00	7041.64	8410.89	-461.52	-8398.64	40.4775263
-104.8044520	0.00						
16027.65	90.34	268.00	7041.62	8413.53	-461.62	-8401.28	40.4775260
-104.8044615	0.00						
16125.00	90.34	265.08	7041.05	8510.87	-467.49	-8498.44	40.4775098
-104.8048107	3.00						
16180.13	90.34	263.43	7040.73	8565.97	-473.01	-8553.30	40.4774946
-104.8050079	3.00						
16225.00	90.34	263.43	7040.46	8610.78	-478.15	-8597.87	40.4774804
-104.8051681	0.00						
16325.00	90.34	263.43	7039.88	8710.65	-489.60	-8697.21	40.4774489
-104.8055251	0.00						
16425.00	90.34	263.43	7039.29	8810.53	-501.05	-8796.55	40.4774174
-104.8058822	0.00						
16525.00	90.34	263.43	7038.71	8910.40	-512.50	-8895.89	40.4773859
-104.8062393	0.00						

DONN_31N-20C-L_PWP__REV-B.0_.las

16625.00	90.34	263.43	7038.12	9010.27	-523.95	-8995.23	40.4773543
-104.8065963	0.00						
16725.00	90.34	263.43	7037.54	9110.15	-535.40	-9094.57	40.4773228
-104.8069534	0.00						
16825.00	90.34	263.43	7036.95	9210.02	-546.85	-9193.91	40.4772913
-104.8073105	0.00						
16925.00	90.34	263.43	7036.36	9309.90	-558.30	-9293.25	40.4772598
-104.8076675	0.00						
17025.00	90.34	263.43	7035.78	9409.77	-569.74	-9392.59	40.4772282
-104.8080246	0.00						
17125.00	90.34	263.43	7035.19	9509.64	-581.19	-9491.93	40.4771967
-104.8083817	0.00						
17225.00	90.34	263.43	7034.61	9609.52	-592.64	-9591.27	40.4771652
-104.8087387	0.00						
17325.00	90.34	263.43	7034.02	9709.39	-604.09	-9690.62	40.4771336
-104.8090958	0.00						
17425.00	90.34	263.43	7033.43	9809.27	-615.54	-9789.96	40.4771021
-104.8094529	0.00						
17525.00	90.34	263.43	7032.85	9909.14	-626.99	-9889.30	40.4770706
-104.8098099	0.00						
17625.00	90.34	263.43	7032.26	10009.01	-638.44	-9988.64	40.4770390
-104.8101670	0.00						
17725.00	90.34	263.43	7031.68	10108.89	-649.89	-10087.98	40.4770075
-104.8105240	0.00						
17825.00	90.34	263.43	7031.09	10208.76	-661.34	-10187.32	40.4769759
-104.8108811	0.00						
17840.66	90.34	263.43	7031.00	10224.40	-663.13	-10202.87	40.4769710
-104.8109370	0.00						

Planned Wellpath Report

DONN 31N-20C-L PWP (REV-B.0)

Page 1 of 6



REFERENCE WELLPATH IDENTIFICATION

Operator	SRC ENERGY	Slot	SLOT#19 DONN 31N-20C-L (858'FNL & 251'FEL, SEC.21)
Area	COLORADO	Well	DONN 31N-20C-L
Field	WELD COUNTY (NAD83,TRUE NORTH)	Wellbore	DONN 31N-20C-L PWB
Facility	SEC.21-T06N-R66W		

REPORT SETUP INFORMATION

Projection System	NAD83 / Lambert Colorado SP, Northern Zone (501), US feet	Software System	WellArchitect® 5.1
North Reference	True	User	Doddanna
Scale	0.999965	Report Generated	8/25/2017 at 10:43:15 AM
Convergence at slot	0.47° East	Database/Source file	Denver DB/DONN_31N-20C-L_PWP__REV-B.0_.xml

WELLPATH LOCATION

	Local coordinates		Grid coordinates		Geographic coordinates	
	North[ft]	East[ft]	Easting[US ft]	Northing[US ft]	Latitude	Longitude
Slot Location	943.90	24.20	3201888.08	1418092.30	40°28'43.669"N	104°46'27.347"W
Facility Reference Pt			3201871.60	1417148.27	40°28'34.342"N	104°46'27.660"W
Field Reference Pt			3171284.48	1426358.81	40°30'07.643"N	104°53'02.634"W

WELLPATH DATUM

Calculation method	Minimum curvature	PRECISION DRILLING (25') (RKB) to Facility Vertical Datum	4777.00ft
Horizontal Reference Pt	Slot	PRECISION DRILLING (25') (RKB) to Mean Sea Level	4777.00ft
Vertical Reference Pt	PRECISION DRILLING (25') (RKB)	PRECISION DRILLING (25') (RKB) to Mud Line at Slot (SLOT#19 DONN 31N-20C-L (858'FNL & 251'FEL, SEC.21))	4777.00ft
MD Reference Pt	PRECISION DRILLING (25') (RKB)	Section Origin	N 0.00, E 0.00 ft
Field Vertical Reference	Mean Sea Level	Section Azimuth	266.28°

Planned Wellpath Report

DONN 31N-20C-L PWP (REV-B.0)

Page 2 of 6



REFERENCE WELLPATH IDENTIFICATION

Operator	SRC ENERGY	Slot	SLOT#19 DONN 31N-20C-L (858'FNL & 251'FEL, SEC.21)
Area	COLORADO	Well	DONN 31N-20C-L
Field	WELD COUNTY (NAD83,TRUE NORTH)	Wellbore	DONN 31N-20C-L PWB
Facility	SEC.21-T06N-R66W		

WELLPATH DATA (193 stations) † = interpolated/extrapolated station

MD [ft]	Inclination [°]	Azimuth [°]	TVD [ft]	Vert Sect [ft]	North [ft]	East [ft]	DLS [°/100ft]	Comments
0.00†	0.000	116.055	0.00	0.00	0.00	0.00	0.00	
25.00	0.000	116.055	25.00	0.00	0.00	0.00	0.00	Tie On
125.00†	0.000	116.055	125.00	0.00	0.00	0.00	0.00	
200.00	0.000	116.055	200.00	0.00	0.00	0.00	0.00	End of Tangent
225.00†	0.500	116.055	225.00	-0.09	-0.05	0.10	2.00	
325.00†	2.500	116.055	324.96	-2.37	-1.20	2.45	2.00	
425.00†	4.500	116.055	424.77	-7.67	-3.88	7.93	2.00	
525.00†	6.500	116.055	524.30	-15.98	-8.09	16.54	2.00	
589.45	7.789	116.055	588.25	-22.94	-11.61	23.75	2.00	End of Build
625.00†	7.789	116.055	623.47	-27.12	-13.73	28.07	0.00	
725.00†	7.789	116.055	722.55	-38.89	-19.68	40.25	0.00	
825.00†	7.789	116.055	821.63	-50.65	-25.63	52.42	0.00	
925.00†	7.789	116.055	920.71	-62.41	-31.58	64.60	0.00	
1025.00†	7.789	116.055	1019.78	-74.18	-37.54	76.77	0.00	
1125.00†	7.789	116.055	1118.86	-85.94	-43.49	88.95	0.00	
1225.00†	7.789	116.055	1217.94	-97.71	-49.44	101.12	0.00	
1325.00†	7.789	116.055	1317.02	-109.47	-55.40	113.30	0.00	
1425.00†	7.789	116.055	1416.09	-121.23	-61.35	125.48	0.00	
1525.00†	7.789	116.055	1515.17	-133.00	-67.30	137.65	0.00	
1625.00†	7.789	116.055	1614.25	-144.76	-73.25	149.83	0.00	
1725.00†	7.789	116.055	1713.32	-156.52	-79.21	162.00	0.00	
1825.00†	7.789	116.055	1812.40	-168.29	-85.16	174.18	0.00	
1925.00†	7.789	116.055	1911.48	-180.05	-91.11	186.35	0.00	
2025.00†	7.789	116.055	2010.56	-191.81	-97.07	198.53	0.00	
2125.00†	7.789	116.055	2109.63	-203.58	-103.02	210.70	0.00	
2225.00†	7.789	116.055	2208.71	-215.34	-108.97	222.88	0.00	
2325.00†	7.789	116.055	2307.79	-227.10	-114.92	235.05	0.00	
2425.00†	7.789	116.055	2406.87	-238.87	-120.88	247.23	0.00	
2525.00†	7.789	116.055	2505.94	-250.63	-126.83	259.40	0.00	
2625.00†	7.789	116.055	2605.02	-262.39	-132.78	271.58	0.00	
2725.00†	7.789	116.055	2704.10	-274.16	-138.74	283.75	0.00	
2825.00†	7.789	116.055	2803.18	-285.92	-144.69	295.93	0.00	
2925.00†	7.789	116.055	2902.25	-297.69	-150.64	308.10	0.00	
3025.00†	7.789	116.055	3001.33	-309.45	-156.59	320.28	0.00	
3125.00†	7.789	116.055	3100.41	-321.21	-162.55	332.45	0.00	
3225.00†	7.789	116.055	3199.49	-332.98	-168.50	344.63	0.00	
3325.00†	7.789	116.055	3298.56	-344.74	-174.45	356.81	0.00	
3425.00†	7.789	116.055	3397.64	-356.50	-180.40	368.98	0.00	
3525.00†	7.789	116.055	3496.72	-368.27	-186.36	381.16	0.00	
3625.00†	7.789	116.055	3595.79	-380.03	-192.31	393.33	0.00	
3725.00†	7.789	116.055	3694.87	-391.79	-198.26	405.51	0.00	
3825.00†	7.789	116.055	3793.95	-403.56	-204.22	417.68	0.00	
3925.00†	7.789	116.055	3893.03	-415.32	-210.17	429.86	0.00	
4025.00†	7.789	116.055	3992.10	-427.08	-216.12	442.03	0.00	
4125.00†	7.789	116.055	4091.18	-438.85	-222.07	454.21	0.00	

Planned Wellpath Report

DONN 31N-20C-L PWP (REV-B.0)

Page 3 of 6



REFERENCE WELLPATH IDENTIFICATION

Operator	SRC ENERGY	Slot	SLOT#19 DONN 31N-20C-L (858'FNL & 251'FEL, SEC.21)
Area	COLORADO	Well	DONN 31N-20C-L
Field	WELD COUNTY (NAD83,TRUE NORTH)	Wellbore	DONN 31N-20C-L PWB
Facility	SEC.21-T06N-R66W		

WELLPATH DATA (193 stations) † = interpolated/extrapolated station

MD [ft]	Inclination [°]	Azimuth [°]	TVD [ft]	Vert Sect [ft]	North [ft]	East [ft]	DLS [°/100ft]	Comments
4225.00†	7.789	116.055	4190.26	-450.61	-228.03	466.38	0.00	
4325.00†	7.789	116.055	4289.34	-462.37	-233.98	478.56	0.00	
4425.00†	7.789	116.055	4388.41	-474.14	-239.93	490.73	0.00	
4525.00†	7.789	116.055	4487.49	-485.90	-245.89	502.91	0.00	
4625.00†	7.789	116.055	4586.57	-497.67	-251.84	515.08	0.00	
4725.00†	7.789	116.055	4685.65	-509.43	-257.79	527.26	0.00	
4825.00†	7.789	116.055	4784.72	-521.19	-263.74	539.43	0.00	
4925.00†	7.789	116.055	4883.80	-532.96	-269.70	551.61	0.00	
5025.00†	7.789	116.055	4982.88	-544.72	-275.65	563.78	0.00	
5125.00†	7.789	116.055	5081.96	-556.48	-281.60	575.96	0.00	
5225.00†	7.789	116.055	5181.03	-568.25	-287.56	588.14	0.00	
5325.00†	7.789	116.055	5280.11	-580.01	-293.51	600.31	0.00	
5425.00†	7.789	116.055	5379.19	-591.77	-299.46	612.49	0.00	
5525.00†	7.789	116.055	5478.27	-603.54	-305.41	624.66	0.00	
5625.00†	7.789	116.055	5577.34	-615.30	-311.37	636.84	0.00	
5725.00†	7.789	116.055	5676.42	-627.06	-317.32	649.01	0.00	
5825.00†	7.789	116.055	5775.50	-638.83	-323.27	661.19	0.00	
5925.00†	7.789	116.055	5874.57	-650.59	-329.23	673.36	0.00	
6025.00†	7.789	116.055	5973.65	-662.36	-335.18	685.54	0.00	
6125.00†	7.789	116.055	6072.73	-674.12	-341.13	697.71	0.00	
6225.00†	7.789	116.055	6171.81	-685.88	-347.08	709.89	0.00	
6325.00†	7.789	116.055	6270.88	-697.65	-353.04	722.06	0.00	
6425.00†	7.789	116.055	6369.96	-709.41	-358.99	734.24	0.00	
6435.36	7.789	116.055	6380.22	-710.63	-359.61	735.50	0.00	End of Tangent
6525.00†	3.787	196.458	6469.50	-714.89	-365.12	740.13	9.00	
6625.00†	10.773	249.287	6568.72	-704.79	-371.61	730.43	9.00	
6725.00†	19.483	258.366	6665.17	-679.28	-378.29	705.30	9.00	
6825.00†	28.370	261.925	6756.49	-638.99	-385.01	665.36	9.00	
6925.00†	37.308	263.882	6840.43	-584.91	-391.59	611.60	9.00	
7025.00†	46.268	265.170	6914.91	-518.37	-397.87	545.33	9.00	
7125.00†	55.238	266.119	6978.12	-441.02	-403.71	468.19	9.00	
7225.00†	64.214	266.881	7028.48	-354.74	-408.95	382.07	9.00	
7325.00†	73.193	267.535	7064.76	-261.68	-413.46	289.11	9.00	
7425.00†	82.175	268.129	7086.07	-164.12	-417.15	191.58	9.00	
7515.90	90.339	268.647	7092.00 ¹	-73.55	-419.69	100.99	9.00	End of 3D Arc
7525.00†	90.339	268.647	7091.95	-64.46	-419.91	91.89	0.00	
7625.00†	90.339	268.647	7091.35	35.45	-422.27	-8.08	0.00	
7725.00†	90.339	268.647	7090.76	135.37	-424.63	-108.05	0.00	
7825.00†	90.339	268.647	7090.17	235.28	-426.99	-208.02	0.00	
7925.00†	90.339	268.647	7089.58	335.19	-429.35	-307.99	0.00	
8025.00†	90.339	268.647	7088.99	435.11	-431.71	-407.96	0.00	
8125.00†	90.339	268.647	7088.40	535.02	-434.07	-507.94	0.00	
8225.00†	90.339	268.647	7087.80	634.93	-436.44	-607.91	0.00	
8325.00†	90.339	268.647	7087.21	734.84	-438.80	-707.88	0.00	
8425.00†	90.339	268.647	7086.62	834.76	-441.16	-807.85	0.00	

Planned Wellpath Report

DONN 31N-20C-L PWP (REV-B.0)

Page 4 of 6



REFERENCE WELLPATH IDENTIFICATION

Operator	SRC ENERGY	Slot	SLOT#19 DONN 31N-20C-L (858'FNL & 251'FEL, SEC.21)
Area	COLORADO	Well	DONN 31N-20C-L
Field	WELD COUNTY (NAD83,TRUE NORTH)	Wellbore	DONN 31N-20C-L PWB
Facility	SEC.21-T06N-R66W		

WELLPATH DATA (193 stations) † = interpolated/extrapolated station

MD [ft]	Inclination [°]	Azimuth [°]	TVD [ft]	Vert Sect [ft]	North [ft]	East [ft]	DLS [°/100ft]	Comments
8525.00†	90.339	268.647	7086.03	934.67	-443.52	-907.82	0.00	
8625.00†	90.339	268.647	7085.44	1034.58	-445.88	-1007.79	0.00	
8725.00†	90.339	268.647	7084.85	1134.50	-448.24	-1107.76	0.00	
8825.00†	90.339	268.647	7084.25	1234.41	-450.60	-1207.73	0.00	
8925.00†	90.339	268.647	7083.66	1334.32	-452.96	-1307.70	0.00	
9025.00†	90.339	268.647	7083.07	1434.24	-455.33	-1407.67	0.00	
9125.00†	90.339	268.647	7082.48	1534.15	-457.69	-1507.64	0.00	
9225.00†	90.339	268.647	7081.89	1634.06	-460.05	-1607.61	0.00	
9325.00†	90.339	268.647	7081.30	1733.98	-462.41	-1707.58	0.00	
9425.00†	90.339	268.647	7080.70	1833.89	-464.77	-1807.55	0.00	
9525.00†	90.339	268.647	7080.11	1933.80	-467.13	-1907.52	0.00	
9625.00†	90.339	268.647	7079.52	2033.71	-469.49	-2007.49	0.00	
9725.00†	90.339	268.647	7078.93	2133.63	-471.85	-2107.46	0.00	
9825.00†	90.339	268.647	7078.34	2233.54	-474.21	-2207.43	0.00	
9925.00†	90.339	268.647	7077.75	2333.45	-476.58	-2307.40	0.00	
10025.00†	90.339	268.647	7077.15	2433.37	-478.94	-2407.37	0.00	
10125.00†	90.339	268.647	7076.56	2533.28	-481.30	-2507.34	0.00	
10225.00†	90.339	268.647	7075.97	2633.19	-483.66	-2607.31	0.00	
10325.00†	90.339	268.647	7075.38	2733.11	-486.02	-2707.28	0.00	
10425.00†	90.339	268.647	7074.79	2833.02	-488.38	-2807.25	0.00	
10515.90	90.339	268.647	7074.25	2923.84	-490.53	-2898.12	0.00	End of Tangent
10525.00†	90.339	268.920	7074.20	2932.93	-490.72	-2907.22	3.00	
10625.00†	90.340	271.920	7073.60	3032.66	-489.99	-3007.21	3.00	
10725.00†	90.341	274.920	7073.01	3131.87	-484.02	-3107.02	3.00	
10825.00†	90.340	277.920	7072.41	3230.29	-472.84	-3206.38	3.00	
10910.99	90.339	280.500	7071.90	3314.10	-459.08	-3291.25	3.00	End of 3D Arc
10925.00†	90.339	280.500	7071.82	3327.68	-456.53	-3305.02	0.00	
11025.00†	90.339	280.500	7071.23	3424.61	-438.30	-3403.35	0.00	
11110.99	90.339	280.500	7070.72	3507.97	-422.63	-3487.90	0.00	End of Tangent
11125.00†	90.339	280.080	7070.64	3521.56	-420.13	-3501.68	3.00	
11225.00†	90.340	277.080	7070.04	3619.25	-405.22	-3600.55	3.00	
11325.00†	90.340	274.080	7069.45	3717.92	-395.49	-3700.06	3.00	
11425.00†	90.340	271.080	7068.86	3817.31	-390.99	-3799.95	3.00	
11460.98	90.339	270.000	7068.64	3853.19	-390.65	-3835.93	3.00	End of 3D Arc
11525.00†	90.339	270.000	7068.27	3917.07	-390.65	-3899.94	0.00	
11625.00†	90.339	270.000	7067.67	4016.86	-390.65	-3999.94	0.00	
11725.00†	90.339	270.000	7067.08	4116.65	-390.65	-4099.94	0.00	
11825.00†	90.339	270.000	7066.49	4216.43	-390.65	-4199.94	0.00	
11925.00†	90.339	270.000	7065.90	4316.22	-390.65	-4299.94	0.00	
12025.00†	90.339	270.000	7065.31	4416.01	-390.65	-4399.94	0.00	
12125.00†	90.339	270.000	7064.72	4515.80	-390.65	-4499.93	0.00	
12225.00†	90.339	270.000	7064.12	4615.58	-390.65	-4599.93	0.00	
12325.00†	90.339	270.000	7063.53	4715.37	-390.65	-4699.93	0.00	
12425.00†	90.339	270.000	7062.94	4815.16	-390.65	-4799.93	0.00	
12525.00†	90.339	270.000	7062.35	4914.95	-390.65	-4899.93	0.00	

Planned Wellpath Report

DONN 31N-20C-L PWP (REV-B.0)

Page 5 of 6



REFERENCE WELLPATH IDENTIFICATION

Operator	SRC ENERGY	Slot	SLOT#19 DONN 31N-20C-L (858'FNL & 251'FEL, SEC.21)
Area	COLORADO	Well	DONN 31N-20C-L
Field	WELD COUNTY (NAD83,TRUE NORTH)	Wellbore	DONN 31N-20C-L PWB
Facility	SEC.21-T06N-R66W		

WELLPATH DATA (193 stations) † = interpolated/extrapolated station

MD [ft]	Inclination [°]	Azimuth [°]	TVD [ft]	Vert Sect [ft]	North [ft]	East [ft]	DLS [°/100ft]	Comments
12625.00†	90.339	270.000	7061.76	5014.73	-390.65	-4999.93	0.00	
12725.00†	90.339	270.000	7061.17	5114.52	-390.65	-5099.92	0.00	
12825.00†	90.339	270.000	7060.57	5214.31	-390.65	-5199.92	0.00	
12925.00†	90.339	270.000	7059.98	5314.10	-390.65	-5299.92	0.00	
13025.00†	90.339	270.000	7059.39	5413.89	-390.65	-5399.92	0.00	
13125.00†	90.339	270.000	7058.80	5513.67	-390.65	-5499.92	0.00	
13225.00†	90.339	270.000	7058.21	5613.46	-390.65	-5599.91	0.00	
13325.00†	90.339	270.000	7057.62	5713.25	-390.65	-5699.91	0.00	
13425.00†	90.339	270.000	7057.02	5813.04	-390.65	-5799.91	0.00	
13525.00†	90.339	270.000	7056.43	5912.82	-390.65	-5899.91	0.00	
13625.00†	90.339	270.000	7055.84	6012.61	-390.65	-5999.91	0.00	
13725.00†	90.339	270.000	7055.25	6112.40	-390.65	-6099.91	0.00	
13825.00†	90.339	270.000	7054.66	6212.19	-390.65	-6199.90	0.00	
13925.00†	90.339	270.000	7054.07	6311.97	-390.65	-6299.90	0.00	
13960.98	90.339	270.000	7053.85	6347.88	-390.65	-6335.89	0.00	End of Tangent
14025.00†	90.339	268.079	7053.47	6411.82	-391.73	-6399.89	3.00	
14027.65	90.339	268.000	7053.46	6414.47	-391.82	-6402.54	3.00	End of 3D Arc
14125.00†	90.339	268.000	7052.88	6511.77	-395.22	-6499.83	0.00	
14225.00†	90.339	268.000	7052.29	6611.73	-398.71	-6599.76	0.00	
14325.00†	90.339	268.000	7051.70	6711.68	-402.20	-6699.70	0.00	
14425.00†	90.339	268.000	7051.11	6811.63	-405.69	-6799.64	0.00	
14525.00†	90.339	268.000	7050.52	6911.59	-409.18	-6899.58	0.00	
14625.00†	90.339	268.000	7049.92	7011.54	-412.67	-6999.51	0.00	
14725.00†	90.339	268.000	7049.33	7111.49	-416.15	-7099.45	0.00	
14825.00†	90.339	268.000	7048.74	7211.45	-419.64	-7199.39	0.00	
14925.00†	90.339	268.000	7048.15	7311.40	-423.13	-7299.32	0.00	
15025.00†	90.339	268.000	7047.56	7411.35	-426.62	-7399.26	0.00	
15125.00†	90.339	268.000	7046.97	7511.31	-430.11	-7499.20	0.00	
15225.00†	90.339	268.000	7046.37	7611.26	-433.60	-7599.14	0.00	
15325.00†	90.339	268.000	7045.78	7711.21	-437.09	-7699.07	0.00	
15425.00†	90.339	268.000	7045.19	7811.17	-440.58	-7799.01	0.00	
15525.00†	90.339	268.000	7044.60	7911.12	-444.07	-7898.95	0.00	
15625.00†	90.339	268.000	7044.01	8011.07	-447.56	-7998.89	0.00	
15725.00†	90.339	268.000	7043.42	8111.03	-451.05	-8098.82	0.00	
15825.00†	90.339	268.000	7042.82	8210.98	-454.54	-8198.76	0.00	
15925.00†	90.339	268.000	7042.23	8310.93	-458.03	-8298.70	0.00	
16025.00†	90.339	268.000	7041.64	8410.89	-461.52	-8398.64	0.00	
16027.65	90.339	268.000	7041.62	8413.53	-461.62	-8401.28	0.00	End of Tangent
16125.00†	90.337	265.079	7041.05	8510.87	-467.49	-8498.44	3.00	
16180.13	90.336	263.425	7040.73	8565.97	-473.01	-8553.30	3.00	End of 3D Arc
16225.00†	90.336	263.425	7040.46	8610.78	-478.15	-8597.87	0.00	
16325.00†	90.336	263.425	7039.88	8710.65	-489.60	-8697.21	0.00	
16425.00†	90.336	263.425	7039.29	8810.53	-501.05	-8796.55	0.00	
16525.00†	90.336	263.425	7038.71	8910.40	-512.50	-8895.89	0.00	
16625.00†	90.336	263.425	7038.12	9010.27	-523.95	-8995.23	0.00	

Planned Wellpath Report

DONN 31N-20C-L PWP (REV-B.0)

Page 6 of 6



REFERENCE WELLPATH IDENTIFICATION

Operator	SRC ENERGY	Slot	SLOT#19 DONN 31N-20C-L (858'FNL & 251'FEL, SEC.21)
Area	COLORADO	Well	DONN 31N-20C-L
Field	WELD COUNTY (NAD83,TRUE NORTH)	Wellbore	DONN 31N-20C-L PWB
Facility	SEC.21-T06N-R66W		

WELLPATH DATA (193 stations) † = interpolated/extrapolated station

MD [ft]	Inclination [°]	Azimuth [°]	TVD [ft]	Vert Sect [ft]	North [ft]	East [ft]	DLS [°/100ft]	Comments
16725.00†	90.336	263.425	7037.54	9110.15	-535.40	-9094.57	0.00	
16825.00†	90.336	263.425	7036.95	9210.02	-546.85	-9193.91	0.00	
16925.00†	90.336	263.425	7036.36	9309.90	-558.30	-9293.25	0.00	
17025.00†	90.336	263.425	7035.78	9409.77	-569.74	-9392.59	0.00	
17125.00†	90.336	263.425	7035.19	9509.64	-581.19	-9491.93	0.00	
17225.00†	90.336	263.425	7034.61	9609.52	-592.64	-9591.27	0.00	
17325.00†	90.336	263.425	7034.02	9709.39	-604.09	-9690.62	0.00	
17425.00†	90.336	263.425	7033.43	9809.27	-615.54	-9789.96	0.00	
17525.00†	90.336	263.425	7032.85	9909.14	-626.99	-9889.30	0.00	
17625.00†	90.336	263.425	7032.26	10009.01	-638.44	-9988.64	0.00	
17725.00†	90.336	263.425	7031.68	10108.89	-649.89	-10087.98	0.00	
17825.00†	90.336	263.425	7031.09	10208.76	-661.34	-10187.32	0.00	
17840.66	90.336	263.425	7031.00 ²	10224.40	-663.13	-10202.87	0.00	End of Tangent

HOLE & CASING SECTIONS

- Ref Wellbore: DONN 31N-20C-L PWB Ref Wellpath: DONN 31N-20C-L PWP (REV-B.0)

String/Diameter	Start MD [ft]	End MD [ft]	Interval [ft]	Start TVD [ft]	End TVD [ft]	Start N/S [ft]	Start E/W [ft]	End N/S [ft]	End E/W [ft]
13.5in Open Hole	25.00	1750.00	1725.00	25.00	1738.09	0.00	0.00	-80.69	165.04
9.625in Casing Surface	25.00	1750.00	1725.00	25.00	1738.09	0.00	0.00	-80.69	165.04
8.5in Open Hole	1750.00	17840.66	16090.66	1738.09	N/A	-80.69	165.04	N/A	N/A

TARGETS

Name	MD [ft]	TVD [ft]	North [ft]	East [ft]	Grid East [US ft]	Grid North [US ft]	Latitude	Longitude	Shape
SEC.20-T06N-R66W		-1.00	119.86	0.83	3201887.93	1418212.16	40°28'44.854"N	104°46'27.336"W	polygon
SEC.21-T06N-R66W		39.00	-3762.94	-6165.80	3195753.51	1414279.17	40°28'06.478"N	104°47'47.123"W	polygon
2) DONN 31N-20C-L BHL ON PLAT (1329'FNL & 150'FWL, SEC.20)	17840.66	7031.00	-663.13	-10202.87	3191691.36	1417345.72	40°28'37.096"N	104°48'39.373"W	circle
1) DONN 31N-20C-L TOP OF PROD ON PLAT (1280'FNL & 150'FEL, SEC.21)	7515.90	7092.00	-419.69	100.99	3201992.50	1417673.47	40°28'39.522"N	104°46'26.040"W	circle

SURVEY PROGRAM -

Ref Wellbore: DONN 31N-20C-L PWB Ref Wellpath: DONN 31N-20C-L PWP (REV-B.0)

Start MD [ft]	End MD [ft]	Positional Uncertainty Model	Log Name/Comment	Wellbore
25.00	1775.00	Custom BHI NaviTrak (Standard Rotating+Axial Corr) (Rockies 0.03Gt model)		DONN 31N-20C-L PWB
1775.00	17840.66	Custom BHI AutoTrak Curve (IFR1, Short) (Rockies 0.03Gt model)		DONN 31N-

SURVEY PROGRAM -				
Ref Wellbore: DONN 31N-20C-L PWB Ref Wellpath: DONN 31N-20C-L PWP (REV-B.0)				
Start MD [ft]	End MD [ft]	Positional Uncertainty Model	Log Name/Comment	Wellbore
				20C-L PWB