

SRC ENERGY

Location: COLORADO Slot: SLOT#20 DONN 31C-20-L2 (878'FNL & 251'FEL, SEC.21)
Field: WELD COUNTY (NAD83, TRUE NORTH) Well: DONN 31C-20-L2
Facility: SEC.21-T06N-R66W Wellbore: DONN 31C-20-L2 PWB

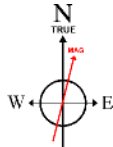
Plot reference wellpath is DONN 31C-20-L2 PWP (REV-A.0)	Grid System: NAD83 / Lambert Colorado SP, Northern Zone (501), US feet
True vertical depths are referenced to PRECISION DRILLING (25) (RKB)	North Reference: True north
Measured depths are referenced to PRECISION DRILLING (25) (RKB)	Scale: True distance
PRECISION DRILLING (25) (RKB) to Mean Sea Level: 4777 feet	Depths are in feet
Mean Sea Level to Mud line (At Slot: SLOT#20 DONN 31C-20-L2 (878'FNL & 251'FEL, SEC.21)): 0 feet	Created by: doddanna on 2017-08-22
Coordinates are in feet referenced to Slot	Database: Denver DB

Location Information

Facility Name				Grid East (US ft)	Grid North (US ft)	Latitude	Longitude
SEC.21-T06N-R66W				3201871.604	1417148.268	40°28'34.342"N	104°46'27.660"W
Slot	Local N (ft)		Local E (ft)	Grid East (US ft)	Grid North (US ft)	Latitude	Longitude
SLOT#20 DONN 31C-20-L2 (878'FNL & 251'FEL, SEC.21)	923.67		23.92	3201887.967	1418072.266	40°28'43.471"N	104°46'27.350"W
PRECISION DRILLING (25) (RKB) to Mud line (At Slot: SLOT#20 DONN 31C-20-L2 (878'FNL & 251'FEL, SEC.21))						4777ft	
Mean Sea Level to Mud line (At Slot: SLOT#20 DONN 31C-20-L2 (878'FNL & 251'FEL, SEC.21))						0ft	
PRECISION DRILLING (25) (RKB) to Mean Sea Level						4777ft	

Survey Program

Start MD (ft)	End MD (ft)	Tool	Model	Log Name/Comment	Wellbore
25.00	1750.00	BHI NavTrak	Custom BHI NavTrak (Standard Rotating-Axial Cor) (Rockies 0.03Gt model)		DONN 31C-20-L2 PWB
1750.00	17931.08	BHI AutoTrak Curve	Custom BHI AutoTrak Curve (IFR1, Short) (Rockies 0.03Gt model)		DONN 31C-20-L2 PWB

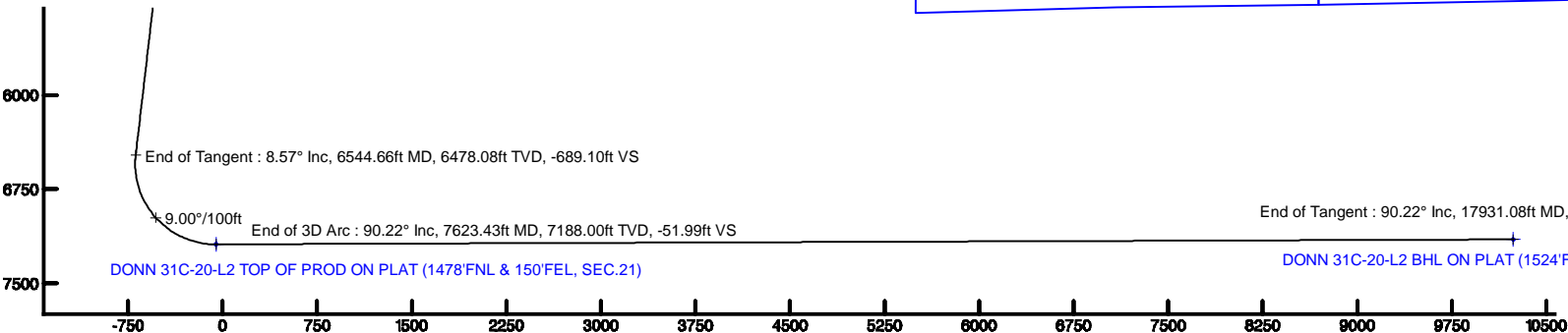


BGGM (1900.0 to 2019.0) Dip: 66.90° Field: 52436.6 nT
Magnetic North is 8.38 degrees East of True North (at 8/15/2017)

To correct azimuth from Magnetic to True add 8.38 degrees

True Vertical Depth (ft)

Scale 1 inch = 1500



Vertical Section (ft)

Scale 1 inch = 1500

Azimuth 265.30° with reference 0.00 N, 0.00 E

Targets

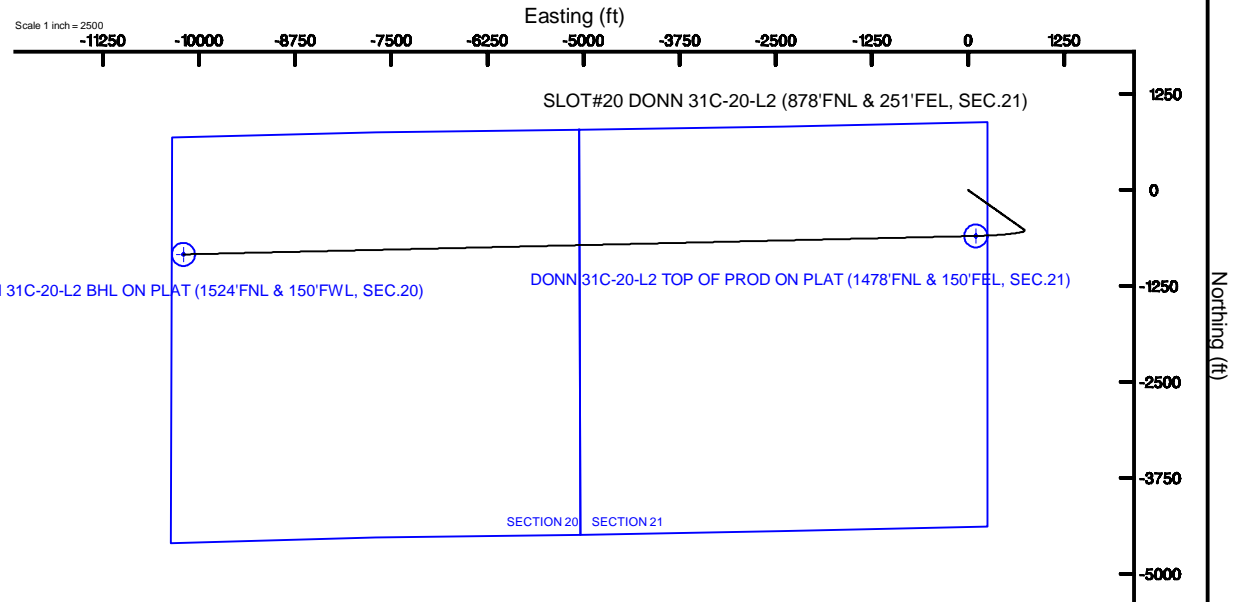
Name	MD (ft)	TVD (ft)	Local N (ft)	Local E (ft)	Grid East (US ft)	Grid North (US ft)	Latitude	Longitude
SEC.20-T06N-R66W		-1.00	139.90	1.11	3201887.93	1418212.16	40°28'44.854"N	104°46'27.336"W
SEC.21-T06N-R66W		39.00	-3742.91	-6165.52	3195753.51	1414279.17	40°28'06.478"N	104°47'47.123"W
DONN 31C-20-L2 BHL ON PLAT (1524'FNL & 150'FWL, SEC.20)	17931.08	7149.00	-838.00	-10203.51	3191692.04	1417150.82	40°28'35.170"N	104°48'39.384"W
DONN 31C-20-L2 TOP OF PROD ON PLAT (1478'FNL & 150'FEL, SEC.21)	7623.43	7188.00	-597.84	101.27	3201994.12	1417475.29	40°28'37.564"N	104°46'26.040"W

Hole and Casing Sections

Name	Start MD (ft)	End MD (ft)	Interval (ft)	Start TVD (ft)	End TVD (ft)	Start Local N (ft)	Start Local E (ft)	End Local N (ft)	End Local E (ft)	Wellbore
13.5in Open Hole	25.00	1750.00	1725.00	25.00	1736.99	0.00	0.00	-106.38	150.45	DONN 31C-20-L2 PWB
9.625in Casing Surface	25.00	1750.00	1725.00	25.00	1736.99	0.00	0.00	-106.38	150.45	DONN 31C-20-L2 PWB
8.5in Open Hole	1750.00	17931.08	16181.08	1736.99	7149.00	-106.38	150.45	-10203.51	-10203.51	DONN 31C-20-L2 PWB

Well Profile Data

Design Comment	MD (ft)	Inc (°)	Az (°)	TVD (ft)	Local N (ft)	Local E (ft)	DLS (°/100ft)	VS (ft)
Tie On	25.00	0.000	125.263	25.00	0.00	0.00	0.00	0.00
End of Tangent	300.00	0.000	125.263	300.00	0.00	0.00	0.00	0.00
End of Build	728.65	8.573	125.263	727.06	-18.48	26.14	2.00	-24.54
End of Tangent	6544.66	8.573	125.263	6478.08	-519.03	734.04	0.00	-689.10
End of 3D Arc	7623.43	90.217	268.665	7188.00	-597.84	101.27	9.00	-51.99
End of Tangent	17931.08	90.217	268.665	7149.00	-838.00	-10203.51	0.00	10237.86



North (ft)

Planned Wellpath Report

DONN 31C-20-L2 PWP (REV-A.0)

Page 1 of 6



REFERENCE WELLPATH IDENTIFICATION

Operator	SRC ENERGY	Slot	SLOT#20 DONN 31C-20-L2 (878'FNL & 251'FEL, SEC.21)
Area	COLORADO	Well	DONN 31C-20-L2
Field	WELD COUNTY (NAD83,TRUE NORTH)	Wellbore	DONN 31C-20-L2 PWB
Facility	SEC.21-T06N-R66W		

REPORT SETUP INFORMATION

Projection System	NAD83 / Lambert Colorado SP, Northern Zone (501), US feet	Software System	WellArchitect® 5.1
North Reference	True	User	Doddanna
Scale	0.999965	Report Generated	8/22/2017 at 5:06:45 PM
Convergence at slot	0.47° East	Database/Source file	Denver DB/DONN_31C-20-L2_PWP__REV-A.0_.xml

WELLPATH LOCATION

	Local coordinates		Grid coordinates		Geographic coordinates	
	North[ft]	East[ft]	Easting[US ft]	Northing[US ft]	Latitude	Longitude
Slot Location	923.87	23.92	3201887.97	1418072.27	40°28'43.471"N	104°46'27.350"W
Facility Reference Pt			3201871.60	1417148.27	40°28'34.342"N	104°46'27.660"W
Field Reference Pt			3171284.48	1426358.81	40°30'07.643"N	104°53'02.634"W

WELLPATH DATUM

Calculation method	Minimum curvature	PRECISION DRILLING (25') (RKB) to Facility Vertical Datum	4777.00ft
Horizontal Reference Pt	Slot	PRECISION DRILLING (25') (RKB) to Mean Sea Level	4777.00ft
Vertical Reference Pt	PRECISION DRILLING (25') (RKB)	PRECISION DRILLING (25') (RKB) to Mud Line at Slot (SLOT#20 DONN 31C-20-L2 (878'FNL & 251'FEL, SEC.21))	4777.00ft
MD Reference Pt	PRECISION DRILLING (25') (RKB)	Section Origin	N 0.00, E 0.00 ft
Field Vertical Reference	Mean Sea Level	Section Azimuth	265.30°

Planned Wellpath Report

DONN 31C-20-L2 PWP (REV-A.0)

Page 2 of 6



REFERENCE WELLPATH IDENTIFICATION

Operator	SRC ENERGY	Slot	SLOT#20 DONN 31C-20-L2 (878'FNL & 251'FEL, SEC.21)
Area	COLORADO	Well	DONN 31C-20-L2
Field	WELD COUNTY (NAD83,TRUE NORTH)	Wellbore	DONN 31C-20-L2 PWB
Facility	SEC.21-T06N-R66W		

WELLPATH DATA (186 stations) † = interpolated/extrapolated station

MD [ft]	Inclination [°]	Azimuth [°]	TVD [ft]	Vert Sect [ft]	North [ft]	East [ft]	DLS [°/100ft]	Comments
0.00†	0.000	125.263	0.00	0.00	0.00	0.00	0.00	
25.00	0.000	125.263	25.00	0.00	0.00	0.00	0.00	Tie On
125.00†	0.000	125.263	125.00	0.00	0.00	0.00	0.00	
225.00†	0.000	125.263	225.00	0.00	0.00	0.00	0.00	
300.00	0.000	125.263	300.00	0.00	0.00	0.00	0.00	End of Tangent
325.00†	0.500	125.263	325.00	-0.08	-0.06	0.09	2.00	
425.00†	2.500	125.263	424.96	-2.09	-1.57	2.23	2.00	
525.00†	4.500	125.263	524.77	-6.77	-5.10	7.21	2.00	
625.00†	6.500	125.263	624.30	-14.12	-10.63	15.04	2.00	
725.00†	8.500	125.263	723.44	-24.12	-18.17	25.69	2.00	
728.65	8.573	125.263	727.06	-24.54	-18.48	26.14	2.00	End of Build
825.00†	8.573	125.263	822.33	-35.54	-26.77	37.86	0.00	
925.00†	8.573	125.263	921.21	-46.97	-35.38	50.03	0.00	
1025.00†	8.573	125.263	1020.09	-58.40	-43.98	62.21	0.00	
1125.00†	8.573	125.263	1118.97	-69.82	-52.59	74.38	0.00	
1225.00†	8.573	125.263	1217.86	-81.25	-61.20	86.55	0.00	
1325.00†	8.573	125.263	1316.74	-92.68	-69.80	98.72	0.00	
1425.00†	8.573	125.263	1415.62	-104.10	-78.41	110.89	0.00	
1525.00†	8.573	125.263	1514.50	-115.53	-87.02	123.07	0.00	
1625.00†	8.573	125.263	1613.39	-126.96	-95.62	135.24	0.00	
1725.00†	8.573	125.263	1712.27	-138.38	-104.23	147.41	0.00	
1825.00†	8.573	125.263	1811.15	-149.81	-112.84	159.58	0.00	
1925.00†	8.573	125.263	1910.03	-161.24	-121.44	171.75	0.00	
2025.00†	8.573	125.263	2008.92	-172.66	-130.05	183.92	0.00	
2125.00†	8.573	125.263	2107.80	-184.09	-138.65	196.10	0.00	
2225.00†	8.573	125.263	2206.68	-195.51	-147.26	208.27	0.00	
2325.00†	8.573	125.263	2305.57	-206.94	-155.87	220.44	0.00	
2425.00†	8.573	125.263	2404.45	-218.37	-164.47	232.61	0.00	
2525.00†	8.573	125.263	2503.33	-229.79	-173.08	244.78	0.00	
2625.00†	8.573	125.263	2602.21	-241.22	-181.69	256.95	0.00	
2725.00†	8.573	125.263	2701.10	-252.65	-190.29	269.13	0.00	
2825.00†	8.573	125.263	2799.98	-264.07	-198.90	281.30	0.00	
2925.00†	8.573	125.263	2898.86	-275.50	-207.51	293.47	0.00	
3025.00†	8.573	125.263	2997.74	-286.93	-216.11	305.64	0.00	
3125.00†	8.573	125.263	3096.63	-298.35	-224.72	317.81	0.00	
3225.00†	8.573	125.263	3195.51	-309.78	-233.32	329.98	0.00	
3325.00†	8.573	125.263	3294.39	-321.21	-241.93	342.16	0.00	
3425.00†	8.573	125.263	3393.27	-332.63	-250.54	354.33	0.00	
3525.00†	8.573	125.263	3492.16	-344.06	-259.14	366.50	0.00	
3625.00†	8.573	125.263	3591.04	-355.48	-267.75	378.67	0.00	
3725.00†	8.573	125.263	3689.92	-366.91	-276.36	390.84	0.00	
3825.00†	8.573	125.263	3788.81	-378.34	-284.96	403.01	0.00	
3925.00†	8.573	125.263	3887.69	-389.76	-293.57	415.19	0.00	
4025.00†	8.573	125.263	3986.57	-401.19	-302.18	427.36	0.00	
4125.00†	8.573	125.263	4085.45	-412.62	-310.78	439.53	0.00	

Planned Wellpath Report

DONN 31C-20-L2 PWP (REV-A.0)

Page 3 of 6



REFERENCE WELLPATH IDENTIFICATION

Operator	SRC ENERGY	Slot	SLOT#20 DONN 31C-20-L2 (878'FNL & 251'FEL, SEC.21)
Area	COLORADO	Well	DONN 31C-20-L2
Field	WELD COUNTY (NAD83,TRUE NORTH)	Wellbore	DONN 31C-20-L2 PWB
Facility	SEC.21-T06N-R66W		

WELLPATH DATA (186 stations) † = interpolated/extrapolated station

MD [ft]	Inclination [°]	Azimuth [°]	TVD [ft]	Vert Sect [ft]	North [ft]	East [ft]	DLS [°/100ft]	Comments
4225.00†	8.573	125.263	4184.34	-424.04	-319.39	451.70	0.00	
4325.00†	8.573	125.263	4283.22	-435.47	-327.99	463.87	0.00	
4425.00†	8.573	125.263	4382.10	-446.90	-336.60	476.05	0.00	
4525.00†	8.573	125.263	4480.98	-458.32	-345.21	488.22	0.00	
4625.00†	8.573	125.263	4579.87	-469.75	-353.81	500.39	0.00	
4725.00†	8.573	125.263	4678.75	-481.18	-362.42	512.56	0.00	
4825.00†	8.573	125.263	4777.63	-492.60	-371.03	524.73	0.00	
4925.00†	8.573	125.263	4876.51	-504.03	-379.63	536.90	0.00	
5025.00†	8.573	125.263	4975.40	-515.45	-388.24	549.08	0.00	
5125.00†	8.573	125.263	5074.28	-526.88	-396.85	561.25	0.00	
5225.00†	8.573	125.263	5173.16	-538.31	-405.45	573.42	0.00	
5325.00†	8.573	125.263	5272.05	-549.73	-414.06	585.59	0.00	
5425.00†	8.573	125.263	5370.93	-561.16	-422.66	597.76	0.00	
5525.00†	8.573	125.263	5469.81	-572.59	-431.27	609.93	0.00	
5625.00†	8.573	125.263	5568.69	-584.01	-439.88	622.11	0.00	
5725.00†	8.573	125.263	5667.58	-595.44	-448.48	634.28	0.00	
5825.00†	8.573	125.263	5766.46	-606.87	-457.09	646.45	0.00	
5925.00†	8.573	125.263	5865.34	-618.29	-465.70	658.62	0.00	
6025.00†	8.573	125.263	5964.22	-629.72	-474.30	670.79	0.00	
6125.00†	8.573	125.263	6063.11	-641.15	-482.91	682.96	0.00	
6225.00†	8.573	125.263	6161.99	-652.57	-491.51	695.14	0.00	
6325.00†	8.573	125.263	6260.87	-664.00	-500.12	707.31	0.00	
6425.00†	8.573	125.263	6359.75	-675.42	-508.73	719.48	0.00	
6525.00†	8.573	125.263	6458.64	-686.85	-517.33	731.65	0.00	
6544.66	8.573	125.263	6478.08	-689.10	-519.03	734.04	0.00	End of Tangent
6625.00†	5.151	182.644	6557.91	-693.23	-526.10	738.77	9.00	
6725.00†	10.665	240.125	6657.05	-684.27	-535.21	730.53	9.00	
6825.00†	19.040	253.542	6753.65	-659.87	-544.46	706.81	9.00	
6925.00†	27.800	258.826	6845.33	-620.65	-553.62	668.21	9.00	
7025.00†	36.670	261.709	6929.84	-567.57	-562.46	615.68	9.00	
7125.00†	45.586	263.591	7005.09	-501.93	-570.77	550.50	9.00	
7225.00†	54.524	264.971	7069.23	-425.36	-578.34	474.29	9.00	
7325.00†	63.474	266.073	7120.69	-339.74	-584.99	388.92	9.00	
7425.00†	72.432	267.014	7158.19	-247.17	-590.55	296.50	9.00	
7525.00†	81.394	267.866	7180.81	-149.93	-594.88	199.29	9.00	
7623.43	90.217	268.665	7188.00 ¹	-51.99	-597.84	101.27	9.00	End of 3D Arc
7625.00†	90.217	268.665	7187.99	-50.43	-597.88	99.70	0.00	
7725.00†	90.217	268.665	7187.62	49.40	-600.21	-0.27	0.00	
7825.00†	90.217	268.665	7187.24	149.23	-602.54	-100.24	0.00	
7925.00†	90.217	268.665	7186.86	249.06	-604.87	-200.22	0.00	
8025.00†	90.217	268.665	7186.48	348.88	-607.20	-300.19	0.00	
8125.00†	90.217	268.665	7186.10	448.71	-609.53	-400.16	0.00	
8225.00†	90.217	268.665	7185.72	548.54	-611.86	-500.13	0.00	
8325.00†	90.217	268.665	7185.35	648.37	-614.19	-600.11	0.00	
8425.00†	90.217	268.665	7184.97	748.19	-616.52	-700.08	0.00	

Planned Wellpath Report

DONN 31C-20-L2 PWP (REV-A.0)

Page 4 of 6



REFERENCE WELLPATH IDENTIFICATION

Operator	SRC ENERGY	Slot	SLOT#20 DONN 31C-20-L2 (878'FNL & 251'FEL, SEC.21)
Area	COLORADO	Well	DONN 31C-20-L2
Field	WELD COUNTY (NAD83,TRUE NORTH)	Wellbore	DONN 31C-20-L2 PWB
Facility	SEC.21-T06N-R66W		

WELLPATH DATA (186 stations) † = interpolated/extrapolated station

MD [ft]	Inclination [°]	Azimuth [°]	TVD [ft]	Vert Sect [ft]	North [ft]	East [ft]	DLS [°/100ft]	Comments
8525.00†	90.217	268.665	7184.59	848.02	-618.85	-800.05	0.00	
8625.00†	90.217	268.665	7184.21	947.85	-621.18	-900.02	0.00	
8725.00†	90.217	268.665	7183.83	1047.67	-623.51	-999.99	0.00	
8825.00†	90.217	268.665	7183.45	1147.50	-625.84	-1099.97	0.00	
8925.00†	90.217	268.665	7183.08	1247.33	-628.17	-1199.94	0.00	
9025.00†	90.217	268.665	7182.70	1347.16	-630.50	-1299.91	0.00	
9125.00†	90.217	268.665	7182.32	1446.98	-632.83	-1399.88	0.00	
9225.00†	90.217	268.665	7181.94	1546.81	-635.16	-1499.85	0.00	
9325.00†	90.217	268.665	7181.56	1646.64	-637.49	-1599.83	0.00	
9425.00†	90.217	268.665	7181.18	1746.47	-639.82	-1699.80	0.00	
9525.00†	90.217	268.665	7180.81	1846.29	-642.15	-1799.77	0.00	
9625.00†	90.217	268.665	7180.43	1946.12	-644.48	-1899.74	0.00	
9725.00†	90.217	268.665	7180.05	2045.95	-646.81	-1999.72	0.00	
9825.00†	90.217	268.665	7179.67	2145.78	-649.14	-2099.69	0.00	
9925.00†	90.217	268.665	7179.29	2245.60	-651.47	-2199.66	0.00	
10025.00†	90.217	268.665	7178.91	2345.43	-653.80	-2299.63	0.00	
10125.00†	90.217	268.665	7178.54	2445.26	-656.13	-2399.60	0.00	
10225.00†	90.217	268.665	7178.16	2545.09	-658.46	-2499.58	0.00	
10325.00†	90.217	268.665	7177.78	2644.91	-660.79	-2599.55	0.00	
10425.00†	90.217	268.665	7177.40	2744.74	-663.12	-2699.52	0.00	
10525.00†	90.217	268.665	7177.02	2844.57	-665.45	-2799.49	0.00	
10625.00†	90.217	268.665	7176.64	2944.39	-667.78	-2899.46	0.00	
10725.00†	90.217	268.665	7176.26	3044.22	-670.11	-2999.44	0.00	
10825.00†	90.217	268.665	7175.89	3144.05	-672.44	-3099.41	0.00	
10925.00†	90.217	268.665	7175.51	3243.88	-674.77	-3199.38	0.00	
11025.00†	90.217	268.665	7175.13	3343.70	-677.10	-3299.35	0.00	
11125.00†	90.217	268.665	7174.75	3443.53	-679.43	-3399.33	0.00	
11225.00†	90.217	268.665	7174.37	3543.36	-681.76	-3499.30	0.00	
11325.00†	90.217	268.665	7173.99	3643.19	-684.09	-3599.27	0.00	
11425.00†	90.217	268.665	7173.62	3743.01	-686.42	-3699.24	0.00	
11525.00†	90.217	268.665	7173.24	3842.84	-688.75	-3799.21	0.00	
11625.00†	90.217	268.665	7172.86	3942.67	-691.08	-3899.19	0.00	
11725.00†	90.217	268.665	7172.48	4042.50	-693.41	-3999.16	0.00	
11825.00†	90.217	268.665	7172.10	4142.32	-695.74	-4099.13	0.00	
11925.00†	90.217	268.665	7171.72	4242.15	-698.07	-4199.10	0.00	
12025.00†	90.217	268.665	7171.35	4341.98	-700.40	-4299.07	0.00	
12125.00†	90.217	268.665	7170.97	4441.81	-702.73	-4399.05	0.00	
12225.00†	90.217	268.665	7170.59	4541.63	-705.06	-4499.02	0.00	
12325.00†	90.217	268.665	7170.21	4641.46	-707.39	-4598.99	0.00	
12425.00†	90.217	268.665	7169.83	4741.29	-709.72	-4698.96	0.00	
12525.00†	90.217	268.665	7169.45	4841.12	-712.05	-4798.93	0.00	
12625.00†	90.217	268.665	7169.08	4940.94	-714.38	-4898.91	0.00	
12725.00†	90.217	268.665	7168.70	5040.77	-716.71	-4998.88	0.00	
12825.00†	90.217	268.665	7168.32	5140.60	-719.04	-5098.85	0.00	
12925.00†	90.217	268.665	7167.94	5240.42	-721.37	-5198.82	0.00	

Planned Wellpath Report

DONN 31C-20-L2 PWP (REV-A.0)

Page 5 of 6



REFERENCE WELLPATH IDENTIFICATION

Operator	SRC ENERGY	Slot	SLOT#20 DONN 31C-20-L2 (878'FNL & 251'FEL, SEC.21)
Area	COLORADO	Well	DONN 31C-20-L2
Field	WELD COUNTY (NAD83,TRUE NORTH)	Wellbore	DONN 31C-20-L2 PWB
Facility	SEC.21-T06N-R66W		

WELLPATH DATA (186 stations) † = interpolated/extrapolated station

MD [ft]	Inclination [°]	Azimuth [°]	TVD [ft]	Vert Sect [ft]	North [ft]	East [ft]	DLS [°/100ft]	Comments
13025.00†	90.217	268.665	7167.56	5340.25	-723.70	-5298.80	0.00	
13125.00†	90.217	268.665	7167.18	5440.08	-726.03	-5398.77	0.00	
13225.00†	90.217	268.665	7166.81	5539.91	-728.36	-5498.74	0.00	
13325.00†	90.217	268.665	7166.43	5639.73	-730.69	-5598.71	0.00	
13425.00†	90.217	268.665	7166.05	5739.56	-733.02	-5698.68	0.00	
13525.00†	90.217	268.665	7165.67	5839.39	-735.35	-5798.66	0.00	
13625.00†	90.217	268.665	7165.29	5939.22	-737.68	-5898.63	0.00	
13725.00†	90.217	268.665	7164.91	6039.04	-740.01	-5998.60	0.00	
13825.00†	90.217	268.665	7164.54	6138.87	-742.34	-6098.57	0.00	
13925.00†	90.217	268.665	7164.16	6238.70	-744.67	-6198.54	0.00	
14025.00†	90.217	268.665	7163.78	6338.53	-747.00	-6298.52	0.00	
14125.00†	90.217	268.665	7163.40	6438.35	-749.33	-6398.49	0.00	
14225.00†	90.217	268.665	7163.02	6538.18	-751.66	-6498.46	0.00	
14325.00†	90.217	268.665	7162.64	6638.01	-753.99	-6598.43	0.00	
14425.00†	90.217	268.665	7162.27	6737.84	-756.32	-6698.41	0.00	
14525.00†	90.217	268.665	7161.89	6837.66	-758.65	-6798.38	0.00	
14625.00†	90.217	268.665	7161.51	6937.49	-760.98	-6898.35	0.00	
14725.00†	90.217	268.665	7161.13	7037.32	-763.31	-6998.32	0.00	
14825.00†	90.217	268.665	7160.75	7137.14	-765.64	-7098.29	0.00	
14925.00†	90.217	268.665	7160.37	7236.97	-767.97	-7198.27	0.00	
15025.00†	90.217	268.665	7160.00	7336.80	-770.30	-7298.24	0.00	
15125.00†	90.217	268.665	7159.62	7436.63	-772.63	-7398.21	0.00	
15225.00†	90.217	268.665	7159.24	7536.45	-774.96	-7498.18	0.00	
15325.00†	90.217	268.665	7158.86	7636.28	-777.29	-7598.15	0.00	
15425.00†	90.217	268.665	7158.48	7736.11	-779.61	-7698.13	0.00	
15525.00†	90.217	268.665	7158.10	7835.94	-781.94	-7798.10	0.00	
15625.00†	90.217	268.665	7157.73	7935.76	-784.27	-7898.07	0.00	
15725.00†	90.217	268.665	7157.35	8035.59	-786.60	-7998.04	0.00	
15825.00†	90.217	268.665	7156.97	8135.42	-788.93	-8098.02	0.00	
15925.00†	90.217	268.665	7156.59	8235.25	-791.26	-8197.99	0.00	
16025.00†	90.217	268.665	7156.21	8335.07	-793.59	-8297.96	0.00	
16125.00†	90.217	268.665	7155.83	8434.90	-795.92	-8397.93	0.00	
16225.00†	90.217	268.665	7155.46	8534.73	-798.25	-8497.90	0.00	
16325.00†	90.217	268.665	7155.08	8634.56	-800.58	-8597.88	0.00	
16425.00†	90.217	268.665	7154.70	8734.38	-802.91	-8697.85	0.00	
16525.00†	90.217	268.665	7154.32	8834.21	-805.24	-8797.82	0.00	
16625.00†	90.217	268.665	7153.94	8934.04	-807.57	-8897.79	0.00	
16725.00†	90.217	268.665	7153.56	9033.87	-809.90	-8997.76	0.00	
16825.00†	90.217	268.665	7153.18	9133.69	-812.23	-9097.74	0.00	
16925.00†	90.217	268.665	7152.81	9233.52	-814.56	-9197.71	0.00	
17025.00†	90.217	268.665	7152.43	9333.35	-816.89	-9297.68	0.00	
17125.00†	90.217	268.665	7152.05	9433.17	-819.22	-9397.65	0.00	
17225.00†	90.217	268.665	7151.67	9533.00	-821.55	-9497.63	0.00	
17325.00†	90.217	268.665	7151.29	9632.83	-823.88	-9597.60	0.00	
17425.00†	90.217	268.665	7150.91	9732.66	-826.21	-9697.57	0.00	

Planned Wellpath Report

DONN 31C-20-L2 PWP (REV-A.0)

Page 6 of 6



REFERENCE WELLPATH IDENTIFICATION

Operator	SRC ENERGY	Slot	SLOT#20 DONN 31C-20-L2 (878'FNL & 251'FEL, SEC.21)
Area	COLORADO	Well	DONN 31C-20-L2
Field	WELD COUNTY (NAD83,TRUE NORTH)	Wellbore	DONN 31C-20-L2 PWB
Facility	SEC.21-T06N-R66W		

WELLPATH DATA (186 stations) † = interpolated/extrapolated station

MD [ft]	Inclination [°]	Azimuth [°]	TVD [ft]	Vert Sect [ft]	North [ft]	East [ft]	DLS [°/100ft]	Comments
17525.00†	90.217	268.665	7150.54	9832.48	-828.54	-9797.54	0.00	
17625.00†	90.217	268.665	7150.16	9932.31	-830.87	-9897.51	0.00	
17725.00†	90.217	268.665	7149.78	10032.14	-833.20	-9997.49	0.00	
17825.00†	90.217	268.665	7149.40	10131.97	-835.53	-10097.46	0.00	
17925.00†	90.217	268.665	7149.02	10231.79	-837.86	-10197.43	0.00	
17931.08	90.217	268.665	7149.00 ²	10237.86	-838.00	-10203.51	0.00	End of Tangent

HOLE & CASING SECTIONS

- Ref Wellbore: DONN 31C-20-L2 PWB Ref Wellpath: DONN 31C-20-L2 PWP (REV-A.0)

String/Diameter	Start MD [ft]	End MD [ft]	Interval [ft]	Start TVD [ft]	End TVD [ft]	Start N/S [ft]	Start E/W [ft]	End N/S [ft]	End E/W [ft]
13.5in Open Hole	25.00	1750.00	1725.00	25.00	1736.99	0.00	0.00	-106.38	150.45
9.625in Casing Surface	25.00	1750.00	1725.00	25.00	1736.99	0.00	0.00	-106.38	150.45
8.5in Open Hole	1750.00	17931.08	16181.08	1736.99	7149.00	-106.38	150.45	-838.00	-10203.51

TARGETS

Name	MD [ft]	TVD [ft]	North [ft]	East [ft]	Grid East [US ft]	Grid North [US ft]	Latitude	Longitude	Shape
SEC.20-T06N-R66W		-1.00	139.90	1.11	3201887.93	1418212.16	40°28'44.854"N	104°46'27.336"W	polygon
SEC.21-T06N-R66W		39.00	-3742.91	-6165.52	3195753.51	1414279.17	40°28'06.478"N	104°47'47.123"W	polygon
2) DONN 31C-20-L2 BHL ON PLAT (1524'FNL & 150'FWL, SEC.20)	17931.08	7149.00	-838.00	-10203.51	3191692.04	1417150.82	40°28'35.170"N	104°48'39.384"W	circle
1) DONN 31C-20-L2 TOP OF PROD ON PLAT (1478'FNL & 150'FEL, SEC.21)	7623.43	7188.00	-597.84	101.27	3201994.12	1417475.29	40°28'37.564"N	104°46'26.040"W	circle

SURVEY PROGRAM -

Ref Wellbore: DONN 31C-20-L2 PWB Ref Wellpath: DONN 31C-20-L2 PWP (REV-A.0)

Start MD [ft]	End MD [ft]	Positional Uncertainty Model	Log Name/Comment	Wellbore
25.00	1750.00	Custom BHI NaviTrak (Standard Rotating+Axial Corr) (Rockies 0.03Gt model)		DONN 31C-20-L2 PWB
1750.00	17931.08	Custom BHI AutoTrak Curve (IFR1, Short) (Rockies 0.03Gt model)		DONN 31C-20-L2 PWB