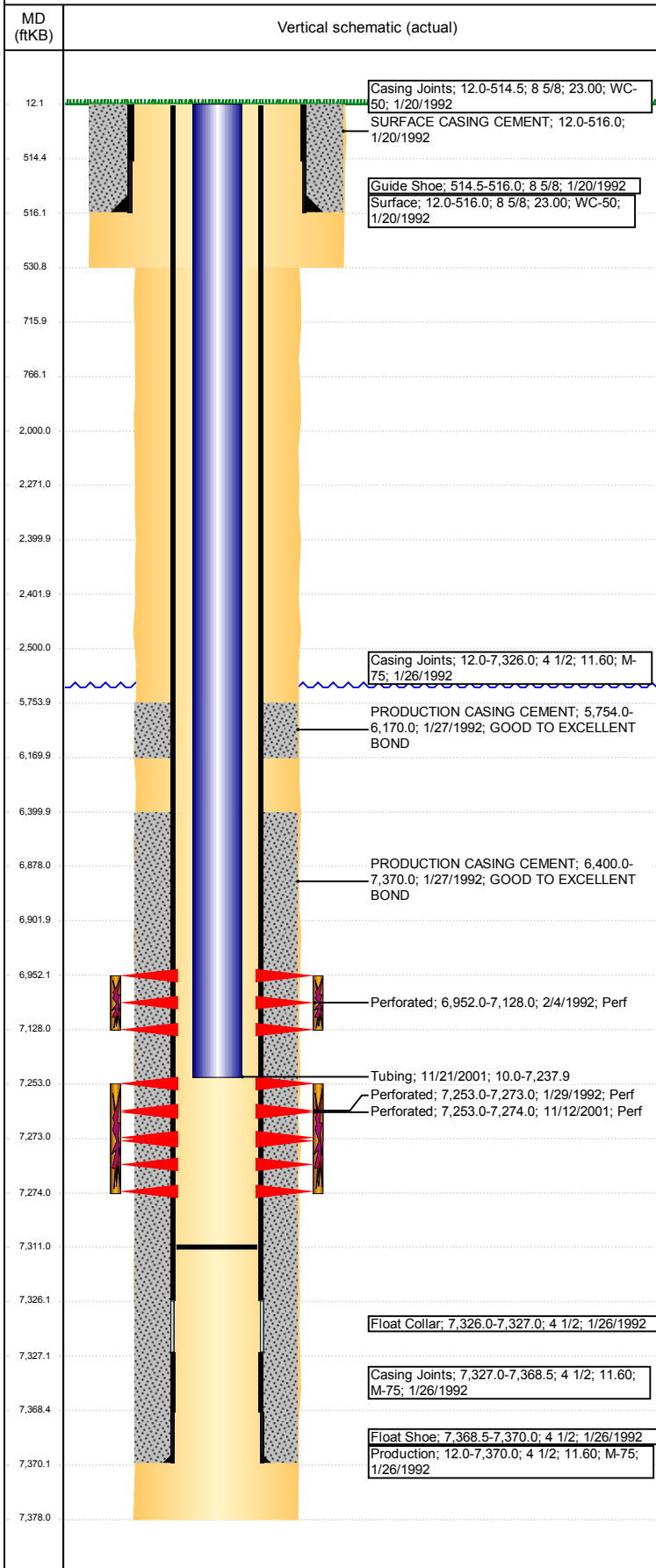


Well Name: STATE 36-12E

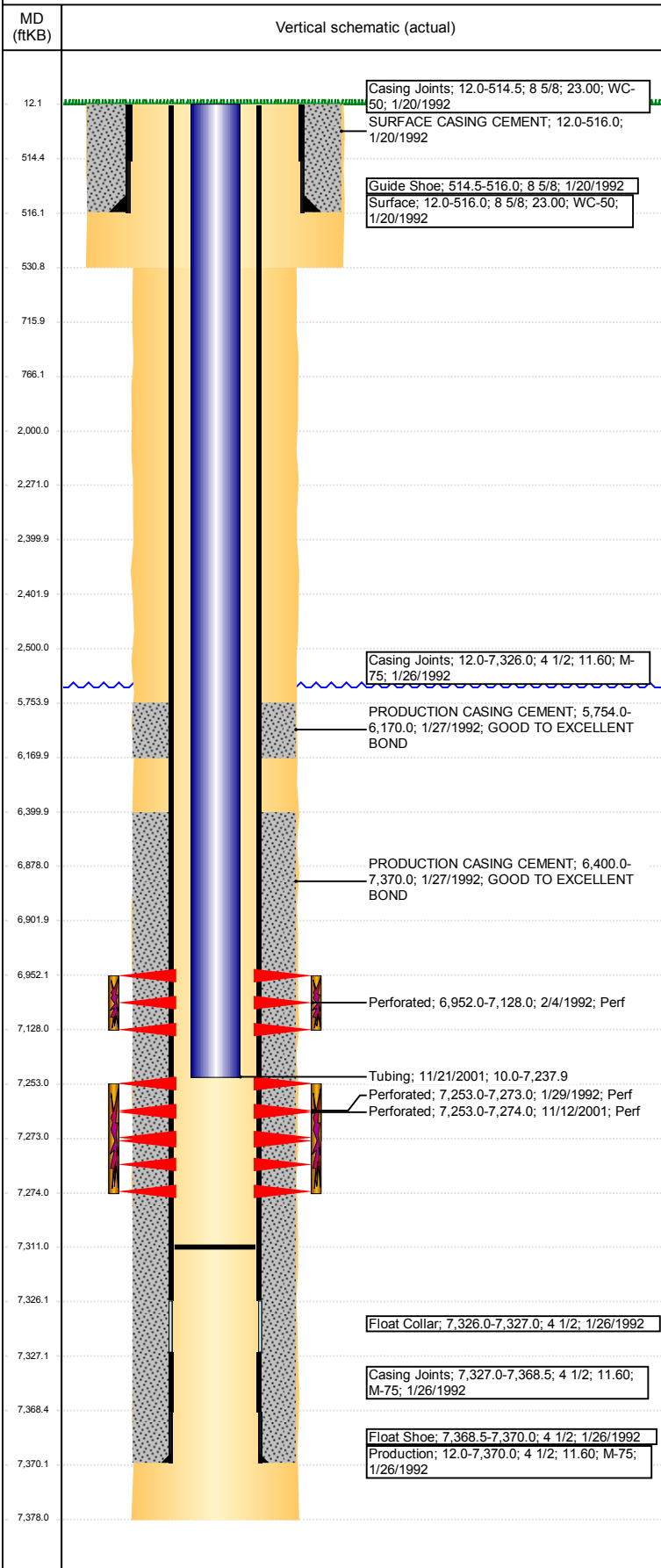
VERTICAL - ORIGINAL HOLE, 10/12/2017 11:52:09 AM



Well Header								
API 05-123-15446		Business Unit DJ BASIN		District 15		Well Config VERTICAL		
Original KB Elevation (ft) 4,786		KB - GL / MSL (ftKB) 12.00		Spud Date 1/19/1992		P & A Date		
Comment								
Directions To Well								
Congressional Location								
Quarter 3 NW	Quarter 4 SW	Section 36	Township 4	Twnshp N/S Dir N	Range 67	Range E/W Dir W		
Bottom Hole Location								
North-South Distance (ft)		From N or S Line		East-West Distance (ft)		From E or W Line		
Plug Back Total Depths								
Date	Depth (ftKB)	Method			Com			
1/27/1992	7,325.0	CASING TALLY			TOP OF LATCH DOWN BAFFLE			
1/29/1992	7,298.0	CASED HOLE LOG			CBL DEPTH LOGGER			
11/21/2001	7,311.0	TAG			MOST RECENT TAG FILL			
Wellbore Sections								
Section Des		Size (in)		Act Top, MD (ftKB)		Act Btm, MD (ftKB)		
SURFACE		12 1/4		12		531		
PRODUCTION		7 7/8		531		7,378		
Zone Statuses								
Zone Name	Status Date	Status	Fluid Type	Job	Prod Method			
CODELL	2/21/1992	PR		DRILLING/CO...				
CODELL	11/26/2001	PR		RE-FRAC, 11/7 ...				
NIOBRARA	2/21/1992	PR		DRILLING/CO...				
Casing Strings								
Surface, 516.0ftKB								
Casing Description Surface		Run Date 1/20/1992	OD (in) 8 5/8	Wt/Len (l... 23.00	Grade WC-50	Top, MD (ft... 12.0	MD (ftKB) 516.0	
Production, 7,370.0ftKB								
Casing Description Production		Run Date 1/26/1992	OD (in) 4 1/2	Wt/Len (l... 11.60	Grade M-75	Top, MD (ft... 12.0	MD (ftKB) 7,370.0	
Cement								
Description SURFACE CASING CEMENT				Top Depth (ftKB) 12.0		Bottom Depth (ftKB) 516.0		
Description PRODUCTION CASING CEMENT				Top Depth (ftKB) 5,754.0		Bottom Depth (ftKB) 6,170.0		
Description PRODUCTION CASING CEMENT				Top Depth (ftKB) 6,400.0		Bottom Depth (ftKB) 7,370.0		
Description PA Plug - Top of CICR				Top Depth (ftKB) 2,271.0		Bottom Depth (ftKB) 2,400.0		
Description PA Plug - Below CICR				Top Depth (ftKB) 2,402.0		Bottom Depth (ftKB) 2,500.0		
Description Shoe Plug				Top Depth (ftKB) 12.0		Bottom Depth (ftKB) 716.0		
Description Stub Plug - Attempt				Top Depth (ftKB) 716.0		Bottom Depth (ftKB) 766.0		
Description PA Plug - Annulus				Top Depth (ftKB) 2,000.0		Bottom Depth (ftKB) 2,500.0		
Tubing Strings								
Tubing Description Tubing		Run Date 11/21/2001	String... 2 3/8	ID (in) 2.00	Wt (lb/ft) 4.70	Grade J-55	Len (ft) 7,227.90	Set De...
Tubing Components								
Item Des	OD (in)	Wt (lb/ft)	Grade	Jts	Len (ft)	Btm (ftKB)	Btm (TVD) (ftKB)	
EUE 8rd Tubing	2 3/8	4.70	J-55	233	7,226.30	7,236.3		
Seal Nipple	2 3/8			1	1.10	7,237.4		
Notched collar	2 3/8			1	0.50	7,237.9		
Other In Hole								
Run Date	Des				OD (in)	Top (ftKB)	Btm (ftKB)	
10/10/2017	Cast Iron Bridge Plug w/ 2 SX Cement				3.99	6,878.0	6,902.0	
10/10/2017	Cement Retainer				3.99	2,400.0	2,402.0	
Logs								
Date	Type				Top, MD (ftKB)		Btm, MD (ftKB)	
1/26/1992	COMPENSATED DENSITY				3,600.0		7,341.0	
1/26/1992	INDUCTION				518.0		7,376.0	

Well Name: STATE 36-12E

VERTICAL - ORIGINAL HOLE, 10/12/2017 11:52:09 AM



Logs					
Date	Type	Top, MD (ftKB)	Btm, MD (ftKB)		
1/29/1992	CBL/CCL/GR	5,500.0	7,298.0		
Perforation Data					
Linked Zone	Bnch/St g	Sum of Entered Shot Total	Top (ftKB)	Btm (ftKB)	Date
NIORARA, ORIGINAL HOLE		28	6,952.00	7,128.00	2/4/1992
CODELL, ORIGINAL HOLE		88	7,253.00	7,274.00	11/12/2001
CODELL, ORIGINAL HOLE		80	7,253.00	7,273.00	1/29/1992
Total (Sum)		196			
Stimulation Intervals					
Start Date 1/30/1992		Primary Job Type DRILLING/COMPLETION - ORIGINAL			
Technical Result		Tech Result Details		Tech Result Note	
Comment					
Start Date 2/7/1992		Primary Job Type DRILLING/COMPLETION - ORIGINAL			
Technical Result		Tech Result Details		Tech Result Note	
Comment					
Start Date 11/19/2001		Primary Job Type RE-FRAC			
Technical Result		Tech Result Details		Tech Result Note	
Comment					