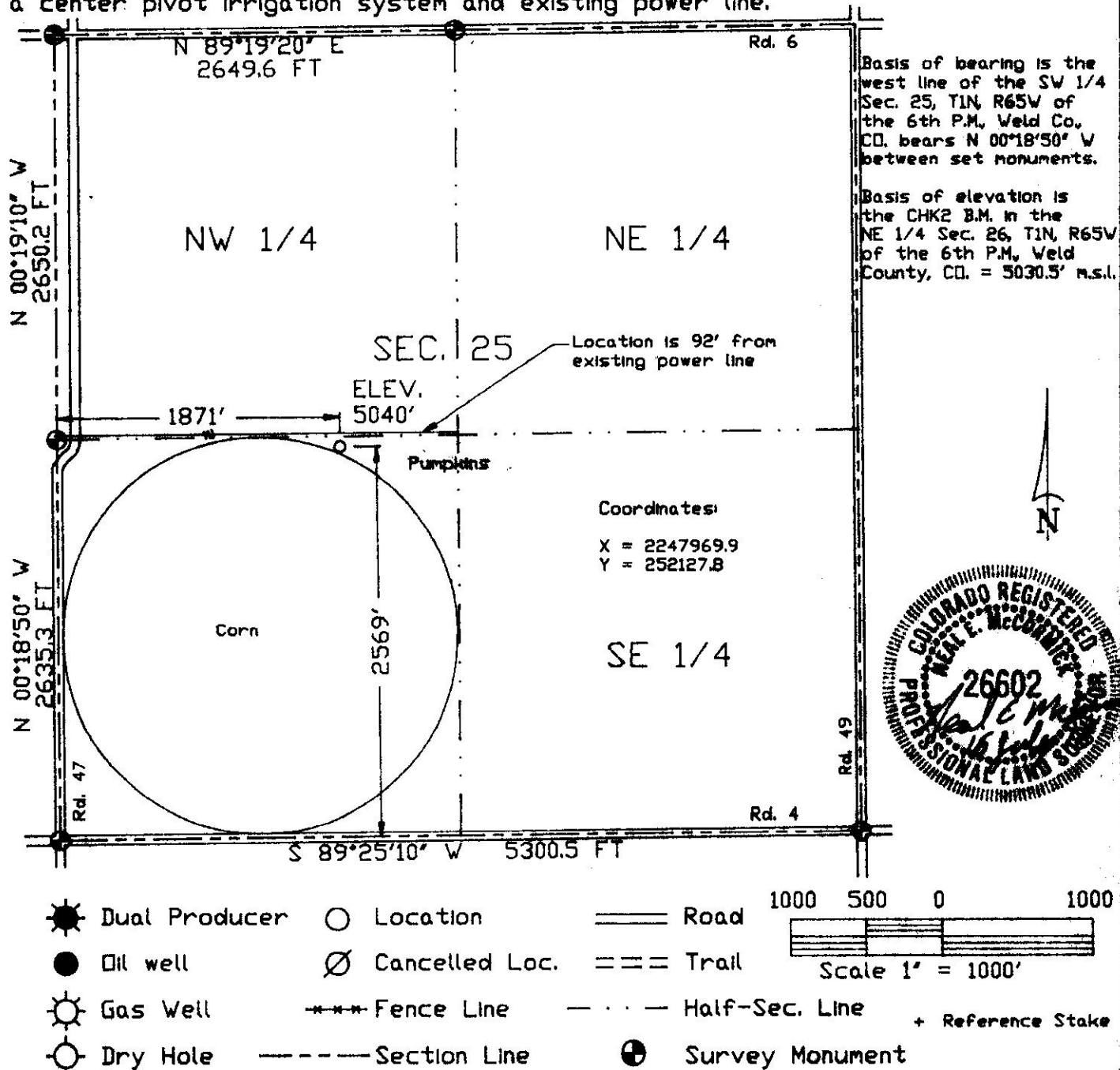


The accompanying plat is an accurate representation showing the location of a proposed well. This location may be described as a point 2569 feet North of the South line, and 1871 feet east of the West line of Section 25, Township 1 North, Range 65 West of the 6th P.M. Weld County, Colorado. The surface elevation at this point is 5040 feet above m.s.l.

Note: This is not a land survey plat.

There are no visible improvements within 200 feet of the location, except a center pivot irrigation system and existing power line.



P.O. Box 296 Phone 970-854-3602
Holyoke, CO 80734 Fax 970-854-2926

HSR AMEN 11-25

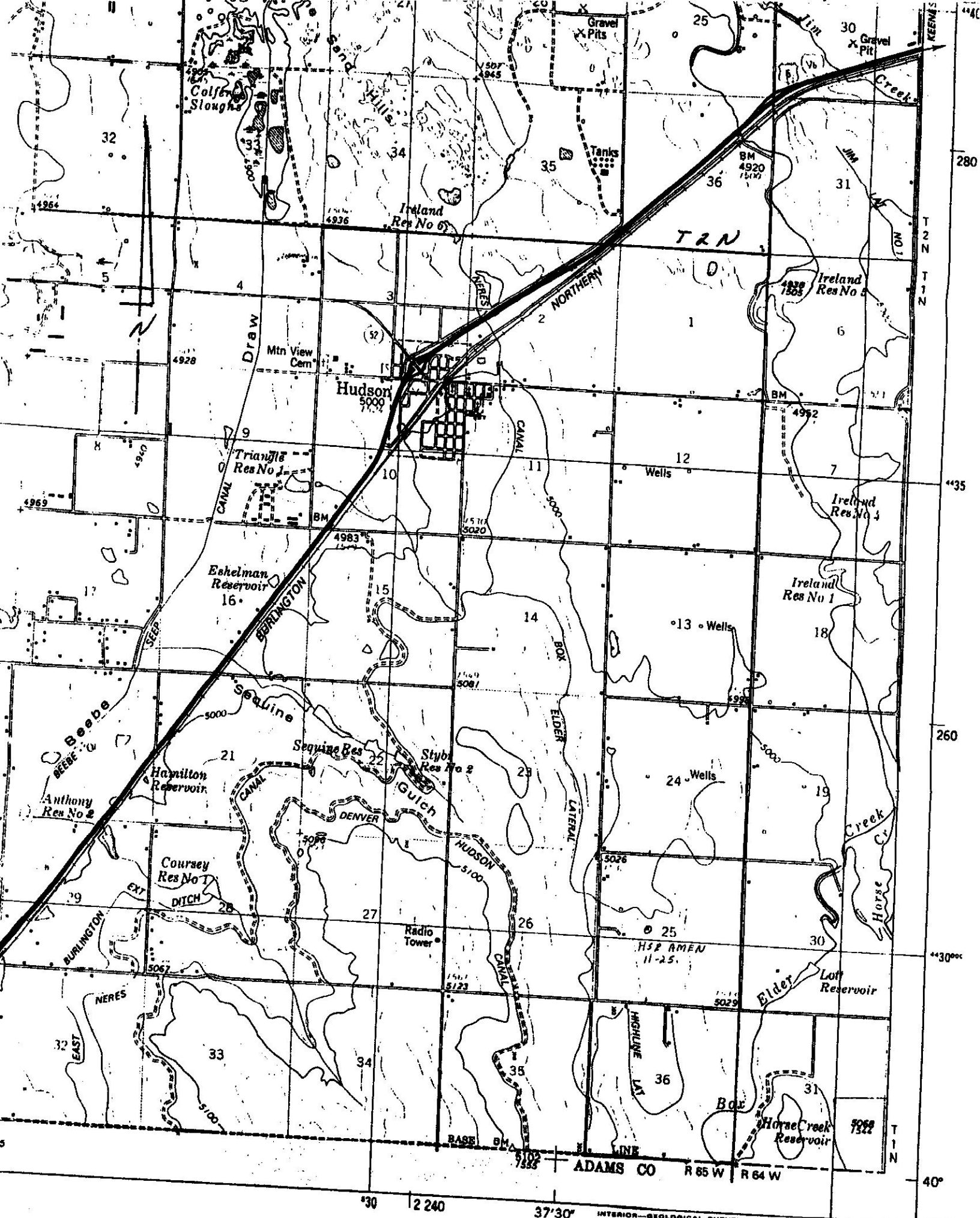
NE 1/4 SW 1/4 SEC. 25, T1N, R65W

HS RESOURCES, INC.

WELD COUNTY, COLORADO



15 JULY 1998



LEGEND