



September 11, 2017

Mr. Matt Lepore, Director  
Colorado Oil and Gas Conservation Commission  
1120 Lincoln Street, Suite 801  
Denver, CO 80203

**RE: COGCC Rule 318A.e.: Proposed Wellbore Spacing Unit**

Donn 5C-20-L

6N-66W Section 19: SE/4NE/4, Section 20: S/2N/2, Section 21: S/2N/2, Section 22: SW/4NW/4  
400.41 Acres

Dear Mr. Lepore,

SRC Energy Inc ("SRC Energy") is planning to drill the above referenced well in accordance with the provisions set out in COGCC Rule 318A.e. SRC Energy's proposed wellbore spacing unit consists of:

Donn 5C-20-L

6N-66W Section 19: SE/4NE/4, Section 20: S/2N/2, Section 21: S/2N/2, Section 22: SW/4NW/4  
400.41 Acres

SRC Energy is not the only owner within the proposed wellbore spacing unit and hereby certifies to the Director that a thirty day (30-day) notice has been given by certified mail to all owners in the proposed wellbore spacing unit, as required by COGCC Rule 318A.e. (6). Copies of the required notification letters are on file at SRC Energy's office. The required thirty (30) day notice period has elapsed absent the receipt by SRC Energy of any objection to their proposal by the owner(s) within the proposed spacing unit for the subject well. We have not received any objections to such well location or proposed spacing unit, therefore, SRC Energy hereby requests the Director approve the well.

Enclosed is the Proposed Spacing Unit Plat to assist in your review and approval of SRC Energy's proposed Application for Permit to Drill (APD) for Donn 5C-20-L well. SRC Energy respectfully requests the COGCC to review the enclosed information and approve the exception location waiver request per Surface Use Agreement and APD for Donn 5C-20-L .

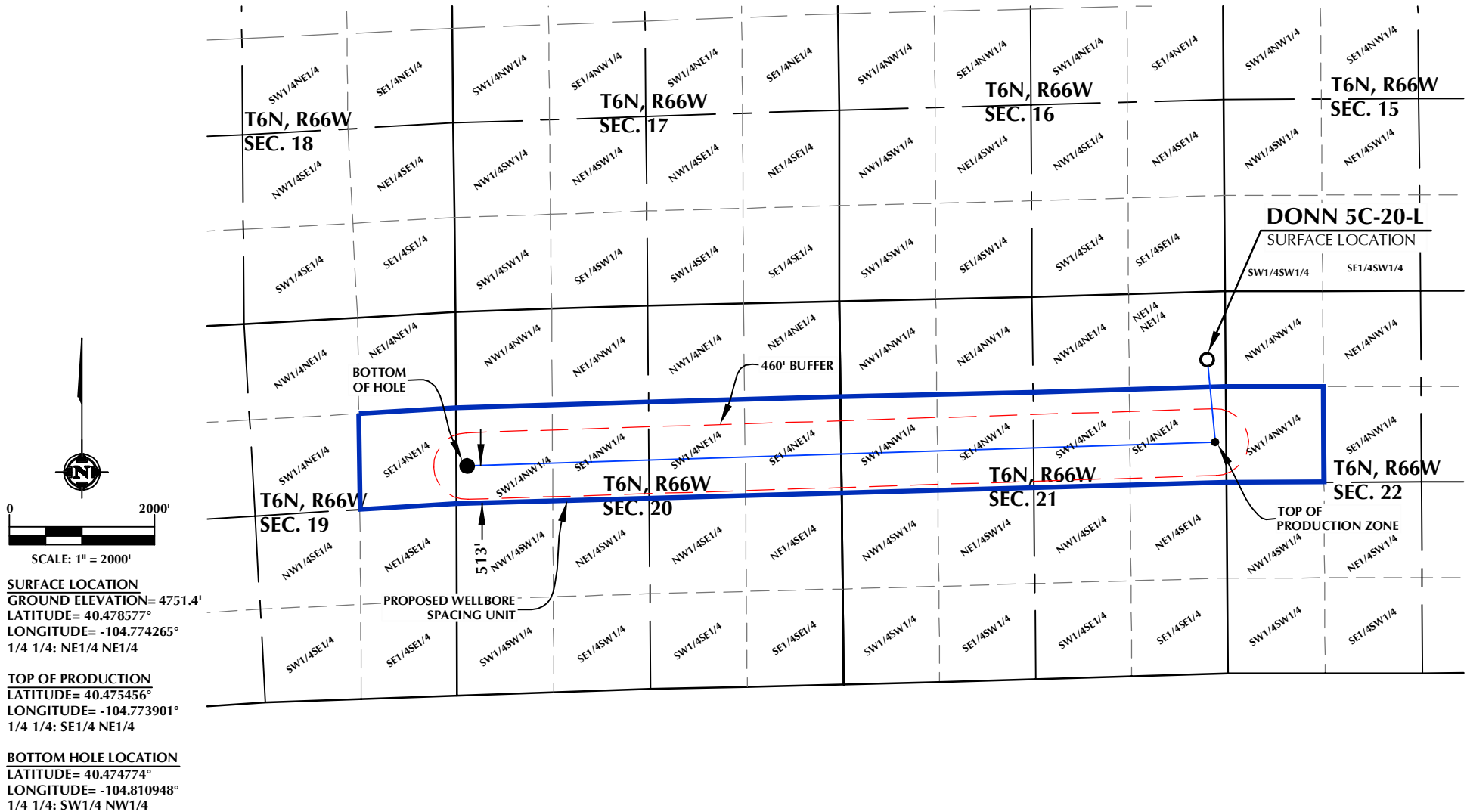
Thank you,  
*Erin Ekblad*

Erin Ekblad  
Manager of Regulatory Affairs  
SRC Energy Inc

Attachment: Proposed Spacing Unit Plat

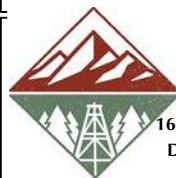
DISTANCE FROM COMPLETED  
PORTION OF WELLBORE TO  
NEAREST UNIT BOUNDARY=513'

# **DONN 5C-20-L WELLBORE SPACING UNIT**



## **WELL PAD - DONN 1-21 PAD**

DONN 5C-20-L  
WELLBORE SPACING UNIT  
938' FNL & 252' FEL NENE (SURFACE)  
2077' FNL & 150' FEL SENE (TOP OF PRODUCTION)  
LOCATED IN SECTION 21  
2129' FNL & 150' FWL SWNW (BOTTOM)  
LOCATED IN SECTION 20  
T6N, R66W, 6TH P.M.  
WELD COUNTY, COLORADO



**SRC ENERGY**  
1675 Broadway, Suite 2600  
Denver, Colorado 80202



## **CONSULTING, LLC**

**SHERIDAN OFFICE**  
1095 Saberton Avenue  
Sheridan, Wyoming 82801  
Phone 307-674-0609

**LOVELAND OFFICE**  
1635 Foxtrail Drive, Suite 204  
Loveland, Colorado 80538  
Phone 970-776-4331

DRAFTED BY:	LMO	CHECKED BY:	JRS
DATE DRAFTED:	6/27/17	DATE SURVEYED:	5/5/17
REVISED:	7/19/17	FILE NAME:	16-120

## **NOTES:**

1. DRAWING LATITUDE AND LONGITUDE COORDINATES ARE NAD 83 (2011)(EPOCH:2010)
2. ELEVATION BASED ON NAVD88 (GEOID12B)
3. BASIS OF BEARING DERIVED FROM COLORADO COORDINATE SYSTEM OF 1983 NORTH ZONE.
4. ALL MEASURED DISTANCES ARE GRID. COMBINED SCALE FACTOR: .99974122 CALCULATED FROM THE SW. CORNER OF SECTION 21, T6N, R66W