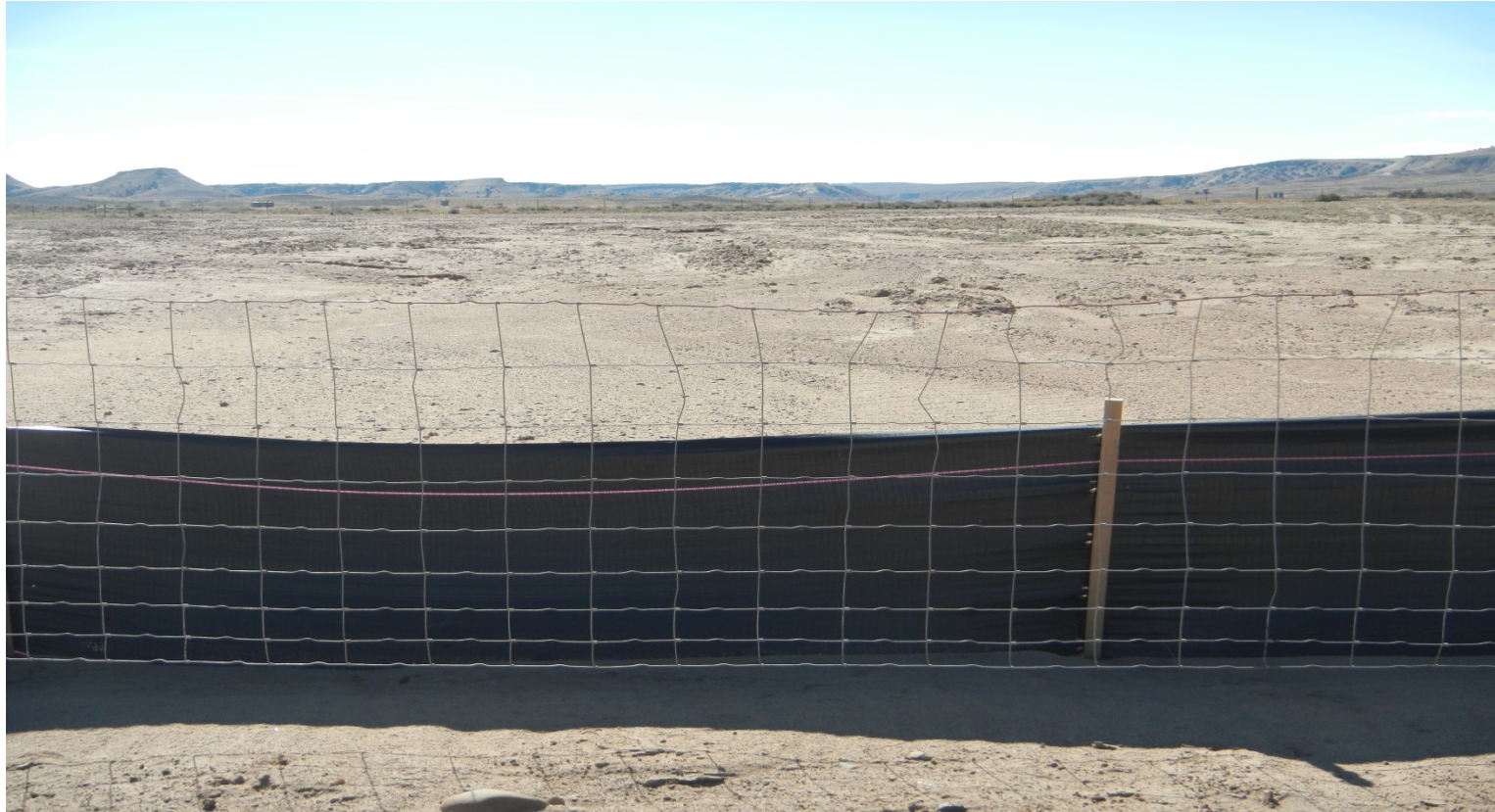


Photo#1:  
Overview of Location from Entry Gate too South West



September 26, 2017



Photo#2:

Most of the SW Run on is coming from the SE flowing through the netting fence, flowing NW.



Photo#3:



September 26, 2017



Photo#4:

Most of the Run on is coming from the SE flowing through the netting fence, flowing NW, eroding Pad surface.



September 26, 2017

Photo#5:



**COLORADO**  
Oil & Gas Conservation  
Commission  
Department of Natural Resources

Inspection Photos: Grynberg PA Chivington API#081-05709



Photo#6:

Most of the Run on is coming from the SE flowing through the netting fence, flowing NW, eroding Pad surface and depositing considerable sediment at North end Silt Fence.



September 26, 2017

Photo#7:



Photo#8:

Silt Fence Label found on Site which notes Installation Specs.



September 26, 2017



**COLORADO**  
Oil & Gas Conservation  
Commission  
Department of Natural Resources

Inspection Photos: Grynberg PA Chivington API#081-05709



Photo#9:  
Photo#10:

Portions of Fence showing poor installation



September 26, 2017



Photo#11:

Portions of Fence showing poor installation.

Photo#12:



September 26, 2017



**Photo#13:**

Reservoir / Pond adjacent (NW) to Site that when overfull may be discharging out along & under Silt Fence and Running onto Location.



September 26, 2017



**COLORADO**  
Oil & Gas Conservation  
Commission  
Department of Natural Resources

Inspection Photos: Grynberg PA Chivington API#081-05709



Photo#14:

Reservoir / Pond adjacent (NW) to Site that when overfull may be discharging out along & under Silt Fence and Running onto Location.



Photo#15:



September 26, 2017