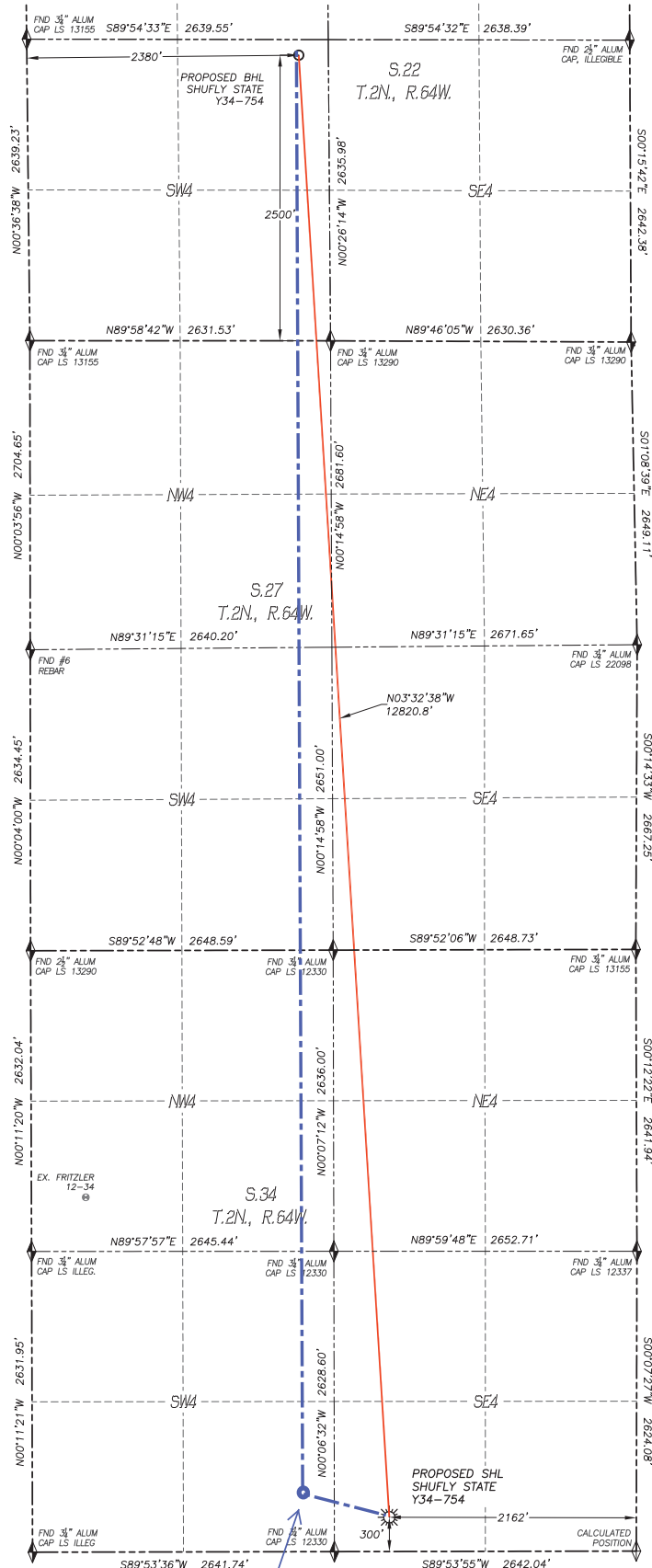


# WELL LOCATION CERTIFICATE

SHUFLY STATE Y34-754

SECTION 34, T.2N., R.64W, 6TH P.M.



IN ACCORDANCE WITH A REQUEST FROM TYLER BEAVERS OF NOBLE ENERGY INC., DALEY LAND SURVEYING, INC. HAS DETERMINED THE SURFACE LOCATION OF THE SHUFLY STATE Y34-754 WELL TO BE 300' FSL, 2162' FEL, AS MEASURED AT NINETY (90) DEGREES FROM THE SECTION LINES OF SECTION 34, TOWNSHIP 2 NORTH, RANGE 64 WEST, AND THE BOTTOM HOLE LOCATION TO BE 2500' FSL, 2380' FWL, AS MEASURED AT NINETY (90) DEGREES FROM THE SECTION LINES OF SECTION 22, TOWNSHIP 2 NORTH, RANGE 64 WEST OF THE 6TH PRINCIPAL MERIDIAN, WELD COUNTY, COLORADO.

I HEREBY STATE THAT THIS WELL LOCATION CERTIFICATE WAS PREPARED BY ME OR UNDER MY DIRECT SUPERVISION, THAT THE WORK WAS COMPLETED ON 1/10/2017 FOR AND ON BEHALF OF NOBLE ENERGY, INC., AND THAT THIS MAP DOES NOT REPRESENT A BOUNDARY SURVEY, IT IS NOT A LAND SURVEY PLAT OR AN IMPROVEMENT SURVEY PLAT AND IT IS NOT TO BE RELIED UPON FOR THE ESTABLISHMENT OF FENCE, BUILDING OR OTHER FUTURE IMPROVEMENT LINES.

## NOTES:

- 1) BEARINGS FOR THIS MAP ARE ASSUMED AND BASED UPON GPS OBSERVATIONS MADE BETWEEN MONUMENTS LOCATED AT THE SOUTHWEST CORNER AND SOUTH QUARTER CORNER OF SECTION 34, T.2N., R.64W.
- 2) HORIZONTAL DATUM IS NAD83.
- 3) VERTICAL DATUM IS NAVD88 AND ORIGINATES FROM THE LOCAL C.O.R.S. NETWORK, UTILIZING THE GEOID12A MODEL.
- 4) SEE LOCATION DRAWING FOR VISIBLE IMPROVEMENTS WITHIN 500' OF PROPOSED DISTURBED AREA.
- 5) SURFACE USE: AGRICULTURAL.
- 6) INST. OPERATOR: TREVOR DALEY.
- 7) NEAREST WELL: FRITZLER 12-34, 3860' NW

## NAD 83 LATITUDE AND LONGITUDE

### SURFACE LOCATION:

LATITUDE: N40.08845°  
LONGITUDE: W104.53554°  
ELEV: 5071'  
PDOP: 0.9  
QTR/QTR: SW4/SE4

### BOTTOM HOLE:

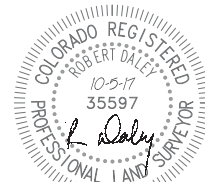
LATITUDE: N40.12357°  
LONGITUDE: W104.53838°  
ELEV: 5071'  
PDOP: 0.9  
QTR/QTR: SW4/SE4

## NEAREST CULTURAL ITEMS:

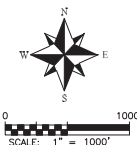
BUILDING: 1148'± NW  
BUILDING UNIT: 1123'± SE  
HIGH OCC. BLD. UNIT: 5280'±  
DES. OUTSIDE ACTIVITY AREA: 5280'±  
PUBLIC ROAD: 309'± S  
ABOVE GROUND UTILITY: 2389'± N  
RAILROAD: 4669'± N  
PROPERTY LINE: 300'± S

## LEGEND

- FOUND MONUMENT AS DESCRIBED
- PROPOSED WELL
- EXISTING WELL
- BOTTOM HOLE
- ABANDONED WELL
- CALCULATED POSITION



FOR AND ON BEHALF OF  
DALEY LAND SURVEYING INC.,  
Robert Daley, PLS 35597



**noble energy**

DALEY LAND  
SURVEYING, INC.  
970.302.4159

Approximate Top of Producing Zone:  
460' FSL, 2385' FWL, Sec 34, T2N- R64W.  
**HAND DRAWN**  
Depiction was not surveyed and was added by NBL