



Lat40°, Inc. 6250 W. 10th Street, Unit 2, Greeley, CO 970-515-5294

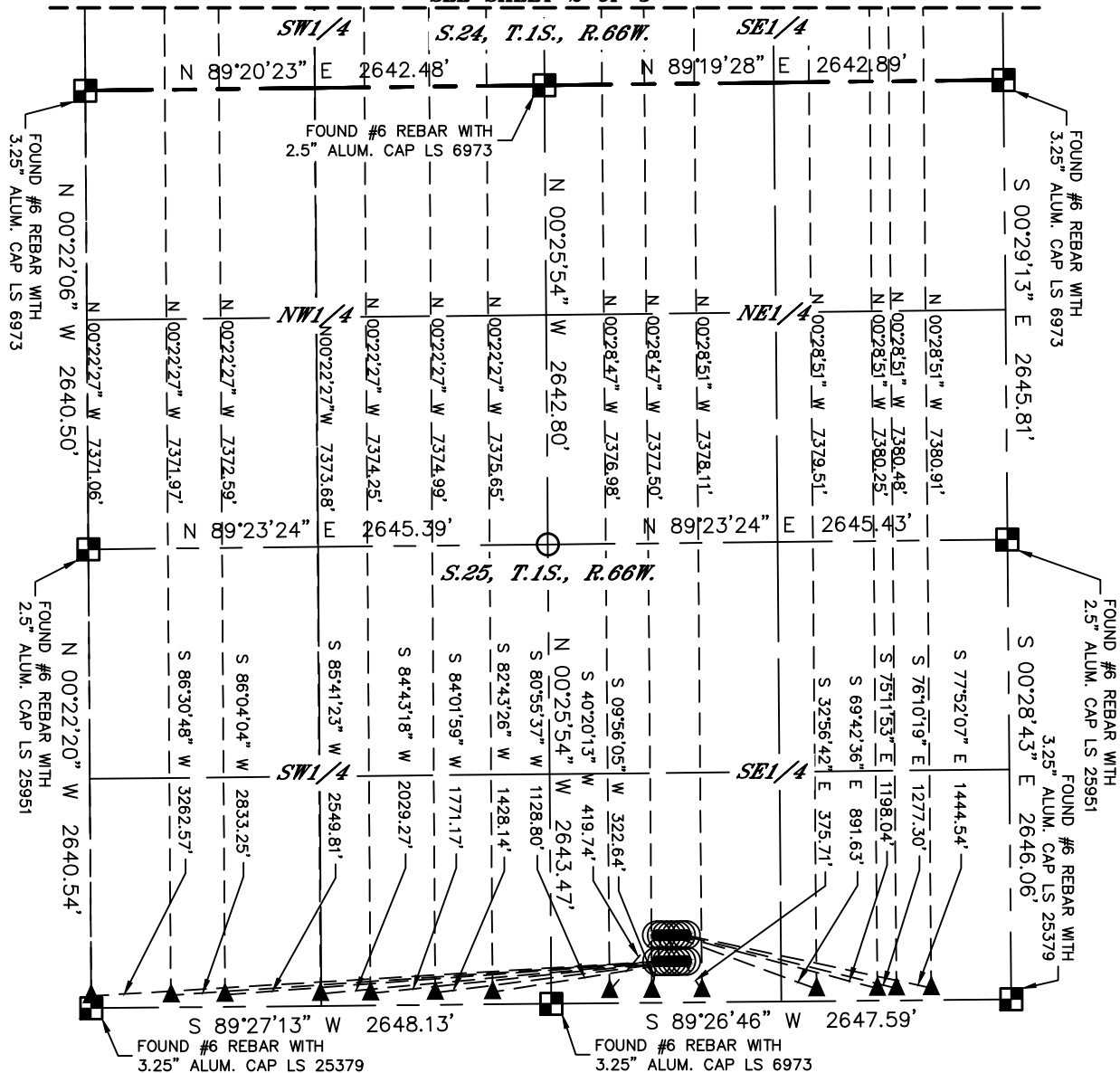
MULTI-WELL PLAN

ALMA 1S-66-2524 PAD

SECTION: 25
TOWNSHIP: 1S
RANGE: 66W
6TH. P.M.
ADAMS COUNTY, CO

THIS MAP DOES NOT REPRESENT A BOUNDARY SURVEY

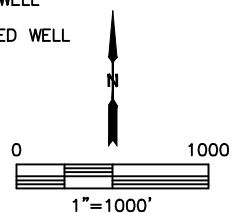
SEE SHEET 2 OF 3



#	WELL NAME	BHL FOOTAGE			BHL LAT °	BHL LONG °	BHL S-T-R
1	ALMA 1S-66-2524-3NH	460	FEL	2160	FSL	39.94930	-104.71621 24-1S-66
2	ALMA 1S-66-2524-4CDH	660	FEL	2160	FSL	39.94930	-104.71693 24-1S-66
3	ALMA 1S-66-2524-5NH	770	FEL	2160	FSL	39.94930	-104.71732 24-1S-66
4	ALMA 1S-66-2524-6NH	1120	FEL	2160	FSL	39.94929	-104.71857 24-1S-66
5	ALMA 1S-66-2524-7NH	1780	FEL	2160	FSL	39.94929	-104.72092 24-1S-66
6	ALMA 1S-66-2524-8CDH	2068	FEL	2160	FSL	39.94929	-104.72195 24-1S-66
7	ALMA 1S-66-2524-9NH	2312	FEL	2160	FSL	39.94928	-104.72282 24-1S-66
8	ALMA 1S-66-2524-11NH	2310	FWL	2160	FSL	39.94928	-104.72517 24-1S-66
9	ALMA 1S-66-2524-12NH	1980	FWL	2160	FSL	39.94928	-104.72635 24-1S-66
10	ALMA 1S-66-2524-14CDH	1607	FWL	2160	FSL	39.94927	-104.72768 24-1S-66
11	ALMA 1S-66-2524-15NH	1320	FWL	2160	FSL	39.94927	-104.72870 24-1S-66
12	ALMA 1S-66-2524-17NH	770	FWL	2160	FSL	39.94927	-104.73066 24-1S-66
13	ALMA 1S-66-2524-19NH	458	FWL	2160	FSL	39.94926	-104.73178 24-1S-66
14	ALMA 1S-66-2524-20CDH	0	FWL	2160	FSL	39.94926	-104.73341 24-1S-66

LEGEND

- = ALIQUOT MONUMENT AS DESCRIBED
- = CALCULATED POSITION
- = SURFACE HOLE LOCATION (SHL)
- ▲ = ENTRY POINT LOCATION (EP)
- _{BH} = BOTTOM HOLE LOCATION (BHL)
- ⊙ = EXISTING WELL
- ⊙ = ABANDONED WELL



SHEET 1 OF 3

DATE: 8/25/2017
PROJECT#: 2017086

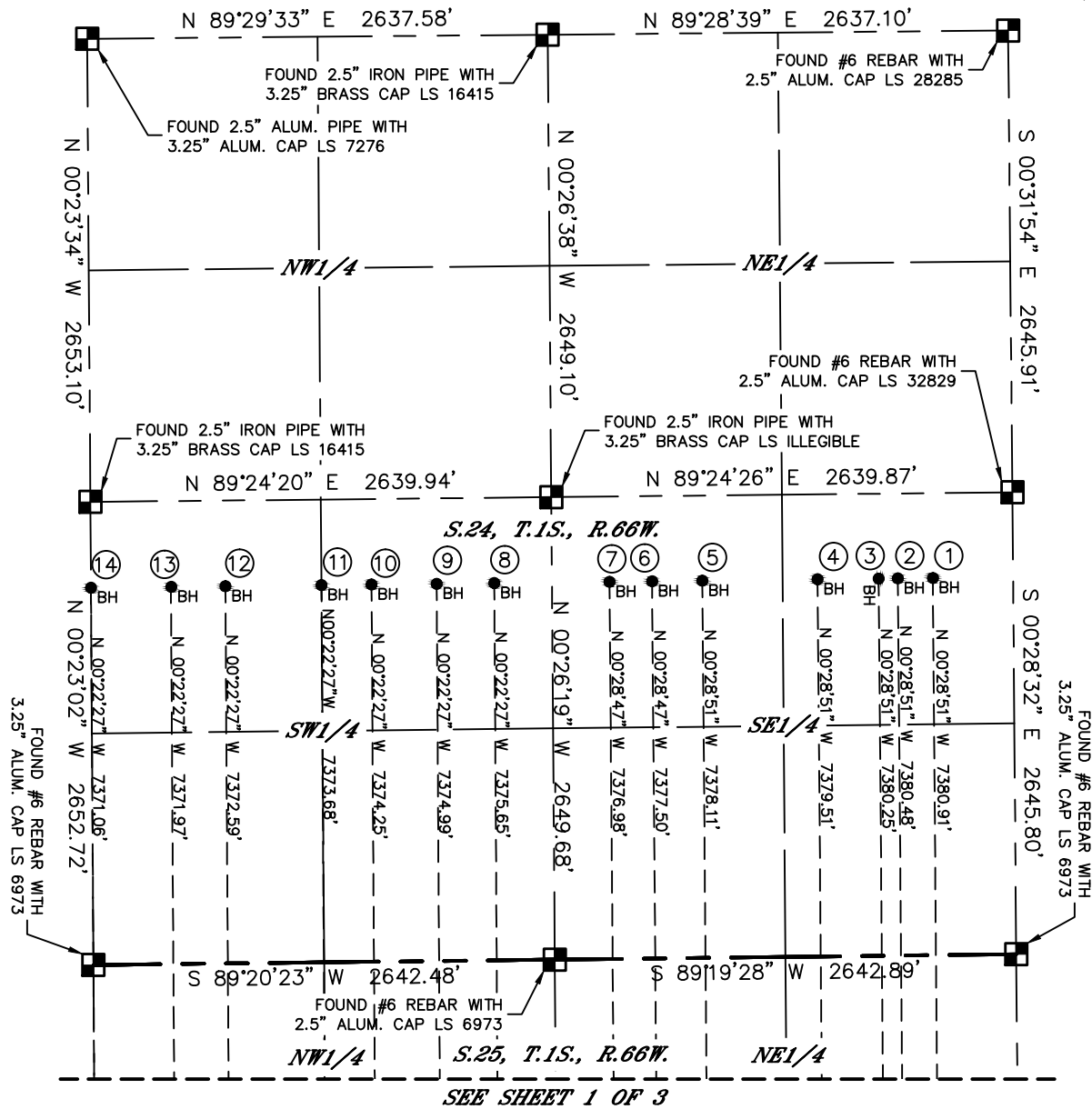


Lat40°, Inc. 6250 W. 10th Street, Unit 2, Greeley, CO 970-515-5294

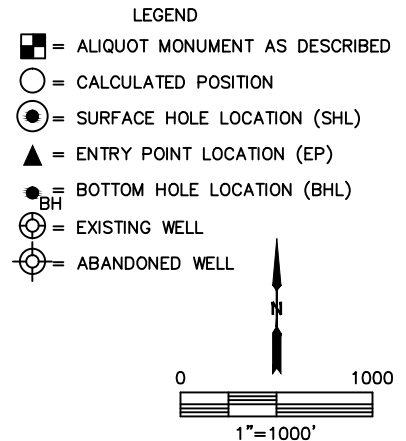
MULTI-WELL PLAN

ALMA 1S-66-2524 PAD

SECTION: 25
TOWNSHIP: 1S
RANGE: 66W
6TH. P.M.
ADAMS COUNTY, CO



#	WELL NAME	BHL FOOTAGE	BHL LAT °	BHL LONG °	BHL S-T-R
1	ALMA 1S-66-2524-3NH	460 FEL 2160 FSL	39.94930	-104.71621	24-1S-66
2	ALMA 1S-66-2524-4CDH	660 FEL 2160 FSL	39.94930	-104.71693	24-1S-66
3	ALMA 1S-66-2524-5NH	770 FEL 2160 FSL	39.94930	-104.71732	24-1S-66
4	ALMA 1S-66-2524-6NH	1120 FEL 2160 FSL	39.94929	-104.71857	24-1S-66
5	ALMA 1S-66-2524-7NH	1780 FEL 2160 FSL	39.94929	-104.72092	24-1S-66
6	ALMA 1S-66-2524-8CDH	2068 FEL 2160 FSL	39.94929	-104.72195	24-1S-66
7	ALMA 1S-66-2524-9NH	2312 FEL 2160 FSL	39.94928	-104.72282	24-1S-66
8	ALMA 1S-66-2524-11NH	2310 FWL 2160 FSL	39.94928	-104.72517	24-1S-66
9	ALMA 1S-66-2524-12NH	1980 FWL 2160 FSL	39.94928	-104.72635	24-1S-66
10	ALMA 1S-66-2524-14CDH	1607 FWL 2160 FSL	39.94927	-104.72768	24-1S-66
11	ALMA 1S-66-2524-15NH	1320 FWL 2160 FSL	39.94927	-104.72870	24-1S-66
12	ALMA 1S-66-2524-17NH	770 FWL 2160 FSL	39.94927	-104.73066	24-1S-66
13	ALMA 1S-66-2524-19NH	458 FWL 2160 FSL	39.94926	-104.73178	24-1S-66
14	ALMA 1S-66-2524-20CDH	0 FWL 2160 FSL	39.94926	-104.73341	24-1S-66





Lat40°, Inc. 6250 W. 10th Street, Unit 2, Greeley, CO 970-515-5294

MULTI-WELL PLAN

ALMA 1S-66-2524 PAD

SECTION: 25
TOWNSHIP: 1S
RANGE: 66W
6TH. P.M.
ADAMS COUNTY, CO

