



---

January 30, 2017

Mr. Matthew Lepore, Director  
Colorado Oil & Gas Conservation Commission  
1120 Lincoln Street, Ste. 801  
Denver, Colorado 80203

RE: Rule 318.A.e.  
AD-J Evans 3-20-24  
AD-J Evans C3-20-24  
AD-J Evans 4-20-24  
AD-J Evans 5-20-24  
AD-J Evans C4-20-24

Surface Location: NWSW, Section 21, Township 5N, Range 65W, Weld County, Colorado

Dear Mr. Lepore,

Extraction Oil and Gas is planning to drill the captioned horizontal wells in accordance with the provision of COGCC Rule 318A.e.

The proposed wellbore spacing unit consists of:

Section 24-5N-66W: NE/4  
Section 19-5N-65W: N/2  
Section 20-5N-65W: N/2

The spacing unit is an 800-acre wellbore spacing unit for the Niobrara and Codell formations.

Extraction Oil and Gas hereby certifies to the Director that all Owners within the proposed spacing unit above were notified and 30 days have passed. Extraction received an objection from PDC Energy Inc. on 7/26/16, but the objection was withdrawn on 1/30/17.

If you have any questions or issues regarding this permit, please contact Alyssa Andrews at (720) 481-2379.

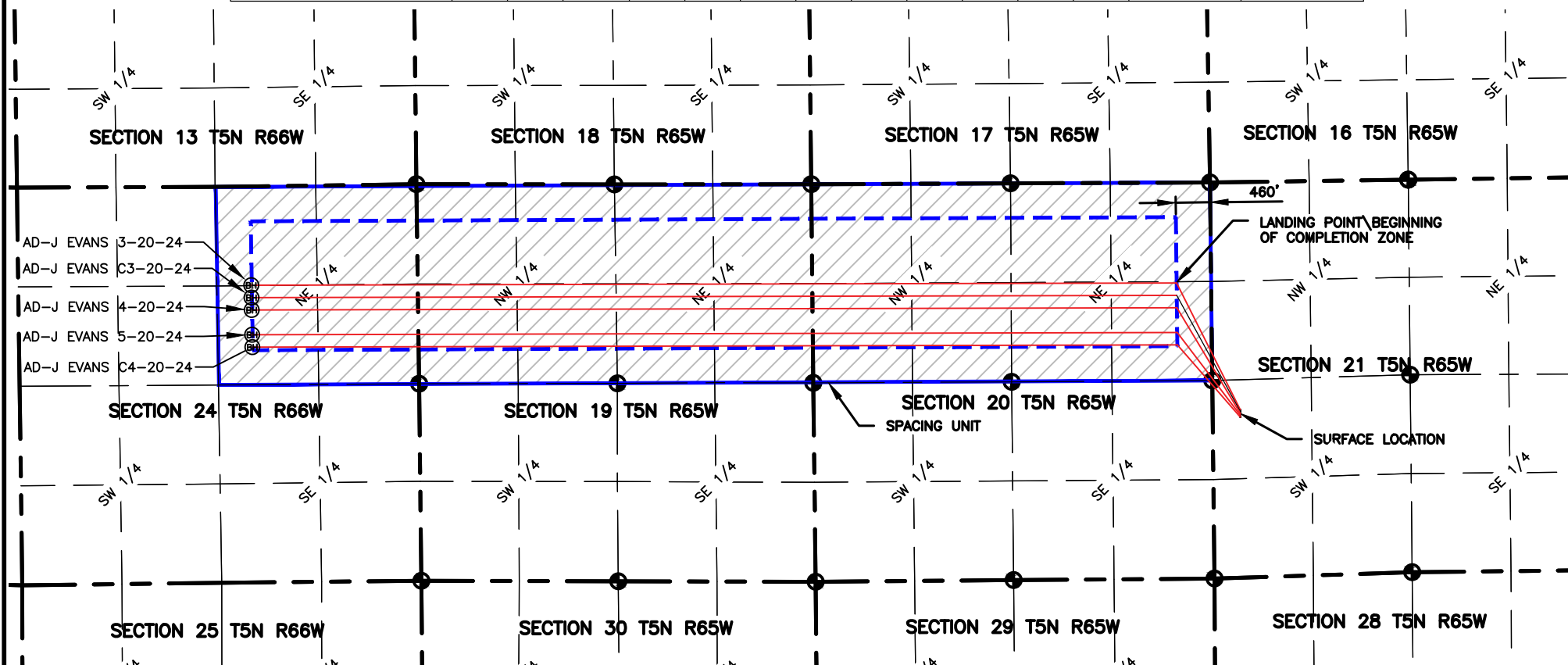
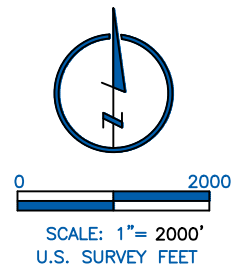
Sincerely,

Alyssa Andrews  
Regulatory Analyst  
Extraction Oil & Gas, LLC

NAME: J EVANS

SPACING UNIT: NE/4 SEC 24 T5N R66W, N/2 SEC 19, N/2 SEC 20 T5N R65W UNIT ACREAGE: 800

| WELL NAME           | SURFACE LOCATION |      |       |      | LANDING POINT\BEGIN HORIZONTAL COMPLETION ZONE |      |       |      | BOTTOM HOLE\END HORIZONTAL COMPLETION ZONE |      |       |      | COMPLETION ZONE BEARING | COMPLETION ZONE LENGTH |
|---------------------|------------------|------|-------|------|--|------|-------|------|--|------|-------|------|-------------------------|------------------------|
|                     | DIST.            | DIR. | DIST. | DIR. | DIST.  | DIR. | DIST. | DIR. | DIST.                                      | DIR. | DIST. | DIR. |                         |                        |
| AD-J EVANS 3-20-24  | 2236'            | FSL  | 371'  | FWL  | 1337'  | FNL  | 460'  | FEL  | 1316'                                      | FNL  | 2220' | FEL  | S89°51'39"W             | 12337.83'              |
| AD-J EVANS C3-20-24 | 2212'            | FSL  | 371'  | FWL  | 1502'  | FNL  | 460'  | FEL  | 1482'                                      | FNL  | 2219' | FEL  | S89°51'39"W             | 12336.96'              |
| AD-J EVANS 4-20-24  | 2188'            | FSL  | 371'  | FWL  | 1667'  | FNL  | 460'  | FEL  | 1647'                                      | FNL  | 2218' | FEL  | S89°51'39"W             | 12336.09'              |
| AD-J EVANS 5-20-24  | 2164'            | FSL  | 370'  | FWL  | 1997'  | FNL  | 460'  | FEL  | 1977'                                      | FNL  | 2217' | FEL  | S89°51'39"W             | 12334.36'              |
| AD-J EVANS C4-20-24 | 2140'            | FSL  | 370'  | FWL  | 2162'  | FNL  | 460'  | FEL  | 2142'                                      | FNL  | 2217' | FEL  | S89°51'39"W             | 12333.49'              |



4715 Innovation Drive 970.226.0342 | P  
Fort Collins, CO 80525 970.226.0879 | F  
[www.LRA-Inc.com](http://www.LRA-Inc.com)

PROPOSED SPACING UNIT EXHIBIT  
ARDREY 21-I  
J EVANS

## LEGEND

- ⊕ ALIQUOT CORNER
- ⊕ BOTTOM HOLE
- △ COMPUTED ALIQUOT CORNER FROM MONUMENT ACCESSORIES
- COMPUTED FROM GLO RECORDS
- SECTION LINE
- SIXTEENTH LINE
- QUARTER SECTION LINE

DRAWN BY  
JMC

DATE  
01/17/17

COGCC ID

PROJECT - TASK NUMBER  
0216012

BOOK AND PAGE  
MRI 04 20-25

SURFACE - LOCATION  
NW/4 SW/4 SEC 21 T5N R65W

PATH\FILENAME P:\\_Engineering\0216012 Ardrey 21-I\DRAWINGS\EXHIBITS\0216012-PSU-JEVANS.dwg